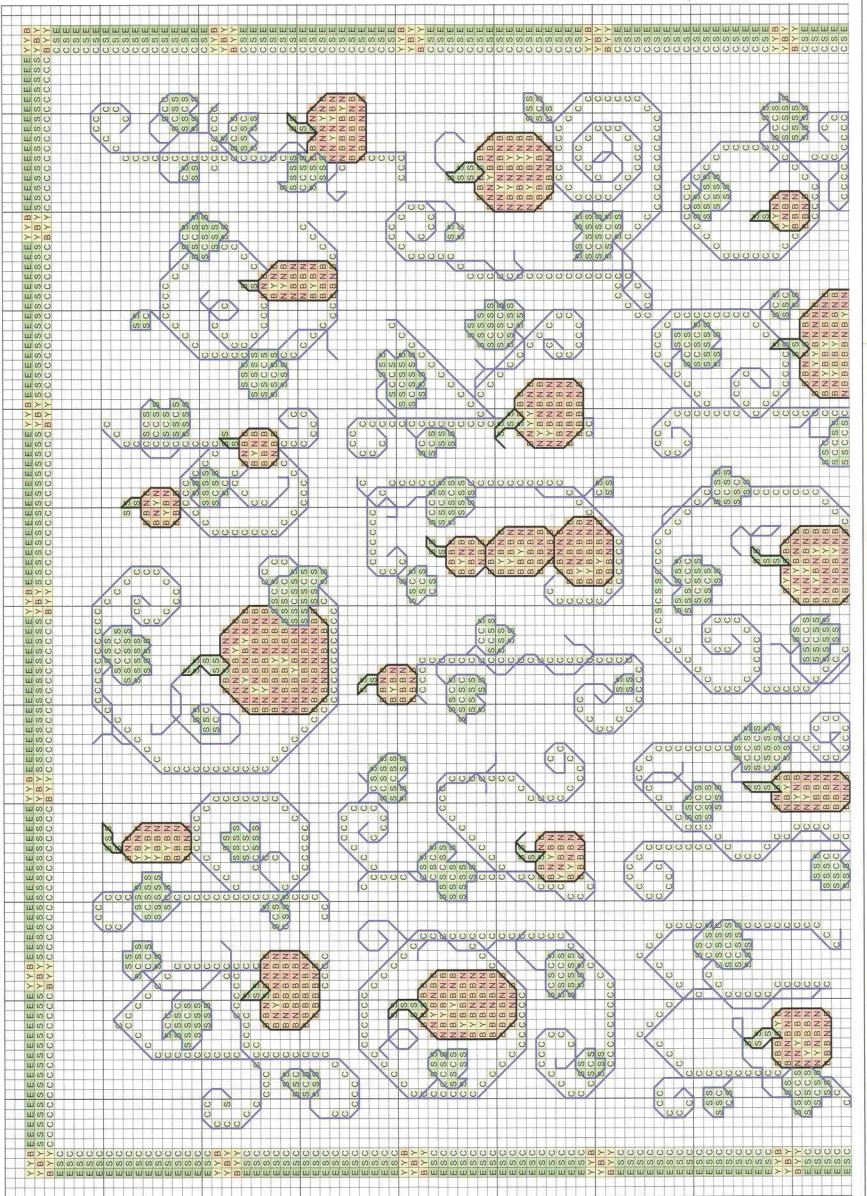
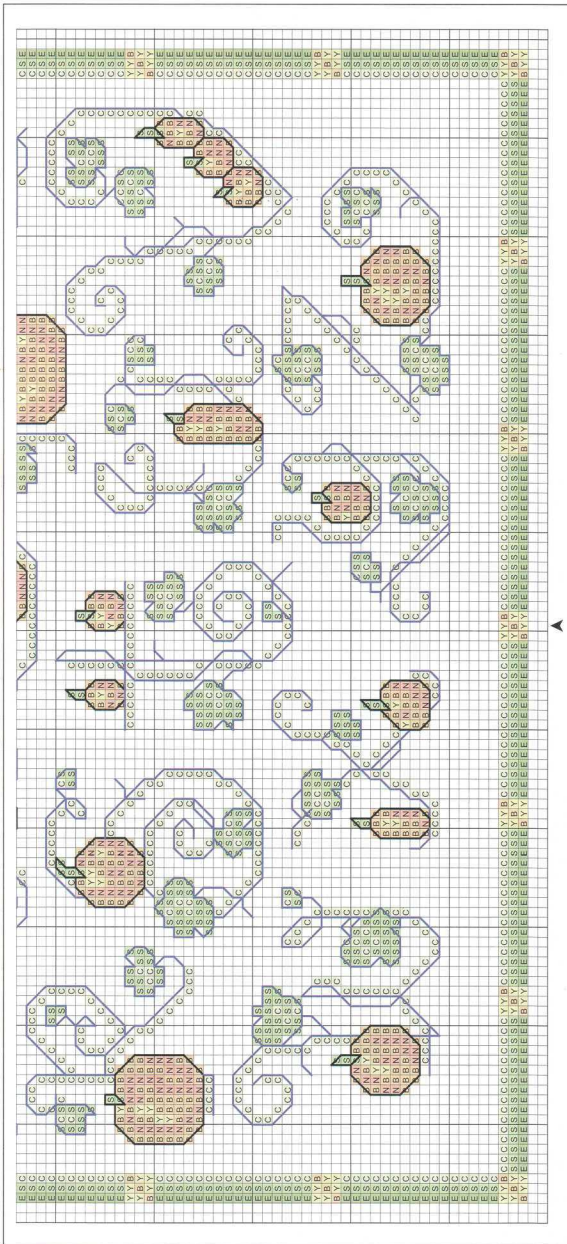


TOP



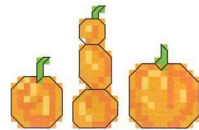


#### CROSS-STITCH

ANCHOR	DMC	COLOR
923	699	Christmas Green
226	702	Kelly Green
256	704	Bright Chartreuse
316	740	Tangerine
303	742	Light Tangerine
332	946	Medium Burnt Orange

#### BACKSTITCH

ANCHOR	DMC	COLOR
403	310	Black
923	699	Christmas Green



#### ProjectTip

##### Monogram It!

The letters in this alphabet sampler are perfect for adding a beautiful, autumn-themed monogram to almost anything. Stitch an initial onto each corner of a set of linen napkins for a personalized housewarming or wedding gift. A place card with each person's monogram is a stylish way to set the table for Thanksgiving. Stitch your initial onto perforated paper to create a lovely pin to wear all season; just follow the finishing instructions on page 27. The possibilities are endless!