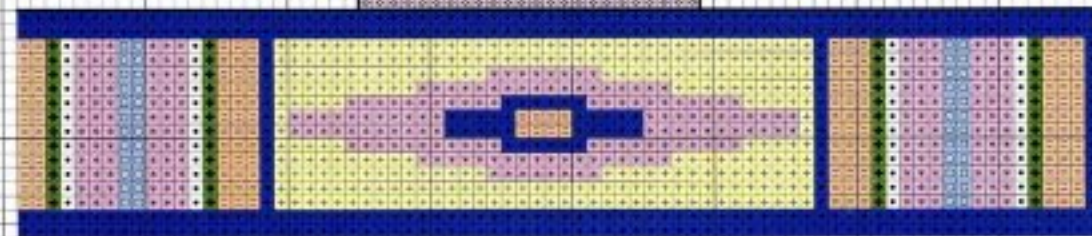




**CACTUS ROW (364w x 126h)**

X	DMC	B'ST	ANC.	COLOR	X	DMC	ANC.	COLOR	X	DMC	1/4X	ANC.	COLOR	X	DMC	ANC.	COLOR
□	blanc		2	white	■	437	362	tan	■	778		968	mauve	■	3051	681	dk green
■	224		893	rose	■	451	233	grey	■	783		306	dk gold	■	3325	129	blue
■	310	☑	403	black	■	524	858	grey green	■	792		941	dk blue	■	3363	262	green
■	333		119	purple	■	580	281	olive	■	977	■	1002	copper	■	3364	260	lt olive
■	340		118	lt purple	■	676	891	gold	■	3047		852	lt gold				





**Castus Row (364w x 126h)**  
 14 count 26" x 9"  
 16 count 22 1/4" x 7 1/8"  
 18 count 20 1/8" x 7"

**CACTUS ROW (364w x 126h)**

X	DMC	B*ST	ANC.	COLOR	X	DMC	ANC.	COLOR	X	DMC	1/4X	ANC.	COLOR	X	DMC	ANC.	COLOR
□	blanc		2	white	■	437	362	tan	■	778		968	mauve	■	3051	681	dk green
■	224		893	rose	■	451	233	grey	■	783		306	dk gold	■	3325	129	blue
■	310	☑	403	black	■	524	858	grey green	■	792		941	dk blue	■	3363	262	green
■	333		119	purple	■	580	281	olive	■	977	■	1002	copper	■	3364	260	lt olive
■	340		118	lt purple	■	676	891	gold	■	3047		852	lt gold				

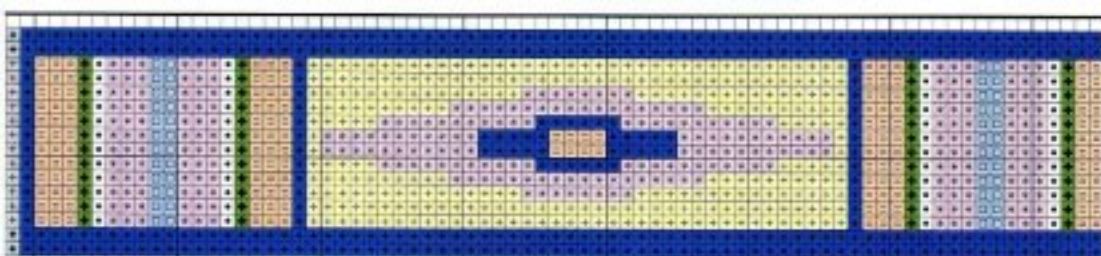




**Cactus Row** - stitched on a 32" x 15" piece of 14 count Ivory Aida (design size 26" x 9") using 2 strands of floss for Cross Stitch and 1 strand for Backstitch. It was custom framed.

Grey area indicates last row of previous section of design.





Grey area indicates last row of previous section of design.