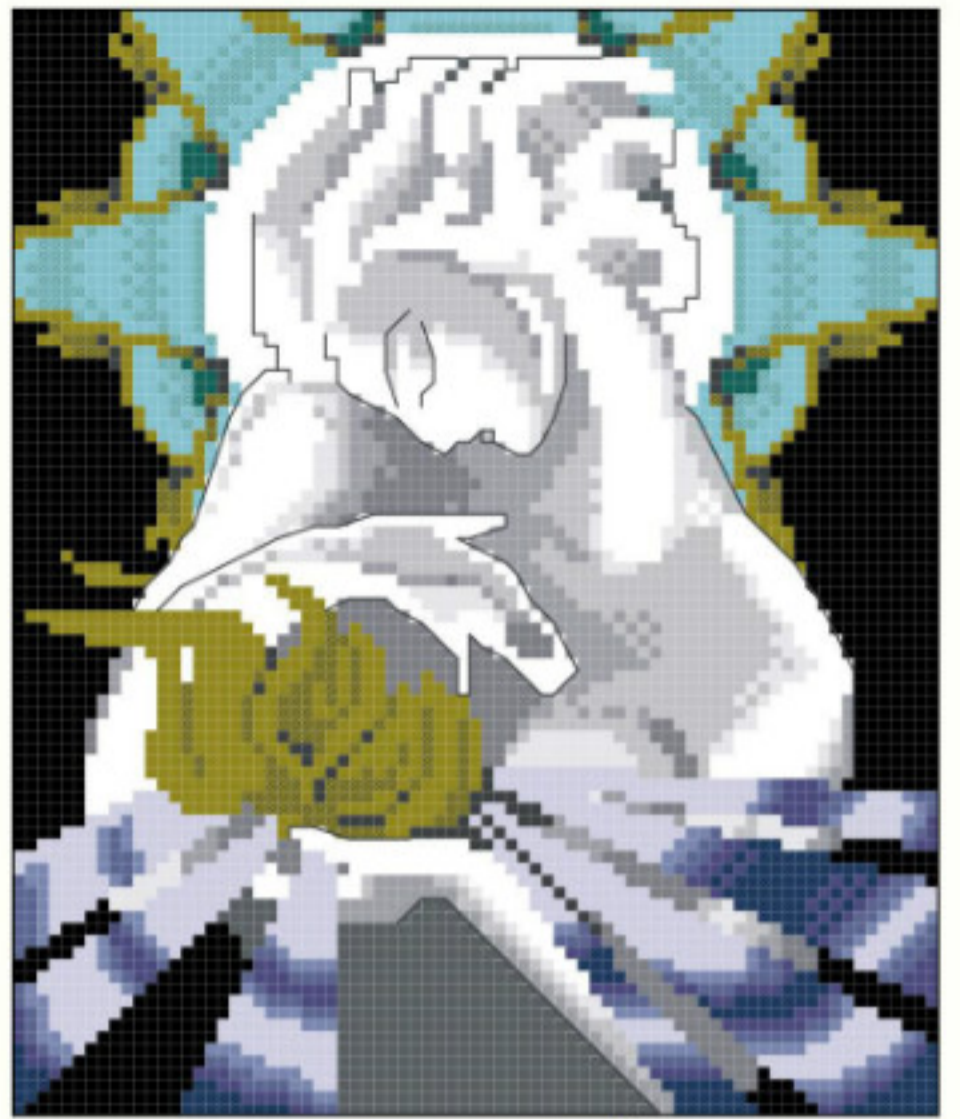
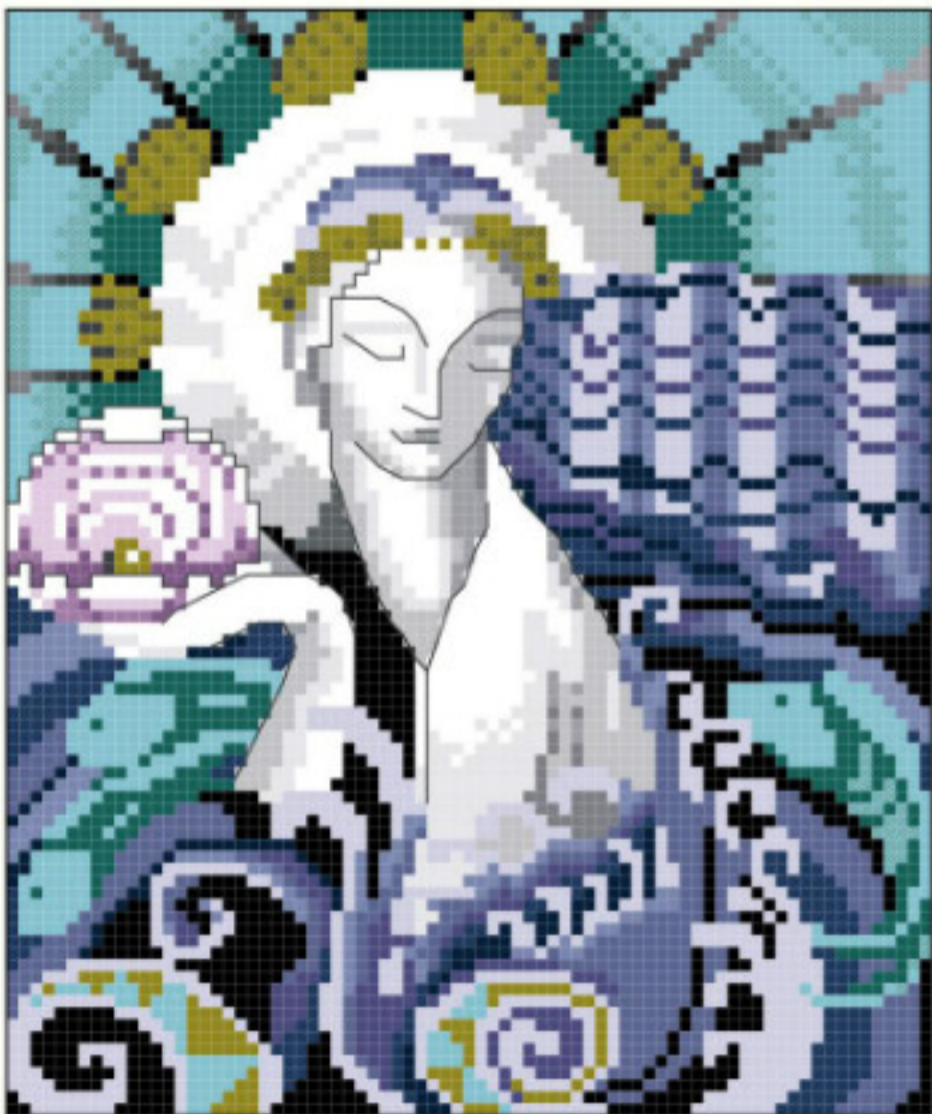




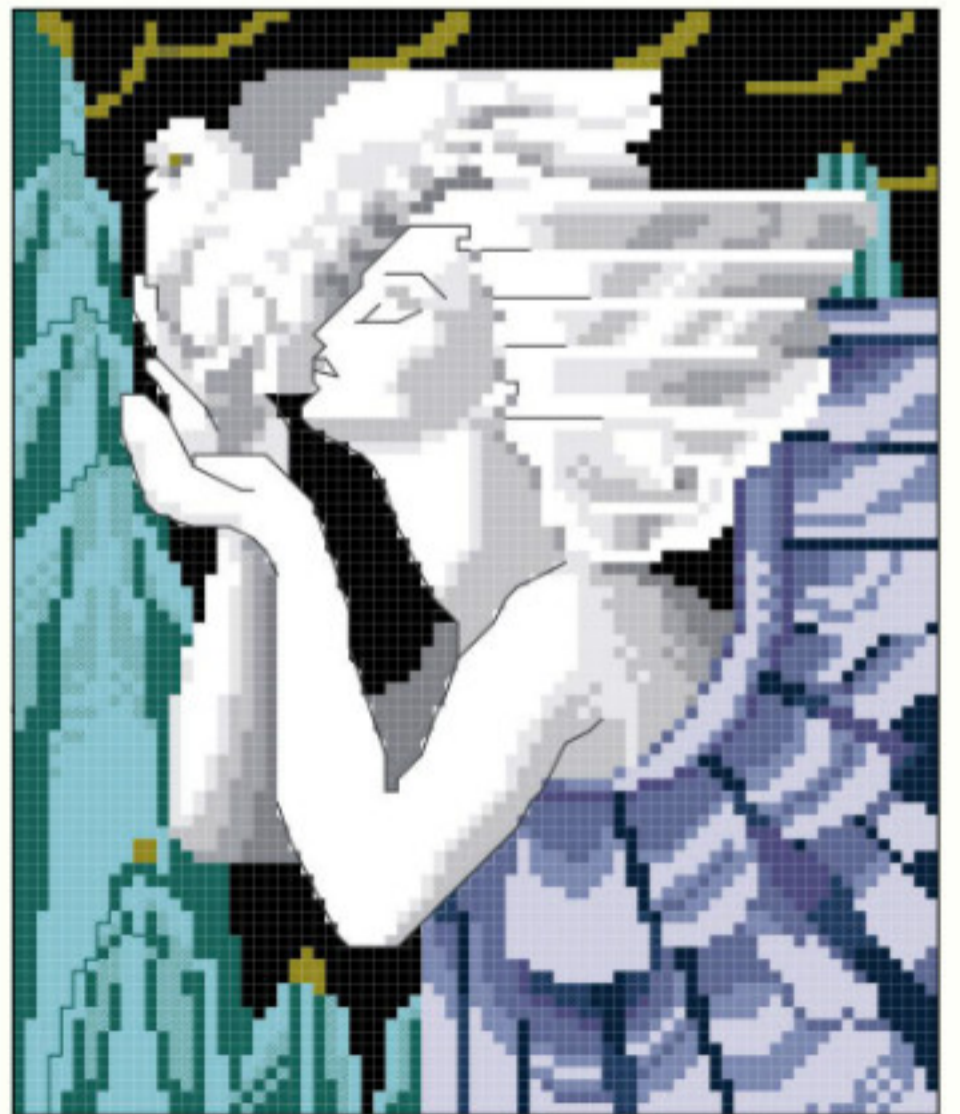
E R R T H



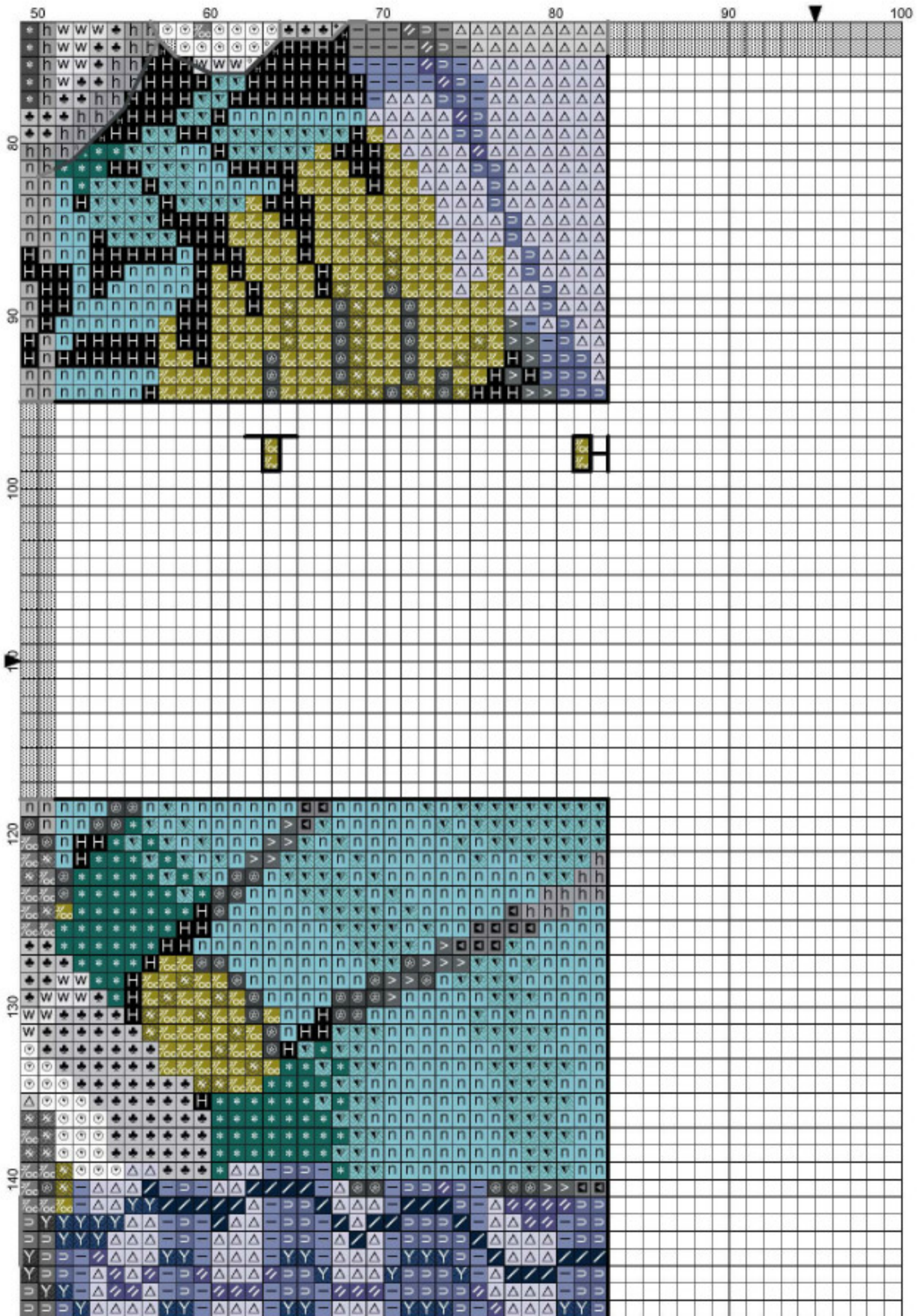
F I R E

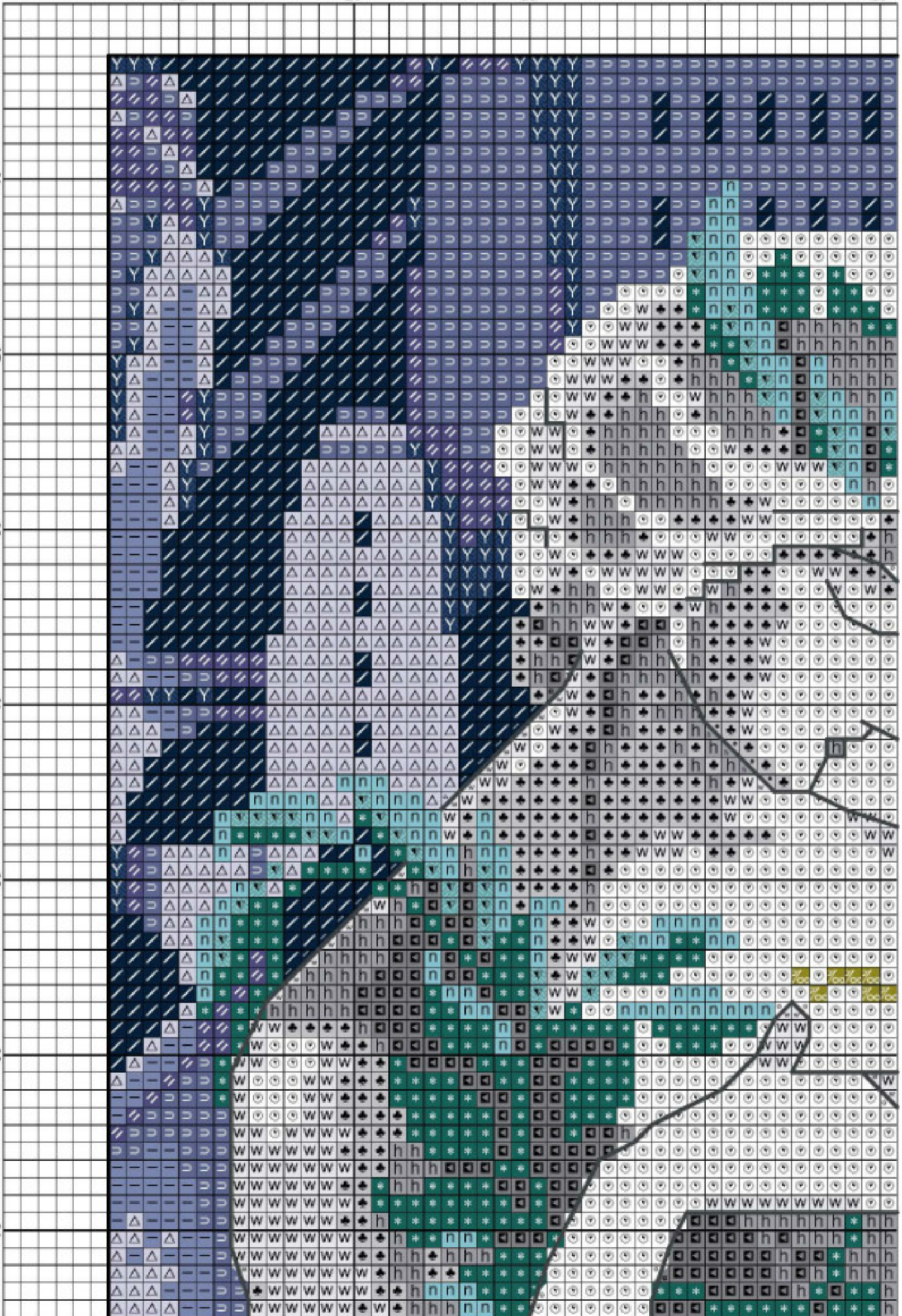


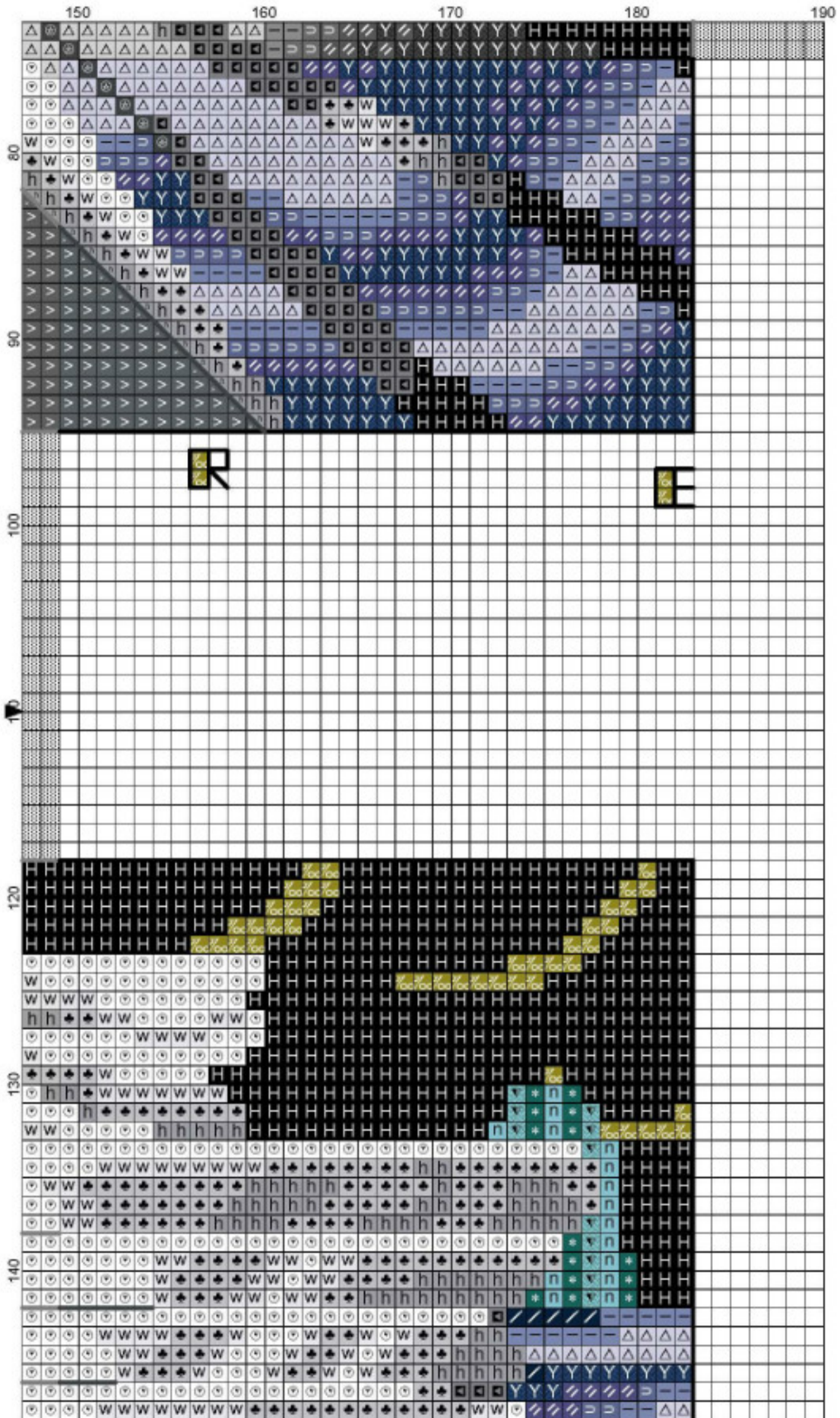
W R T E R

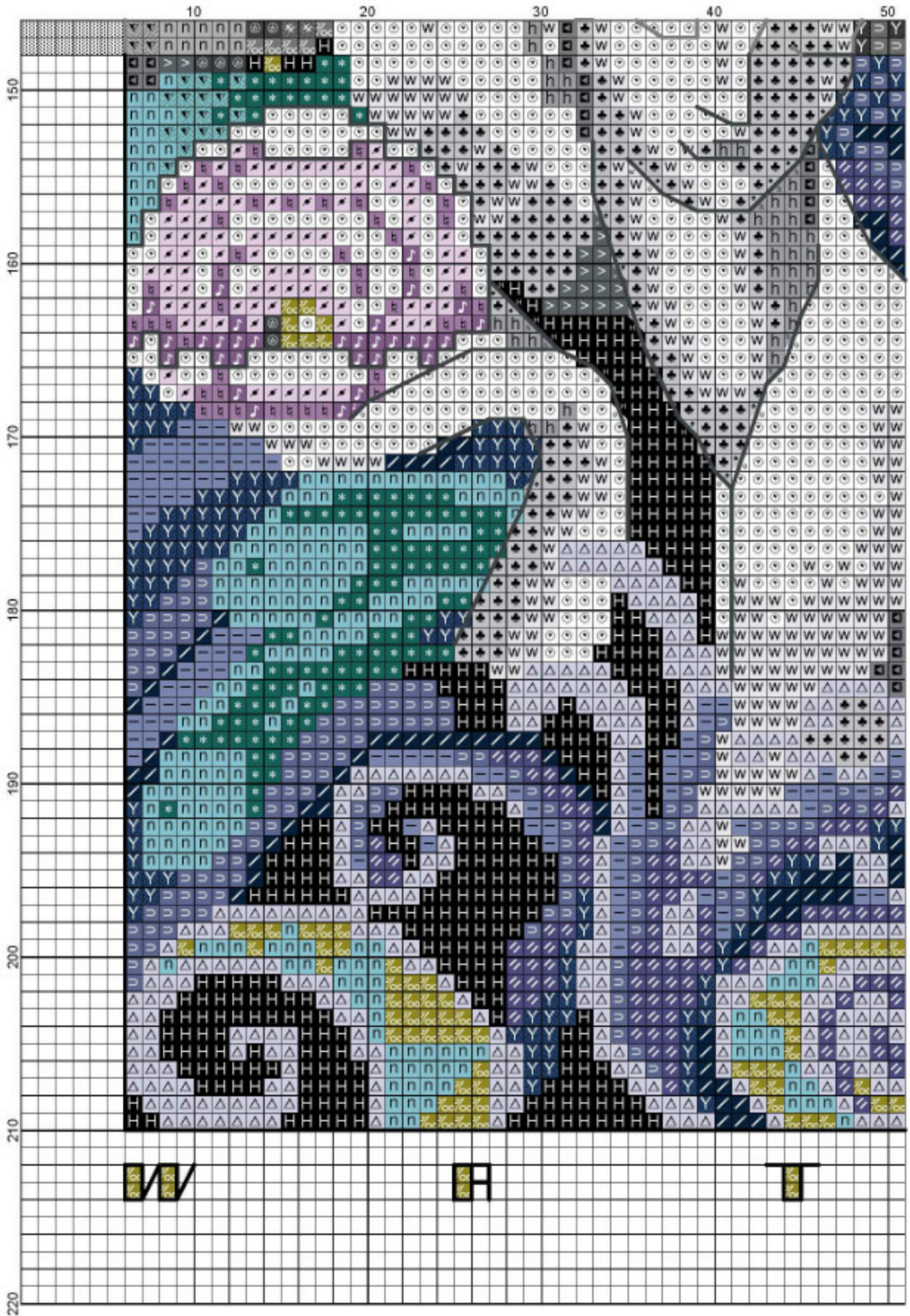


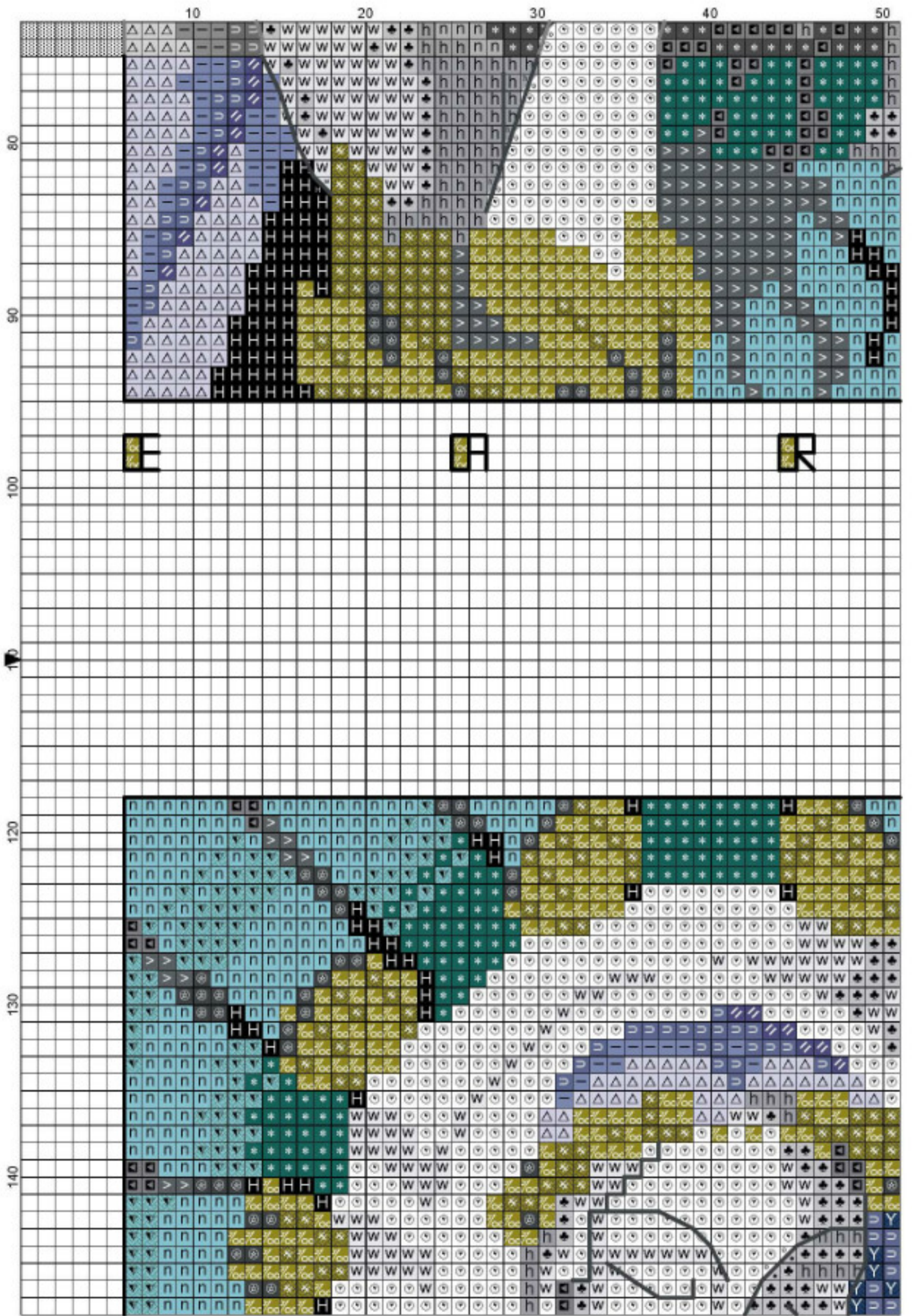
R I R R

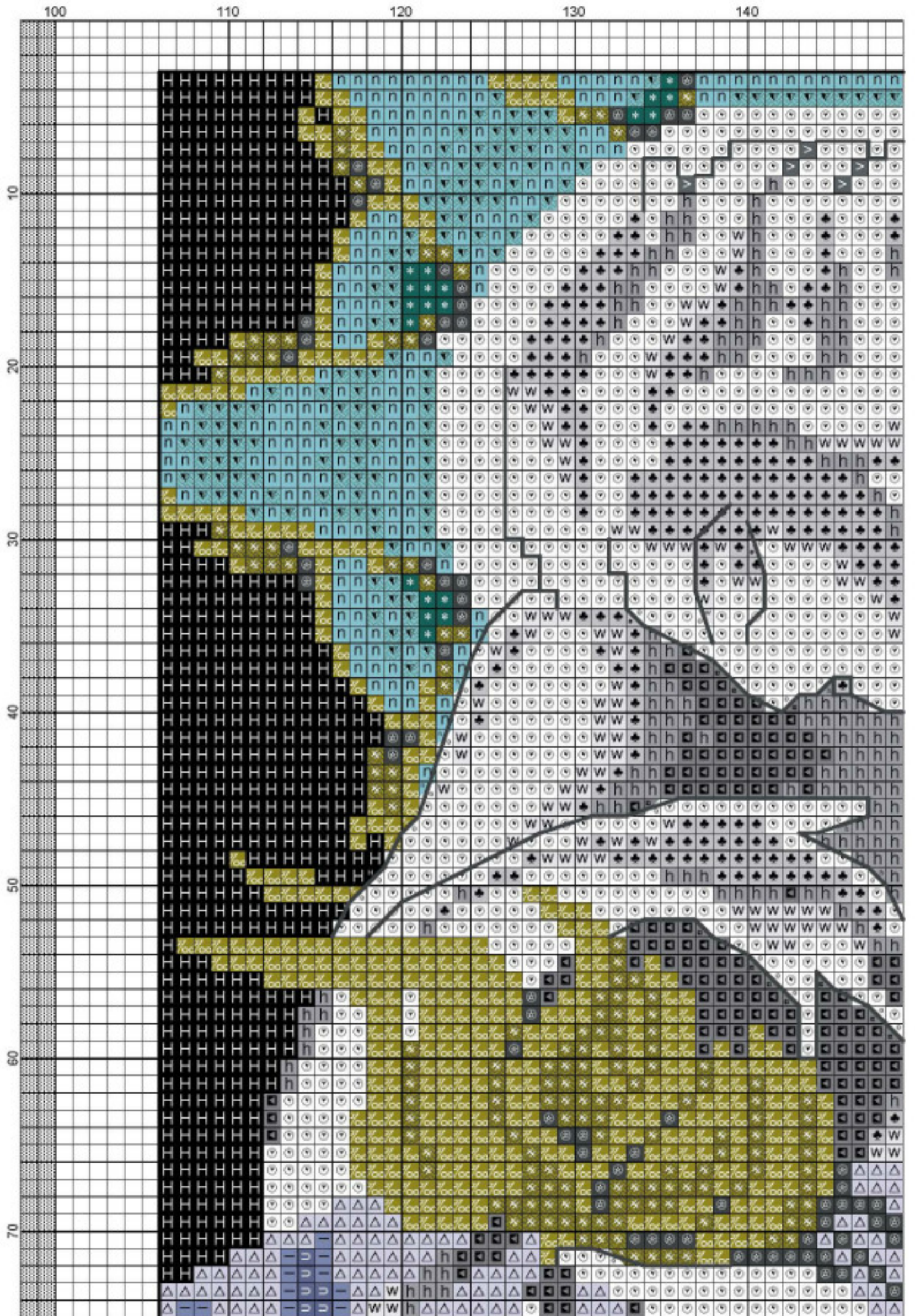


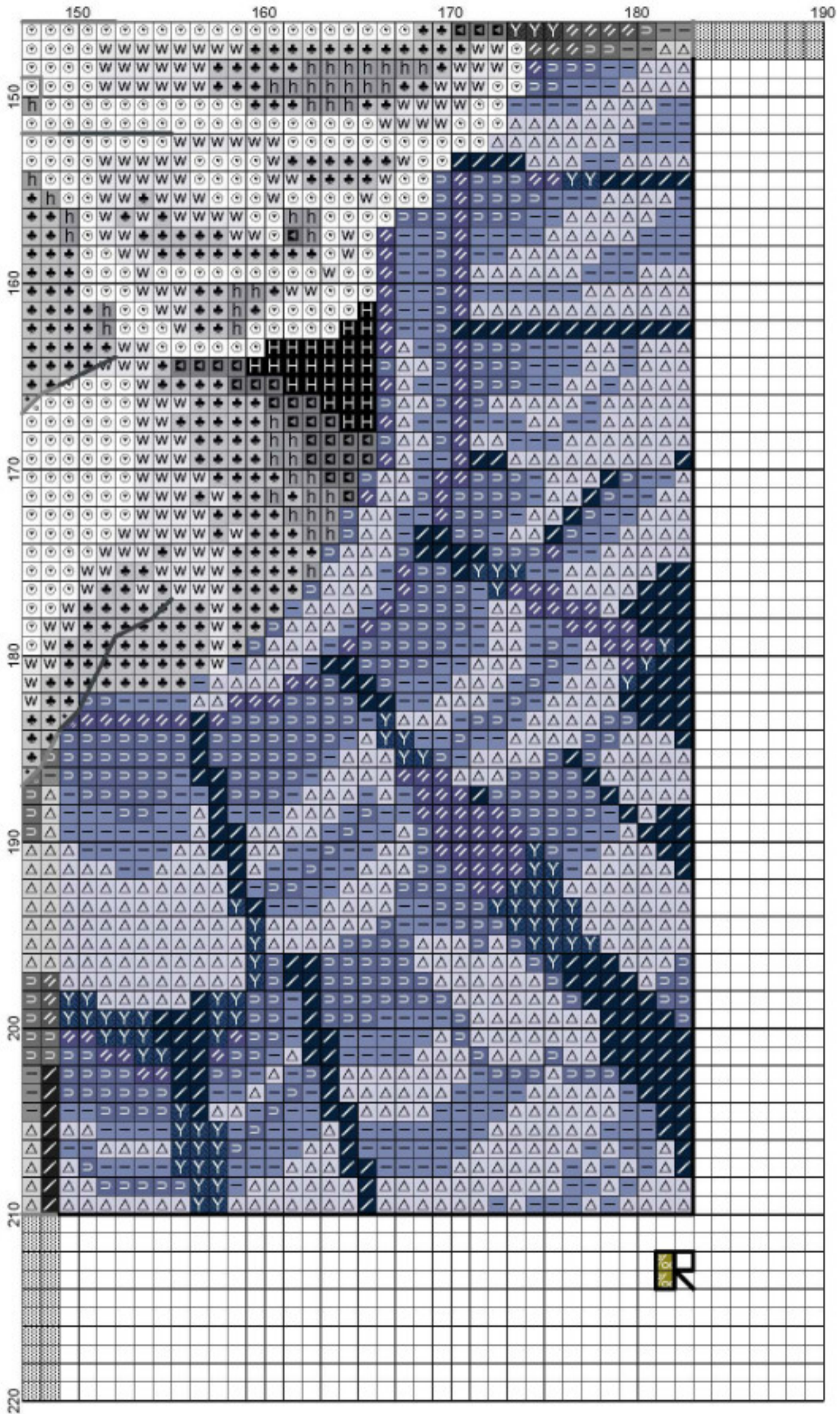




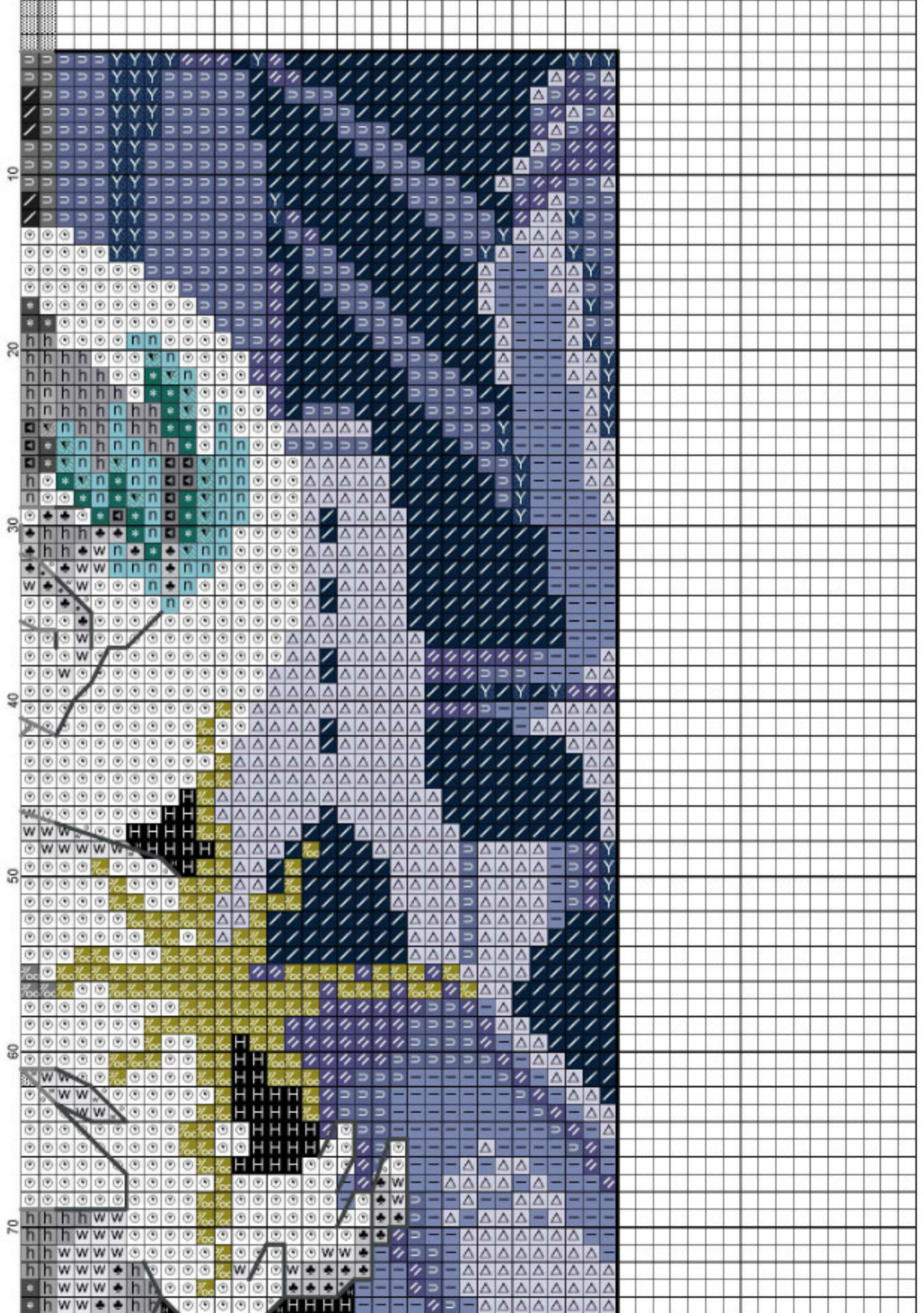


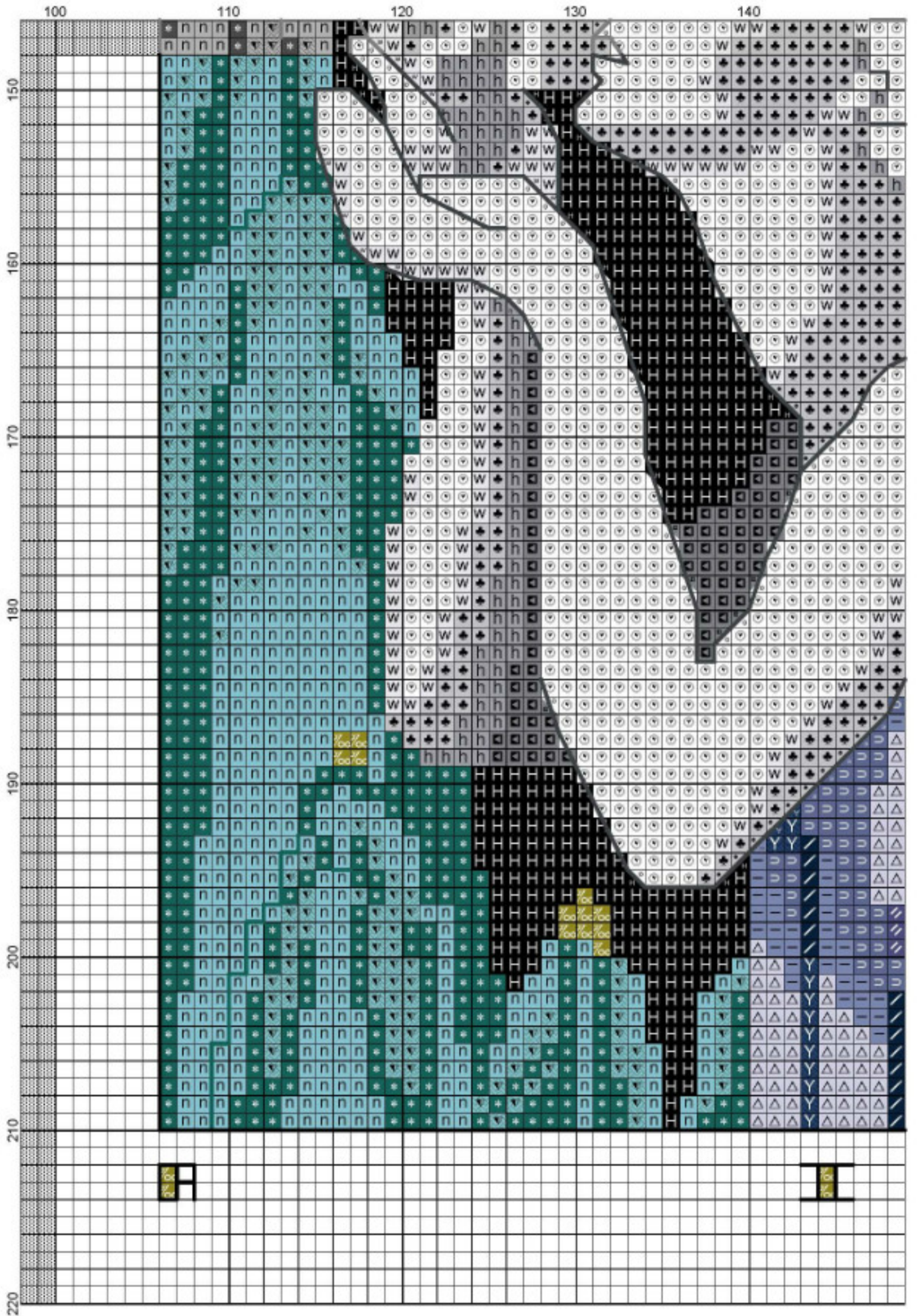


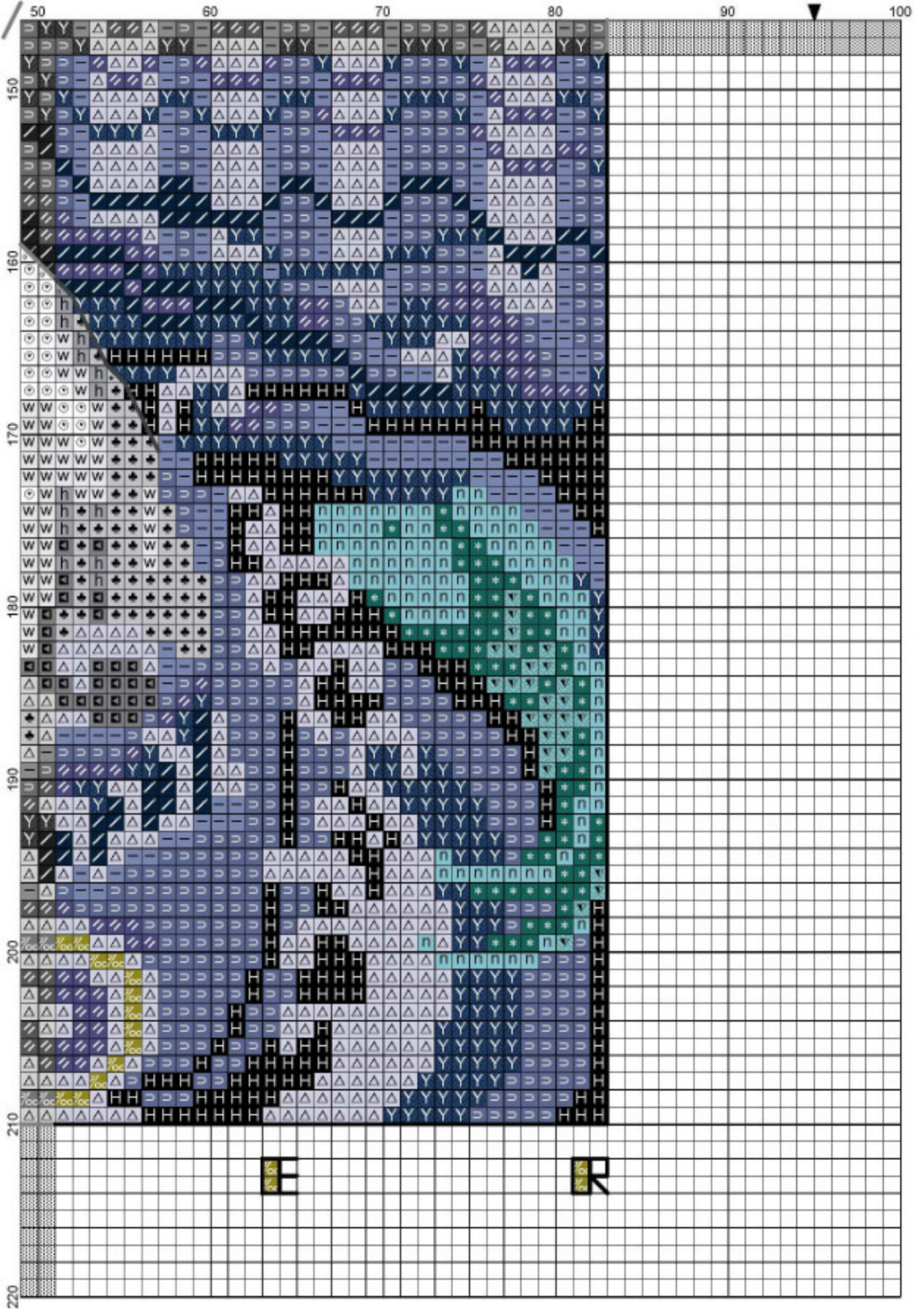


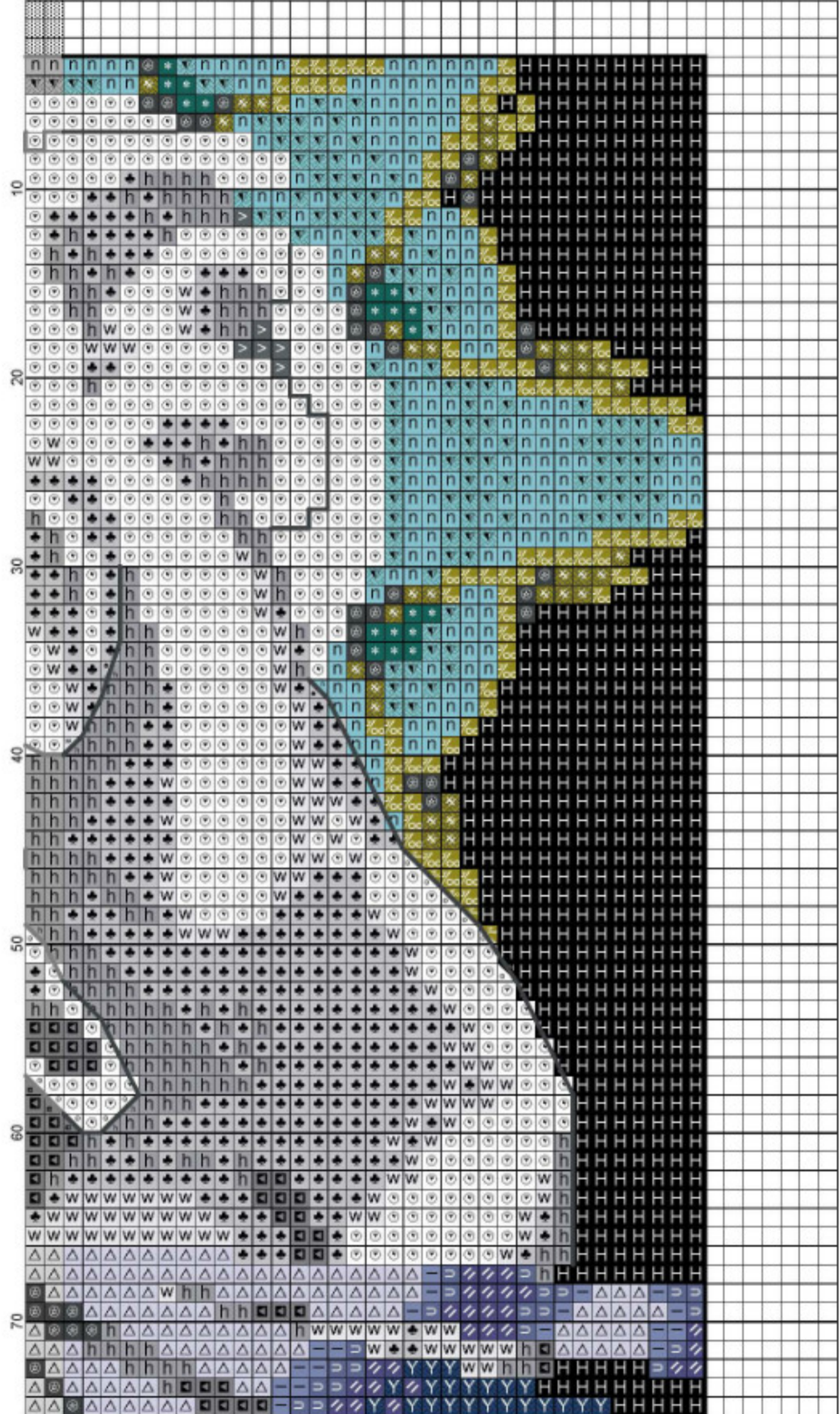




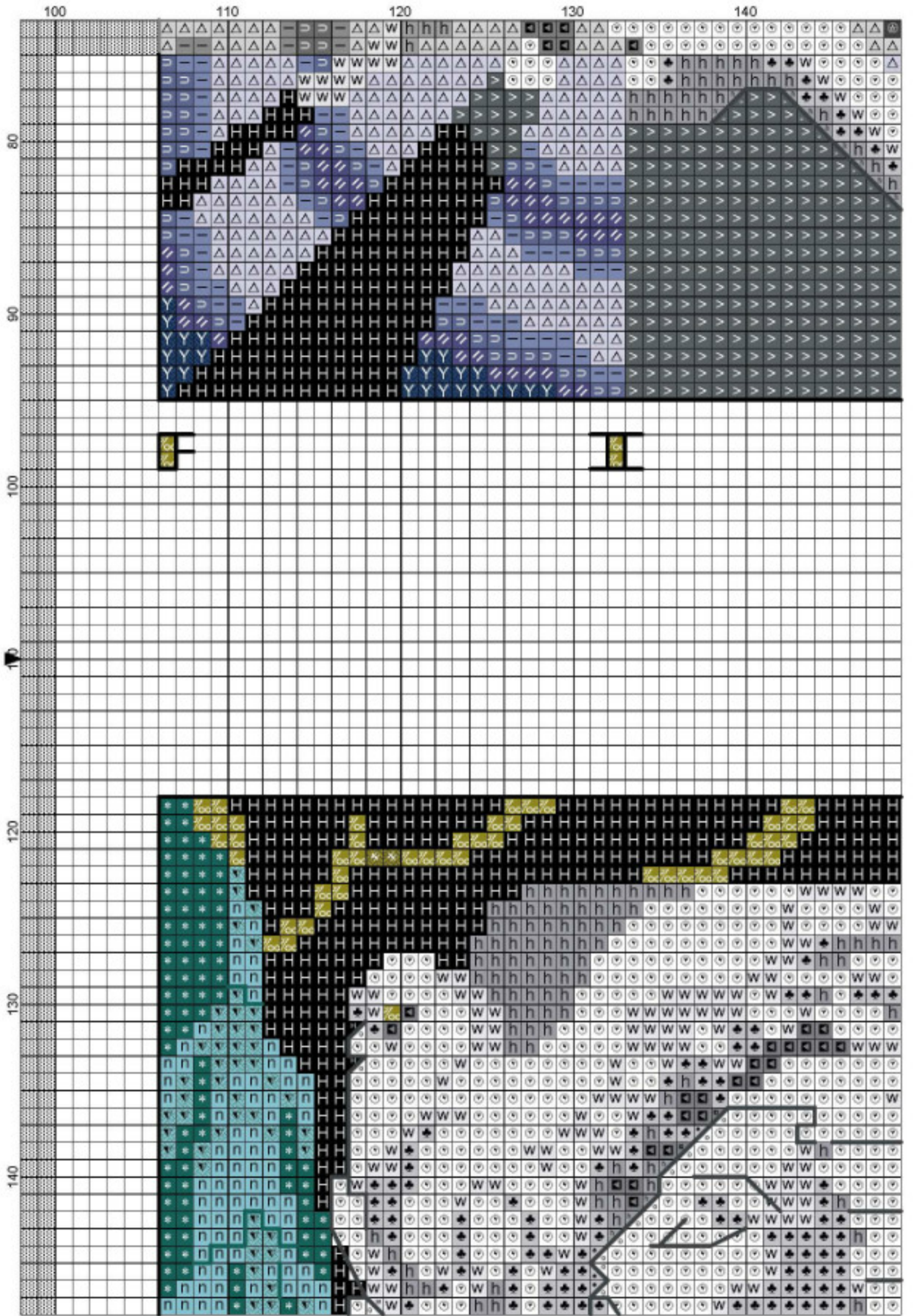








- Legend:**
- DMC-310
  - DMC-White
  - ⦿ DMC-208
  - ⦿ DMC-209
  - ⦿ DMC-211
  - ⦿ DMC-317
  - ⦿ DMC-318
  - ⦿ DMC-336\*
  - ⦿ DMC-413
  - ⦿ DMC-414
  - ⦿ DMC-415
  - ⦿ DMC-762
  - ⦿ DMC-792
  - ⦿ DMC-793
  - ⦿ DMC-823
  - ⦿ DMC-924
  - ⦿ DMC-3807
  - ⦿ DMM-5284
  - ⦿ DMM-5284\*
  - ⦿ KRE-014
  - ⦿ KRE-014\*
  - ⦿ KRE-9294
- Backstitches:**
- DMC-310
  - DMC-413
  - DMC-924






# <No Title>

Grid Size: 190W x 220H  
Design Area: 12,64" x 15,07" (177 x 211 stitches)



## Legend:

	[2]	DMC	310	black		[2]	DMC	762	pearl gray - vy lt
	[2]	DMC	White	white		[2]	DMC	792	cornflower blue - dk
	[2]	DMC	208	lavender - vy dk		[2]	DMC	793	cornflower blue - md
	[2]	DMC	209	lavender - dk		[2]	DMC	823	navy blue - dk
	[2]	DMC	211	lavender - lt		[2]	DMC	924	gray green - vy dk
	[2]	DMC	317	pewter gray		[2]	DMC	3807	cornflower blue
	[2]	DMC	318	steel gray - lt		[1]	DMM	5284	Dark Gold
	[2]	DMC	336*	navy blue		[2]	DMM	5284*	Dark Gold
	[2]	DMC	413	pewter gray - dk		[1]	KRE	014	Sky Blue
	[2]	DMC	414	steel gray - dk		[2]	KRE	014*	Sky Blue
	[2]	DMC	415	pearl gray		[1]	KRE	9294	Periwinkle

## (\*) Blended Entries:

	DMC-336	&	DMC-792	(DMC-navy blue blended with DMC-cornflower blue - dk)
	DMM-5284	&	DMC-413	(-Dark Gold blended with DMC-pewter gray - dk)
	KRE-014	&	DMC-3768	(-Sky Blue blended with DMC-gray green - dk)

## Backstitch Lines:

 DMC-310 black                       DMC-413 pewter gray - dk                       DMC-924 gray green - vy dk

Stitched on 32 count White Linen by Wichelt Imports or Zweigart (2 over 2). If stitched as shown, design area is 11 1/4" x 13 1/2" with a stitch count of 177 x 215. If panels are stitched separately, each has a design area of 4 4/5" x 6. Stitch count is 77 x 96. DMC floss used.

## Backstitch Instructions:

Backstitch with one strand : letters at the bottom of each design in 310.

Backstitch with two strands : purple seashell in the "Water" panel in 413., border of each panel in 310, all faces, shoulders, arms, and hands in 413, Areas using 014 in the "Air" panel in 924.

Blends are one strand each unless otherwise noted.

## Note

9294 fine (#8), 014 fine (#8), 5284 - 1 strand

014 Balger blending filament - 1 strand + 3768 - 2 strands