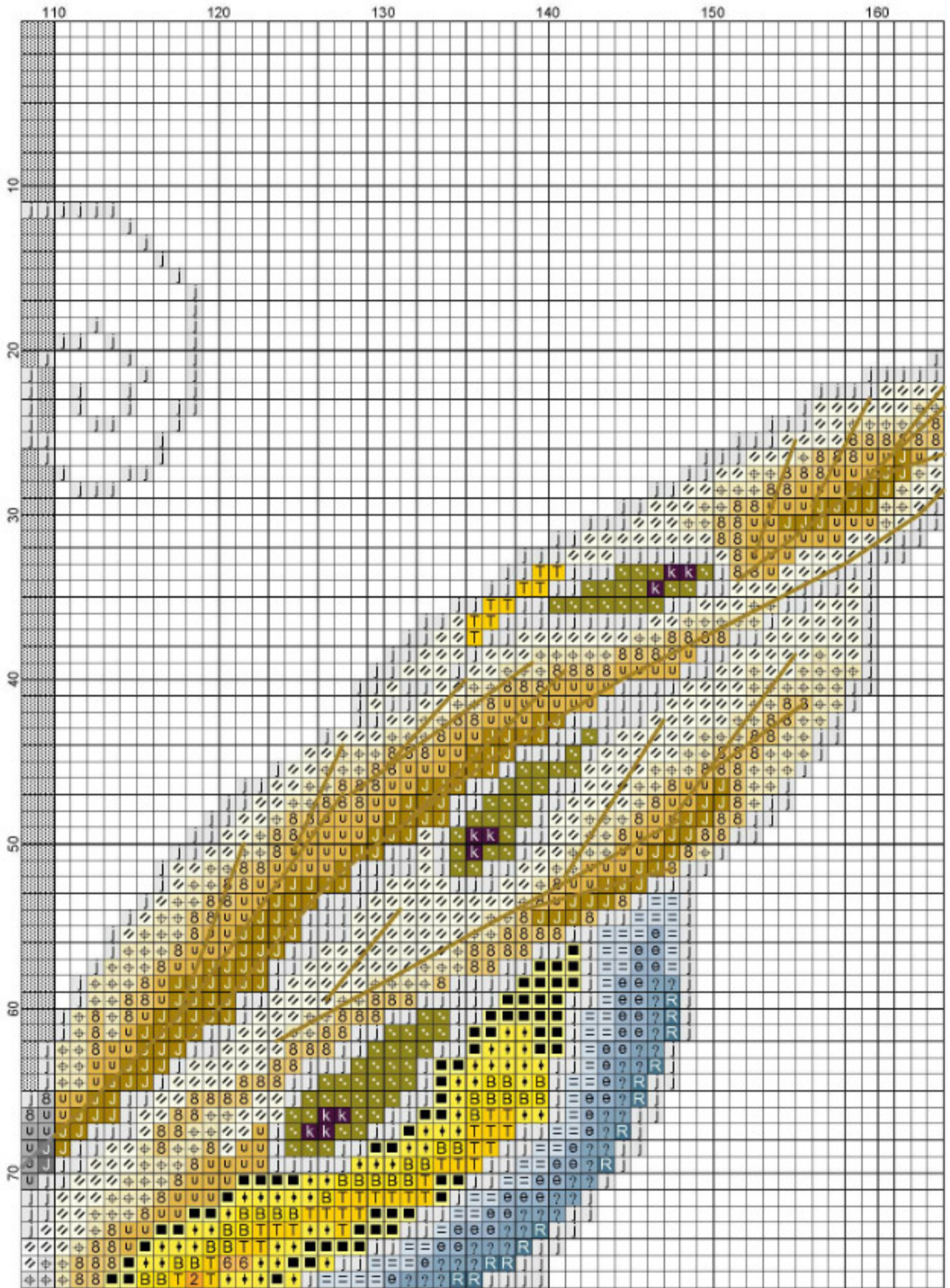
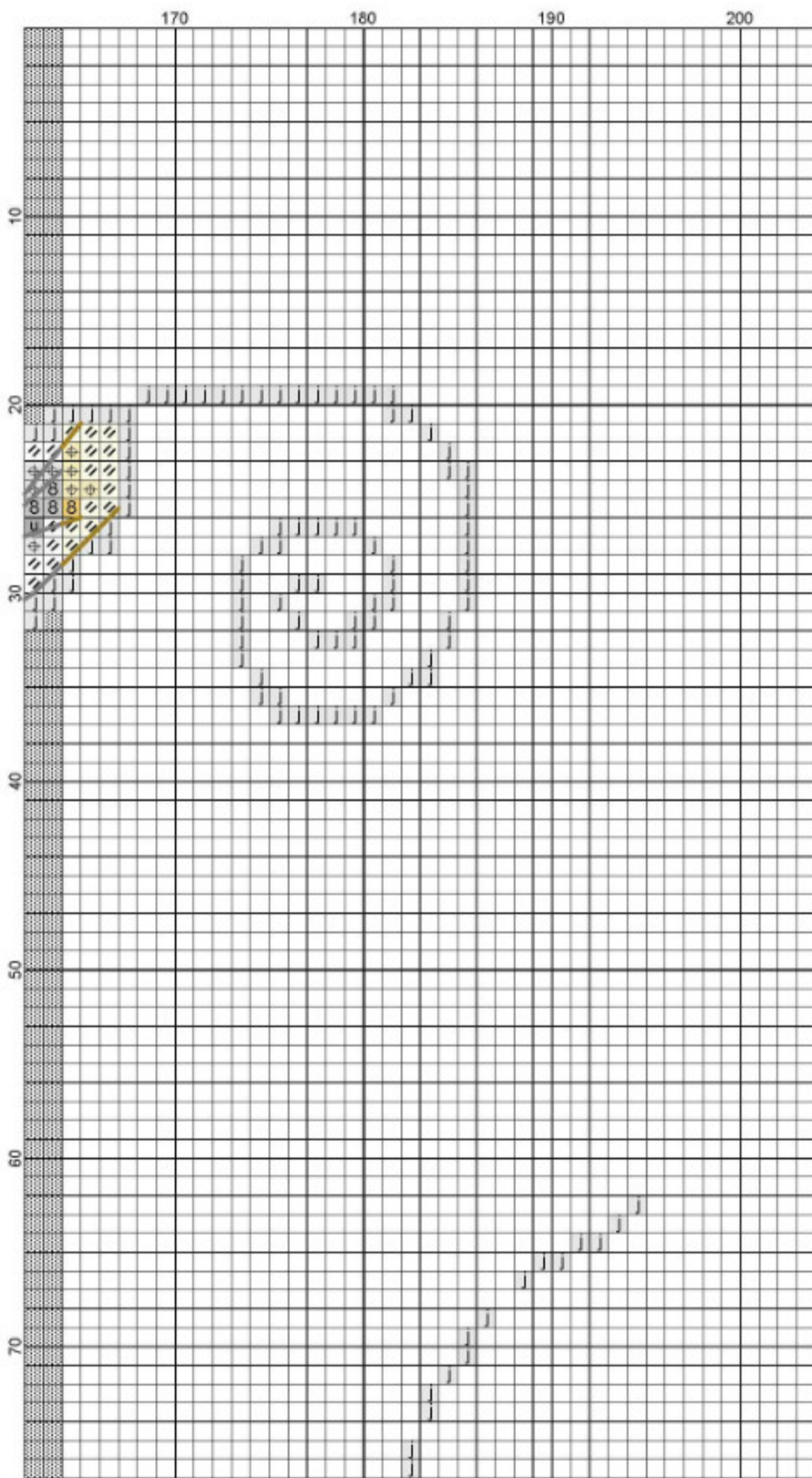


Passione Ricamo



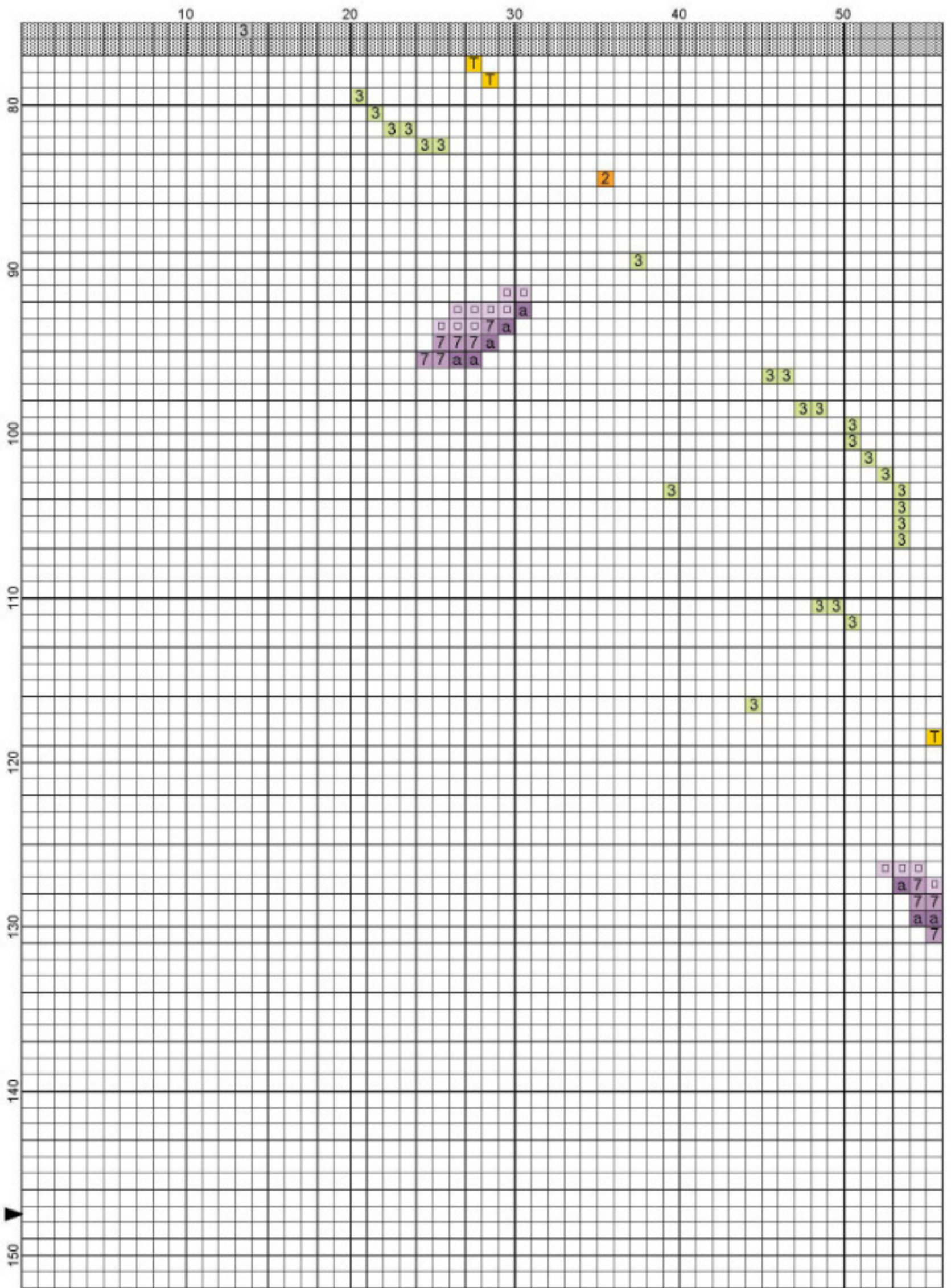
Passione Ricamo

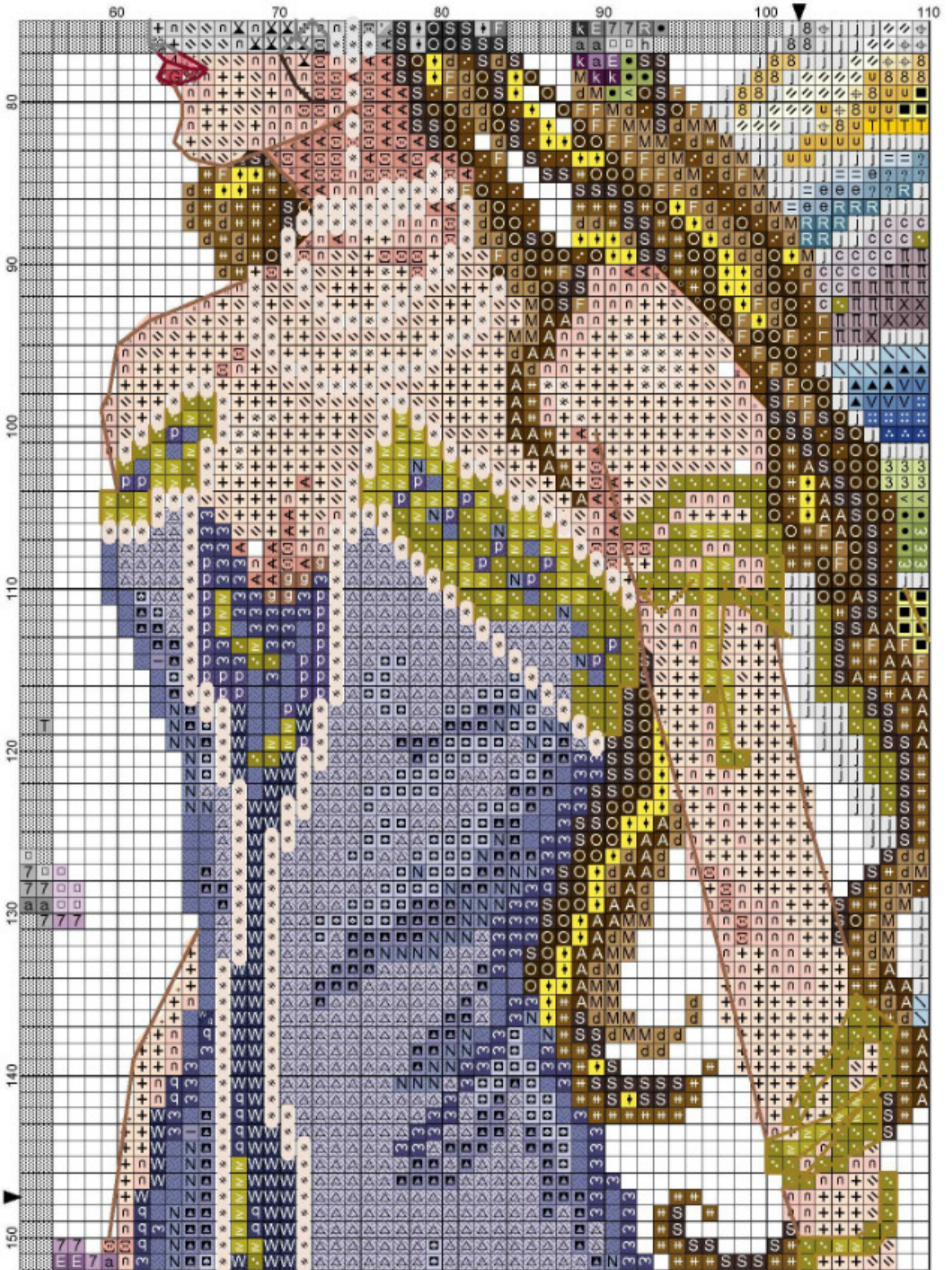


Legend:

- 4 DMC-760
- G DMC-3328
- c DMC-3743
- ll DMC-3042
- X DMC-3041
- P DMC-3740
- DMC-211
- I DMC-211*
- 7 DMC-210
- a DMC-209
- E DMC-208
- 7 DMC-327
- k DMC-550
- DMC-155
- ⊗ DMC-155*
- P DMC-333*
- DMC-157*
- N DMC-793*
- DMC-793*
- DMC-3807*
- 5 DMC-792
- 3 DMC-158
- W DMC-791*
- q DMC-791
- ∇ DMC-800
- ▲ DMC-809
- V DMC-799
- :: DMC-798
- : DMC-797
- = DMC-3753
- e DMC-3752
- ? DMC-932
- R DMC-931
- 3 DMC-472
- < DMC-471
- DMC-470
- ω DMC-469
- ∕ DMC-746
- ⊕ DMC-677
- 8 DMC-676
- u DMC-729
- J DMC-3829
- DMC-445
- † DMC-307
- B DMC-973
- T DMC-444
- h DMC-743
- 6 DMC-742
- 2 DMC-741
- X DMC-967
- + DMC-948
- * DMC-948*
- N DMC-948*
- n DMC-754
- 8 DMC-758
- < DMC-3778
- 9 DMC-632
- M DMC-437
- d DMC-436
- F DMC-435
- F DMC-434
- # DMC-433
- DMC-801
- A DMC-898
- O DMC-938
- S DMC-3371
- PBC-PB01
- > PBC-PB26
- J PBC-PB10
- * MHG-123

Passione Ricamo

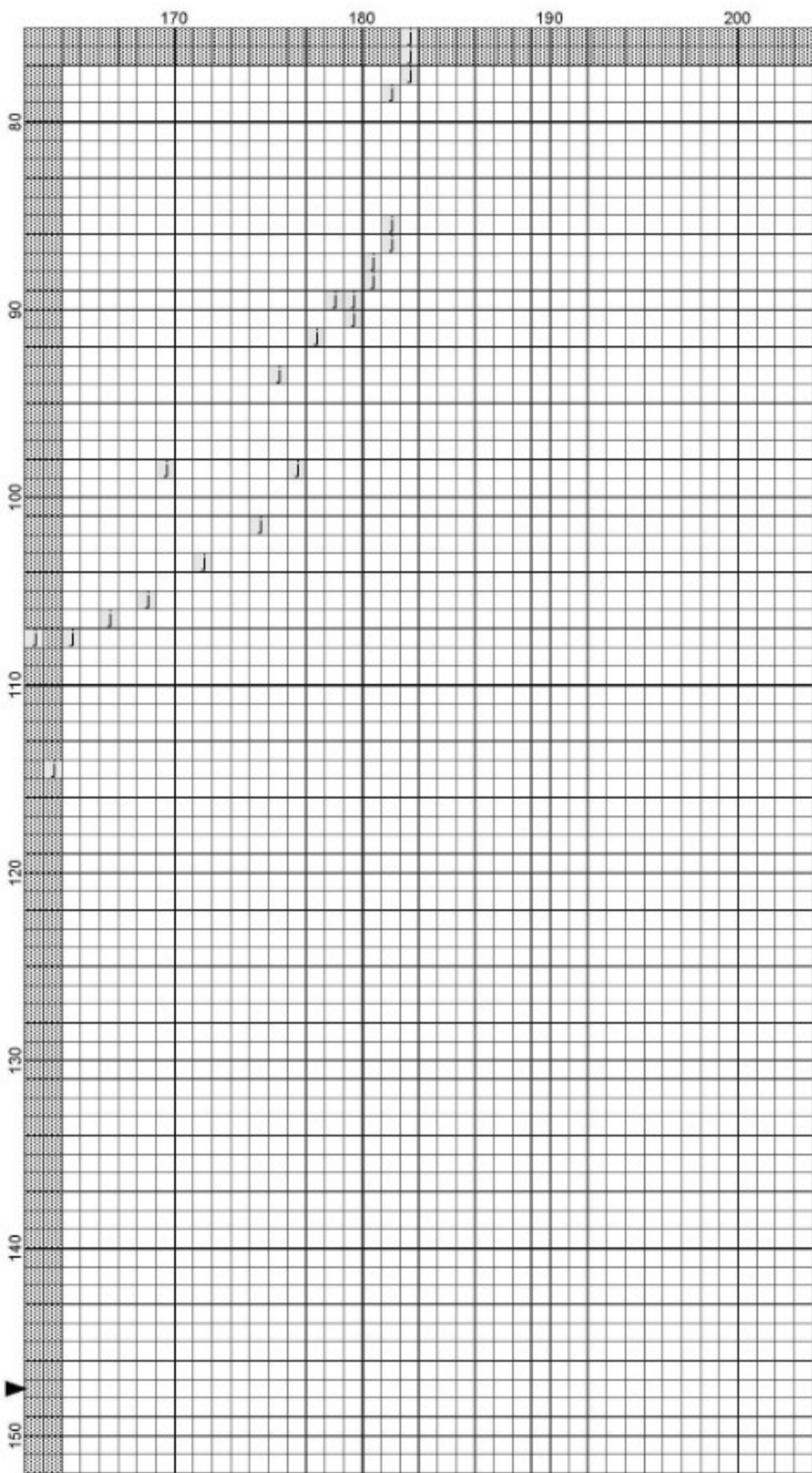




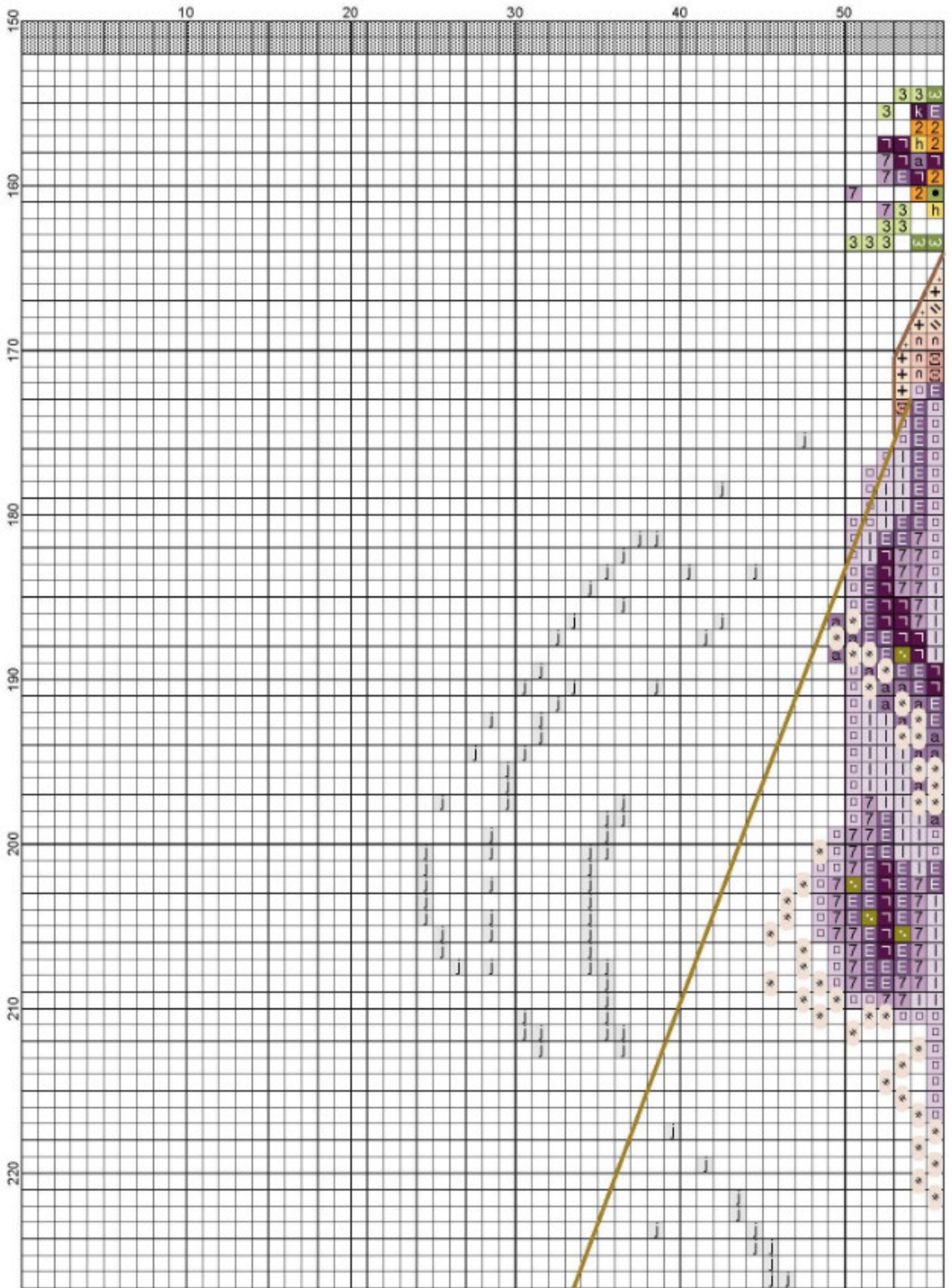
Passione Ricamo

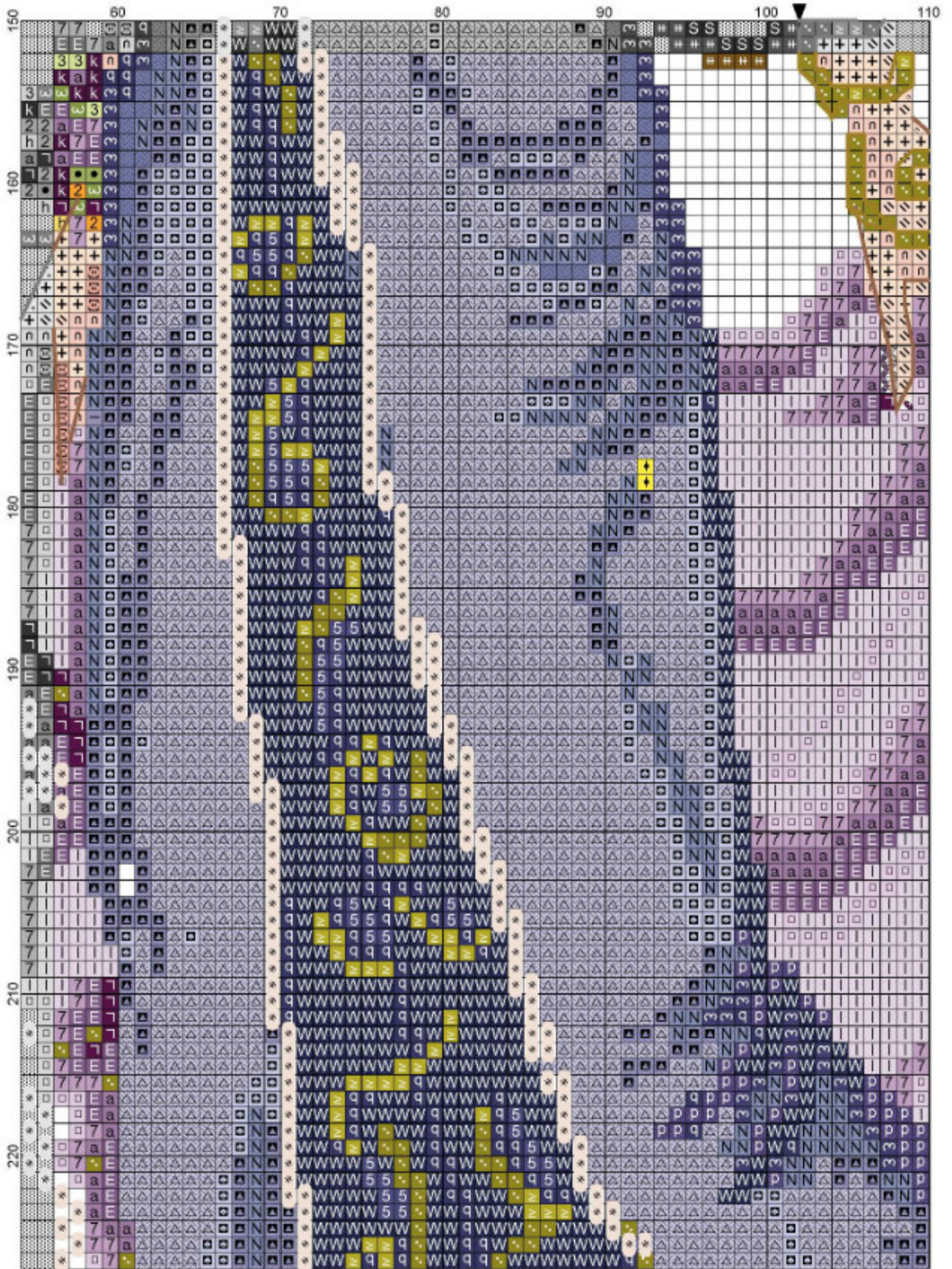
Passione Ricamo

RL30 Serendipity Fay by Jazmin

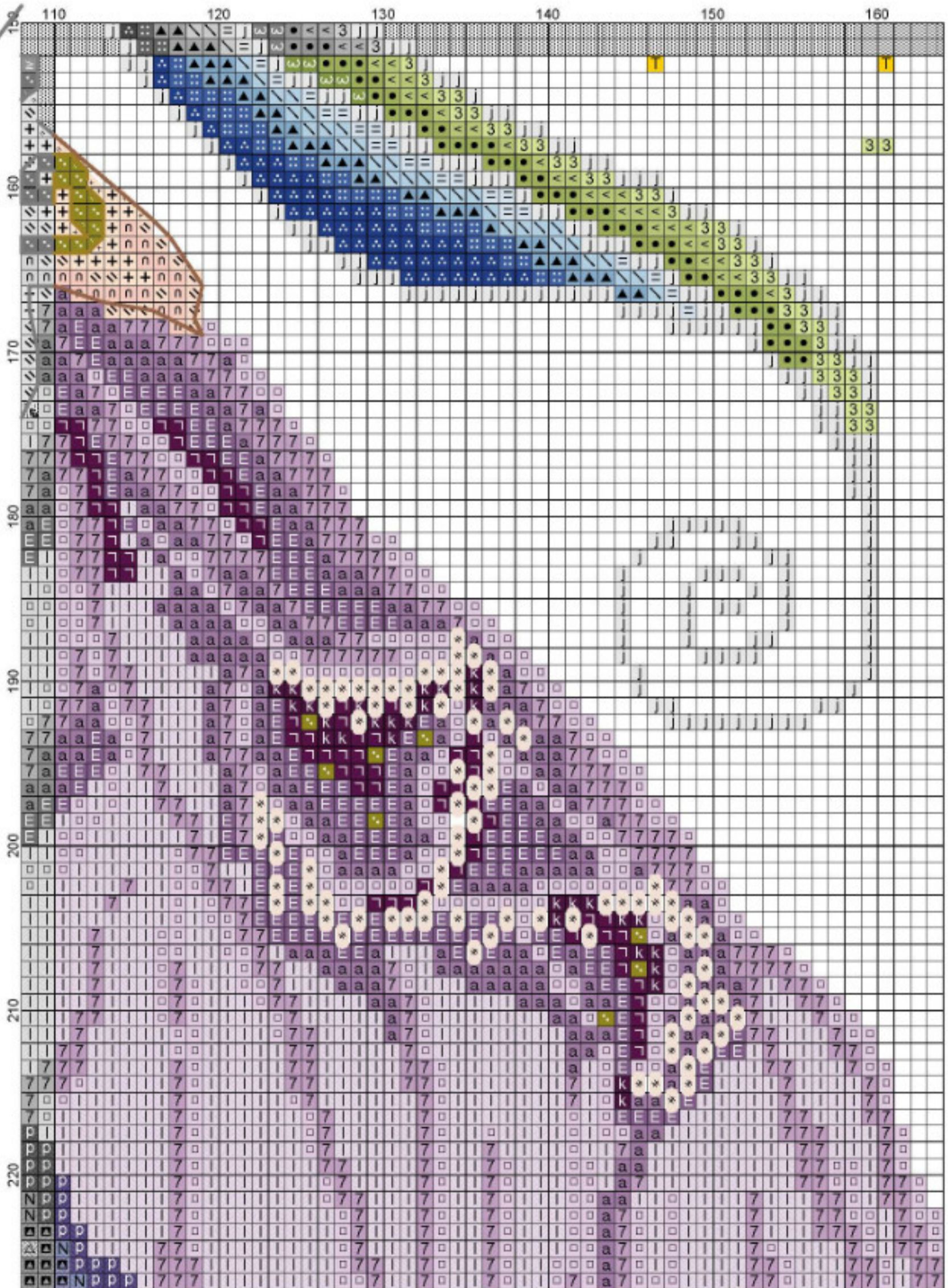


- Backstitches:
— DMC-777
— DMC-632
— DMC-3371
— PBC-PB37
- Beads:
• MHG-123

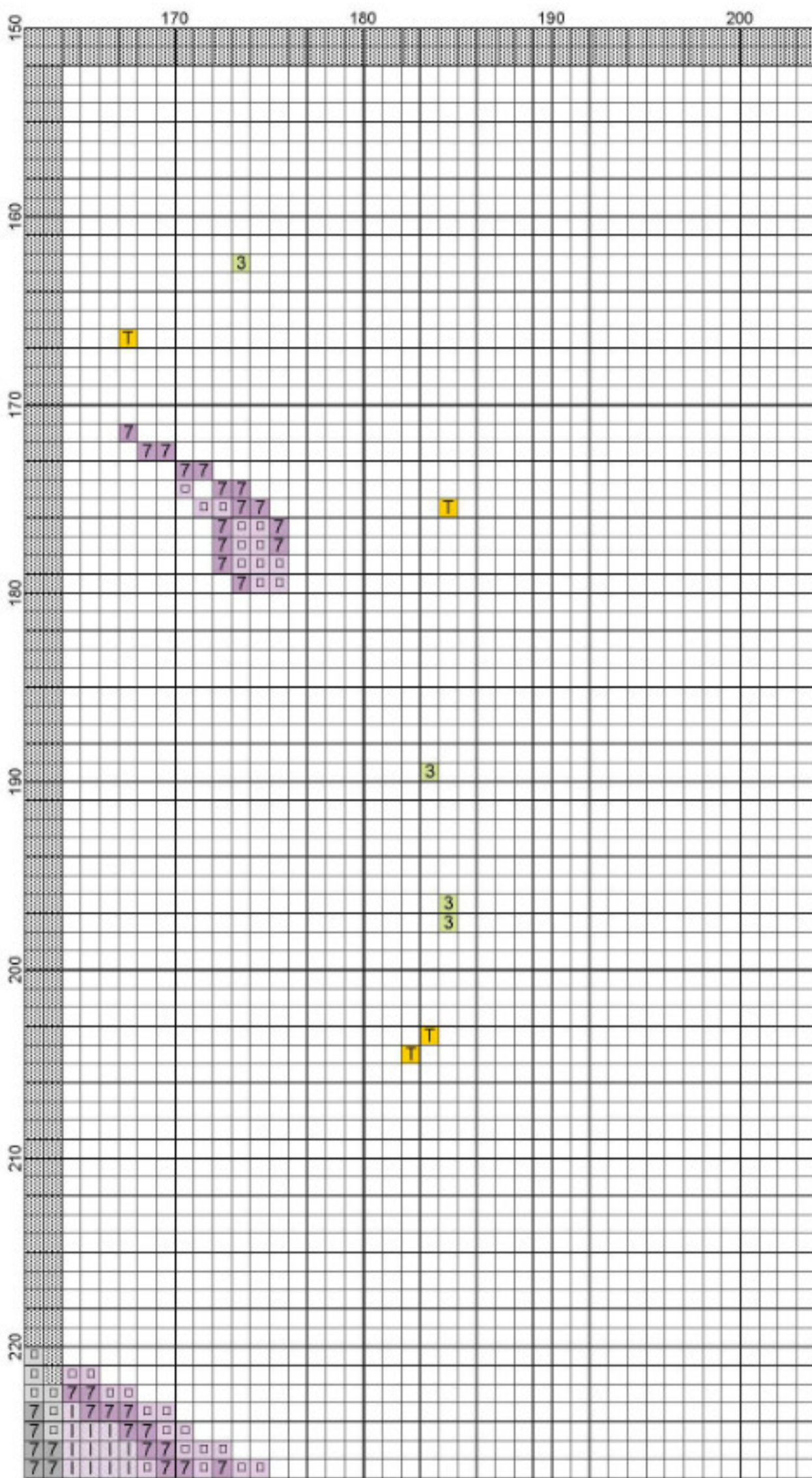




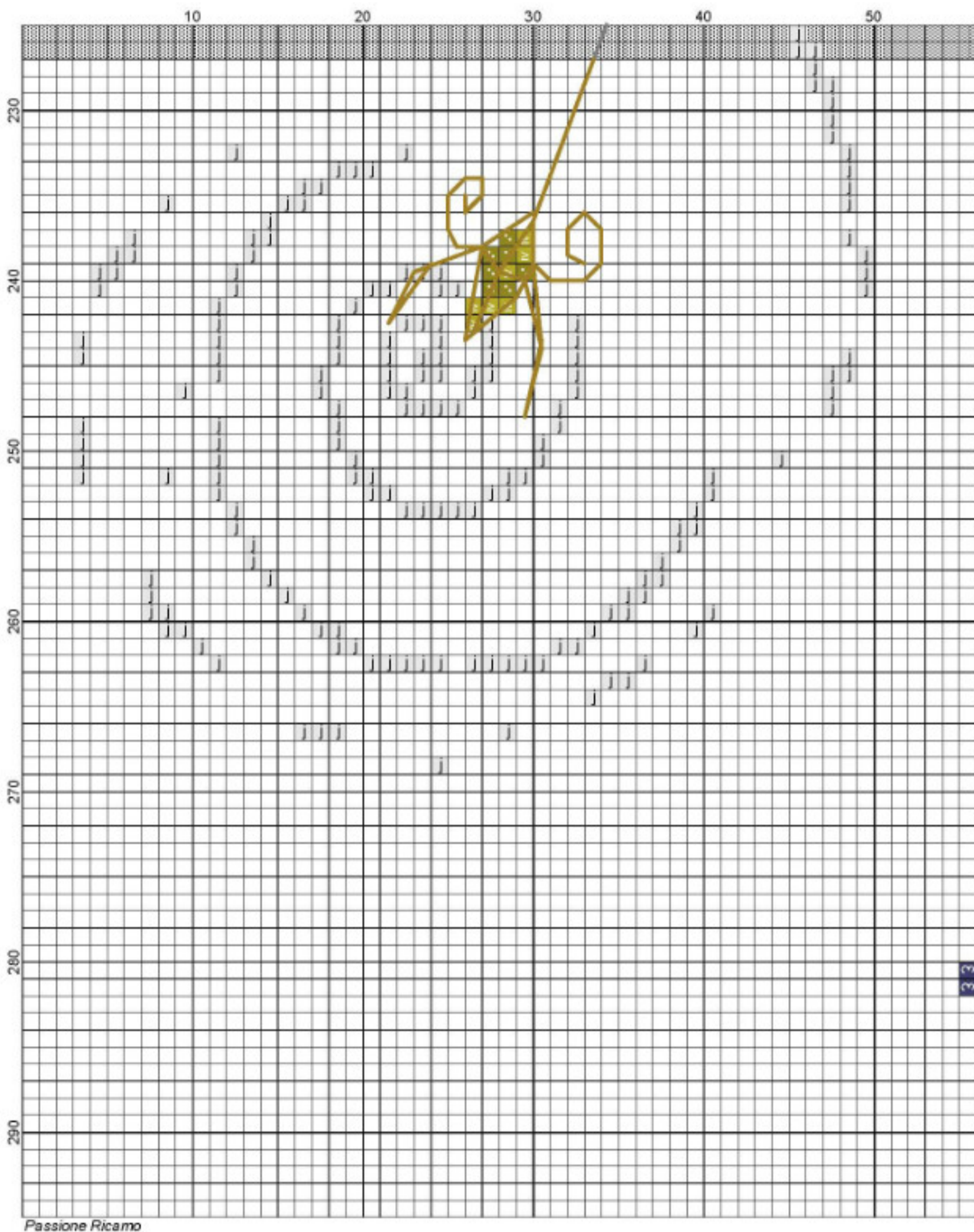
Passione Ricamo

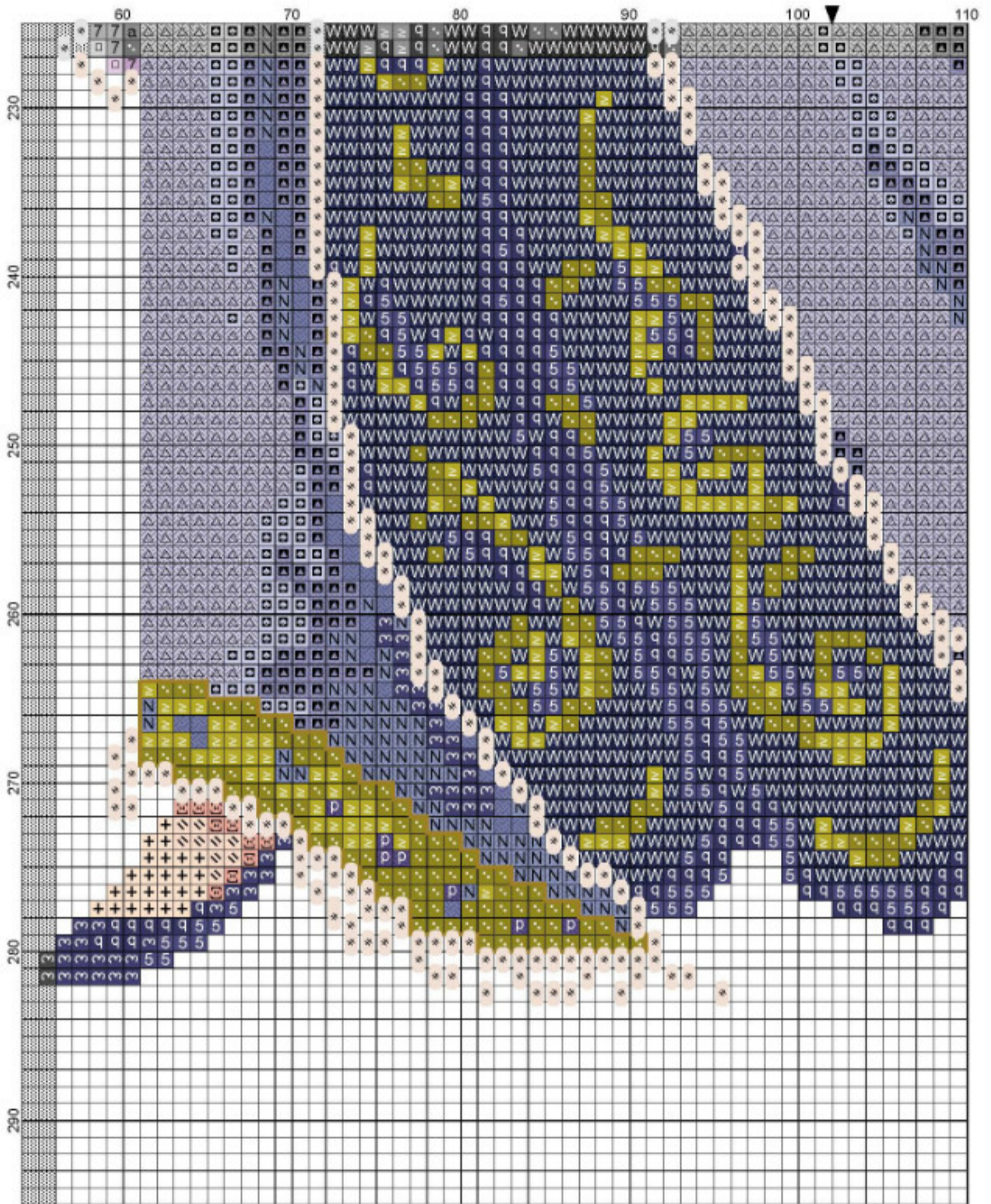


Passione Ricamo

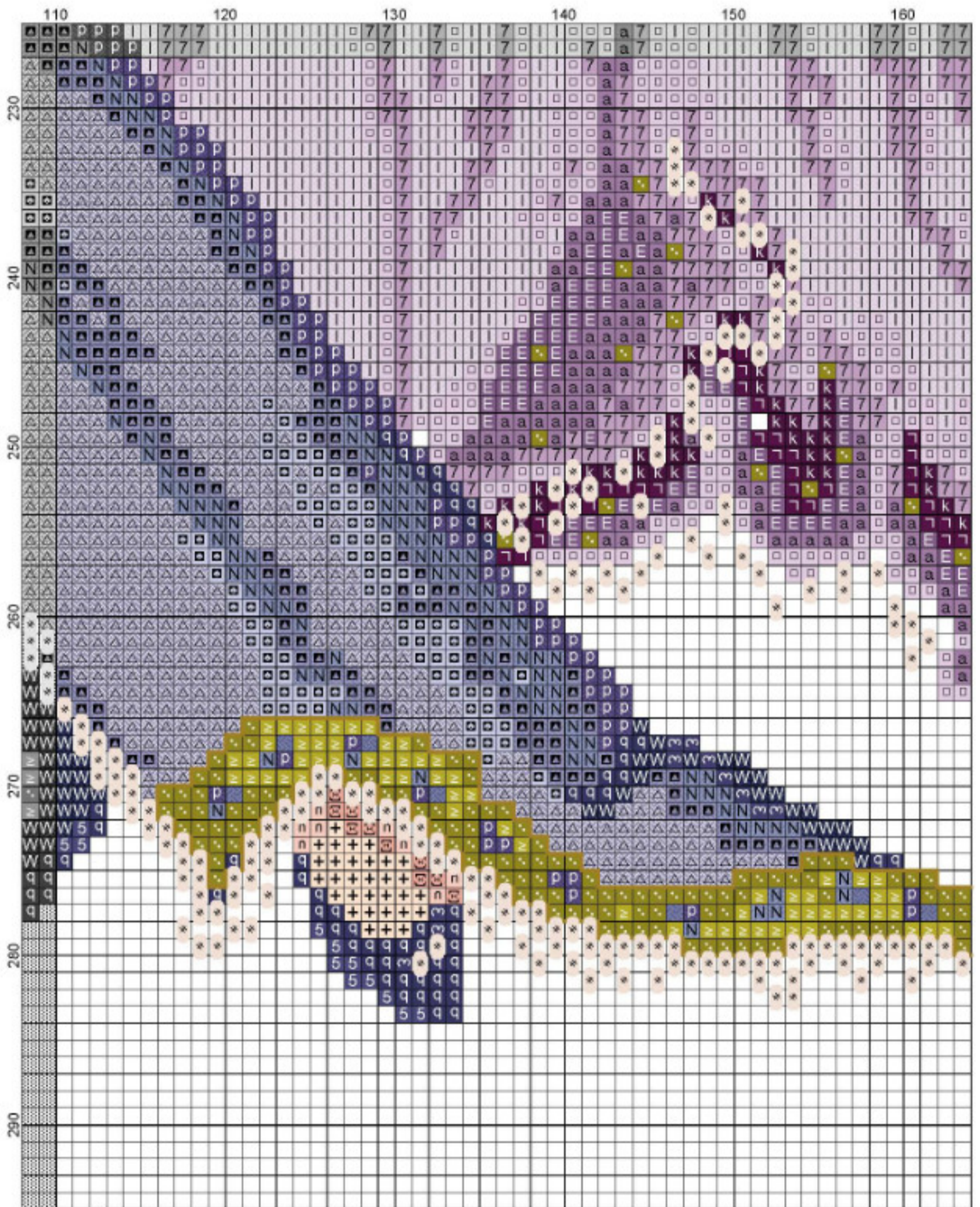


Passione Ricamo

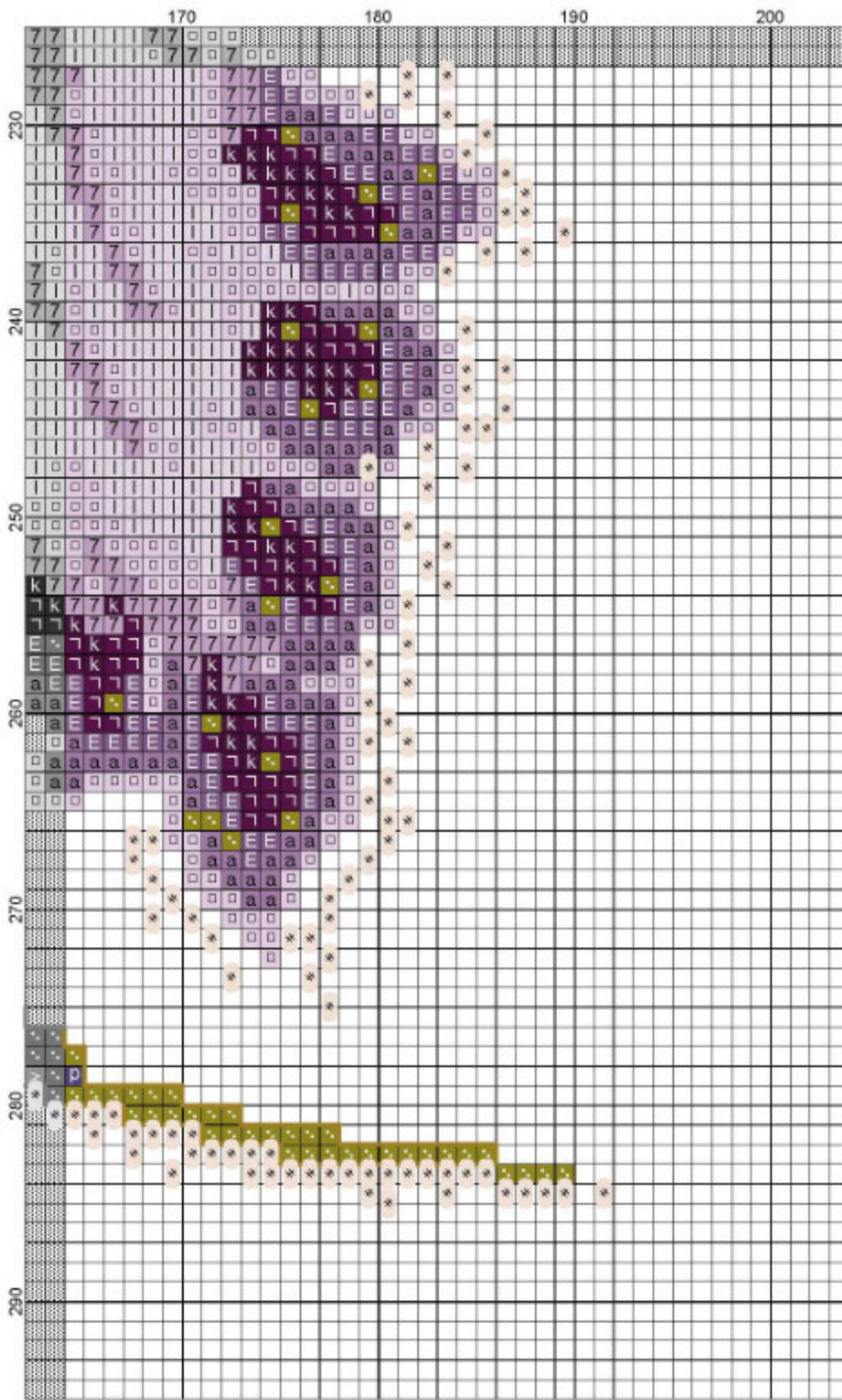




Passione Ricamo



Passione Ricamo



Passione Ricamo

RL30 Serendipity Fay

Author: Jazmin
 Copyright: Passione Ricamo
 Website: www.passionericamo.com
 Fabric: Jobelan Whisper by Polistithes
 Grid Size: 204W x 295H
 Design Area: 13,79" x 20,07" (193 x 281 stitches)

Legend:

	[2] DMC 760 salmon		[2] DMC 470 avocado green - lt
	[2] DMC 3328 salmon - dk		[2] DMC 469 avocado green
	[2] DMC 3743 antique violet - vy lt		[2] DMC 746 off white
	[2] DMC 3042 antique violet - lt		[2] DMC 677 old gold - vy lt
	[2] DMC 3041 antique violet - md		[2] DMC 676 old gold - lt
	[2] DMC 3740 antique violet - dk		[2] DMC 729 old gold - md
	[2] DMC 211 lavender - lt		[2] DMC 3829 old gold - vy dk
	[2] DMC 211* lavender - lt		[2] DMC 445 lemon - lt
	[2] DMC 210 lavender - md		[2] DMC 307 lemon
	[2] DMC 209 lavender - dk		[2] DMC 973 canary - br
	[2] DMC 208 lavender - vy dk		[2] DMC 444 lemon - dk
	[2] DMC 327 violet - vy dk		[2] DMC 743 yellow - md
	[2] DMC 550 violet - vy dk		[2] DMC 742 tangerine - lt
	[2] DMC 155 md dk blue violet		[2] DMC 741 tangerine - md
	[2] DMC 155* md dk blue violet		[2] DMC 967 apricot - vy lt
	[2] DMC 333* blue violet - vy dk		[2] DMC 948 peach - vy lt
	[2] DMC 157* cornflower blue - vy lt		[2] DMC 948* peach - vy lt
	[2] DMC 793* cornflower blue - md		[2] DMC 948* peach - vy lt
	[2] DMC 793* cornflower blue - md		[2] DMC 754 peach - lt
	[2] DMC 3807* cornflower blue		[2] DMC 758 terra cotta - vy lt
	[2] DMC 792 cornflower blue - dk		[2] DMC 3778 terra cotta - lt
	[2] DMC 158 md vy dk cornflower blue		[2] DMC 632 desert sand - ul vy dk
	[2] DMC 791* cornflower blue - vy dk		[2] DMC 437 tan - lt
	[2] DMC 791 cornflower blue - vy dk		[2] DMC 436 tan
	[2] DMC 800 delft blue - pl		[2] DMC 435 brown - vy lt
	[2] DMC 809 delft blue		[2] DMC 434 brown - lt
	[2] DMC 799 delft blue - md		[2] DMC 433 brown - md
	[2] DMC 798 delft blue - dk		[2] DMC 801 coffee brown - dk
	[2] DMC 797 royal blue		[2] DMC 898 coffee brown - vy dk
	[2] DMC 3753 antique blue - ul vy		[2] DMC 938 coffee brown - ul dk
	[2] DMC 3752 antique blue - vy lt		[2] DMC 3371 black brown
	[2] DMC 932 antique blue - lt		[2] PBC PB01 Bright Gold
	[2] DMC 931 antique blue - md		[2] PBC PB26 Aztec Gold
	[2] DMC 472 avocado green - ul lt		[2] PBC PB10 White Pearl
	[2] DMC 471 avocado green - vy lt		[2] MHG 123 Cream

(*) Blended Entries:

	(DMC-lavender - lt blended with -Pearl)
	(DMC-md dk blue violet blended with DMC-white)
	(DMC-blue violet - vy dk blended with DMC-cornflower blue - vy dk)
	(DMC-cornflower blue - vy lt blended with DMC-lavender - lt)
	(DMC-cornflower blue - md blended with DMC-blue violet - md)
	(DMC-cornflower blue - md blended with DMC-lavender - md)
	(DMC-cornflower blue blended with DMC-md dk blue violet)
	(DMC-cornflower blue - vy dk blended with DMC-navy blue - vy dk)
	(DMC-peach - vy lt blended with DMC-white)
	(DMC-peach - vy lt blended with DMC-peach - lt)

Backstitch Lines:

	DMC-777 raspberry - vy dk		DMC-3371 black brown
	DMC-632 desert sand - ul vy dk		PBC-PB37 Dark Antique Gold

Beads:

INSTRUCTIONS:

Backstitch 1 Strand

3371 - For eyebrow, eyelash, hair

632 - for the face and shoulder.. All the Skin

777 - for the lips

Backstitch using Rainbow Gallery Petite Treasure Braid

PB37 for the magic wand and the veins in the wings, the dress and the jewels on the harm