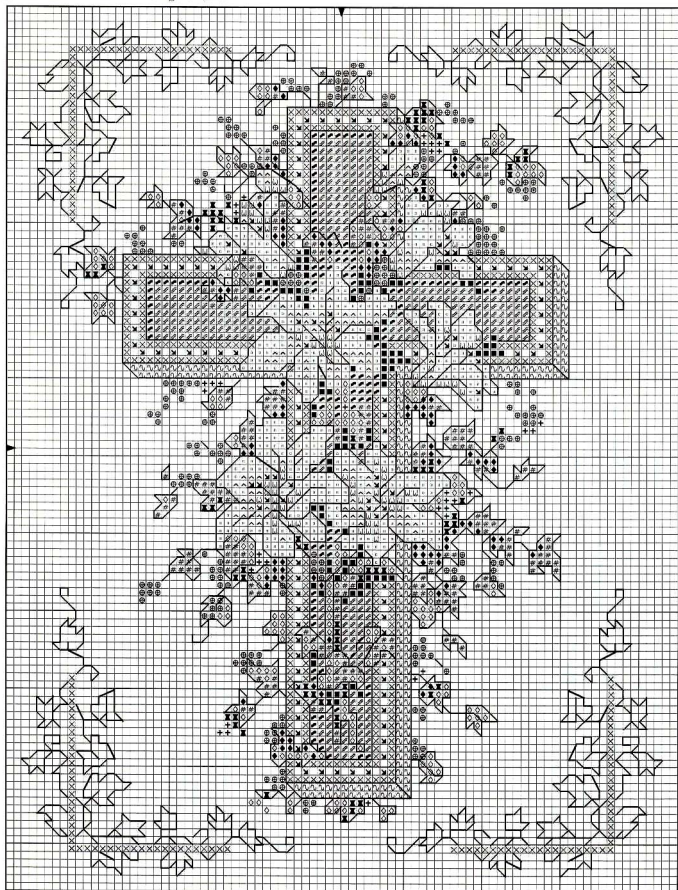
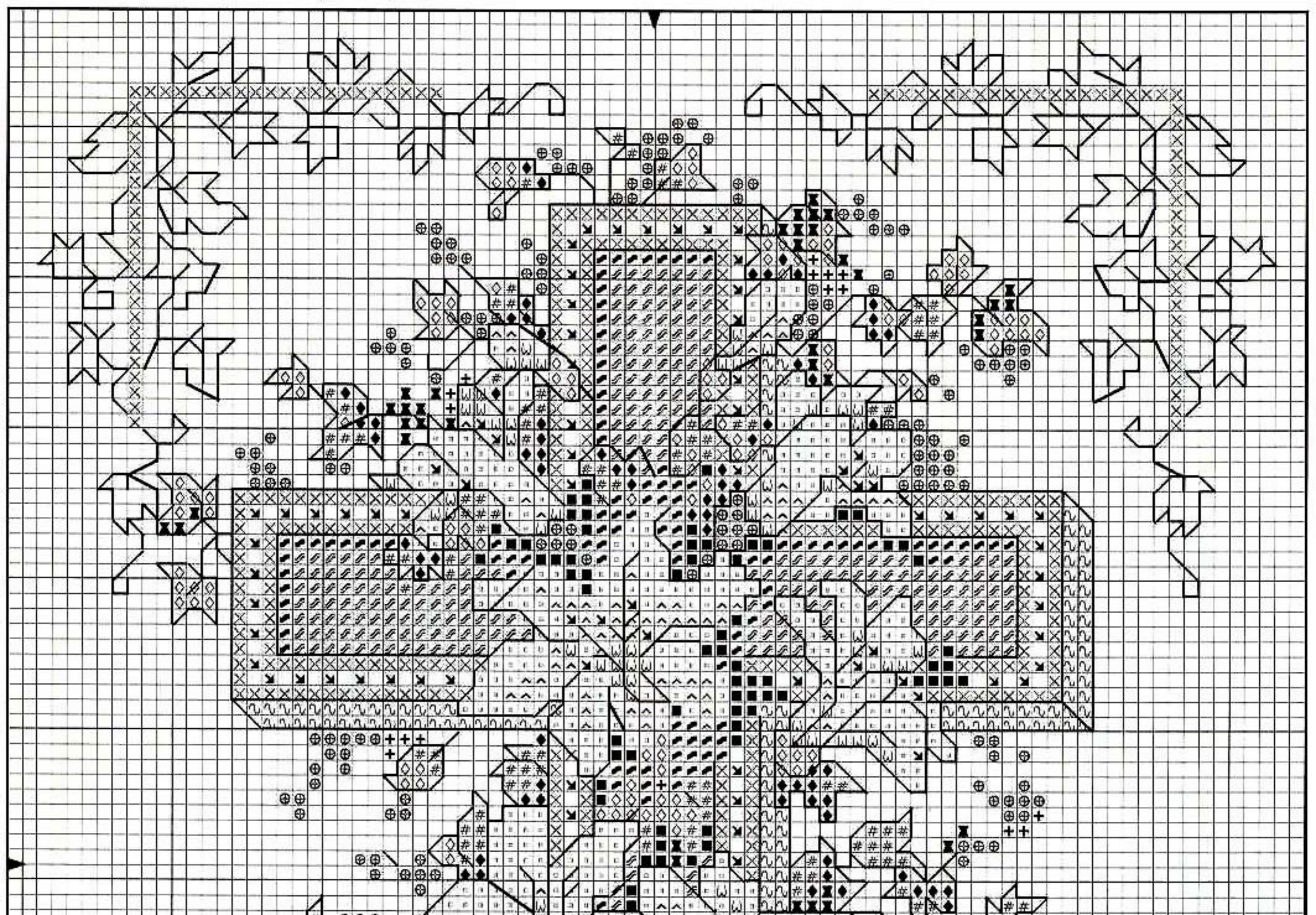


Lilies On The Cross

Design size: 82 wide x 110 high

Cover model: stitched (over two threads) on a 12" x 15" piece of 28-count cream Cashel linen,
shown in a 7 1/8" x 10" gold frame





	Anchor	Coats	DMC	
□ = white	1	1001	blanc	
◇ = lt yellow-green	253	6253	472	
⊕ = med yellow-green	265	6266	3347	
	med dk yellow-green	267	6267	469
⊗ = dk yellow-green	856	5898	370	
# = med green	242	6225	989	
◆ = dk green	210	6213	562	
^ = lt blue	928	7053	3811	
ω = med blue	1039	7169	518	
∞ = med turquoise	433	7001	996	
♣ = dk turquoise	169	7169	806	
∩ = lt blue-gray	1033	7050	932	
■ = very dk blue-gray	1036	7980	3750	
⊕ = med rust	1048	3336	3776	

	Anchor	Coats	DMC	
⬇ = dk rust	1049	5349	3826	
	gray	400	8512	317

Kreinik #8 Braid

× = gold	002
----------	-----

Kreinik Cable

gold (or metallic gold thread)	002P
-----------------------------------	------

= Backstitch:	
	yellow-green leaves & stems— <i>med dk yellow-green</i>
	green leaves & stems— <i>dk green</i>
	stamens— <i>dk rust</i>
	cross, flowers— <i>gray</i>
	border patterns— <i>gold cable</i>

