

# Artecy

## CROSS STITCH

### Deco Lady



Cross Stitch Design by Tereena Clarke.

Completed Size = 154w X 217h Stitches

14 Count, 11w X 15.5h inches

16 Count, 10w X 13.5h inches

18 Count, 8.5w X 12h inches

Uses 14 DMC cotton colours. Only full cross stitches are used in this pattern.

# *Pattern Instructions*

\* This pattern can be worked on any fabric type, colour or count you prefer. To work out the size of the finished article, take the number of stitches wide and high and divide it by the count of your fabric (e.14,16,18 count aida etc) to get the size in inches. Times it by 2.54 to get centimetres. We have the sizes in inches shown on the previous page. Also leave at least a few inches of fabric around each side of the design to assist in framing. The higher the fabric count the smaller the completed project will be.

\* To put the pattern together look in the top and bottom corners. The page numbers in brackets show which page number it joins up to. Page 1 always starts at the top left hand side of the pattern. Our pages also have a shaded grey section. This indicates a 3 row overlap from adjoining pages to assist with reading the pattern. PLEASE DO NOT RESTITCH THIS AREA.

\* You should begin at the centre of the pattern. To find the centre of the pattern it is just a matter of laying the pattern out and locating the arrows at the top and left hand side of the patterns, they are determined by dividing the stitch numbers wide and high in half. Where the two points meet in the middle, that is the centre.

\* If you need more assistance to find the middle of your pattern or the page layout, please see the notes section on the colour symbol chart. The easiest way to stitch this pattern, as it has multiple pages, is to stitch one page at a time.

\* We suggest using two strands of floss for each stitch and one strand for backstitching if the pattern calls for it.

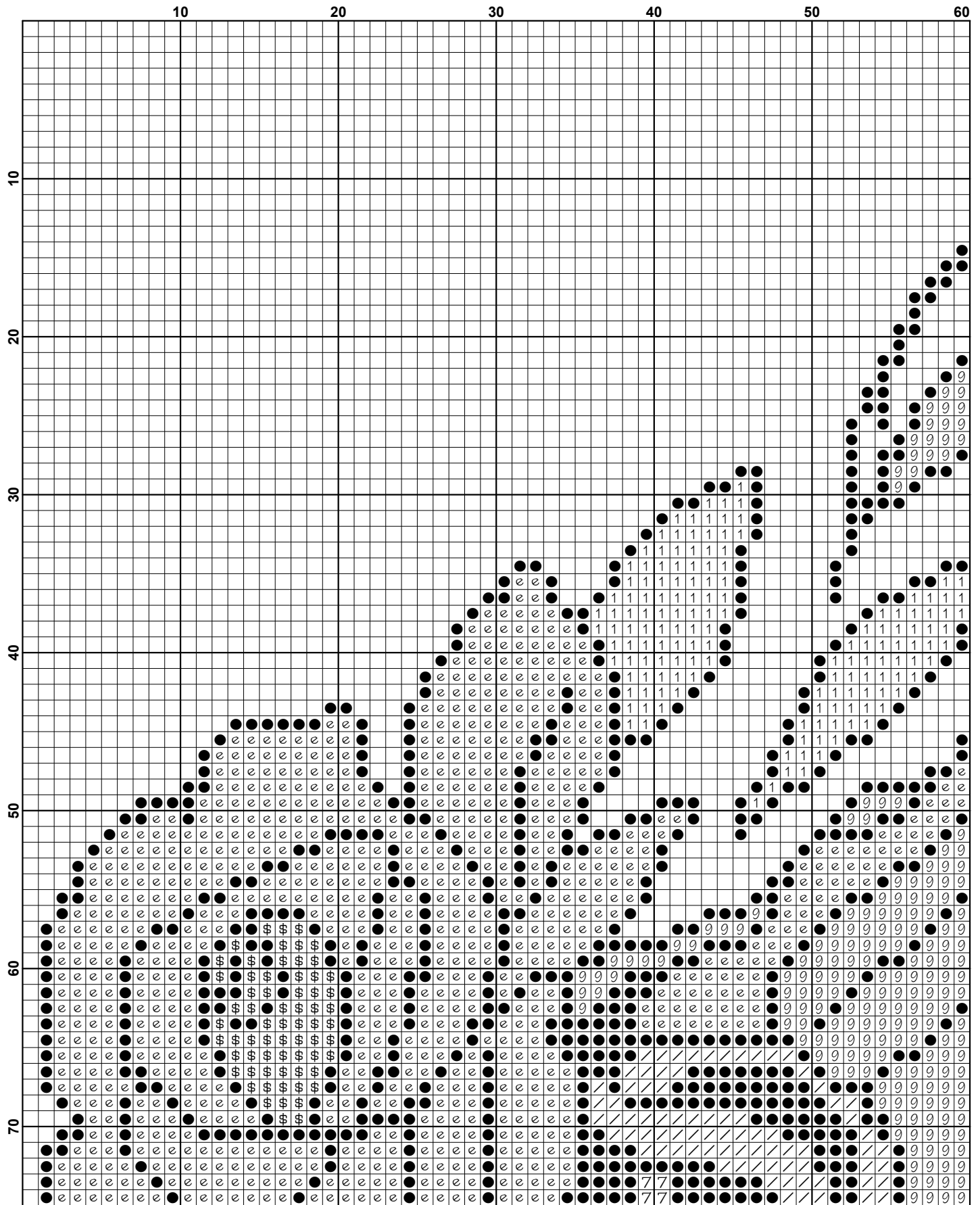
We hope you enjoy stitching our pattern.

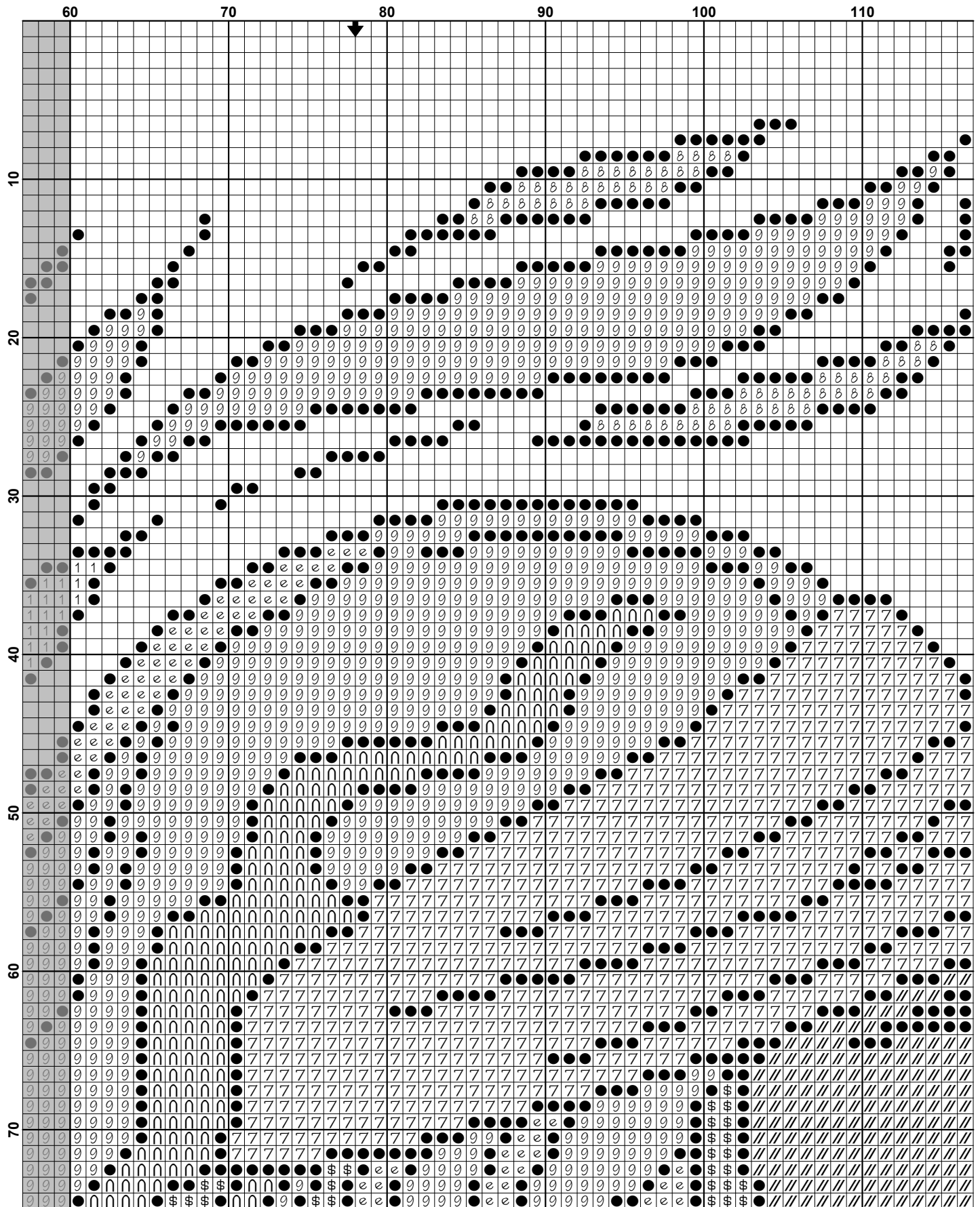
Thanks and Best Wishes  
Tereena Clarke

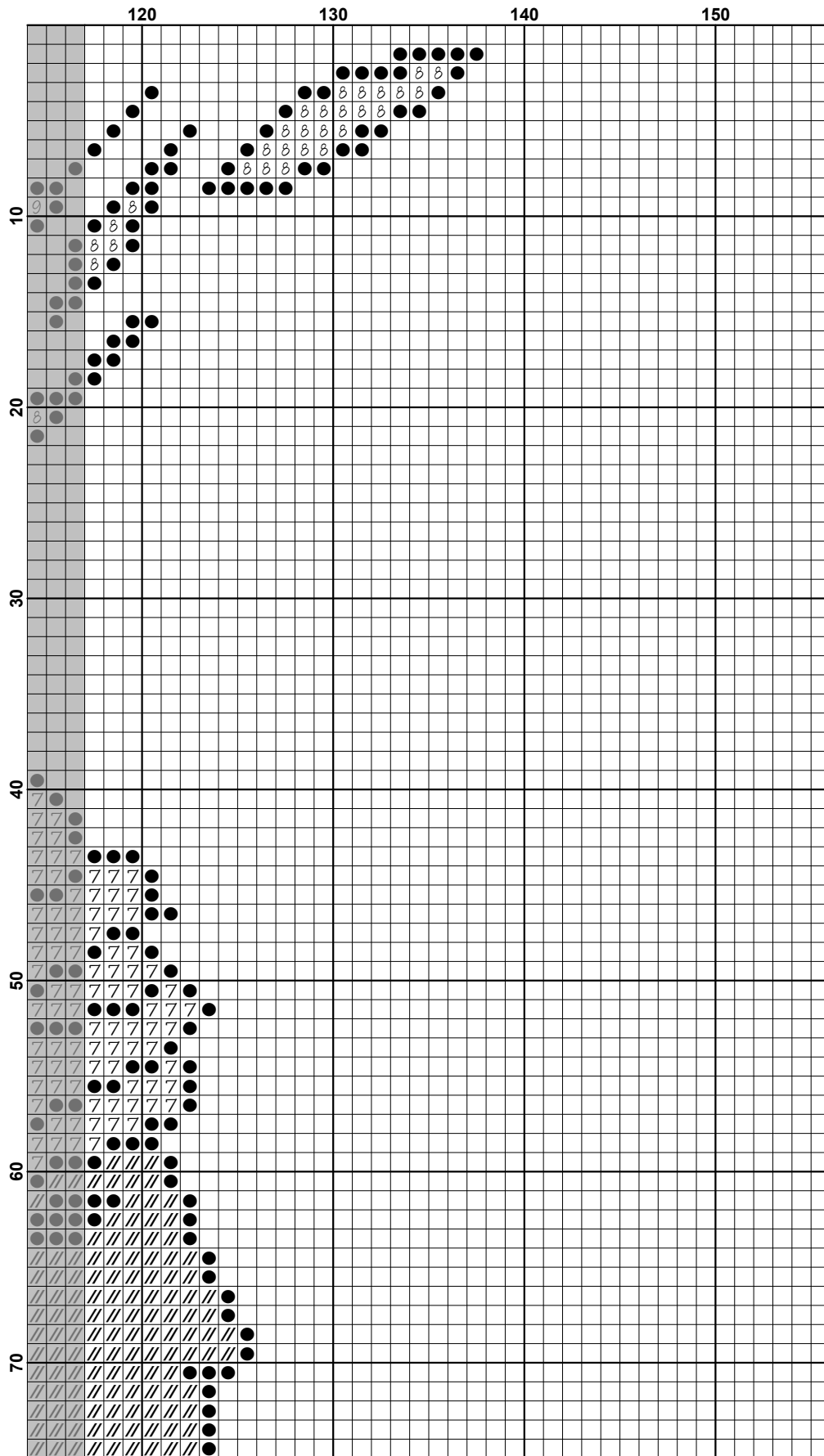
Artecy Cross Stitch  
Po Box 3474  
Tuggerah, NSW 2259  
Australia

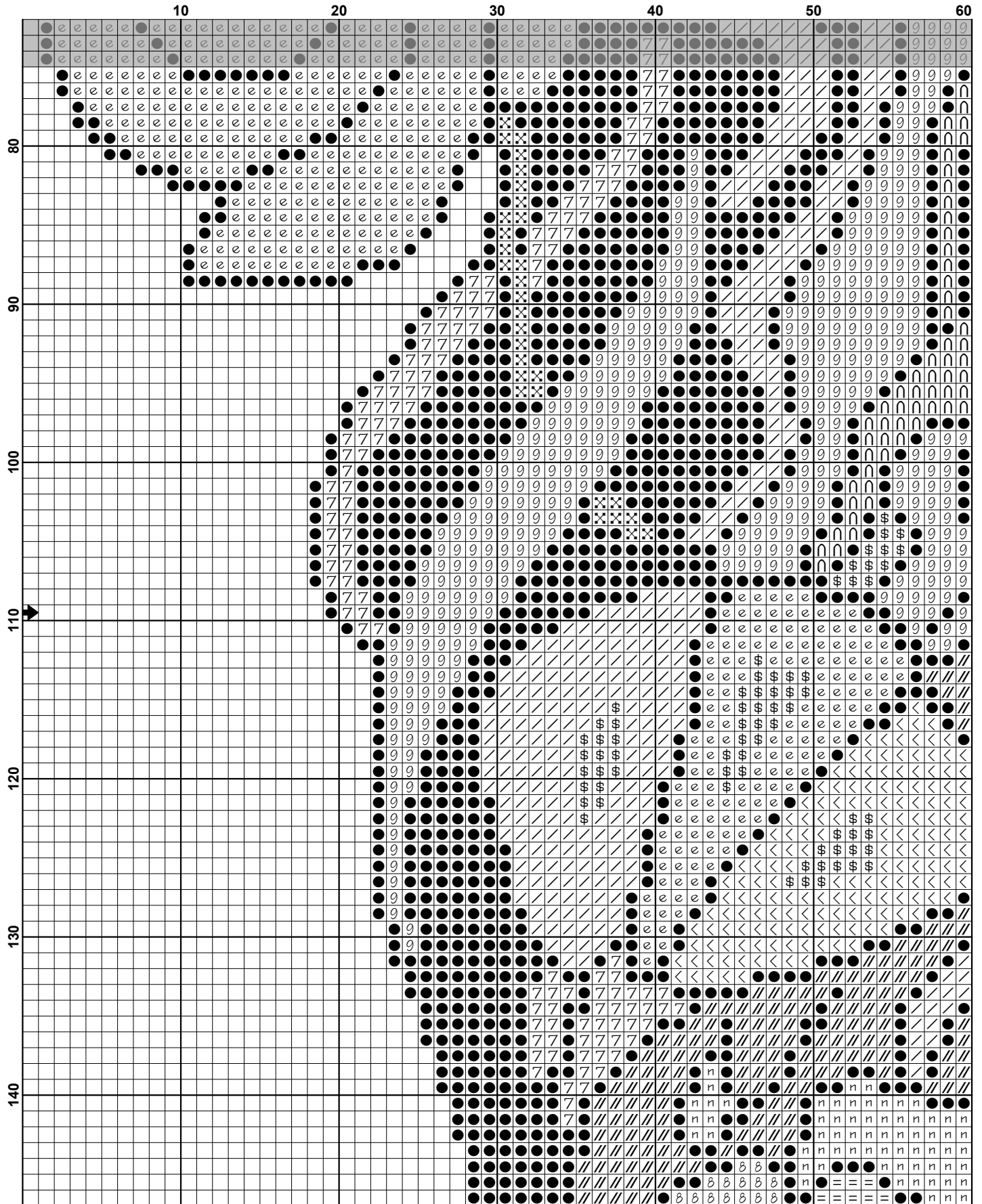
Website: [www.artecy.com](http://www.artecy.com)  
Email: [artecy@artecy.com](mailto:artecy@artecy.com) or [sls@comcen.com.au](mailto:sls@comcen.com.au)

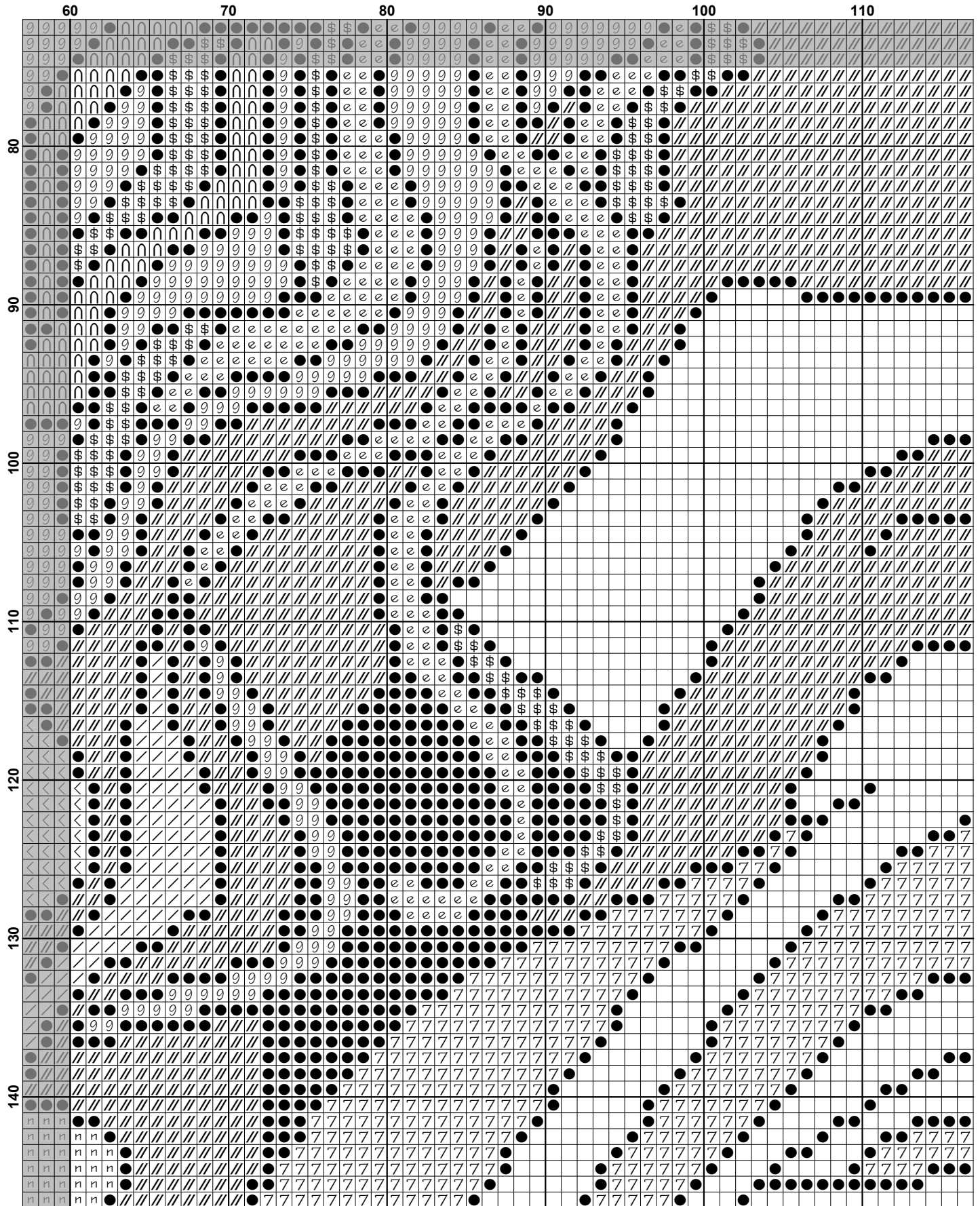
\*Patterns are strictly for personal use only. It is against our copyright to make kits for sale from our designs or to sell, copy or redistribute this pattern in any form. You may not upload our patterns to any internet forums or groups or any other website. You may make 1 copy of this pattern for a working copy for your own personal use if needed.

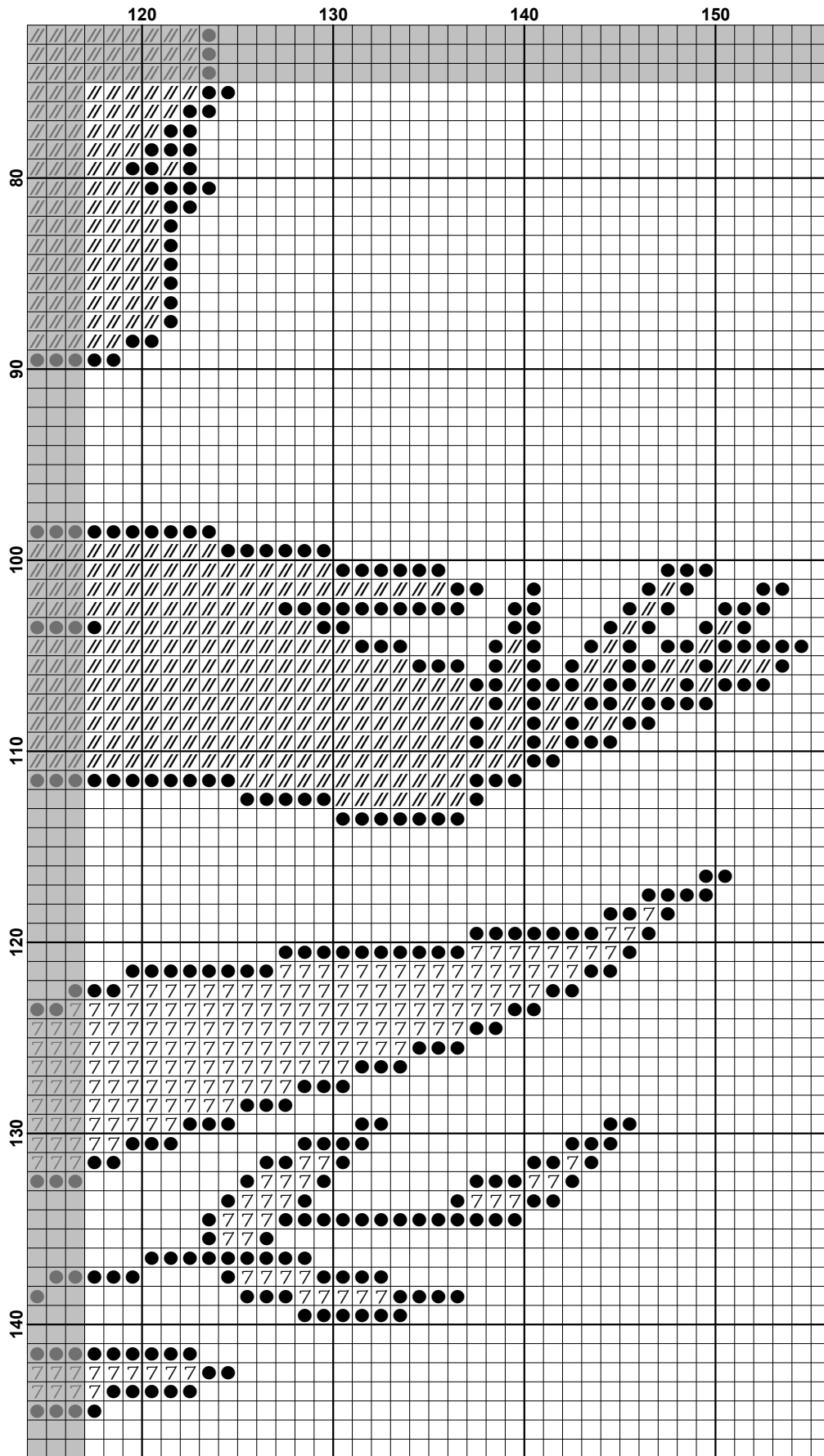




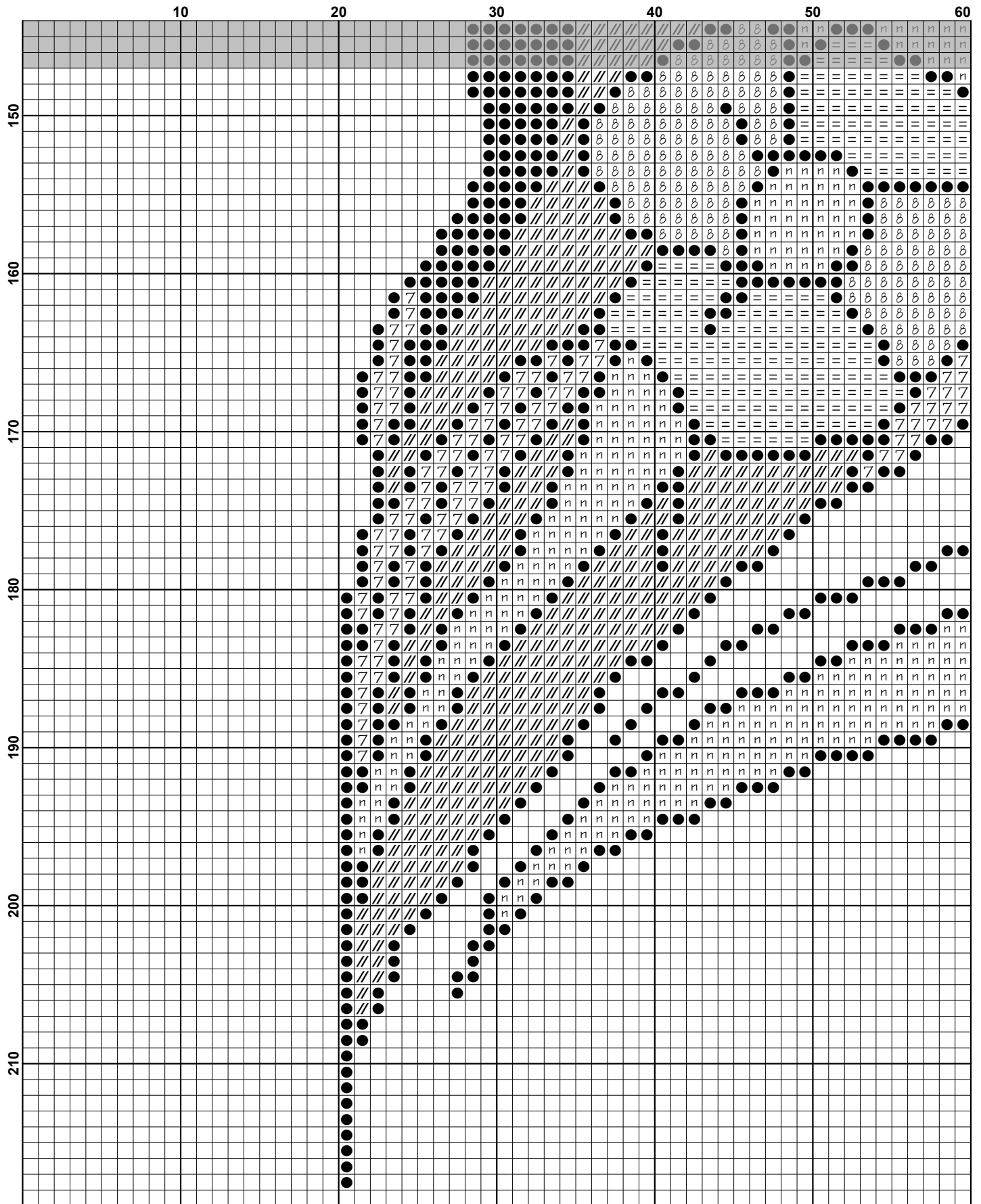


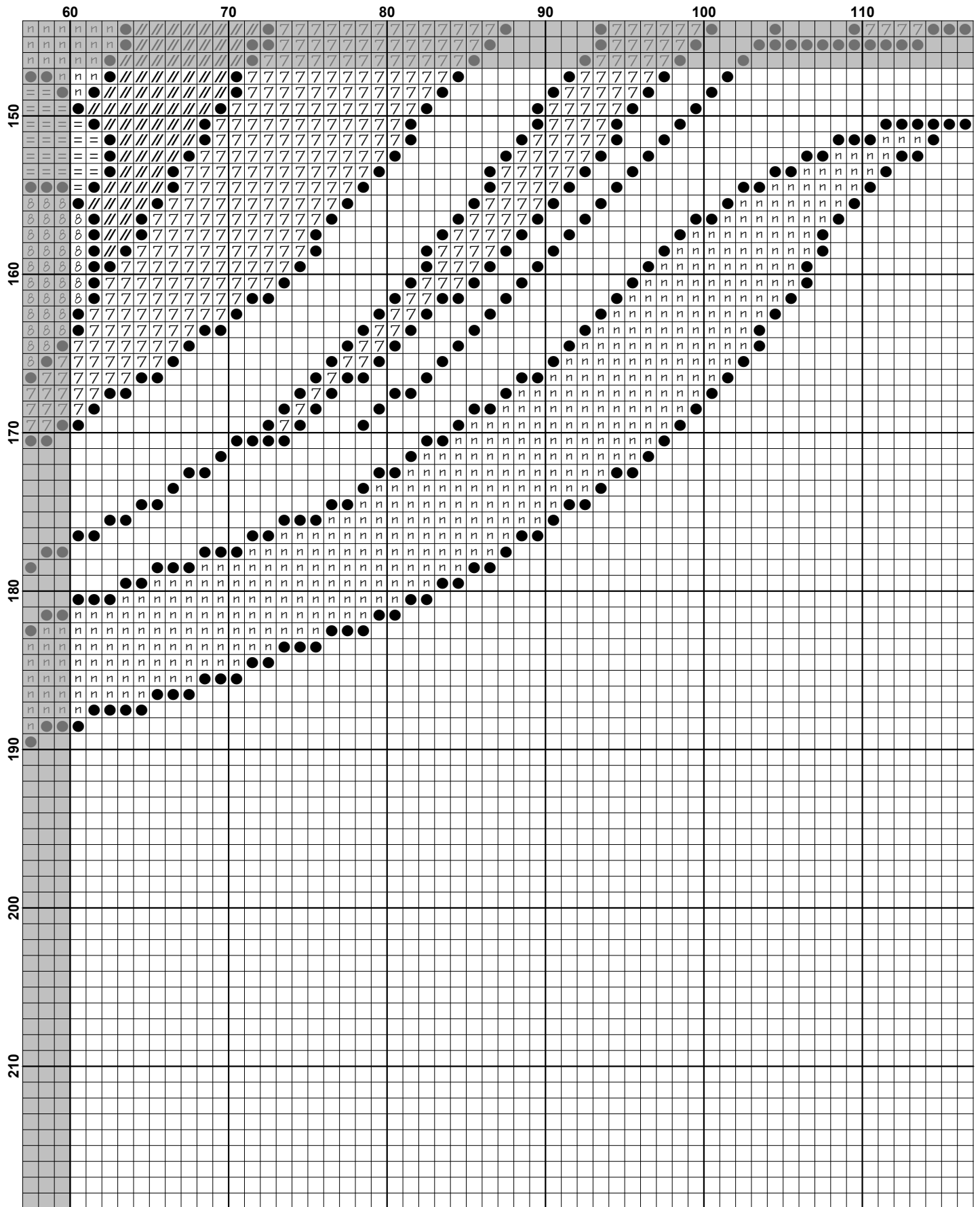


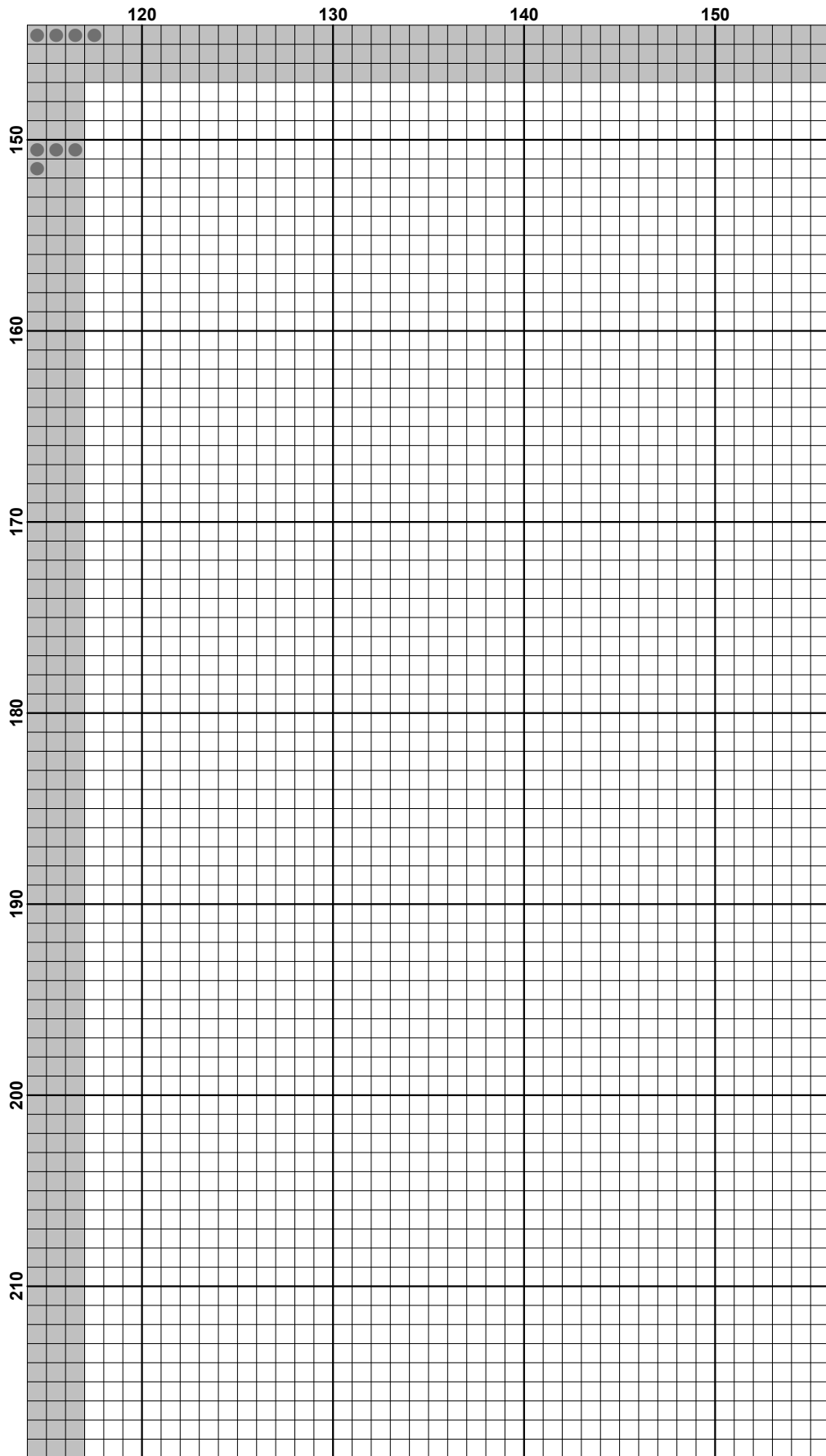


























**Pattern Name:** Deco Lady  
**Designed By:** Artecy Cross Stitch  
**Company:** Artecy Cross Stitch  
**Copyright:** Copyright Artecy Cross Stitch. All rights Reserved.  
**Fabric:** Aida 14, White  
 154w X 217h Stitches  
**Size(s):** 14 Count, 11w X 15-1/2h in  
 16 Count, 9-5/8w X 13-1/2h in  
 18 Count, 8-1/2w X 12h in

**Floss Used for Full Stitches:**

Symbol	Strands	Type	Number	Color
	<	2	DMC 209	Lavender-DK
	\$	2	DMC 210	Lavender-MD
	●	2	DMC 310	Black
	8	2	DMC 341	Blue Violet-LT
	9	2	DMC 601	Cranberry-DK
	=	2	DMC 794	Cornflower Blue-LT
	∩	2	DMC 893	Carnation-LT
	/	2	DMC 3746	Blue Violet-DK
	1	2	DMC 3805	Cyclamen Pink
	e	2	DMC 3806	Cyclamen Pink-LT
	X	2	DMC 3809	Turquoise-VY DK
	n	2	DMC 3843	Electric Blue
	7	2	DMC 3846	Bright Turquoise-LT
	//	2	DMC 3865	Winter White

**Notes:**

The middle of this pattern can be found on page 5 and is 78 stitches across and 110 stitches down.

Pattern layout using page numbers in top left.

1 2 3  
 4 5 6  
 7 8 9

**Usage Summary**

**Strands Per Skein:** 6

**Skein Length:** 313.0 in

Type	Number	Full	Half	Quarter	Petite	Back(in)	Str(in)	Spec(in)	French	Bead	Skein Est.
DMC	209	174	0	0	0	0.0	0.0	0.0	0	0	1.000
DMC	210	324	0	0	0	0.0	0.0	0.0	0	0	1.000
DMC	310	4693	0	0	0	0.0	0.0	0.0	0	0	2.000
DMC	341	283	0	0	0	0.0	0.0	0.0	0	0	1.000
DMC	601	1772	0	0	0	0.0	0.0	0.0	0	0	1.000
DMC	794	218	0	0	0	0.0	0.0	0.0	0	0	1.000
DMC	893	321	0	0	0	0.0	0.0	0.0	0	0	1.000
DMC	3746	457	0	0	0	0.0	0.0	0.0	0	0	1.000
DMC	3805	156	0	0	0	0.0	0.0	0.0	0	0	1.000
DMC	3806	1540	0	0	0	0.0	0.0	0.0	0	0	1.000
DMC	3809	30	0	0	0	0.0	0.0	0.0	0	0	1.000
DMC	3843	774	0	0	0	0.0	0.0	0.0	0	0	1.000
DMC	3846	1931	0	0	0	0.0	0.0	0.0	0	0	1.000
DMC	3865	2219	0	0	0	0.0	0.0	0.0	0	0	1.000