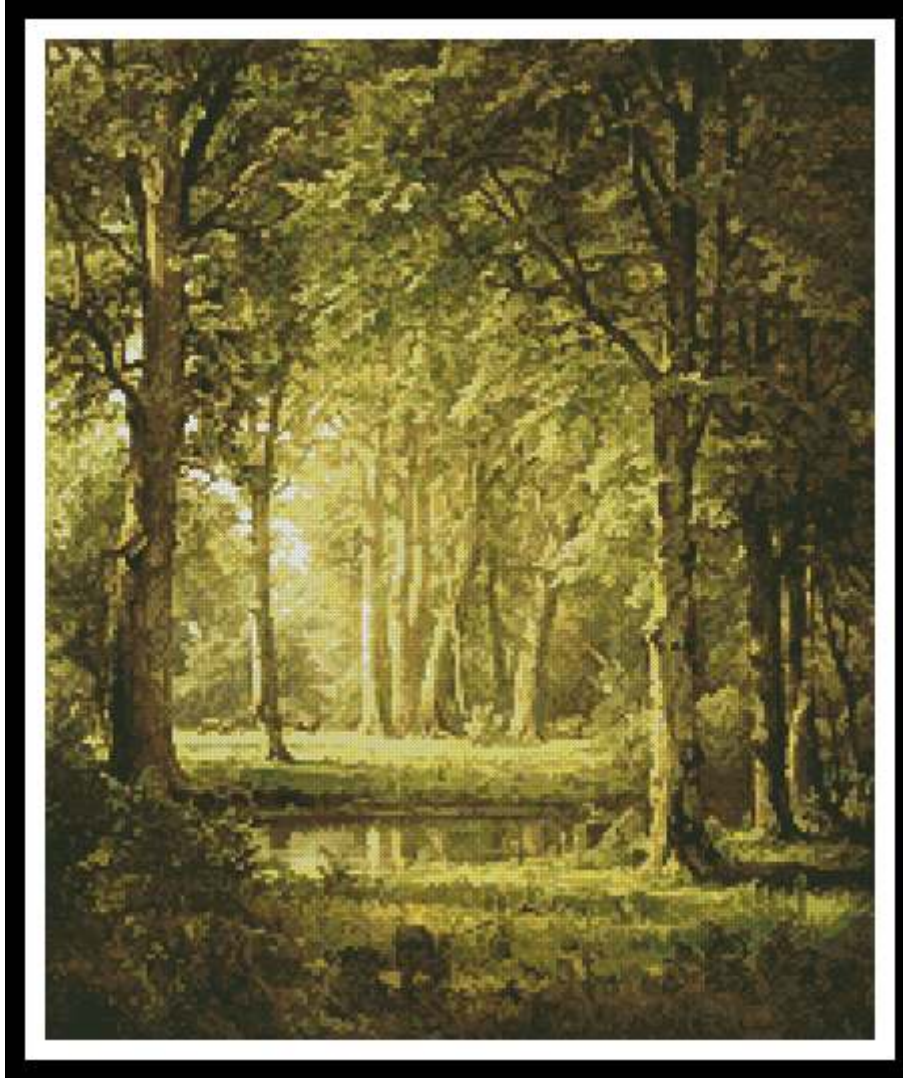


# Artecy

## CROSS STITCH

### Early Summer

Adapted from Artwork by William Trost Richards



\* Original image courtesy of The Athenaeum. <http://www.the-athenaeum.org>  
Cross Stitch Design by Tereena Clarke.

Completed Size = 196w x 237h Stitches

14 Count, 14w x 17h inches (36cm x 43cm)

16 Count, 12.5w x 15h inches (32cm x 38cm)

18 Count, 11w x 13.5h inches (28cm x 34cm)

Uses 29 DMC cotton colours. Only full cross stitches are used in this pattern.

# *Pattern Instructions*

\* This pattern can be worked on any fabric type, colour or count you prefer. To work out the size of the finished article, take the number of stitches wide and high and divide it by the count of your fabric (e.g. 14,16,18 count aida etc) to get the size in inches. Times it by 2.54 to get centimetres. We have the sizes in inches shown on the previous page. Also leave at least a few inches of fabric around each side of the design to assist in framing. The higher the fabric count the smaller the completed project will be.

\* To put the pattern together look in the top and bottom corners. The page numbers in brackets show which page number it joins up to. Page 1 always starts at the top left hand side of the pattern. Our pages also have a shaded grey section. This indicates a 3 row overlap from adjoining pages to assist with reading the pattern. PLEASE DO NOT RESTITCH THIS AREA.

\* You should begin at the centre of the pattern. To find the centre of the pattern it is just a matter of laying the pattern out and locating the arrows at the top and left hand side of the patterns, they are determined by dividing the stitch numbers wide and high in half. Where the two points meet in the middle, that is the centre.

\* If you need more assistance to find the middle of your pattern or the page layout, please see the notes section on the colour symbol chart. The easiest way to stitch this pattern, as it has multiple pages, is to stitch one page at a time.

\* We suggest using two strands of floss for each stitch and one strand for backstitching if the pattern calls for it.

We hope you enjoy stitching our pattern.

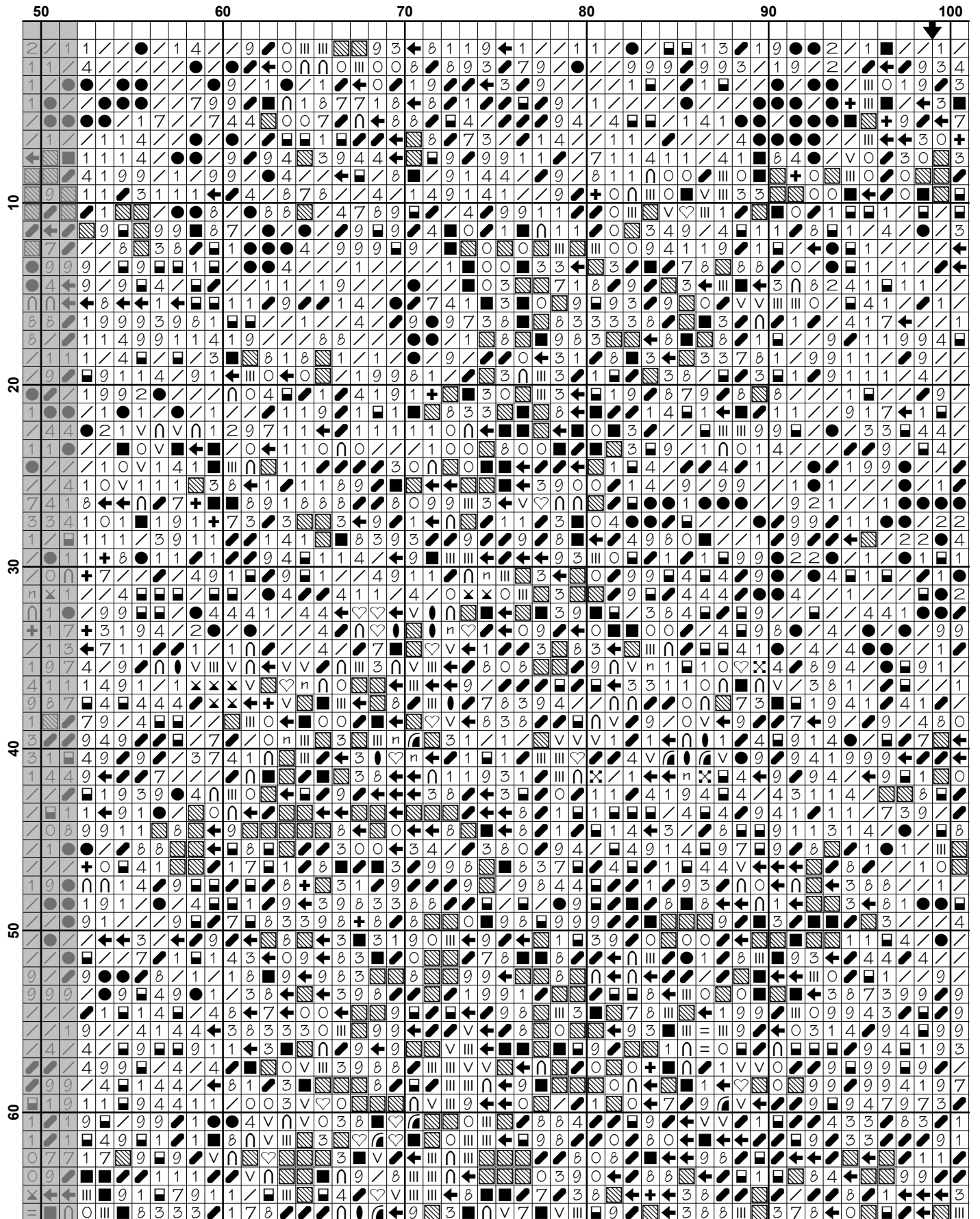
Thanks and Best Wishes  
Tereena Clarke

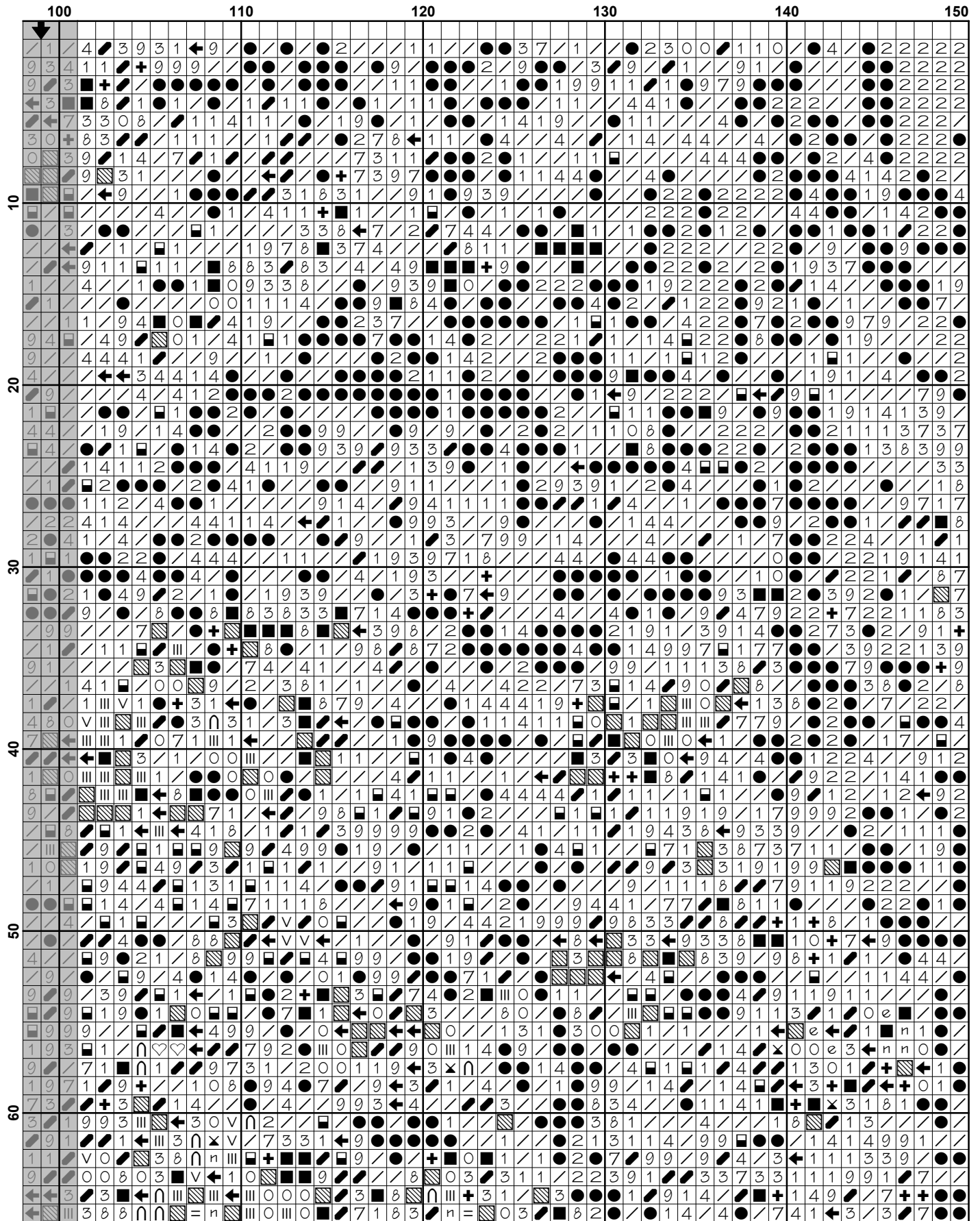
Artecy Cross Stitch  
Po Box 3474  
Tuggerah, NSW 2259  
Australia

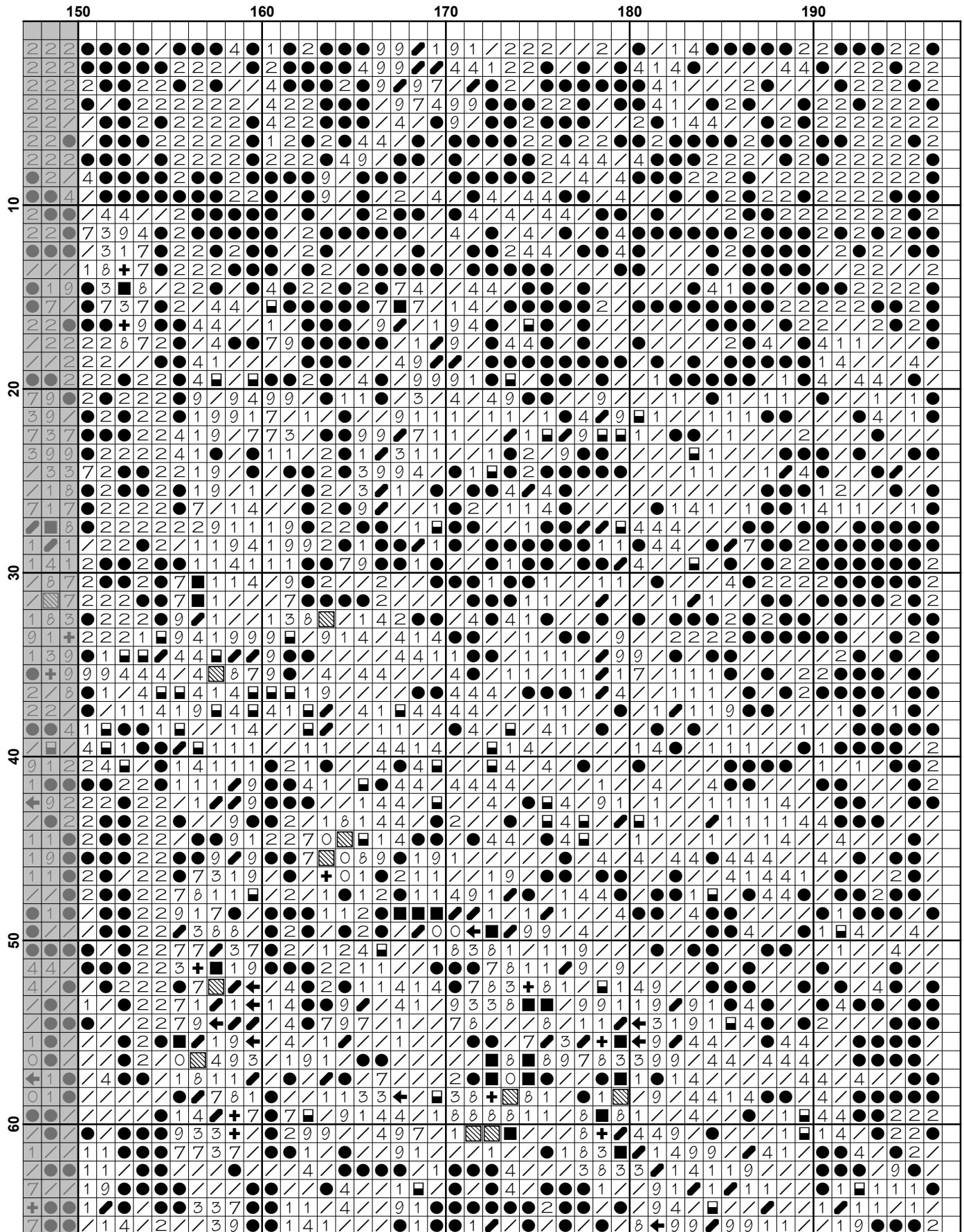
Websites: [www.artecy.com](http://www.artecy.com) and [www.artecyshop.com](http://www.artecyshop.com)  
Email: [artecy@artecy.com](mailto:artecy@artecy.com) or [stitch@artecyshop.com](mailto:stitch@artecyshop.com)

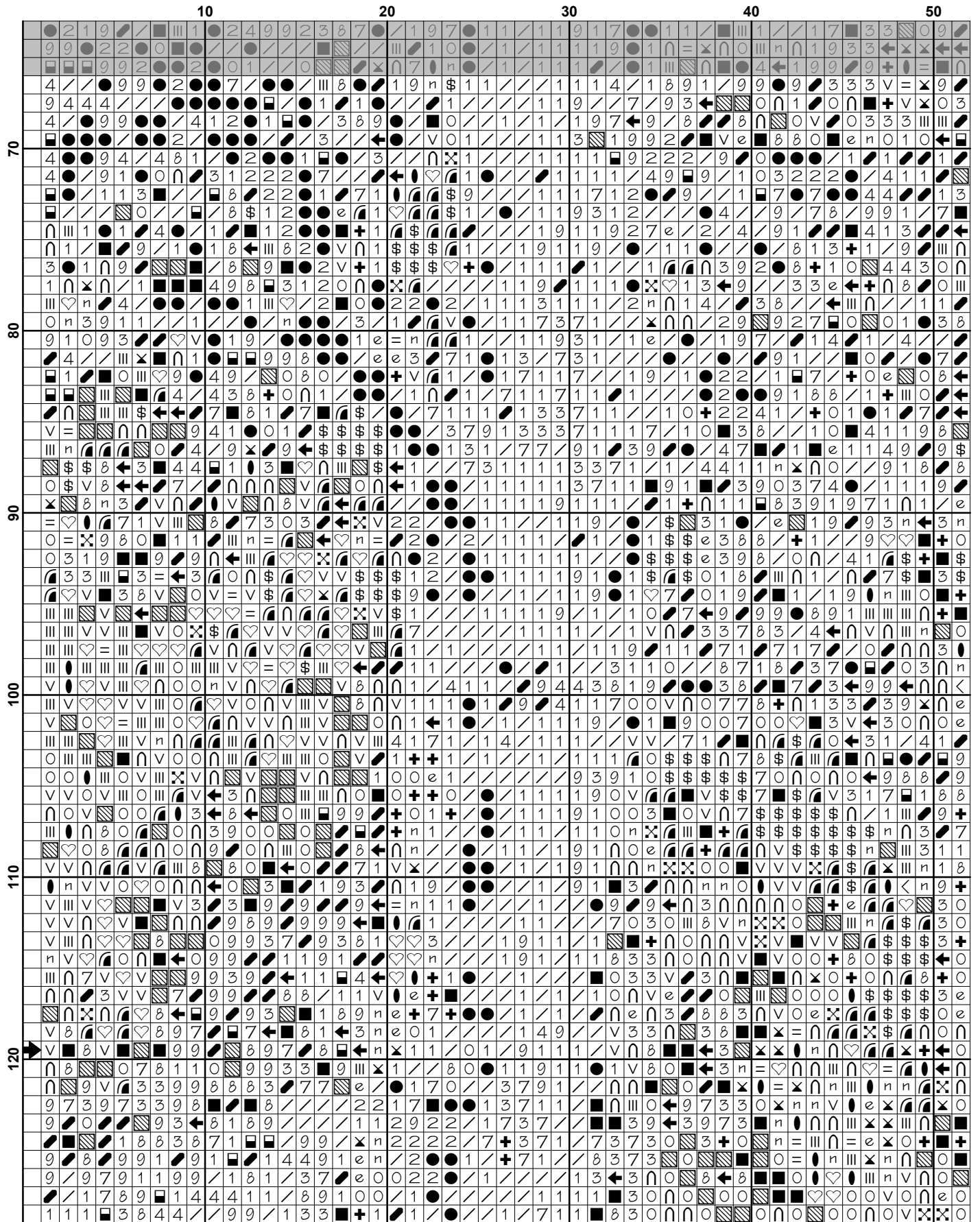
\*Patterns are strictly for personal use only. It is against our copyright to make kits for sale from our designs or to sell, copy or redistribute this pattern in any form. You may not upload our patterns to any internet forums or groups or any other website. You may make 1 copy of this pattern for a working copy for your own personal use if needed.



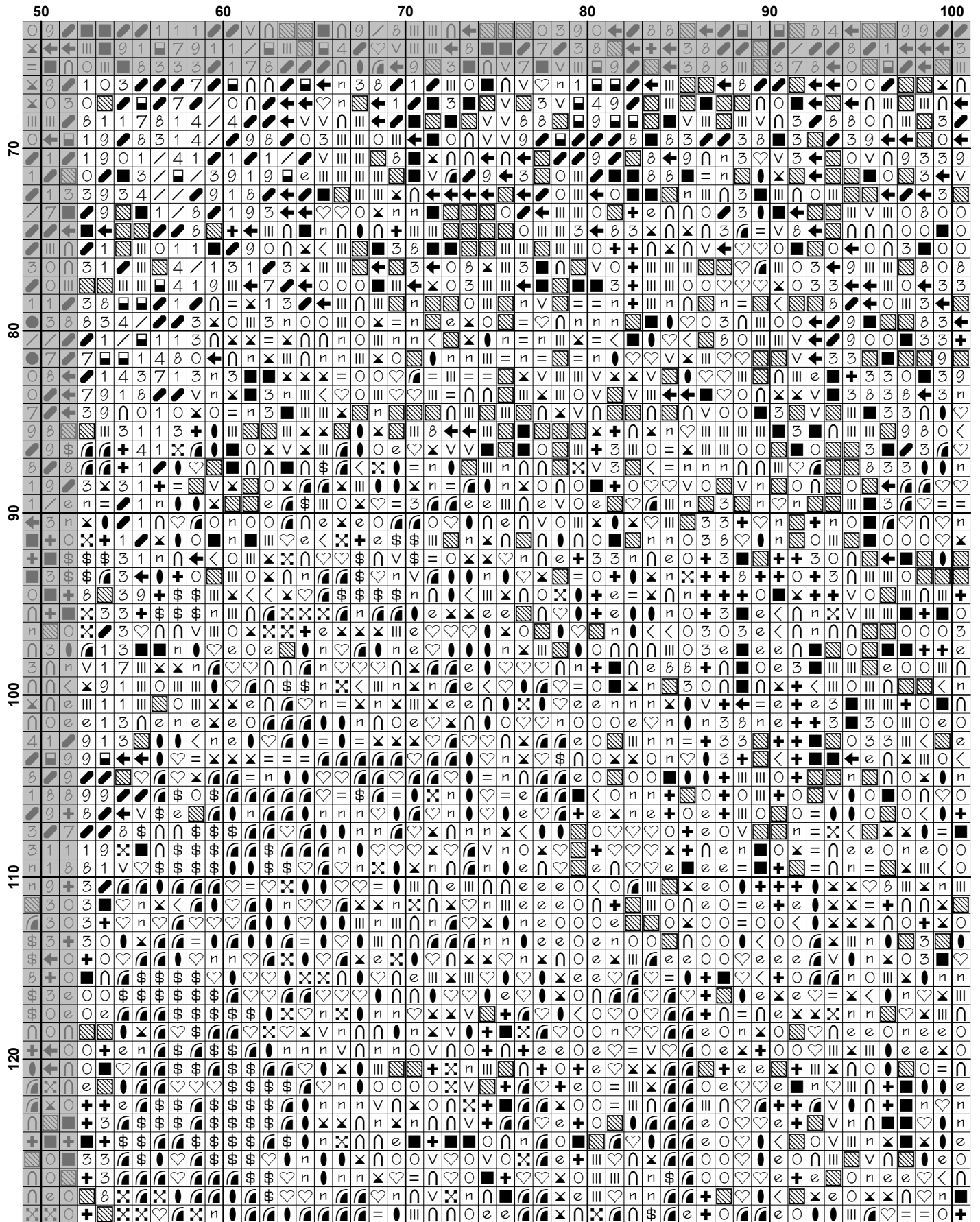




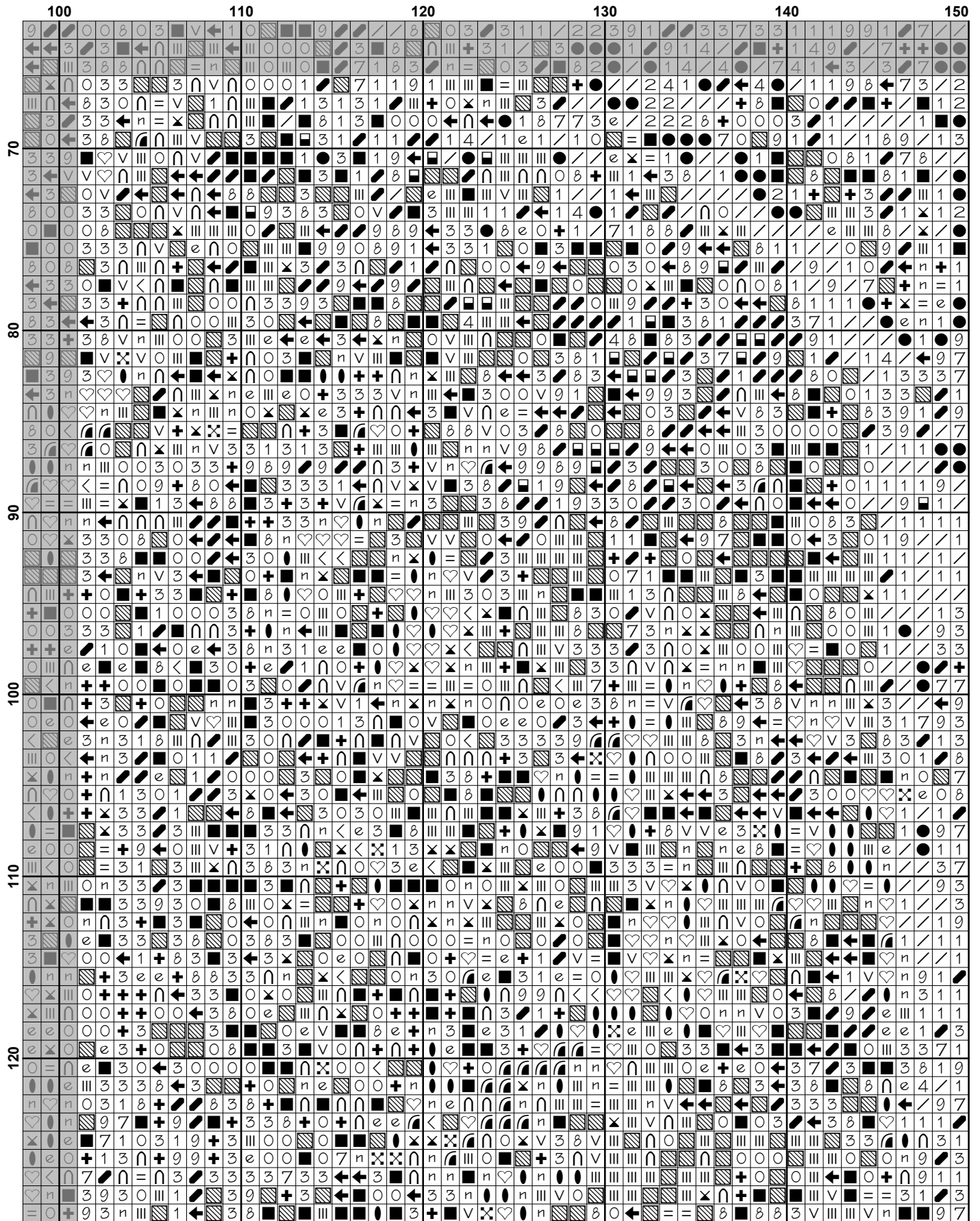


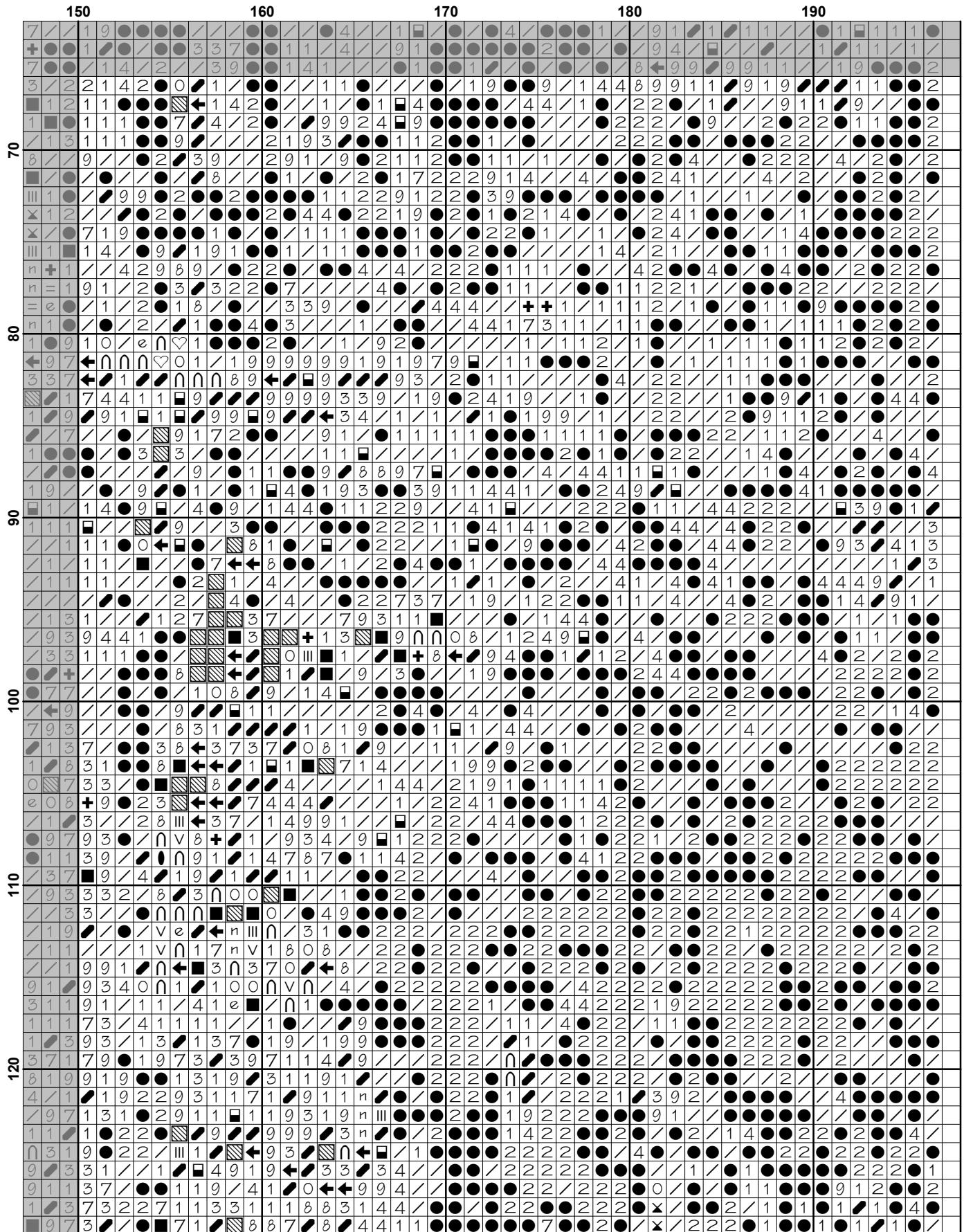


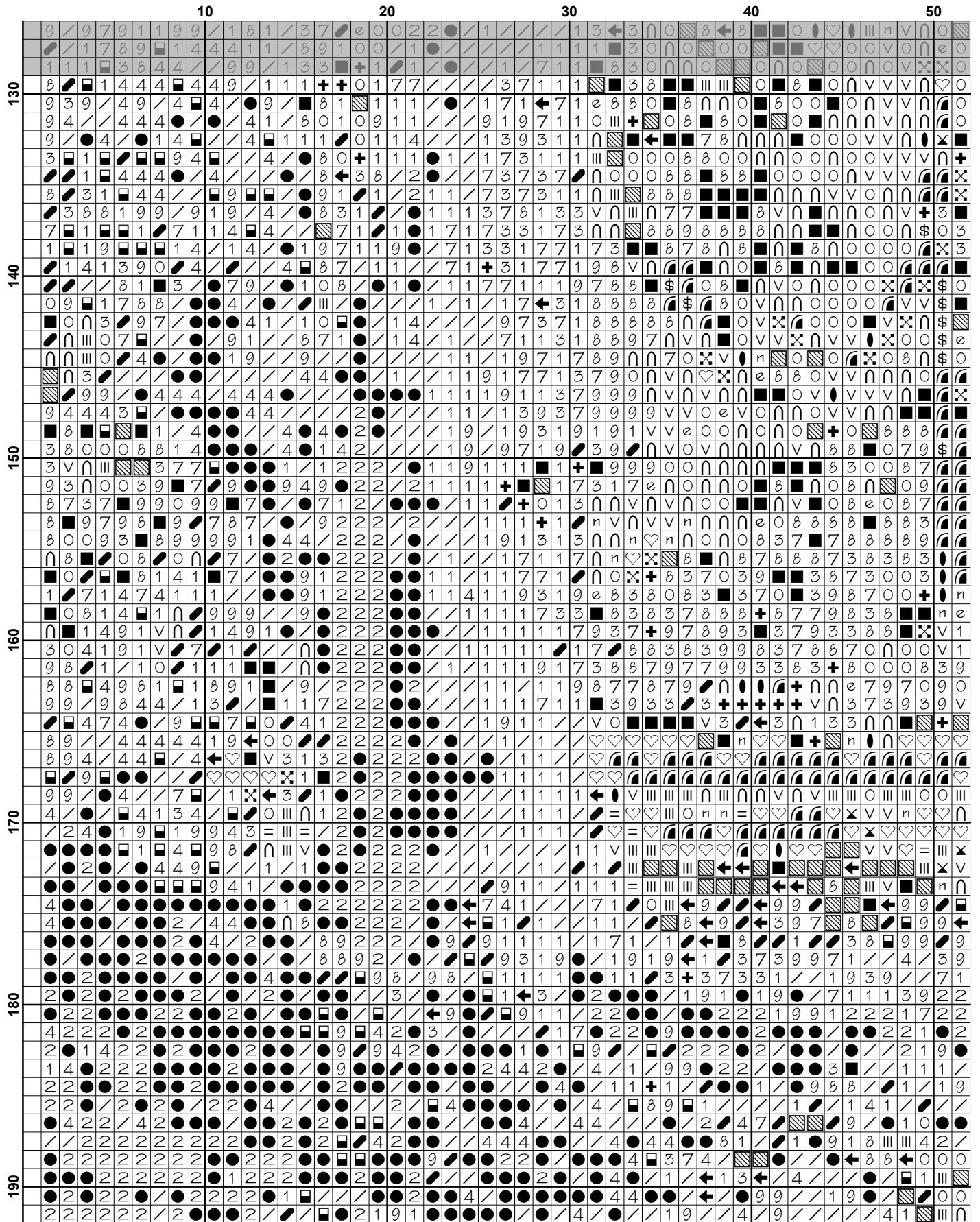


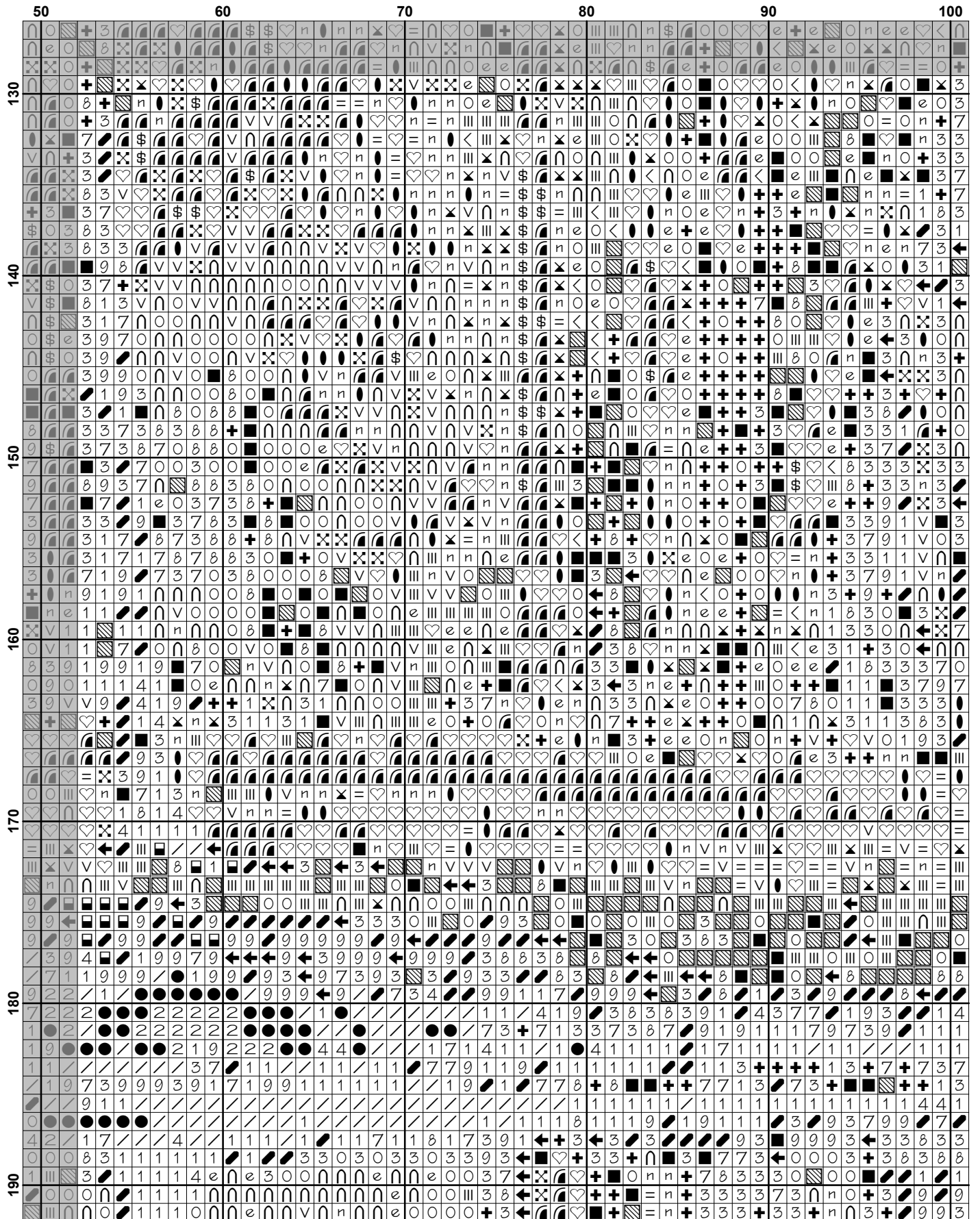


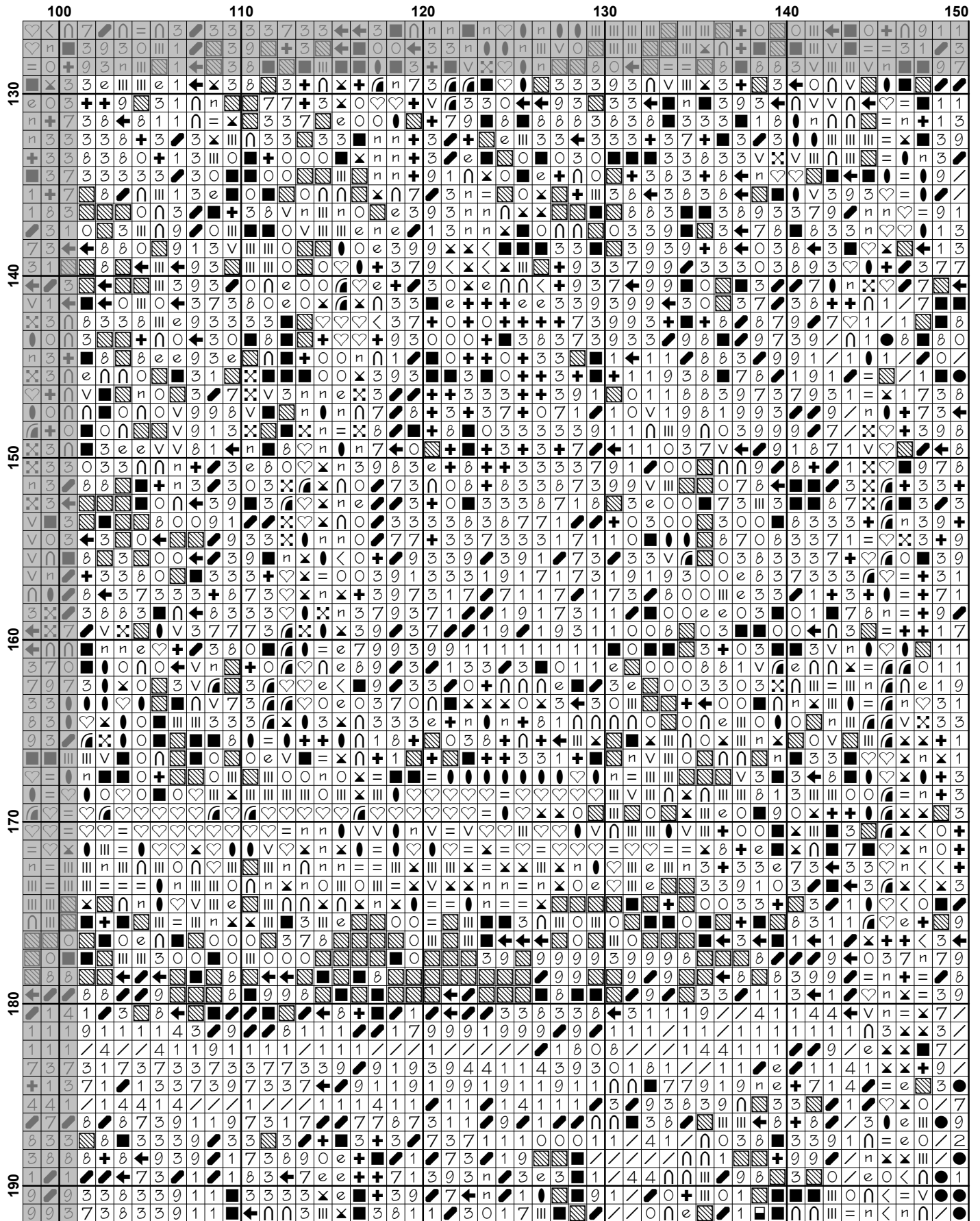








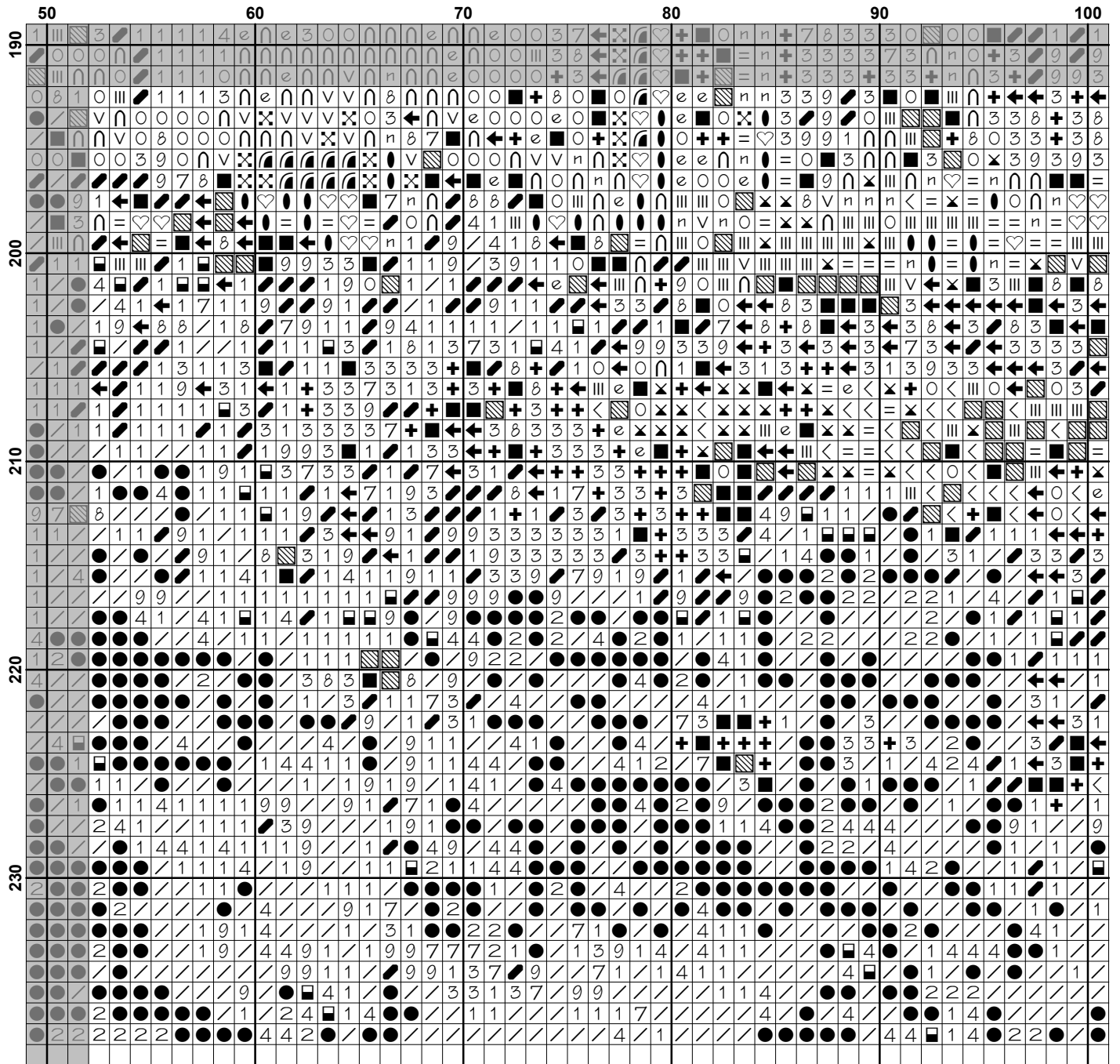


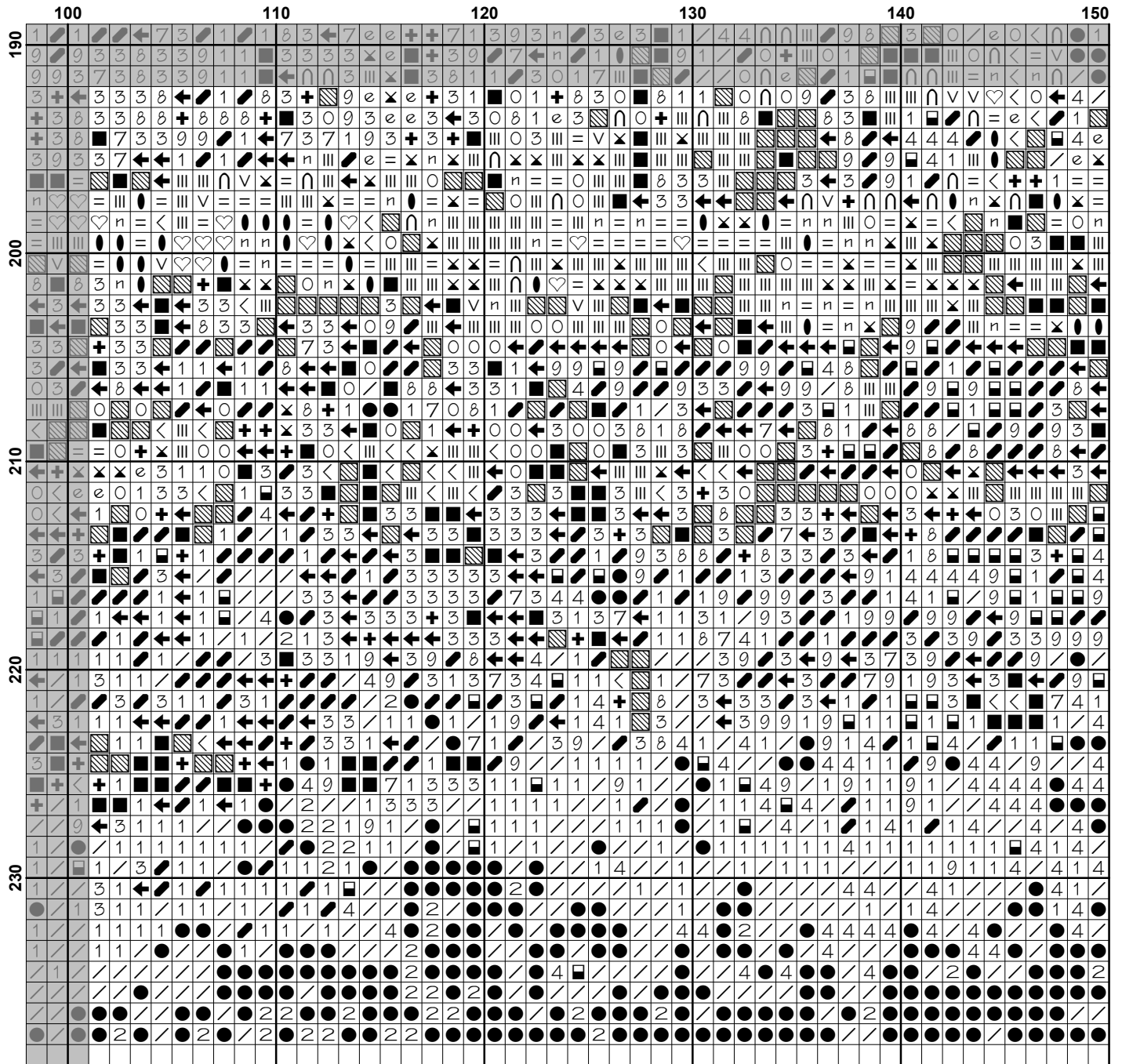
















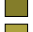






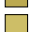










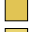











**Pattern Name:** Early Summer  
**Designed By:** Painting by William Trost Richards  
**Company:** Artecy Cross Stitch  
**Copyright:** Copyright Artecy Cross Stitch. All rights Reserved.  
**Fabric:** Aida 14, White  
 196w X 237h Stitches  
**Size(s):** 14 Count, 14w X 16-7/8h in  
 16 Count, 12-1/4w X 14-3/4h in  
 18 Count, 10-7/8w X 13-1/8h in

**Floss Used for Full Stitches:**

Symbol	Strands	Type	Number	Color
	V	2	DMC 165	Moss Green-VY LT
	2	2	DMC 310	Black
	♡	2	DMC 445	Lemon-LT
	+	2	DMC 680	Old Gold-DK
	=	2	DMC 726	Topaz-LT
	e	2	DMC 729	Old Gold-MD
		2	DMC 730	Olive Green-VY DK
	←	2	DMC 732	Olive Green
		2	DMC 733	Olive Green-MD
	●	2	DMC 744	Yellow-Pale
	1	2	DMC 801	Coffee Brown-DK
	3	2	DMC 831	Golden Olive-MD
	■	2	DMC 832	Golden Olive
	o	2	DMC 833	Golden Olive-LT
	∩	2	DMC 834	Golden Olive-VY LT
	■	2	DMC 936	Avocado Green-VY DK
	/	2	DMC 938	Coffee Brown-UL DK
	9	2	DMC 3011	Khaki Green-DK
	8	2	DMC 3012	Khaki Green-MD
	4	2	DMC 3031	Mocha Brown-VY DK
		2	DMC 3078	Golden Yellow-VY LT
	●	2	DMC 3371	Black Brown
		2	DMC 3819	Moss Green-LT
	<	2	DMC 3820	Straw-DK
	x	2	DMC 3821	Straw
	n	2	DMC 3822	Straw-LT
	✕	2	DMC 3855	Autumn Gold-LT
	7	2	DMC 3862	Mocha Beige-DK
	\$	2	DMC White	White

**Notes:**

The middle of this pattern can be found on page 6 and is 99 stitches across and 120 stitches down.

Pattern layout using page numbers in top left.

1 2 3 4  
 5 6 7 8  
 9 10 11 12  
 13 14 15 16

**Usage Summary**

**Strands Per Skein:** 6

**Skein Length:** 313.0 in

Type	Number	Full	Half	Quarter	Petite	Back(in)	Str(in)	Spec(in)	French	Bead	Skein Est.
■ DMC	165	614	0	0	0	0.0	0.0	0.0	0	0	1.000
■ DMC	310	2587	0	0	0	0.0	0.0	0.0	0	0	2.000
■ DMC	445	859	0	0	0	0.0	0.0	0.0	0	0	1.000
■ DMC	680	924	0	0	0	0.0	0.0	0.0	0	0	1.000
■ DMC	726	374	0	0	0	0.0	0.0	0.0	0	0	1.000
■ DMC	729	478	0	0	0	0.0	0.0	0.0	0	0	1.000
■ DMC	730	2420	0	0	0	0.0	0.0	0.0	0	0	2.000
■ DMC	732	1142	0	0	0	0.0	0.0	0.0	0	0	1.000
■ DMC	733	1896	0	0	0	0.0	0.0	0.0	0	0	1.000
■ DMC	744	558	0	0	0	0.0	0.0	0.0	0	0	1.000
■ DMC	801	4739	0	0	0	0.0	0.0	0.0	0	0	3.000
■ DMC	831	2383	0	0	0	0.0	0.0	0.0	0	0	2.000
■ DMC	832	1475	0	0	0	0.0	0.0	0.0	0	0	1.000
■ DMC	833	1843	0	0	0	0.0	0.0	0.0	0	0	1.000
■ DMC	834	1190	0	0	0	0.0	0.0	0.0	0	0	1.000
■ DMC	936	838	0	0	0	0.0	0.0	0.0	0	0	1.000
■ DMC	938	6262	0	0	0	0.0	0.0	0.0	0	0	3.000
■ DMC	3011	2210	0	0	0	0.0	0.0	0.0	0	0	1.000
■ DMC	3012	1278	0	0	0	0.0	0.0	0.0	0	0	1.000
■ DMC	3031	1631	0	0	0	0.0	0.0	0.0	0	0	1.000
■ DMC	3078	780	0	0	0	0.0	0.0	0.0	0	0	1.000
■ DMC	3371	5933	0	0	0	0.0	0.0	0.0	0	0	3.000
■ DMC	3819	1148	0	0	0	0.0	0.0	0.0	0	0	1.000
■ DMC	3820	161	0	0	0	0.0	0.0	0.0	0	0	1.000
■ DMC	3821	630	0	0	0	0.0	0.0	0.0	0	0	1.000
■ DMC	3822	710	0	0	0	0.0	0.0	0.0	0	0	1.000
■ DMC	3855	206	0	0	0	0.0	0.0	0.0	0	0	1.000
■ DMC	3862	952	0	0	0	0.0	0.0	0.0	0	0	1.000
□ DMC	White	231	0	0	0	0.0	0.0	0.0	0	0	1.000