

Eilean Donan Castle



* Original image Copyright of Barni1 - Pixabay. Cross Stitch Design by Tereena Clarke.

Completed Size = 350w X 205h Stitches

14 Count, 25w X 15h inches

16 Count, 22w X 13h inches

18 Count, 19.5w X 11.5h inches

Uses 58 DMC cotton colours. Only full cross stitches are used in this pattern.

Pattern Instructions

* This pattern can be worked on any fabric type, colour or count you prefer. To work out the size of the finished article, take the number of stitches wide and high and divide it by the count of your fabric (e.g. 14,16,18 count aida etc) to get the size in inches. Times it by 2.54 to get centimetres. We have the sizes in inches shown on the previous page. Also leave at least a few inches of fabric around each side of the design to assist in framing. The higher the fabric count the smaller the completed project will be.

* To put the pattern together look in the top and bottom corners. The page numbers in brackets show which page number it joins up to. Page 1 always starts at the top left hand side of the pattern. Our pages also have a shaded grey section. This indicates a 3 row overlap from adjoining pages to assist with reading the pattern. PLEASE DO NOT RESTITCH THIS AREA.

* You should begin at the centre of the pattern. To find the centre of the pattern it is just a matter of laying the pattern out and locating the arrows at the top and left hand side of the patterns, they are determined by dividing the stitch numbers wide and high in half. Where the two points meet in the middle, that is the centre.

* If you need more assistance to find the middle of your pattern or the page layout, please see the notes section on the colour symbol chart. The easiest way to stitch this pattern, as it has multiple pages, is to stitch one page at a time.

* We suggest using two strands of floss for each stitch and one strand for backstitching if the pattern calls for it.

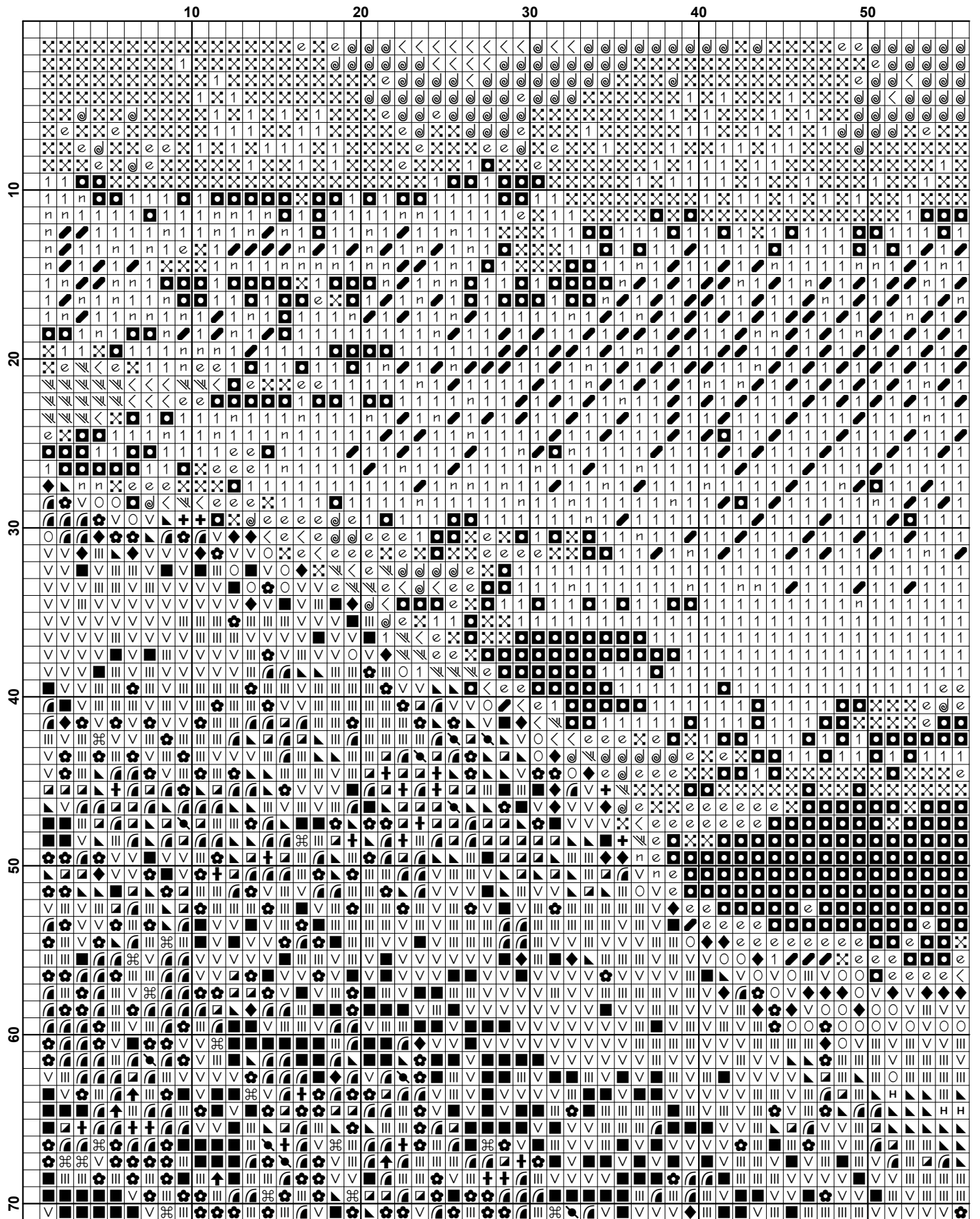
We hope you enjoy stitching our pattern.

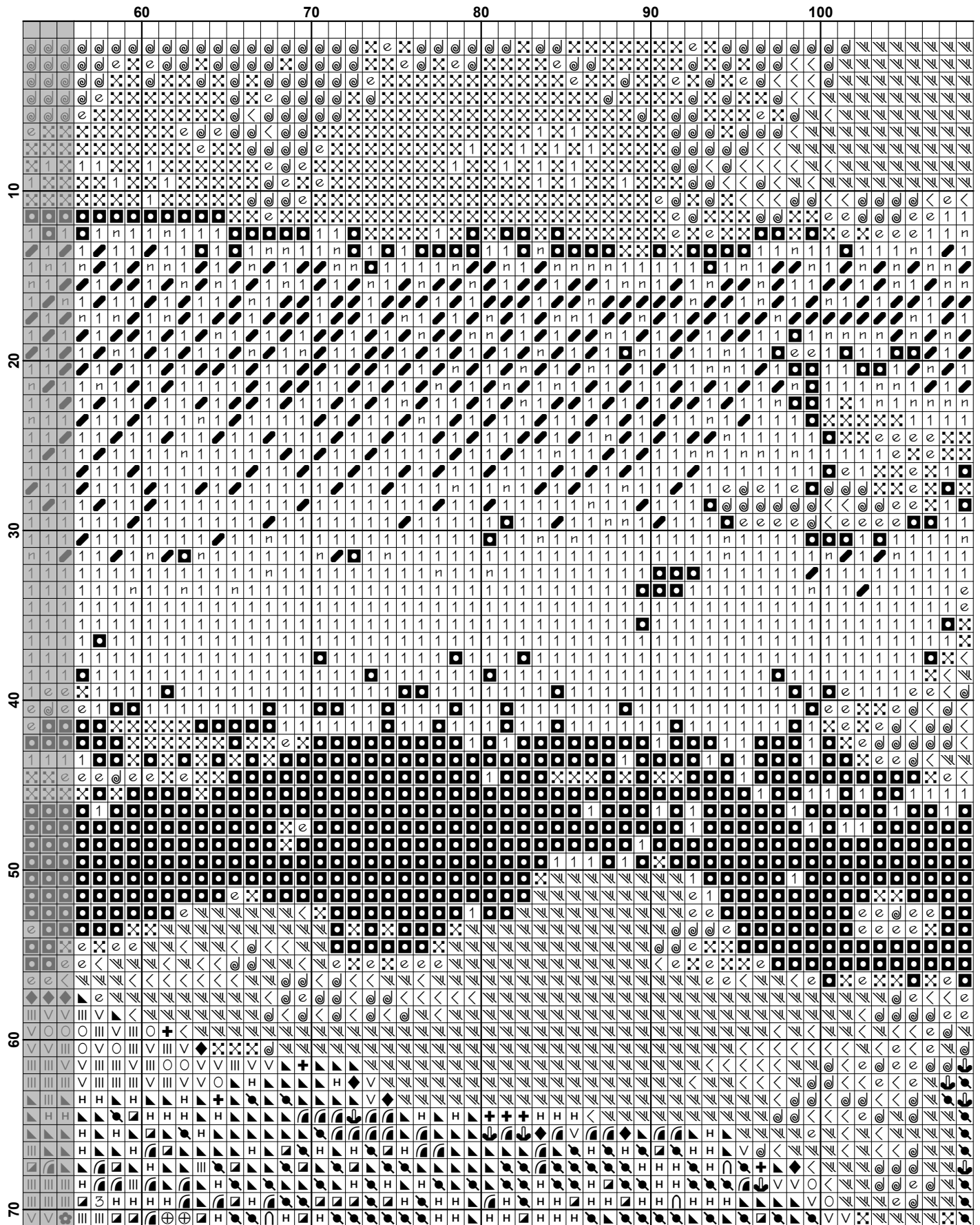
Thanks and Best Wishes
Tereena Clarke

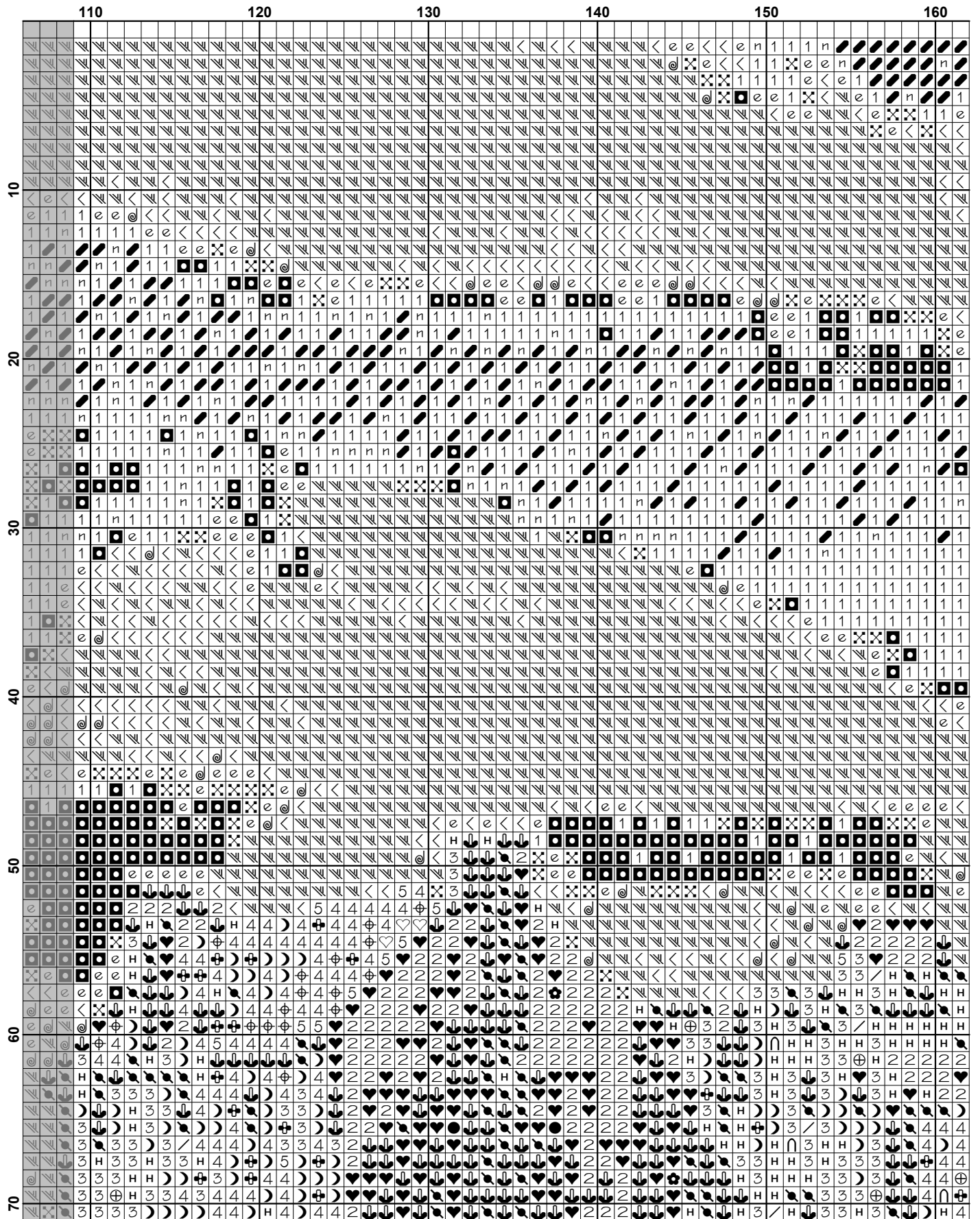
Artecy Cross Stitch
Po Box 3474
Tuggerah, NSW 2259
Australia

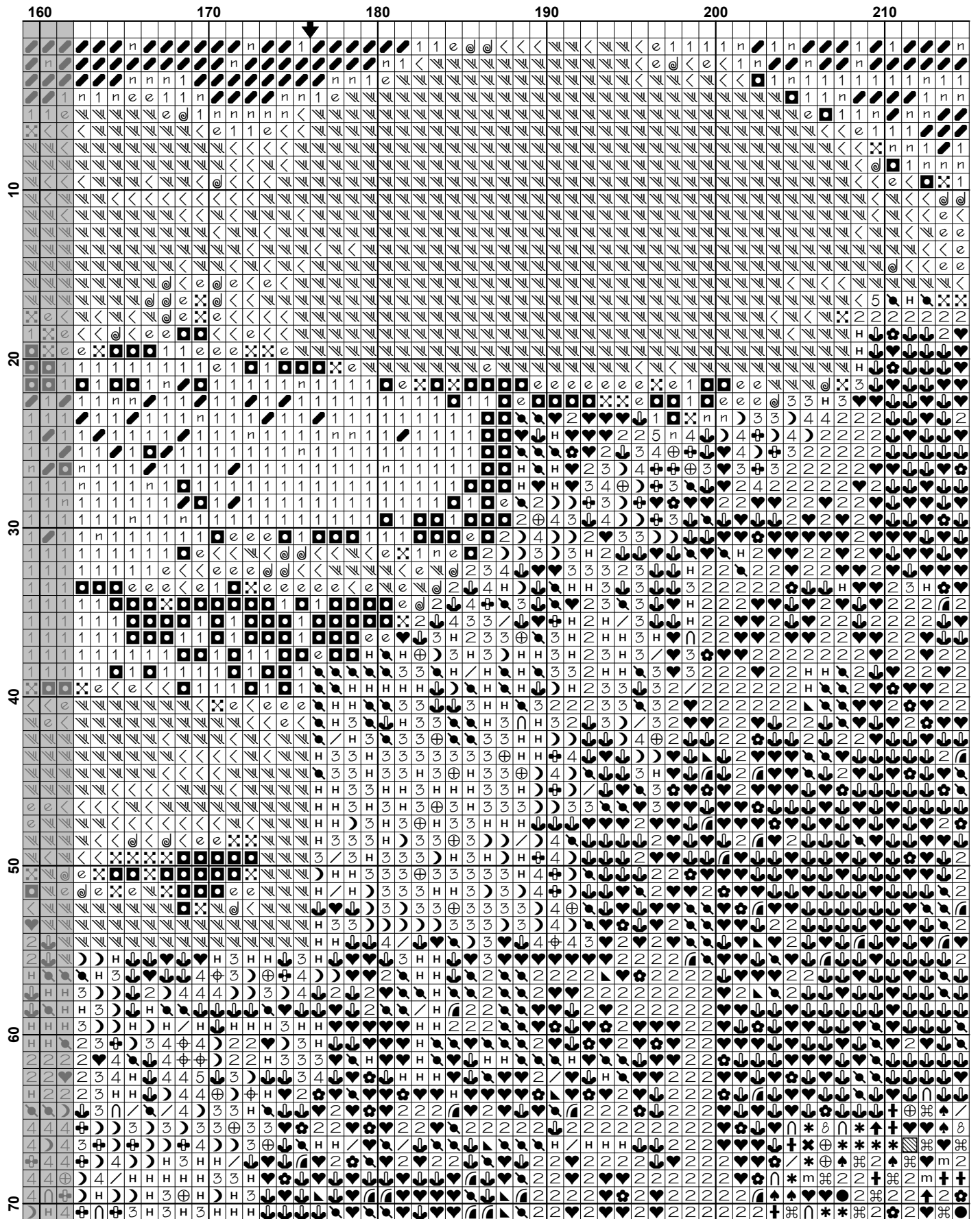
Websites: www.artecy.com and www.artecyshop.com
Email: artecy@artecy.com or stitch@artecyshop.com

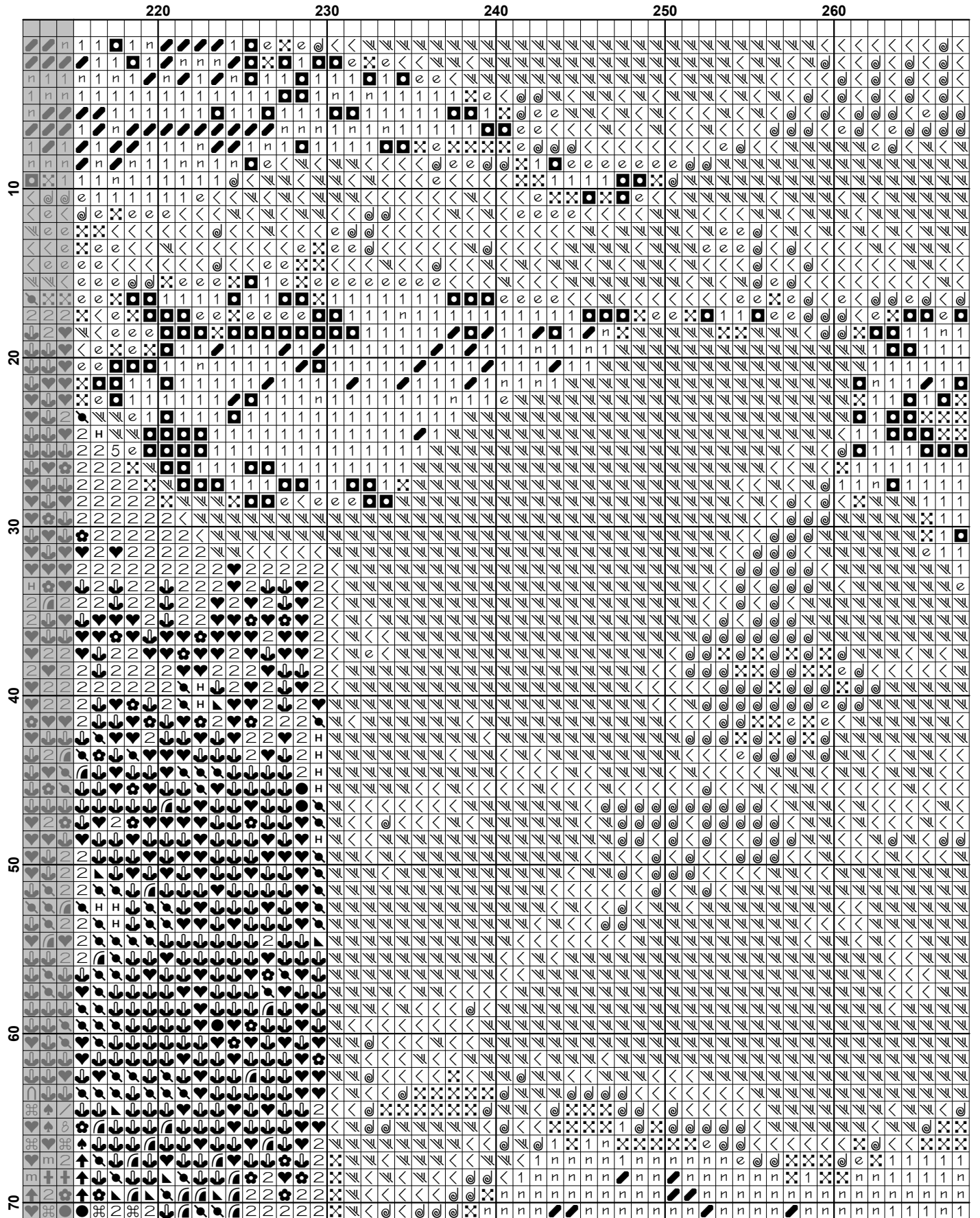
*Patterns are strictly for personal use only. It is against our copyright to make kits for sale from our designs or to sell, copy or redistribute this pattern in any form. You may not upload our patterns to any internet forums or groups or any other website. You may make 1 copy of this pattern for a working copy for your own personal use if needed.

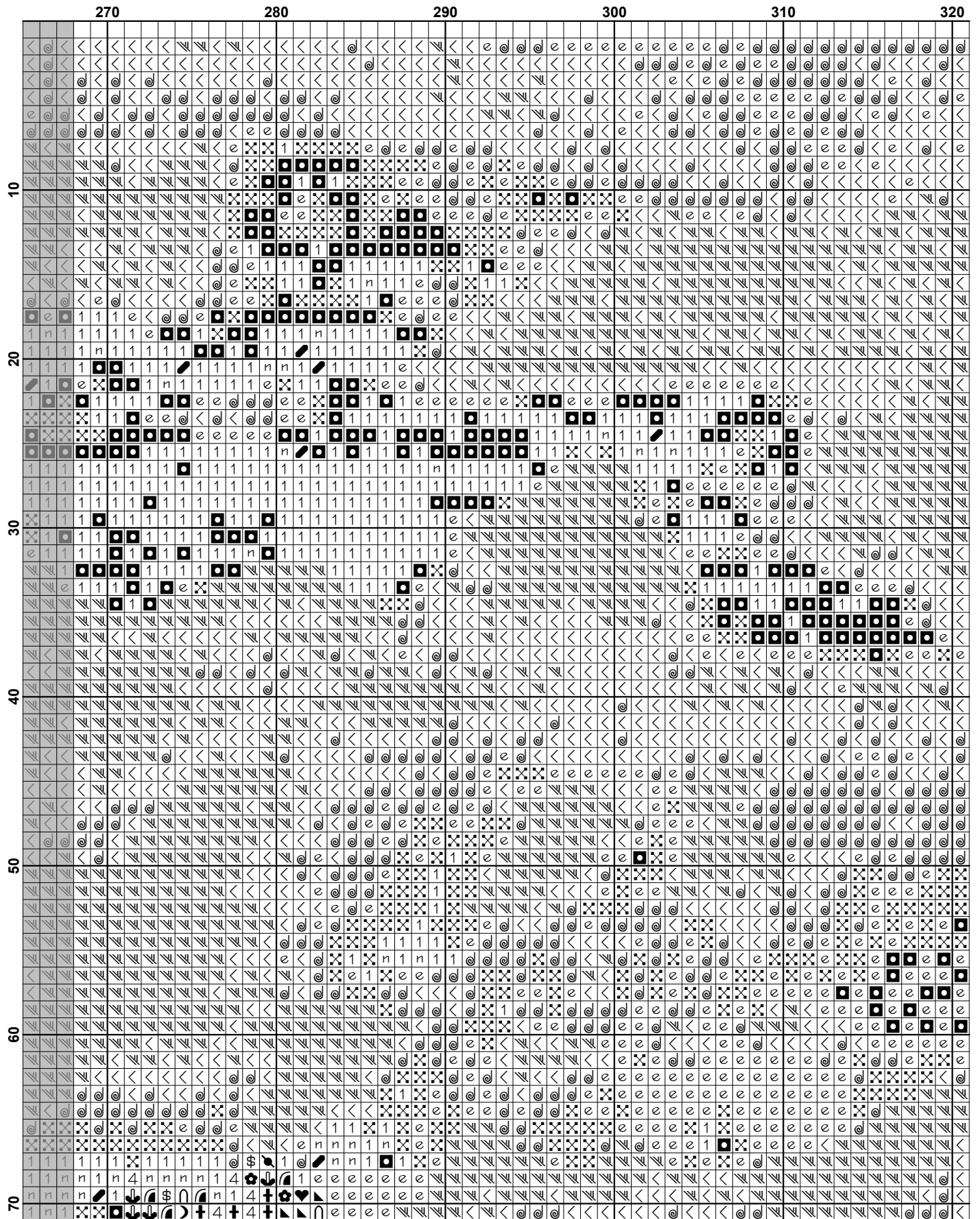


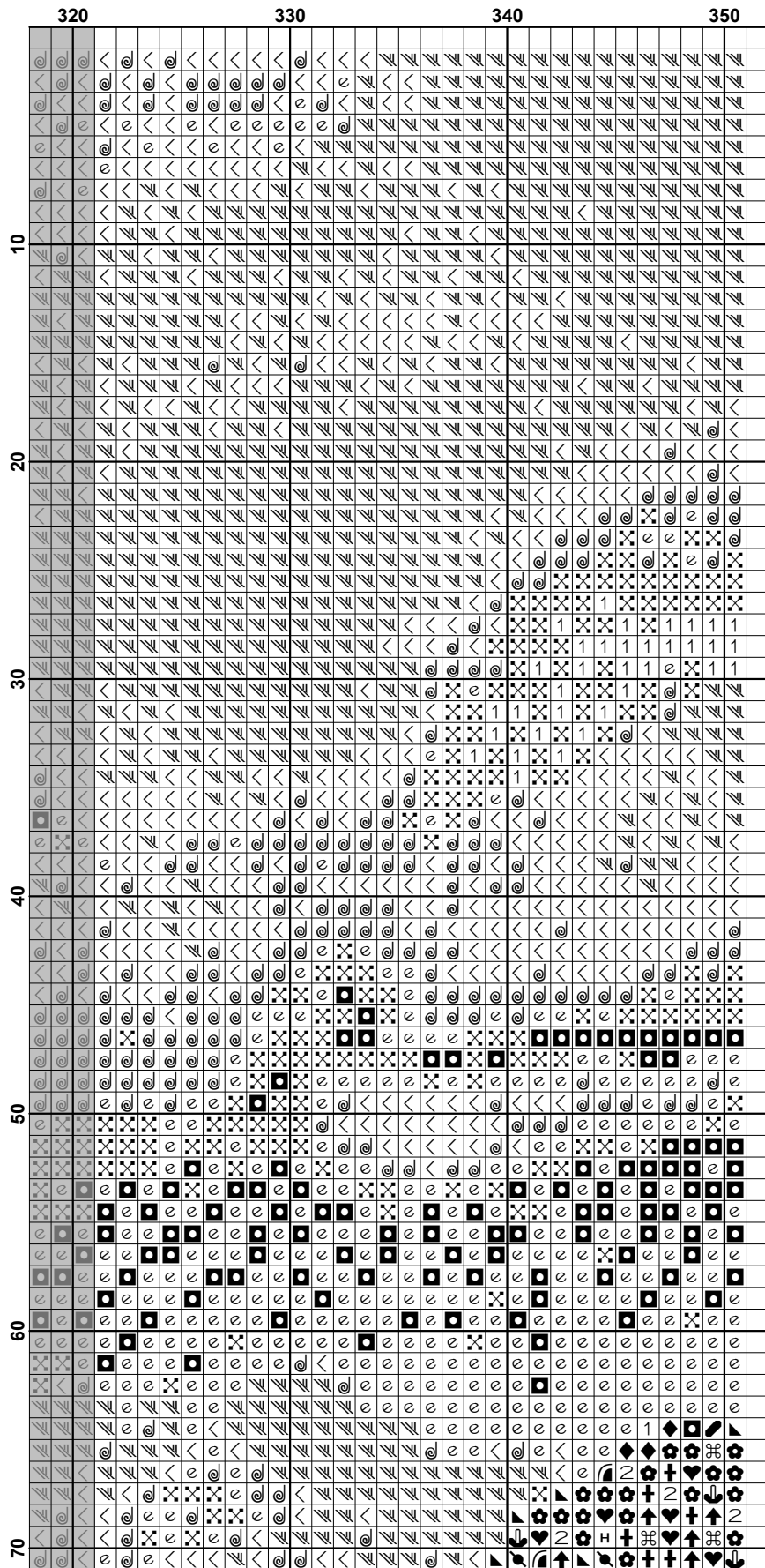


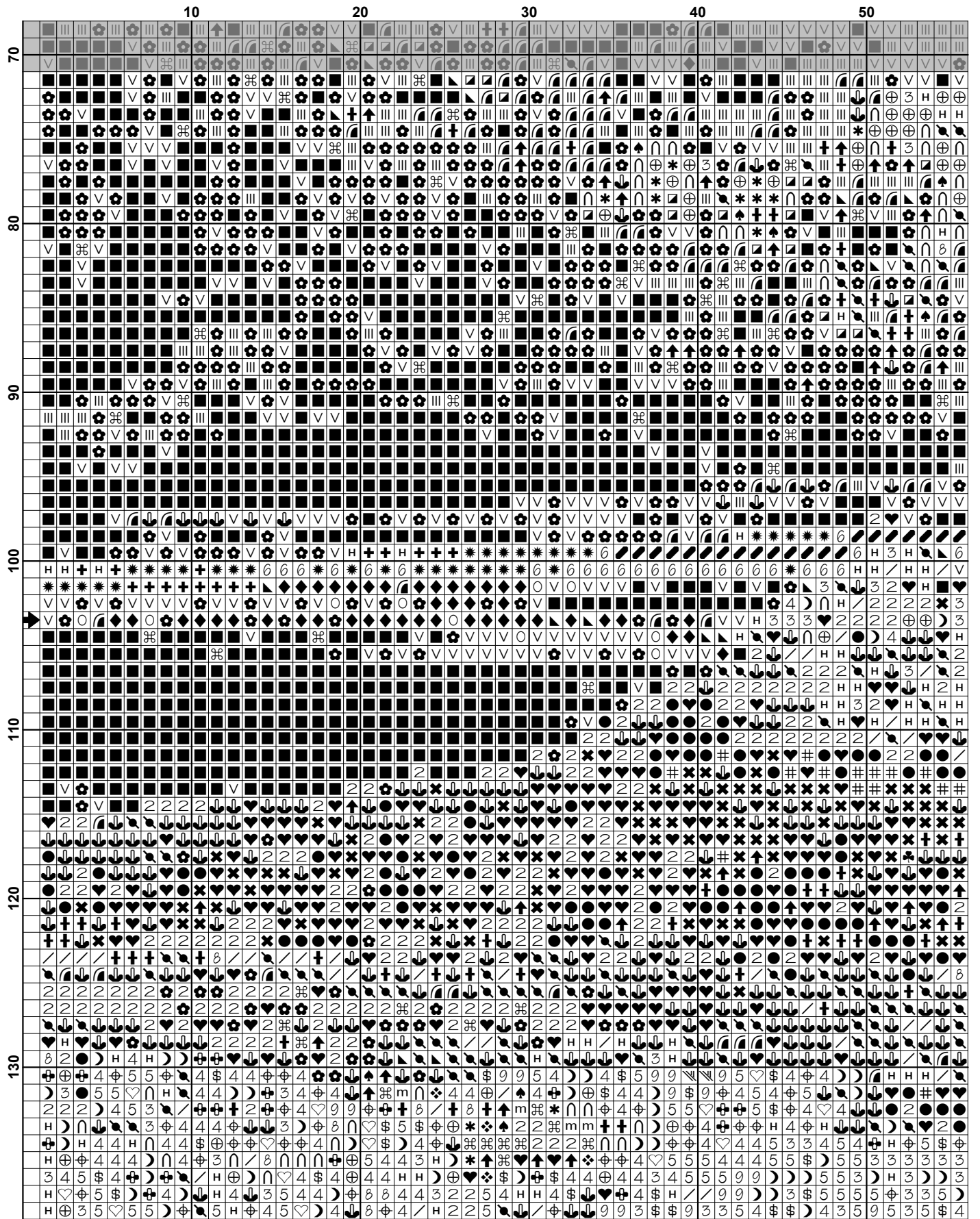


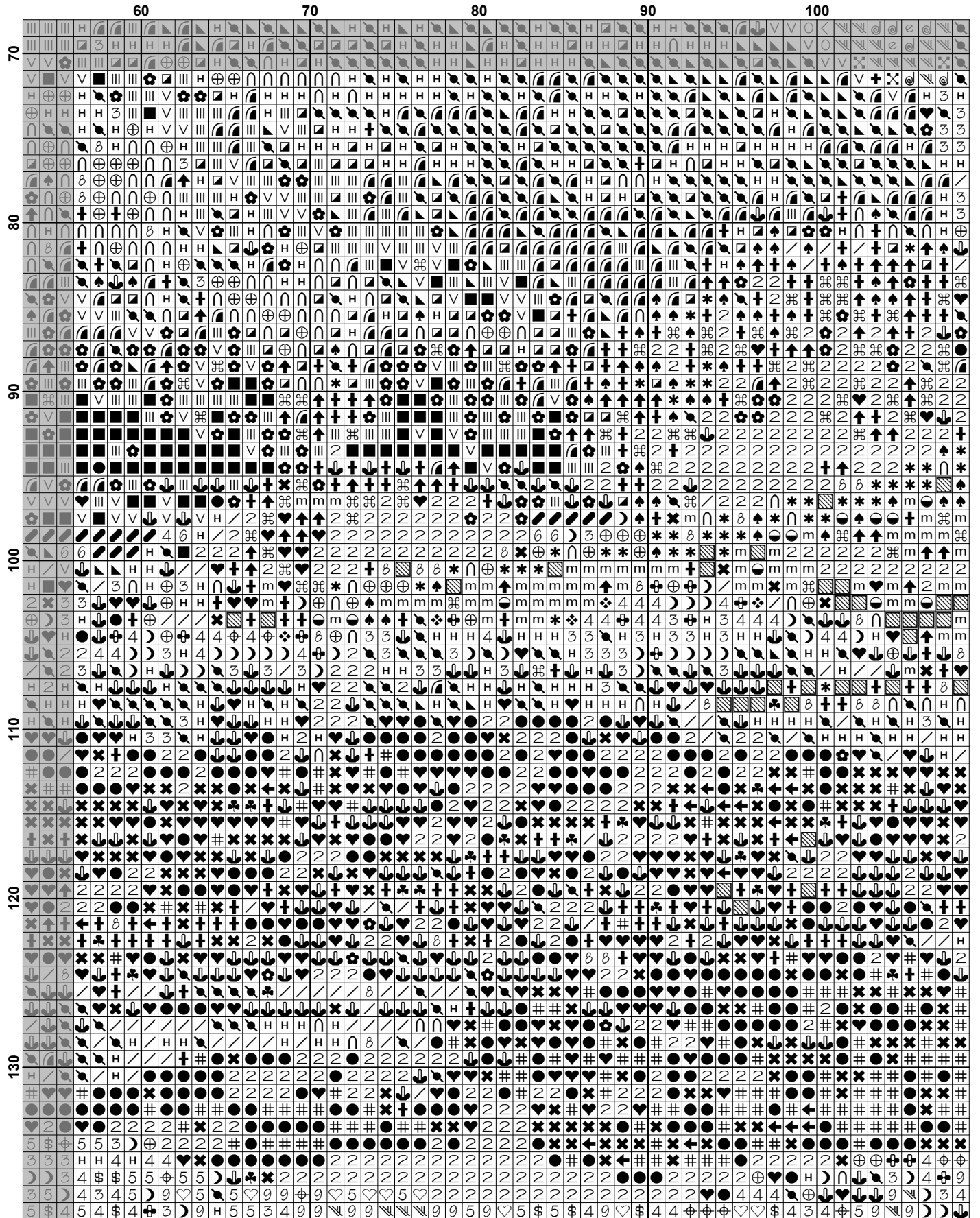


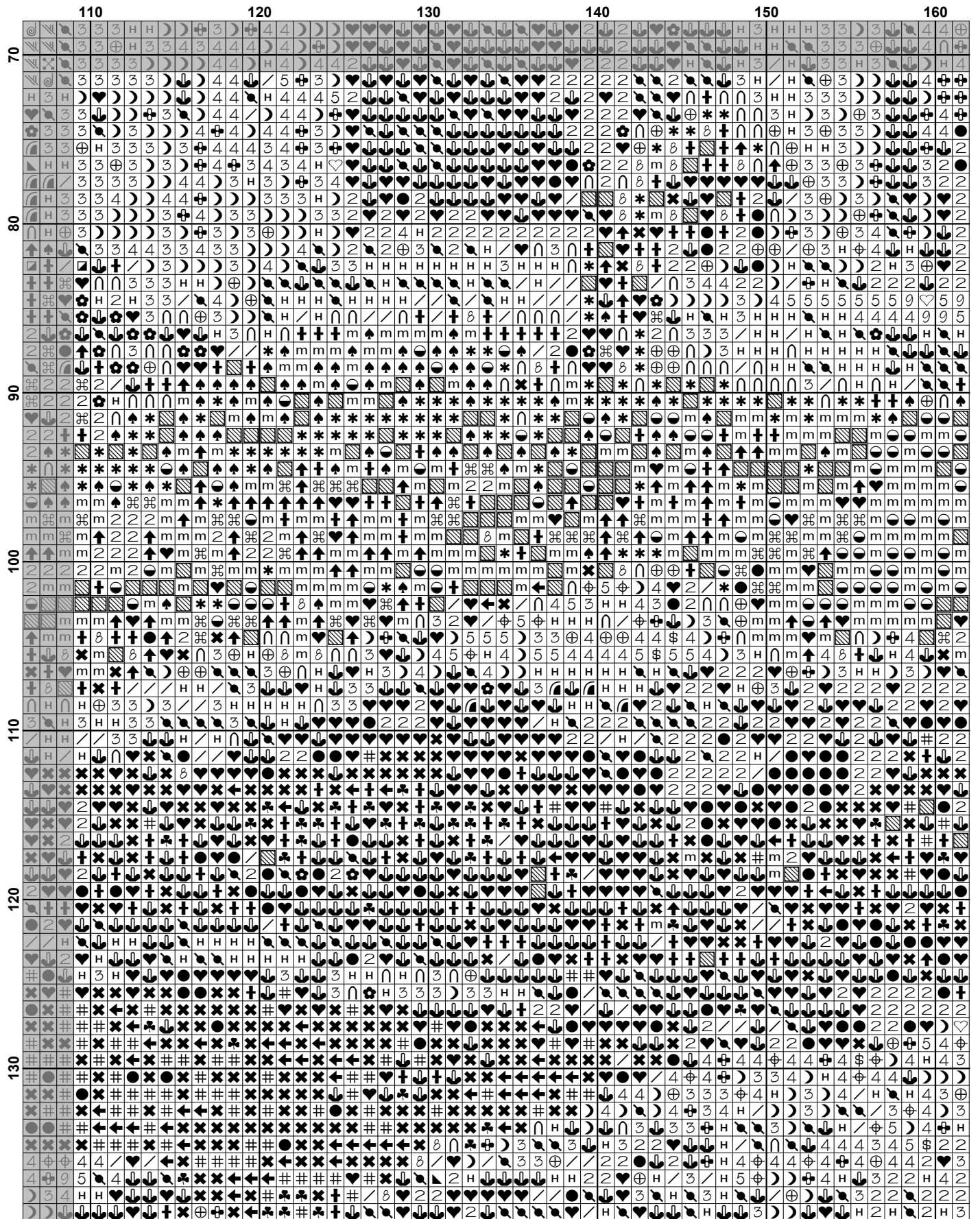


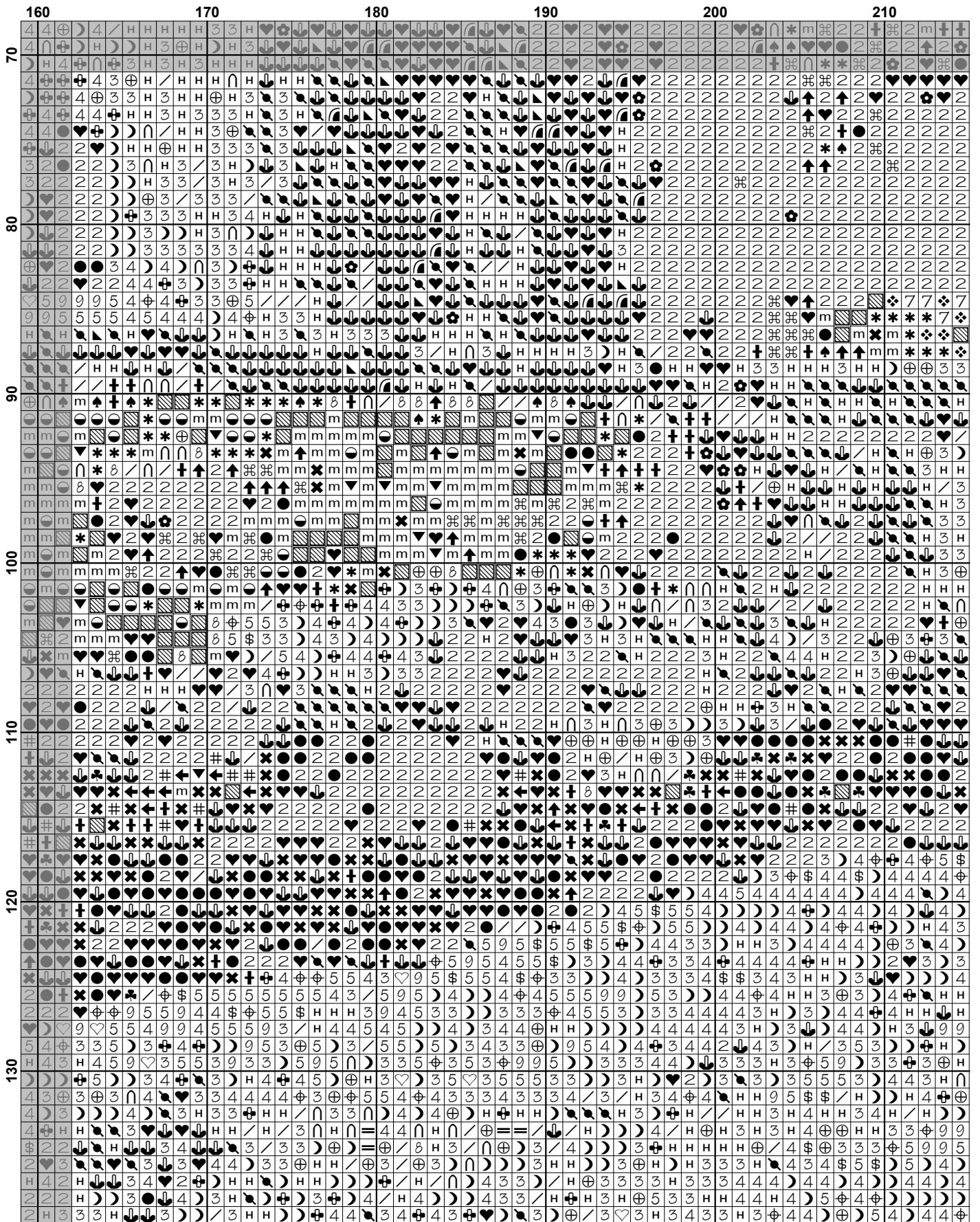


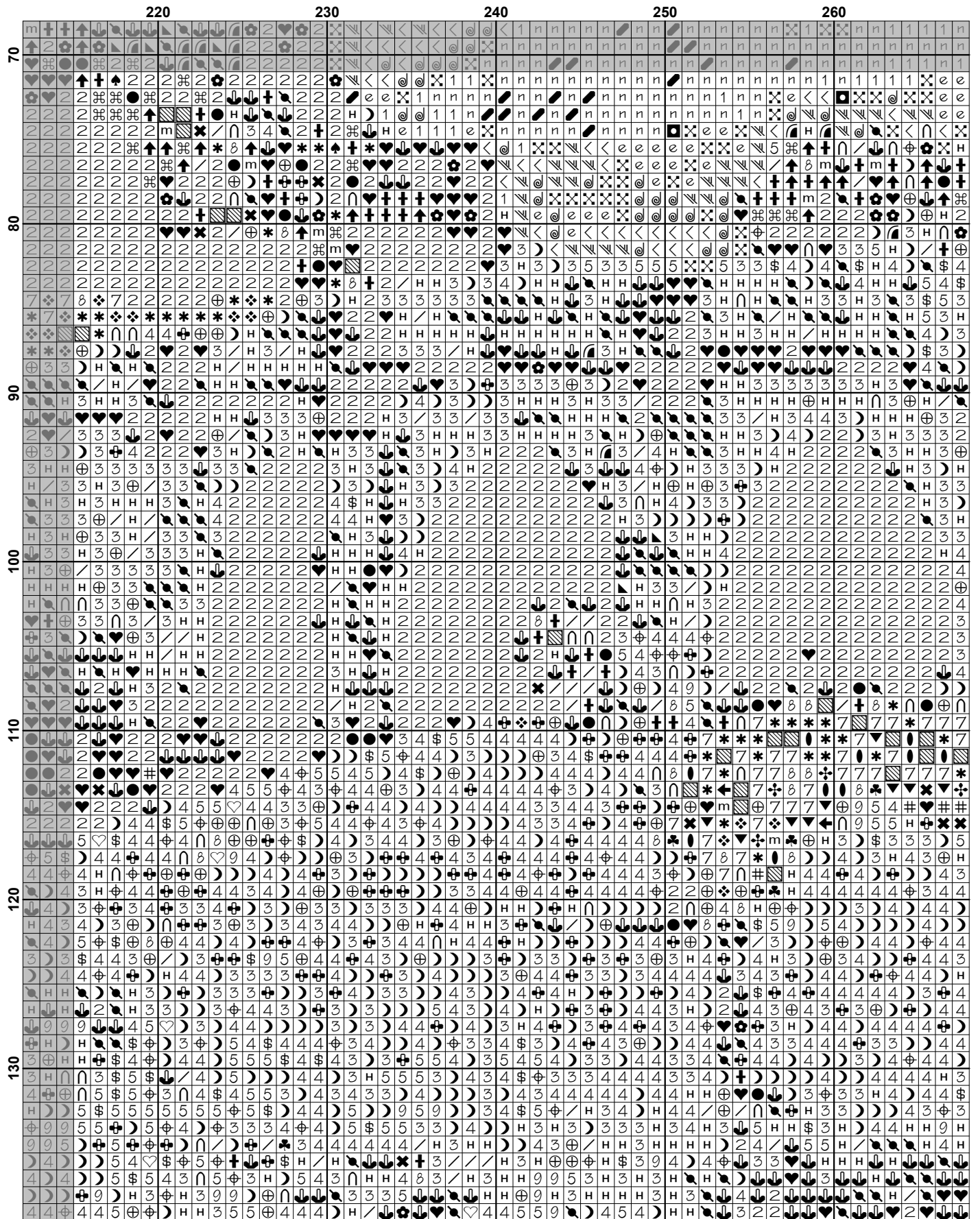


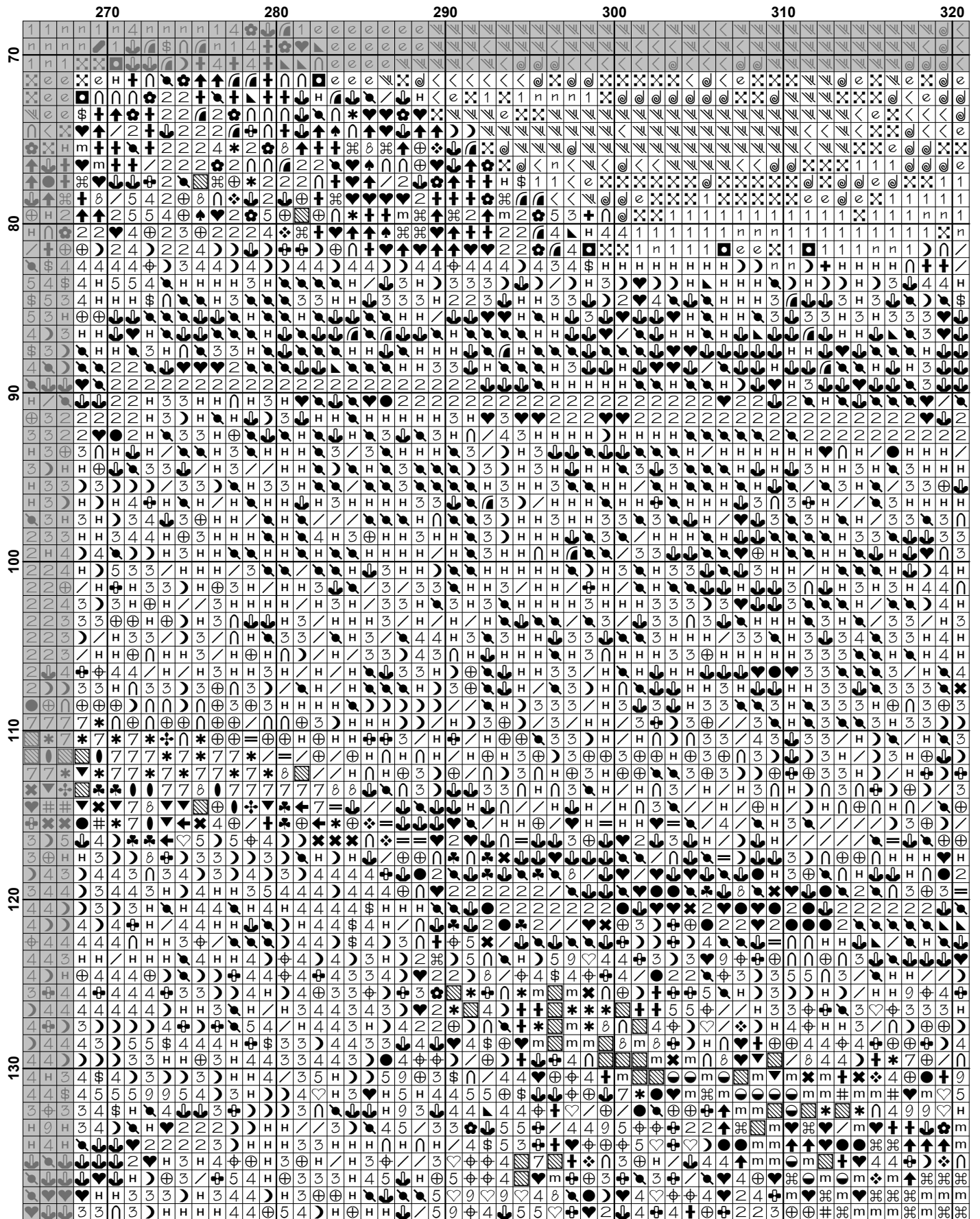


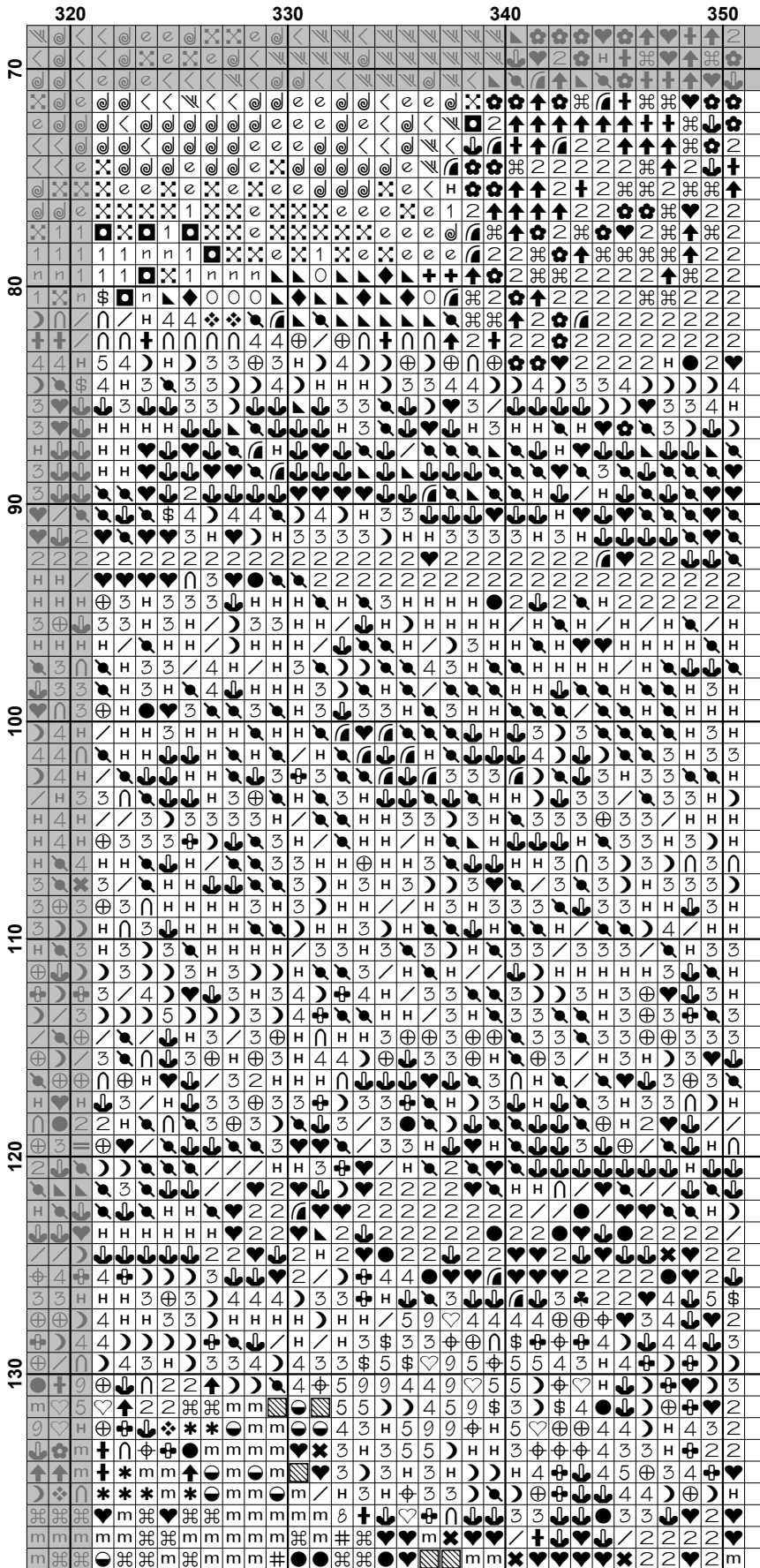


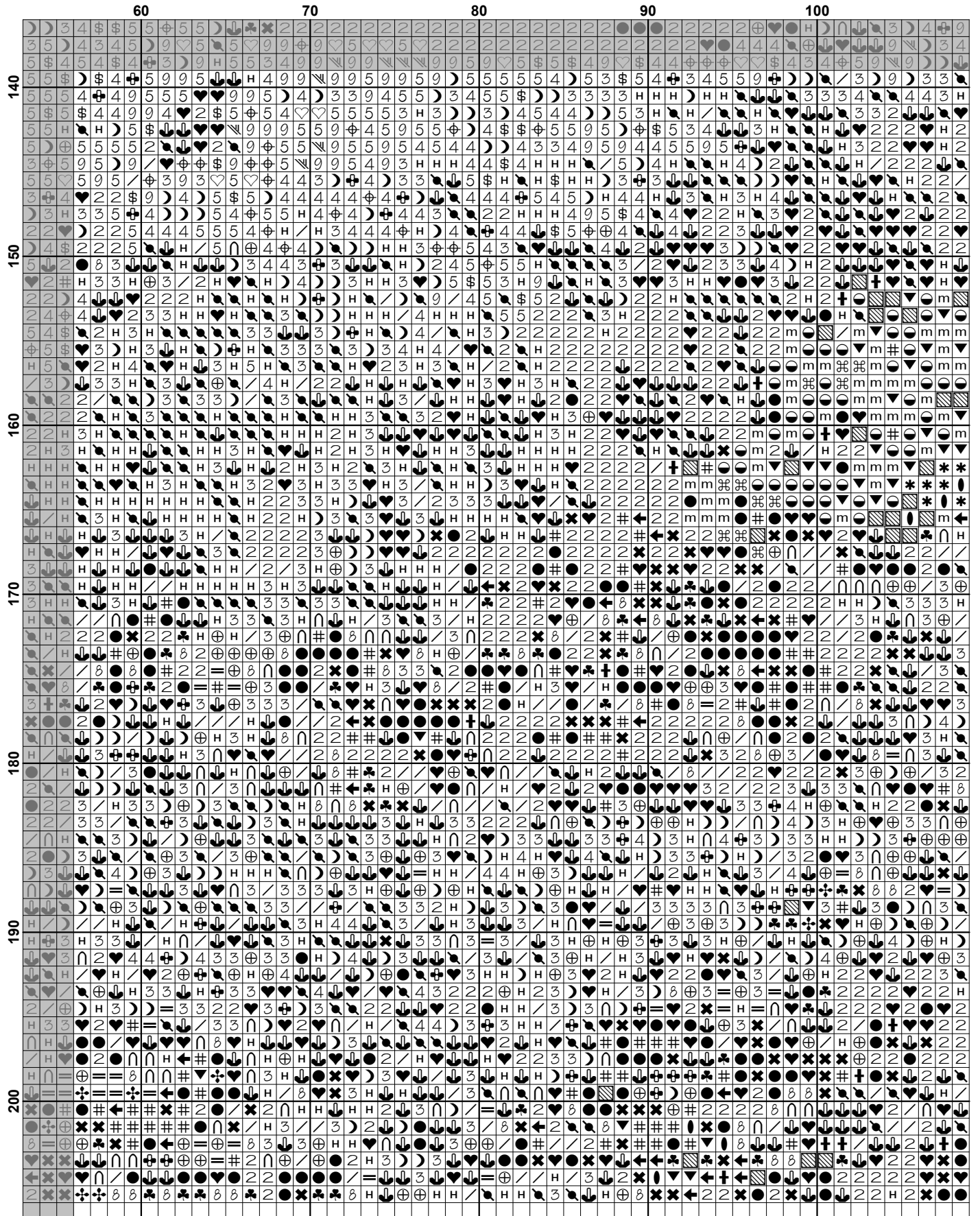


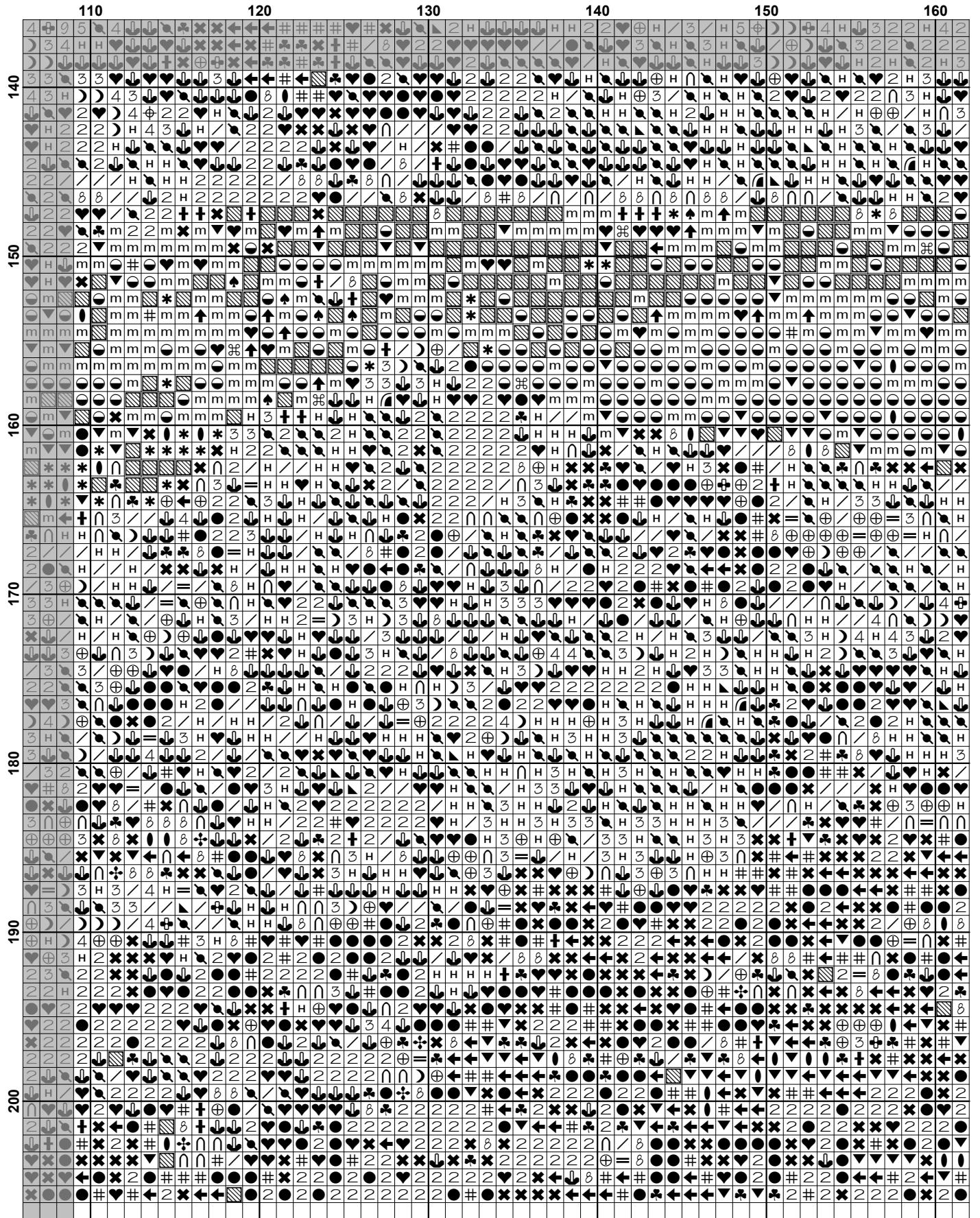


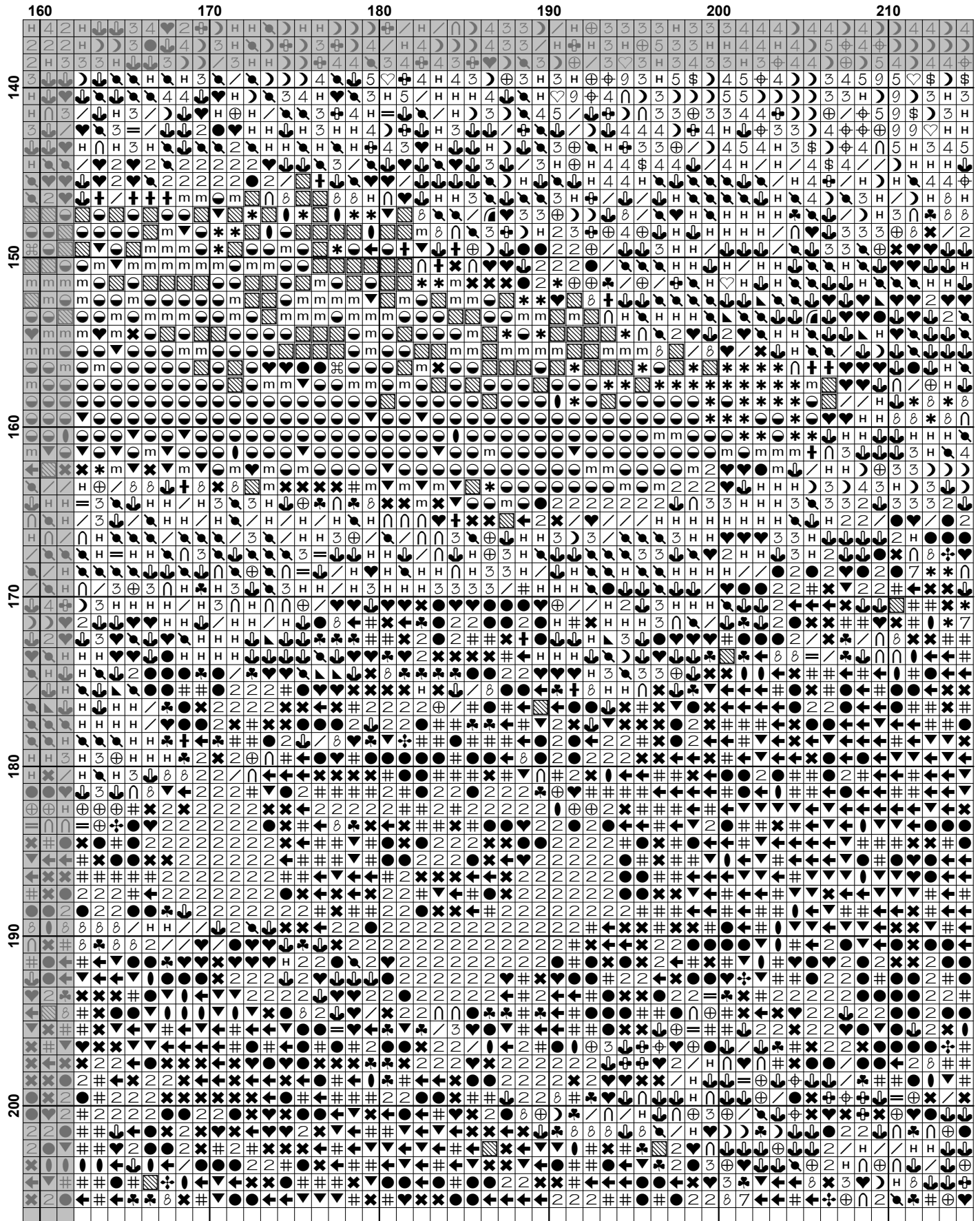


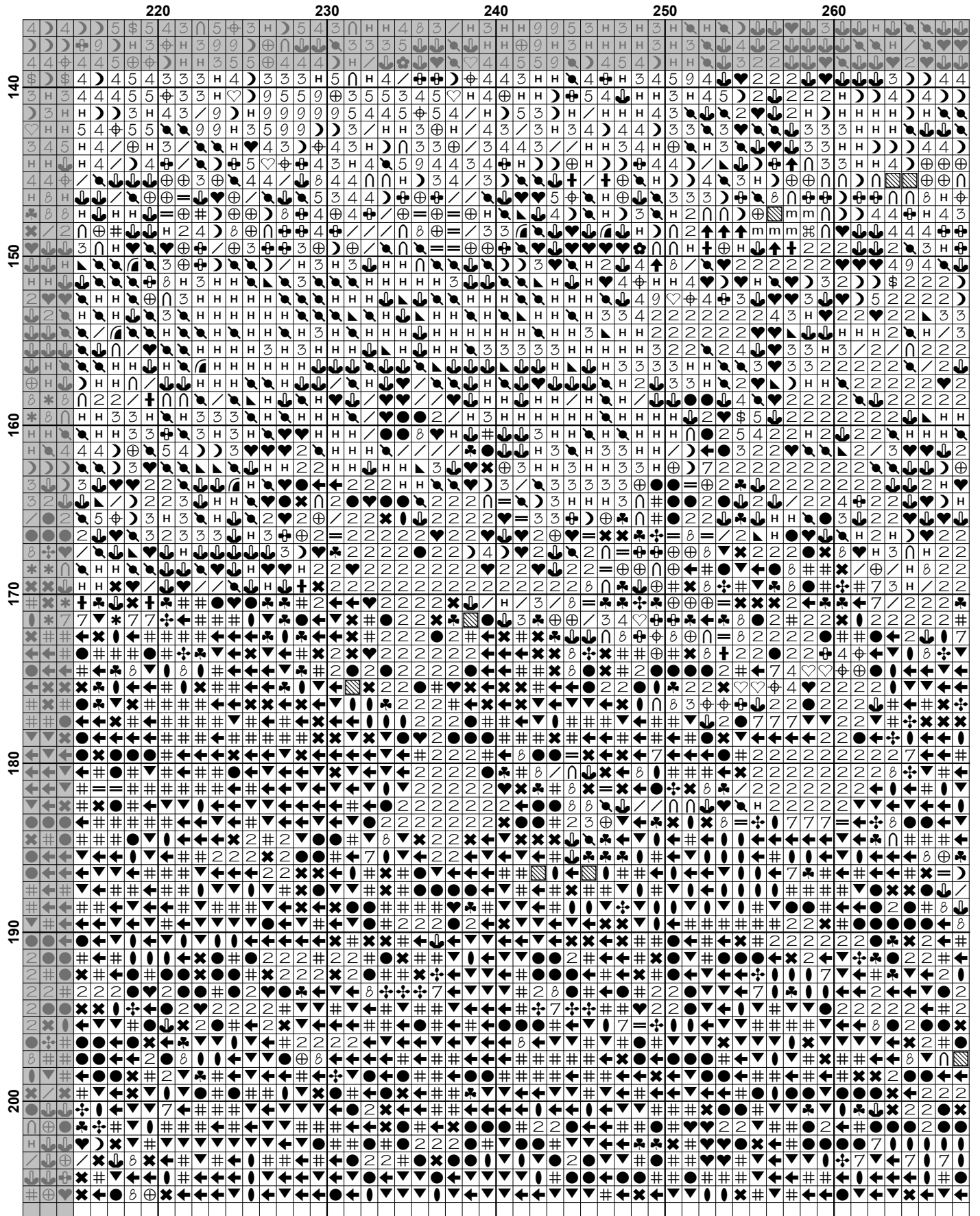


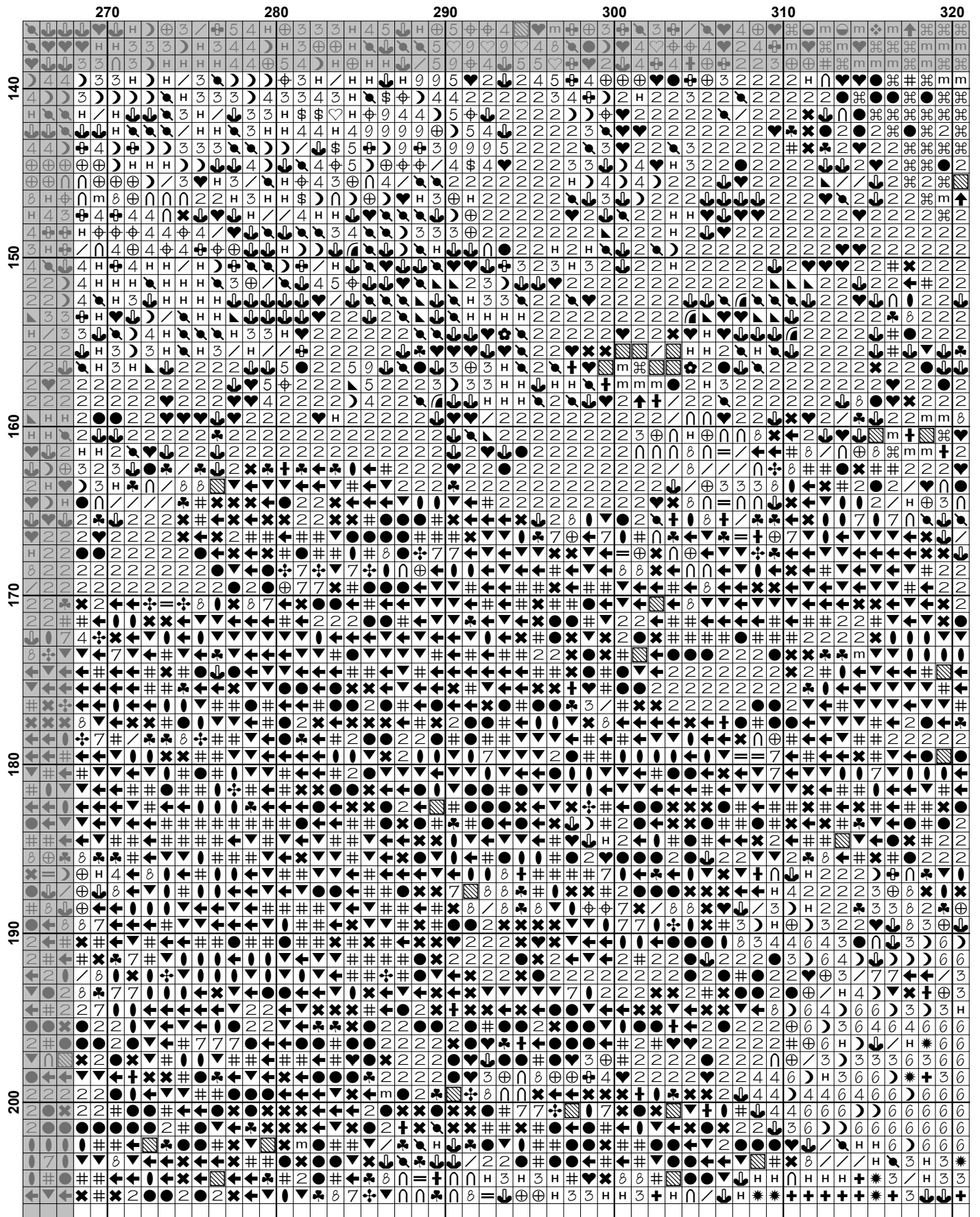


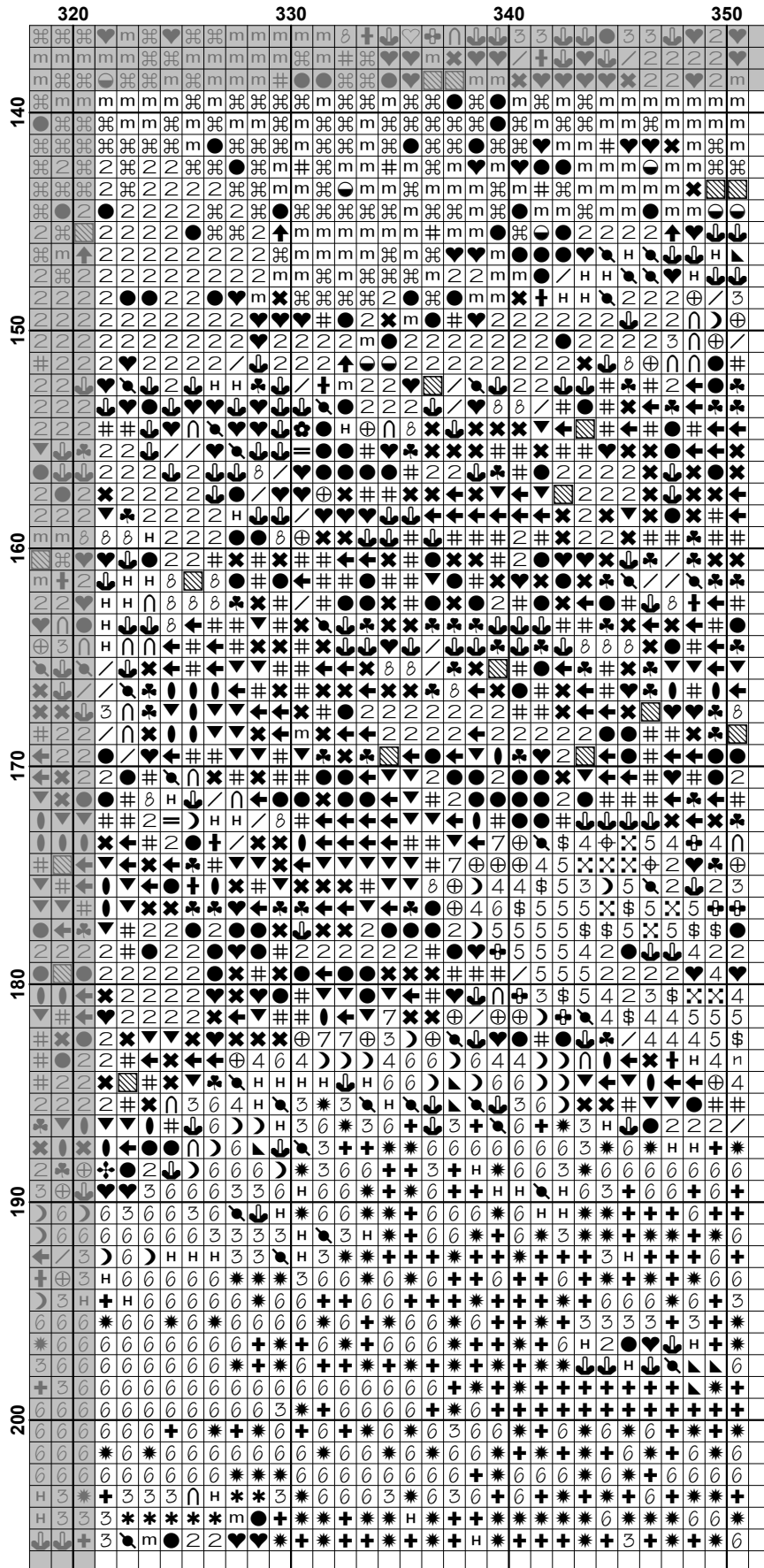
























Pattern Name: Eilean Donan Castle
Designed By: Photo by Barnil - Pixabay
Company: Artecy Cross Stitch
Copyright: Copyright Artecy Cross Stitch. All rights Reserved.
Fabric: Aida 14, White
 350w X 205h Stitches
Size(s): 14 Count, 25w X 14-5/8h in
 16 Count, 21-7/8w X 12-3/4h in
 18 Count, 19-3/8w X 11-3/8h in

Floss Used for Full Stitches:

Symbol	Strands	Type	Number	Color
	6	2	DMC 160	Gray Blue-MD
	+	2	DMC 161	Gray Blue
	X	2	DMC 162	Blue-UL VY LT
	\$	2	DMC 168	Pewter-VY LT
)	2	DMC 169	Pewter-LT
	2	2	DMC 310	Black
	◆	2	DMC 311	Navy Blue-MD
	H	2	DMC 317	Pewter Gray
	4	2	DMC 318	Steel Gray-LT
	☞	2	DMC 413	Pewter Gray-DK
	3	2	DMC 414	Steel Gray-DK
	5	2	DMC 415	Pearl Gray
	♡	2	DMC 453	Shell Gray-LT
	▨	2	DMC 469	Avocado Green
	☼	2	DMC 500	Blue Green-VY DK
	☛	2	DMC 519	Sky Blue
	+	2	DMC 520	Fern Green-DK
	/	2	DMC 535	Ash Gray-VY LT
	∩	2	DMC 645	Beaver Gray-VY DK
	⊕	2	DMC 646	Beaver Gray-DK
	⊕	2	DMC 647	Beaver Gray-MD
	⊕	2	DMC 648	Beaver Gray-LT
	▼	2	DMC 730	Olive Green-VY DK
	e	2	DMC 747	Sky Blue-VY LT
	9	2	DMC 762	Pearl Gray-VY LT
	@	2	DMC 775	Baby Blue-VY LT
	♣	2	DMC 779	Cocoa-DK
	←	2	DMC 801	Coffee Brown-DK
	O	2	DMC 803	Baby Blue-UL VY DK
	V	2	DMC 823	Navy Blue-DK
	1	2	DMC 827	Blue-VY LT
	◌	2	DMC 830	Golden Olive-DK
	⌘	2	DMC 890	Pistachio Green-UL DK
	↑	2	DMC 895	Hunter Green-VY DK
	m	2	DMC 904	Parrot Green-VY DK
	◐	2	DMC 905	Parrot Green-DK
	☾	2	DMC 924	Gray Green--VY DK
	▲	2	DMC 930	Antique Blue-DK
	*	2	DMC 931	Antique Blue-MD
	♥	2	DMC 934	Black Avocado Green
	#	2	DMC 938	Coffee Brown-UL DK
	■	2	DMC 939	Navy Blue-VY DK
	♠	2	DMC 987	Forest Green-DK
	7	2	DMC 3012	Khaki Green-MD
	X	2	DMC 3031	Mocha Brown-VY DK
	n	2	DMC 3325	Baby Blue-LT

Symbol	Strands	Type	Number	Color
	*	2	DMC 3346	Hunter Green
	❖	2	DMC 3364	Pine Green
	●	2	DMC 3371	Black Brown
		2	DMC 3750	Antique Blue-VY DK
	<	2	DMC 3756	Baby Blue-UL VY LT
	■	2	DMC 3761	Sky Blue-LT
	8	2	DMC 3787	Brown Gray-DK
	☞	2	DMC 3799	Pewter Gray-VY DK
	▣	2	DMC 3815	Celadon Green-DK
		2	DMC 3860	Cocoa
	✻	2	DMC 3862	Mocha Beige-DK
	✎	2	DMC 3865	Winter White

Notes:

The middle of this pattern can be found on page 11 and is 176 stitches across and 104 stitches down.

Pattern layout using page numbers in top left.

```

1  2  3  4  5  6  7
8  9  10 11 12 13 14
15 16 17 18 19 20 21

```

Usage Summary

Strands Per Skein: 6

Skein Length: 313.0 in

Type	Number	Full	Half	Quarter	Petite	Back(in)	Str(in)	Spec(in)	French	Bead	Skein Est.
DMC 160	160	300	0	0	0	0.0	0.0	0.0	0	0	1.000
DMC 161	161	176	0	0	0	0.0	0.0	0.0	0	0	1.000
DMC 162	162	1663	0	0	0	0.0	0.0	0.0	0	0	1.000
DMC 168	168	204	0	0	0	0.0	0.0	0.0	0	0	1.000
DMC 169	169	1901	0	0	0	0.0	0.0	0.0	0	0	1.000
DMC 310	310	5990	0	0	0	0.0	0.0	0.0	0	0	3.000
DMC 311	311	102	0	0	0	0.0	0.0	0.0	0	0	1.000
DMC 317	317	4175	0	0	0	0.0	0.0	0.0	0	0	2.000
DMC 318	318	1669	0	0	0	0.0	0.0	0.0	0	0	1.000
DMC 413	413	3162	0	0	0	0.0	0.0	0.0	0	0	2.000
DMC 414	414	3086	0	0	0	0.0	0.0	0.0	0	0	2.000
DMC 415	415	670	0	0	0	0.0	0.0	0.0	0	0	1.000
DMC 453	453	89	0	0	0	0.0	0.0	0.0	0	0	1.000
DMC 469	469	675	0	0	0	0.0	0.0	0.0	0	0	1.000
DMC 500	500	902	0	0	0	0.0	0.0	0.0	0	0	1.000
DMC 519	519	899	0	0	0	0.0	0.0	0.0	0	0	1.000
DMC 520	520	655	0	0	0	0.0	0.0	0.0	0	0	1.000
DMC 535	535	1538	0	0	0	0.0	0.0	0.0	0	0	1.000
DMC 645	645	910	0	0	0	0.0	0.0	0.0	0	0	1.000
DMC 646	646	1058	0	0	0	0.0	0.0	0.0	0	0	1.000
DMC 647	647	550	0	0	0	0.0	0.0	0.0	0	0	1.000
DMC 648	648	332	0	0	0	0.0	0.0	0.0	0	0	1.000
DMC 730	730	824	0	0	0	0.0	0.0	0.0	0	0	1.000
DMC 747	747	1491	0	0	0	0.0	0.0	0.0	0	0	1.000
DMC 762	762	235	0	0	0	0.0	0.0	0.0	0	0	1.000
DMC 775	775	1496	0	0	0	0.0	0.0	0.0	0	0	1.000
DMC 779	779	449	0	0	0	0.0	0.0	0.0	0	0	1.000
DMC 801	801	1327	0	0	0	0.0	0.0	0.0	0	0	1.000
DMC 803	803	63	0	0	0	0.0	0.0	0.0	0	0	1.000
DMC 823	823	705	0	0	0	0.0	0.0	0.0	0	0	1.000
DMC 827	827	3410	0	0	0	0.0	0.0	0.0	0	0	2.000
DMC 830	830	358	0	0	0	0.0	0.0	0.0	0	0	1.000
DMC 890	890	459	0	0	0	0.0	0.0	0.0	0	0	1.000
DMC 895	895	315	0	0	0	0.0	0.0	0.0	0	0	1.000
DMC 904	904	946	0	0	0	0.0	0.0	0.0	0	0	1.000
DMC 905	905	673	0	0	0	0.0	0.0	0.0	0	0	1.000
DMC 924	924	584	0	0	0	0.0	0.0	0.0	0	0	1.000
DMC 930	930	400	0	0	0	0.0	0.0	0.0	0	0	1.000
DMC 931	931	166	0	0	0	0.0	0.0	0.0	0	0	1.000
DMC 934	934	3177	0	0	0	0.0	0.0	0.0	0	0	2.000
DMC 938	938	1485	0	0	0	0.0	0.0	0.0	0	0	1.000
DMC 939	939	1196	0	0	0	0.0	0.0	0.0	0	0	1.000
DMC 987	987	169	0	0	0	0.0	0.0	0.0	0	0	1.000
DMC 3012	3012	143	0	0	0	0.0	0.0	0.0	0	0	1.000
DMC 3031	3031	1823	0	0	0	0.0	0.0	0.0	0	0	1.000
DMC 3325	3325	618	0	0	0	0.0	0.0	0.0	0	0	1.000
DMC 3346	3346	388	0	0	0	0.0	0.0	0.0	0	0	1.000
DMC 3364	3364	39	0	0	0	0.0	0.0	0.0	0	0	1.000
DMC 3371	3371	2059	0	0	0	0.0	0.0	0.0	0	0	1.000
DMC 3750	3750	557	0	0	0	0.0	0.0	0.0	0	0	1.000
DMC 3756	3756	2514	0	0	0	0.0	0.0	0.0	0	0	2.000
DMC 3761	3761	1768	0	0	0	0.0	0.0	0.0	0	0	1.000

Type	Number	Full	Half	Quarter	Petite	Back(in)	Str(in)	Spec(in)	French	Bead	Skein	Est.
■ DMC	3787	470	0	0	0	0.0	0.0	0.0	0	0	1.000	
■ DMC	3799	4479	0	0	0	0.0	0.0	0.0	0	0	2.000	
■ DMC	3815	210	0	0	0	0.0	0.0	0.0	0	0	1.000	
■ DMC	3860	138	0	0	0	0.0	0.0	0.0	0	0	1.000	
■ DMC	3862	78	0	0	0	0.0	0.0	0.0	0	0	1.000	
□ DMC	3865	5832	0	0	0	0.0	0.0	0.0	0	0	3.000	