

# Artecy

## CROSS STITCH

### Eltz Castle



\* Original image© Tom - Pixabay. Cross Stitch Design by Tereena Clarke.

Completed Size = 300w x 196h Stitches

14 Count, 21.5w x 14h inches (55cm x 36cm)

16 Count, 19w x 12.5h inches (48cm x 32cm)

18 Count, 17w x 11h inches (43cm x 28cm)

Uses 70 DMC cotton colours. Only full cross stitches are used in this pattern.

# *Pattern Instructions*

\* This pattern can be worked on any fabric type, colour or count you prefer. To work out the size of the finished article, take the number of stitches wide and high and divide it by the count of your fabric (e.g. 14,16,18 count aida etc) to get the size in inches. Times it by 2.54 to get centimetres. We have the sizes in inches shown on the previous page. Also leave at least a few inches of fabric around each side of the design to assist in framing. The higher the fabric count the smaller the completed project will be.

\* To put the pattern together look in the top and bottom corners. The page numbers in brackets show which page number it joins up to. Page 1 always starts at the top left hand side of the pattern. Our pages also have a shaded grey section. This indicates a 3 row overlap from adjoining pages to assist with reading the pattern. PLEASE DO NOT RESTITCH THIS AREA.

\* You should begin at the centre of the pattern. To find the centre of the pattern it is just a matter of laying the pattern out and locating the arrows at the top and left hand side of the patterns, they are determined by dividing the stitch numbers wide and high in half. Where the two points meet in the middle, that is the centre.

\* If you need more assistance to find the middle of your pattern or the page layout, please see the notes section on the colour symbol chart. The easiest way to stitch this pattern, as it has multiple pages, is to stitch one page at a time.

\* We suggest using two strands of floss for each stitch and one strand for backstitching if the pattern calls for it.

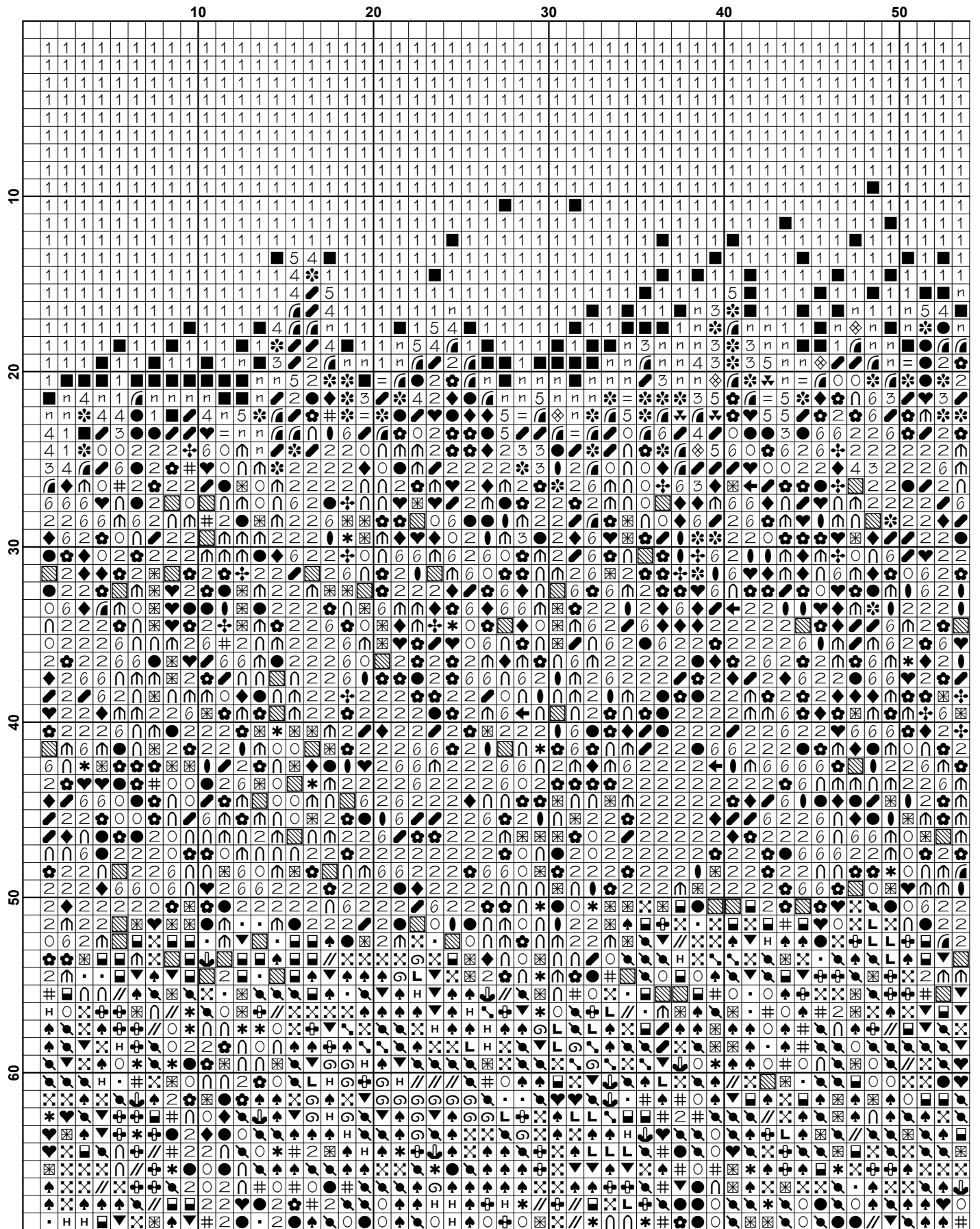
We hope you enjoy stitching our pattern.

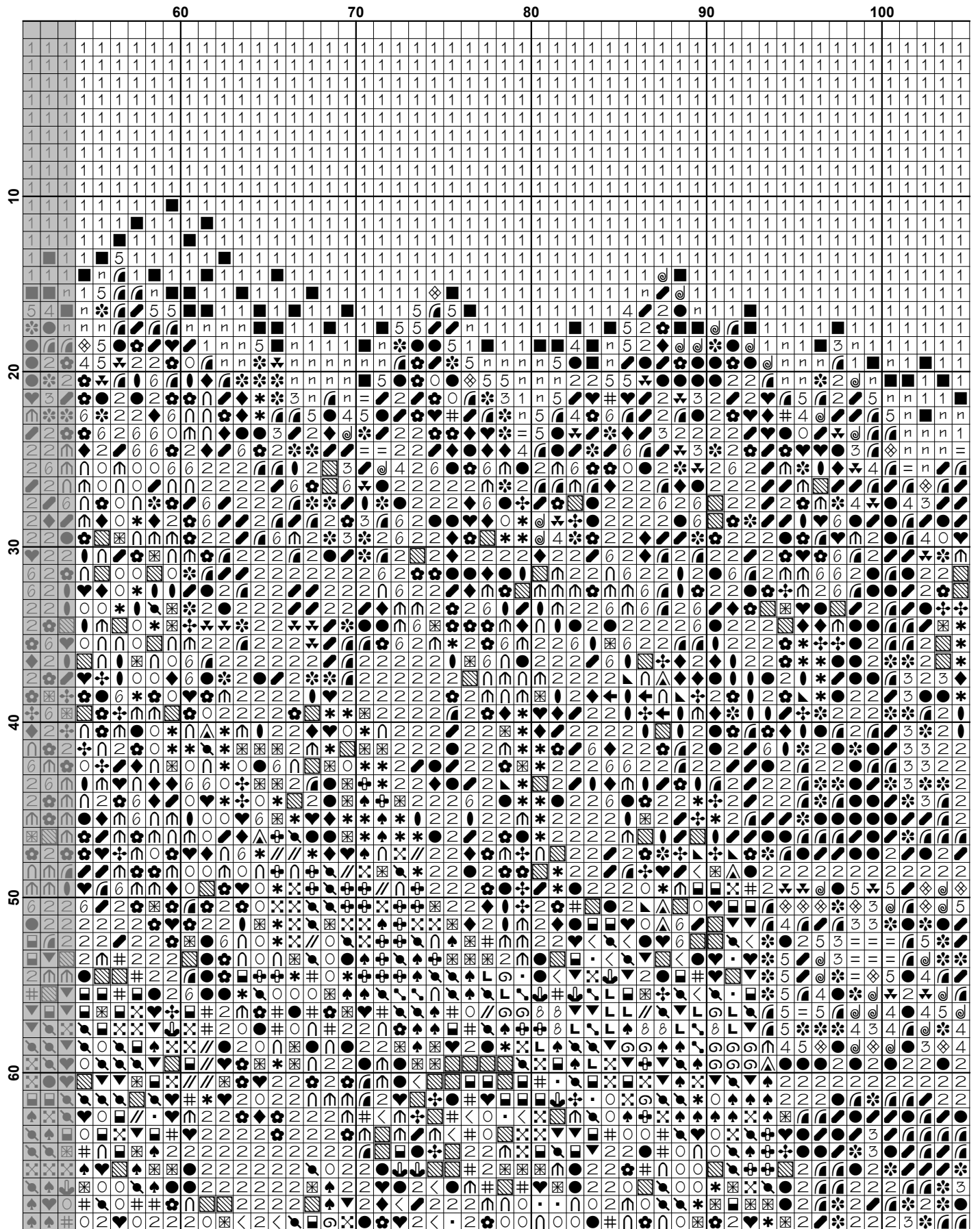
Thanks and Best Wishes  
Tereena Clarke

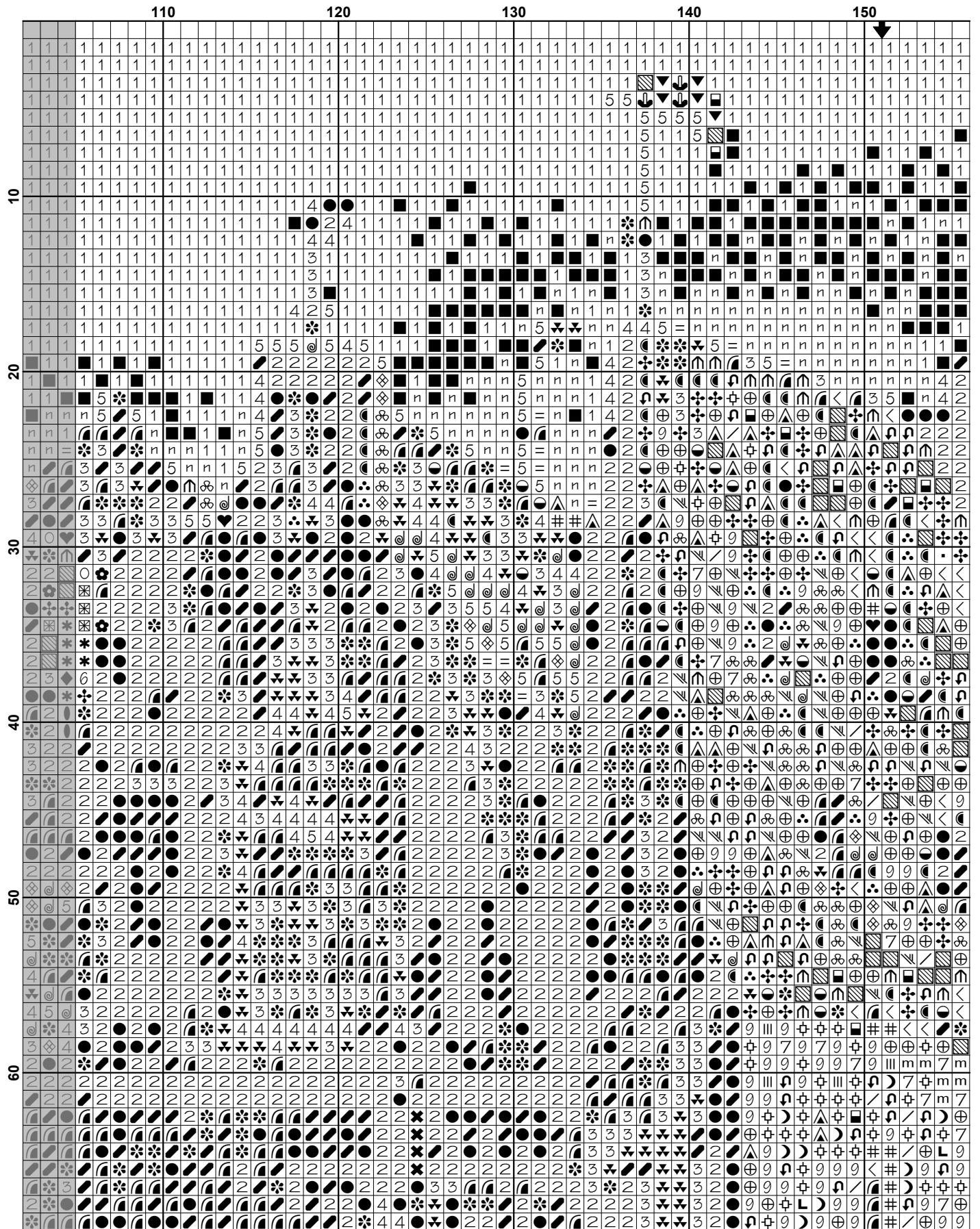
Artecy Cross Stitch  
Po Box 3474  
Tuggerah, NSW 2259  
Australia

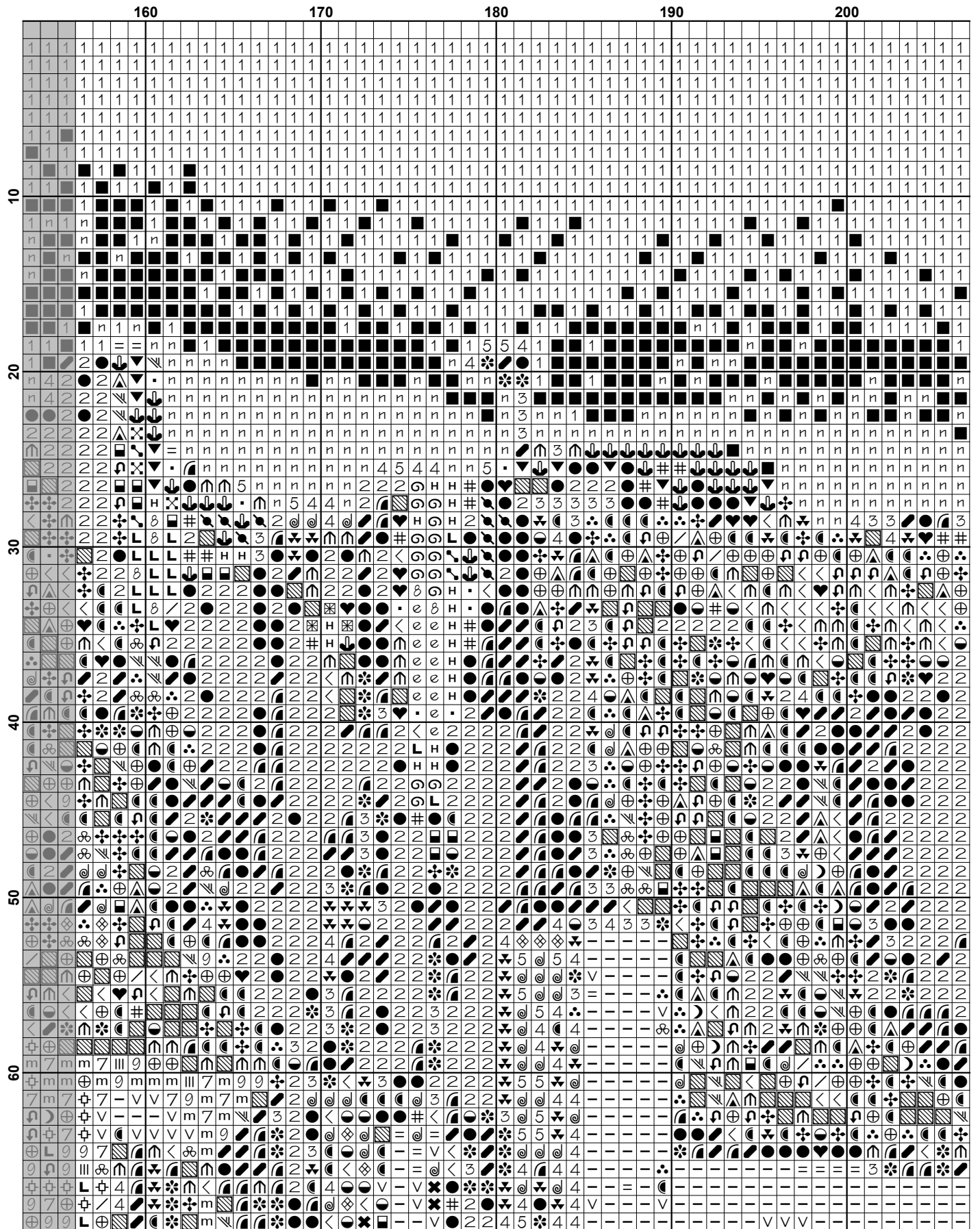
Websites: [www.artecy.com](http://www.artecy.com) and [www.artecyshop.com](http://www.artecyshop.com)  
Email: [artecy@artecy.com](mailto:artecy@artecy.com) or [stitch@artecyshop.com](mailto:stitch@artecyshop.com)

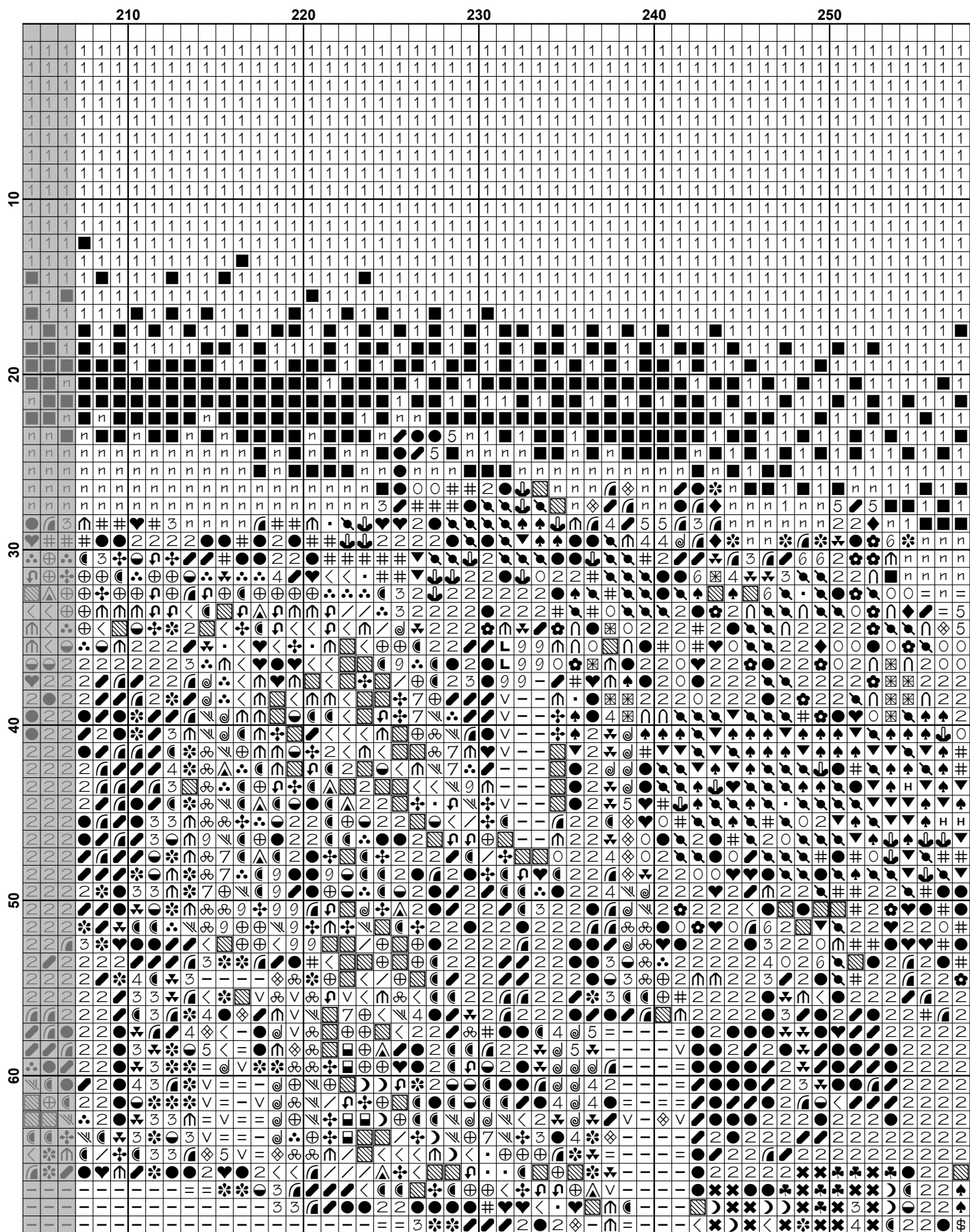
\*Patterns are strictly for personal use only. It is against our copyright to make kits for sale from our designs or to sell, copy or redistribute this pattern in any form. You may not upload our patterns to any internet forums or groups or any other website. You may make 1 copy of this pattern for a working copy for your own personal use if needed.

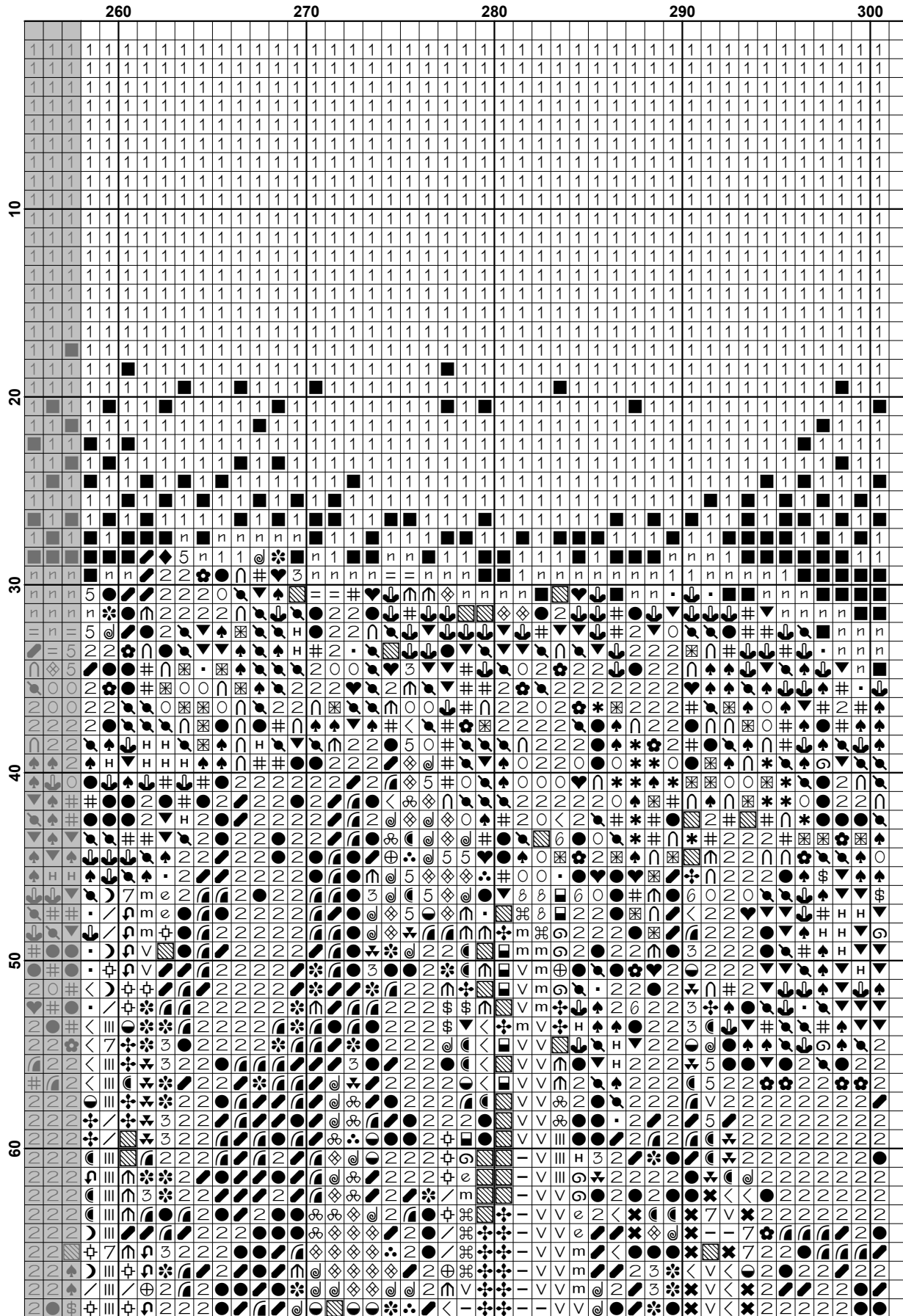




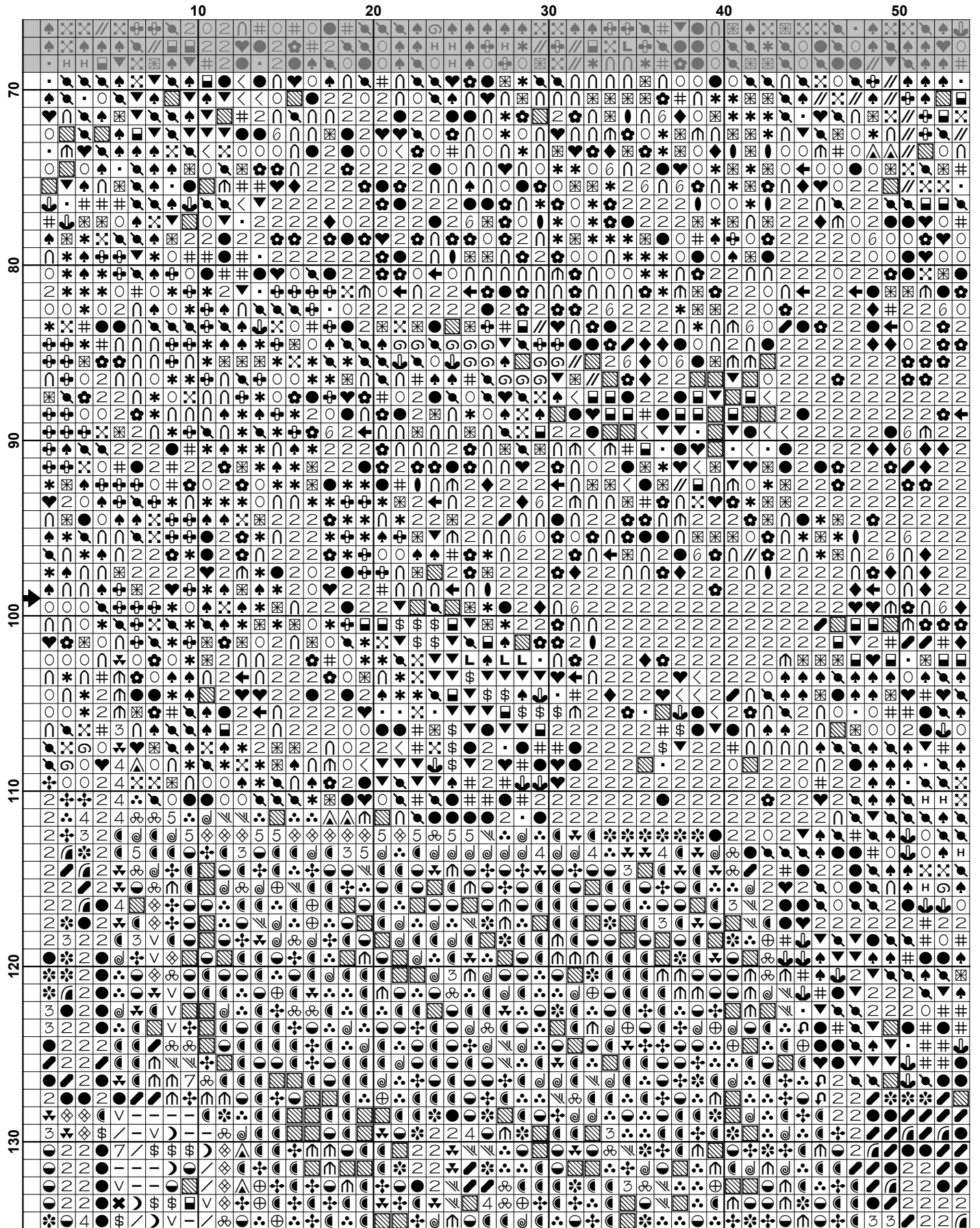


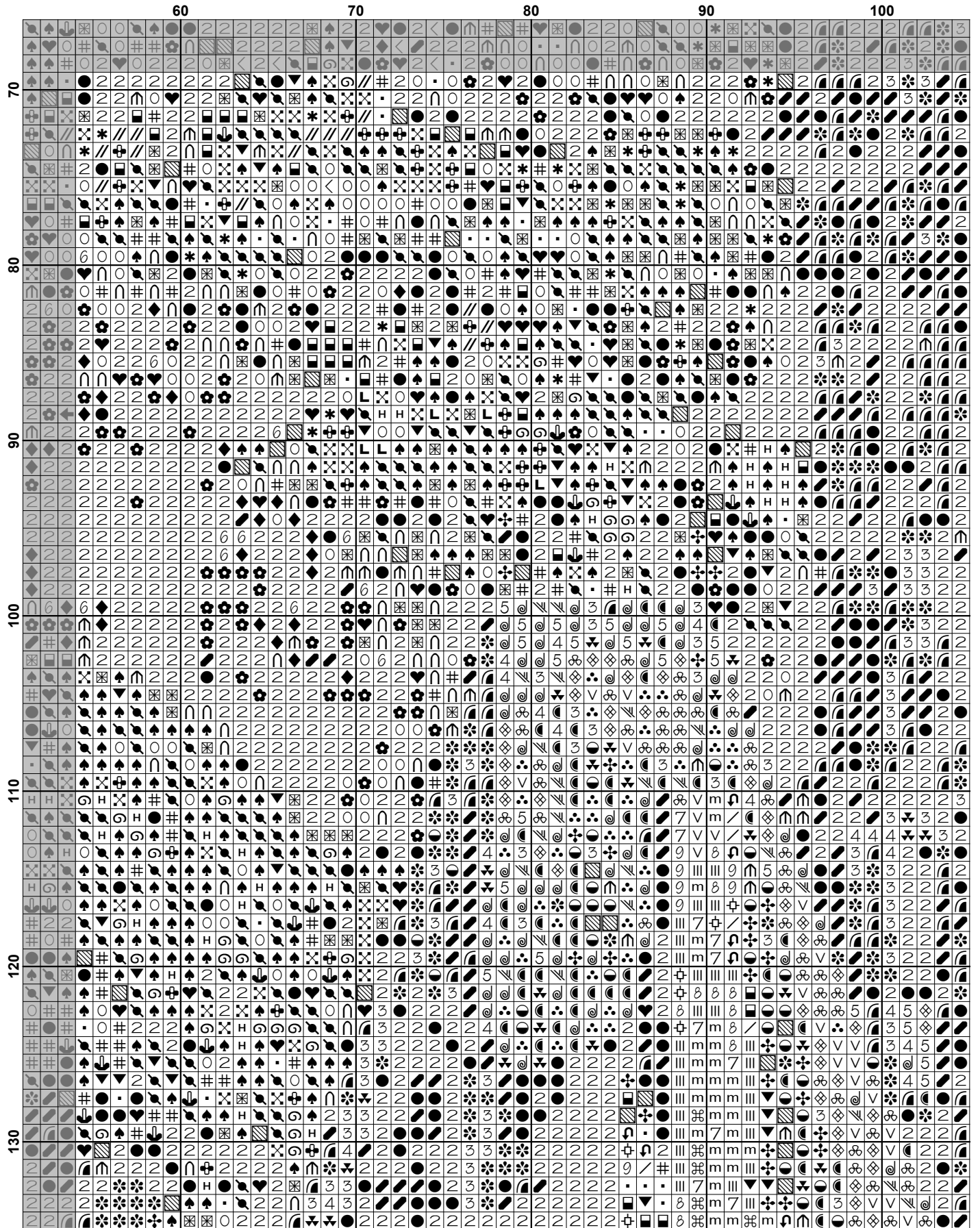


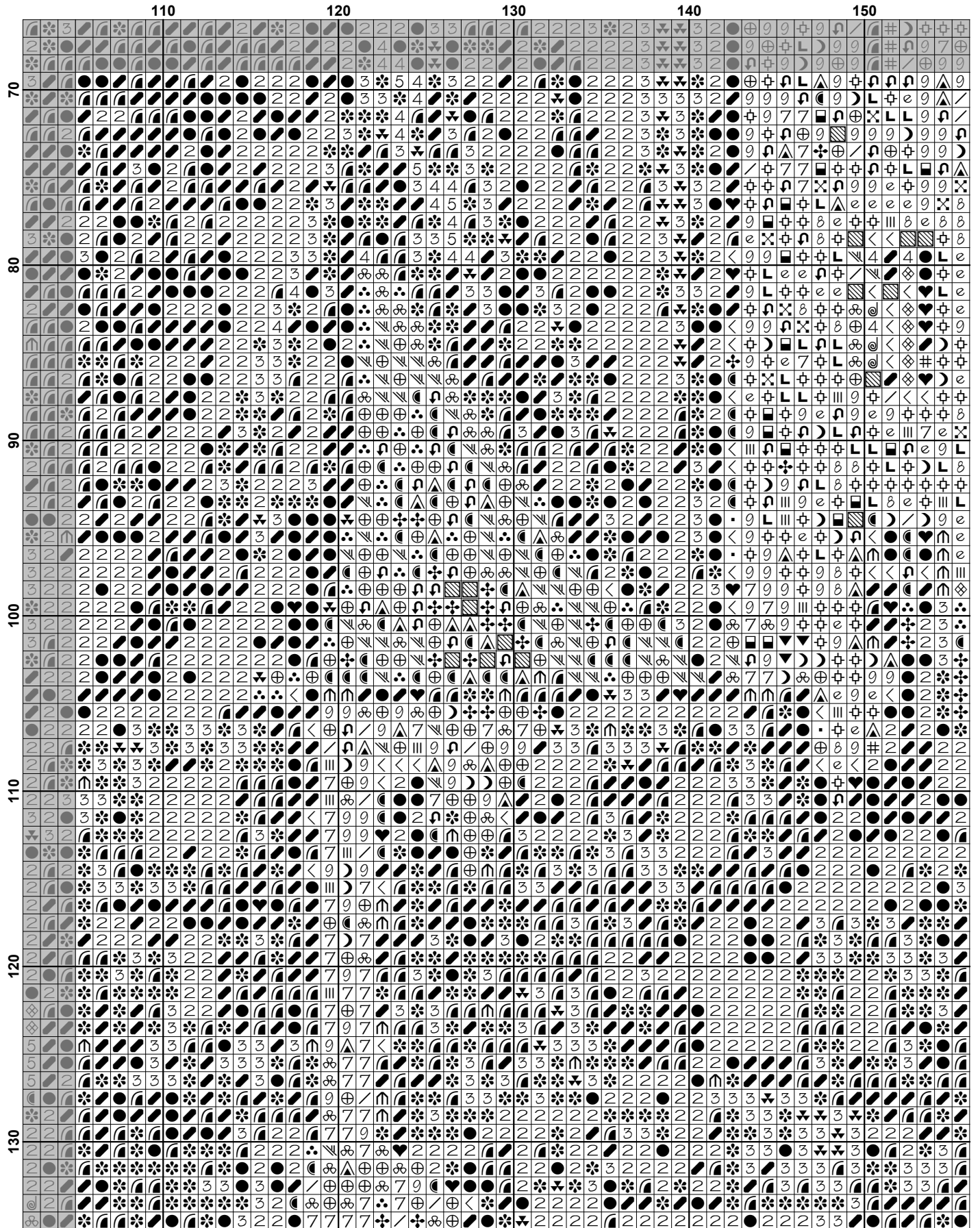


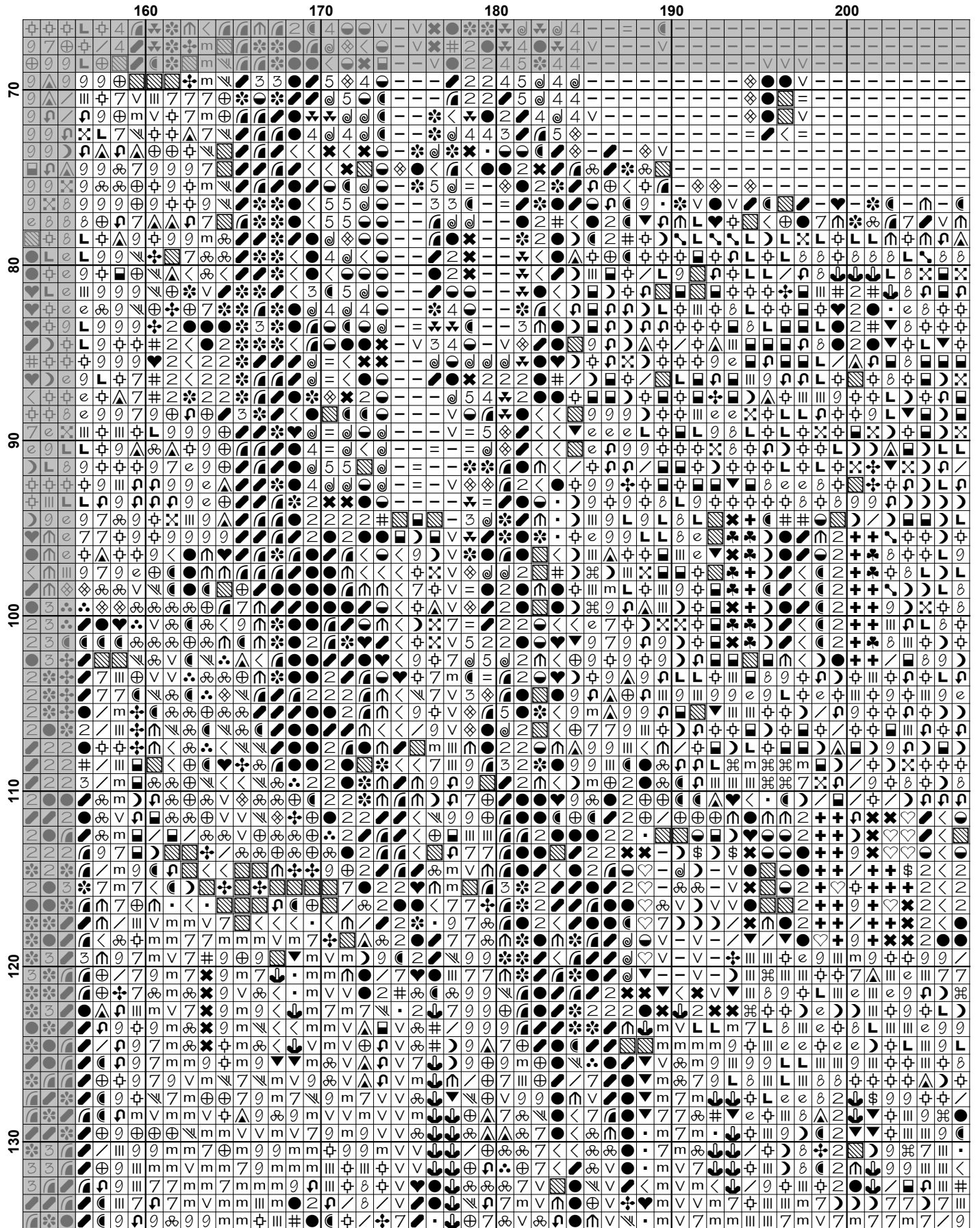


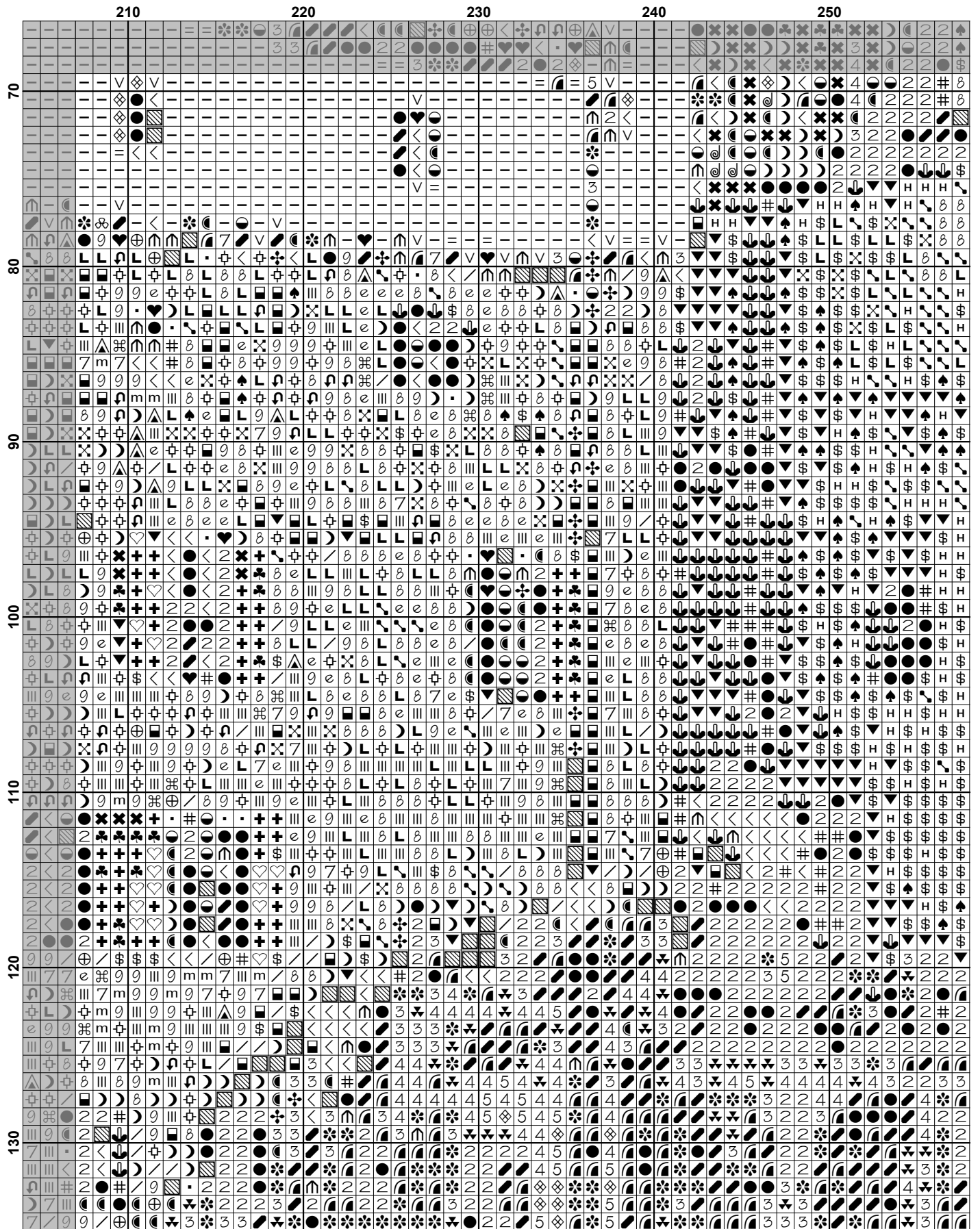


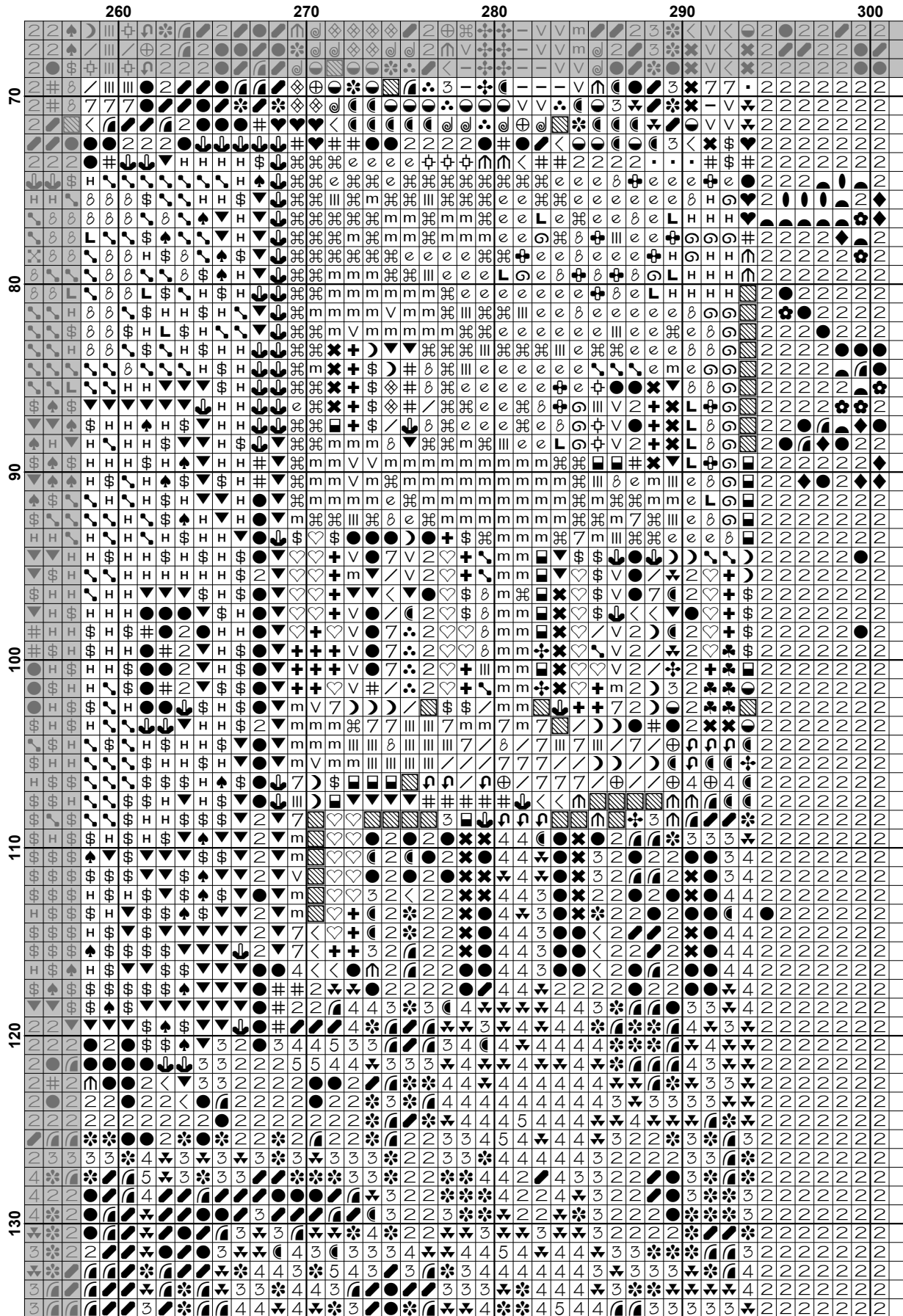


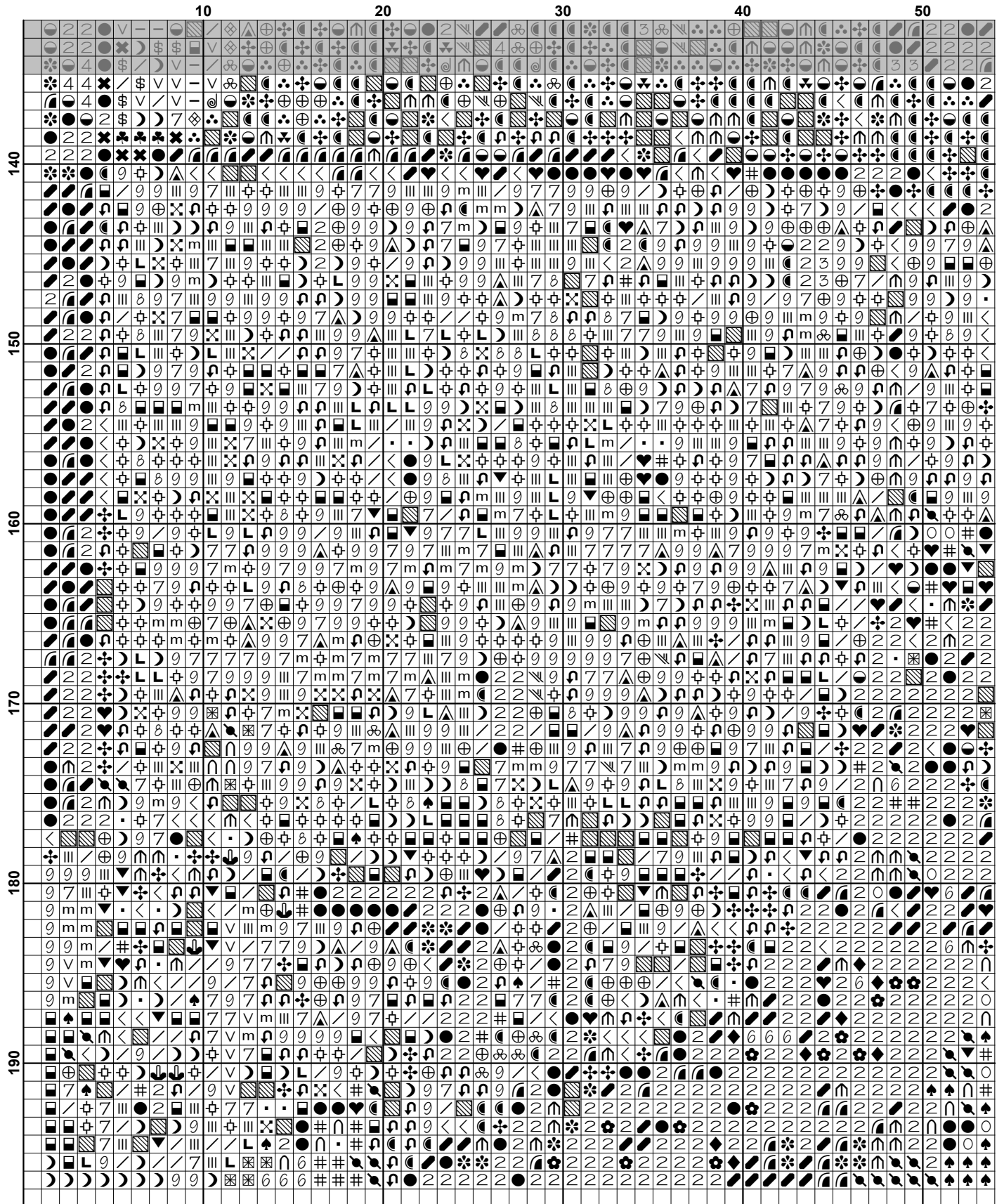


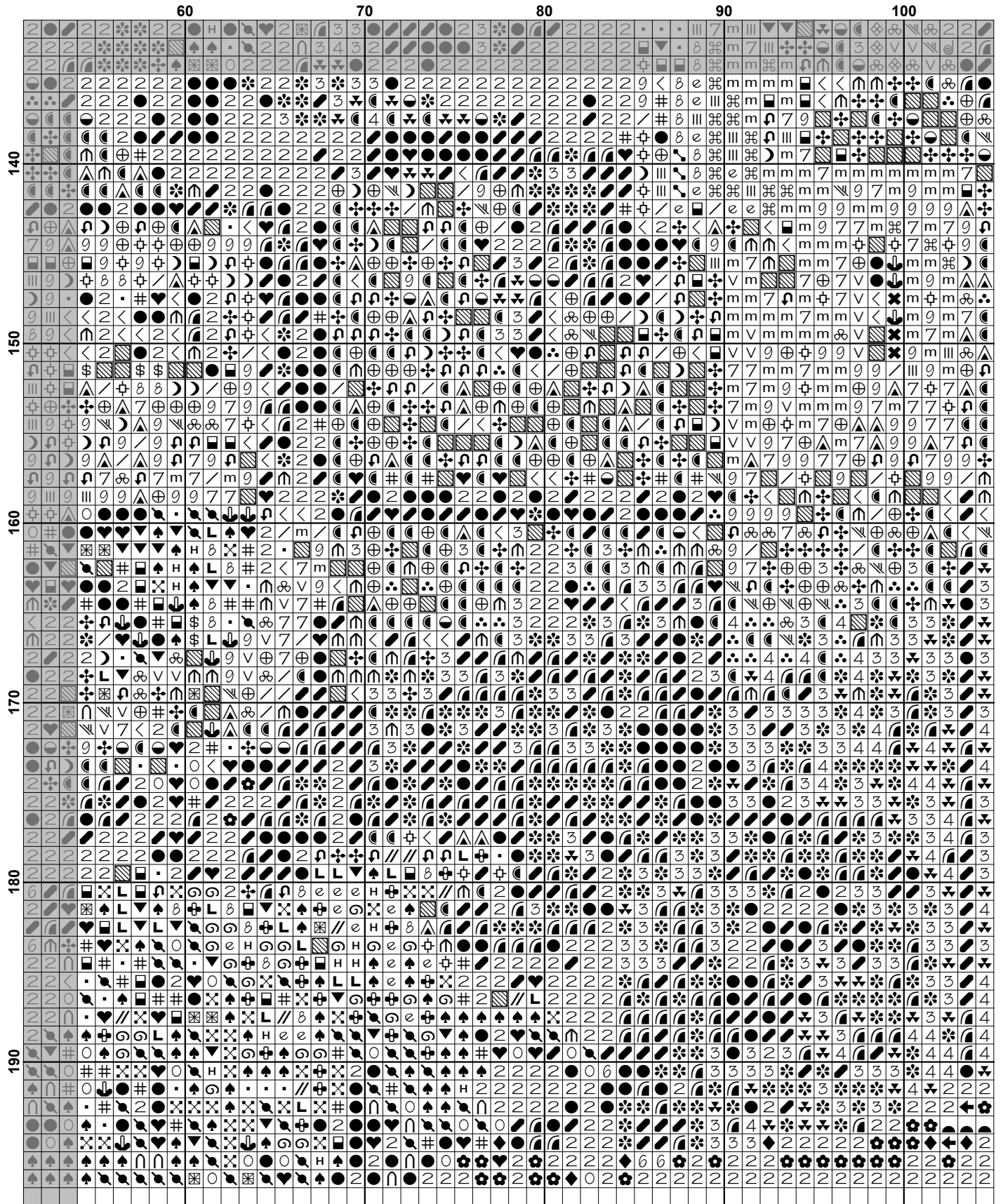




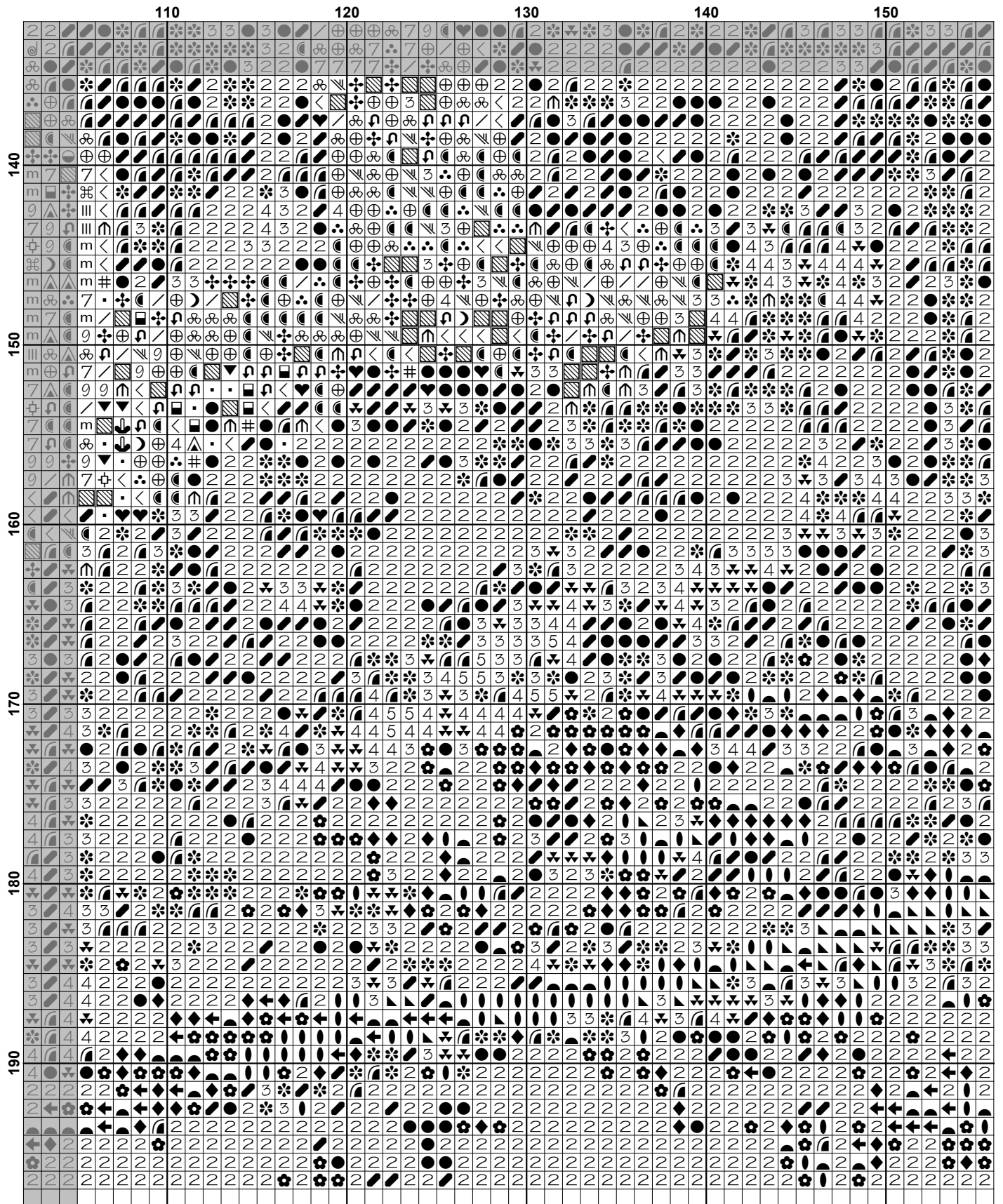


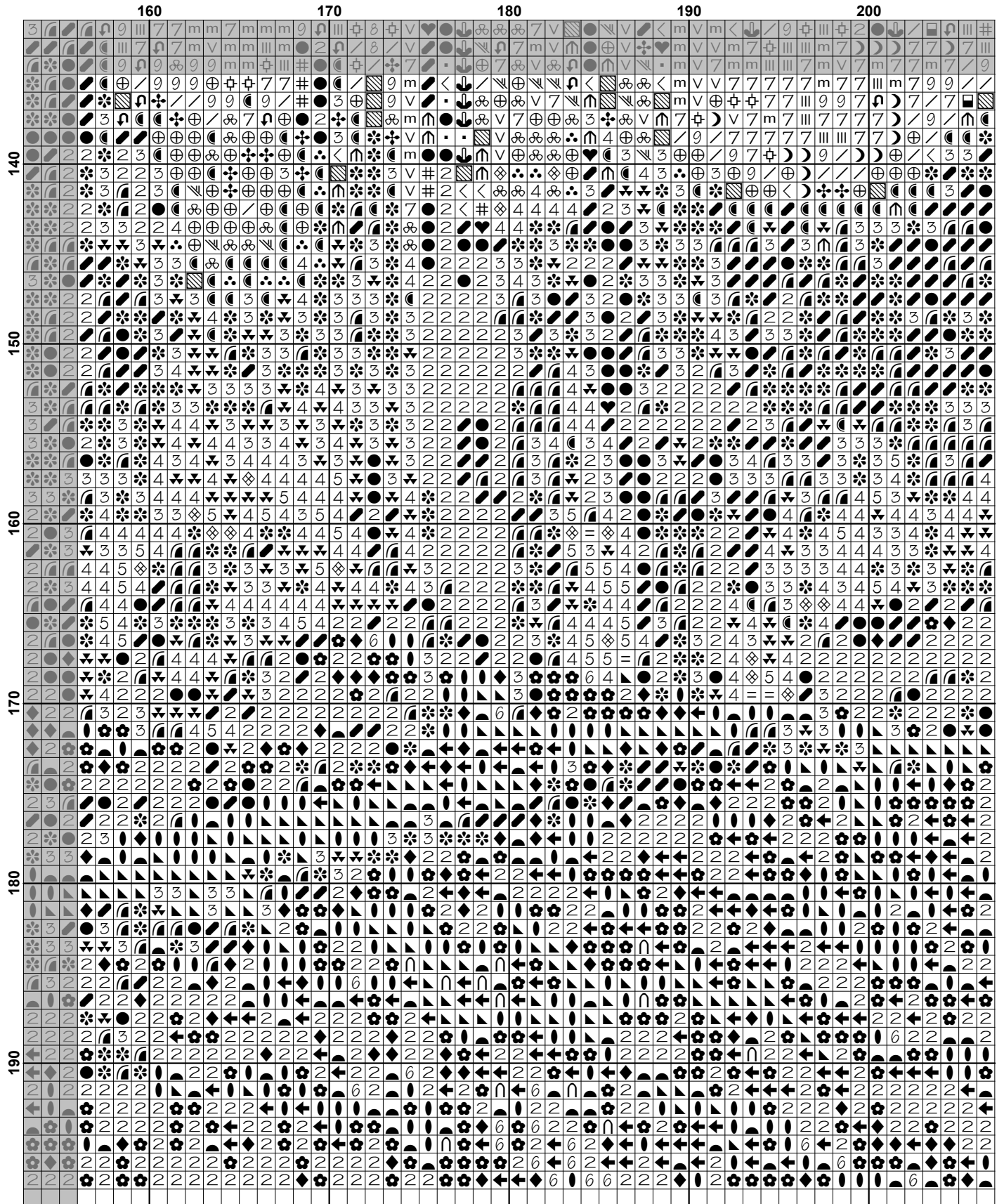


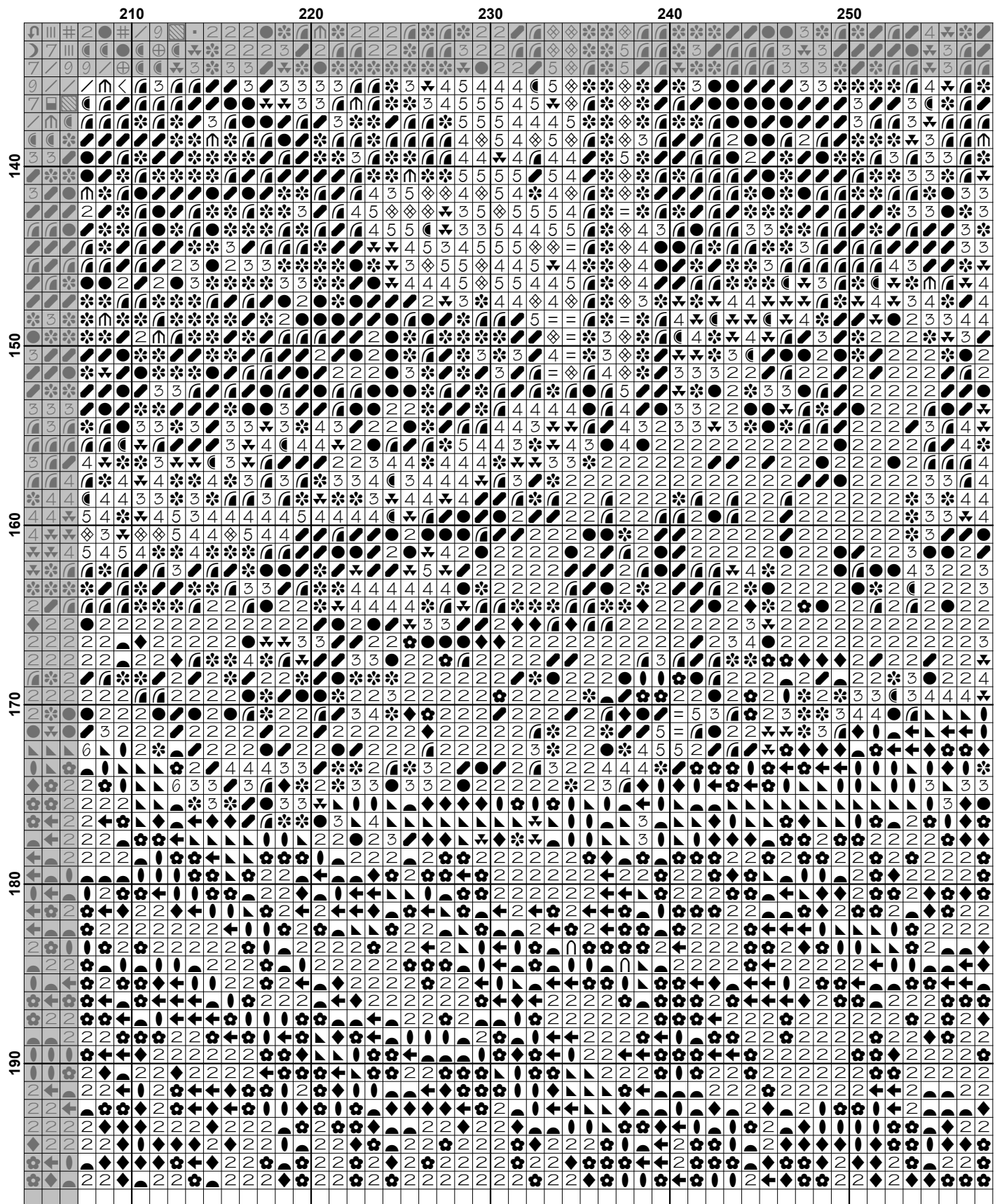


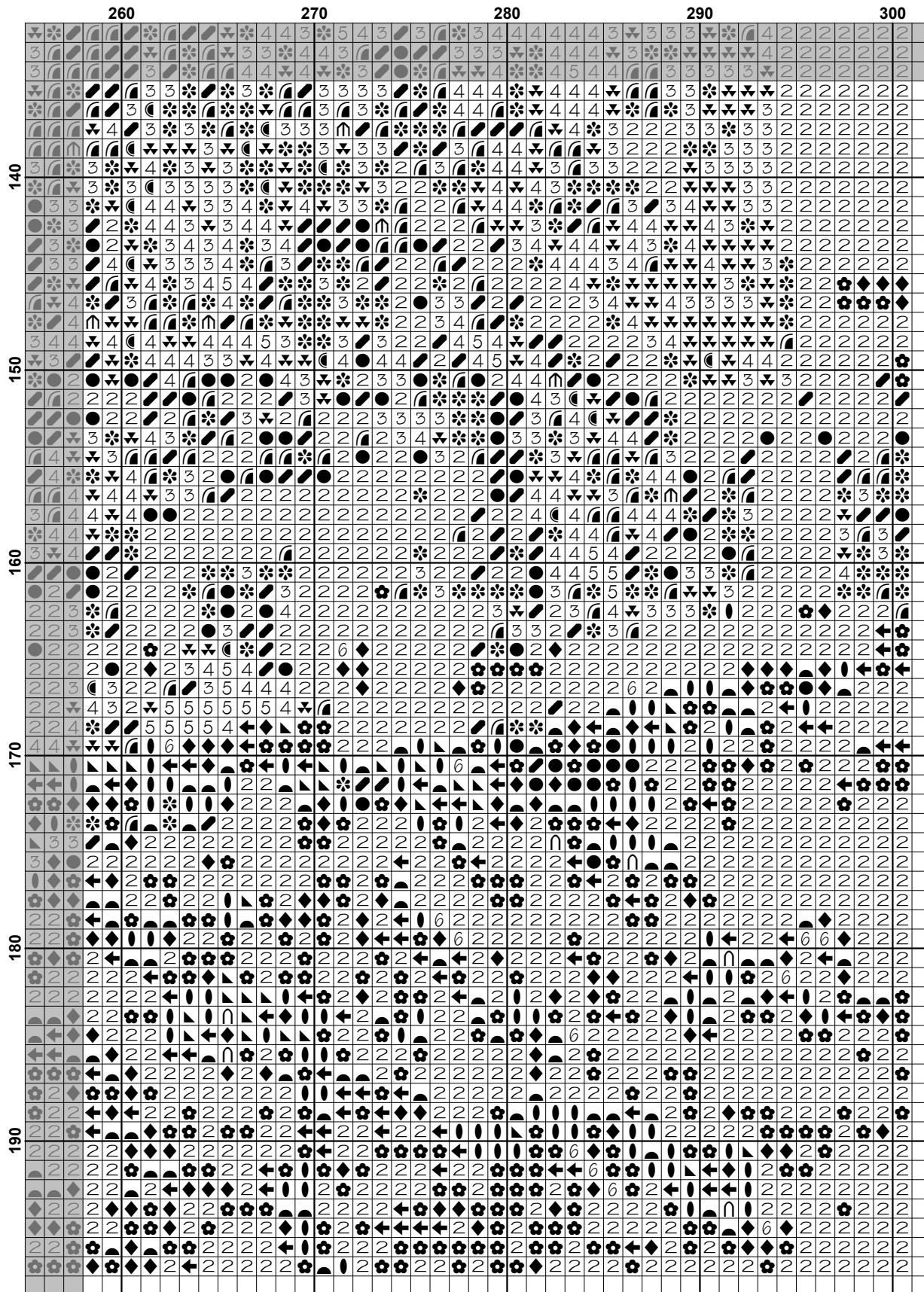












**Pattern Name:** Eltz Castle  
**Designed By:** Image by Tom - Pixabay  
**Company:** Artecy Cross Stitch  
**Copyright:** Copyright Artecy Cross Stitch. All rights Reserved.  
**Fabric:** Aida 14, White  
 300w X 196h Stitches  
**Size(s):** 14 Count, 21-3/8w X 14h in  
 16 Count, 18-3/4w X 12-1/4h in  
 18 Count, 16-5/8w X 10-7/8h in

**Floss Used for Full Stitches:**

Symbol	Strands	Type	Number	Color
	2	DMC	169	Pewter-LT
	2	DMC	300	Mahogany-VY DK
	2	DMC	310	Black
	2	DMC	317	Pewter Gray
	4	DMC	318	Steel Gray-LT
	2	DMC	319	Pistachio Green-VY DK
	2	DMC	367	Pistachio Green-DK
	2	DMC	370	Mustard-MD
	2	DMC	372	Mustard-LT
	2	DMC	413	Pewter Gray-DK
	3	DMC	414	Steel Gray-DK
	5	DMC	415	Pearl Gray
	2	DMC	422	Hazelnut Brown-LT
	2	DMC	469	Avocado Green
	2	DMC	471	Avocado Green-VY LT
	2	DMC	498	Christmas Red-DK
	2	DMC	505	Jade
	6	DMC	520	Fern Green-DK
	2	DMC	524	Fern Green-VY LT
	2	DMC	606	Bright Orange-Red
	2	DMC	612	Drab Brown-LT
	2	DMC	613	Drab Brown-VY LT
	2	DMC	640	Beige Gray-VY DK
	2	DMC	727	Topaz-VY LT
	2	DMC	729	Old Gold-MD
	2	DMC	730	Olive Green-VY DK
	2	DMC	734	Olive Green-LT
	9	DMC	738	Tan-VY LT
	2	DMC	747	Sky Blue-VY LT
	2	DMC	762	Pearl Gray-VY LT
	2	DMC	779	Cocoa-DK
	2	DMC	780	Topaz-UL VY DK
	2	DMC	783	Topaz-MD
	2	DMC	801	Coffee Brown-DK
	2	DMC	828	Blue-UL VY LT
	2	DMC	832	Golden Olive
	2	DMC	833	Golden Olive-LT
	2	DMC	842	Beige Brown-VY LT
	2	DMC	890	Pistachio Green-UL DK
	0	DMC	936	Avocado Green-VY DK
	2	DMC	938	Coffee Brown-UL DK
	7	DMC	945	Tawny
	2	DMC	977	Golden Brown-LT
	2	DMC	986	Forest Green-VY DK
	2	DMC	989	Forest Green

Symbol	Strands	Type	Number	Color
	2	DMC	3012	Khaki Green-MD
	2	DMC	3031	Mocha Brown-VY DK
	2	DMC	3041	Antique Violet-MD
	2	DMC	3042	Antique Violet-LT
	2	DMC	3064	Desert Sand
	2	DMC	3078	Golden Yellow-VY LT
	2	DMC	3340	Apricot-MD
	2	DMC	3371	Black Brown
	2	DMC	3705	Melon-DK
	2	DMC	3743	Antique Violet-VY LT
	2	DMC	3761	Sky Blue-LT
	2	DMC	3770	Tawny-VY LT
	2	DMC	3771	Terra Cotta-UL VY LT
	2	DMC	3776	Mahogany-LT
	2	DMC	3787	Brown Gray-DK
	2	DMC	3790	Beige Gray-UL DK
	2	DMC	3799	Pewter Gray-VY DK
	2	DMC	3819	Moss Green-LT
	2	DMC	3820	Straw-DK
	2	DMC	3822	Straw-LT
	2	DMC	3827	Golden Brown-Pale
	2	DMC	3856	Mahogany-UL VY LT
	2	DMC	3861	Cocoa-LT
	2	DMC	3864	Mocha Beige-LT
	2	DMC	3865	Winter White

**Notes:**

The middle of this pattern can be found on page 9 and is 151 stitches across and 99 stitches down.

Pattern layout using page numbers in top left.




















1 2 3 4 5 6  
 7 8 9 10 11 12  
 13 14 15 16 17 18

**Usage Summary**

**Strands Per Skein:** 6

**Skein Length:** 313.0 in

Type	Number	Full	Half	Quarter	Petite	Back(in)	Str(in)	Spec(in)	French	Bead	Skein Est.
DMC 169	169	1035	0	0	0	0.0	0.0	0.0	0	0	1.000
DMC 300	300	404	0	0	0	0.0	0.0	0.0	0	0	1.000
DMC 310	310	9464	0	0	0	0.0	0.0	0.0	0	0	5.000
DMC 317	317	2476	0	0	0	0.0	0.0	0.0	0	0	2.000
DMC 318	318	952	0	0	0	0.0	0.0	0.0	0	0	1.000
DMC 319	319	662	0	0	0	0.0	0.0	0.0	0	0	1.000
DMC 367	367	606	0	0	0	0.0	0.0	0.0	0	0	1.000
DMC 370	370	639	0	0	0	0.0	0.0	0.0	0	0	1.000
DMC 372	372	282	0	0	0	0.0	0.0	0.0	0	0	1.000
DMC 413	413	2420	0	0	0	0.0	0.0	0.0	0	0	2.000
DMC 414	414	1769	0	0	0	0.0	0.0	0.0	0	0	1.000
DMC 415	415	357	0	0	0	0.0	0.0	0.0	0	0	1.000
DMC 422	422	879	0	0	0	0.0	0.0	0.0	0	0	1.000
DMC 469	469	570	0	0	0	0.0	0.0	0.0	0	0	1.000
DMC 471	471	281	0	0	0	0.0	0.0	0.0	0	0	1.000
DMC 498	498	150	0	0	0	0.0	0.0	0.0	0	0	1.000
DMC 505	505	405	0	0	0	0.0	0.0	0.0	0	0	1.000
DMC 520	520	323	0	0	0	0.0	0.0	0.0	0	0	1.000
DMC 524	524	353	0	0	0	0.0	0.0	0.0	0	0	1.000
DMC 606	606	46	0	0	0	0.0	0.0	0.0	0	0	1.000
DMC 612	612	657	0	0	0	0.0	0.0	0.0	0	0	1.000
DMC 613	613	290	0	0	0	0.0	0.0	0.0	0	0	1.000
DMC 640	640	663	0	0	0	0.0	0.0	0.0	0	0	1.000
DMC 727	727	174	0	0	0	0.0	0.0	0.0	0	0	1.000
DMC 729	729	370	0	0	0	0.0	0.0	0.0	0	0	1.000
DMC 730	730	831	0	0	0	0.0	0.0	0.0	0	0	1.000
DMC 734	734	74	0	0	0	0.0	0.0	0.0	0	0	1.000
DMC 738	738	938	0	0	0	0.0	0.0	0.0	0	0	1.000
DMC 747	747	682	0	0	0	0.0	0.0	0.0	0	0	1.000
DMC 762	762	120	0	0	0	0.0	0.0	0.0	0	0	1.000
DMC 779	779	637	0	0	0	0.0	0.0	0.0	0	0	1.000
DMC 780	780	617	0	0	0	0.0	0.0	0.0	0	0	1.000
DMC 783	783	297	0	0	0	0.0	0.0	0.0	0	0	1.000
DMC 801	801	237	0	0	0	0.0	0.0	0.0	0	0	1.000
DMC 828	828	966	0	0	0	0.0	0.0	0.0	0	0	1.000
DMC 832	832	814	0	0	0	0.0	0.0	0.0	0	0	1.000
DMC 833	833	420	0	0	0	0.0	0.0	0.0	0	0	1.000
DMC 842	842	439	0	0	0	0.0	0.0	0.0	0	0	1.000
DMC 890	890	1499	0	0	0	0.0	0.0	0.0	0	0	1.000
DMC 936	936	633	0	0	0	0.0	0.0	0.0	0	0	1.000
DMC 938	938	577	0	0	0	0.0	0.0	0.0	0	0	1.000
DMC 945	945	517	0	0	0	0.0	0.0	0.0	0	0	1.000
DMC 977	977	166	0	0	0	0.0	0.0	0.0	0	0	1.000
DMC 986	986	407	0	0	0	0.0	0.0	0.0	0	0	1.000
DMC 989	989	296	0	0	0	0.0	0.0	0.0	0	0	1.000
DMC 3012	3012	485	0	0	0	0.0	0.0	0.0	0	0	1.000
DMC 3031	3031	416	0	0	0	0.0	0.0	0.0	0	0	1.000
DMC 3041	3041	439	0	0	0	0.0	0.0	0.0	0	0	1.000
DMC 3042	3042	361	0	0	0	0.0	0.0	0.0	0	0	1.000
DMC 3064	3064	470	0	0	0	0.0	0.0	0.0	0	0	1.000
DMC 3078	3078	482	0	0	0	0.0	0.0	0.0	0	0	1.000

Type	Number	Full	Half	Quarter	Petite	Back(in)	Str(in)	Spec(in)	French	Bead	Skein Est.
 DMC	3340	76	0	0	0	0.0	0.0	0.0	0	0	1.000
 DMC	3371	3005	0	0	0	0.0	0.0	0.0	0	0	2.000
 DMC	3705	135	0	0	0	0.0	0.0	0.0	0	0	1.000
 DMC	3743	268	0	0	0	0.0	0.0	0.0	0	0	1.000
 DMC	3761	5104	0	0	0	0.0	0.0	0.0	0	0	3.000
 DMC	3770	315	0	0	0	0.0	0.0	0.0	0	0	1.000
 DMC	3771	375	0	0	0	0.0	0.0	0.0	0	0	1.000
 DMC	3776	334	0	0	0	0.0	0.0	0.0	0	0	1.000
 DMC	3787	807	0	0	0	0.0	0.0	0.0	0	0	1.000
 DMC	3790	1005	0	0	0	0.0	0.0	0.0	0	0	1.000
 DMC	3799	3014	0	0	0	0.0	0.0	0.0	0	0	2.000
 DMC	3819	225	0	0	0	0.0	0.0	0.0	0	0	1.000
 DMC	3820	161	0	0	0	0.0	0.0	0.0	0	0	1.000
 DMC	3822	290	0	0	0	0.0	0.0	0.0	0	0	1.000
 DMC	3827	387	0	0	0	0.0	0.0	0.0	0	0	1.000
 DMC	3856	540	0	0	0	0.0	0.0	0.0	0	0	1.000
 DMC	3861	1195	0	0	0	0.0	0.0	0.0	0	0	1.000
 DMC	3864	769	0	0	0	0.0	0.0	0.0	0	0	1.000
 DMC	3865	748	0	0	0	0.0	0.0	0.0	0	0	1.000