

## End of a Long Day

Adapted from a Artwork by John Frederick Herring Jr



Cross Stitch Design by Tereena Clarke.

Completed Size = 300w X 197h Stitches

14 Count, 21.5w X 14.5h inches

16 Count, 19w X 12.5h inches

18 Count, 17w X 11h inches

Uses 71 DMC cotton colours. Only full cross stitches are used in this pattern.

# *Pattern Instructions*

\* This pattern can be worked on any fabric type, colour or count you prefer. To work out the size of the finished article, take the number of stitches wide and high and divide it by the count of your fabric (e.14,16,18 count aida etc) to get the size in inches. Times it by 2.54 to get centimetres. We have the sizes in inches shown on the previous page. Also leave at least a few inches of fabric around each side of the design to assist in framing. The higher the fabric count the smaller the completed project will be.

\* To put the pattern together look in the top and bottom corners. The page numbers in brackets show which page number it joins up to. Page 1 always starts at the top left hand side of the pattern. Our pages also have a shaded grey section. This indicates a 3 row overlap from adjoining pages to assist with reading the pattern. PLEASE DO NOT RESTITCH THIS AREA.

\* You should begin at the centre of the pattern. To find the centre of the pattern it is just a matter of laying the pattern out and locating the arrows at the top and left hand side of the patterns, they are determined by dividing the stitch numbers wide and high in half. Where the two points meet in the middle, that is the centre.

\* If you need more assistance to find the middle of your pattern or the page layout, please see the notes section on the colour symbol chart. The easiest way to stitch this pattern, as it has multiple pages, is to stitch one page at a time.

\* We suggest using two strands of floss for each stitch and one strand for backstitching if the pattern calls for it.

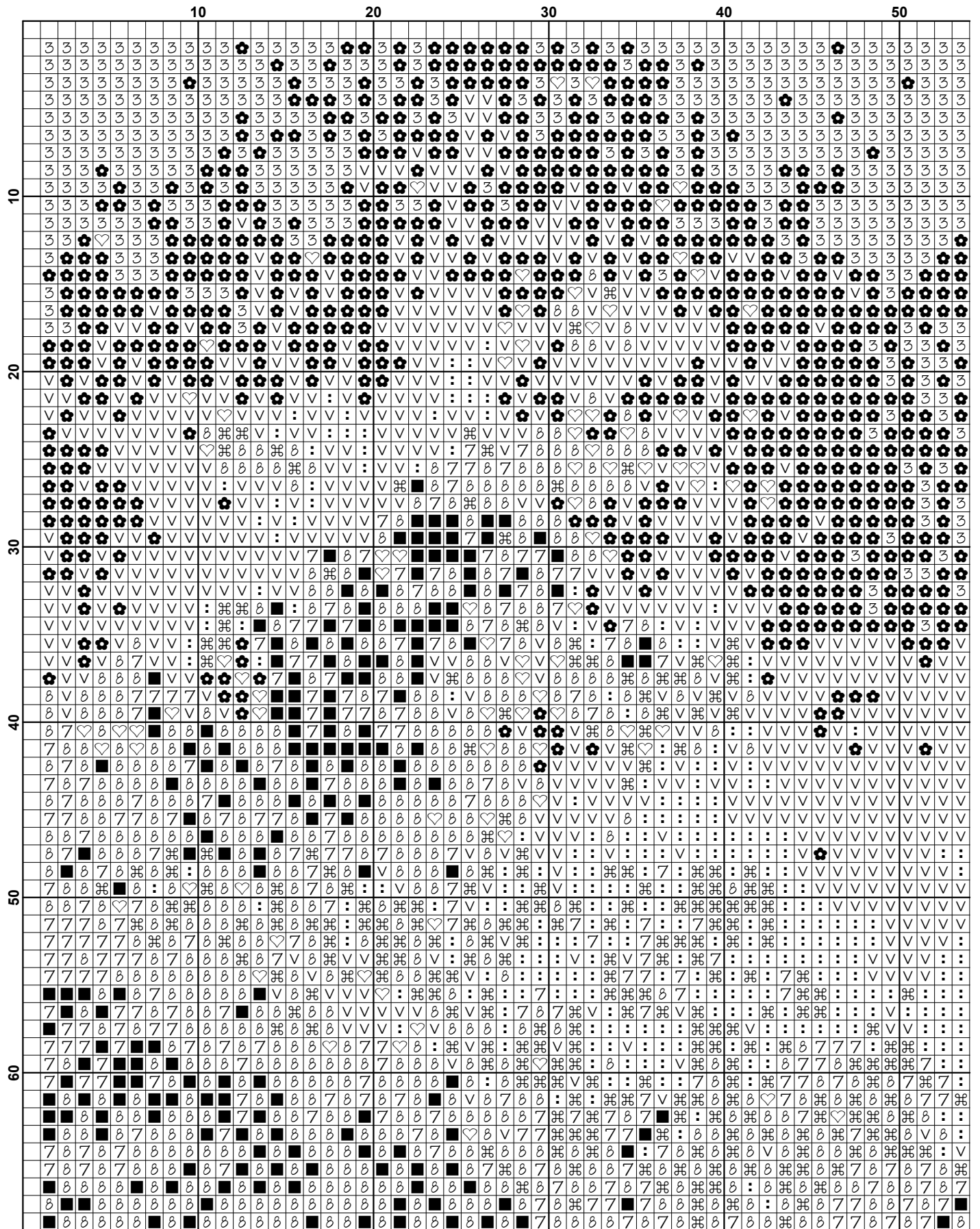
We hope you enjoy stitching our pattern.

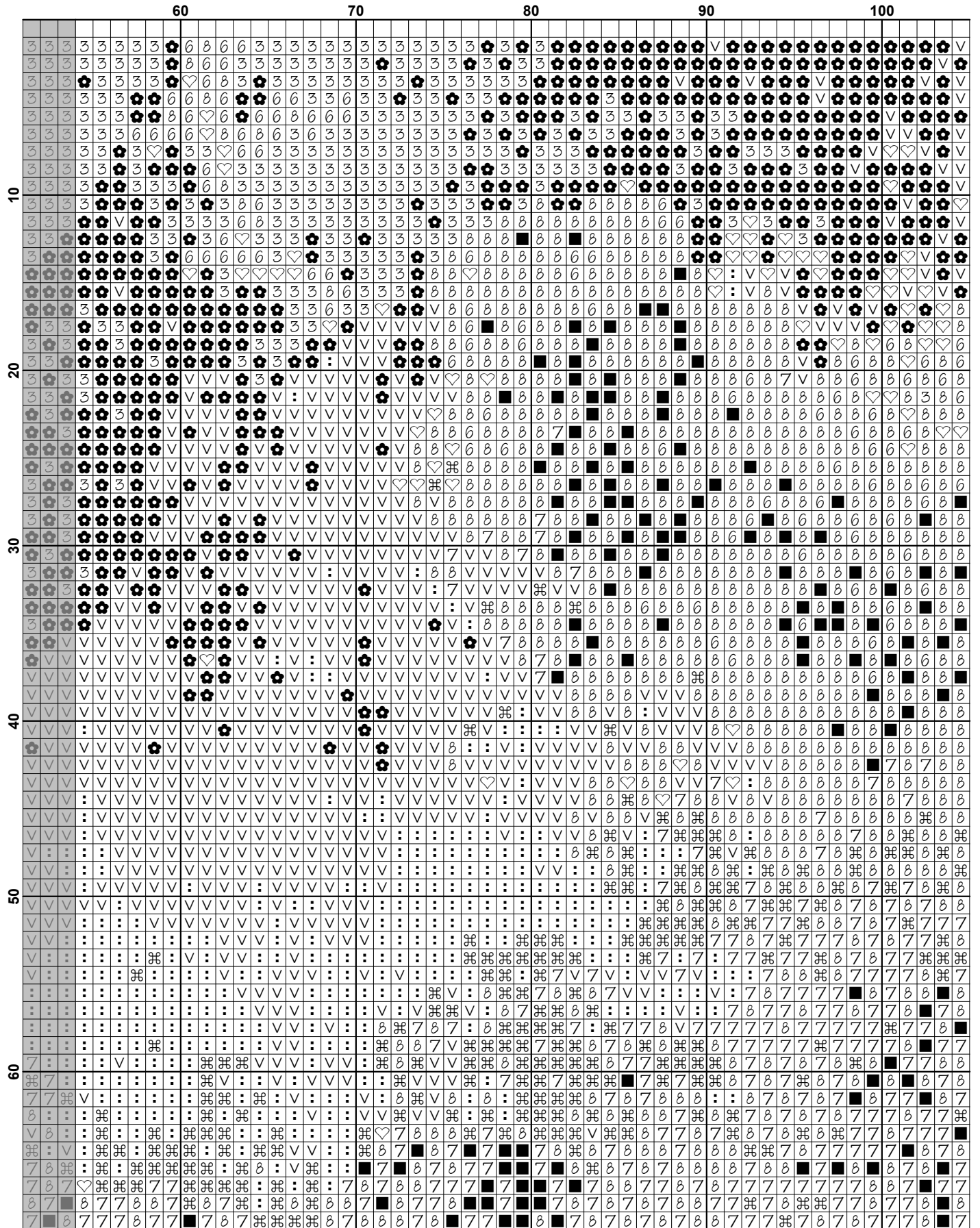
Thanks and Best Wishes  
Tereena Clarke

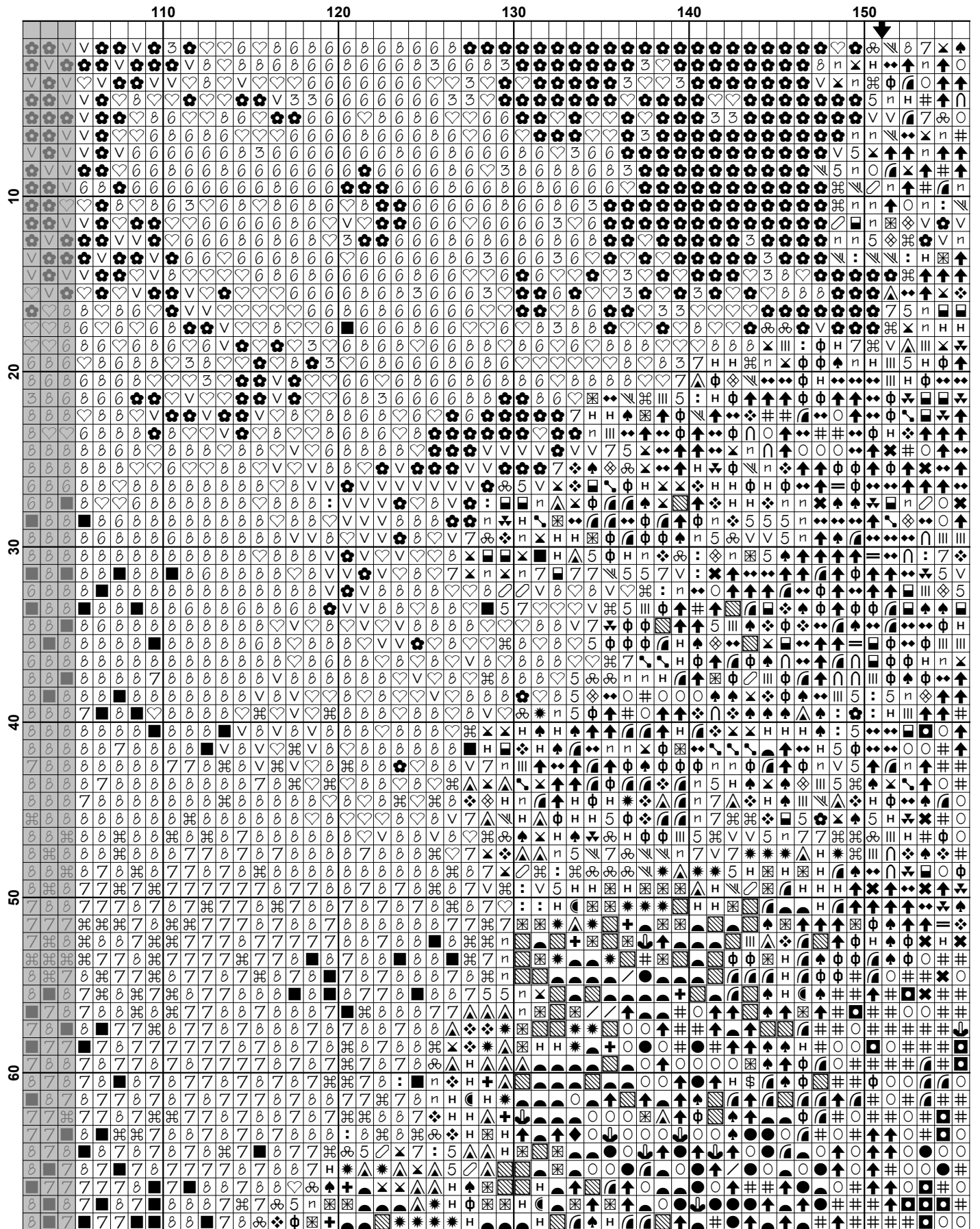
Artecy Cross Stitch  
Po Box 3474  
Tuggerah, NSW 2259  
Australia

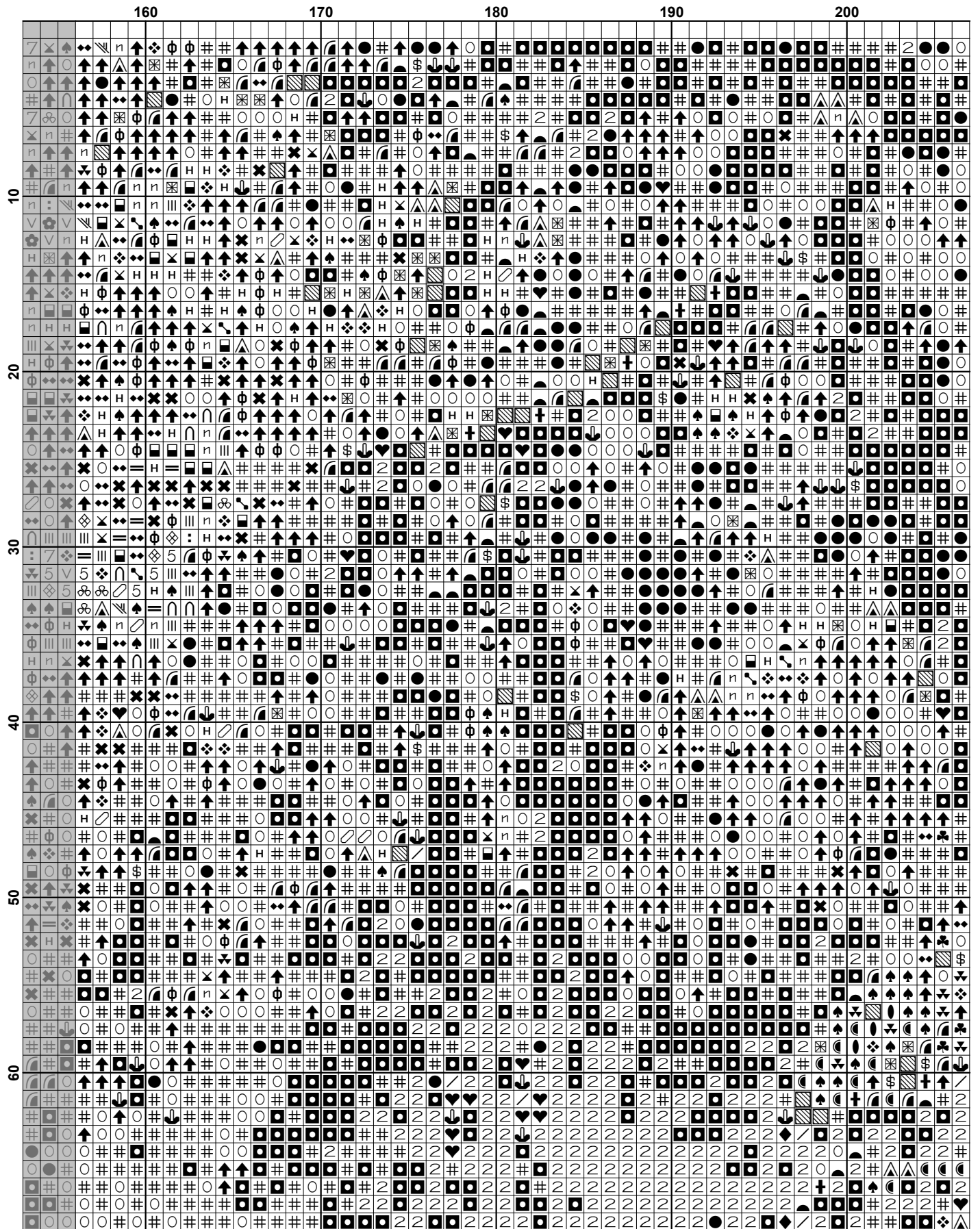
Website: [www.artecy.com](http://www.artecy.com)  
Email: [artecy@artecy.com](mailto:artecy@artecy.com) or [sls@comcen.com.au](mailto:sls@comcen.com.au)

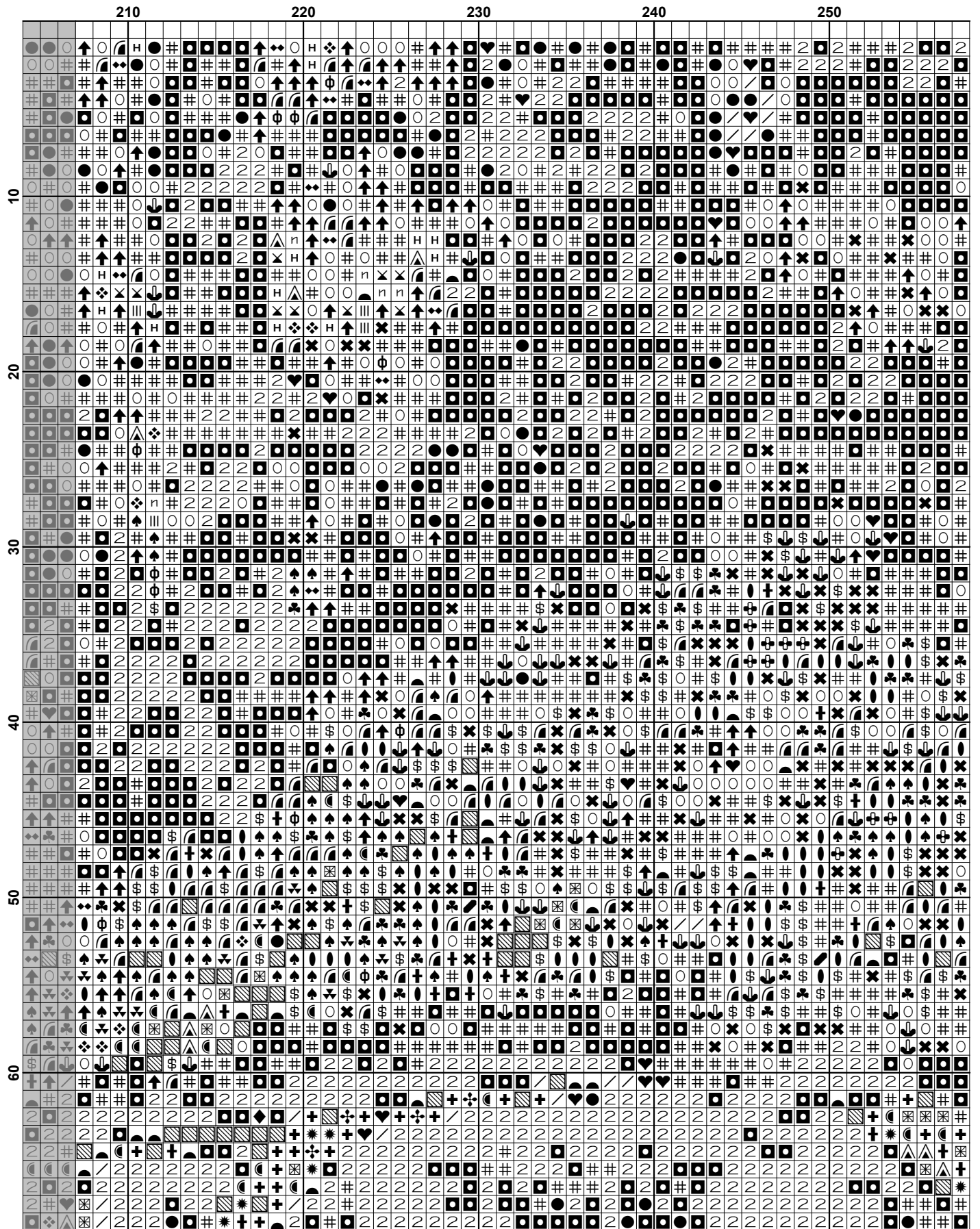
\*Patterns are strictly for personal use only. It is against our copyright to make kits for sale from our designs or to sell, copy or redistribute this pattern in any form. You may not upload our patterns to any internet forums or groups or any other website. You may make 1 copy of this pattern for a working copy for your own personal use if needed.

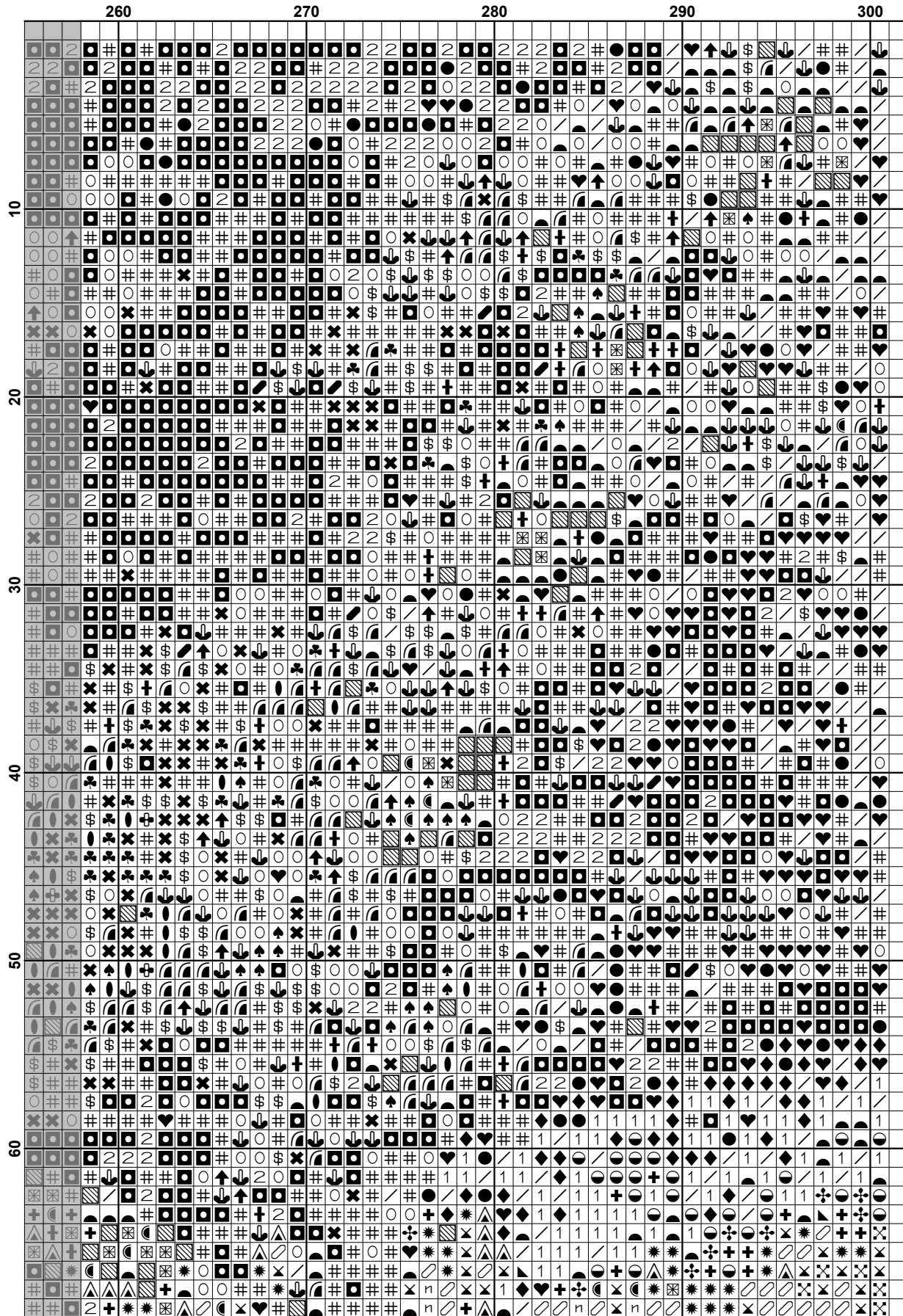




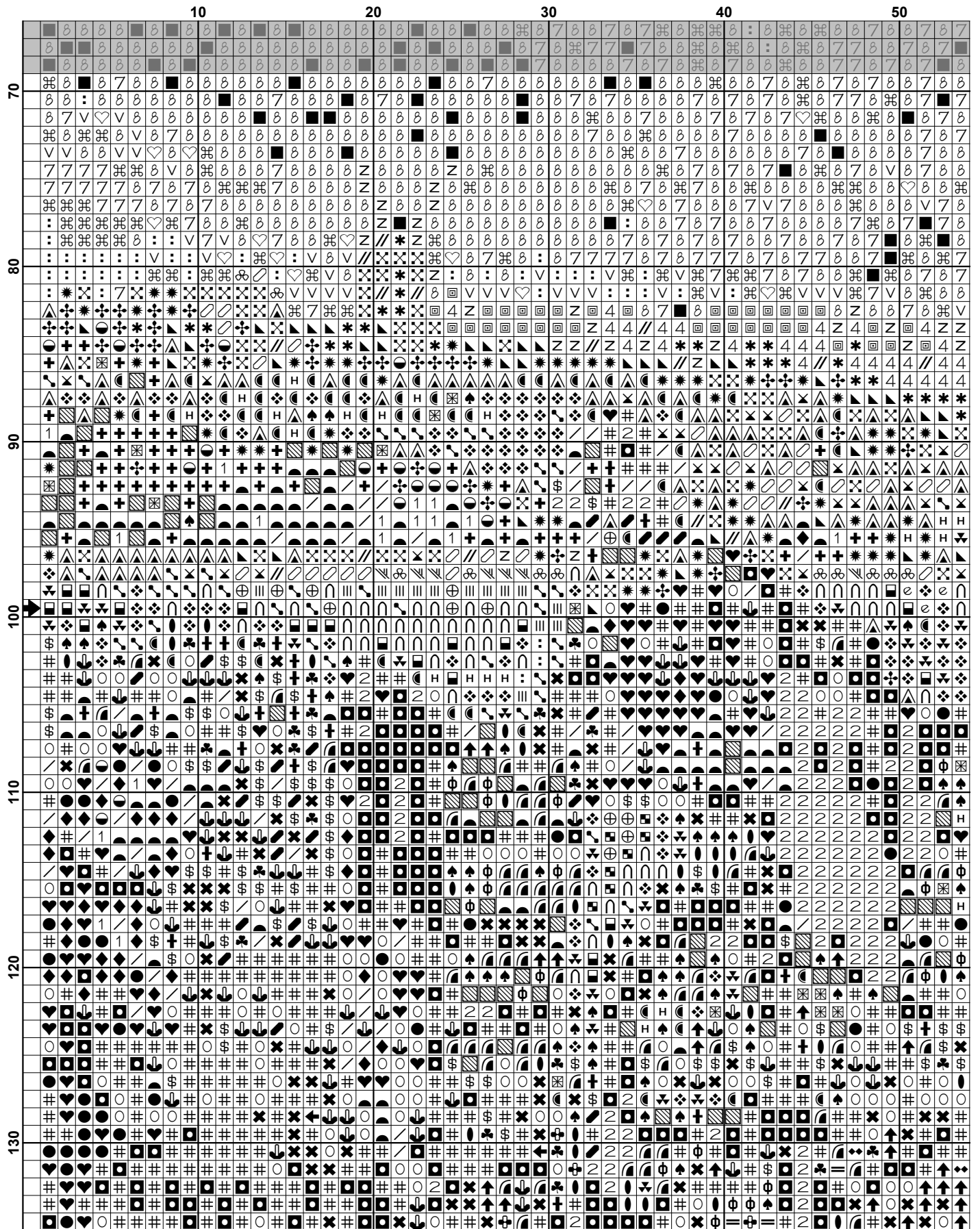


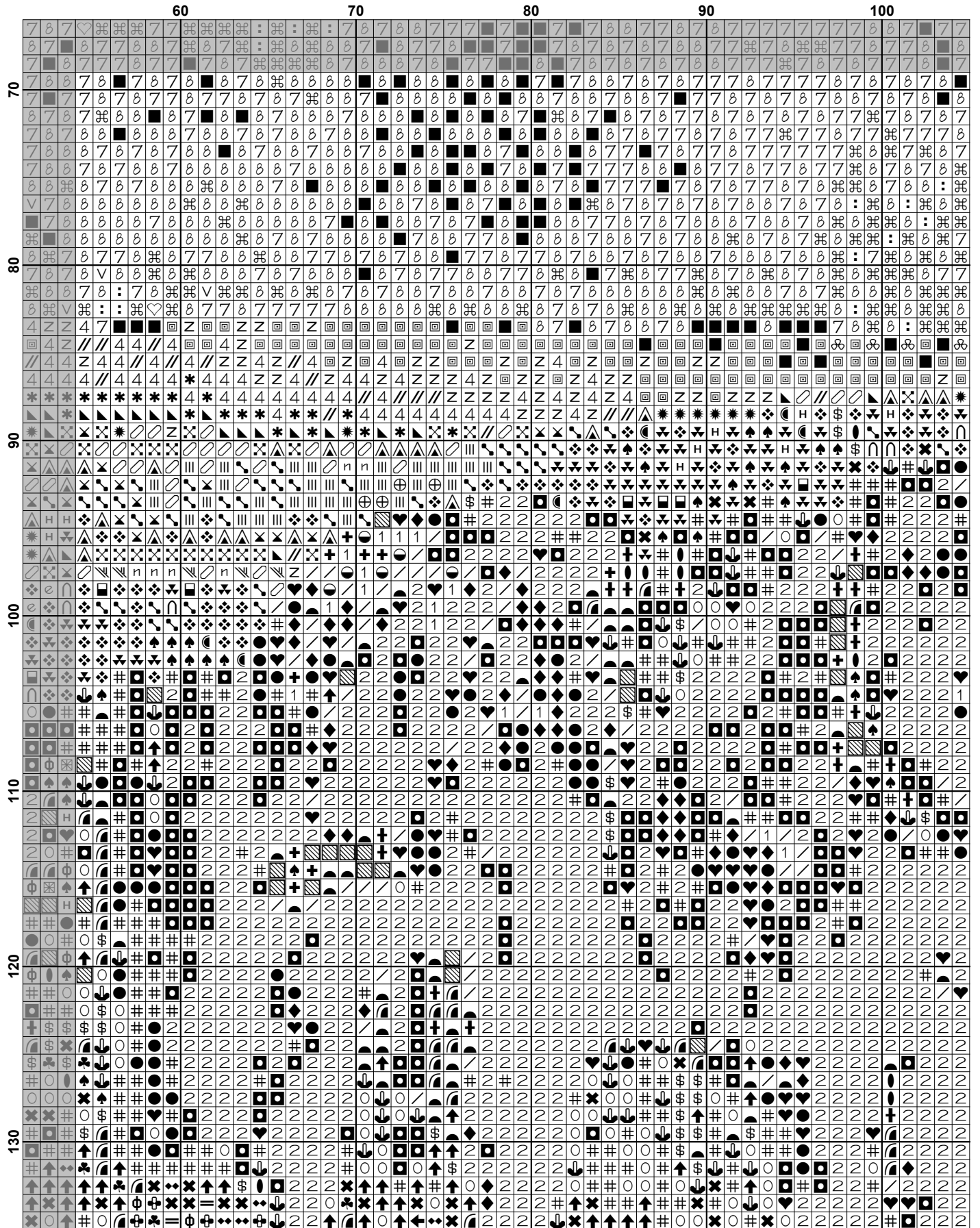


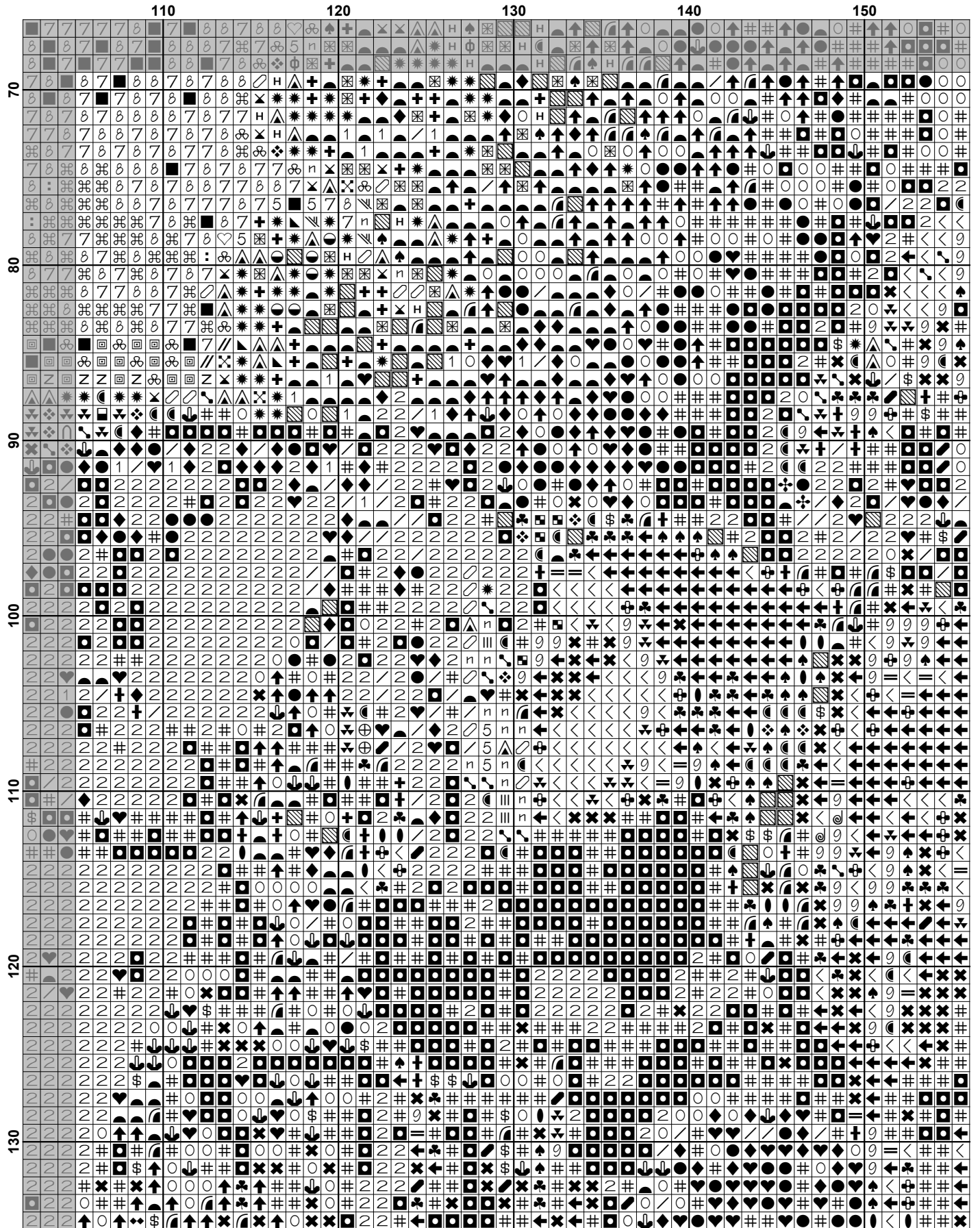


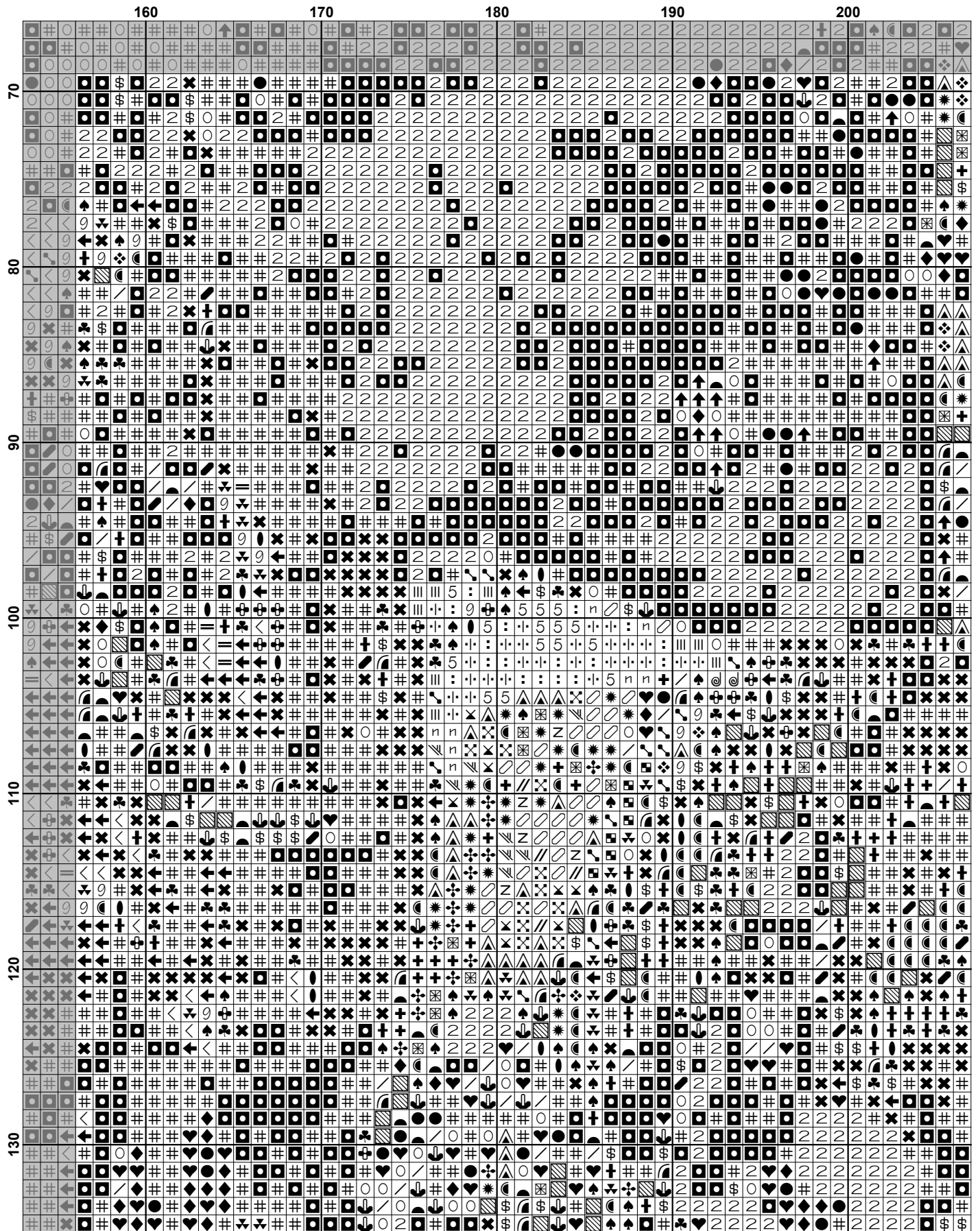


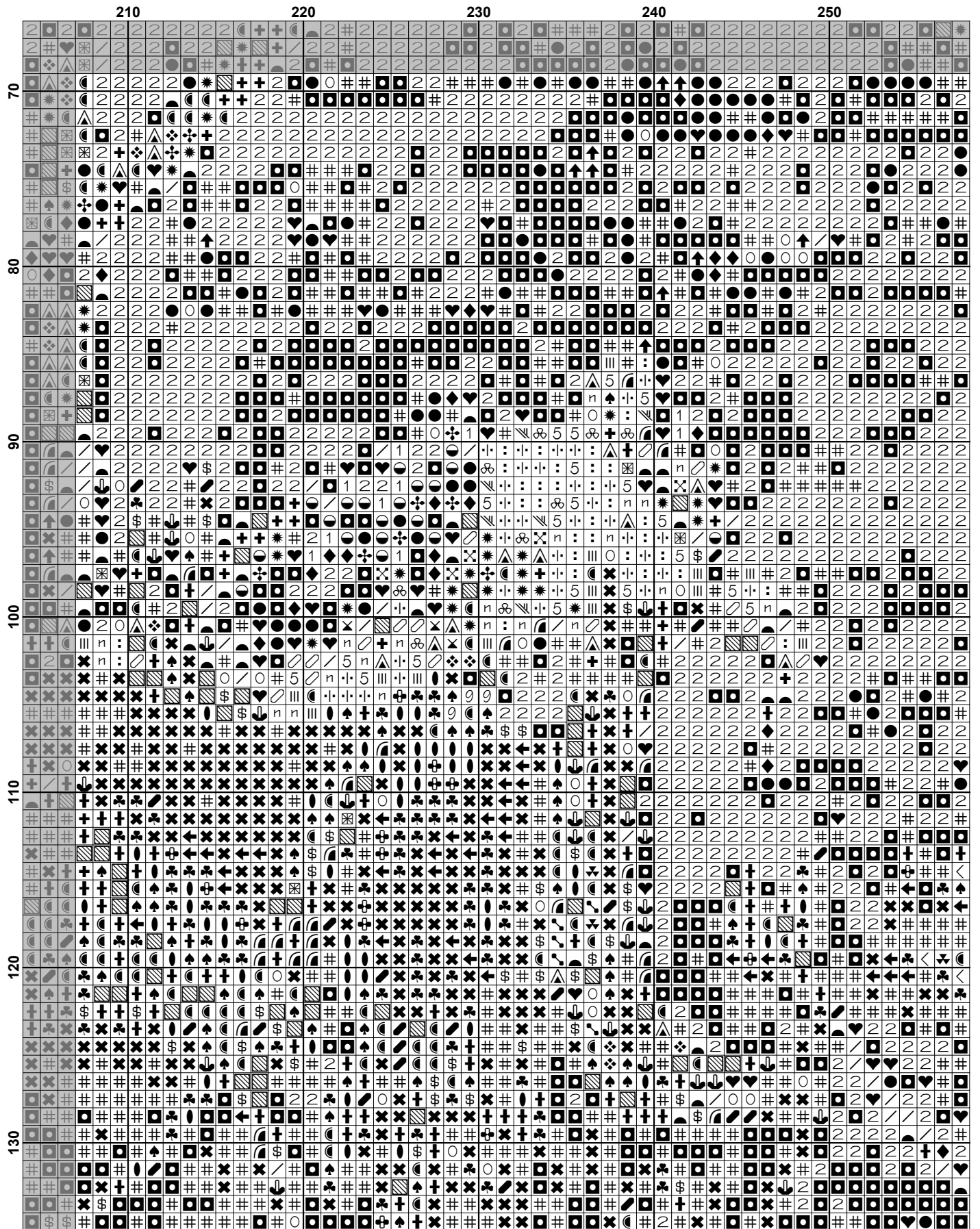


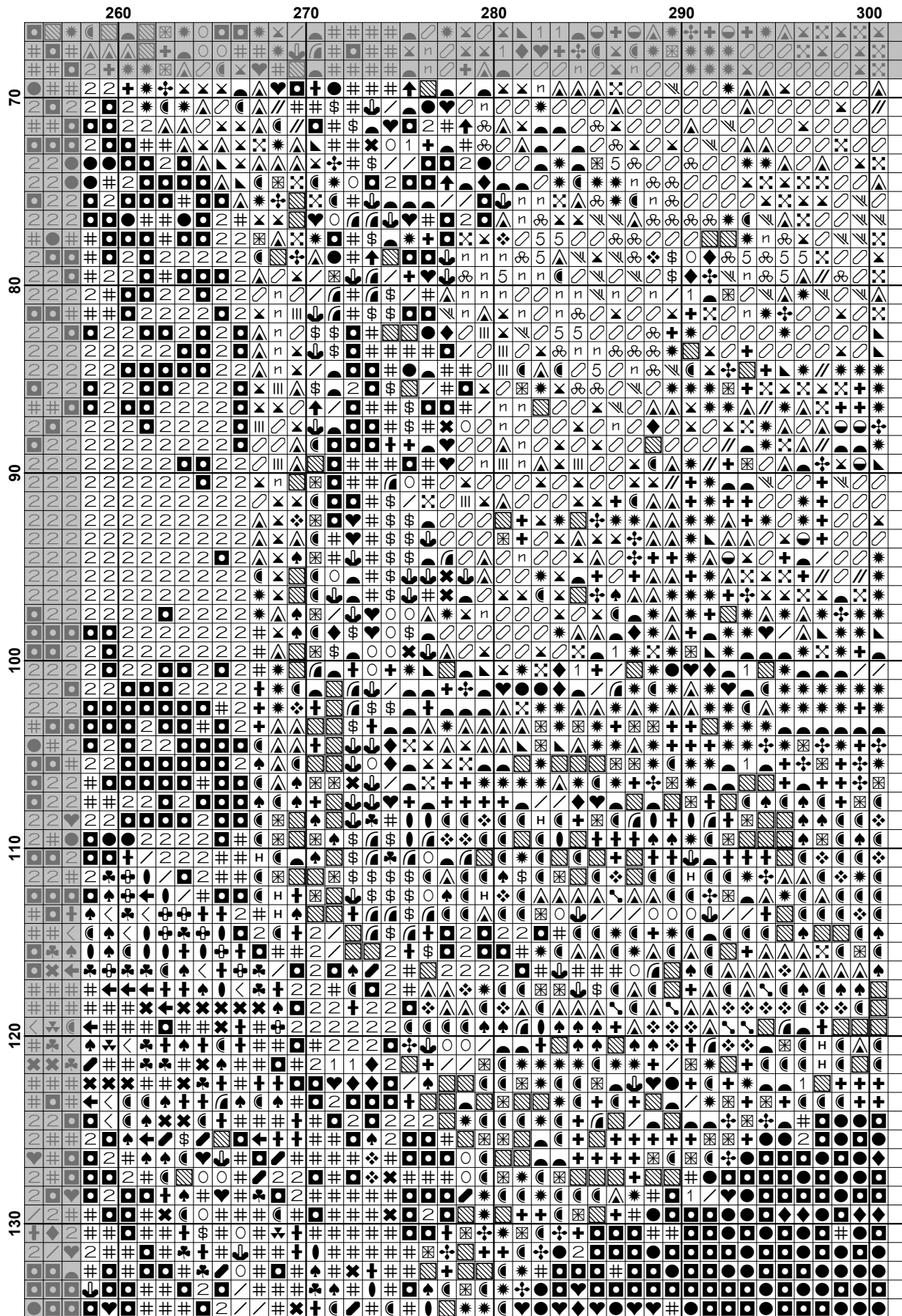


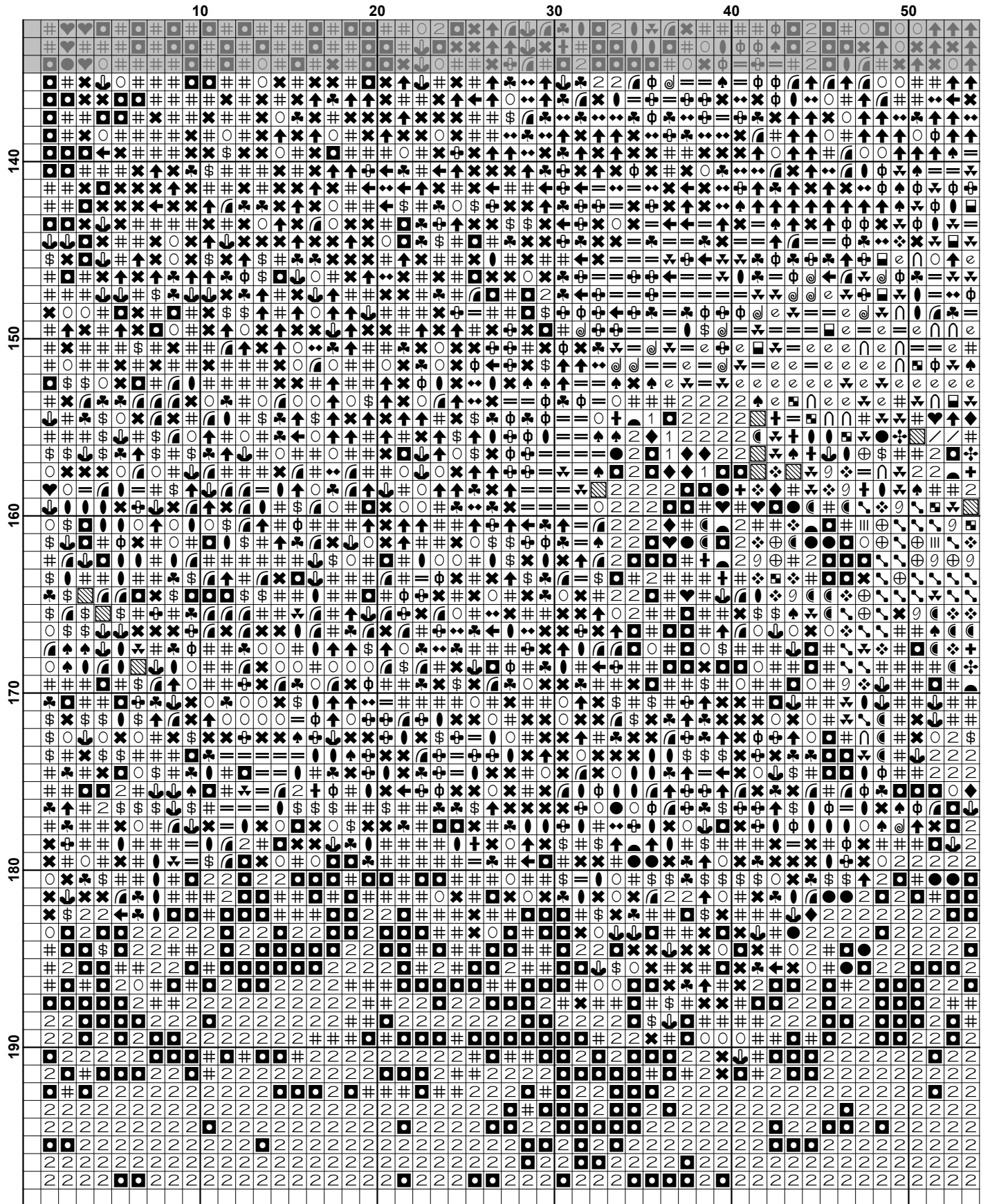


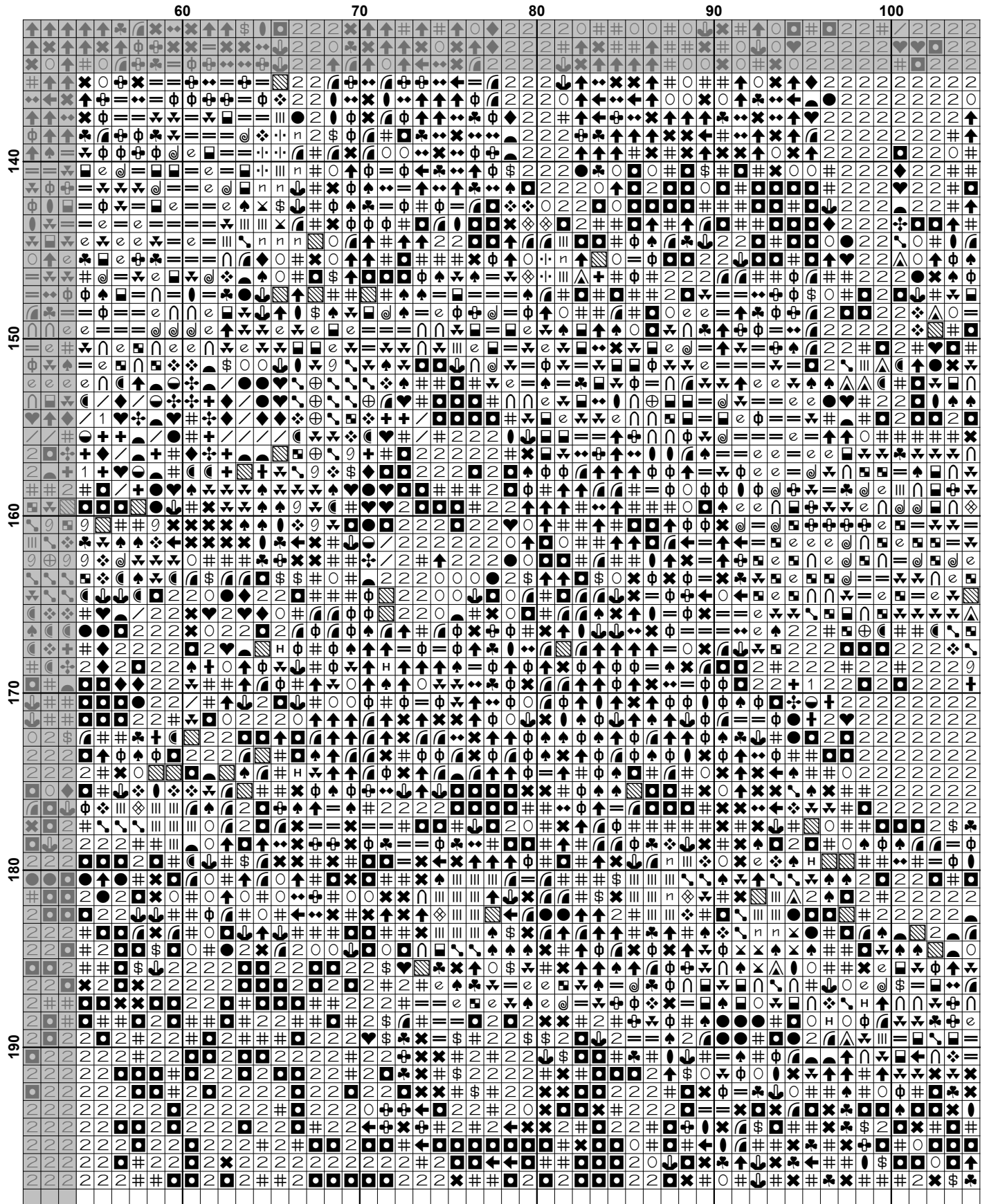




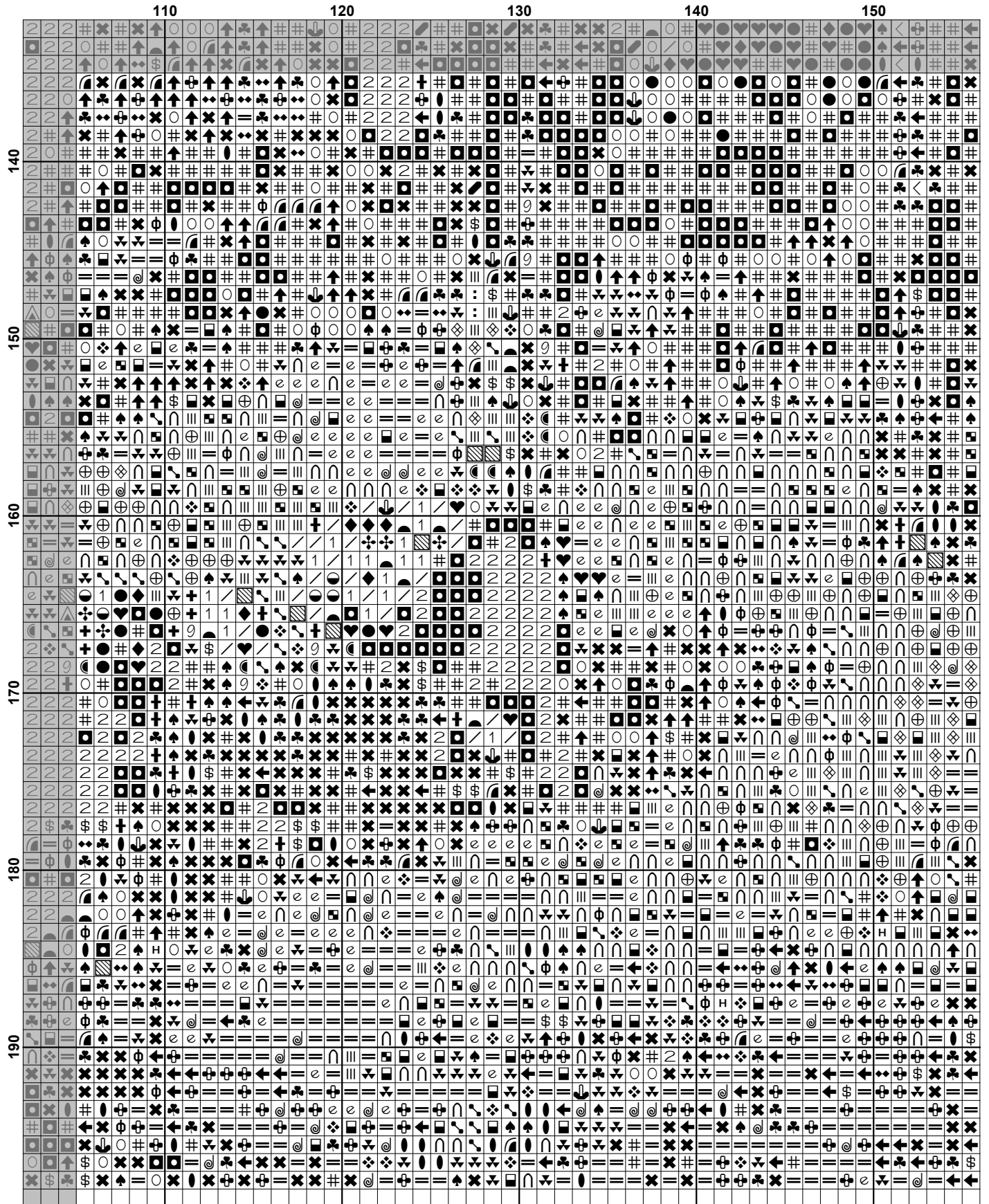


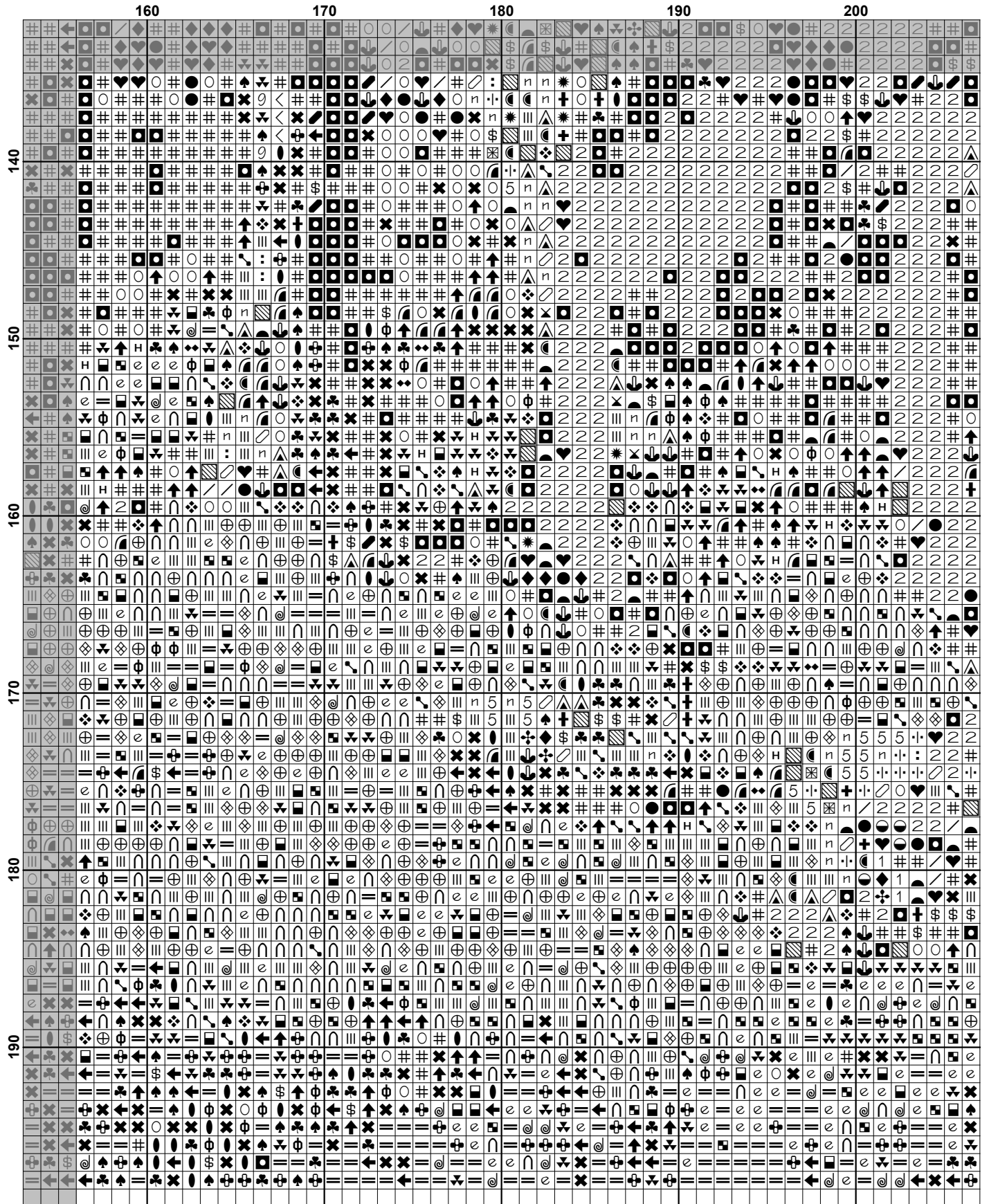


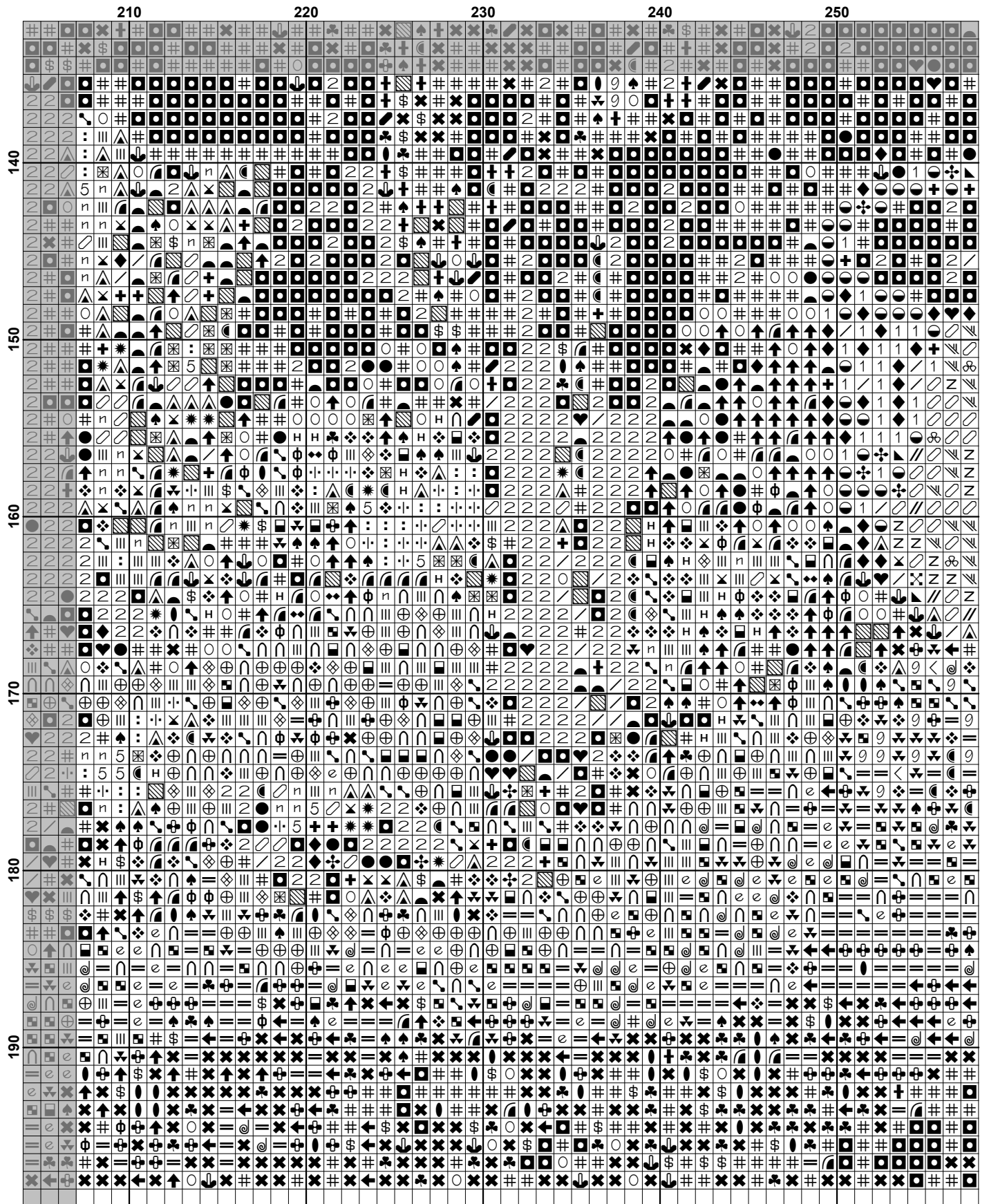


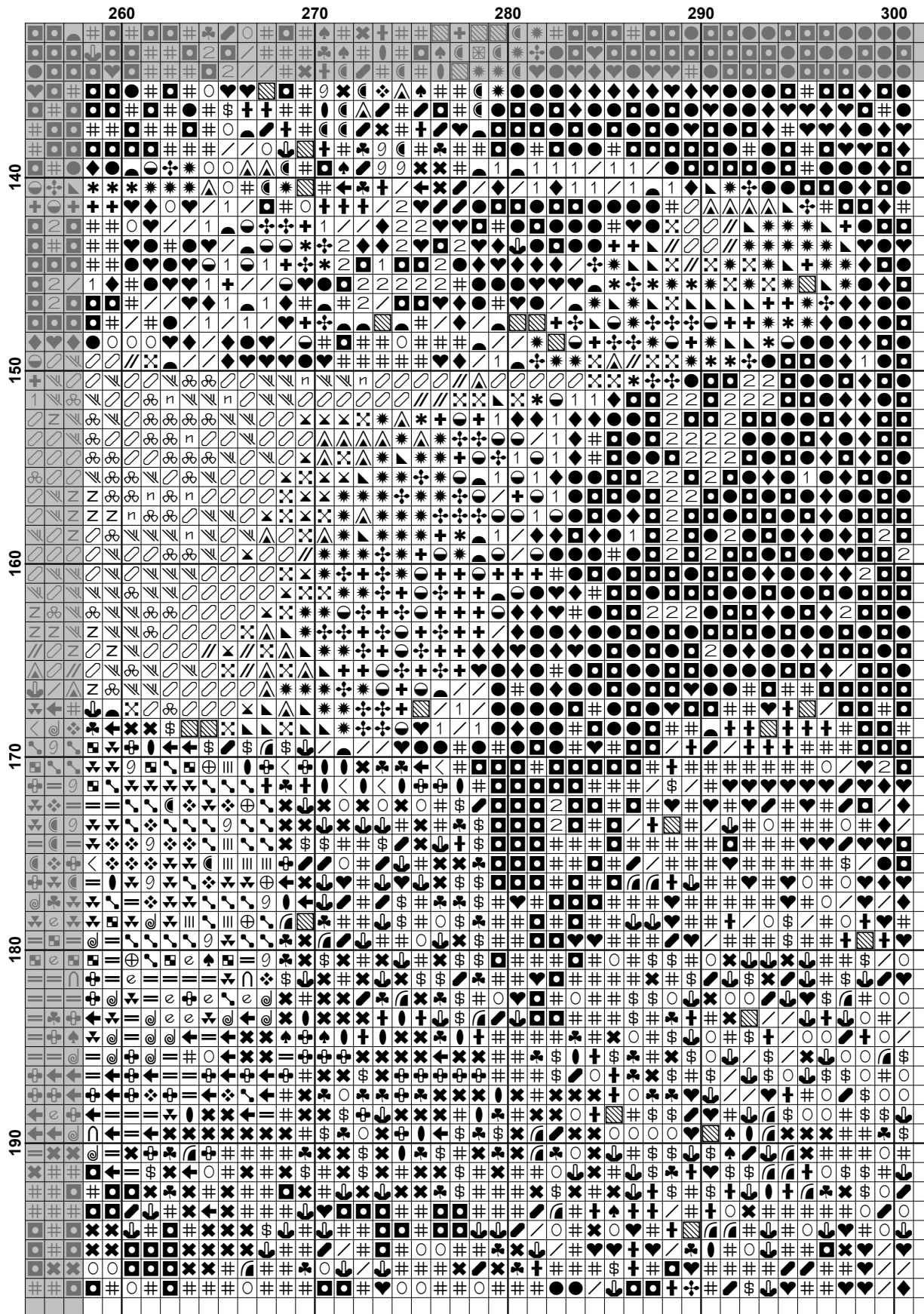





































**Pattern Name:** End of a Long Day  
**Designed By:** by John Frederick Herring Jr  
**Company:** Artecy Cross Stitch  
**Copyright:** Copyright Artecy Cross Stitch. All rights Reserved.  
**Fabric:** Aida 14, White  
 300w X 197h Stitches  
**Size(s):** 14 Count, 21-3/8w X 14h in  
 16 Count, 18-3/4w X 12-1/4h in  
 18 Count, 16-5/8w X 10-7/8h in

**Floss Used for Full Stitches:**

Symbol	Strands	Type	Number	Color
	2	DMC	300	Mahogany-VY DK
	2	DMC	301	Mahogany-MD
	2	DMC	310	Black
	2	DMC	318	Steel Gray-LT
	2	DMC	372	Mustard-LT
	2	DMC	400	Mahogany-DK
	2	DMC	420	Hazelnut Brown-DK
	2	DMC	433	Brown-MD
	2	DMC	434	Brown-LT
	2	DMC	435	Brown-VY LT
	2	DMC	436	Tan
	2	DMC	437	Tan-LT
	2	DMC	451	Shell Gray-DK
	2	DMC	452	Shell Gray-MD
	2	DMC	610	Drab Brown-DK
	2	DMC	611	Drab Brown
	2	DMC	612	Drab Brown-LT
	2	DMC	613	Drab Brown-VY LT
	2	DMC	632	Desert Sand-UL VY DK
	2	DMC	640	Beige Gray-VY DK
	2	DMC	645	Beaver Gray-VY DK
	2	DMC	646	Beaver Gray-DK
	2	DMC	647	Beaver Gray-MD
	2	DMC	648	Beaver Gray-LT
	2	DMC	676	Old Gold-LT
	2	DMC	712	Cream
	2	DMC	729	Old Gold-MD
	2	DMC	732	Olive Green
	2	DMC	738	Tan-VY LT
	2	DMC	739	Tan-UL VY LT
	2	DMC	762	Pearl Gray-VY LT
	2	DMC	775	Baby Blue-VY LT
	2	DMC	780	Topaz-UL VY DK
	2	DMC	782	Topaz-DK
	2	DMC	783	Topaz-MD
	2	DMC	801	Coffee Brown-DK
	2	DMC	822	Beige Gray-LT
	2	DMC	829	Golden Olive-VY DK
	2	DMC	831	Golden Olive-MD
	2	DMC	833	Golden Olive-LT
	2	DMC	838	Beige Brown-VY DK
	2	DMC	839	Beige Brown-DK
	2	DMC	842	Beige Brown-VY LT
	2	DMC	844	Beaver Brown-UL DK
	2	DMC	869	Hazelnut Brown-VY DK
	2	DMC	898	Coffee Brown-VY DK

Symbol	Strands	Type	Number	Color
	#	2	DMC 938	Coffee Brown-UL DK
	· ·	2	DMC 951	Tawny-LT
	♣	2	DMC 975	Golden Brown-DK
	@	2	DMC 976	Golden Brown-MD
	■	2	DMC 977	Golden Brown-LT
	H	2	DMC 3012	Khaki Green-MD
	◆	2	DMC 3021	Brown Gray-VY DK
	■	2	DMC 3024	Brown Gray-VY LT
	●	2	DMC 3031	Mocha Brown-VY DK
	7	2	DMC 3033	Mocha Brown-VY LT
	8	2	DMC 3072	Beaver Gray-VY LT
	■	2	DMC 3371	Black Brown
	6	2	DMC 3753	Antique Blue-UL VY LT
	⊗	2	DMC 3756	Baby Blue-UL VY LT
	:	2	DMC 3770	Tawny-VY LT
	☾	2	DMC 3772	Desert Sand-VY DK
	9	2	DMC 3776	Mahogany-LT
	+	2	DMC 3790	Beige Gray-UL DK
	⊕	2	DMC 3827	Golden Brown-Pale
	❖	2	DMC 3828	Hazelnut Brown
	☞	2	DMC 3857	Rosewood-DK
	✦	2	DMC 3860	Cocoa
	✦	2	DMC 3861	Cocoa-LT
	▨	2	DMC 3862	Mocha Beige-DK
	○	2	DMC 3864	Mocha Beige-LT

**Notes:**

The middle of this pattern can be found on page 9 and is 151 stitches across and 100 stitches down.

Pattern layout using page numbers in top left.

1 2 3 4 5 6  
 7 8 9 10 11 12  
 13 14 15 16 17 18

**Usage Summary**

**Strands Per Skein:** 6

**Skein Length:** 313.0 in

Type	Number	Full	Half	Quarter	Petite	Back(in)	Str(in)	Spec(in)	French	Bead	Skein Est.
DMC 300	300	2339	0	0	0	0.0	0.0	0.0	0	0	1.000
DMC 301	301	143	0	0	0	0.0	0.0	0.0	0	0	1.000
DMC 310	310	5436	0	0	0	0.0	0.0	0.0	0	0	3.000
DMC 318	318	80	0	0	0	0.0	0.0	0.0	0	0	1.000
DMC 372	372	313	0	0	0	0.0	0.0	0.0	0	0	1.000
DMC 400	400	511	0	0	0	0.0	0.0	0.0	0	0	1.000
DMC 420	420	826	0	0	0	0.0	0.0	0.0	0	0	1.000
DMC 433	433	859	0	0	0	0.0	0.0	0.0	0	0	1.000
DMC 434	434	532	0	0	0	0.0	0.0	0.0	0	0	1.000
DMC 435	435	763	0	0	0	0.0	0.0	0.0	0	0	1.000
DMC 436	436	379	0	0	0	0.0	0.0	0.0	0	0	1.000
DMC 437	437	529	0	0	0	0.0	0.0	0.0	0	0	1.000
DMC 451	451	112	0	0	0	0.0	0.0	0.0	0	0	1.000
DMC 452	452	106	0	0	0	0.0	0.0	0.0	0	0	1.000
DMC 610	610	966	0	0	0	0.0	0.0	0.0	0	0	1.000
DMC 611	611	288	0	0	0	0.0	0.0	0.0	0	0	1.000
DMC 612	612	564	0	0	0	0.0	0.0	0.0	0	0	1.000
DMC 613	613	140	0	0	0	0.0	0.0	0.0	0	0	1.000
DMC 632	632	486	0	0	0	0.0	0.0	0.0	0	0	1.000
DMC 640	640	508	0	0	0	0.0	0.0	0.0	0	0	1.000
DMC 645	645	175	0	0	0	0.0	0.0	0.0	0	0	1.000
DMC 646	646	65	0	0	0	0.0	0.0	0.0	0	0	1.000
DMC 647	647	70	0	0	0	0.0	0.0	0.0	0	0	1.000
DMC 648	648	141	0	0	0	0.0	0.0	0.0	0	0	1.000
DMC 676	676	157	0	0	0	0.0	0.0	0.0	0	0	1.000
DMC 712	712	1593	0	0	0	0.0	0.0	0.0	0	0	1.000
DMC 729	729	681	0	0	0	0.0	0.0	0.0	0	0	1.000
DMC 732	732	263	0	0	0	0.0	0.0	0.0	0	0	1.000
DMC 738	738	274	0	0	0	0.0	0.0	0.0	0	0	1.000
DMC 739	739	128	0	0	0	0.0	0.0	0.0	0	0	1.000
DMC 762	762	461	0	0	0	0.0	0.0	0.0	0	0	1.000
DMC 775	775	740	0	0	0	0.0	0.0	0.0	0	0	1.000
DMC 780	780	526	0	0	0	0.0	0.0	0.0	0	0	1.000
DMC 782	782	958	0	0	0	0.0	0.0	0.0	0	0	1.000
DMC 783	783	442	0	0	0	0.0	0.0	0.0	0	0	1.000
DMC 801	801	836	0	0	0	0.0	0.0	0.0	0	0	1.000
DMC 822	822	772	0	0	0	0.0	0.0	0.0	0	0	1.000
DMC 829	829	1543	0	0	0	0.0	0.0	0.0	0	0	1.000
DMC 831	831	473	0	0	0	0.0	0.0	0.0	0	0	1.000
DMC 833	833	386	0	0	0	0.0	0.0	0.0	0	0	1.000
DMC 838	838	750	0	0	0	0.0	0.0	0.0	0	0	1.000
DMC 839	839	640	0	0	0	0.0	0.0	0.0	0	0	1.000
DMC 842	842	137	0	0	0	0.0	0.0	0.0	0	0	1.000
DMC 844	844	227	0	0	0	0.0	0.0	0.0	0	0	1.000
DMC 869	869	1021	0	0	0	0.0	0.0	0.0	0	0	1.000
DMC 898	898	2059	0	0	0	0.0	0.0	0.0	0	0	1.000
DMC 938	938	6987	0	0	0	0.0	0.0	0.0	0	0	3.000
DMC 951	951	102	0	0	0	0.0	0.0	0.0	0	0	1.000
DMC 975	975	761	0	0	0	0.0	0.0	0.0	0	0	1.000
DMC 976	976	190	0	0	0	0.0	0.0	0.0	0	0	1.000
DMC 977	977	292	0	0	0	0.0	0.0	0.0	0	0	1.000
DMC 3012	3012	253	0	0	0	0.0	0.0	0.0	0	0	1.000

Type	Number	Full	Half	Quarter	Petite	Back(in)	Str(in)	Spec(in)	French	Bead	Skein	Est.
DMC	3021	470	0	0	0	0.0	0.0	0.0	0	0	1.000	
DMC	3024	499	0	0	0	0.0	0.0	0.0	0	0	1.000	
DMC	3031	982	0	0	0	0.0	0.0	0.0	0	0	1.000	
DMC	3033	1062	0	0	0	0.0	0.0	0.0	0	0	1.000	
DMC	3072	2929	0	0	0	0.0	0.0	0.0	0	0	2.000	
DMC	3371	6592	0	0	0	0.0	0.0	0.0	0	0	3.000	
DMC	3753	368	0	0	0	0.0	0.0	0.0	0	0	1.000	
DMC	3756	1570	0	0	0	0.0	0.0	0.0	0	0	1.000	
DMC	3770	784	0	0	0	0.0	0.0	0.0	0	0	1.000	
DMC	3772	566	0	0	0	0.0	0.0	0.0	0	0	1.000	
DMC	3776	119	0	0	0	0.0	0.0	0.0	0	0	1.000	
DMC	3790	394	0	0	0	0.0	0.0	0.0	0	0	1.000	
DMC	3827	371	0	0	0	0.0	0.0	0.0	0	0	1.000	
DMC	3828	547	0	0	0	0.0	0.0	0.0	0	0	1.000	
DMC	3857	161	0	0	0	0.0	0.0	0.0	0	0	1.000	
DMC	3860	196	0	0	0	0.0	0.0	0.0	0	0	1.000	
DMC	3861	190	0	0	0	0.0	0.0	0.0	0	0	1.000	
DMC	3862	768	0	0	0	0.0	0.0	0.0	0	0	1.000	
DMC	3864	549	0	0	0	0.0	0.0	0.0	0	0	1.000	