

Eruption



* Original image copyright of Walter Lim - flickr.
Cross Stitch Design by Tereena Clarke.

Completed Size = 250w x 167h Stitches

14 Count, 18w x 12h inches (46cm x 30cm)

16 Count, 16w x 10.5h inches (41cm x 27cm)

18 Count, 14w x 9.5h inches (36cm x 24cm)

Uses 33 DMC cotton colours. Only full cross stitches are used in this pattern.

Pattern Instructions

* This pattern can be worked on any fabric type, colour or count you prefer. To work out the size of the finished article, take the number of stitches wide and high and divide it by the count of your fabric (e.g. 14,16,18 count aida etc) to get the size in inches. Times it by 2.54 to get centimetres. We have the sizes in inches shown on the previous page. Also leave at least a few inches of fabric around each side of the design to assist in framing. The higher the fabric count the smaller the completed project will be.

* To put the pattern together look in the top and bottom corners. The page numbers in brackets show which page number it joins up to. Page 1 always starts at the top left hand side of the pattern. Our pages also have a shaded grey section. This indicates a 3 row overlap from adjoining pages to assist with reading the pattern. PLEASE DO NOT RESTITCH THIS AREA.

* You should begin at the centre of the pattern. To find the centre of the pattern it is just a matter of laying the pattern out and locating the arrows at the top and left hand side of the patterns, they are determined by dividing the stitch numbers wide and high in half. Where the two points meet in the middle, that is the centre.

* If you need more assistance to find the middle of your pattern or the page layout, please see the notes section on the colour symbol chart. The easiest way to stitch this pattern, as it has multiple pages, is to stitch one page at a time.

* We suggest using two strands of floss for each stitch and one strand for backstitching if the pattern calls for it.

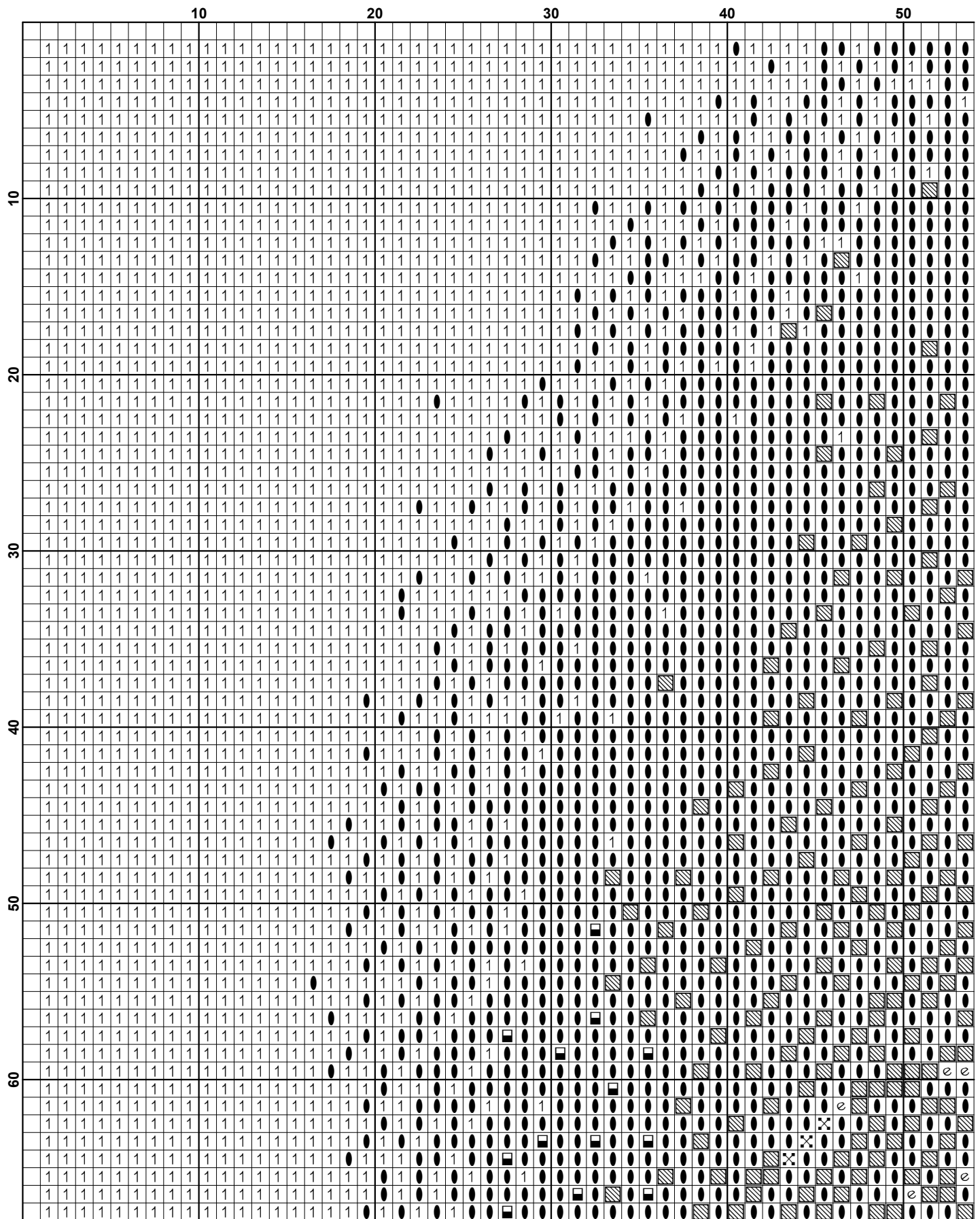
We hope you enjoy stitching our pattern.

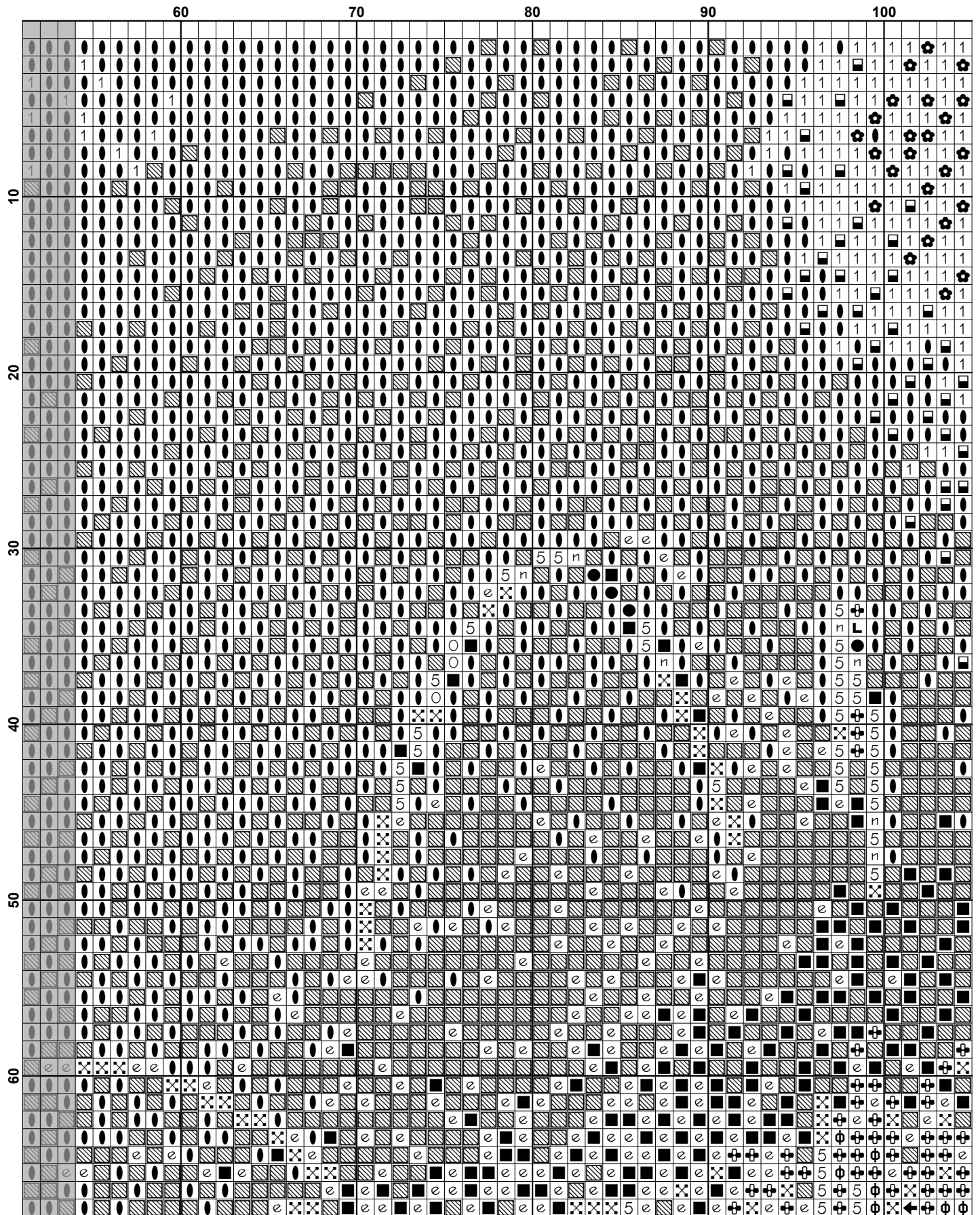
Thanks and Best Wishes
Tereena Clarke

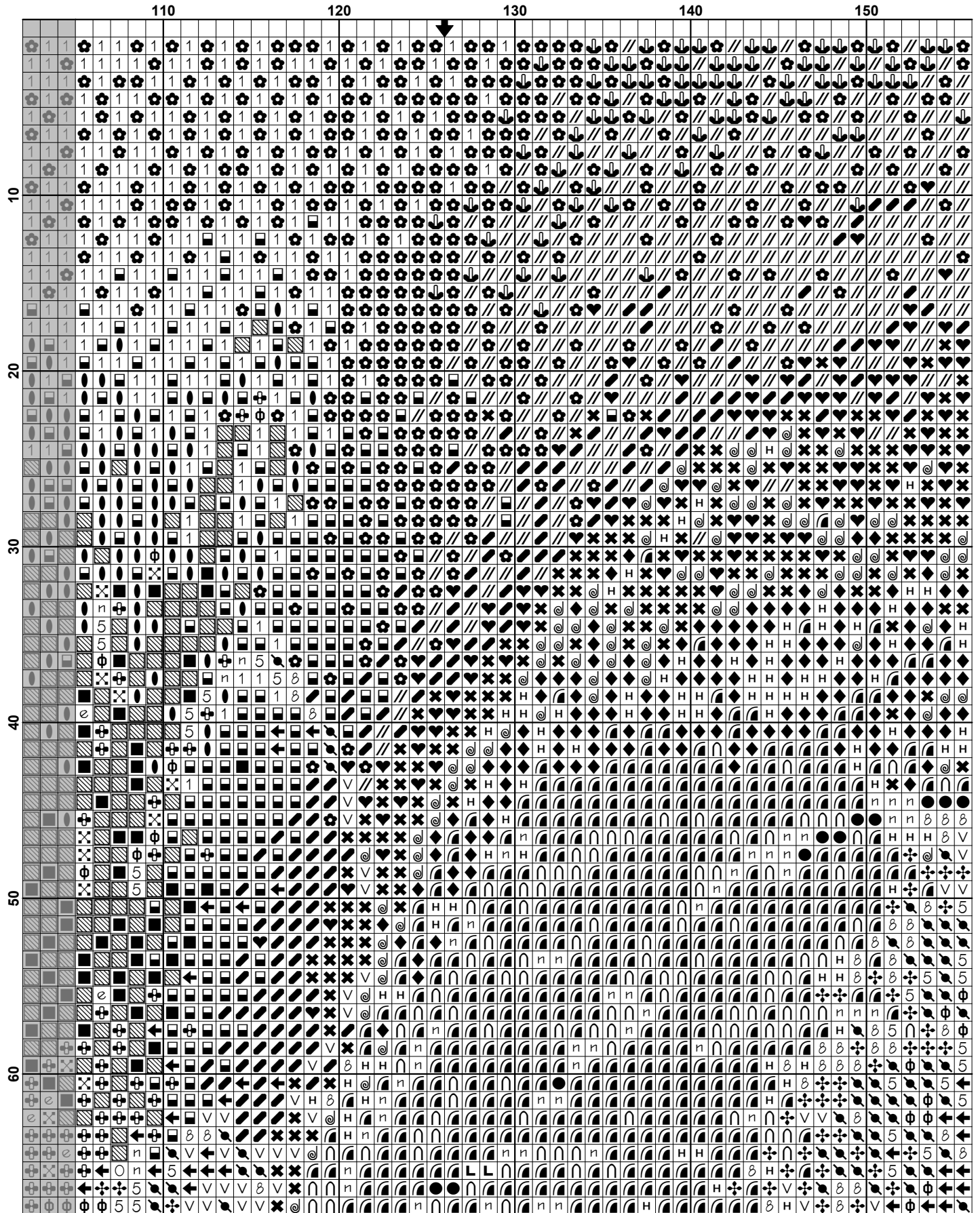
Artecy Cross Stitch
Po Box 3474
Tuggerah, NSW 2259
Australia

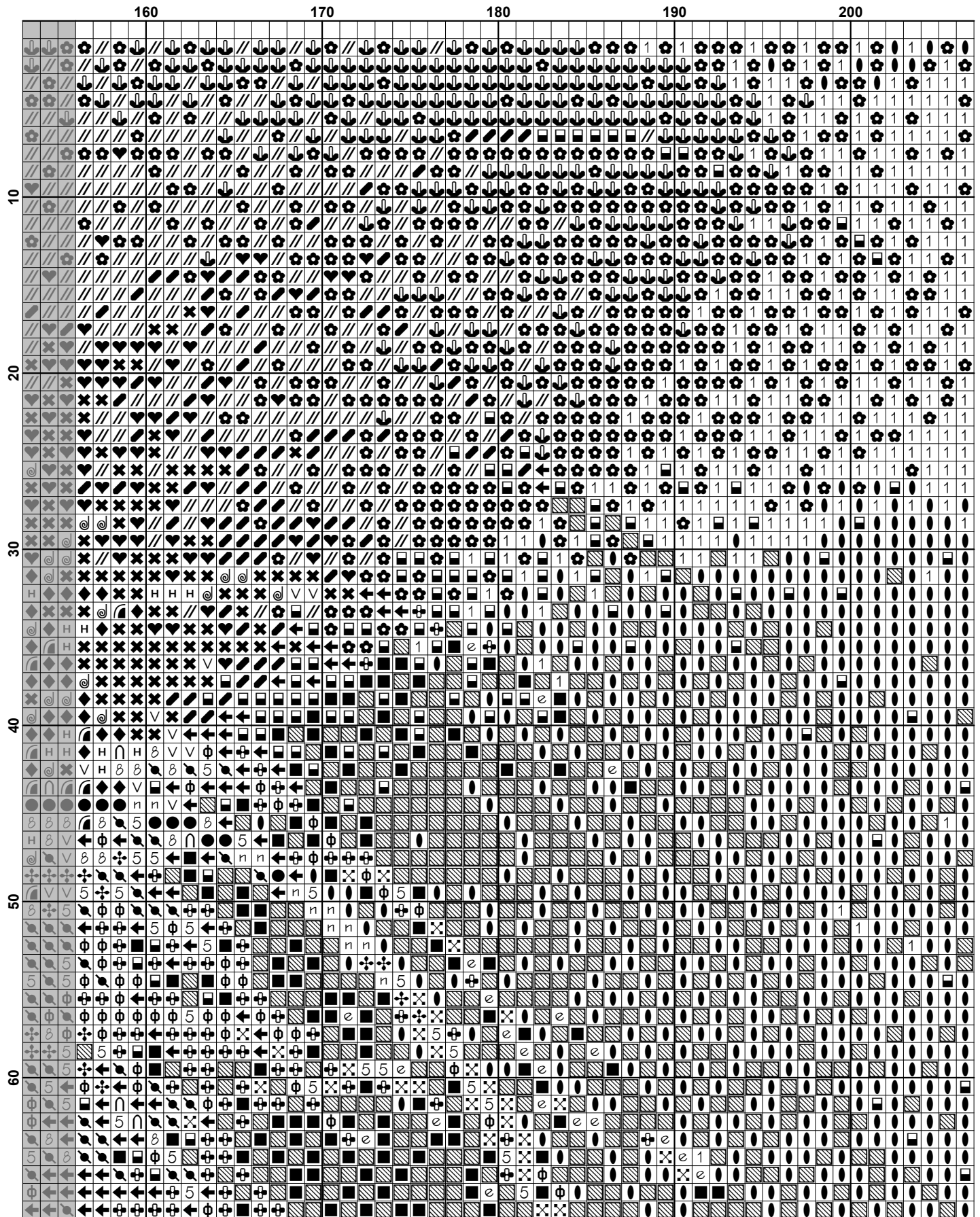
Websites: www.artecy.com and www.artecyshop.com
Email: artecy@artecy.com or stitch@artecyshop.com

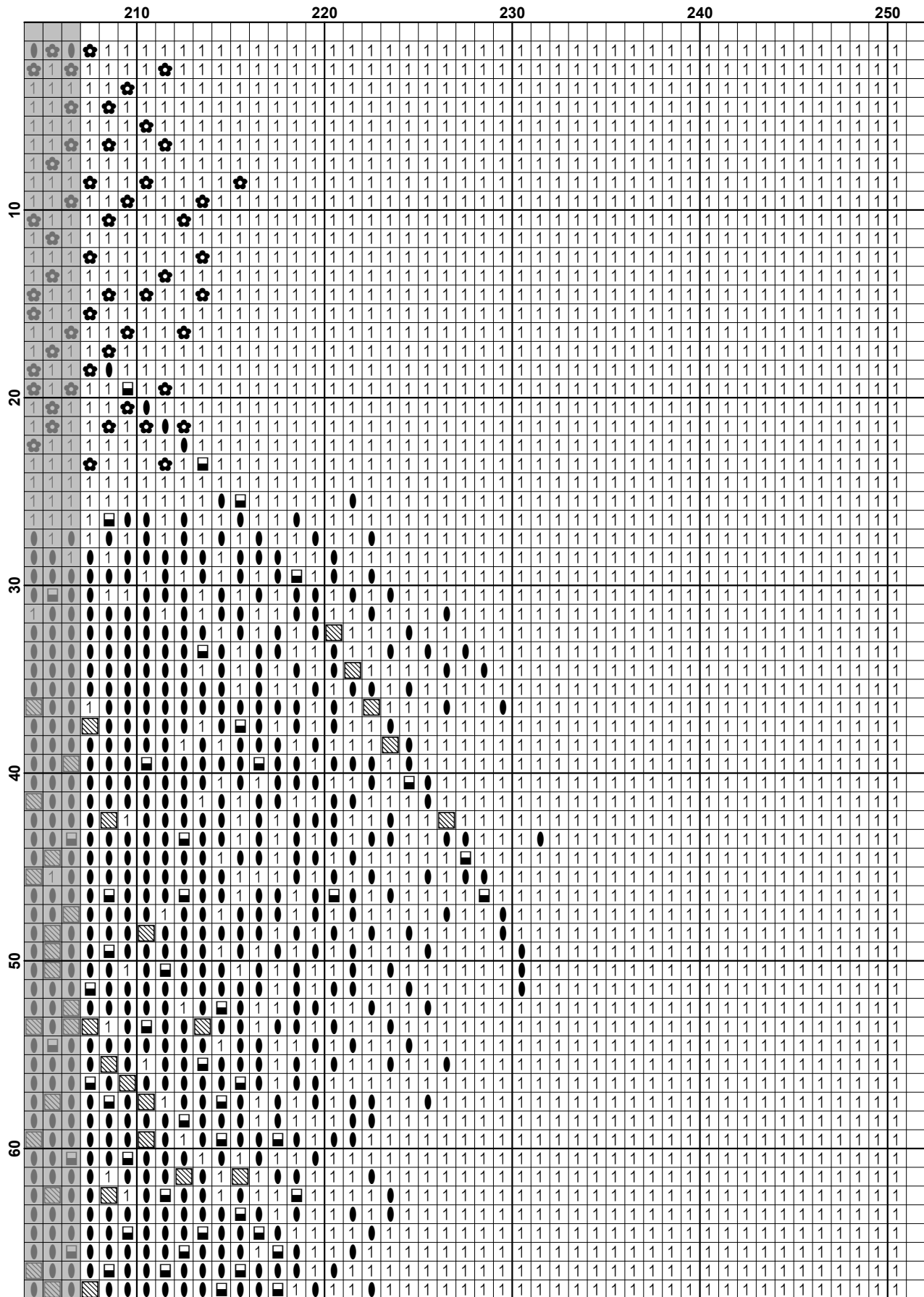
*Patterns are strictly for personal use only. It is against our copyright to make kits for sale from our designs or to sell, copy or redistribute this pattern in any form. You may not upload our patterns to any internet forums or groups or any other website. You may make 1 copy of this pattern for a working copy for your own personal use if needed.

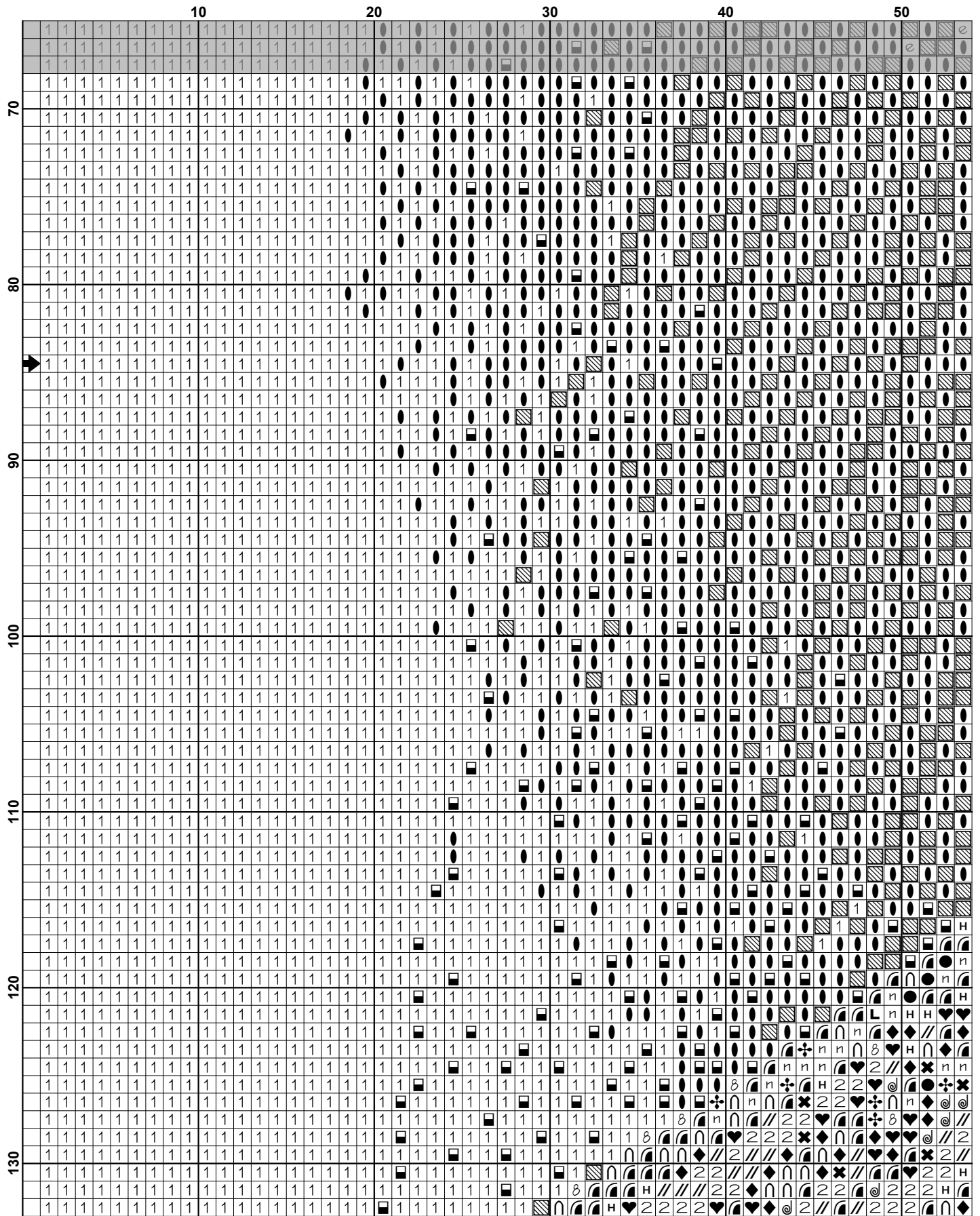


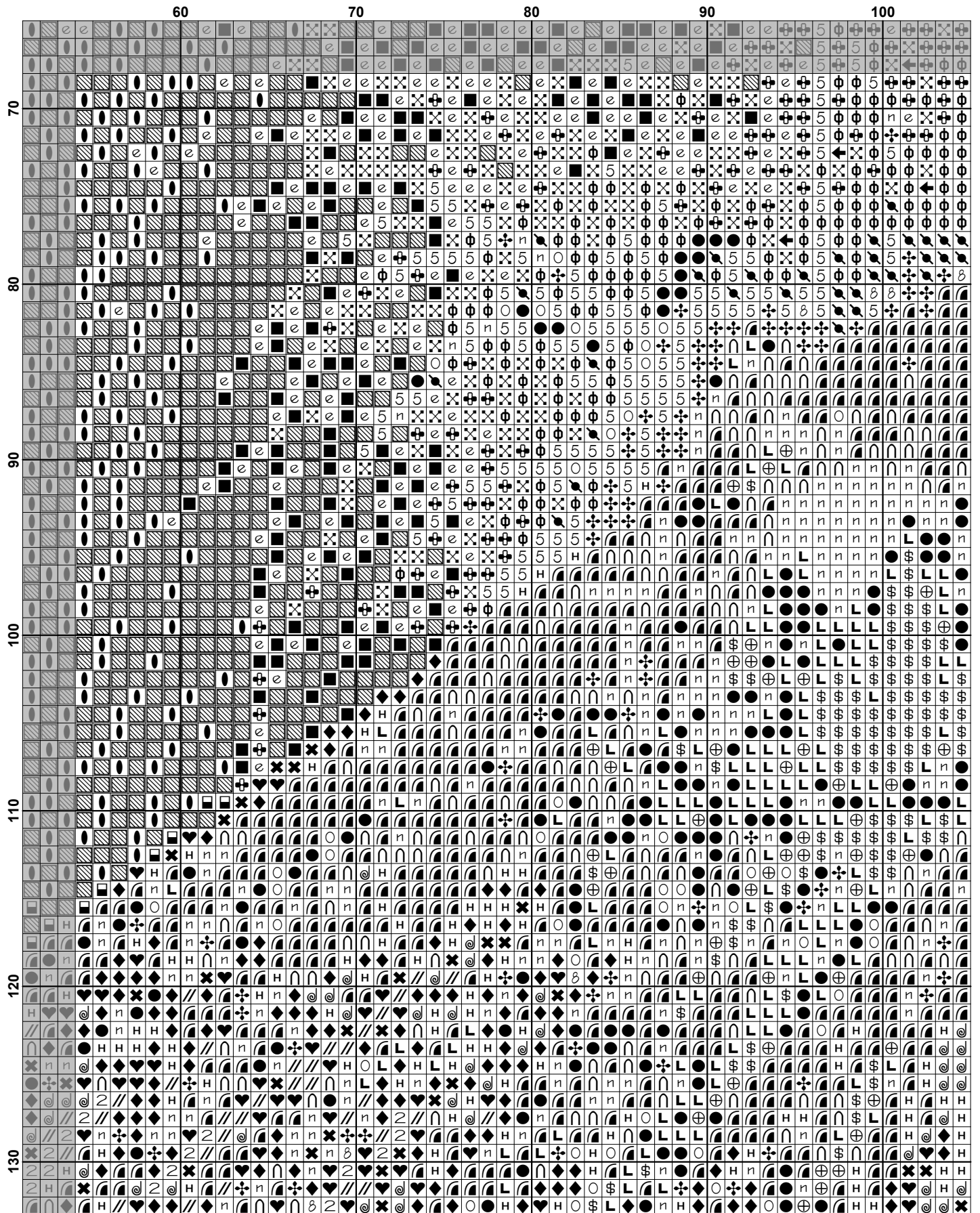


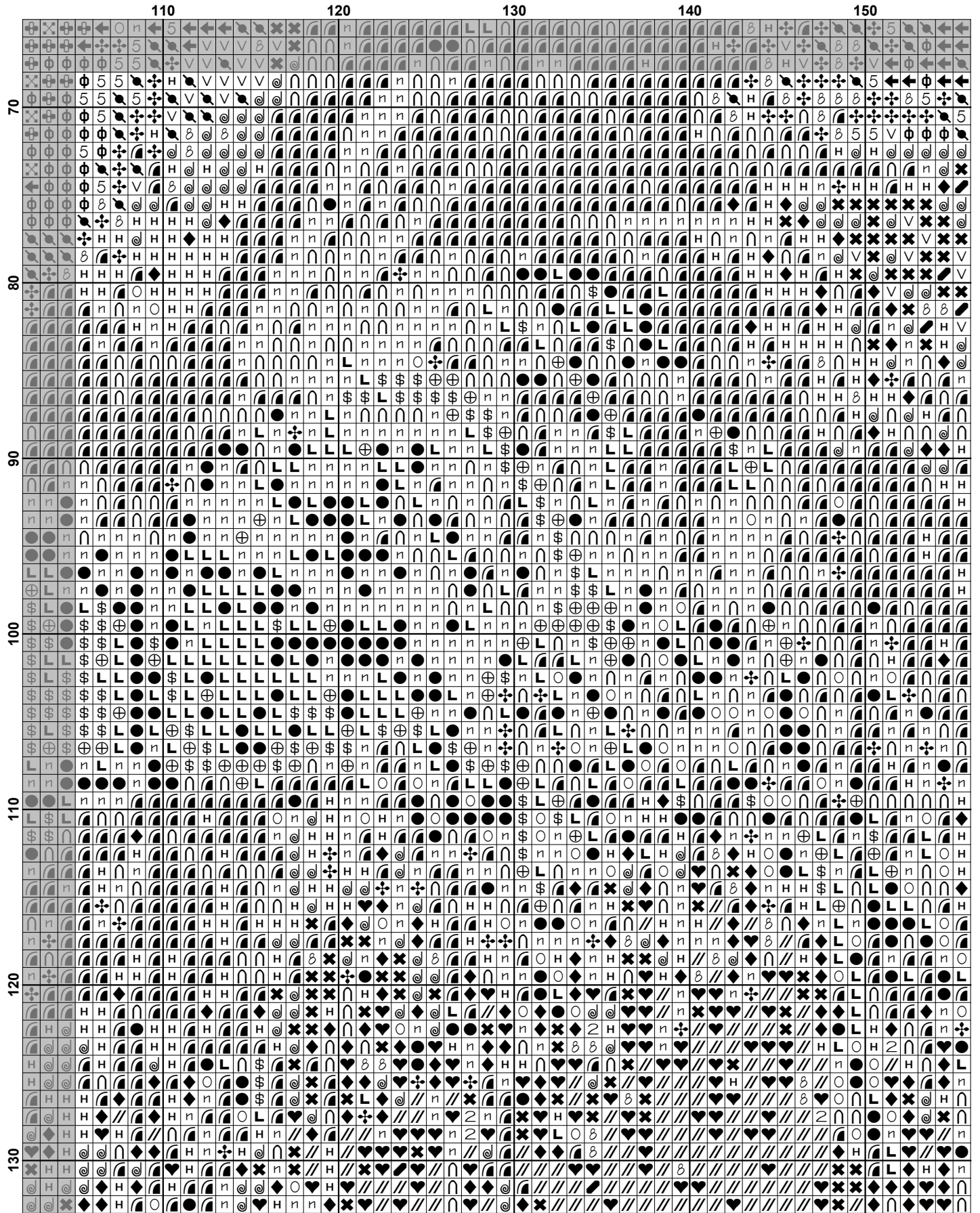


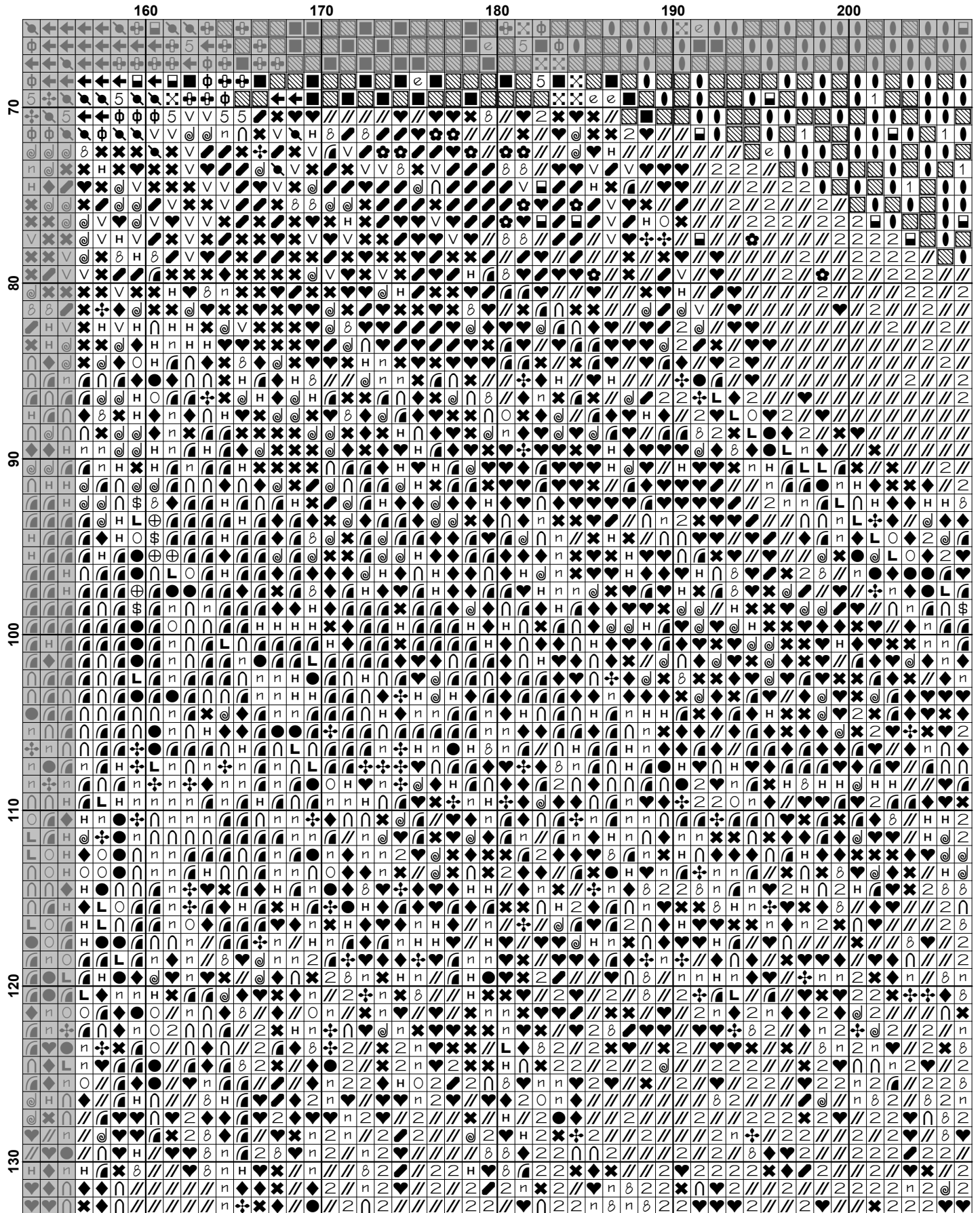


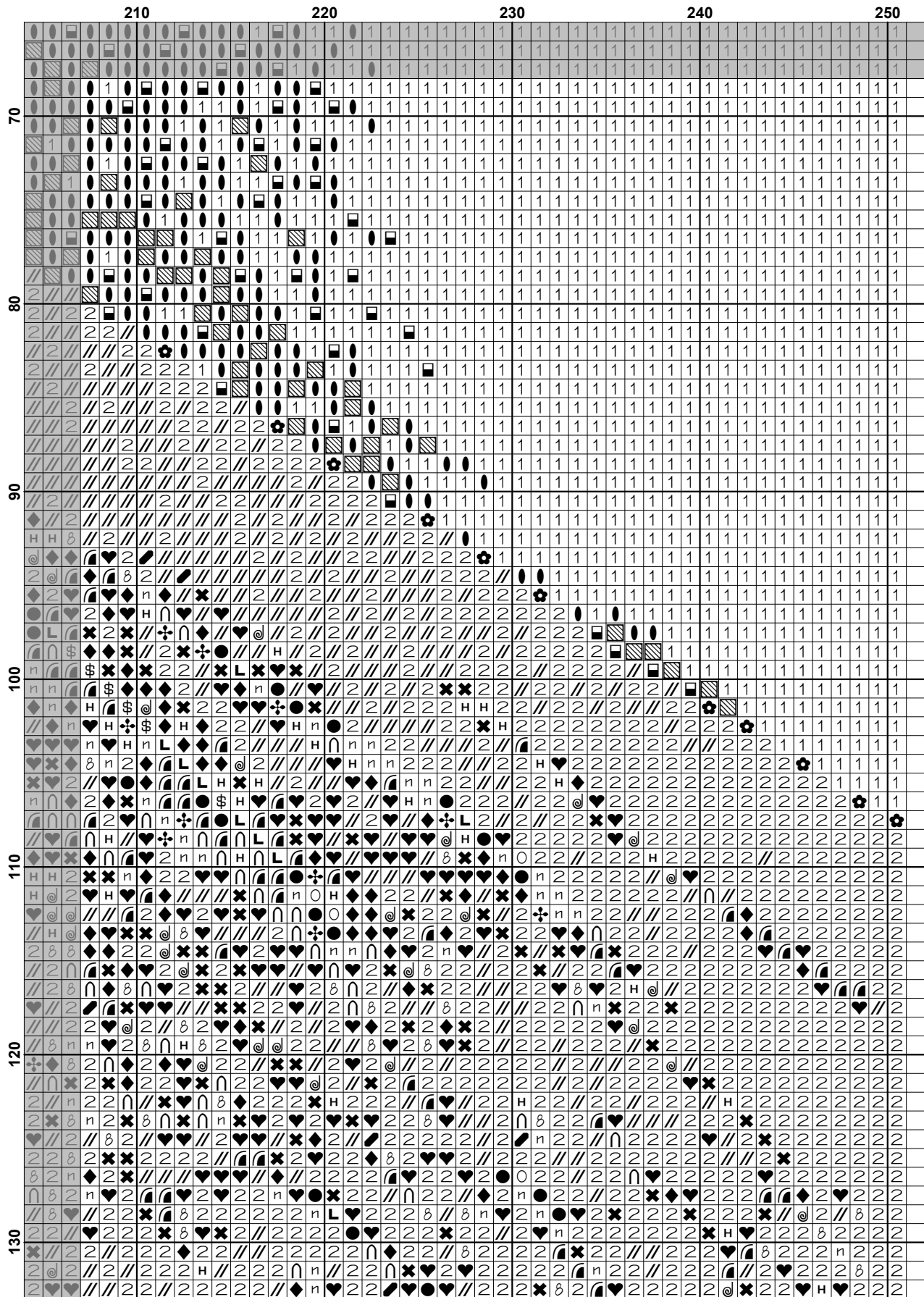


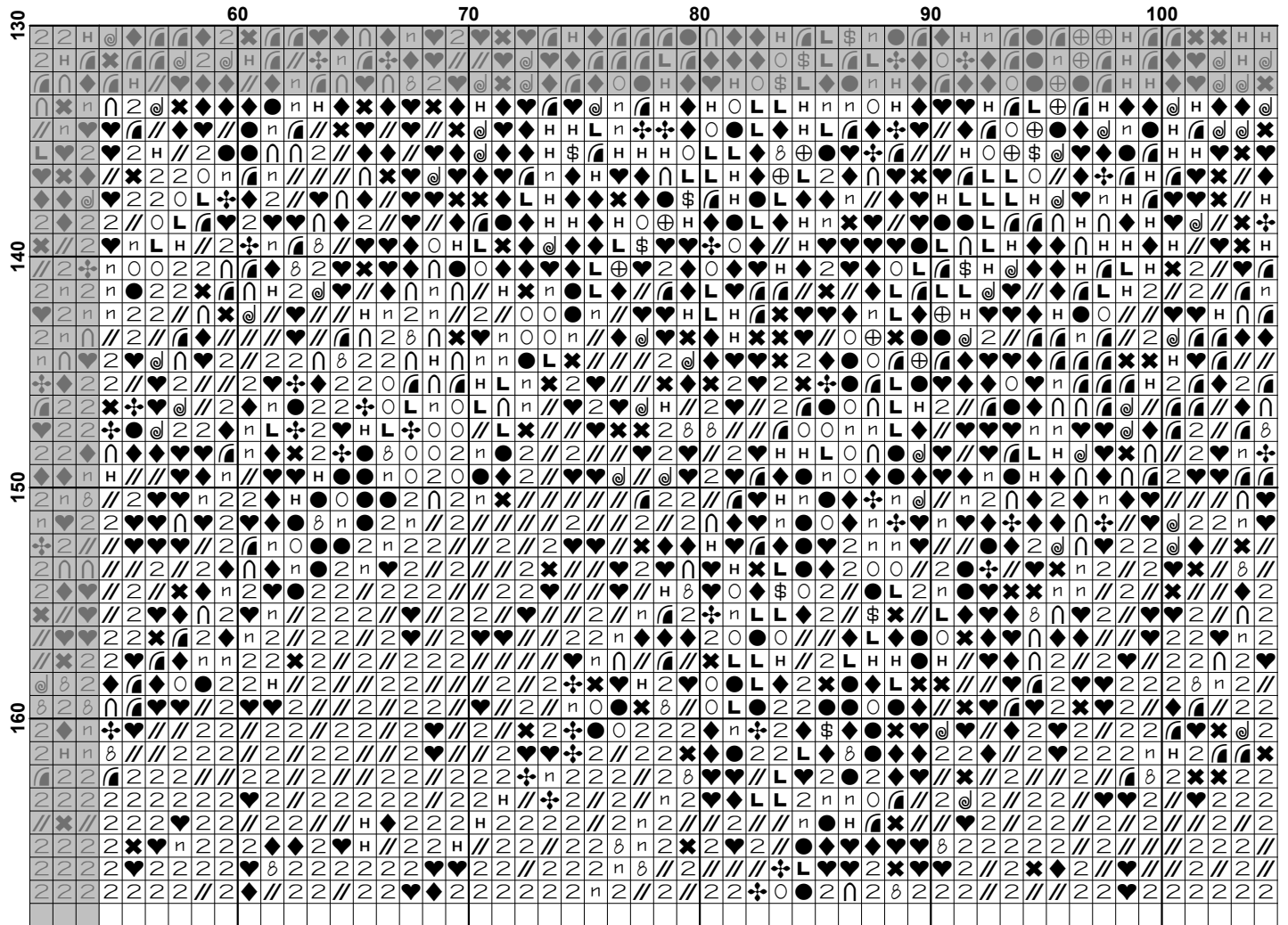


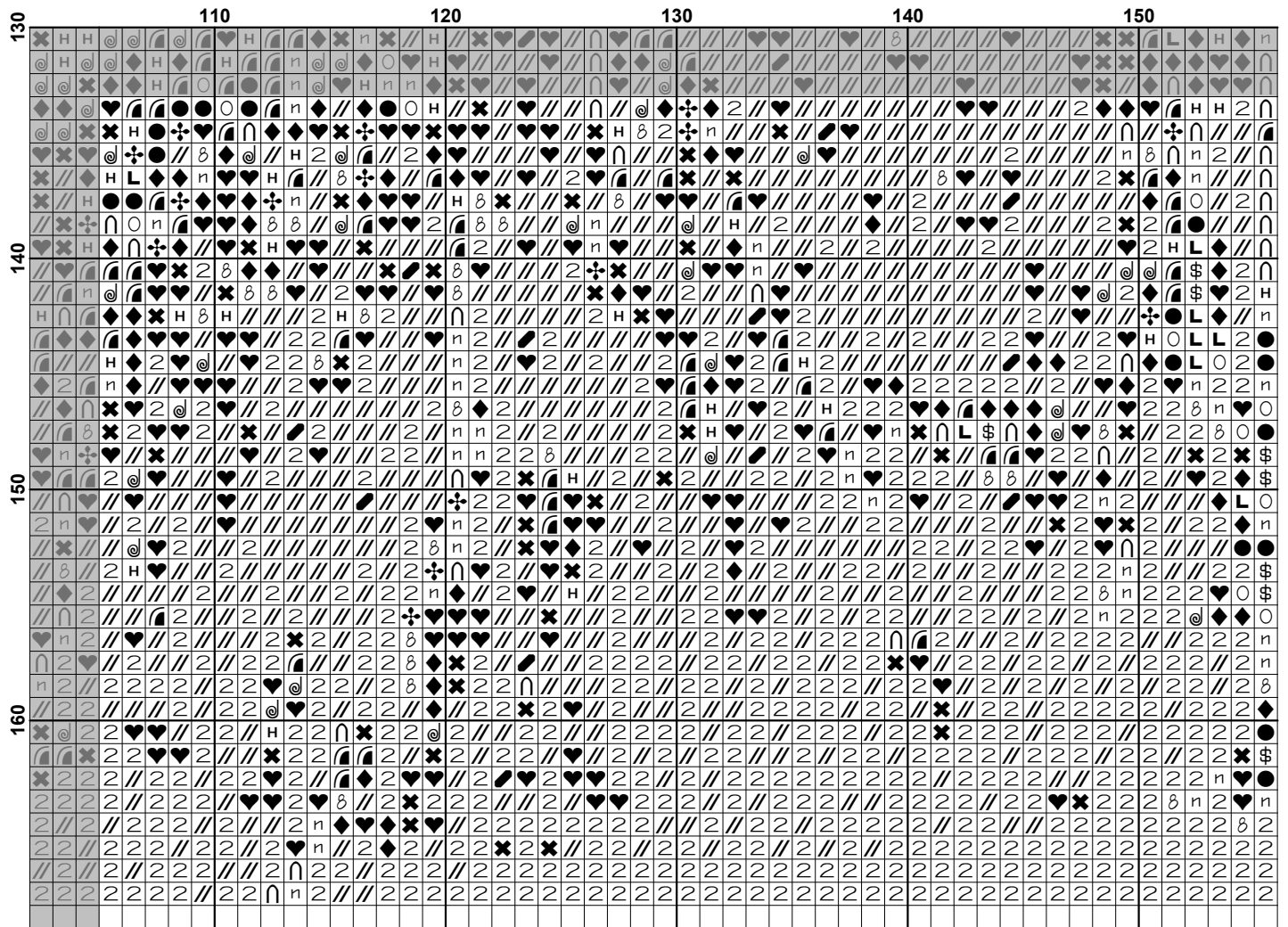


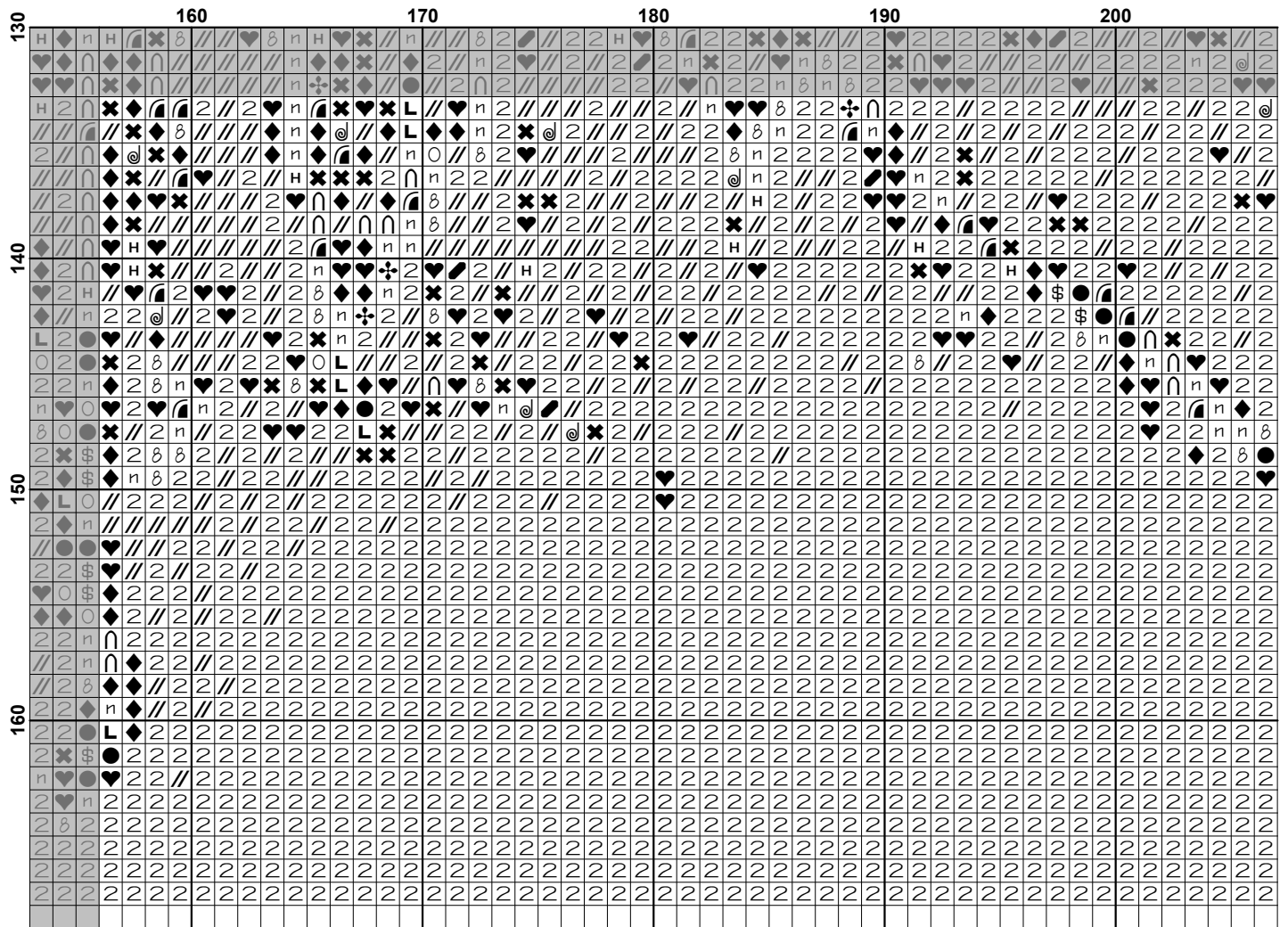













































Pattern Name: Eruption
Designed By: Photograph by Walter Lim
Company: Artecy Cross Stitch
Copyright: Copyright Artecy Cross Stitch. All rights Reserved.
Fabric: Aida 14, White
 250w X 167h Stitches
Size(s): 14 Count, 17-3/4w X 11-7/8h in
 16 Count, 15-5/8w X 10-3/8h in
 18 Count, 13-7/8w X 9-1/4h in

Floss Used for Full Stitches:

Symbol	Strands	Type	Number	Color
	2	DMC	150	Dusty Rose-UL VY DK
	2	DMC	154	Grape-VY DK
	2	DMC	158	Cornflower Blue-MD VY DK
	2	DMC	307	Lemon
	2	DMC	309	Rose-DK
	2	DMC	310	Black
	2	DMC	315	Antique Mauve-VY DK
	2	DMC	321	Christmas Red
	2	DMC	327	Violet-VY DK
	2	DMC	350	Coral-MD
	2	DMC	498	Christmas Red-DK
	2	DMC	550	Violet-VY DK
	2	DMC	552	Violet-MD
	2	DMC	606	Bright Orange-Red
	2	DMC	666	Christmas Red-BRT
	2	DMC	726	Topaz-LT
	2	DMC	740	Tangerine
	2	DMC	741	Tangerine-MD
	2	DMC	742	Tangerine-LT
	2	DMC	791	Cornflower Blue-VY DK
	2	DMC	814	Garnet-DK
	2	DMC	817	Coral Red-VY DK
	2	DMC	823	Navy Blue-DK
	2	DMC	900	Burnt Orange-DK
	2	DMC	946	Burnt Orange-MD
	2	DMC	947	Burnt Orange
	2	DMC	970	Pumpkin-LT
	2	DMC	3350	Dusty Rose-UL DK
	2	DMC	3685	Mauve-DK
	2	DMC	3722	Shell Pink-MD
	2	DMC	3740	Antique Violet-DK
	2	DMC	3803	Mauve-MD
	2	DMC	3834	Grape-DK

Notes:

The middle of this pattern can be found on page 8 and is 126 stitches across and 85 stitches down.

Pattern layout using page numbers in top left.

1 2 3 4 5
 6 7 8 9 10
 11 12 13 14 15

Usage Summary

Strands Per Skein: 6

Skein Length: 313.0 in

Type	Number	Full	Half	Quarter	Petite	Back(in)	Str(in)	Spec(in)	French	Bead	Skein Est.
DMC 150	150	108	0	0	0	0.0	0.0	0.0	0	0	1.000
DMC 154	154	2916	0	0	0	0.0	0.0	0.0	0	0	2.000
DMC 158	158	5281	0	0	0	0.0	0.0	0.0	0	0	3.000
DMC 307	307	209	0	0	0	0.0	0.0	0.0	0	0	1.000
DMC 309	309	156	0	0	0	0.0	0.0	0.0	0	0	1.000
DMC 310	310	5577	0	0	0	0.0	0.0	0.0	0	0	3.000
DMC 315	315	258	0	0	0	0.0	0.0	0.0	0	0	1.000
DMC 321	321	537	0	0	0	0.0	0.0	0.0	0	0	1.000
DMC 327	327	3067	0	0	0	0.0	0.0	0.0	0	0	2.000
DMC 350	350	237	0	0	0	0.0	0.0	0.0	0	0	1.000
DMC 498	498	1068	0	0	0	0.0	0.0	0.0	0	0	1.000
DMC 550	550	1094	0	0	0	0.0	0.0	0.0	0	0	1.000
DMC 552	552	386	0	0	0	0.0	0.0	0.0	0	0	1.000
DMC 606	606	2668	0	0	0	0.0	0.0	0.0	0	0	2.000
DMC 666	666	797	0	0	0	0.0	0.0	0.0	0	0	1.000
DMC 726	726	133	0	0	0	0.0	0.0	0.0	0	0	1.000
DMC 740	740	1264	0	0	0	0.0	0.0	0.0	0	0	1.000
DMC 741	741	590	0	0	0	0.0	0.0	0.0	0	0	1.000
DMC 742	742	462	0	0	0	0.0	0.0	0.0	0	0	1.000
DMC 791	791	7972	0	0	0	0.0	0.0	0.0	0	0	4.000
DMC 814	814	1441	0	0	0	0.0	0.0	0.0	0	0	1.000
DMC 817	817	1184	0	0	0	0.0	0.0	0.0	0	0	1.000
DMC 823	823	311	0	0	0	0.0	0.0	0.0	0	0	1.000
DMC 900	900	351	0	0	0	0.0	0.0	0.0	0	0	1.000
DMC 946	946	1001	0	0	0	0.0	0.0	0.0	0	0	1.000
DMC 947	947	350	0	0	0	0.0	0.0	0.0	0	0	1.000
DMC 970	970	220	0	0	0	0.0	0.0	0.0	0	0	1.000
DMC 3350	3350	235	0	0	0	0.0	0.0	0.0	0	0	1.000
DMC 3685	3685	386	0	0	0	0.0	0.0	0.0	0	0	1.000
DMC 3722	3722	257	0	0	0	0.0	0.0	0.0	0	0	1.000
DMC 3740	3740	432	0	0	0	0.0	0.0	0.0	0	0	1.000
DMC 3803	3803	122	0	0	0	0.0	0.0	0.0	0	0	1.000
DMC 3834	3834	680	0	0	0	0.0	0.0	0.0	0	0	1.000