

Garganey Ducks



* Original image Copyright of Asfloro - Fotolia. Cross Stitch Design by Tereena Clarke.

Completed Size = 250w X 130h Stitches

14 Count, 18w X 9.5h inches

16 Count, 16w X 8.5h inches

18 Count, 14w X 7.5h inches

Uses 57 DMC cotton colours. Only full cross stitches are used in this pattern.

Pattern Instructions

* This pattern can be worked on any fabric type, colour or count you prefer. To work out the size of the finished article, take the number of stitches wide and high and divide it by the count of your fabric (e.14,16,18 count aida etc) to get the size in inches. Times it by 2.54 to get centimetres. We have the sizes in inches shown on the previous page. Also leave at least a few inches of fabric around each side of the design to assist in framing. The higher the fabric count the smaller the completed project will be.

* To put the pattern together look in the top and bottom corners. The page numbers in brackets show which page number it joins up to. Page 1 always starts at the top left hand side of the pattern. Our pages also have a shaded grey section. This indicates a 3 row overlap from adjoining pages to assist with reading the pattern. PLEASE DO NOT RESTITCH THIS AREA.

* You should begin at the centre of the pattern. To find the centre of the pattern it is just a matter of laying the pattern out and locating the arrows at the top and left hand side of the patterns, they are determined by dividing the stitch numbers wide and high in half. Where the two points meet in the middle, that is the centre.

* If you need more assistance to find the middle of your pattern or the page layout, please see the notes section on the colour symbol chart. The easiest way to stitch this pattern, as it has multiple pages, is to stitch one page at a time.

* We suggest using two strands of floss for each stitch and one strand for backstitching if the pattern calls for it.

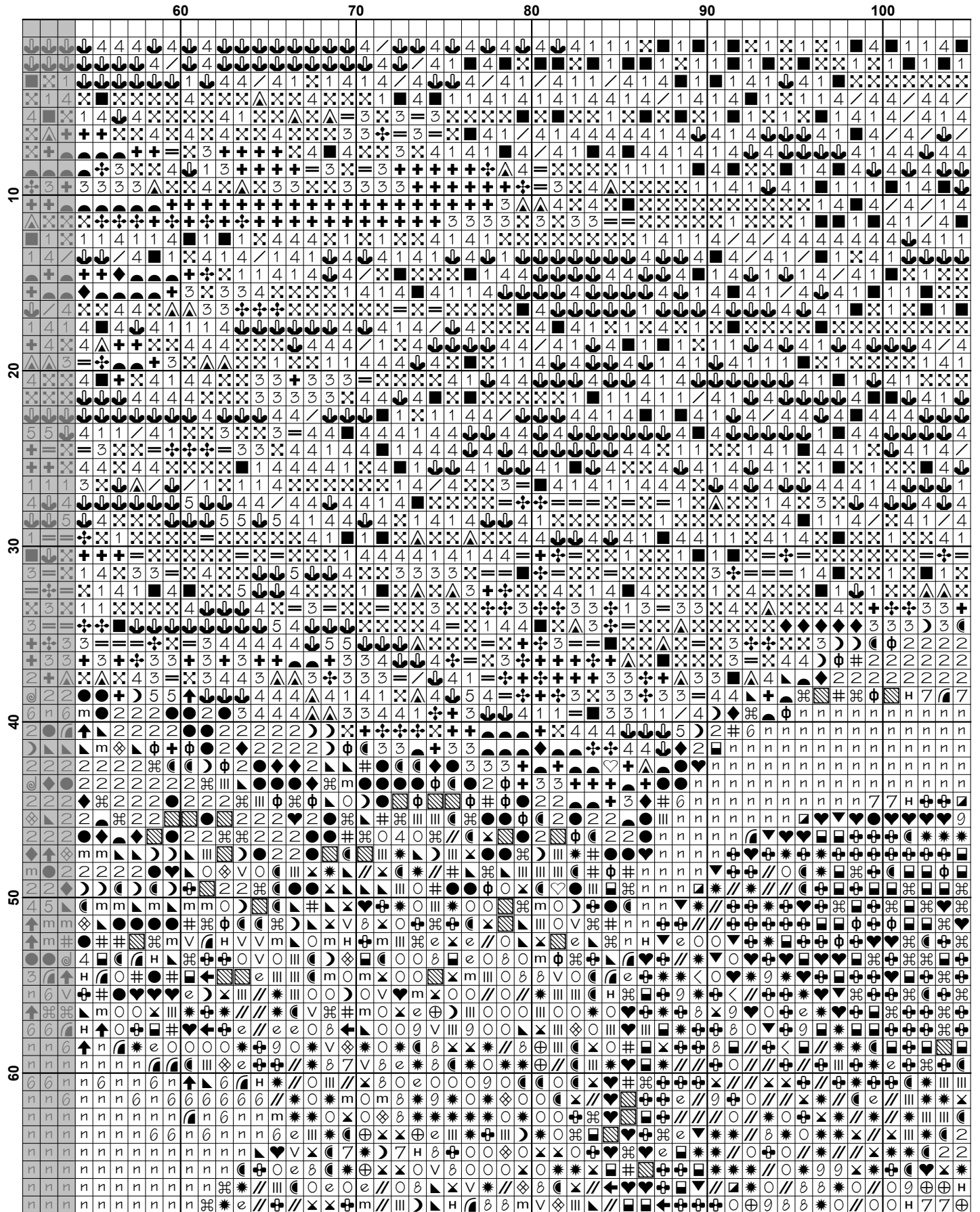
We hope you enjoy stitching our pattern.

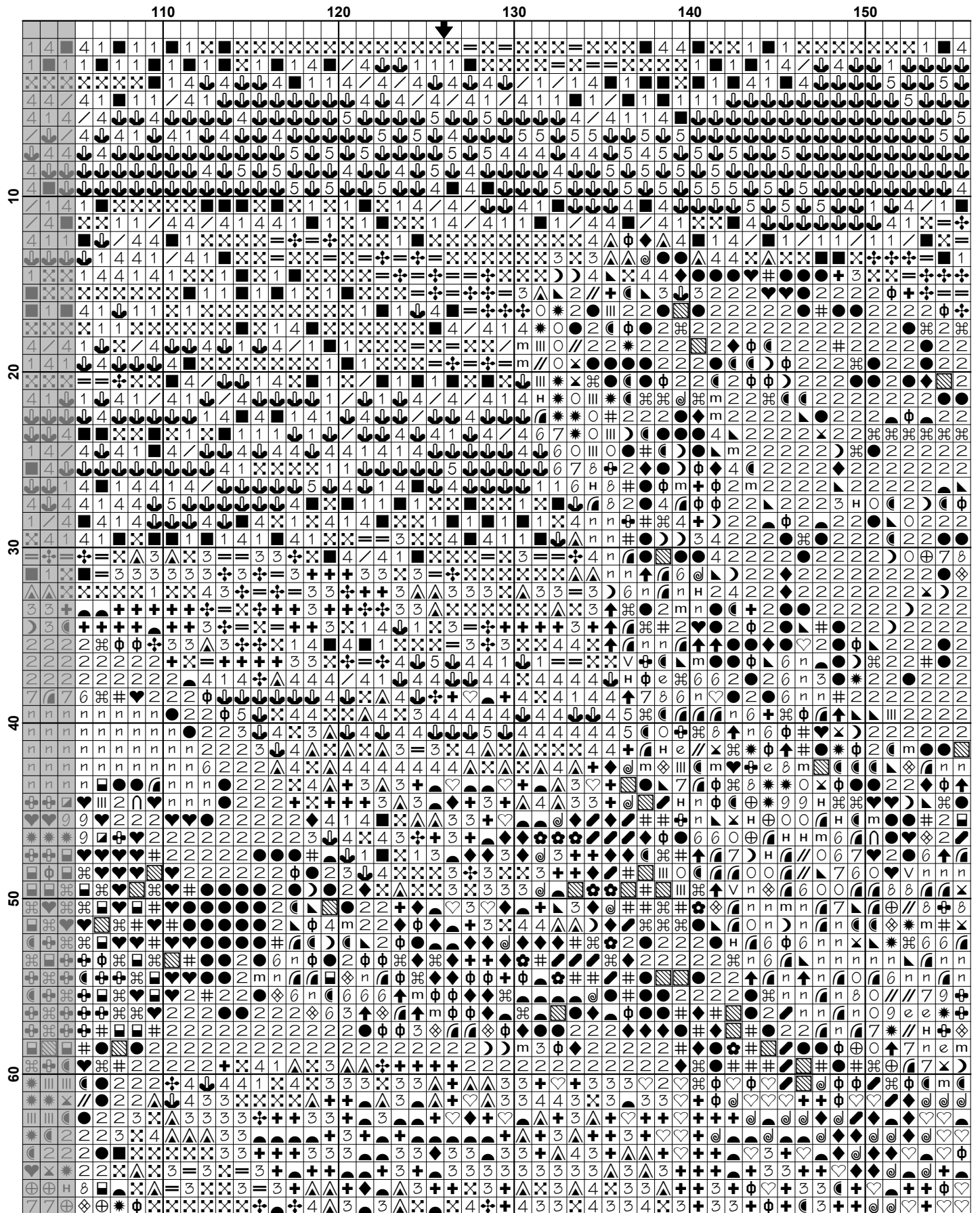
Thanks and Best Wishes
Tereena Clarke

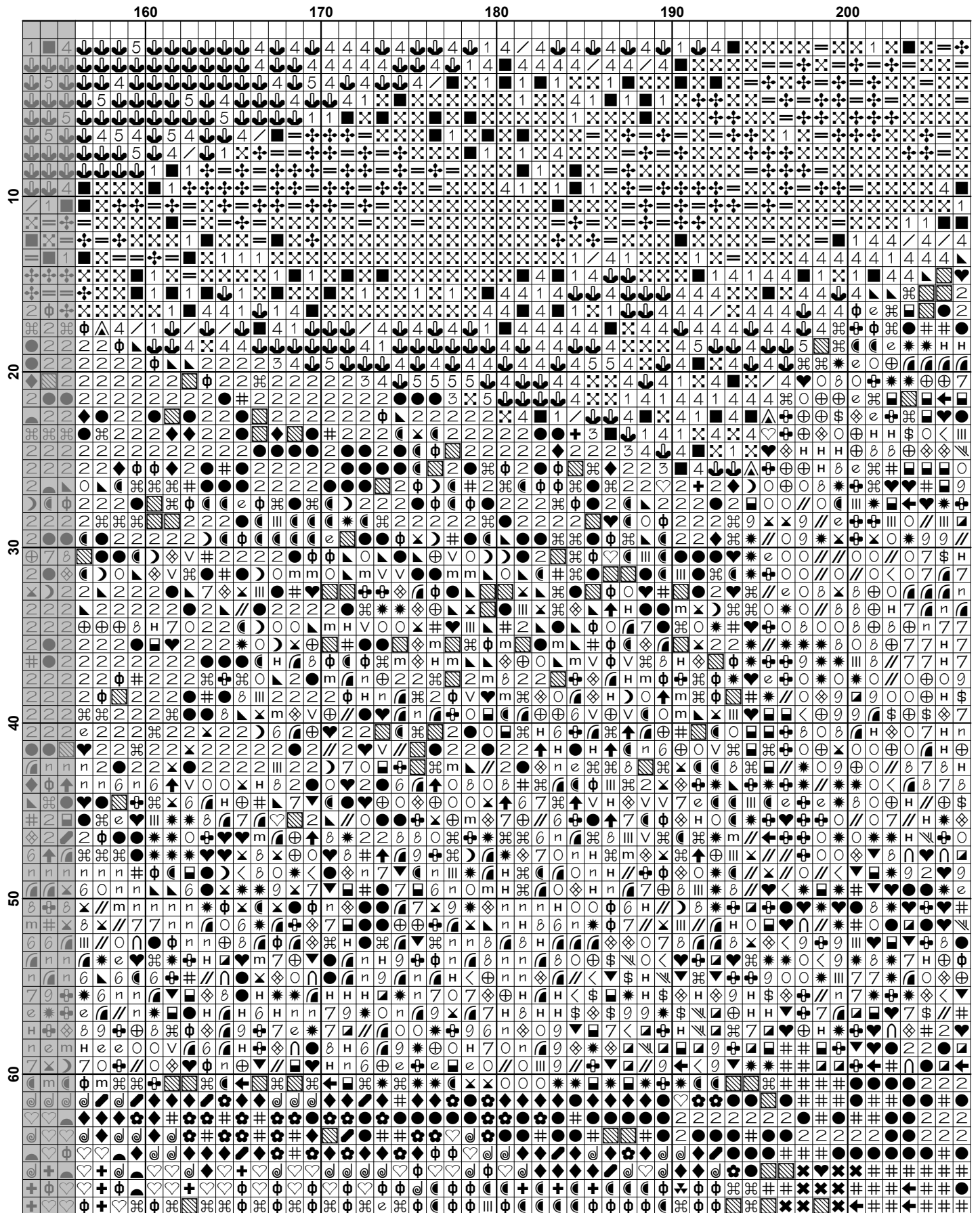
Artecy Cross Stitch
Po Box 3474
Tuggerah, NSW 2259
Australia

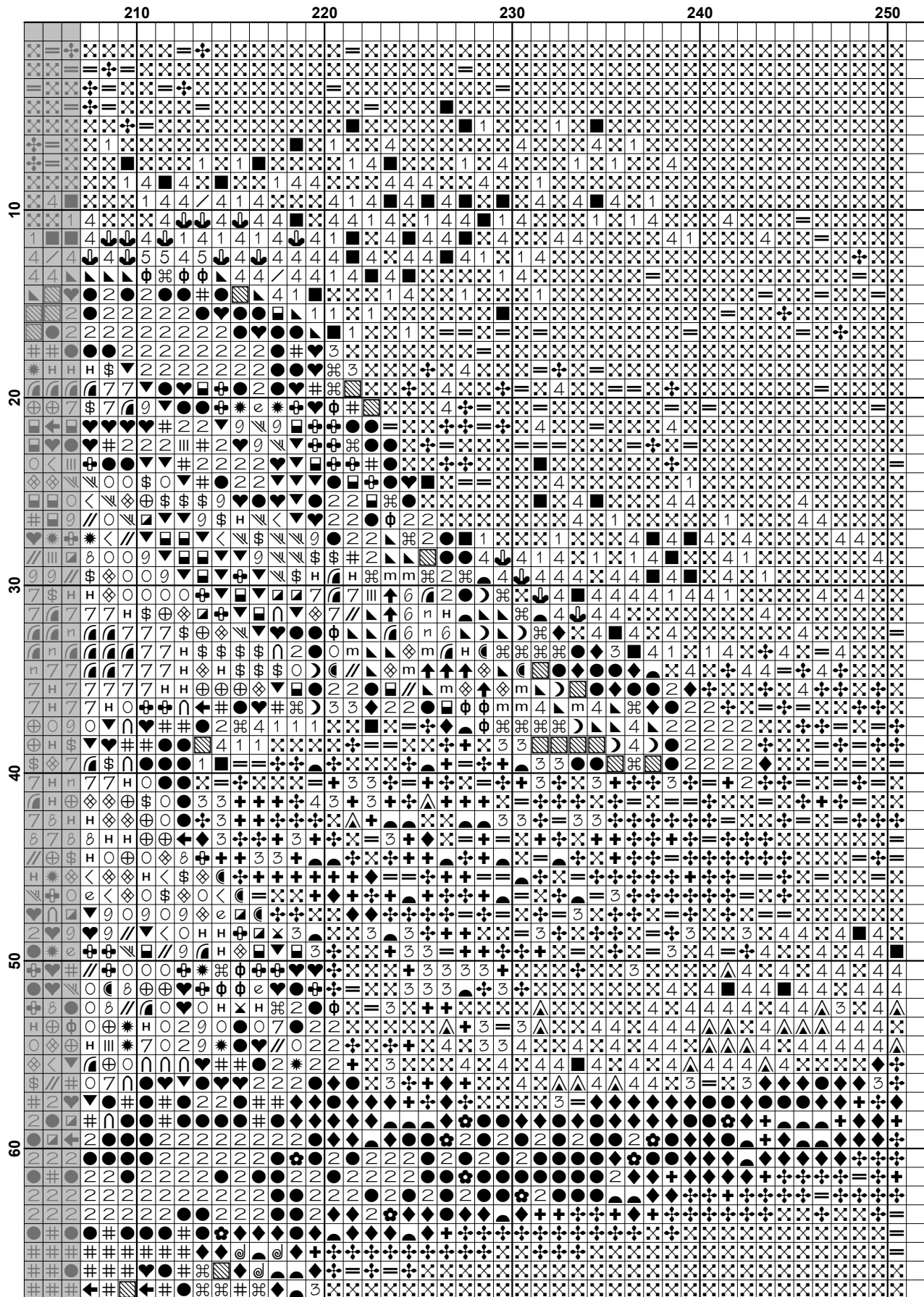
Website: www.artecy.com
Email: artecy@artecy.com or sls@comcen.com.au

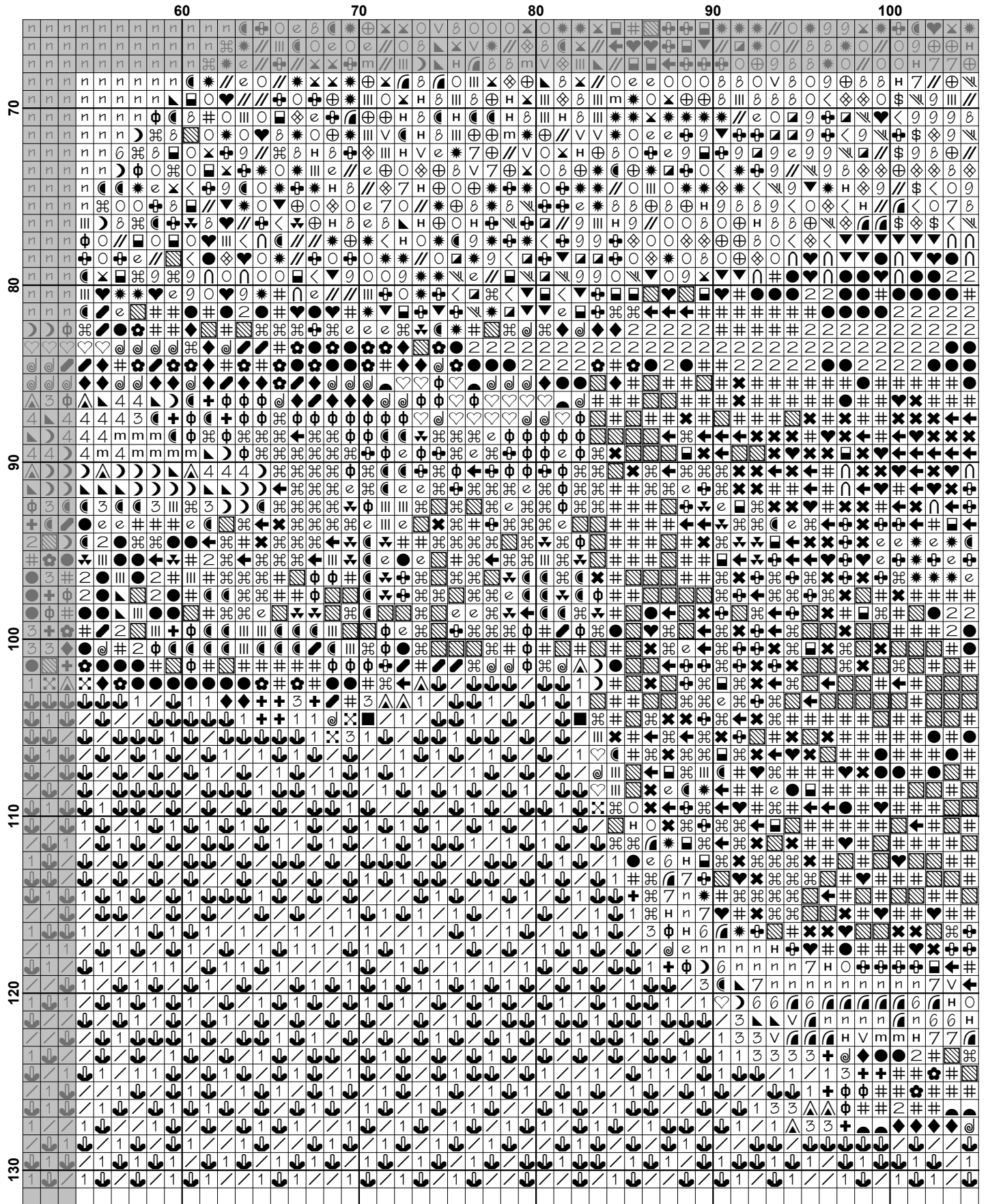
*Patterns are strictly for personal use only. It is against our copyright to make kits for sale from our designs or to sell, copy or redistribute this pattern in any form. You may not upload our patterns to any internet forums or groups or any other website. You may make 1 copy of this pattern for a working copy for your own personal use if needed.

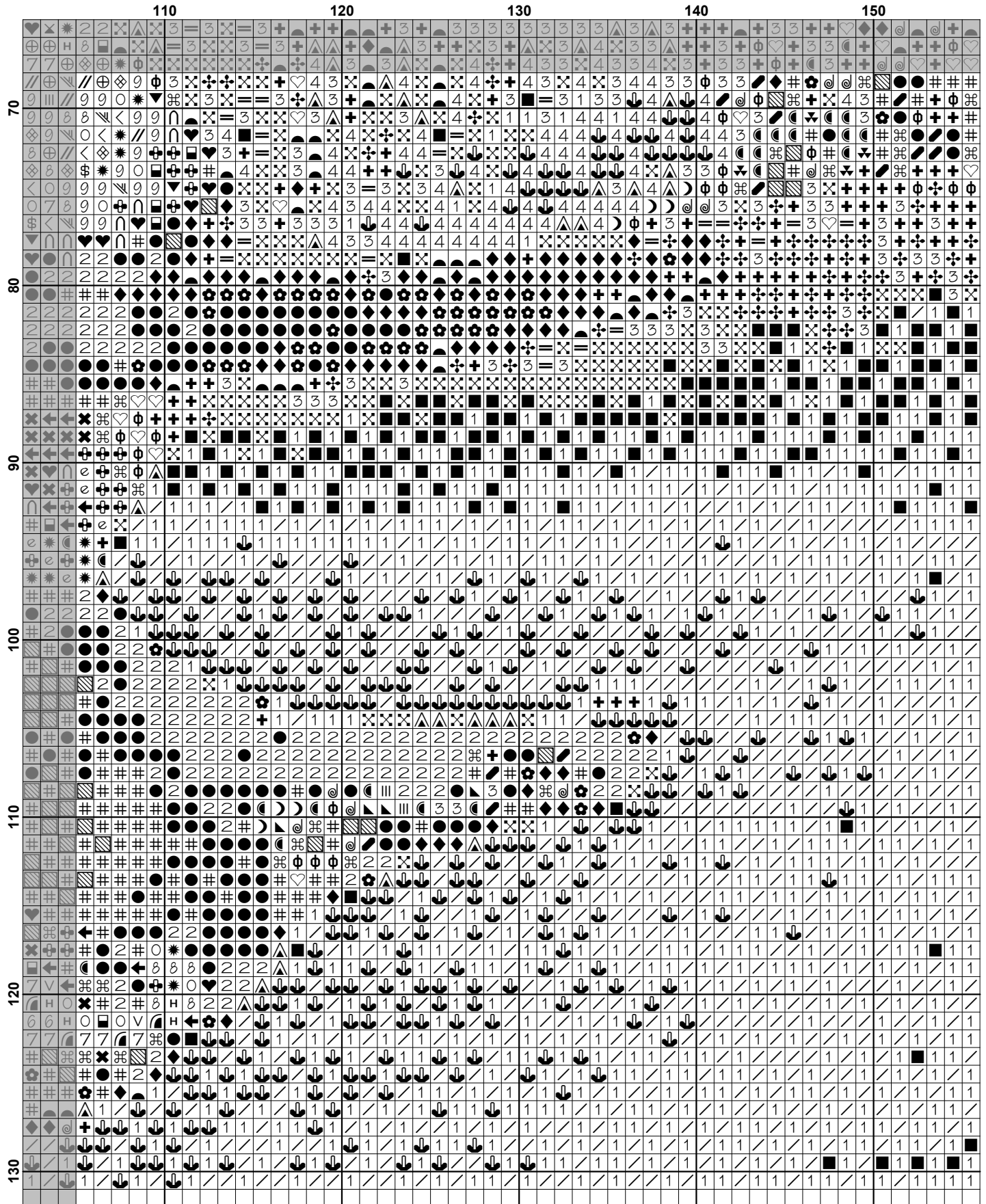


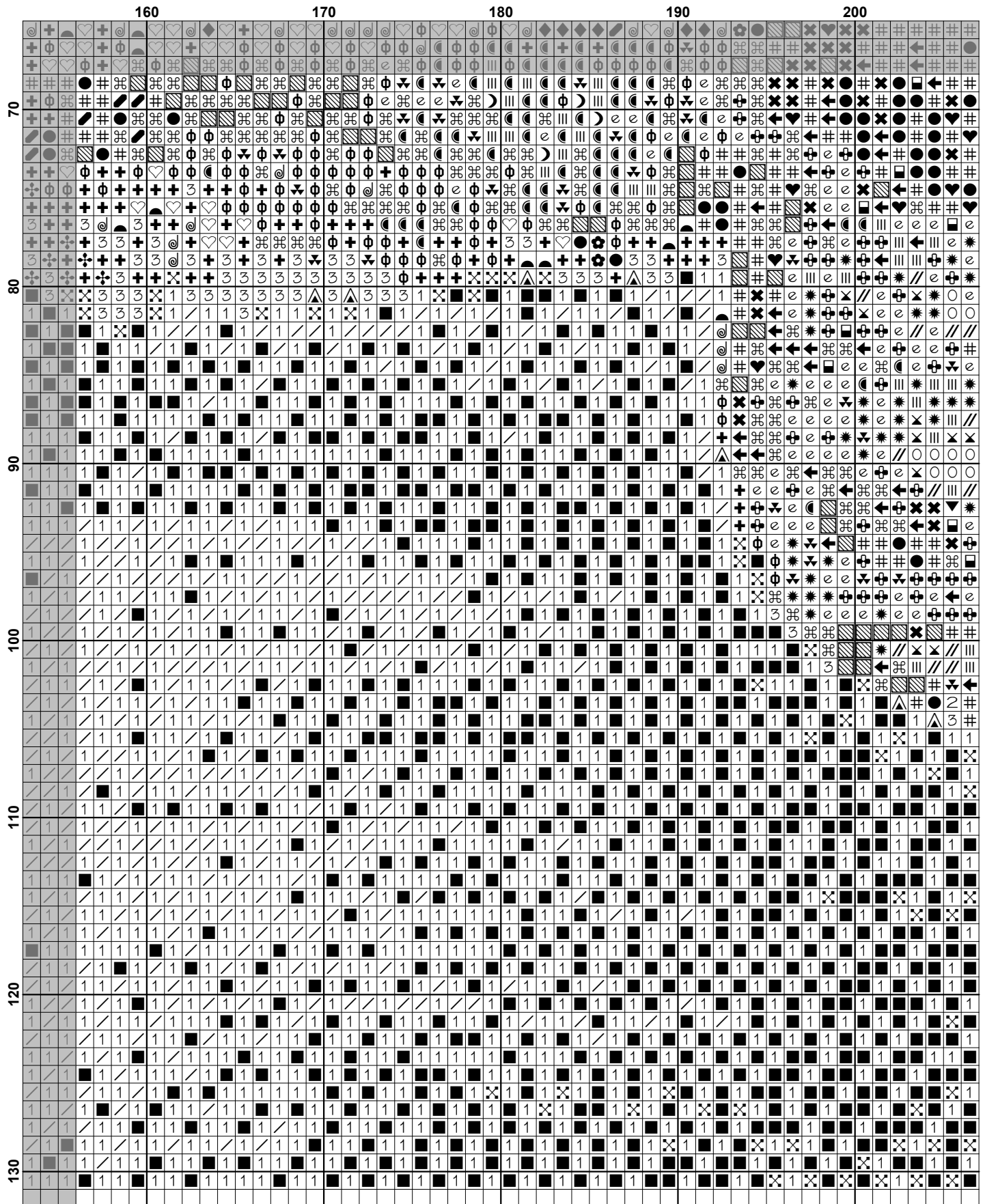


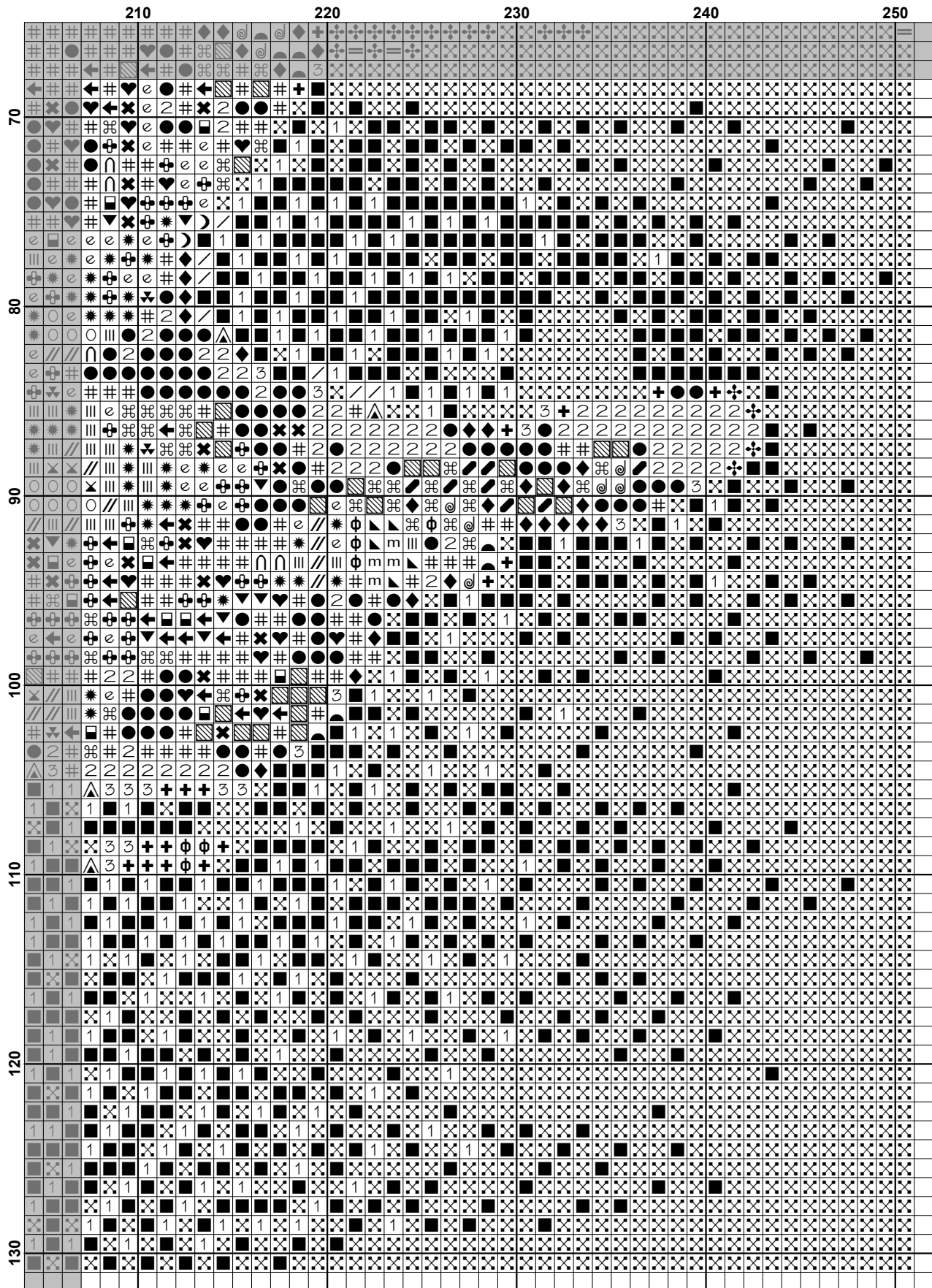
















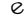






Pattern Name: Garganey Ducks
Designed By: Image by Asfloro - Fotolia
Company: Artecy Cross Stitch
Copyright: Copyright Artecy Cross Stitch. All rights Reserved.
Fabric: Aida 14, White
 250w X 130h Stitches
Size(s): 14 Count, 17-3/4w X 9-1/4h in
 16 Count, 15-5/8w X 8-1/8h in
 18 Count, 13-7/8w X 7-1/8h in

Floss Used for Full Stitches:

Symbol	Strands	Type	Number	Color
	2	DMC	156	Blue Violet-MD LT
	2	DMC	159	Gray Blue-LT
	2	DMC	160	Gray Blue-MD
	2	DMC	161	Gray Blue
	2	DMC	169	Pewter-LT
	2	DMC	300	Mahogany-VY DK
	2	DMC	301	Mahogany-MD
	2	DMC	310	Black
	2	DMC	317	Pewter Gray
	2	DMC	318	Steel Gray-LT
	2	DMC	356	Terra Cotta-MD
	2	DMC	402	Mahogany-VY LT
	2	DMC	407	Desert Sand-DK
	2	DMC	413	Pewter Gray-DK
	2	DMC	414	Steel Gray-DK
	2	DMC	415	Pearl Gray
	2	DMC	451	Shell Gray-DK
	2	DMC	452	Shell Gray-MD
	2	DMC	453	Shell Gray-LT
	2	DMC	535	Ash Gray-VY LT
	2	DMC	632	Desert Sand-UL VY DK
	2	DMC	754	Peach-LT
	2	DMC	758	Terra Cotta-VY LT
	2	DMC	794	Cornflower Blue-LT
	2	DMC	801	Coffee Brown-DK
	2	DMC	838	Beige Brown-VY DK
	2	DMC	839	Beige Brown-DK
	2	DMC	842	Beige Brown-VY LT
	2	DMC	844	Beaver Brown-UL DK
	2	DMC	898	Coffee Brown-VY DK
	2	DMC	902	Garnet-VY DK
	2	DMC	931	Antique Blue-MD
	2	DMC	932	Antique Blue-LT
	2	DMC	934	Black Avocado Green
	2	DMC	938	Coffee Brown-UL DK
	2	DMC	951	Tawny-LT
	2	DMC	975	Golden Brown-DK
	2	DMC	3021	Brown Gray-VY DK
	2	DMC	3064	Desert Sand
	2	DMC	3371	Black Brown
	2	DMC	3770	Tawny-VY LT
	2	DMC	3771	Terra Cotta-UL VY LT
	2	DMC	3772	Desert Sand-VY DK
	2	DMC	3778	Terra Cotta-LT
	2	DMC	3779	Terra Cotta-UL VY LT
	2	DMC	3787	Brown Gray-DK

Symbol	Strands	Type	Number	Color
	2	DMC	3790	Beige Gray-UL DK
	2	DMC	3799	Pewter Gray-VY DK
	2	DMC	3856	Mahogany-UL VY LT
	2	DMC	3857	Rosewood-DK
	2	DMC	3859	Rosewood-LT
	2	DMC	3860	Cocoa
	2	DMC	3861	Cocoa-LT
	2	DMC	3862	Mocha Beige-DK
	2	DMC	3863	Mocha Beige-MD
	2	DMC	3865	Winter White
	2	DMC	3866	Mocha Brown-UL VY LT

Notes:

The middle of this pattern can be found on page 3 and is 126 stitches across and 66 stitches down.

Pattern layout using page numbers in top left.






1 2 3 4 5
6 7 8 9 10

Usage Summary

Strands Per Skein: 6

Skein Length: 313.0 in

Type	Number	Full	Half	Quarter	Petite	Back(in)	Str(in)	Spec(in)	French	Bead	Skein Est.
DMC 156	156	1999	0	0	0	0.0	0.0	0.0	0	0	1.000
DMC 159	159	2514	0	0	0	0.0	0.0	0.0	0	0	2.000
DMC 160	160	4385	0	0	0	0.0	0.0	0.0	0	0	2.000
DMC 161	161	554	0	0	0	0.0	0.0	0.0	0	0	1.000
DMC 169	169	340	0	0	0	0.0	0.0	0.0	0	0	1.000
DMC 300	300	48	0	0	0	0.0	0.0	0.0	0	0	1.000
DMC 301	301	49	0	0	0	0.0	0.0	0.0	0	0	1.000
DMC 310	310	1399	0	0	0	0.0	0.0	0.0	0	0	1.000
DMC 317	317	827	0	0	0	0.0	0.0	0.0	0	0	1.000
DMC 318	318	1623	0	0	0	0.0	0.0	0.0	0	0	1.000
DMC 356	356	132	0	0	0	0.0	0.0	0.0	0	0	1.000
DMC 402	402	41	0	0	0	0.0	0.0	0.0	0	0	1.000
DMC 407	407	144	0	0	0	0.0	0.0	0.0	0	0	1.000
DMC 413	413	419	0	0	0	0.0	0.0	0.0	0	0	1.000
DMC 414	414	843	0	0	0	0.0	0.0	0.0	0	0	1.000
DMC 415	415	126	0	0	0	0.0	0.0	0.0	0	0	1.000
DMC 451	451	156	0	0	0	0.0	0.0	0.0	0	0	1.000
DMC 452	452	133	0	0	0	0.0	0.0	0.0	0	0	1.000
DMC 453	453	94	0	0	0	0.0	0.0	0.0	0	0	1.000
DMC 535	535	242	0	0	0	0.0	0.0	0.0	0	0	1.000
DMC 632	632	454	0	0	0	0.0	0.0	0.0	0	0	1.000
DMC 754	754	183	0	0	0	0.0	0.0	0.0	0	0	1.000
DMC 758	758	175	0	0	0	0.0	0.0	0.0	0	0	1.000
DMC 794	794	2072	0	0	0	0.0	0.0	0.0	0	0	1.000
DMC 801	801	148	0	0	0	0.0	0.0	0.0	0	0	1.000
DMC 838	838	424	0	0	0	0.0	0.0	0.0	0	0	1.000
DMC 839	839	740	0	0	0	0.0	0.0	0.0	0	0	1.000
DMC 842	842	64	0	0	0	0.0	0.0	0.0	0	0	1.000
DMC 844	844	235	0	0	0	0.0	0.0	0.0	0	0	1.000
DMC 898	898	141	0	0	0	0.0	0.0	0.0	0	0	1.000
DMC 902	902	269	0	0	0	0.0	0.0	0.0	0	0	1.000
DMC 931	931	480	0	0	0	0.0	0.0	0.0	0	0	1.000
DMC 932	932	3830	0	0	0	0.0	0.0	0.0	0	0	2.000
DMC 934	934	153	0	0	0	0.0	0.0	0.0	0	0	1.000
DMC 938	938	767	0	0	0	0.0	0.0	0.0	0	0	1.000
DMC 951	951	128	0	0	0	0.0	0.0	0.0	0	0	1.000
DMC 975	975	103	0	0	0	0.0	0.0	0.0	0	0	1.000
DMC 3021	3021	181	0	0	0	0.0	0.0	0.0	0	0	1.000
DMC 3064	3064	426	0	0	0	0.0	0.0	0.0	0	0	1.000
DMC 3371	3371	1037	0	0	0	0.0	0.0	0.0	0	0	1.000
DMC 3770	3770	257	0	0	0	0.0	0.0	0.0	0	0	1.000
DMC 3771	3771	153	0	0	0	0.0	0.0	0.0	0	0	1.000
DMC 3772	3772	399	0	0	0	0.0	0.0	0.0	0	0	1.000
DMC 3778	3778	55	0	0	0	0.0	0.0	0.0	0	0	1.000
DMC 3779	3779	147	0	0	0	0.0	0.0	0.0	0	0	1.000
DMC 3787	3787	444	0	0	0	0.0	0.0	0.0	0	0	1.000
DMC 3790	3790	63	0	0	0	0.0	0.0	0.0	0	0	1.000
DMC 3799	3799	540	0	0	0	0.0	0.0	0.0	0	0	1.000
DMC 3856	3856	48	0	0	0	0.0	0.0	0.0	0	0	1.000
DMC 3857	3857	182	0	0	0	0.0	0.0	0.0	0	0	1.000
DMC 3859	3859	203	0	0	0	0.0	0.0	0.0	0	0	1.000
DMC 3860	3860	362	0	0	0	0.0	0.0	0.0	0	0	1.000

Type	Number	Full	Half	Quarter	Petite	Back(in)	Str(in)	Spec(in)	French	Bead	Skein Est.
 DMC	3861	204	0	0	0	0.0	0.0	0.0	0	0	1.000
 DMC	3862	253	0	0	0	0.0	0.0	0.0	0	0	1.000
 DMC	3863	192	0	0	0	0.0	0.0	0.0	0	0	1.000
 DMC	3865	722	0	0	0	0.0	0.0	0.0	0	0	1.000
 DMC	3866	198	0	0	0	0.0	0.0	0.0	0	0	1.000