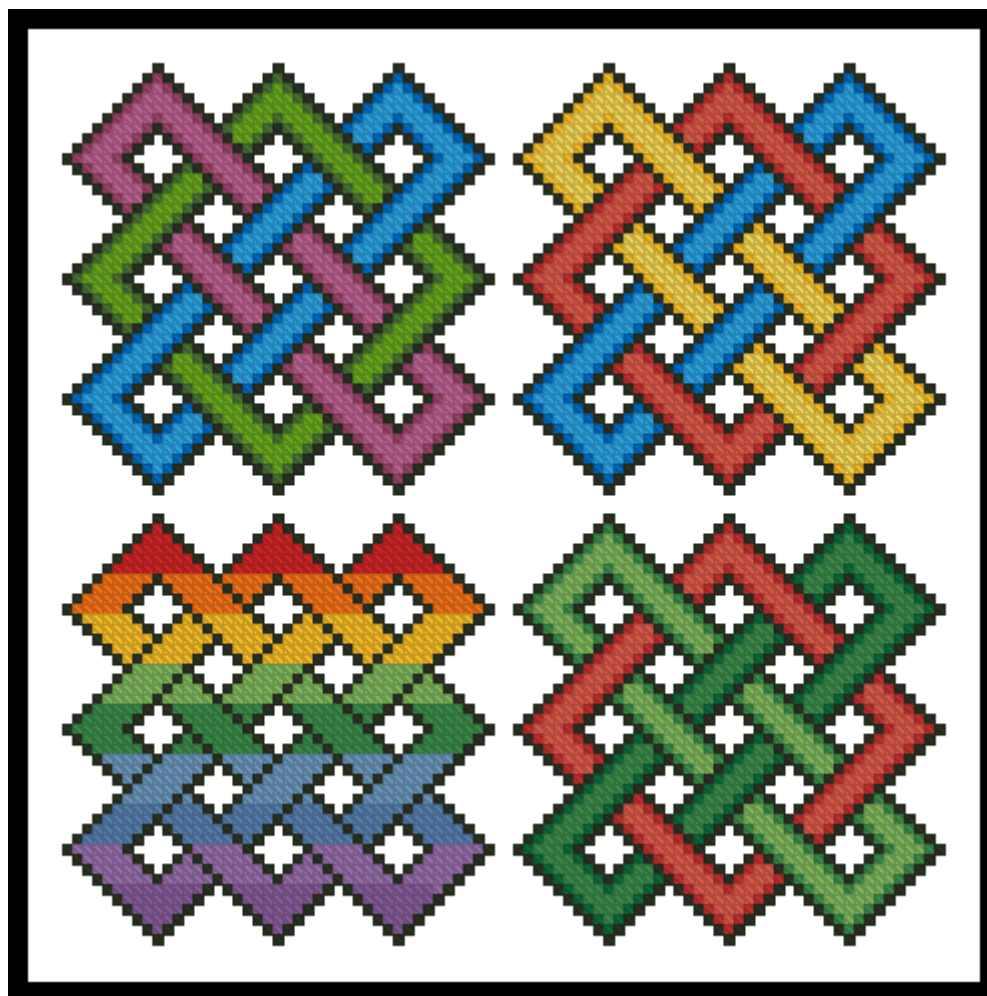


Little Celtic Designs 2



* Created from the Celtic Knot Font by www.Clanbadge.com.
Cross Stitch Design by Tereena Clarke.

Completed Size = 88w x 88h Total Stitches, each design is 43w x 43h
14 Count, 3.5w x 3.5h inches (9cm x 9cm) each
16 Count, 3w x 3h inches (8cm x 8cm) each
18 Count, 2.5w x 2.5h inches (6.5cm x 6.5cm) each
Uses 20 DMC total cotton colours. Only full cross stitches are used in this pattern.

Pattern Instructions

* This pattern can be worked on any fabric type, colour or count you prefer. To work out the size of the finished article, take the number of stitches wide and high and divide it by the count of your fabric (e.g. 14,16,18 count aida etc) to get the size in inches. Times it by 2.54 to get centimetres. We have the sizes in inches shown on the previous page. Also leave at least a few inches of fabric around each side of the design to assist in framing. The higher the fabric count the smaller the completed project will be.

* To put the pattern together look in the top and bottom corners. The page numbers in brackets show which page number it joins up to. Page 1 always starts at the top left hand side of the pattern. Our pages also have a shaded grey section. This indicates a 3 row overlap from adjoining pages to assist with reading the pattern. PLEASE DO NOT RESTITCH THIS AREA.

* You should begin at the centre of the pattern. To find the centre of the pattern it is just a matter of laying the pattern out and locating the arrows at the top and left hand side of the patterns, they are determined by dividing the stitch numbers wide and high in half. Where the two points meet in the middle, that is the centre.

* If you need more assistance to find the middle of your pattern or the page layout, please see the notes section on the colour symbol chart. The easiest way to stitch this pattern, as it has multiple pages, is to stitch one page at a time.

* We suggest using two strands of floss for each stitch and one strand for backstitching if the pattern calls for it.

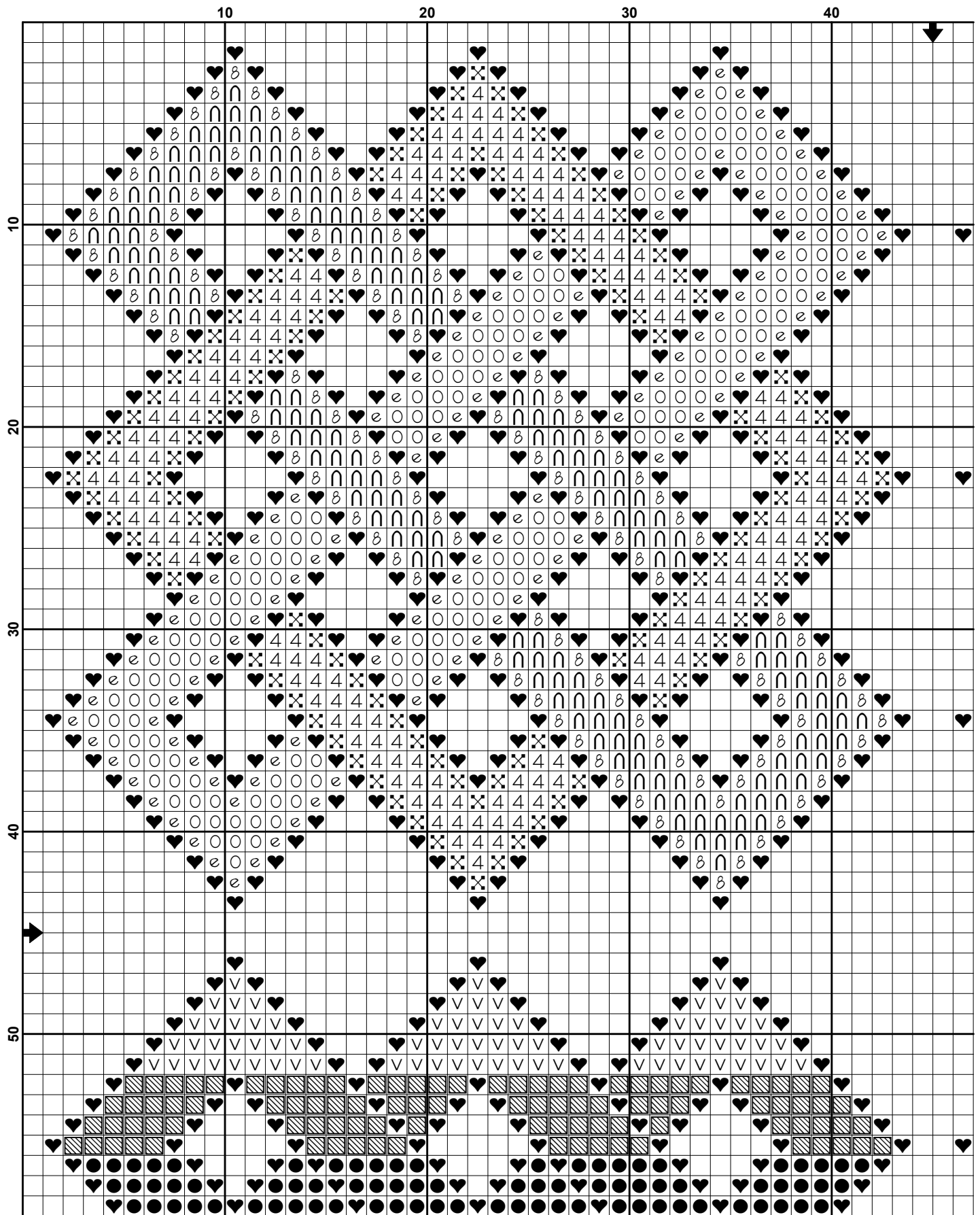
We hope you enjoy stitching our pattern.

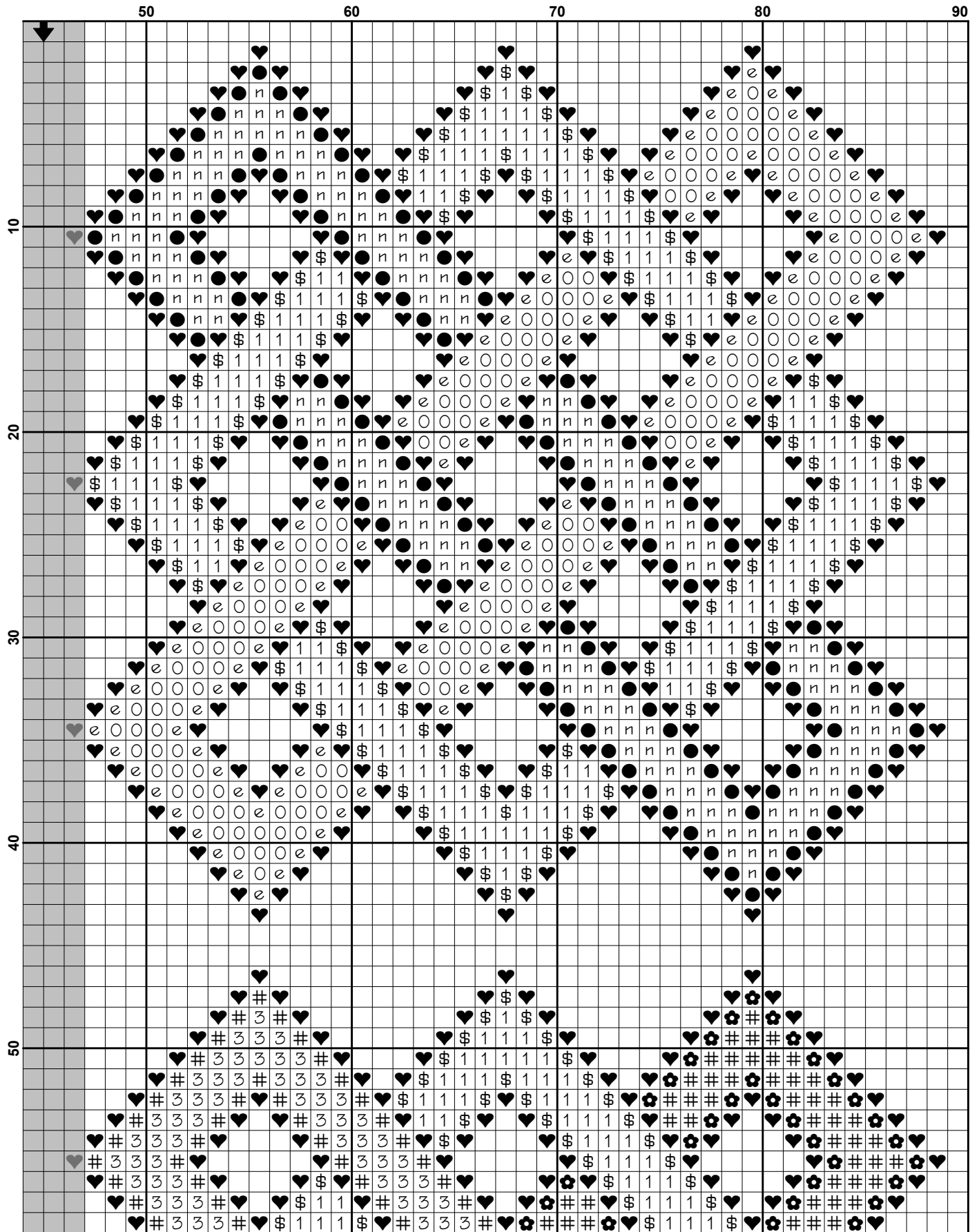
Thanks and Best Wishes
Tereena Clarke

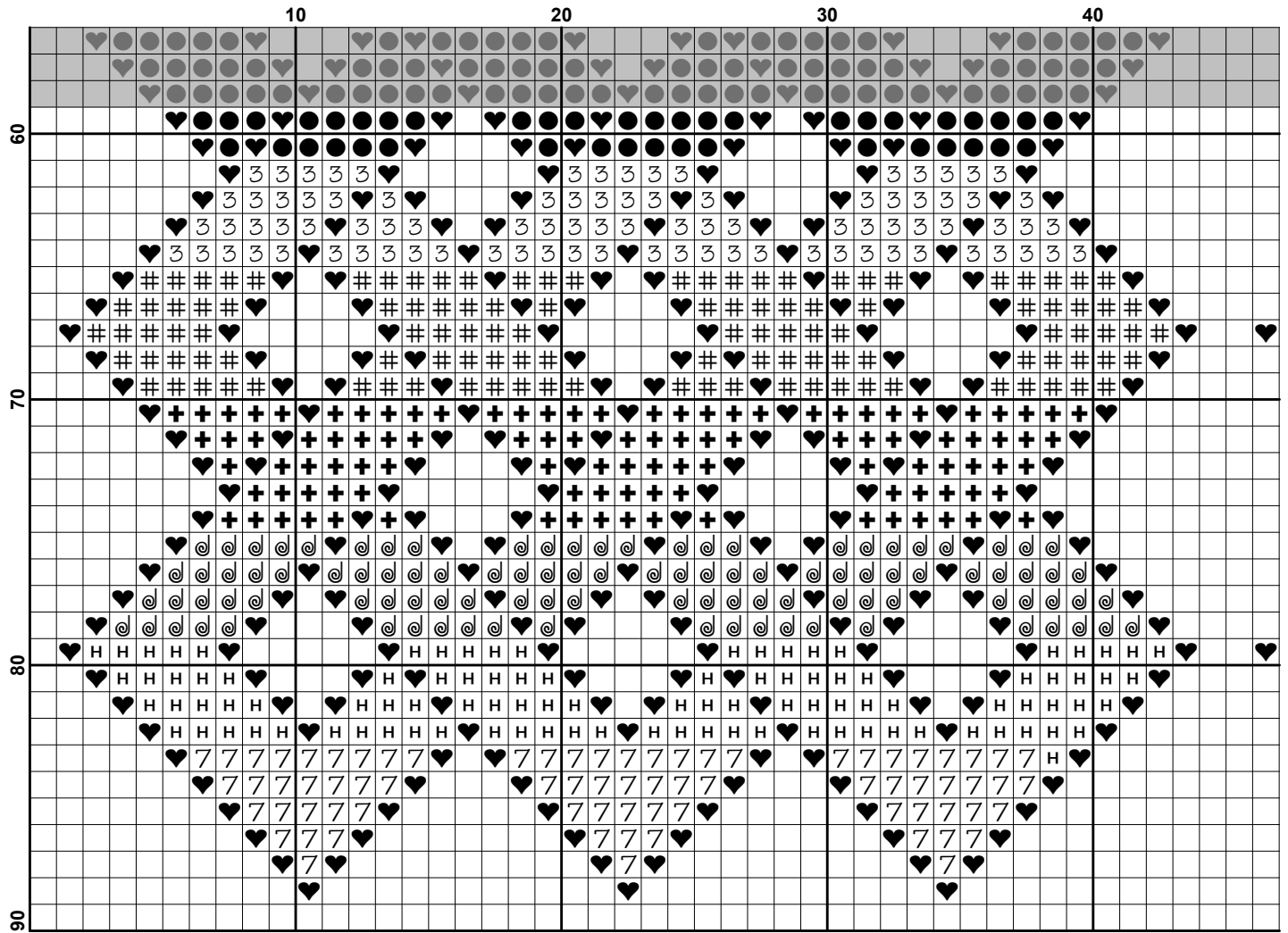
Artecy Cross Stitch
Po Box 3474
Tuggerah, NSW 2259
Australia

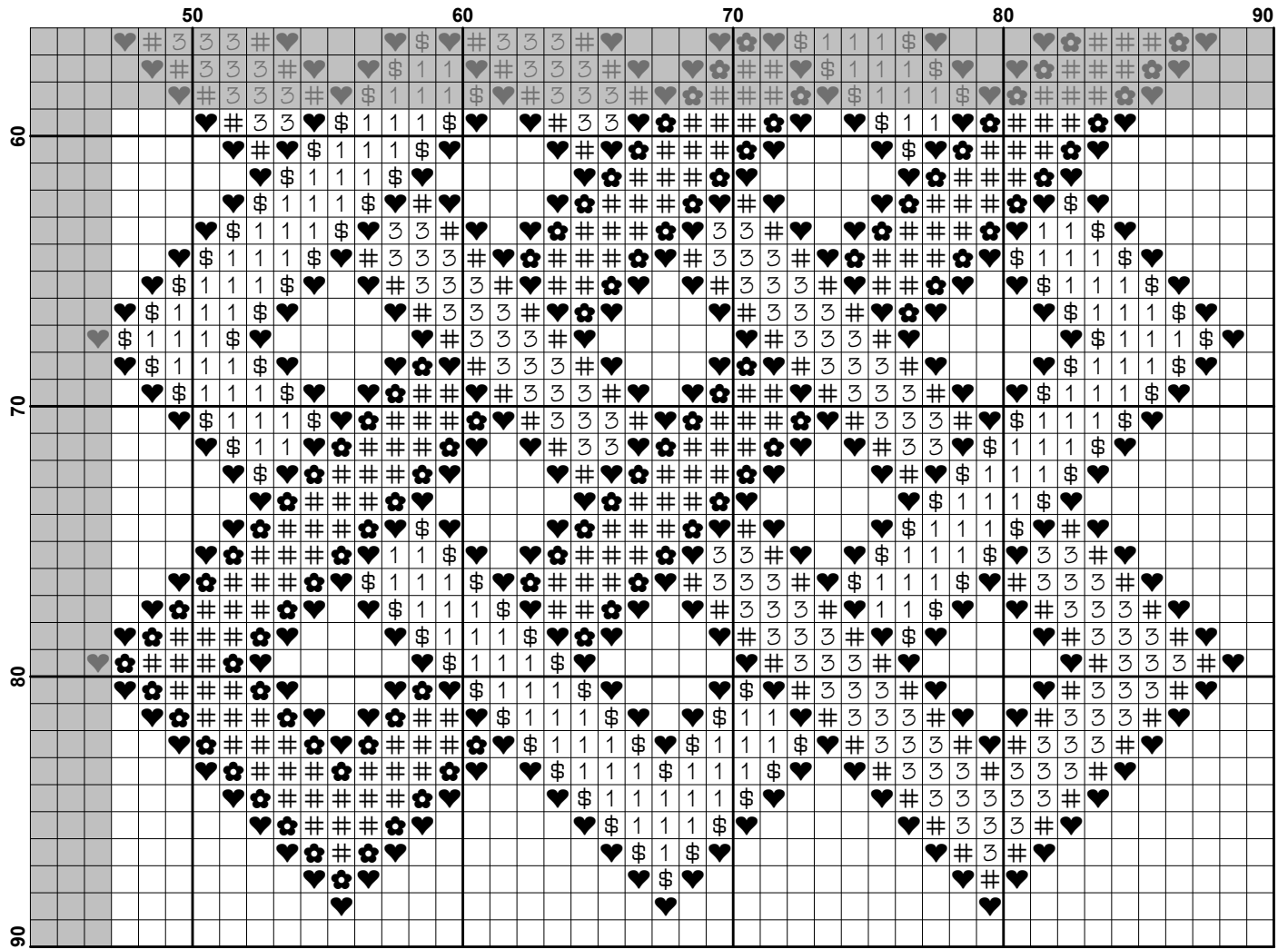
Websites: www.artecy.com and www.artecyshop.com
Email: artecy@artecy.com or stitch@artecyshop.com

*Patterns are strictly for personal use only. It is against our copyright to make kits for sale from our designs or to sell, copy or redistribute this pattern in any form. You may not upload our patterns to any internet forums or groups or any other website. You may make 1 copy of this pattern for a working copy for your own personal use if needed.





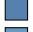

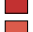

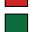
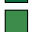


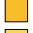



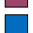
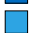










Pattern Name: Little Celtic Designs 2
Designed By: Celtic Knot Font from www.Clanbadge.com
Company: Artecy Cross Stitch
Copyright: Copyright Artecy Cross Stitch. All rights Reserved.
Fabric: Aida 14, White
 88w X 88h Stitches
Size(s): 14 Count, 6-1/4w X 6-1/4h in
 16 Count, 5-1/2w X 5-1/2h in
 18 Count, 4-7/8w X 4-7/8h in

Floss Used for Full Stitches:

Symbol	Strands	Type	Number	Color
 H	2	DMC	208	Lavender-VY DK
 ♥	2	DMC	310	Black
 @	2	DMC	322	Baby Blue-DK
 +	2	DMC	334	Baby Blue-MD
 \$	2	DMC	349	Coral-DK
 1	2	DMC	350	Coral-MD
 v	2	DMC	666	Christmas Red-BRT
 ☼	2	DMC	699	Christmas Green
 #	2	DMC	701	Christmas Green-LT
 3	2	DMC	703	Chartreuse
 ▨	2	DMC	740	Tangerine
 ●	2	DMC	742	Tangerine-LT
 n	2	DMC	743	Yellow-MD
 X	2	DMC	904	Parrot Green-VY DK
 4	2	DMC	906	Parrot Green-MD
 8	2	DMC	917	Plum-MD
 e	2	DMC	995	Electric Blue-DK
 0	2	DMC	996	Electric Blue-MD
 U	2	DMC	3607	Plum-LT
 7	2	DMC	3837	Lavender-UL DK

Notes:

The middle of this pattern can be found on page 1 and is 45 stitches across and 45 stitches down.

Pattern layout using page numbers in top left.

1 2
 3 4

Usage Summary

Strands Per Skein: 6

Skein Length: 313.0 in

Type	Number	Full	Half	Quarter	Petite	Back(in)	Str(in)	Spec(in)	French	Bead	Skein Est.
DMC 208	208	99	0	0	0	0.0	0.0	0.0	0	0	1.000
DMC 310	310	1344	0	0	0	0.0	0.0	0.0	0	0	1.000
DMC 322	322	102	0	0	0	0.0	0.0	0.0	0	0	1.000
DMC 334	334	105	0	0	0	0.0	0.0	0.0	0	0	1.000
DMC 349	349	240	0	0	0	0.0	0.0	0.0	0	0	1.000
DMC 350	350	344	0	0	0	0.0	0.0	0.0	0	0	1.000
DMC 666	666	75	0	0	0	0.0	0.0	0.0	0	0	1.000
DMC 699	699	120	0	0	0	0.0	0.0	0.0	0	0	1.000
DMC 701	701	408	0	0	0	0.0	0.0	0.0	0	0	1.000
DMC 703	703	259	0	0	0	0.0	0.0	0.0	0	0	1.000
DMC 740	740	98	0	0	0	0.0	0.0	0.0	0	0	1.000
DMC 742	742	240	0	0	0	0.0	0.0	0.0	0	0	1.000
DMC 743	743	172	0	0	0	0.0	0.0	0.0	0	0	1.000
DMC 904	904	120	0	0	0	0.0	0.0	0.0	0	0	1.000
DMC 906	906	172	0	0	0	0.0	0.0	0.0	0	0	1.000
DMC 917	917	120	0	0	0	0.0	0.0	0.0	0	0	1.000
DMC 995	995	240	0	0	0	0.0	0.0	0.0	0	0	1.000
DMC 996	996	344	0	0	0	0.0	0.0	0.0	0	0	1.000
DMC 3607	3607	172	0	0	0	0.0	0.0	0.0	0	0	1.000
DMC 3837	3837	74	0	0	0	0.0	0.0	0.0	0	0	1.000