

# Artecy

## CROSS STITCH

### Mini Christmas Penguin



\* Original image copyright of Moini - Pixabay.  
Cross Stitch Design by Tereena Clarke.

Completed Size = 80w X 96h Stitches

14 Count, 6w X 7h inches

16 Count, 5w X 6h inches

18 Count, 4.5w X 5.5h inches

Uses 19 DMC cotton colours. Only full cross stitches are used in this pattern.

Copyright of Artecy Cross Stitch

[www.artecy.com](http://www.artecy.com)  
[www.artecyshop.com](http://www.artecyshop.com)

# *Pattern Instructions*

\* This pattern can be worked on any fabric type, colour or count you prefer. To work out the size of the finished article, take the number of stitches wide and high and divide it by the count of your fabric (e.g. 14,16,18 count aida etc) to get the size in inches. Times it by 2.54 to get centimetres. We have the sizes in inches shown on the previous page. Also leave at least a few inches of fabric around each side of the design to assist in framing. The higher the fabric count the smaller the completed project will be.

\* To put the pattern together look in the top and bottom corners. The page numbers in brackets show which page number it joins up to. Page 1 always starts at the top left hand side of the pattern. Our pages also have a shaded grey section. This indicates a 3 row overlap from adjoining pages to assist with reading the pattern. PLEASE DO NOT RESTITCH THIS AREA.

\* You should begin at the centre of the pattern. To find the centre of the pattern it is just a matter of laying the pattern out and locating the arrows at the top and left hand side of the patterns, they are determined by dividing the stitch numbers wide and high in half. Where the two points meet in the middle, that is the centre.

\* If you need more assistance to find the middle of your pattern or the page layout, please see the notes section on the colour symbol chart. The easiest way to stitch this pattern, as it has multiple pages, is to stitch one page at a time.

\* We suggest using two strands of floss for each stitch and one strand for backstitching if the pattern calls for it.

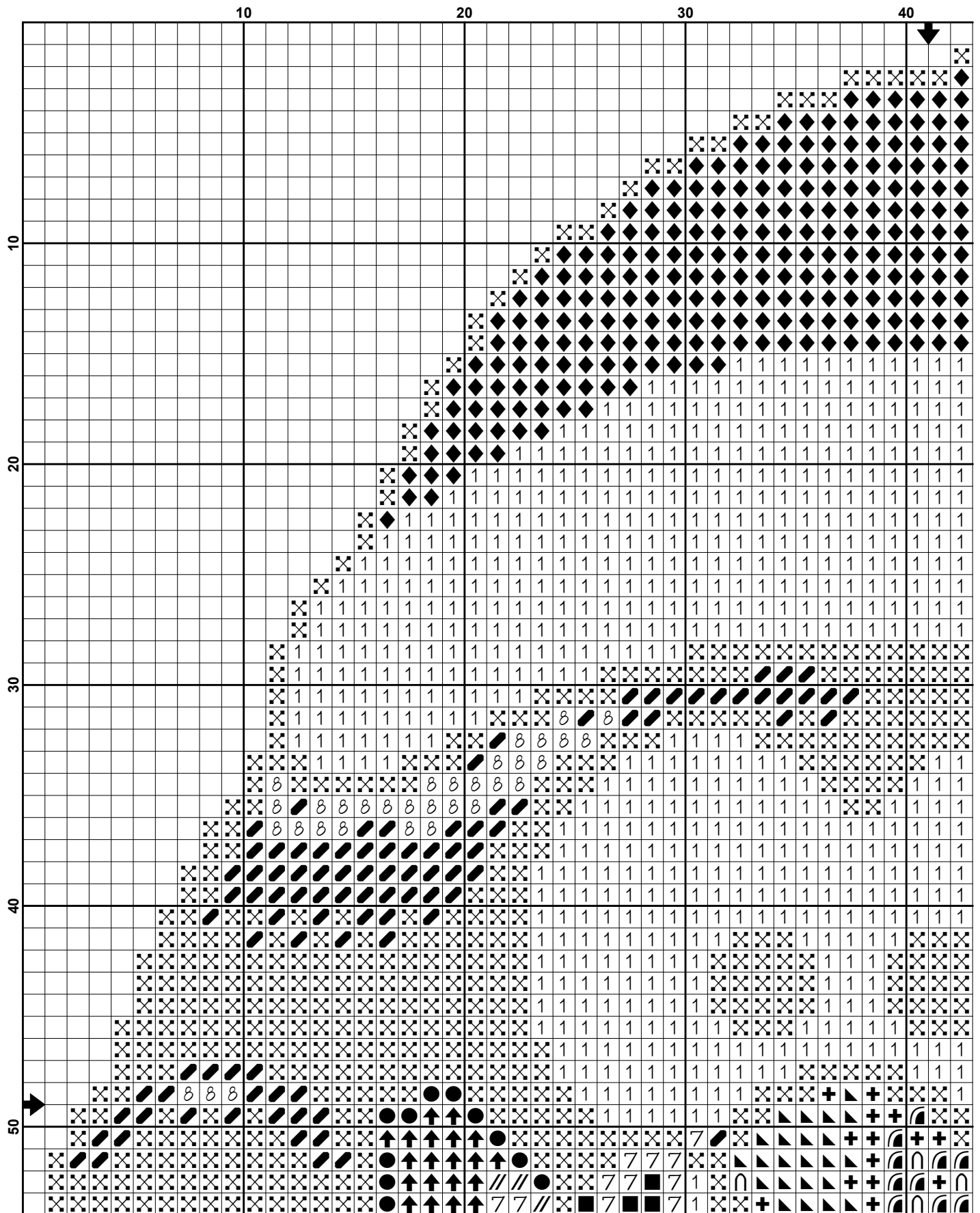
We hope you enjoy stitching our pattern.

Thanks and Best Wishes  
Tereena Clarke

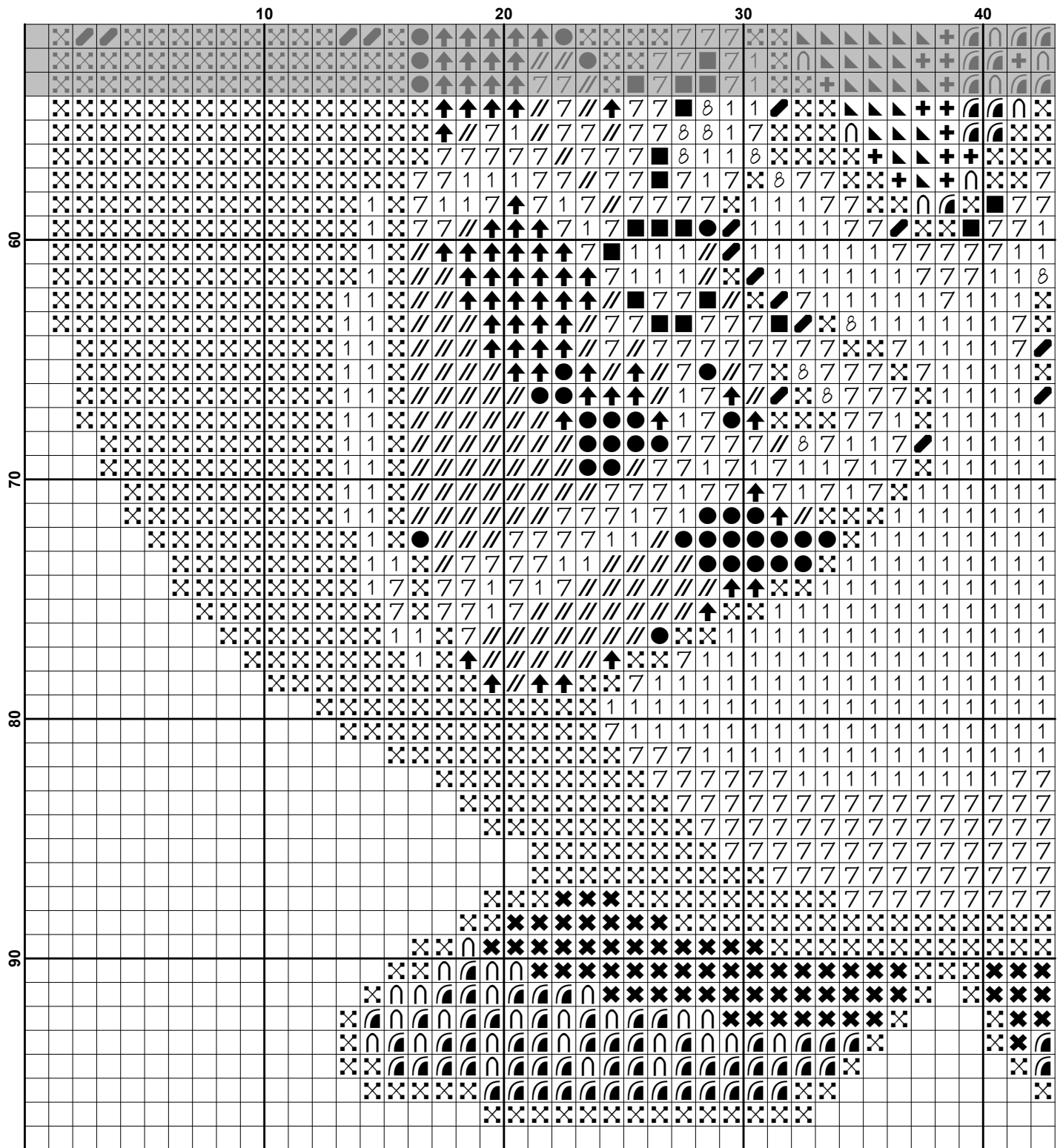
Artecy Cross Stitch  
Po Box 3474  
Tuggerah, NSW 2259  
Australia

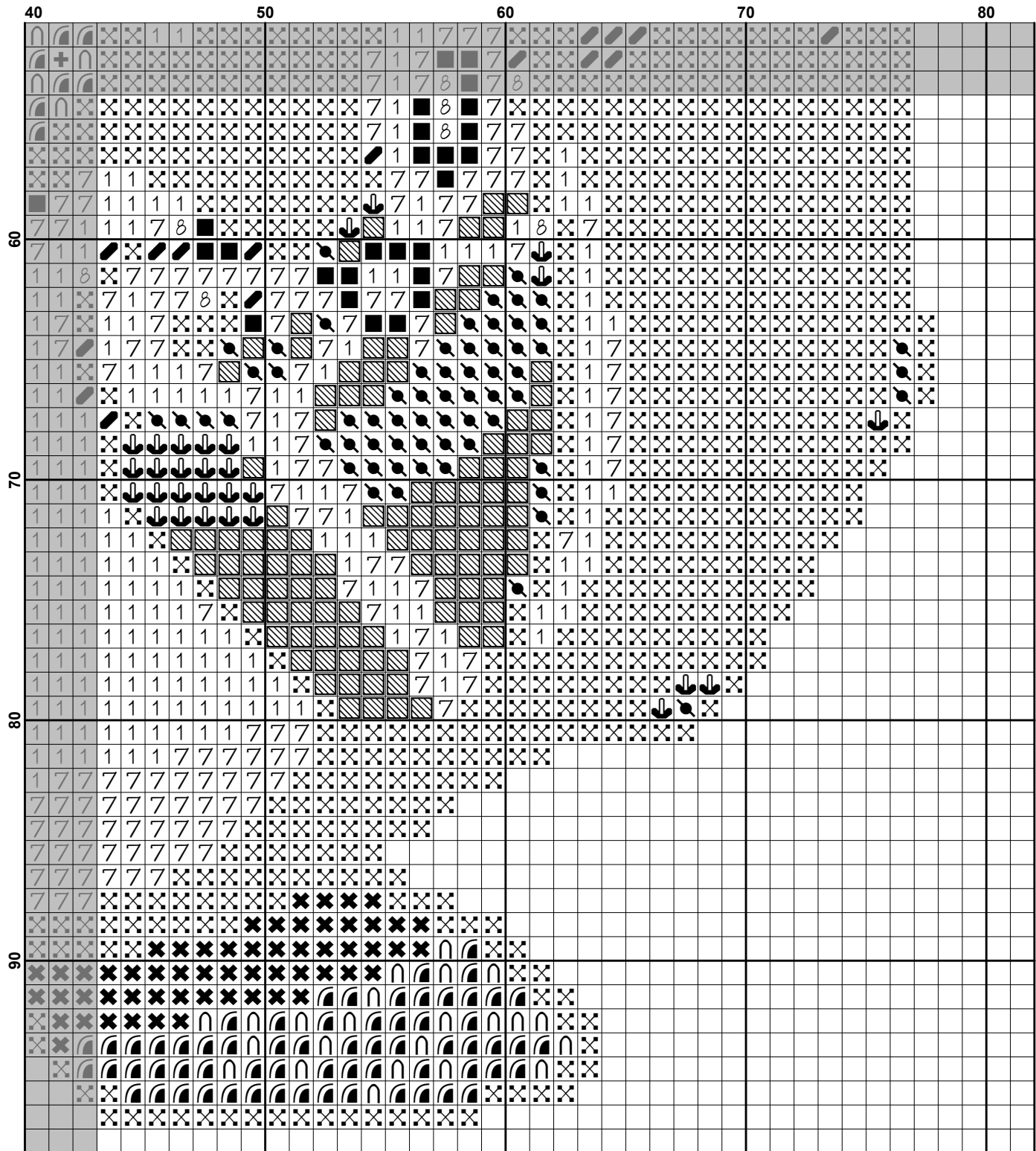
Websites: [www.artecy.com](http://www.artecy.com) and [www.artecyshop.com](http://www.artecyshop.com)  
Email: [artecy@artecy.com](mailto:artecy@artecy.com) or [stitch@artecyshop.com](mailto:stitch@artecyshop.com)

\*Patterns are strictly for personal use only. It is against our copyright to make kits for sale from our designs or to sell, copy or redistribute this pattern in any form. You may not upload our patterns to any internet forums or groups or any other website. You may make 1 copy of this pattern for a working copy for your own personal use if needed.




























**Pattern Name:** Mini Christmas Penguin  
**Designed By:** Image by Moini - Pixabay  
**Company:** Artecy Cross Stitch  
**Copyright:** Copyright Artecy Cross Stitch. All rights Reserved.  
**Fabric:** Aida 14, White  
 80w X 96h Stitches  
**Size(s):** 14 Count, 5-5/8w X 6-3/4h in  
 16 Count, 5w X 6h in  
 18 Count, 4-3/8w X 5-1/4h in

**Floss Used for Full Stitches:**

Symbol	Strands	Type	Number	Color
	2	DMC	169	Pewter-LT
	2	DMC	310	Black
	2	DMC	321	Christmas Red
	2	DMC	400	Mahogany-DK
	2	DMC	413	Pewter Gray-DK
	2	DMC	666	Christmas Red-BRT
	2	DMC	720	Orange Spice-DK
	2	DMC	728	Topaz
	2	DMC	740	Tangerine
	2	DMC	741	Tangerine-MD
	2	DMC	762	Pearl Gray-VY LT
	2	DMC	904	Parrot Green-VY DK
	2	DMC	906	Parrot Green-MD
	2	DMC	907	Parrot Green-LT
	2	DMC	995	Electric Blue-DK
	2	DMC	996	Electric Blue-MD
	2	DMC	3799	Pewter Gray-VY DK
	2	DMC	3843	Electric Blue
	2	DMC	3865	Winter White

**Notes:**

The middle of this pattern can be found on page 1 and is 41 stitches across and 49 stitches down.

Pattern layout using page numbers in top left.

1 2  
 3 4

**Usage Summary**

**Strands Per Skein:** 6

**Skein Length:** 313.0 in

Type	Number	Full	Half	Quarter	Petite	Back(in)	Str(in)	Spec(in)	French	Bead	Skein Est.
■ DMC	169	43	0	0	0	0.0	0.0	0.0	0	0	1.000
■ DMC	310	1993	0	0	0	0.0	0.0	0.0	0	0	1.000
■ DMC	321	39	0	0	0	0.0	0.0	0.0	0	0	1.000
■ DMC	400	116	0	0	0	0.0	0.0	0.0	0	0	1.000
■ DMC	413	57	0	0	0	0.0	0.0	0.0	0	0	1.000
■ DMC	666	602	0	0	0	0.0	0.0	0.0	0	0	1.000
■ DMC	720	135	0	0	0	0.0	0.0	0.0	0	0	1.000
■ DMC	728	32	0	0	0	0.0	0.0	0.0	0	0	1.000
■ DMC	740	57	0	0	0	0.0	0.0	0.0	0	0	1.000
■ DMC	741	22	0	0	0	0.0	0.0	0.0	0	0	1.000
■ DMC	762	351	0	0	0	0.0	0.0	0.0	0	0	1.000
■ DMC	904	29	0	0	0	0.0	0.0	0.0	0	0	1.000
■ DMC	906	63	0	0	0	0.0	0.0	0.0	0	0	1.000
■ DMC	907	107	0	0	0	0.0	0.0	0.0	0	0	1.000
■ DMC	995	43	0	0	0	0.0	0.0	0.0	0	0	1.000
■ DMC	996	116	0	0	0	0.0	0.0	0.0	0	0	1.000
■ DMC	3799	140	0	0	0	0.0	0.0	0.0	0	0	1.000
■ DMC	3843	77	0	0	0	0.0	0.0	0.0	0	0	1.000
■ DMC	3865	1594	0	0	0	0.0	0.0	0.0	0	0	1.000