

## Mini Easter Penguin



\* Original image copyright of Moini - Pixabay.  
Cross Stitch Design by Tereena Clarke.

Completed Size = 80w X 110h Stitches

14 Count, 6w X 8h inches (15cm x 20cm)

16 Count, 5w X 7h inches (13cm x 18cm)

18 Count, 4.5w X 6.5h inches (11cm x 17cm)

Uses 20 DMC cotton colours. Only full cross stitches are used in this pattern.

# *Pattern Instructions*

\* This pattern can be worked on any fabric type, colour or count you prefer. To work out the size of the finished article, take the number of stitches wide and high and divide it by the count of your fabric (e.g. 14,16,18 count aida etc) to get the size in inches. Times it by 2.54 to get centimetres. We have the sizes in inches shown on the previous page. Also leave at least a few inches of fabric around each side of the design to assist in framing. The higher the fabric count the smaller the completed project will be.

\* To put the pattern together look in the top and bottom corners. The page numbers in brackets show which page number it joins up to. Page 1 always starts at the top left hand side of the pattern. Our pages also have a shaded grey section. This indicates a 3 row overlap from adjoining pages to assist with reading the pattern. PLEASE DO NOT RESTITCH THIS AREA.

\* You should begin at the centre of the pattern. To find the centre of the pattern it is just a matter of laying the pattern out and locating the arrows at the top and left hand side of the patterns, they are determined by dividing the stitch numbers wide and high in half. Where the two points meet in the middle, that is the centre.

\* If you need more assistance to find the middle of your pattern or the page layout, please see the notes section on the colour symbol chart. The easiest way to stitch this pattern, as it has multiple pages, is to stitch one page at a time.

\* We suggest using two strands of floss for each stitch and one strand for backstitching if the pattern calls for it.

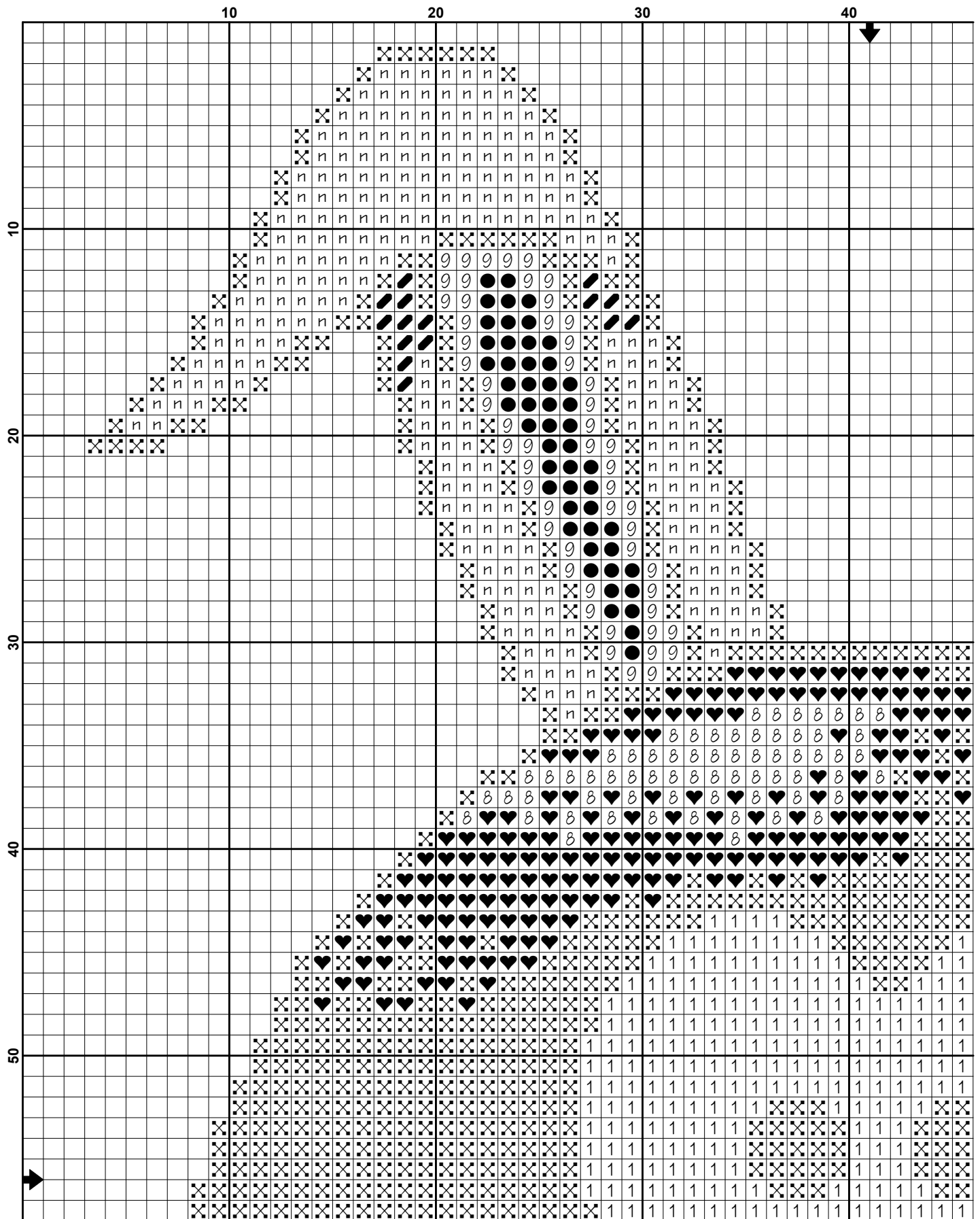
We hope you enjoy stitching our pattern.

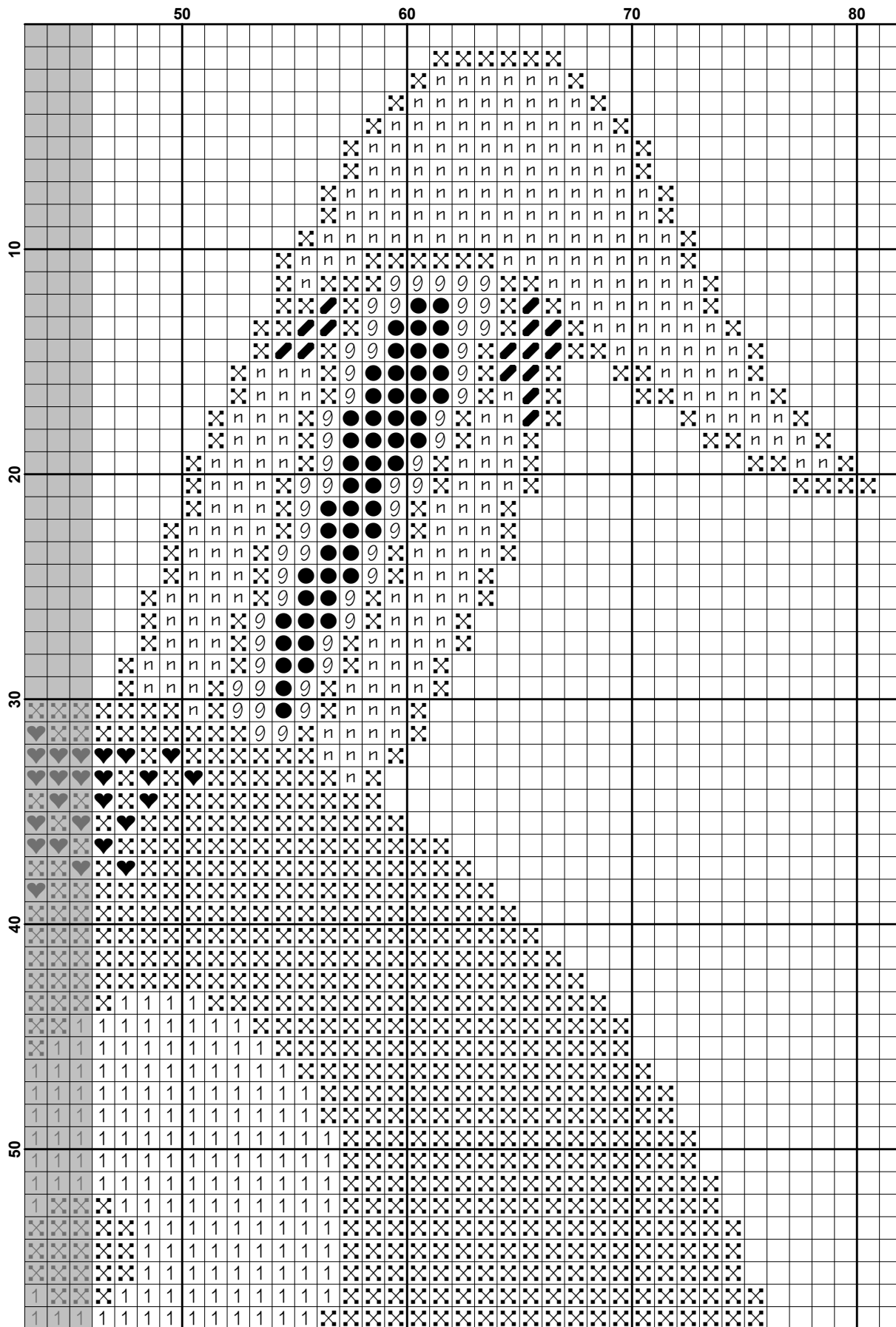
Thanks and Best Wishes  
Tereena Clarke

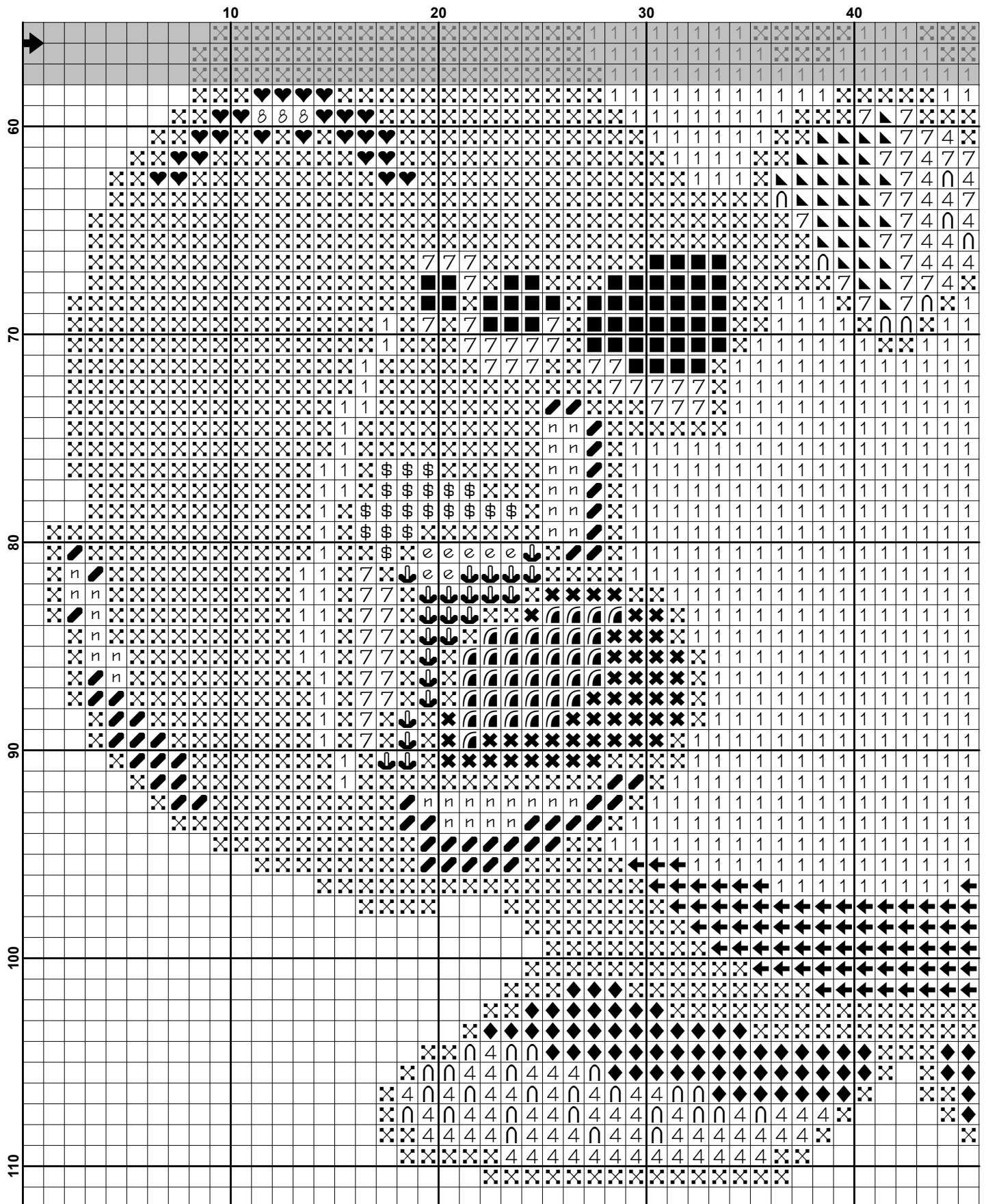
Artecy Cross Stitch  
Po Box 3474  
Tuggerah, NSW 2259  
Australia

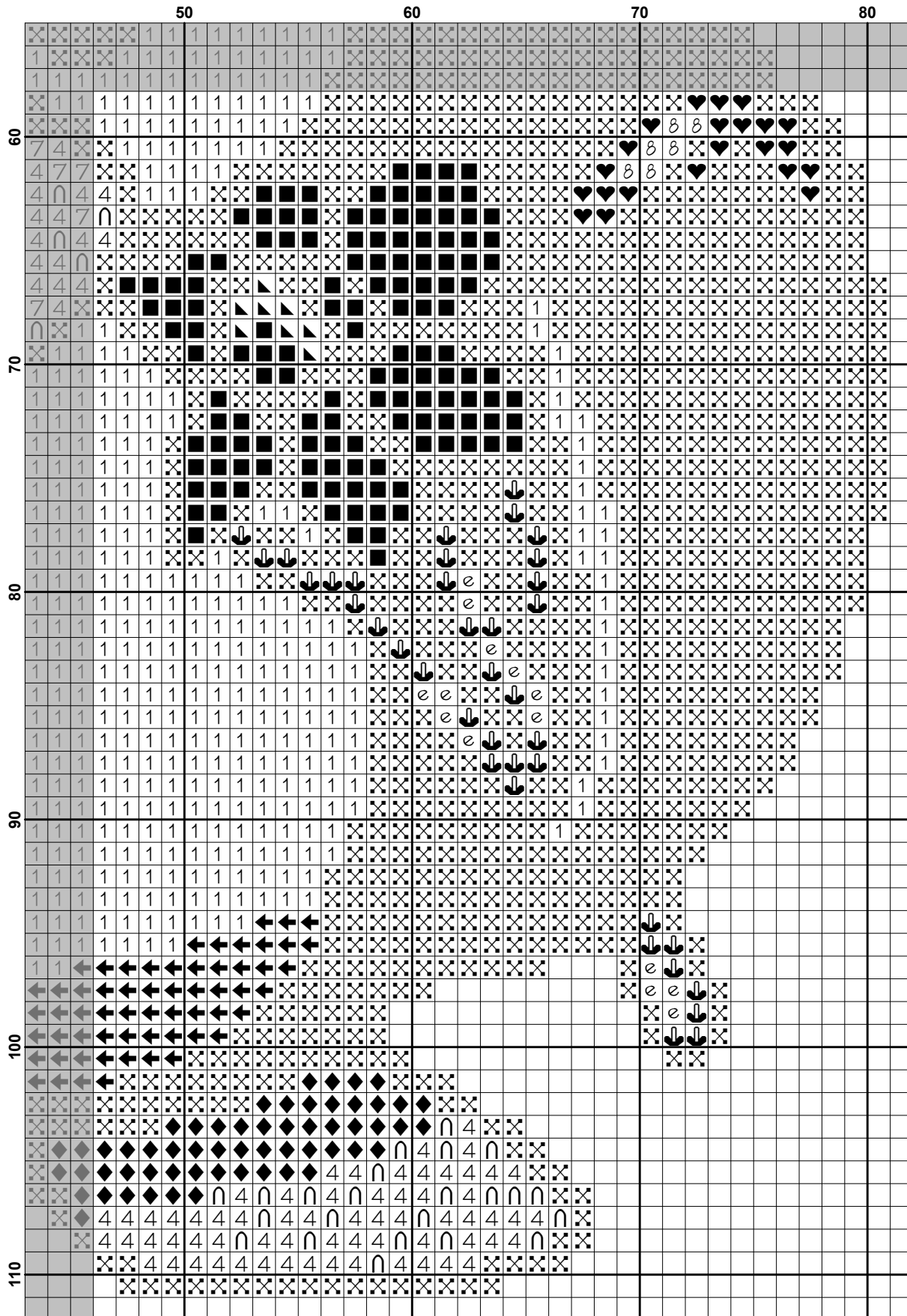
Websites: [www.artecy.com](http://www.artecy.com) and [www.artecyshop.com](http://www.artecyshop.com)  
Email: [artecy@artecy.com](mailto:artecy@artecy.com) or [stitch@artecyshop.com](mailto:stitch@artecyshop.com)

\*Patterns are strictly for personal use only. It is against our copyright to make kits for sale from our designs or to sell, copy or redistribute this pattern in any form. You may not upload our patterns to any internet forums or groups or any other website. You may make 1 copy of this pattern for a working copy for your own personal use if needed.























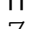







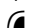

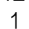







**Pattern Name:** Mini Easter Penguin  
**Designed By:** Image by Moini - Pixabay  
**Company:** Artecy Cross Stitch  
**Copyright:** Copyright Artecy Cross Stitch. All rights Reserved.  
**Fabric:** Aida 14, White  
 80w X 110h Stitches  
**Size(s):** 14 Count, 5-5/8w X 7-3/4h in  
 16 Count, 5w X 6-7/8h in  
 18 Count, 4-3/8w X 6h in

**Floss Used for Full Stitches:**

Symbol	Strands	Type	Number	Color
		2	DMC 300	Mahogany-VY DK
	n	2	DMC 301	Mahogany-MD
		2	DMC 307	Lemon
		2	DMC 310	Black
		2	DMC 400	Mahogany-DK
	8	2	DMC 413	Pewter Gray-DK
		2	DMC 606	Bright Orange-Red
		2	DMC 700	Christmas Green-BRT
	e	2	DMC 702	Kelly Green
	\$	2	DMC 718	Plum
	4	2	DMC 720	Orange Spice-DK
		2	DMC 728	Topaz
		2	DMC 740	Tangerine
	7	2	DMC 741	Tangerine-MD
		2	DMC 760	Salmon
		2	DMC 762	Pearl Gray-VY LT
	9	2	DMC 3328	Salmon-DK
		2	DMC 3799	Pewter Gray-VY DK
		2	DMC 3801	Christmas Red-LT
	1	2	DMC 3865	Winter White

**Notes:**

The middle of this pattern can be found on page 1 and is 41 stitches across and 56 stitches down.

Pattern layout using page numbers in top left.

1 2  
 3 4

**Usage Summary**

**Strands Per Skein:** 6

**Skein Length:** 313.0 in

Type	Number	Full	Half	Quarter	Petite	Back(in)	Str(in)	Spec(in)	French	Bead	Skein Est.
■ DMC	300	81	0	0	0	0.0	0.0	0.0	0	0	1.000
■ DMC	301	530	0	0	0	0.0	0.0	0.0	0	0	1.000
■ DMC	307	184	0	0	0	0.0	0.0	0.0	0	0	1.000
■ DMC	310	2812	0	0	0	0.0	0.0	0.0	0	0	2.000
■ DMC	400	117	0	0	0	0.0	0.0	0.0	0	0	1.000
■ DMC	413	75	0	0	0	0.0	0.0	0.0	0	0	1.000
■ DMC	606	48	0	0	0	0.0	0.0	0.0	0	0	1.000
■ DMC	700	61	0	0	0	0.0	0.0	0.0	0	0	1.000
■ DMC	702	21	0	0	0	0.0	0.0	0.0	0	0	1.000
■ DMC	718	20	0	0	0	0.0	0.0	0.0	0	0	1.000
■ DMC	720	136	0	0	0	0.0	0.0	0.0	0	0	1.000
■ DMC	728	40	0	0	0	0.0	0.0	0.0	0	0	1.000
■ DMC	740	57	0	0	0	0.0	0.0	0.0	0	0	1.000
■ DMC	741	62	0	0	0	0.0	0.0	0.0	0	0	1.000
■ DMC	760	102	0	0	0	0.0	0.0	0.0	0	0	1.000
■ DMC	762	115	0	0	0	0.0	0.0	0.0	0	0	1.000
■ DMC	3328	108	0	0	0	0.0	0.0	0.0	0	0	1.000
■ DMC	3799	247	0	0	0	0.0	0.0	0.0	0	0	1.000
■ DMC	3801	36	0	0	0	0.0	0.0	0.0	0	0	1.000
■ DMC	3865	1086	0	0	0	0.0	0.0	0.0	0	0	1.000