

Artecy

CROSS STITCH

Mini June Flowers in Radiance

Adapted from Artwork by Albert Williams



* Original image© Albert Williams - Licensed through Bridgeman Art Library
Cross Stitch Design by Tereena Clarke.

Completed Size = 196w x 240h Stitches

14 Count, 14w x 17.5h inches (36cm x 44cm)

16 Count, 12.5w x 15h inches (32cm x 38cm)

18 Count, 11w x 13.5h inches (28cm x 34cm)

Uses 39 DMC cotton colours. Only full cross stitches are used in this pattern.

Pattern Instructions

* This pattern can be worked on any fabric type, colour or count you prefer. To work out the size of the finished article, take the number of stitches wide and high and divide it by the count of your fabric (e.g. 14,16,18 count aida etc) to get the size in inches. Times it by 2.54 to get centimetres. We have the sizes in inches shown on the previous page. Also leave at least a few inches of fabric around each side of the design to assist in framing. The higher the fabric count the smaller the completed project will be.

* To put the pattern together look in the top and bottom corners. The page numbers in brackets show which page number it joins up to. Page 1 always starts at the top left hand side of the pattern. Our pages also have a shaded grey section. This indicates a 3 row overlap from adjoining pages to assist with reading the pattern. PLEASE DO NOT RESTITCH THIS AREA.

* You should begin at the centre of the pattern. To find the centre of the pattern it is just a matter of laying the pattern out and locating the arrows at the top and left hand side of the patterns, they are determined by dividing the stitch numbers wide and high in half. Where the two points meet in the middle, that is the centre.

* If you need more assistance to find the middle of your pattern or the page layout, please see the notes section on the colour symbol chart. The easiest way to stitch this pattern, as it has multiple pages, is to stitch one page at a time.

* We suggest using two strands of floss for each stitch and one strand for backstitching if the pattern calls for it.

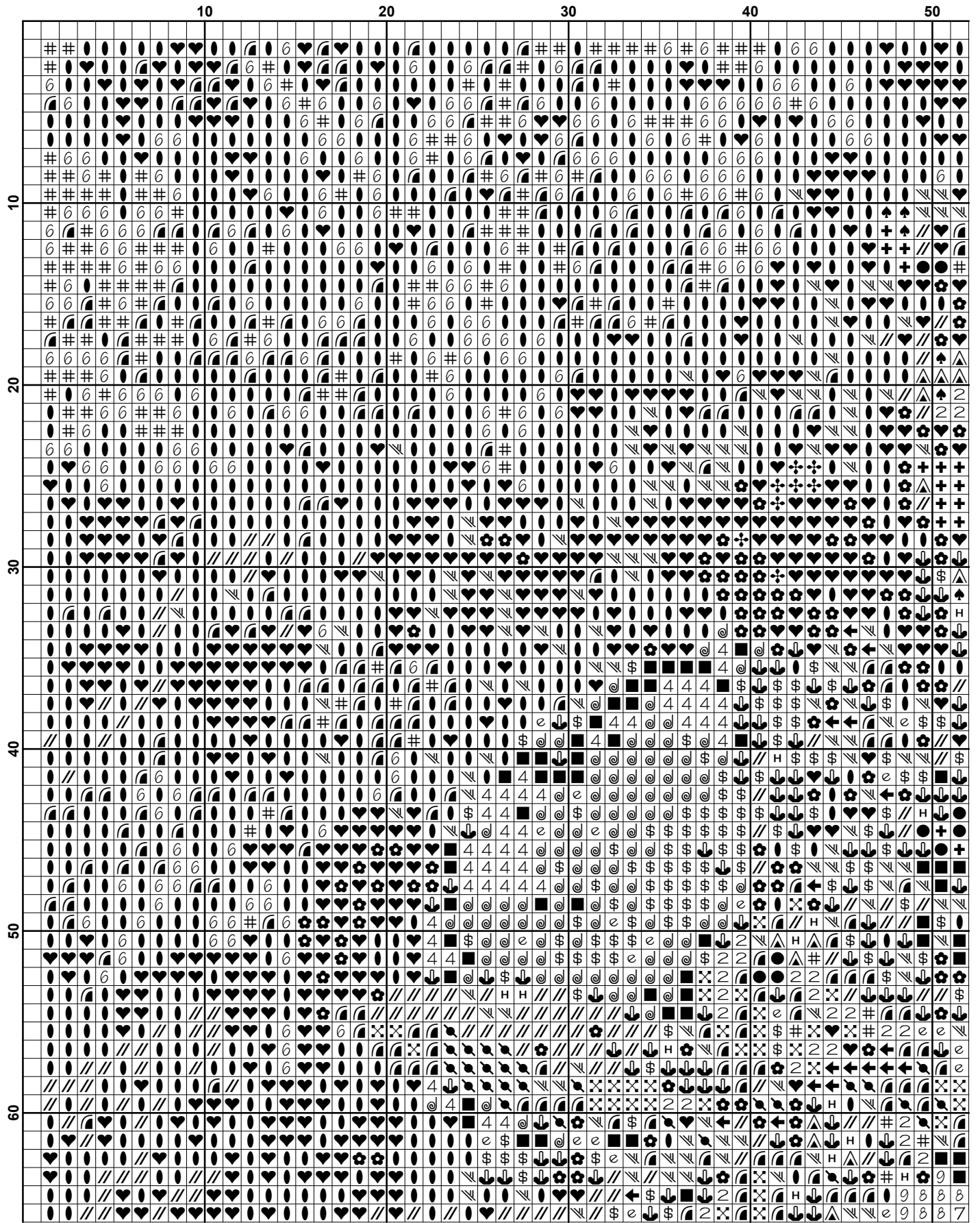
We hope you enjoy stitching our pattern.

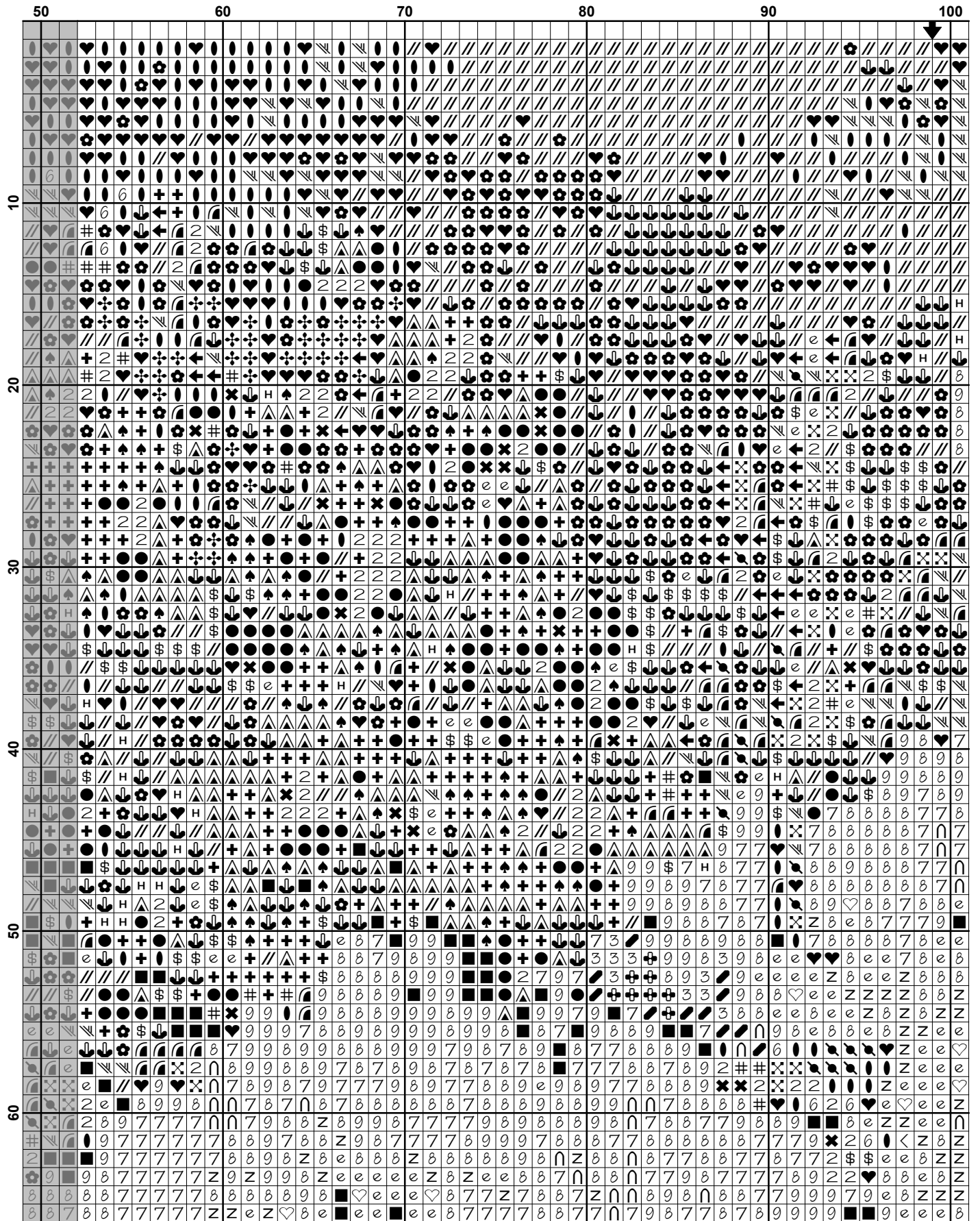
Thanks and Best Wishes
Tereena Clarke

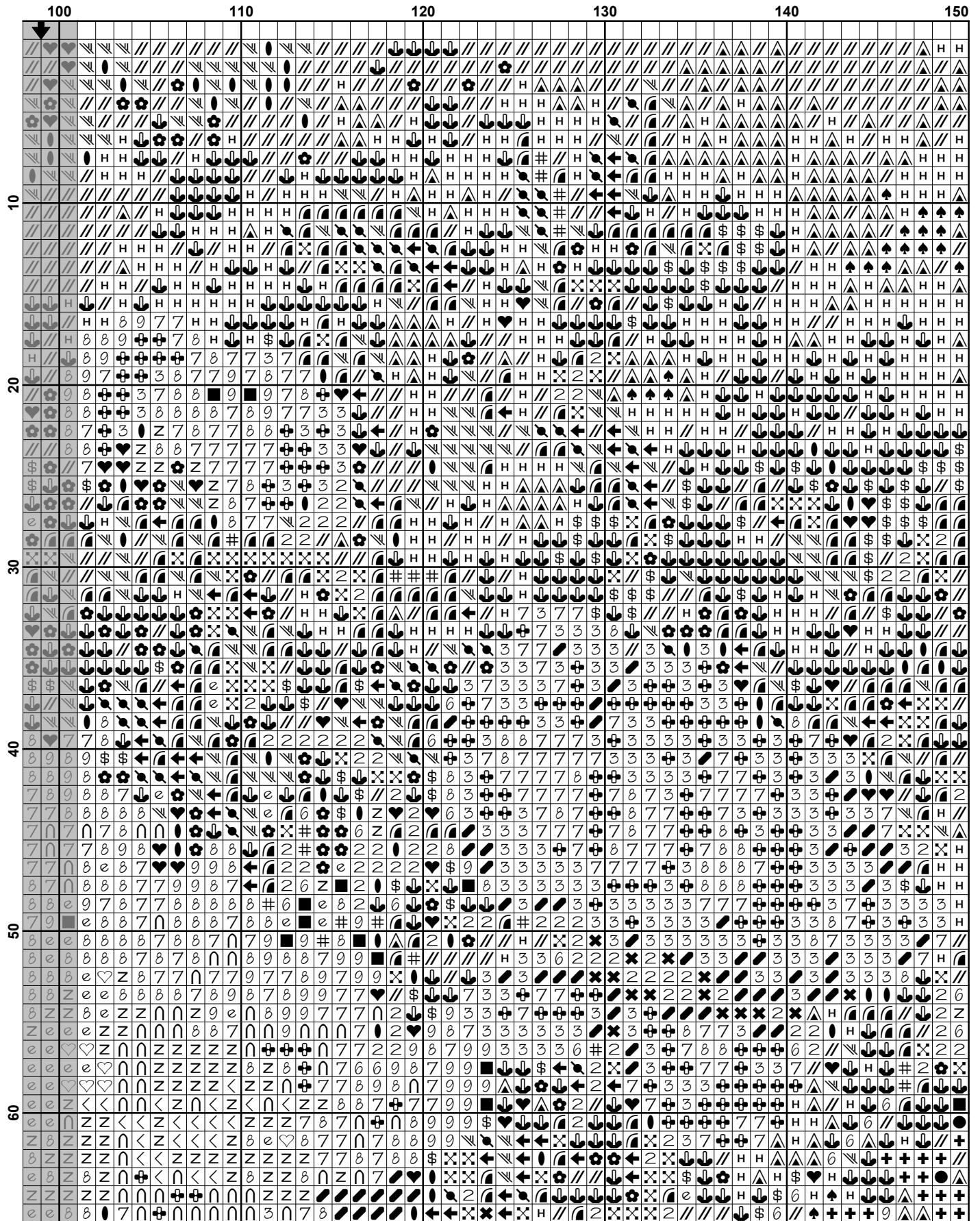
Artecy Cross Stitch
Po Box 3474
Tuggerah, NSW 2259
Australia

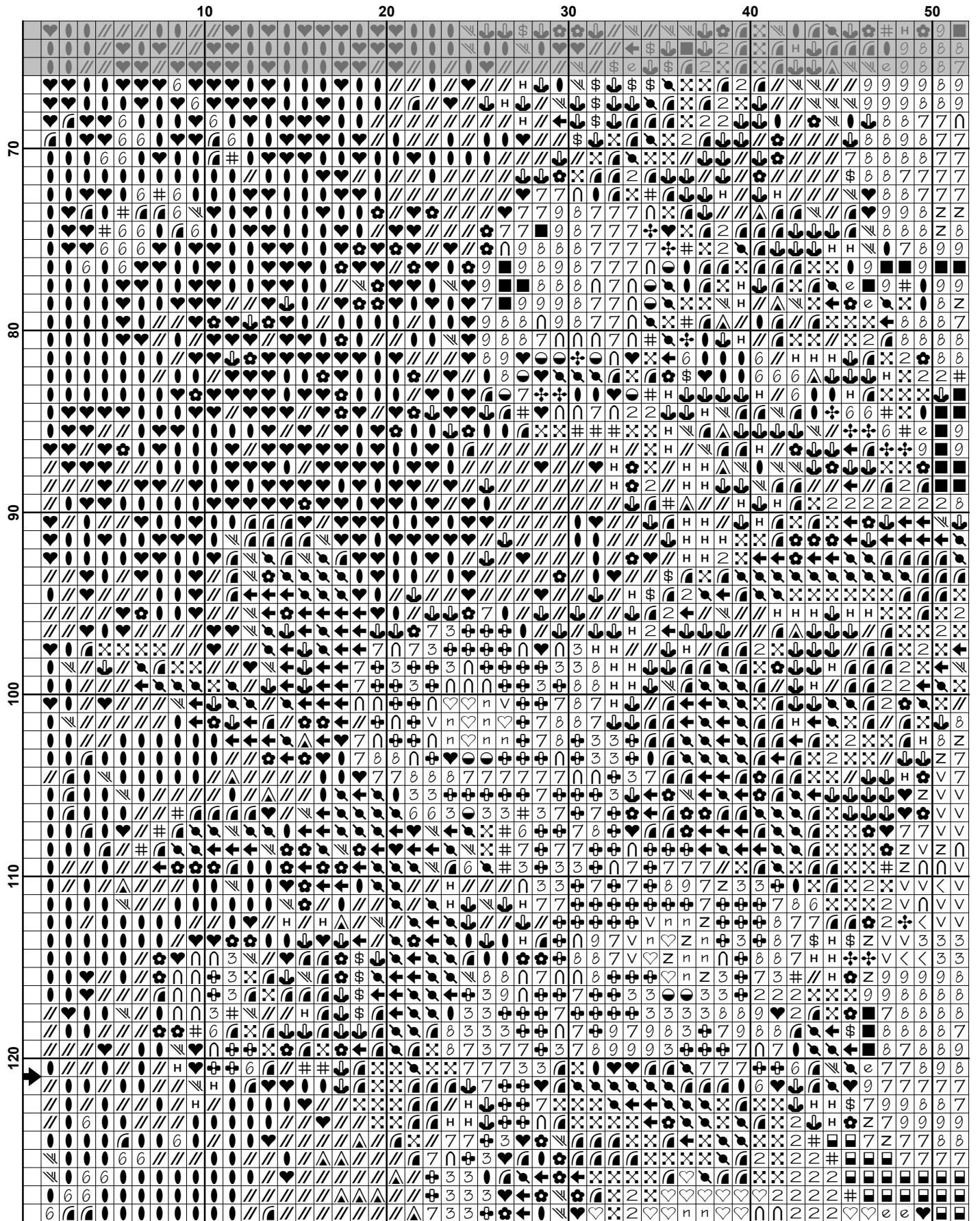
Websites: www.artecy.com and www.artecyshop.com
Email: artecy@artecy.com or stitch@artecyshop.com

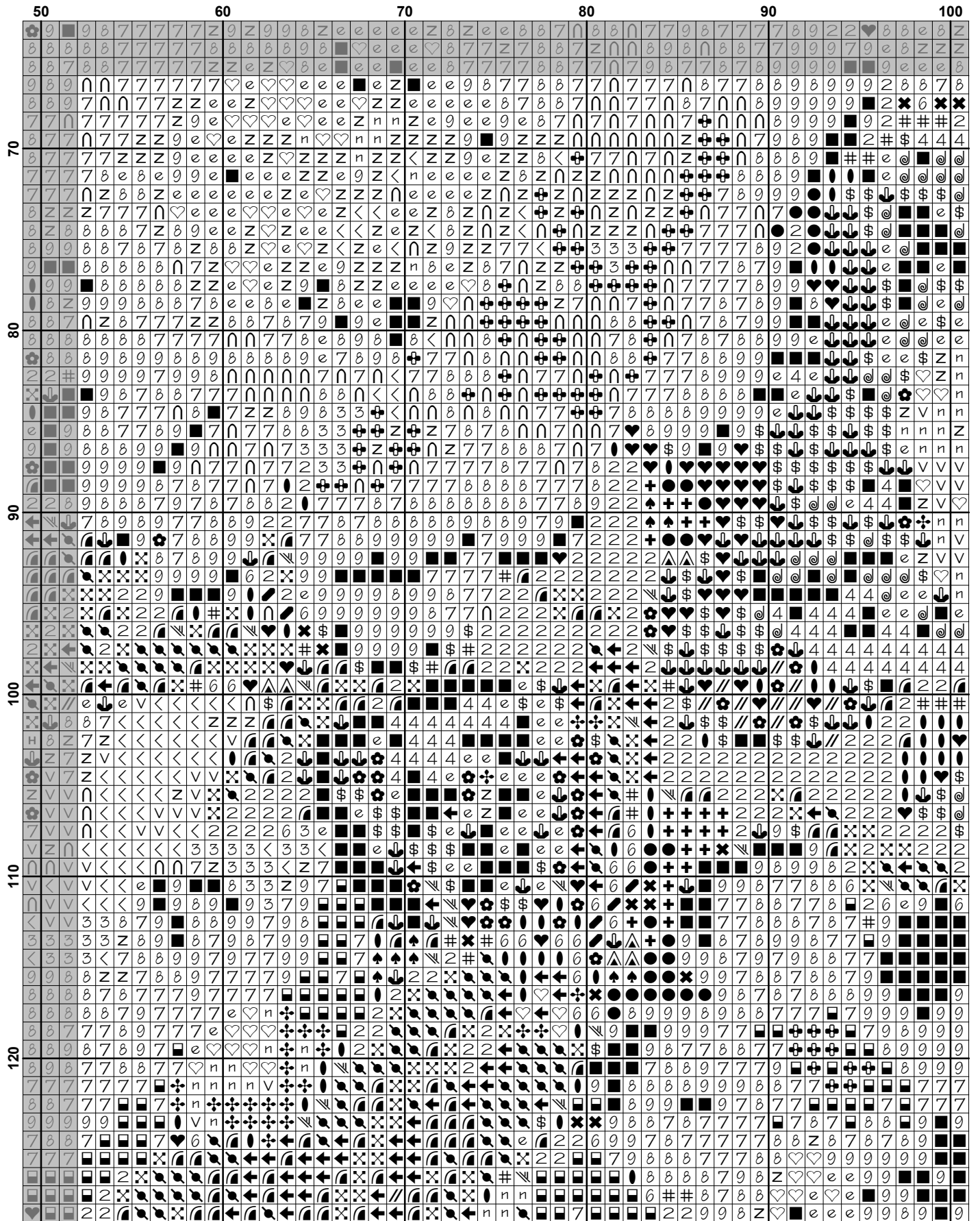
*Patterns are strictly for personal use only. It is against our copyright to make kits for sale from our designs or to sell, copy or redistribute this pattern in any form. You may not upload our patterns to any internet forums or groups or any other website. You may make 1 copy of this pattern for a working copy for your own personal use if needed.

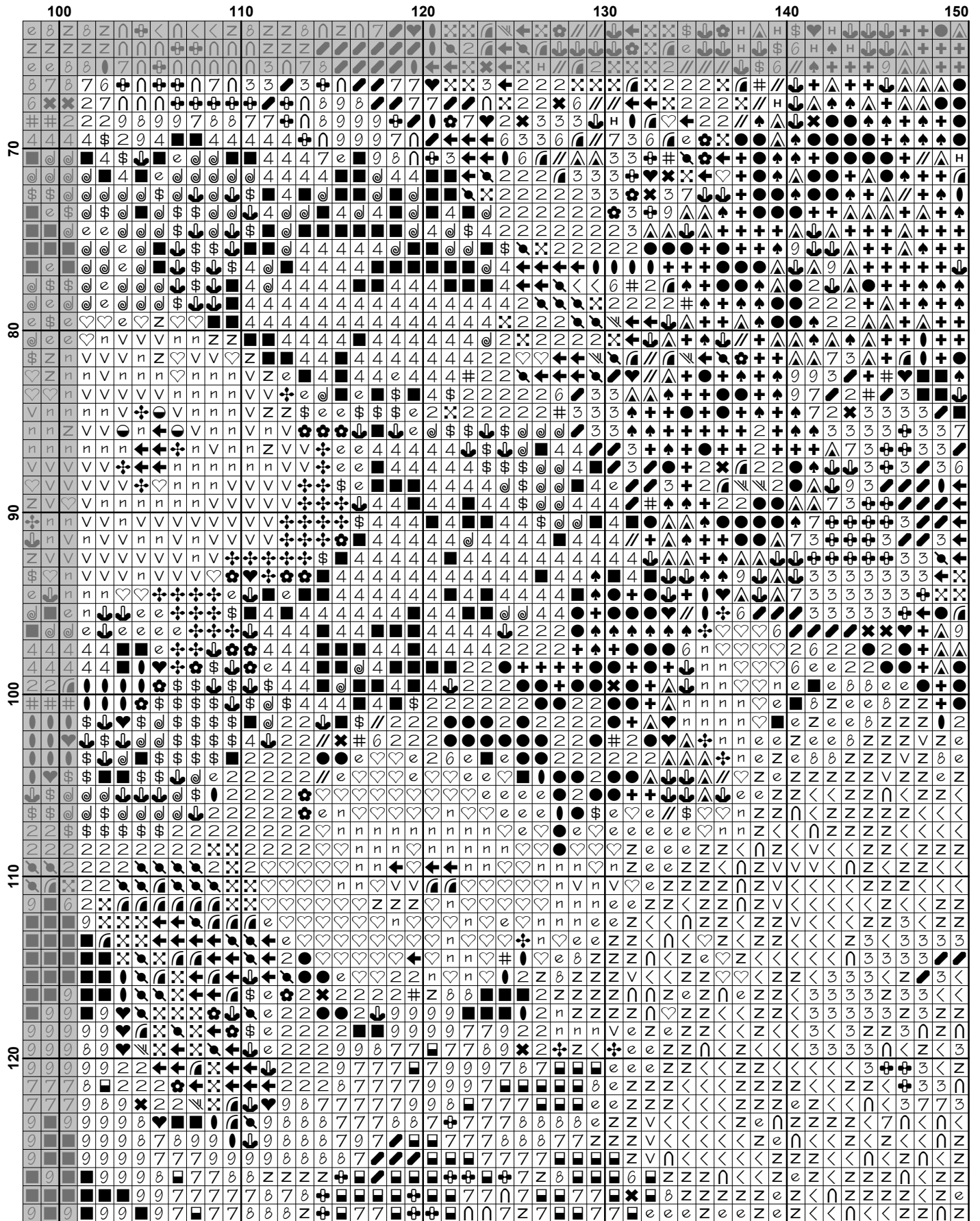


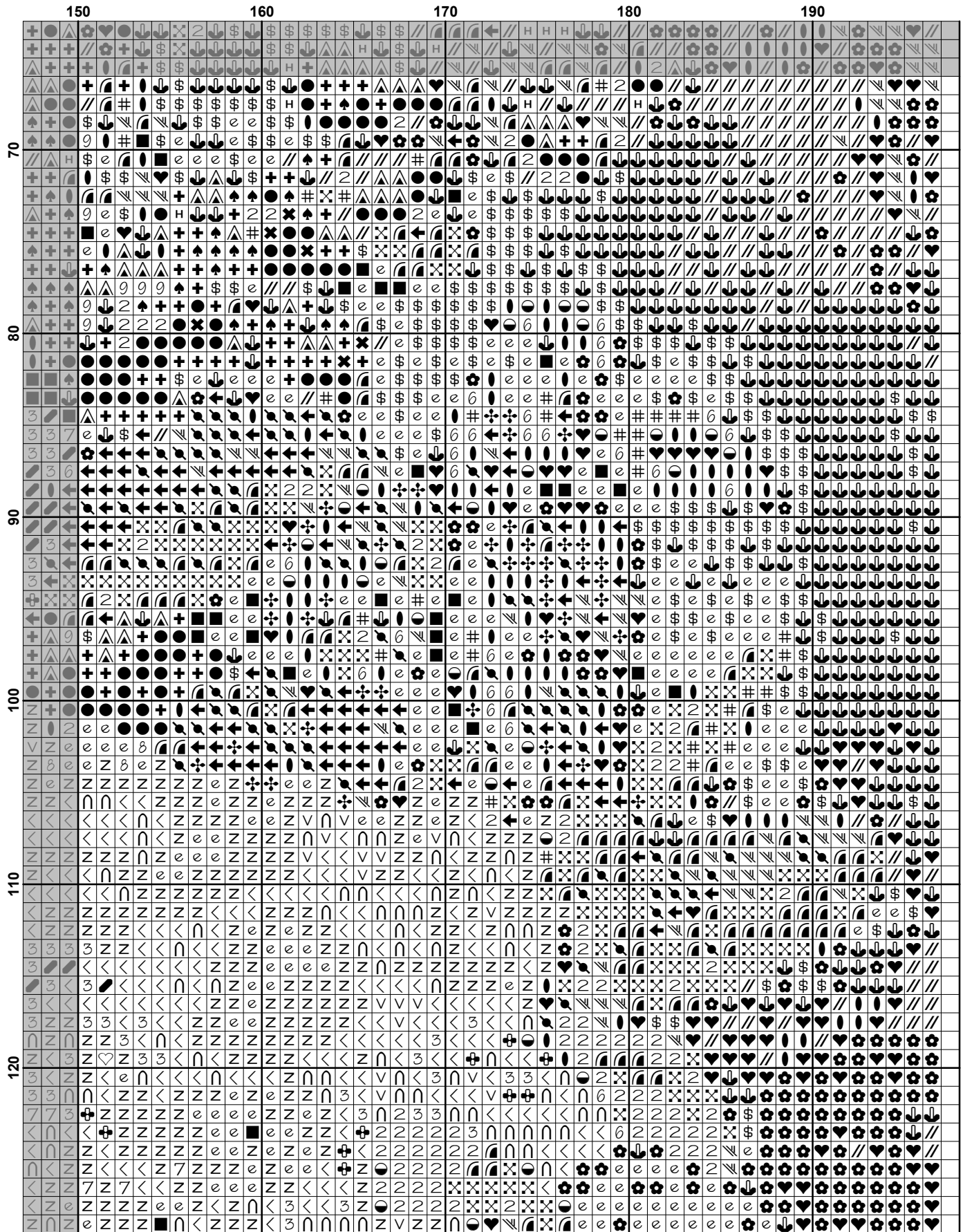


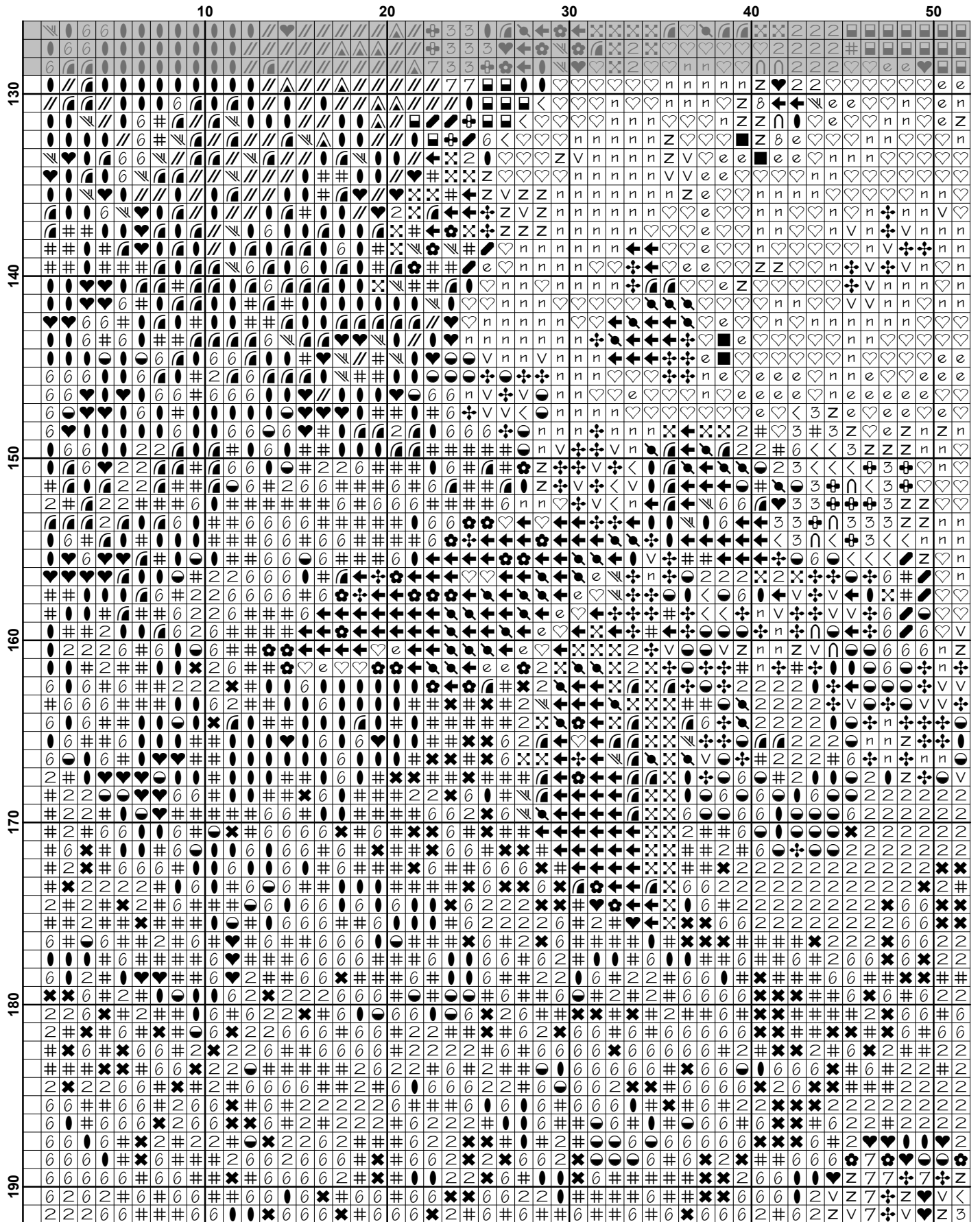


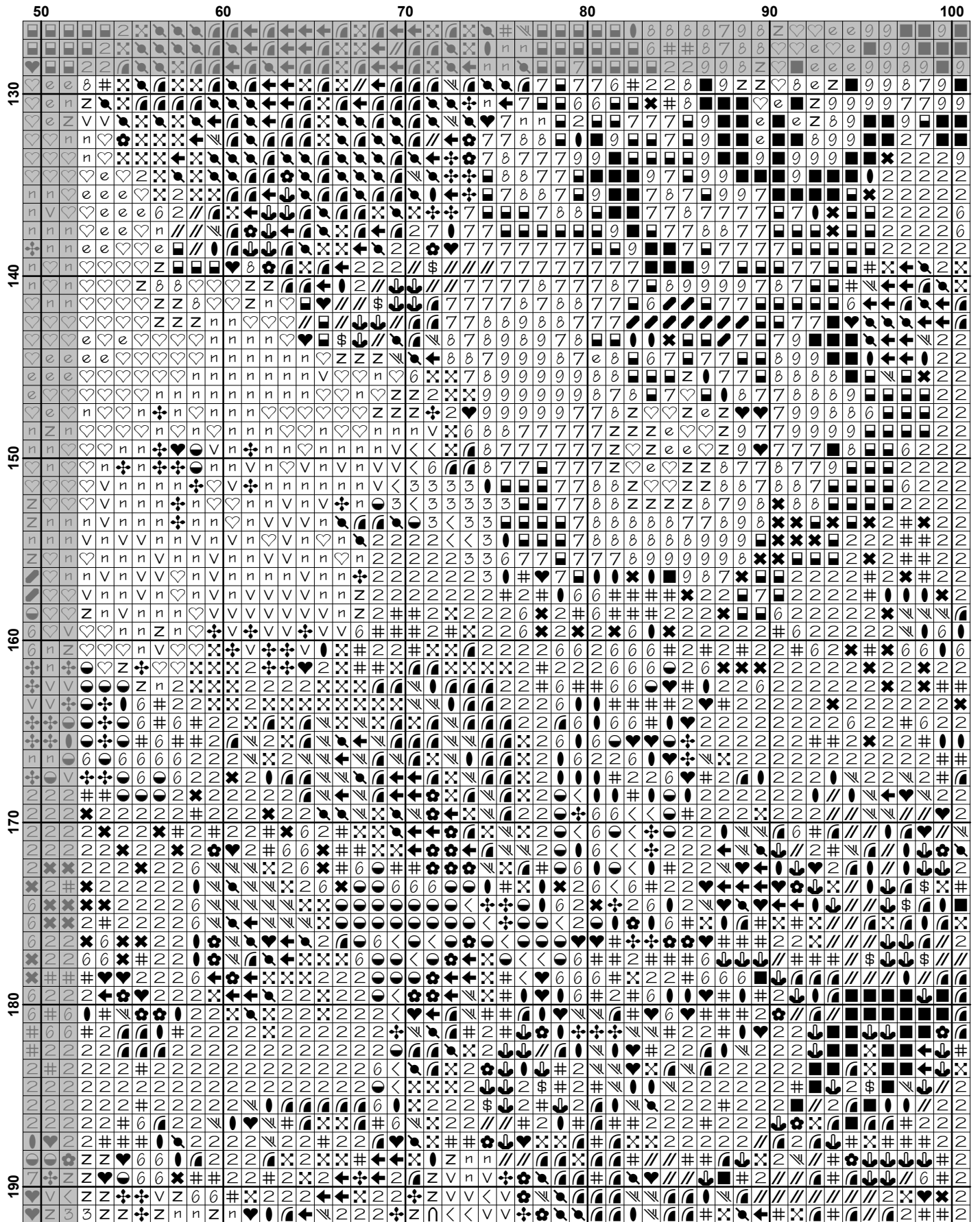


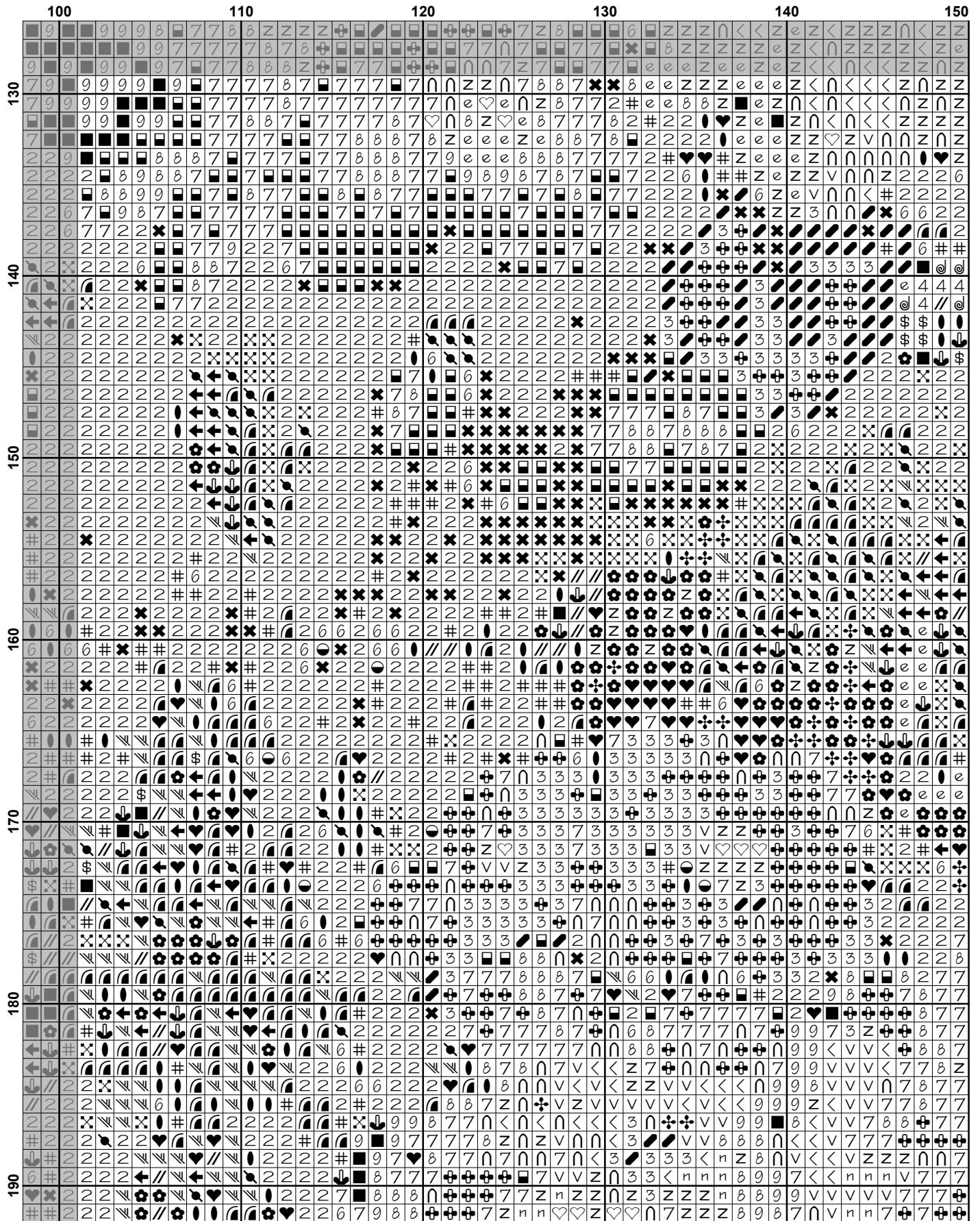


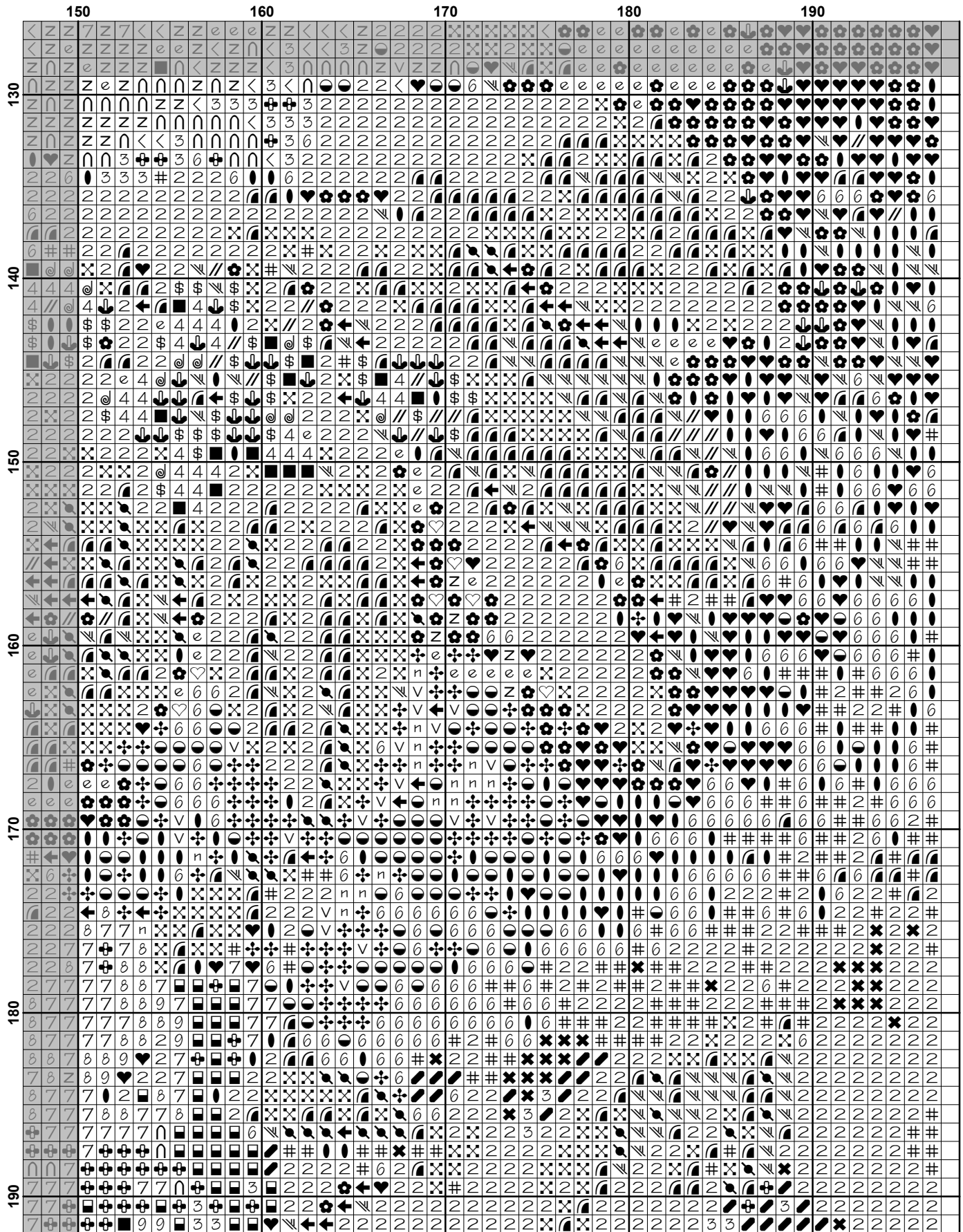


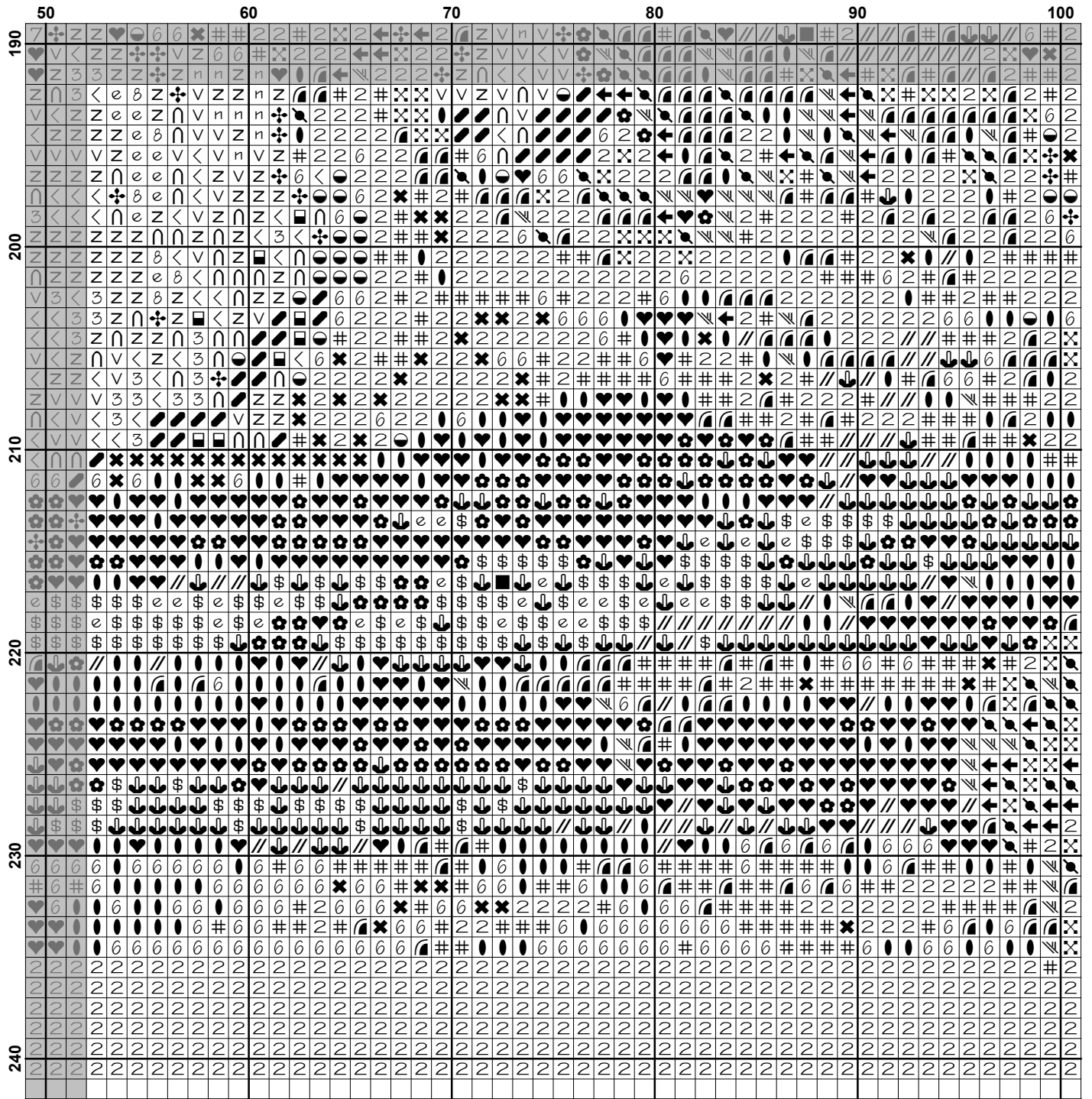


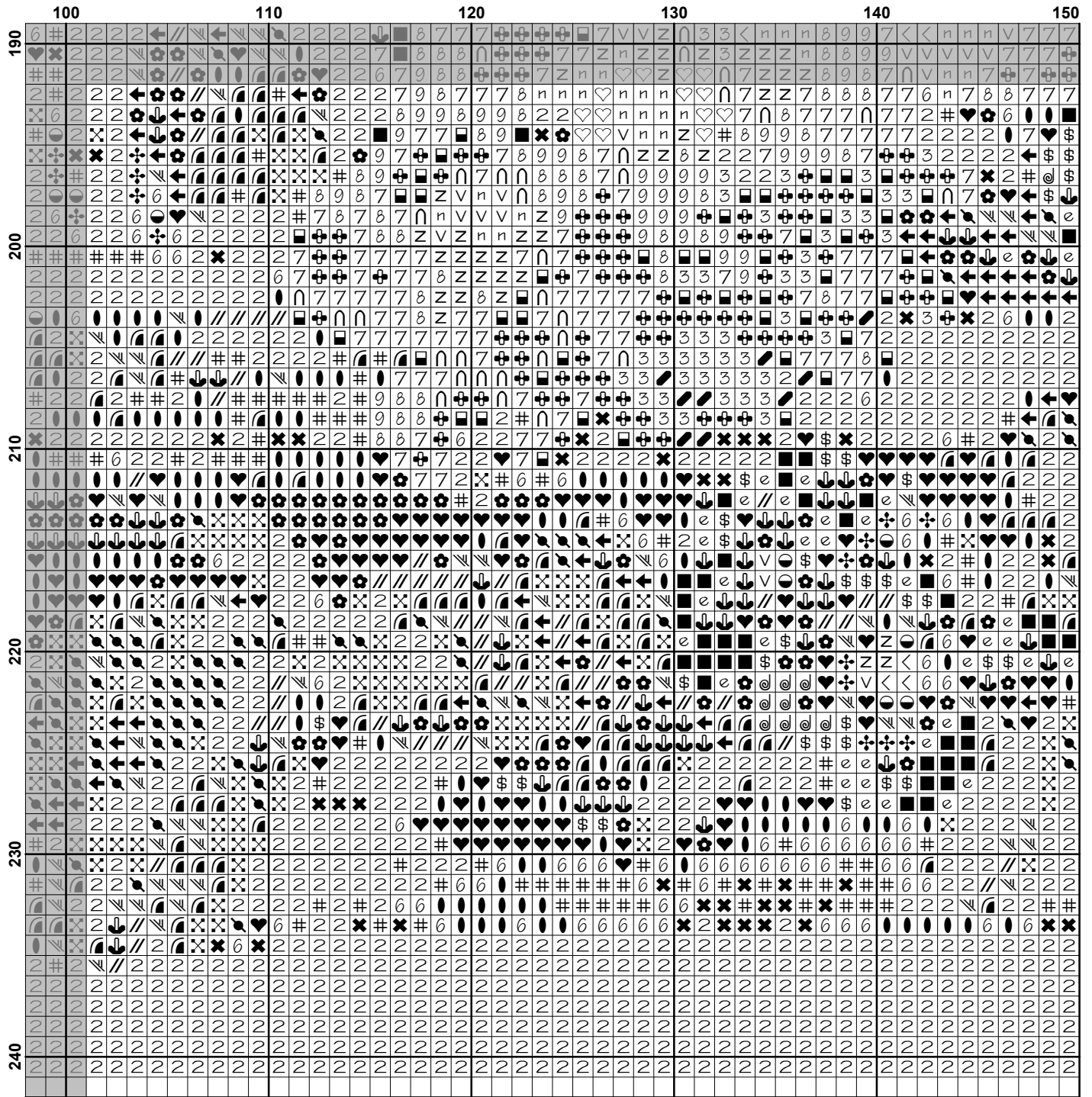


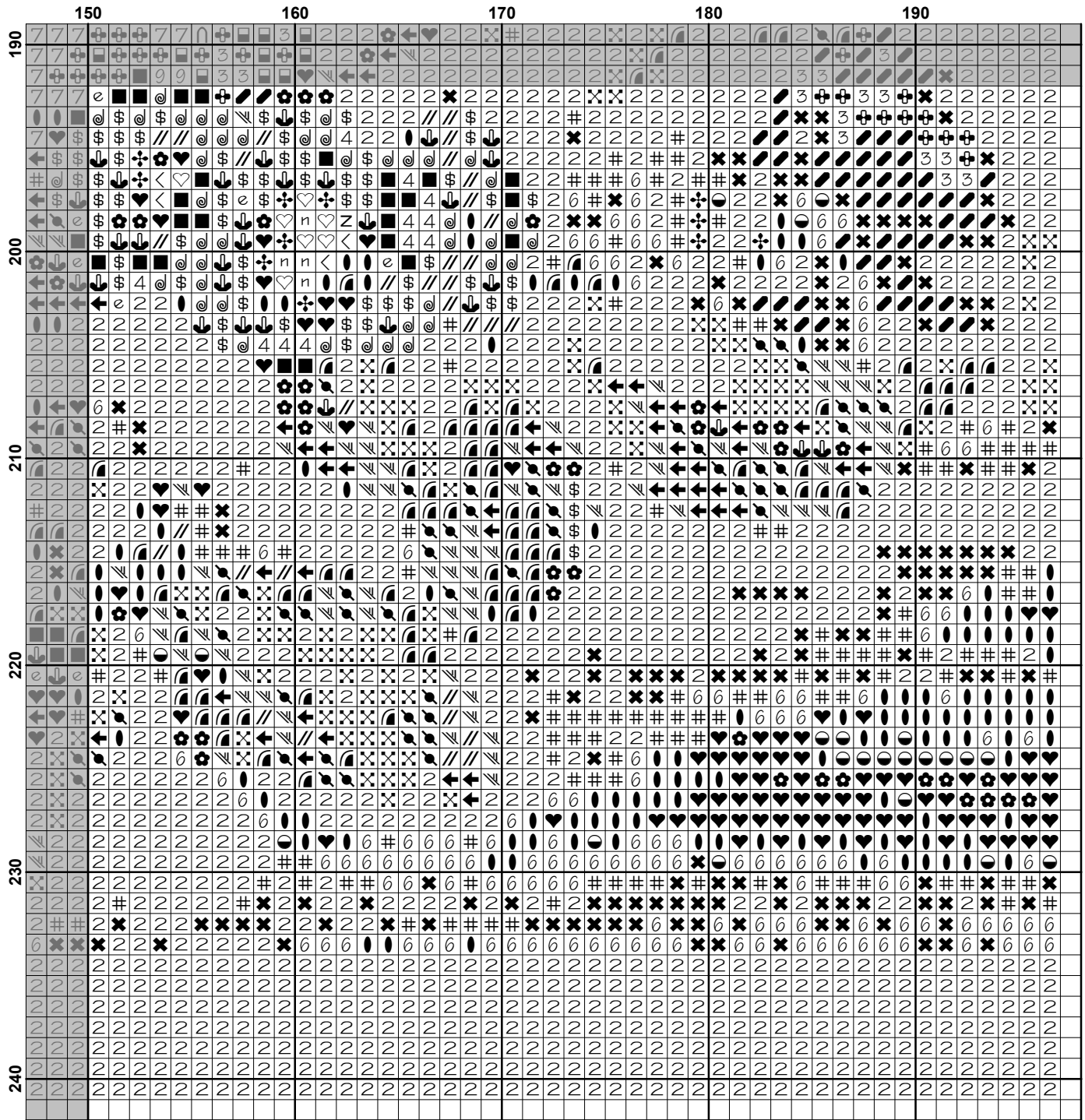








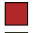


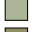

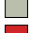
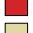








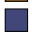
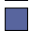



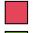

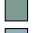

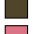





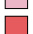


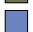
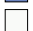








Pattern Name: Mini June Flowers in Radiance
Designed By: Painting by Albert Williams-Bridgeman
Company: Artecy Cross Stitch
Copyright: Copyright Artecy Cross Stitch. All rights Reserved.
Fabric: Aida 14, White
 196w X 240h Stitches
Size(s): 14 Count, 14w X 17-1/8h in
 16 Count, 12-1/4w X 15h in
 18 Count, 10-7/8w X 13-1/4h in

Floss Used for Full Stitches:

Symbol	Strands	Type	Number	Color
	2	DMC	160	Gray Blue-MD
	2	DMC	310	Black
	2	DMC	321	Christmas Red
	2	DMC	372	Mustard-LT
	2	DMC	520	Fern Green-DK
	2	DMC	524	Fern Green-VY LT
	2	DMC	640	Beige Gray-VY DK
	2	DMC	648	Beaver Gray-LT
	2	DMC	666	Christmas Red-BRT
	2	DMC	677	Old Gold-VY LT
	2	DMC	703	Chartreuse
	2	DMC	718	Plum
	2	DMC	720	Orange Spice-DK
	2	DMC	722	Orange Spice-LT
	2	DMC	741	Tangerine-MD
	2	DMC	742	Tangerine-LT
	2	DMC	743	Yellow-MD
	2	DMC	780	Topaz-UL VY DK
	2	DMC	791	Cornflower Blue-VY DK
	2	DMC	792	Cornflower Blue-DK
	2	DMC	801	Coffee Brown-DK
	2	DMC	832	Golden Olive
	2	DMC	890	Pistachio Green-UL DK
	2	DMC	891	Carnation-DK
	2	DMC	905	Parrot Green-DK
	2	DMC	926	Gray Green-MD
	2	DMC	932	Antique Blue-LT
	2	DMC	938	Coffee Brown-UL DK
	2	DMC	961	Dusty Rose-DK
	2	DMC	987	Forest Green-DK
	2	DMC	3072	Beaver Gray-VY LT
	2	DMC	3354	Dusty Rose-LT
	2	DMC	3371	Black Brown
	2	DMC	3689	Mauve-LT
	2	DMC	3705	Melon-DK
	2	DMC	3770	Tawny-VY LT
	2	DMC	3787	Brown Gray-DK
	2	DMC	3838	Lavender Blue-DK
	2	DMC	3865	Winter White

Notes:

The middle of this pattern can be found on page 6 and is 99 stitches across and 121 stitches down.

Pattern layout using page numbers in top left.

1 2 3 4
5 6 7 8
9 10 11 12
13 14 15 16

Usage Summary

Strands Per Skein: 6

Skein Length: 313.0 in

Type	Number	Full	Half	Quarter	Petite	Back(in)	Str(in)	Spec(in)	French	Bead	Skein Est.
DMC 160	160	636	0	0	0	0.0	0.0	0.0	0	0	1.000
DMC 310	310	5862	0	0	0	0.0	0.0	0.0	0	0	3.000
DMC 321	321	342	0	0	0	0.0	0.0	0.0	0	0	1.000
DMC 372	372	1682	0	0	0	0.0	0.0	0.0	0	0	1.000
DMC 520	520	2364	0	0	0	0.0	0.0	0.0	0	0	2.000
DMC 524	524	2386	0	0	0	0.0	0.0	0.0	0	0	2.000
DMC 640	640	2459	0	0	0	0.0	0.0	0.0	0	0	2.000
DMC 648	648	1041	0	0	0	0.0	0.0	0.0	0	0	1.000
DMC 666	666	721	0	0	0	0.0	0.0	0.0	0	0	1.000
DMC 677	677	984	0	0	0	0.0	0.0	0.0	0	0	1.000
DMC 703	703	896	0	0	0	0.0	0.0	0.0	0	0	1.000
DMC 718	718	591	0	0	0	0.0	0.0	0.0	0	0	1.000
DMC 720	720	599	0	0	0	0.0	0.0	0.0	0	0	1.000
DMC 722	722	1057	0	0	0	0.0	0.0	0.0	0	0	1.000
DMC 741	741	410	0	0	0	0.0	0.0	0.0	0	0	1.000
DMC 742	742	571	0	0	0	0.0	0.0	0.0	0	0	1.000
DMC 743	743	620	0	0	0	0.0	0.0	0.0	0	0	1.000
DMC 780	780	436	0	0	0	0.0	0.0	0.0	0	0	1.000
DMC 791	791	370	0	0	0	0.0	0.0	0.0	0	0	1.000
DMC 792	792	442	0	0	0	0.0	0.0	0.0	0	0	1.000
DMC 801	801	1809	0	0	0	0.0	0.0	0.0	0	0	1.000
DMC 832	832	518	0	0	0	0.0	0.0	0.0	0	0	1.000
DMC 890	890	1436	0	0	0	0.0	0.0	0.0	0	0	1.000
DMC 891	891	794	0	0	0	0.0	0.0	0.0	0	0	1.000
DMC 905	905	884	0	0	0	0.0	0.0	0.0	0	0	1.000
DMC 926	926	2840	0	0	0	0.0	0.0	0.0	0	0	2.000
DMC 932	932	947	0	0	0	0.0	0.0	0.0	0	0	1.000
DMC 938	938	1861	0	0	0	0.0	0.0	0.0	0	0	1.000
DMC 961	961	1443	0	0	0	0.0	0.0	0.0	0	0	1.000
DMC 987	987	1315	0	0	0	0.0	0.0	0.0	0	0	1.000
DMC 3072	3072	313	0	0	0	0.0	0.0	0.0	0	0	1.000
DMC 3354	3354	1139	0	0	0	0.0	0.0	0.0	0	0	1.000
DMC 3371	3371	952	0	0	0	0.0	0.0	0.0	0	0	1.000
DMC 3689	3689	779	0	0	0	0.0	0.0	0.0	0	0	1.000
DMC 3705	3705	608	0	0	0	0.0	0.0	0.0	0	0	1.000
DMC 3770	3770	762	0	0	0	0.0	0.0	0.0	0	0	1.000
DMC 3787	3787	3584	0	0	0	0.0	0.0	0.0	0	0	2.000
DMC 3838	3838	216	0	0	0	0.0	0.0	0.0	0	0	1.000
DMC 3865	3865	371	0	0	0	0.0	0.0	0.0	0	0	1.000