

Mini Purr



* Original image courtesy of C Fedak. Cross Stitch Design by Tereena Clarke.

Completed Size = 100w x 84h Stitches

14 Count, 7.5w x 6h inches (19cm x 15cm)

16 Count, 6.5w x 5.5h inches (17cm x 14cm)

18 Count, 5.5w x 5h inches (14cm x 13cm)

Uses 47 DMC cotton colours. Only full cross stitches are used in this pattern.

Pattern Instructions

* This pattern can be worked on any fabric type, colour or count you prefer. To work out the size of the finished article, take the number of stitches wide and high and divide it by the count of your fabric (e.g. 14,16,18 count aida etc) to get the size in inches. Times it by 2.54 to get centimetres. We have the sizes in inches shown on the previous page. Also leave at least a few inches of fabric around each side of the design to assist in framing. The higher the fabric count the smaller the completed project will be.

* To put the pattern together look in the top and bottom corners. The page numbers in brackets show which page number it joins up to. Page 1 always starts at the top left hand side of the pattern. Our pages also have a shaded grey section. This indicates a 3 row overlap from adjoining pages to assist with reading the pattern. PLEASE DO NOT RESTITCH THIS AREA.

* You should begin at the centre of the pattern. To find the centre of the pattern it is just a matter of laying the pattern out and locating the arrows at the top and left hand side of the patterns, they are determined by dividing the stitch numbers wide and high in half. Where the two points meet in the middle, that is the centre.

* If you need more assistance to find the middle of your pattern or the page layout, please see the notes section on the colour symbol chart. The easiest way to stitch this pattern, as it has multiple pages, is to stitch one page at a time.

* We suggest using two strands of floss for each stitch and one strand for backstitching if the pattern calls for it.

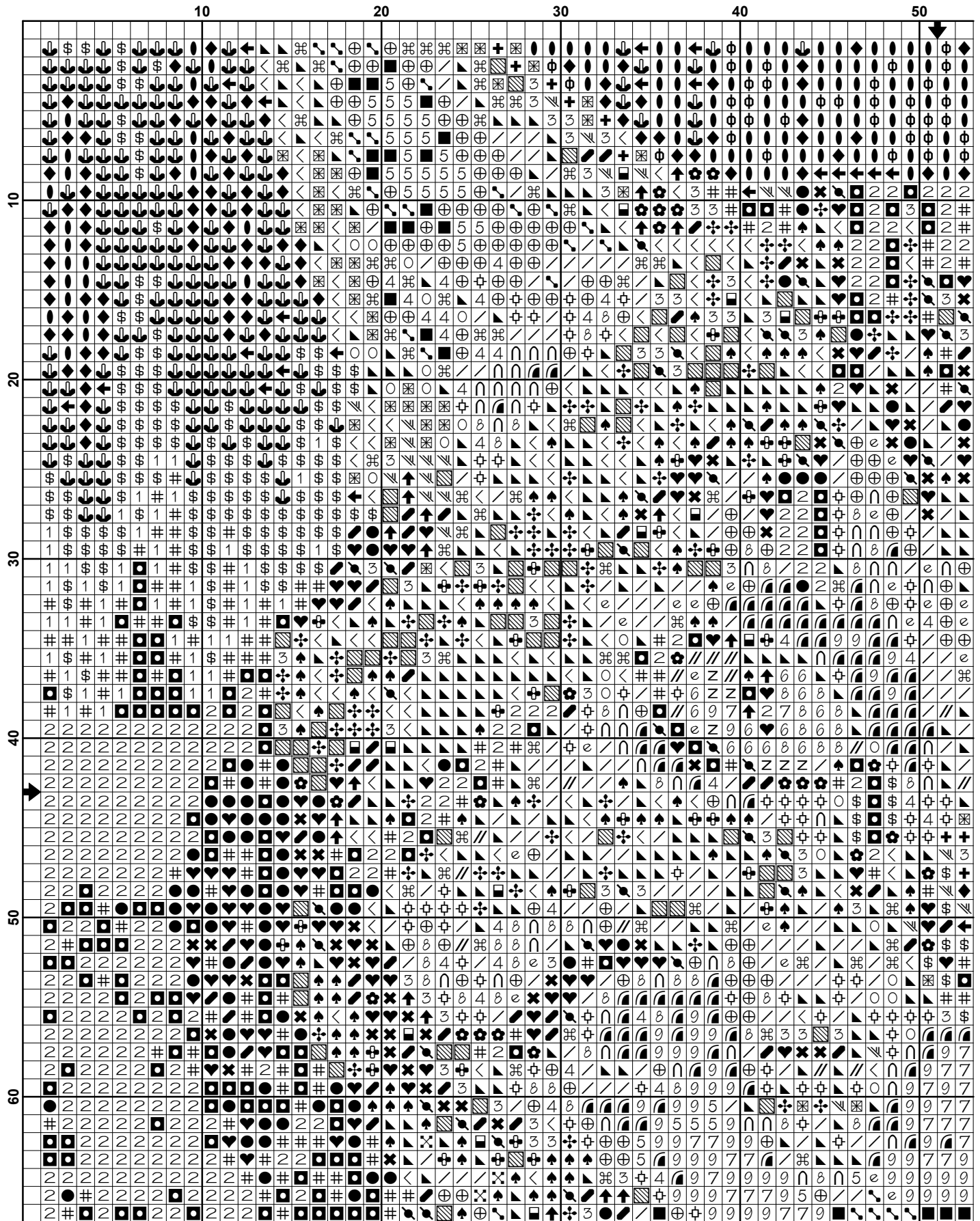
We hope you enjoy stitching our pattern.

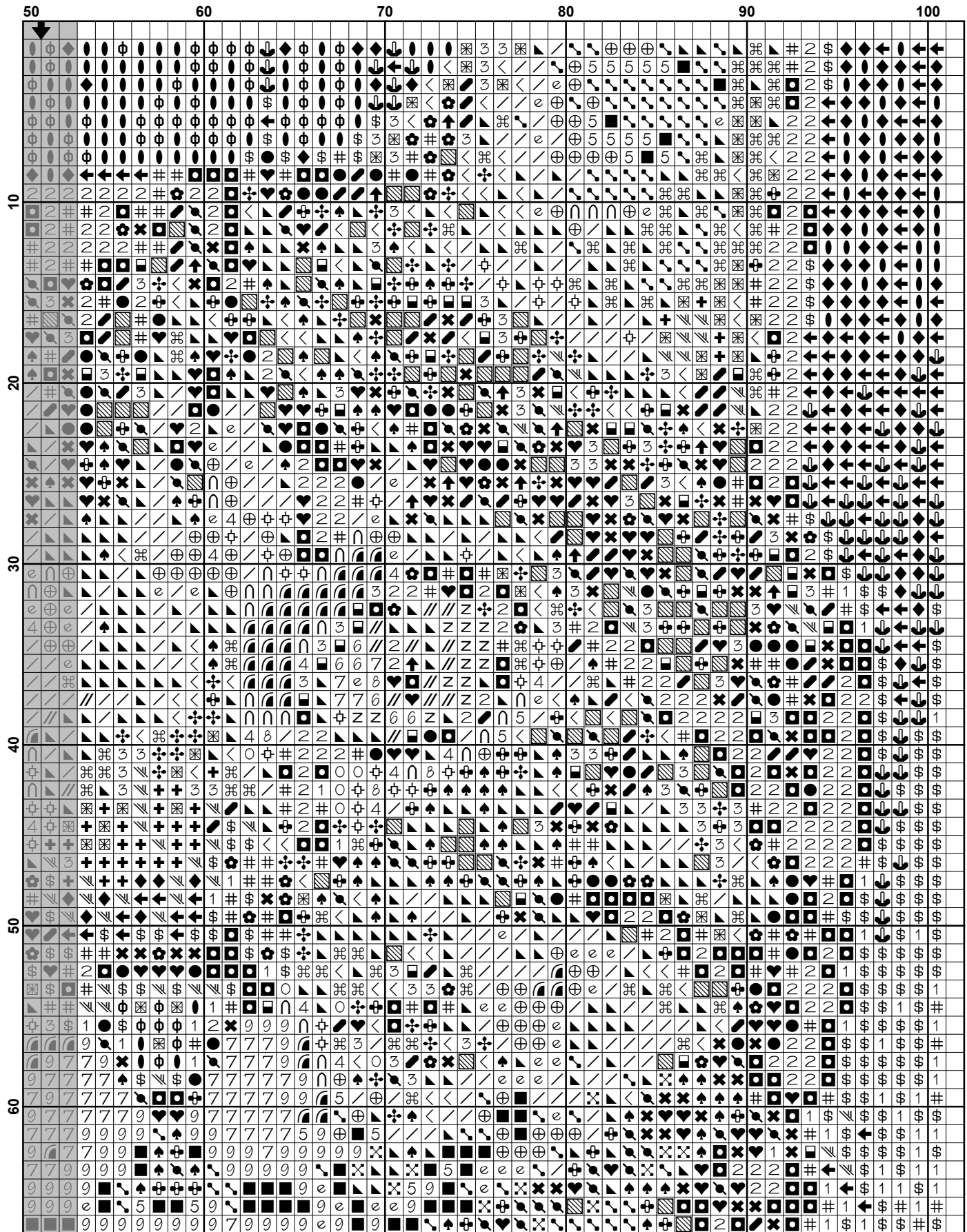
Thanks and Best Wishes
Tereena Clarke

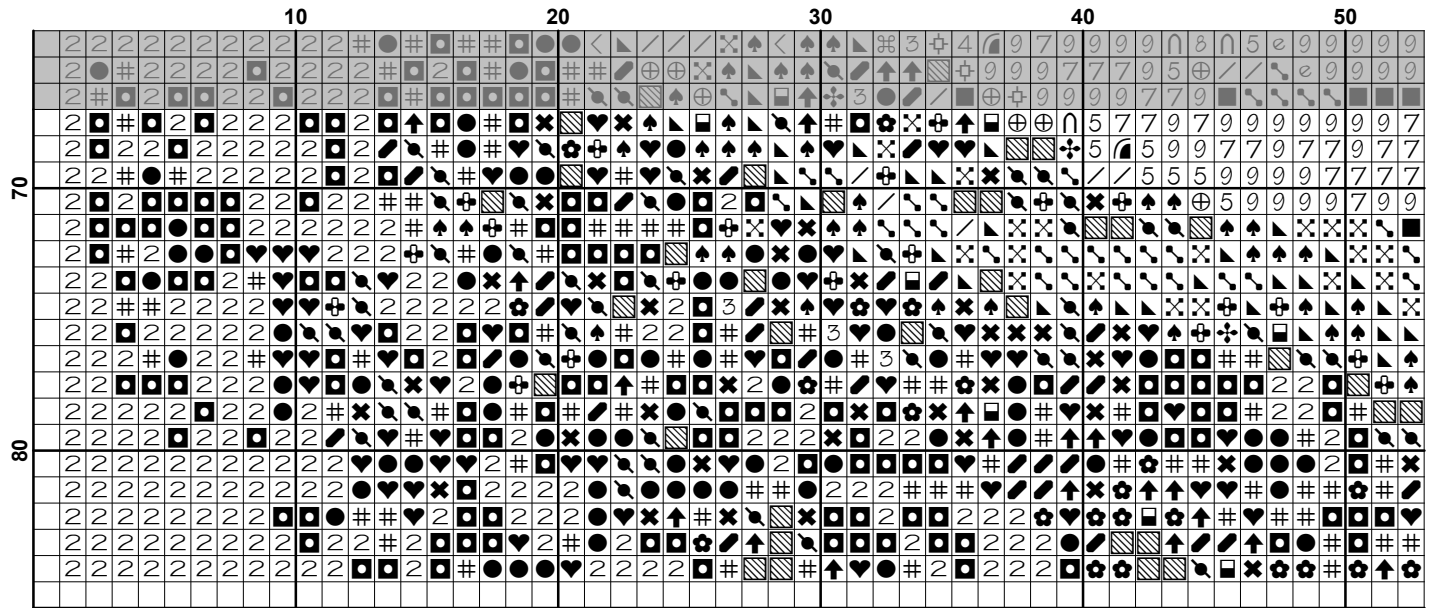
Artecy Cross Stitch
Po Box 3474
Tuggerah, NSW 2259
Australia

Websites: www.artecy.com and www.artecyshop.com
Email: artecy@artecy.com or stitch@artecyshop.com

*Patterns are strictly for personal use only. It is against our copyright to make kits for sale from our designs or to sell, copy or redistribute this pattern in any form. You may not upload our patterns to any internet forums or groups or any other website. You may make 1 copy of this pattern for a working copy for your own personal use if needed.







Pattern Name: Mini Purr
Designed By: Photo by C Fedak
Company: Artecy Cross Stitch
Copyright: Copyright Artecy Cross Stitch. All rights Reserved.
Fabric: Aida 14, White
 100w X 84h Stitches
Size(s): 14 Count, 7-1/8w X 6h in
 16 Count, 6-1/4w X 5-1/4h in
 18 Count, 5-1/2w X 4-5/8h in

Floss Used for Full Stitches:

Symbol	Strands	Type	Number	Color
	2	DMC	300	Mahogany-VY DK
	2	DMC	301	Mahogany-MD
	2	DMC	310	Black
	2	DMC	372	Mustard-LT
	2	DMC	400	Mahogany-DK
	2	DMC	407	Desert Sand-DK
	2	DMC	420	Hazelnut Brown-DK
	2	DMC	453	Shell Gray-LT
	2	DMC	472	Avocado Green-UL LT
	2	DMC	543	Beige Brown-UL VY LT
	2	DMC	610	Drab Brown-DK
	2	DMC	613	Drab Brown-VY LT
	2	DMC	632	Desert Sand-UL VY DK
	2	DMC	640	Beige Gray-VY DK
	2	DMC	647	Beaver Gray-MD
	2	DMC	677	Old Gold-VY LT
	2	DMC	738	Tan-VY LT
	2	DMC	754	Peach-LT
	2	DMC	779	Cocoa-DK
	2	DMC	780	Topaz-UL VY DK
	2	DMC	838	Beige Brown-VY DK
	2	DMC	839	Beige Brown-DK
	2	DMC	840	Beige Brown-MD
	2	DMC	841	Beige Brown-LT
	2	DMC	842	Beige Brown-VY LT
	2	DMC	898	Coffee Brown-VY DK
	2	DMC	938	Coffee Brown-UL DK
	2	DMC	951	Tawny-LT
	2	DMC	975	Golden Brown-DK
	2	DMC	3021	Brown Gray-VY DK
	2	DMC	3023	Brown Gray-LT
	2	DMC	3031	Mocha Brown-VY DK
	2	DMC	3064	Desert Sand
	2	DMC	3348	Yellow Green-LT
	2	DMC	3371	Black Brown
	2	DMC	3770	Tawny-VY LT
	2	DMC	3772	Desert Sand-VY DK
	2	DMC	3779	Terra Cotta-UL VY LT
	2	DMC	3781	Mocha Brown-DK
	2	DMC	3787	Brown Gray-DK
	2	DMC	3790	Beige Gray-UL DK
	2	DMC	3826	Golden Brown
	2	DMC	3860	Cocoa
	2	DMC	3862	Mocha Beige-DK
	2	DMC	3863	Mocha Beige-MD
	2	DMC	3864	Mocha Beige-LT

Symbol	Strands	Type	Number	Color
□	7	2	DMC 3865	Winter White

Notes:

The middle of this pattern can be found on page 1 and is 51 stitches across and 43 stitches down.

Pattern layout using page numbers in top left.

1 2

3 4

Usage Summary

Strands Per Skein: 6

Skein Length: 313.0 in

Type	Number	Full	Half	Quarter	Petite	Back(in)	Str(in)	Spec(in)	French	Bead	Skein Est.
DMC 300	300	373	0	0	0	0.0	0.0	0.0	0	0	1.000
DMC 301	301	203	0	0	0	0.0	0.0	0.0	0	0	1.000
DMC 310	310	682	0	0	0	0.0	0.0	0.0	0	0	1.000
DMC 372	372	29	0	0	0	0.0	0.0	0.0	0	0	1.000
DMC 400	400	274	0	0	0	0.0	0.0	0.0	0	0	1.000
DMC 407	407	149	0	0	0	0.0	0.0	0.0	0	0	1.000
DMC 420	420	36	0	0	0	0.0	0.0	0.0	0	0	1.000
DMC 453	453	69	0	0	0	0.0	0.0	0.0	0	0	1.000
DMC 472	472	19	0	0	0	0.0	0.0	0.0	0	0	1.000
DMC 543	543	61	0	0	0	0.0	0.0	0.0	0	0	1.000
DMC 610	610	59	0	0	0	0.0	0.0	0.0	0	0	1.000
DMC 613	613	85	0	0	0	0.0	0.0	0.0	0	0	1.000
DMC 632	632	66	0	0	0	0.0	0.0	0.0	0	0	1.000
DMC 640	640	284	0	0	0	0.0	0.0	0.0	0	0	1.000
DMC 647	647	75	0	0	0	0.0	0.0	0.0	0	0	1.000
DMC 677	677	54	0	0	0	0.0	0.0	0.0	0	0	1.000
DMC 738	738	118	0	0	0	0.0	0.0	0.0	0	0	1.000
DMC 754	754	82	0	0	0	0.0	0.0	0.0	0	0	1.000
DMC 779	779	190	0	0	0	0.0	0.0	0.0	0	0	1.000
DMC 780	780	186	0	0	0	0.0	0.0	0.0	0	0	1.000
DMC 838	838	186	0	0	0	0.0	0.0	0.0	0	0	1.000
DMC 839	839	154	0	0	0	0.0	0.0	0.0	0	0	1.000
DMC 840	840	155	0	0	0	0.0	0.0	0.0	0	0	1.000
DMC 841	841	730	0	0	0	0.0	0.0	0.0	0	0	1.000
DMC 842	842	206	0	0	0	0.0	0.0	0.0	0	0	1.000
DMC 898	898	96	0	0	0	0.0	0.0	0.0	0	0	1.000
DMC 938	938	405	0	0	0	0.0	0.0	0.0	0	0	1.000
DMC 951	951	131	0	0	0	0.0	0.0	0.0	0	0	1.000
DMC 975	975	121	0	0	0	0.0	0.0	0.0	0	0	1.000
DMC 3021	3021	273	0	0	0	0.0	0.0	0.0	0	0	1.000
DMC 3023	3023	239	0	0	0	0.0	0.0	0.0	0	0	1.000
DMC 3031	3031	206	0	0	0	0.0	0.0	0.0	0	0	1.000
DMC 3064	3064	33	0	0	0	0.0	0.0	0.0	0	0	1.000
DMC 3348	3348	21	0	0	0	0.0	0.0	0.0	0	0	1.000
DMC 3371	3371	495	0	0	0	0.0	0.0	0.0	0	0	1.000
DMC 3770	3770	167	0	0	0	0.0	0.0	0.0	0	0	1.000
DMC 3772	3772	89	0	0	0	0.0	0.0	0.0	0	0	1.000
DMC 3779	3779	41	0	0	0	0.0	0.0	0.0	0	0	1.000
DMC 3781	3781	53	0	0	0	0.0	0.0	0.0	0	0	1.000
DMC 3787	3787	189	0	0	0	0.0	0.0	0.0	0	0	1.000
DMC 3790	3790	232	0	0	0	0.0	0.0	0.0	0	0	1.000
DMC 3826	3826	81	0	0	0	0.0	0.0	0.0	0	0	1.000
DMC 3860	3860	157	0	0	0	0.0	0.0	0.0	0	0	1.000
DMC 3862	3862	127	0	0	0	0.0	0.0	0.0	0	0	1.000
DMC 3863	3863	237	0	0	0	0.0	0.0	0.0	0	0	1.000
DMC 3864	3864	367	0	0	0	0.0	0.0	0.0	0	0	1.000
DMC 3865	3865	115	0	0	0	0.0	0.0	0.0	0	0	1.000