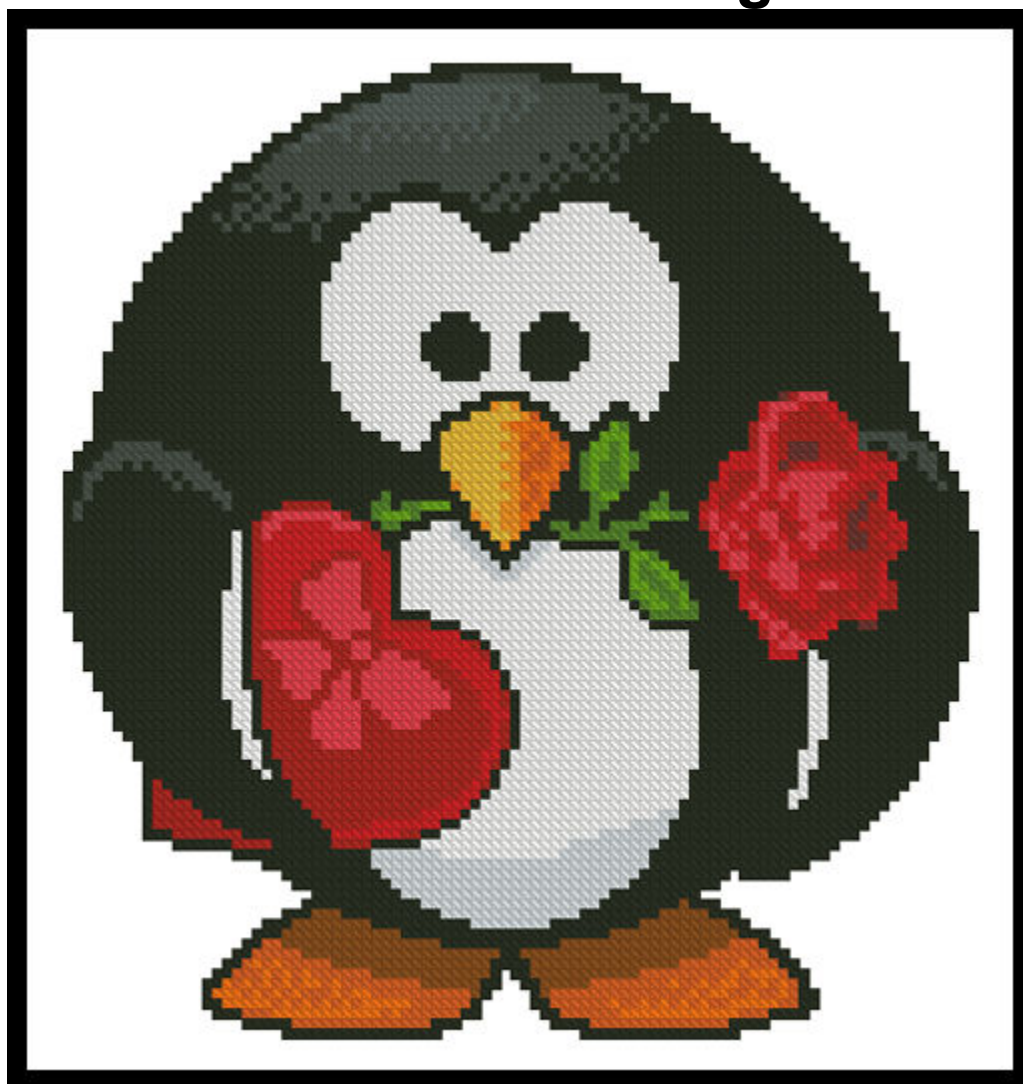


Mini Valentine Penguin



* Original image copyright of Moini - Pixabay.
Cross Stitch Design by Tereena Clarke.

Completed Size = 92w X 98h Stitches

14 Count, 6.5w X 7h inches

16 Count, 6w X 6.5h inches

18 Count, 5w X 5.5h inches

Uses 16 DMC cotton colours. Only full cross stitches are used in this pattern.

Pattern Instructions

* This pattern can be worked on any fabric type, colour or count you prefer. To work out the size of the finished article, take the number of stitches wide and high and divide it by the count of your fabric (e.14,16,18 count aida etc) to get the size in inches. Times it by 2.54 to get centimetres. We have the sizes in inches shown on the previous page. Also leave at least a few inches of fabric around each side of the design to assist in framing. The higher the fabric count the smaller the completed project will be.

* To put the pattern together look in the top and bottom corners. The page numbers in brackets show which page number it joins up to. Page 1 always starts at the top left hand side of the pattern. Our pages also have a shaded grey section. This indicates a 3 row overlap from adjoining pages to assist with reading the pattern. PLEASE DO NOT RESTITCH THIS AREA.

* You should begin at the centre of the pattern. To find the centre of the pattern it is just a matter of laying the pattern out and locating the arrows at the top and left hand side of the patterns, they are determined by dividing the stitch numbers wide and high in half. Where the two points meet in the middle, that is the centre.

* If you need more assistance to find the middle of your pattern or the page layout, please see the notes section on the colour symbol chart. The easiest way to stitch this pattern, as it has multiple pages, is to stitch one page at a time.

* We suggest using two strands of floss for each stitch and one strand for backstitching if the pattern calls for it.

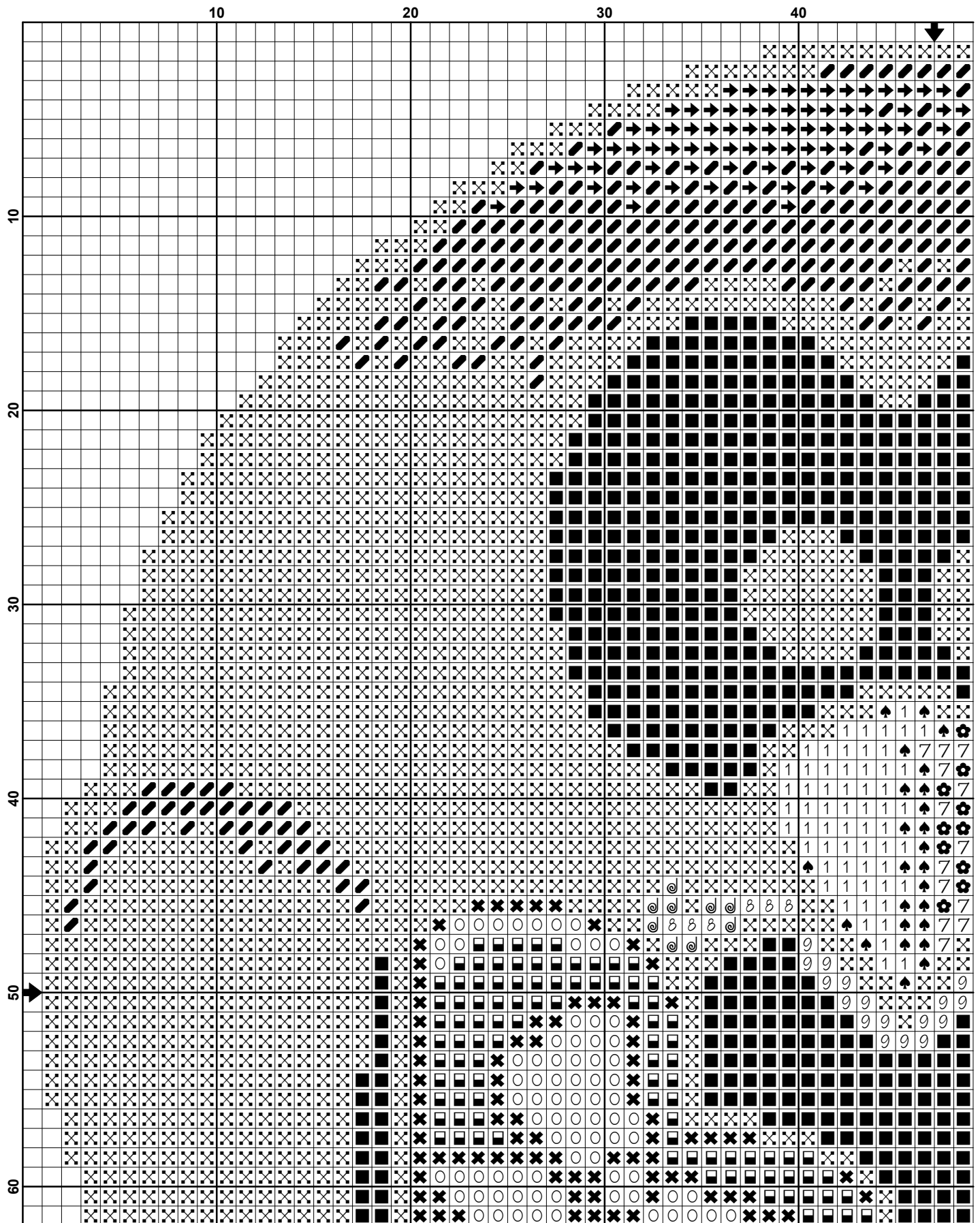
We hope you enjoy stitching our pattern.

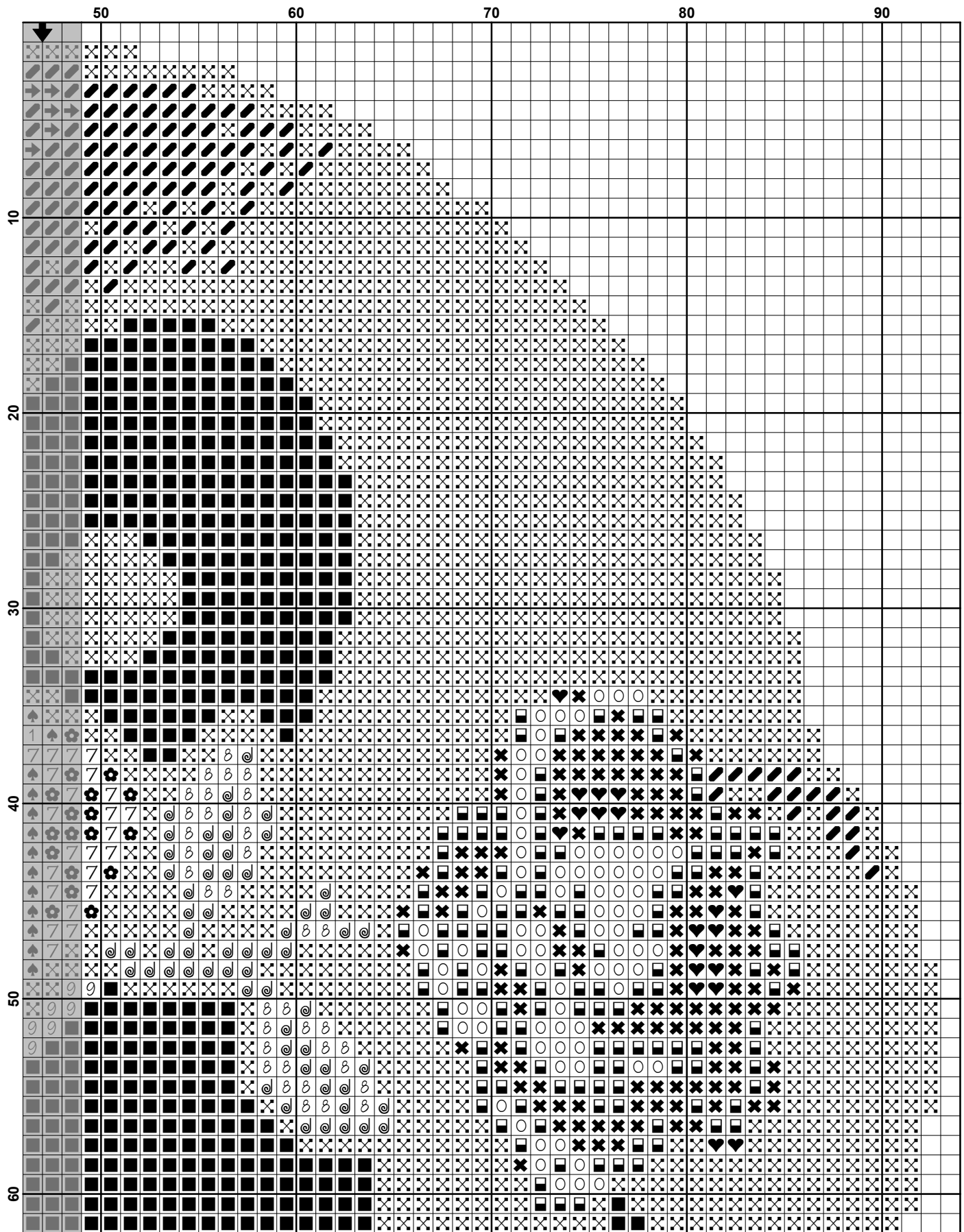
Thanks and Best Wishes
Tereena Clarke

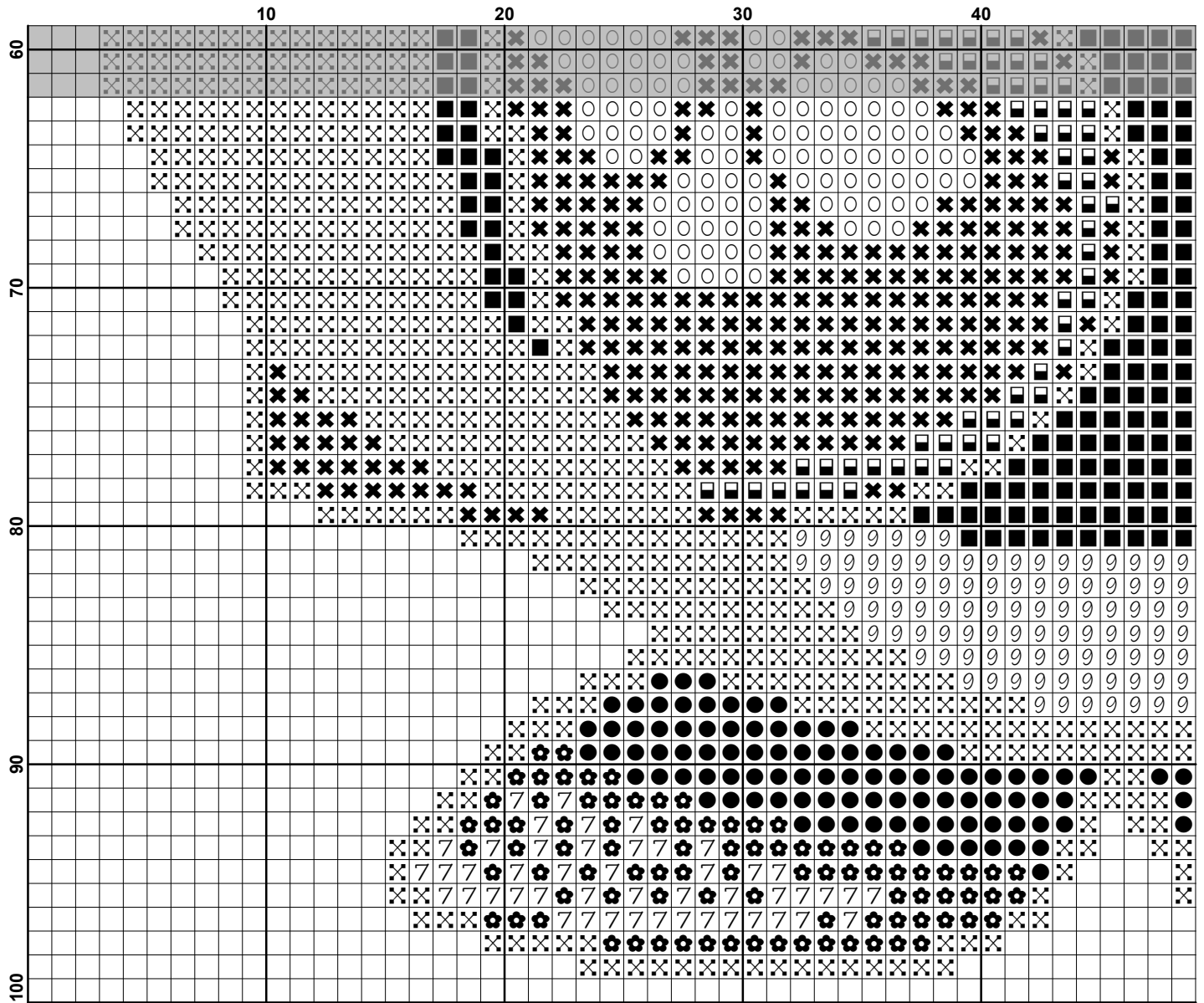
Artecy Cross Stitch
Po Box 3474
Tuggerah, NSW 2259
Australia

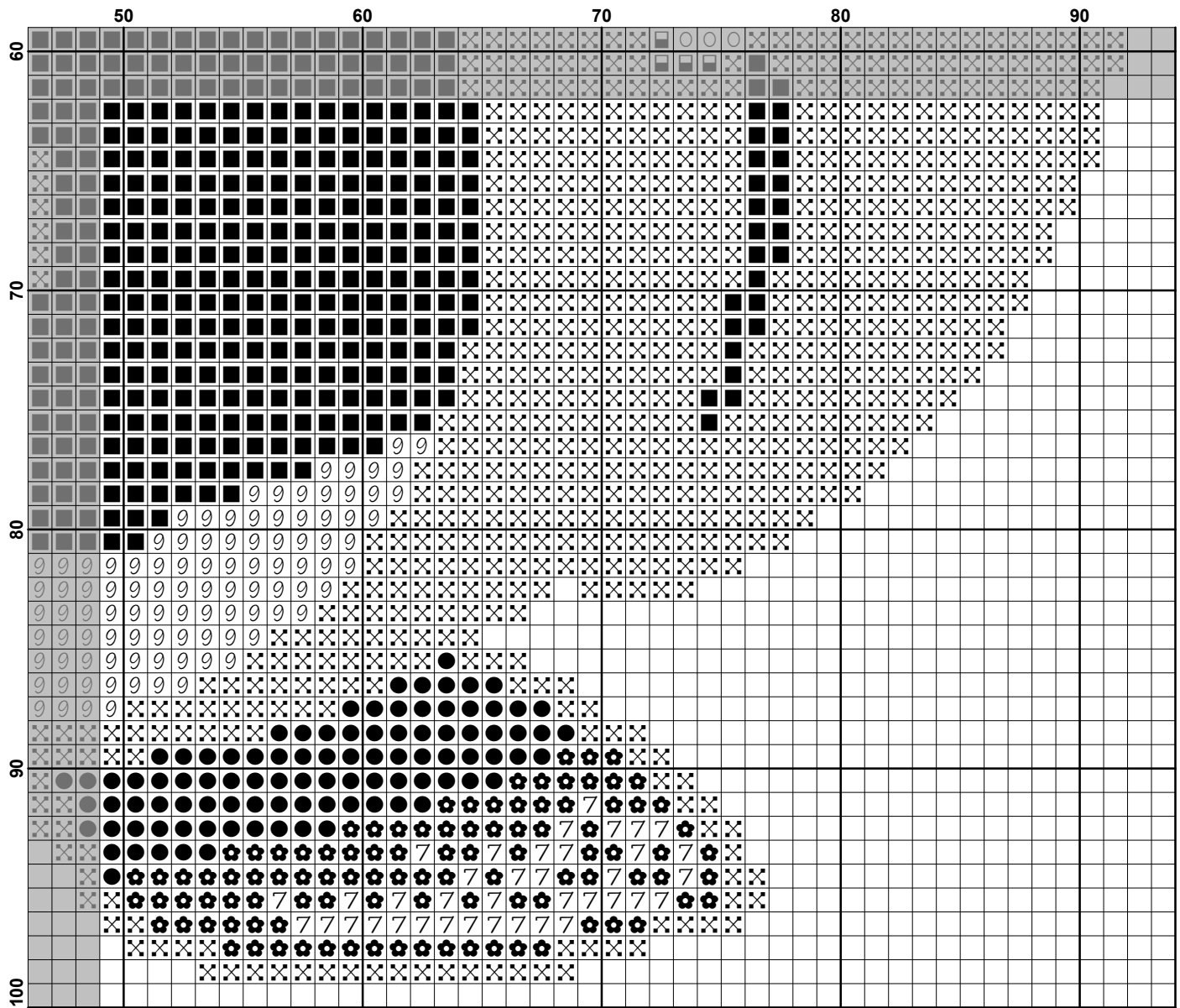
Website: www.artecy.com
Email: artecy@artecy.com or sls@comcen.com.au

*Patterns are strictly for personal use only. It is against our copyright to make kits for sale from our designs or to sell, copy or redistribute this pattern in any form. You may not upload our patterns to any internet forums or groups or any other website. You may make 1 copy of this pattern for a working copy for your own personal use if needed.


















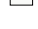






Pattern Name: Mini Valentine Penguin
Designed By: Image by Moini - Pixaba
Company: Artecy Cross Stitch
Copyright: Copyright Artecy Cross Stitch. All rights Reserved.
Fabric: Aida 14, White
 92w X 98h Stitches
Size(s): 14 Count, 6-1/2w X 7h in
 16 Count, 5-3/4w X 6-1/8h in
 18 Count, 5w X 5-3/8h in

Floss Used for Full Stitches:

Symbol	Strands	Type	Number	Color
	2	DMC	310	Black
	2	DMC	400	Mahogany-DK
	2	DMC	413	Pewter Gray-DK
	2	DMC	666	Christmas Red-BRT
	2	DMC	720	Orange Spice-DK
	2	DMC	728	Topaz
	2	DMC	740	Tangerine
	2	DMC	741	Tangerine-MD
	2	DMC	762	Pearl Gray-VY LT
	2	DMC	814	Garnet-DK
	2	DMC	817	Coral Red-VY DK
	2	DMC	905	Parrot Green-DK
	2	DMC	906	Parrot Green-MD
	2	DMC	3799	Pewter Gray-VY DK
	2	DMC	3801	Christmas Red-LT
	2	DMC	3865	Winter White

Notes:

The middle of this pattern can be found on page 1 and is 47 stitches across and 50 stitches down.

Pattern layout using page numbers in top left.

1 2
 3 4

Usage Summary

Strands Per Skein: 6

Skein Length: 313.0 in

Type	Number	Full	Half	Quarter	Petite	Back(in)	Str(in)	Spec(in)	French	Bead	Skein Est.
■ DMC	310	3268	0	0	0	0.0	0.0	0.0	0	0	2.000
■ DMC	400	190	0	0	0	0.0	0.0	0.0	0	0	1.000
■ DMC	413	81	0	0	0	0.0	0.0	0.0	0	0	1.000
■ DMC	666	286	0	0	0	0.0	0.0	0.0	0	0	1.000
■ DMC	720	210	0	0	0	0.0	0.0	0.0	0	0	1.000
■ DMC	728	60	0	0	0	0.0	0.0	0.0	0	0	1.000
■ DMC	740	108	0	0	0	0.0	0.0	0.0	0	0	1.000
■ DMC	741	25	0	0	0	0.0	0.0	0.0	0	0	1.000
■ DMC	762	195	0	0	0	0.0	0.0	0.0	0	0	1.000
■ DMC	814	19	0	0	0	0.0	0.0	0.0	0	0	1.000
■ DMC	817	485	0	0	0	0.0	0.0	0.0	0	0	1.000
■ DMC	905	70	0	0	0	0.0	0.0	0.0	0	0	1.000
■ DMC	906	42	0	0	0	0.0	0.0	0.0	0	0	1.000
■ DMC	3799	346	0	0	0	0.0	0.0	0.0	0	0	1.000
■ DMC	3801	238	0	0	0	0.0	0.0	0.0	0	0	1.000
■ DMC	3865	1256	0	0	0	0.0	0.0	0.0	0	0	1.000