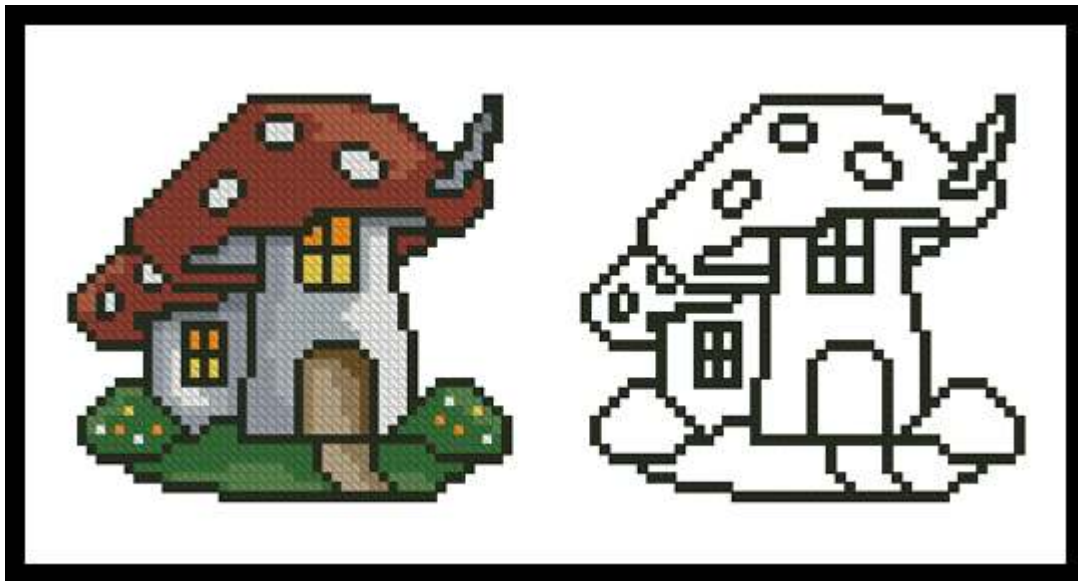


Mushroom House

Colour with Cross Stitch Collection



Cross Stitch Design by Tereena Clarke.

Completed Size = 47w X 43h Stitches

14 Count, 3.5w X 3.5h inches (9cm x 9cm)

16 Count, 3w X 3h inches (8cm x 8cm)

18 Count, 3w X 2.5h inches (8cm x 6cm)

Uses 14 DMC cotton colours. Only full cross stitches are used in this pattern.

Stitch the design in full as it is or stitch all the ♥ black heart symbols for the outline and then fill in with colours of your choice. A practice page is included on the last page of this design so you can colour it in and then match with similar cotton colours of your choice.

Pattern Instructions

* This pattern can be worked on any fabric type, colour or count you prefer. To work out the size of the finished article, take the number of stitches wide and high and divide it by the count of your fabric (e.g. 14,16,18 count aida etc) to get the size in inches. Times it by 2.54 to get centimetres. We have the sizes in inches shown on the previous page. Also leave at least a few inches of fabric around each side of the design to assist in framing. The higher the fabric count the smaller the completed project will be.

* To put the pattern together look in the top and bottom corners. The page numbers in brackets show which page number it joins up to. Page 1 always starts at the top left hand side of the pattern. Our pages also have a shaded grey section. This indicates a 3 row overlap from adjoining pages to assist with reading the pattern. PLEASE DO NOT RESTITCH THIS AREA.

* You should begin at the centre of the pattern. To find the centre of the pattern it is just a matter of laying the pattern out and locating the arrows at the top and left hand side of the patterns, they are determined by dividing the stitch numbers wide and high in half. Where the two points meet in the middle, that is the centre.

* If you need more assistance to find the middle of your pattern or the page layout, please see the notes section on the colour symbol chart. The easiest way to stitch this pattern, as it has multiple pages, is to stitch one page at a time.

* We suggest using two strands of floss for each stitch and one strand for backstitching if the pattern calls for it.

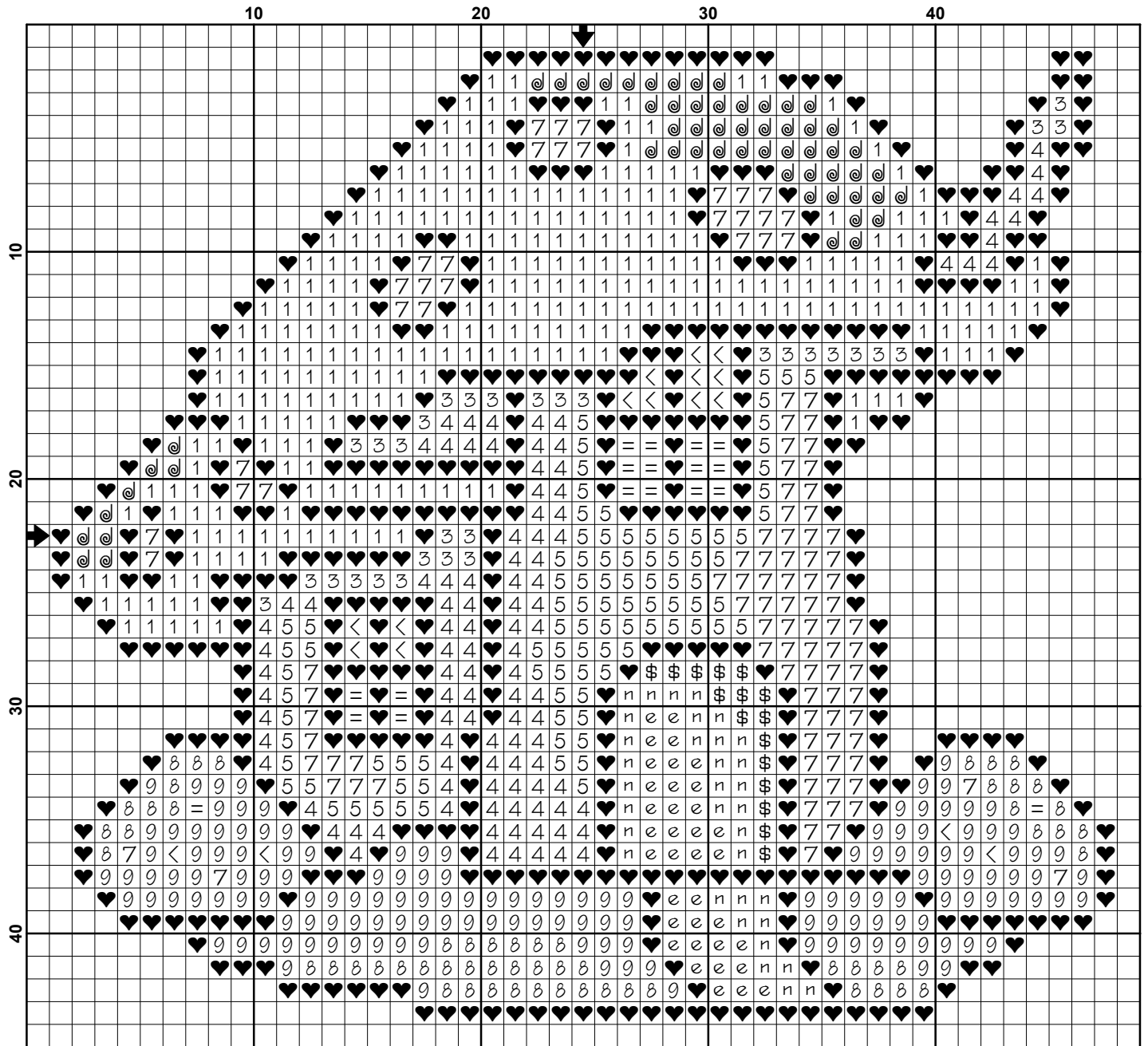
We hope you enjoy stitching our pattern.

Thanks and Best Wishes
Tereena Clarke

Artecy Cross Stitch
Po Box 3474
Tuggerah, NSW 2259
Australia

Websites: www.artecy.com and www.artecyshop.com
Email: artecy@artecy.com or stitch@artecyshop.com

*Patterns are strictly for personal use only. It is against our copyright to make kits for sale from our designs or to sell, copy or redistribute this pattern in any form. You may not upload our patterns to any internet forums or groups or any other website. You may make 1 copy of this pattern for a working copy for your own personal use if needed.



Pattern Name: Mushroom House
Designed By: Tereena Clarke
Company: Artecy Cross Stitch
Copyright: Copyright Artecy Cross Stitch. All rights Reserved.
Fabric: Aida 14, White
 47w X 43h Stitches
Size(s): 14 Count, 3-1/4w X 3h in
 16 Count, 2-7/8w X 2-5/8h in
 18 Count, 2-1/2w X 2-3/8h in

Floss Used for Full Stitches:

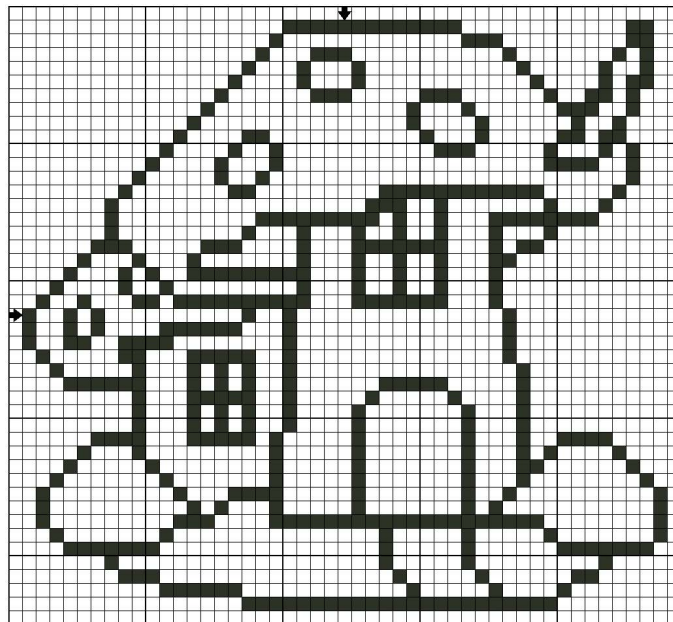
Symbol	Strands	Type	Number	Color
■	2	DMC	310	Black
■	4	DMC	318	Steel Gray-LT
■	3	DMC	414	Steel Gray-DK
■	5	DMC	415	Pearl Gray
■	2	DMC	433	Brown-MD
■	2	DMC	741	Tangerine-MD
■	2	DMC	743	Yellow-MD
■	2	DMC	986	Forest Green-VY DK
■	2	DMC	987	Forest Green-DK
■	2	DMC	3777	Terra Cotta-VY DK
■	2	DMC	3830	Terra Cotta-MD
■	2	DMC	3863	Mocha Beige-MD
■	2	DMC	3864	Mocha Beige-LT
■	2	DMC	3865	Winter White

Usage Summary

Strands Per Skein: 6

Skein Length: 313.0 in

Type	Number	Full	Half	Quarter	Petite	Back(in)	Str(in)	Spec(in)	French	Bead	Skein Est.
■ DMC	310	449	0	0	0	0.0	0.0	0.0	0	0	1.000
■ DMC	318	102	0	0	0	0.0	0.0	0.0	0	0	1.000
■ DMC	414	31	0	0	0	0.0	0.0	0.0	0	0	1.000
■ DMC	415	94	0	0	0	0.0	0.0	0.0	0	0	1.000
■ DMC	433	16	0	0	0	0.0	0.0	0.0	0	0	1.000
■ DMC	741	17	0	0	0	0.0	0.0	0.0	0	0	1.000
■ DMC	743	18	0	0	0	0.0	0.0	0.0	0	0	1.000
■ DMC	986	151	0	0	0	0.0	0.0	0.0	0	0	1.000
■ DMC	987	59	0	0	0	0.0	0.0	0.0	0	0	1.000
■ DMC	3777	286	0	0	0	0.0	0.0	0.0	0	0	1.000
■ DMC	3830	58	0	0	0	0.0	0.0	0.0	0	0	1.000
■ DMC	3863	34	0	0	0	0.0	0.0	0.0	0	0	1.000
■ DMC	3864	36	0	0	0	0.0	0.0	0.0	0	0	1.000
■ DMC	3865	109	0	0	0	0.0	0.0	0.0	0	0	1.000



This page is a practice page for you to colour in and then match with similar cotton colours of your choice. We allow you to make 1 enlarged copy if you like for personal use only. This page is copyright of the original artist and Artec Cross Stitch and is for personal use only.