

Muskegon Lighthouse at Sunset



* Original image copyright of JosephJohn - Pixabay.
Cross Stitch Design by Tereena Clarke.

Completed Size = 300w X 211h Stitches

14 Count, 21.5w X 15.5h inches

16 Count, 19w X 13.5h inches

18 Count, 17w X 12h inches

Uses 42 DMC cotton colours. Only full cross stitches are used in this pattern.

Pattern Instructions

* This pattern can be worked on any fabric type, colour or count you prefer. To work out the size of the finished article, take the number of stitches wide and high and divide it by the count of your fabric (e.14,16,18 count aida etc) to get the size in inches. Times it by 2.54 to get centimetres. We have the sizes in inches shown on the previous page. Also leave at least a few inches of fabric around each side of the design to assist in framing. The higher the fabric count the smaller the completed project will be.

* To put the pattern together look in the top and bottom corners. The page numbers in brackets show which page number it joins up to. Page 1 always starts at the top left hand side of the pattern. Our pages also have a shaded grey section. This indicates a 3 row overlap from adjoining pages to assist with reading the pattern. PLEASE DO NOT RESTITCH THIS AREA.

* You should begin at the centre of the pattern. To find the centre of the pattern it is just a matter of laying the pattern out and locating the arrows at the top and left hand side of the patterns, they are determined by dividing the stitch numbers wide and high in half. Where the two points meet in the middle, that is the centre.

* If you need more assistance to find the middle of your pattern or the page layout, please see the notes section on the colour symbol chart. The easiest way to stitch this pattern, as it has multiple pages, is to stitch one page at a time.

* We suggest using two strands of floss for each stitch and one strand for backstitching if the pattern calls for it.

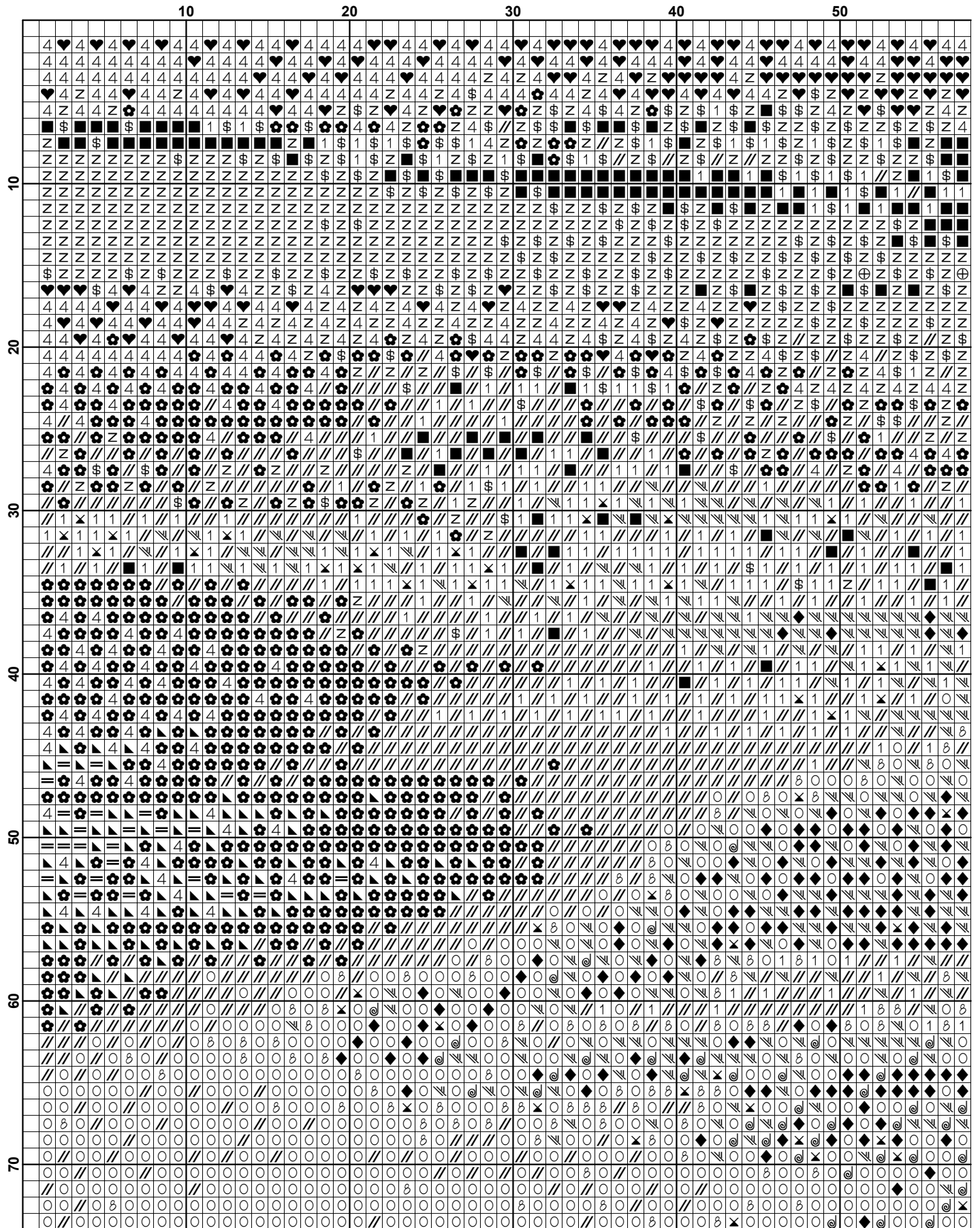
We hope you enjoy stitching our pattern.

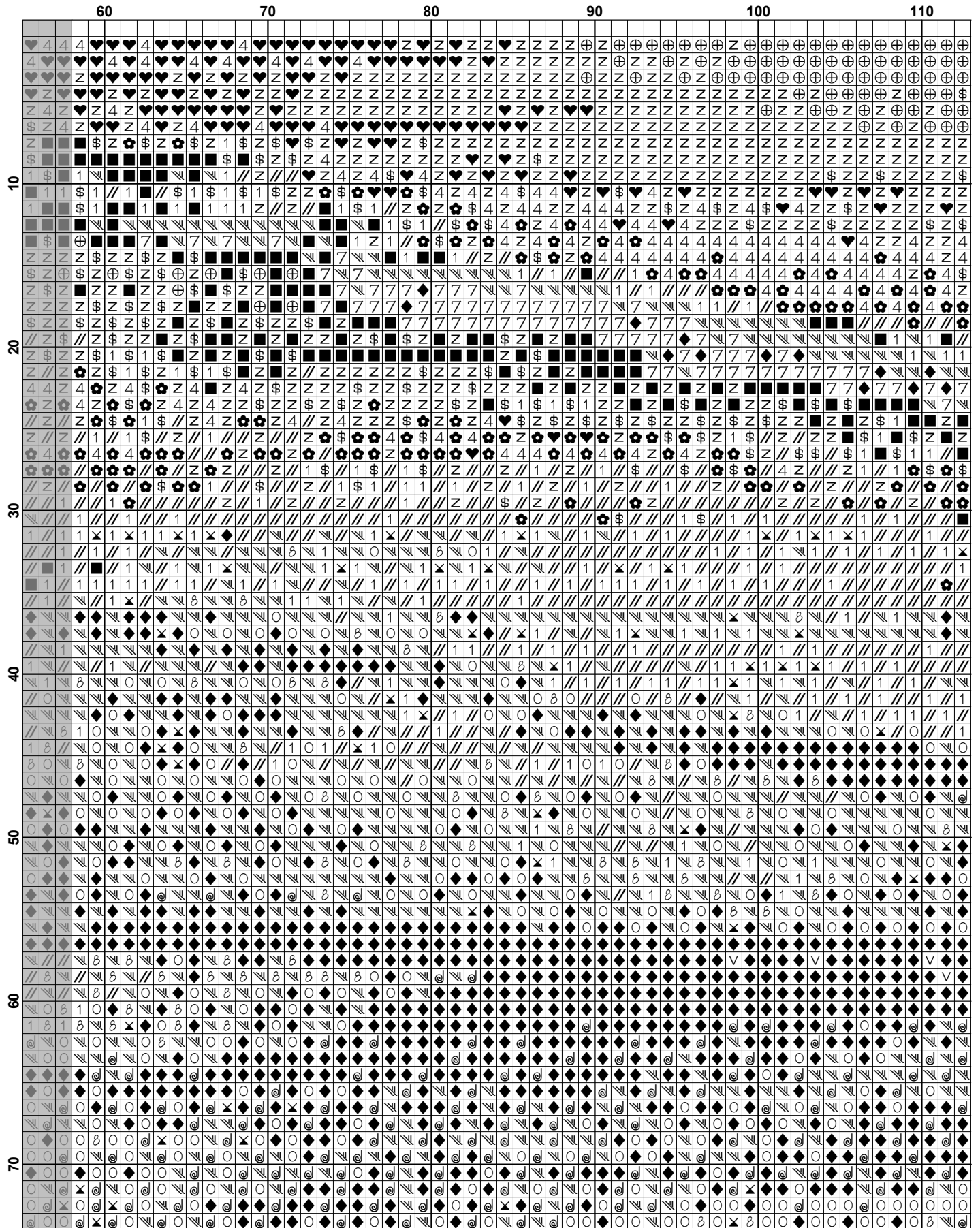
Thanks and Best Wishes
Tereena Clarke

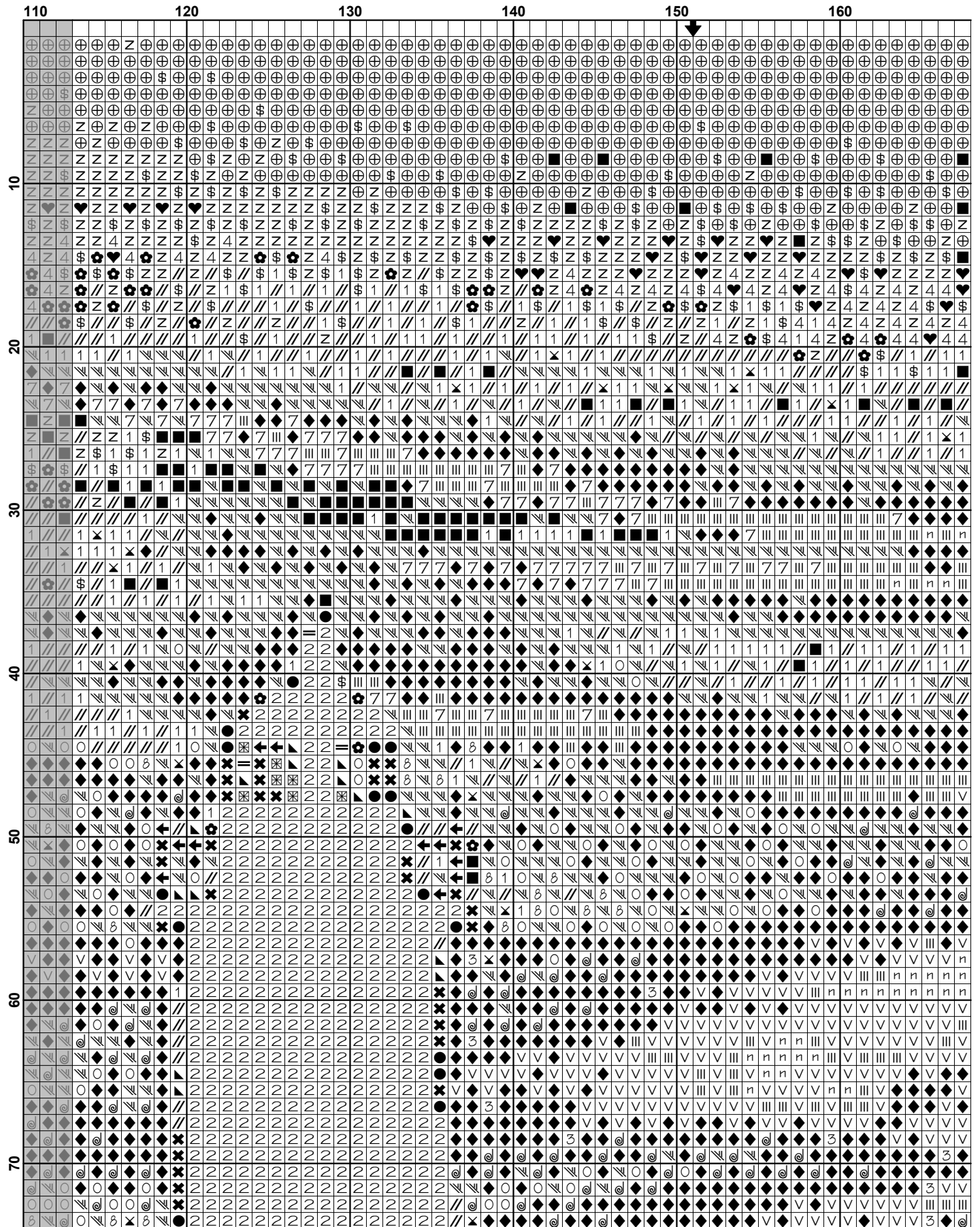
Artecy Cross Stitch
Po Box 3474
Tuggerah, NSW 2259
Australia

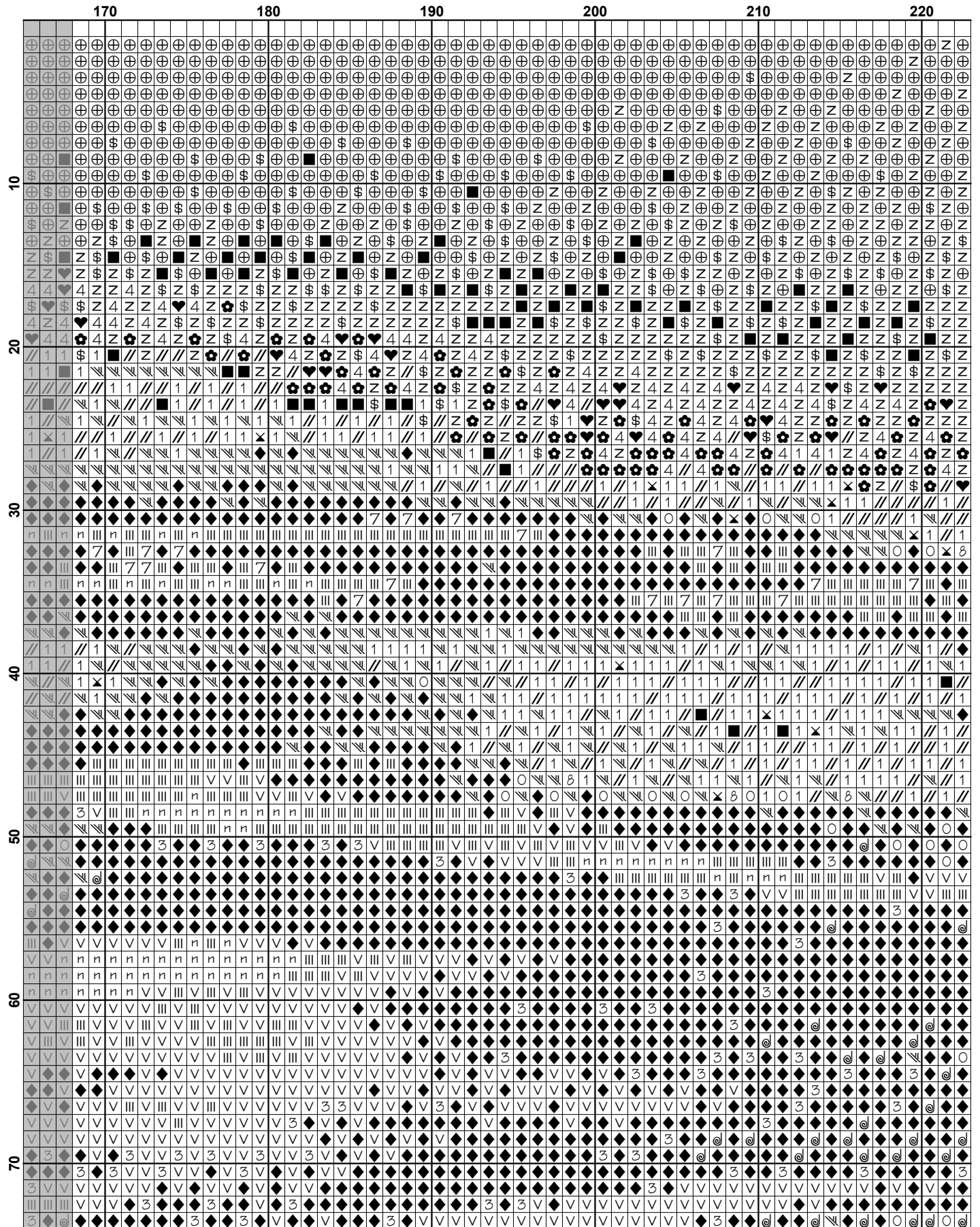
Website: www.artecy.com
Email: artecy@artecy.com or sls@comcen.com.au

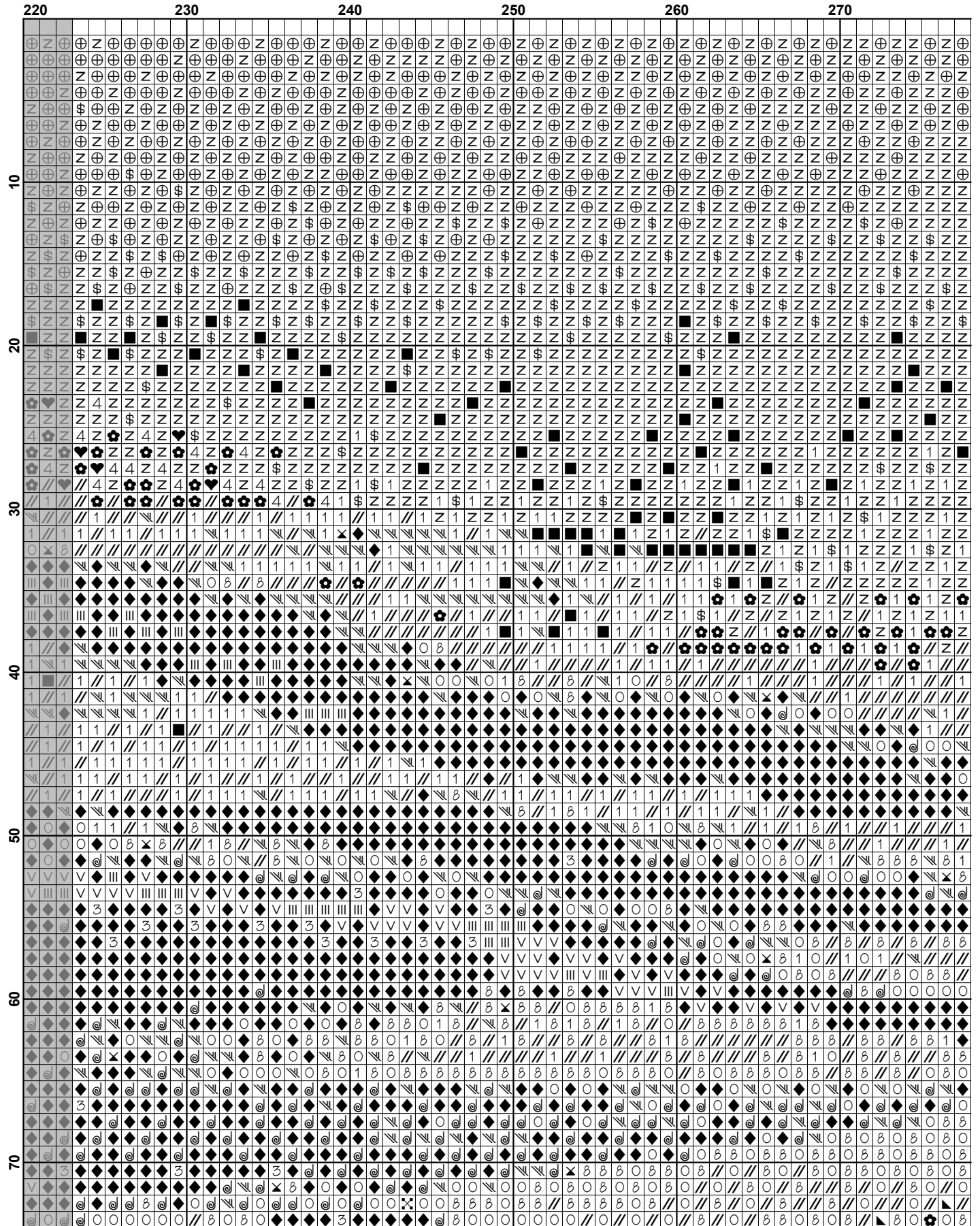
*Patterns are strictly for personal use only. It is against our copyright to make kits for sale from our designs or to sell, copy or redistribute this pattern in any form. You may not upload our patterns to any internet forums or groups or any other website. You may make 1 copy of this pattern for a working copy for your own personal use if needed.

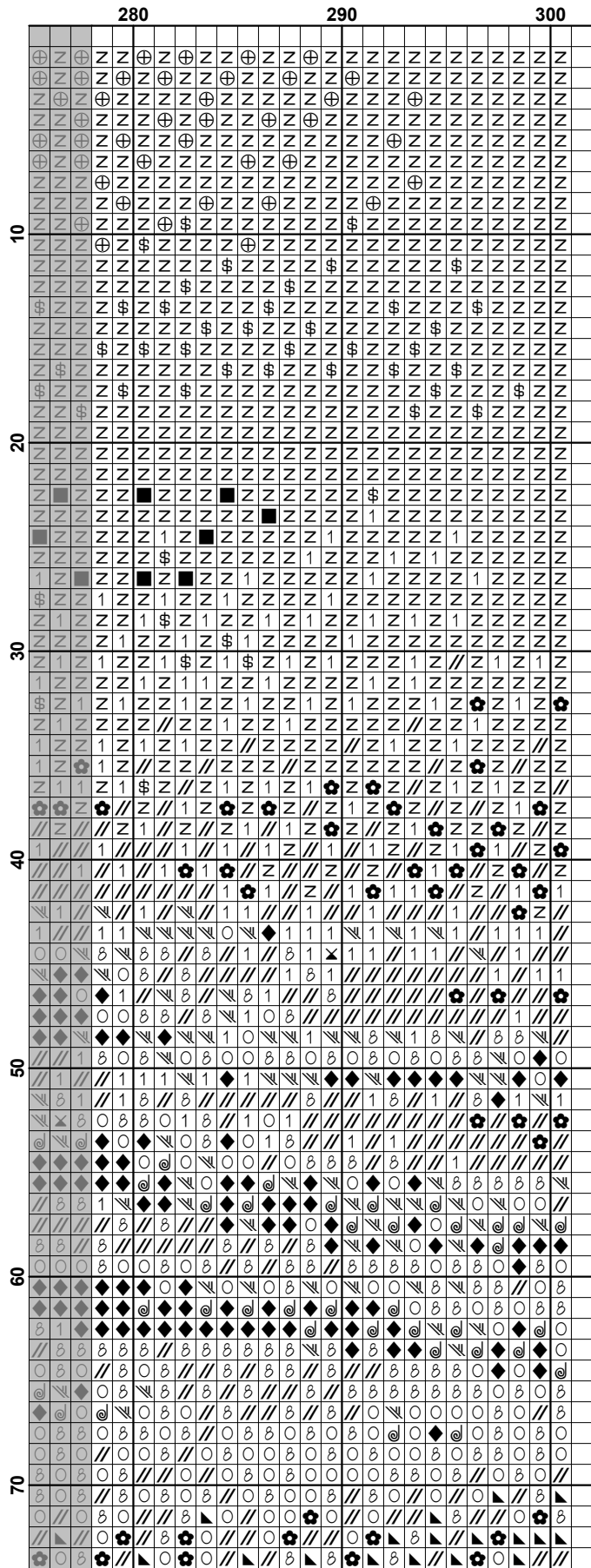


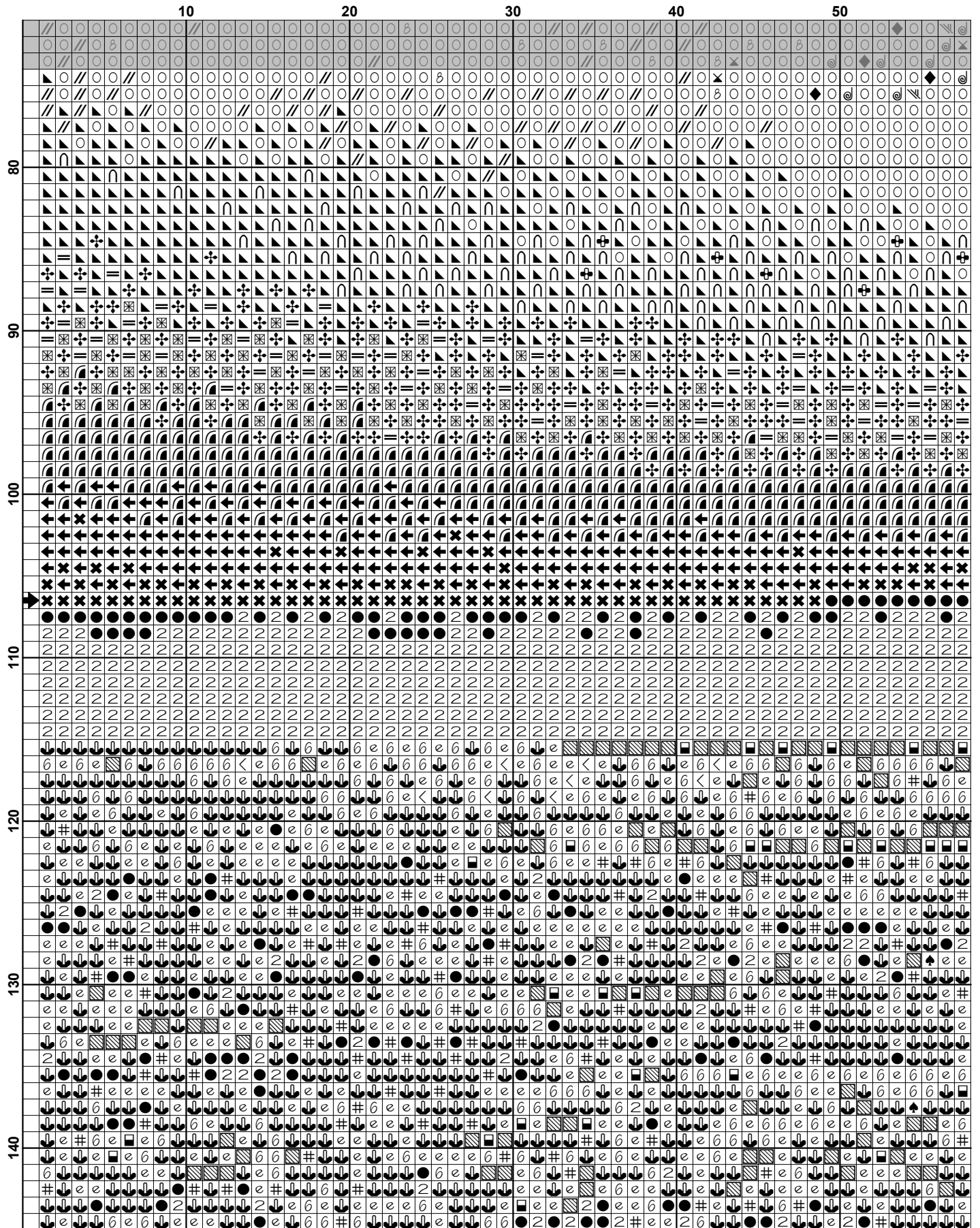


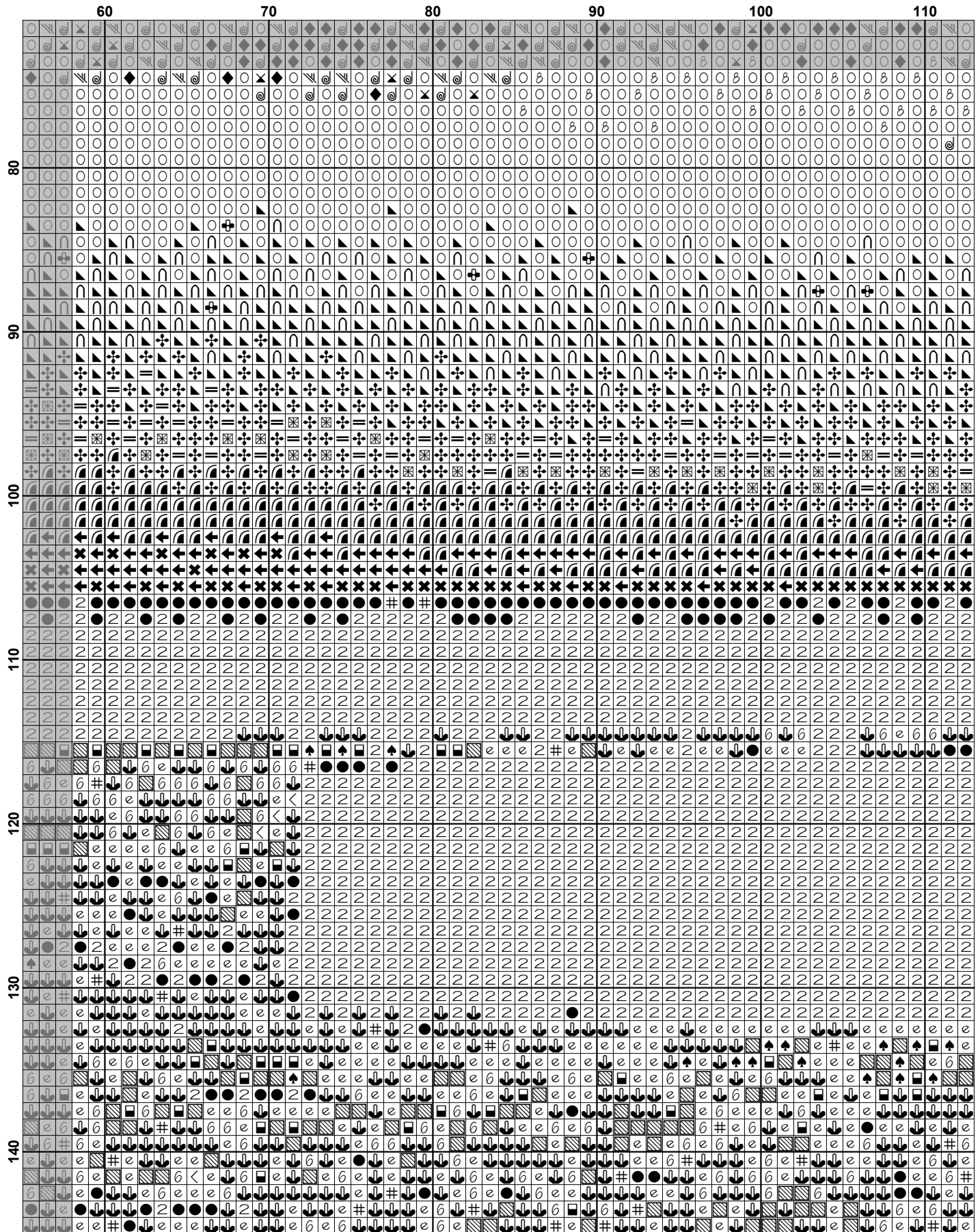


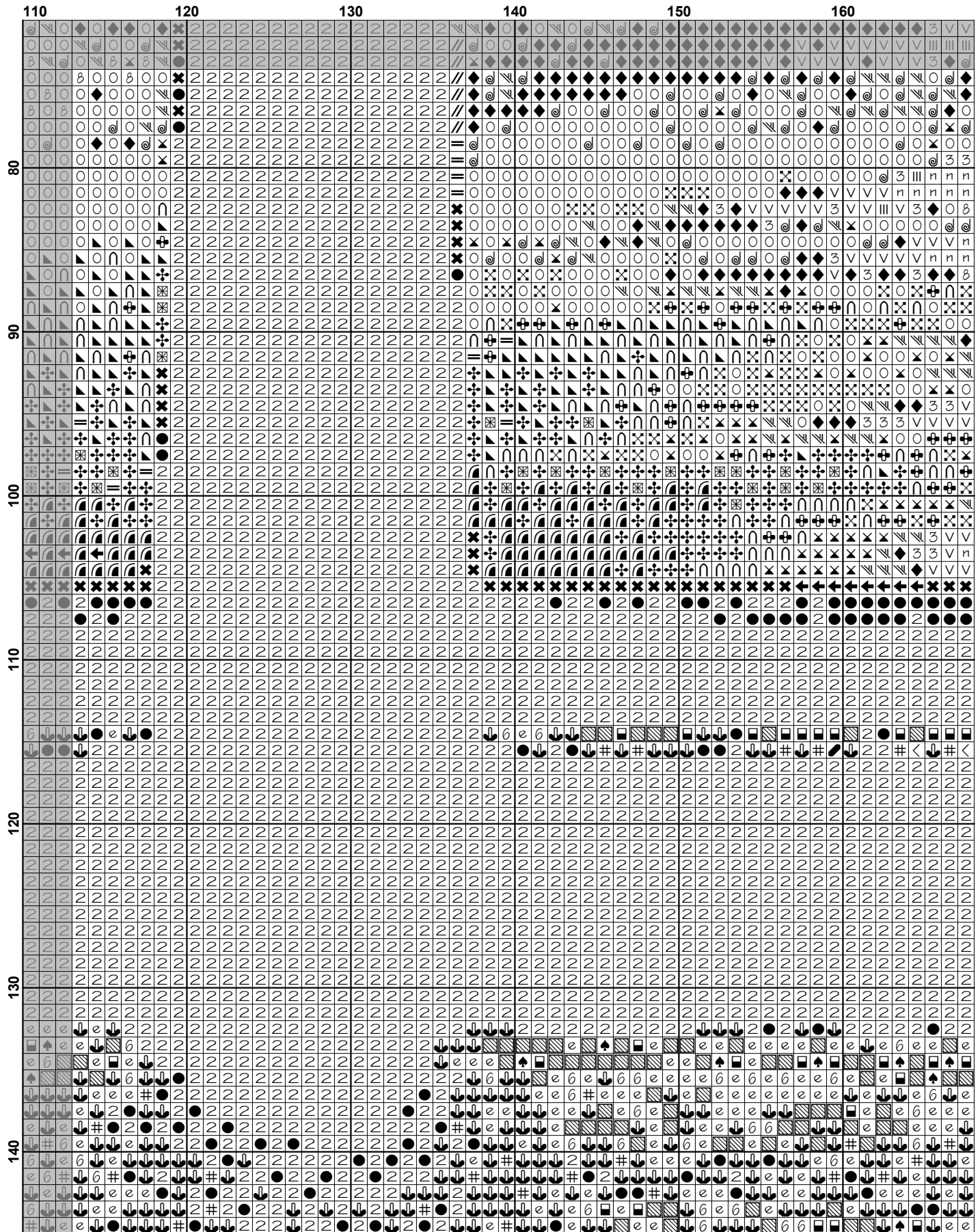


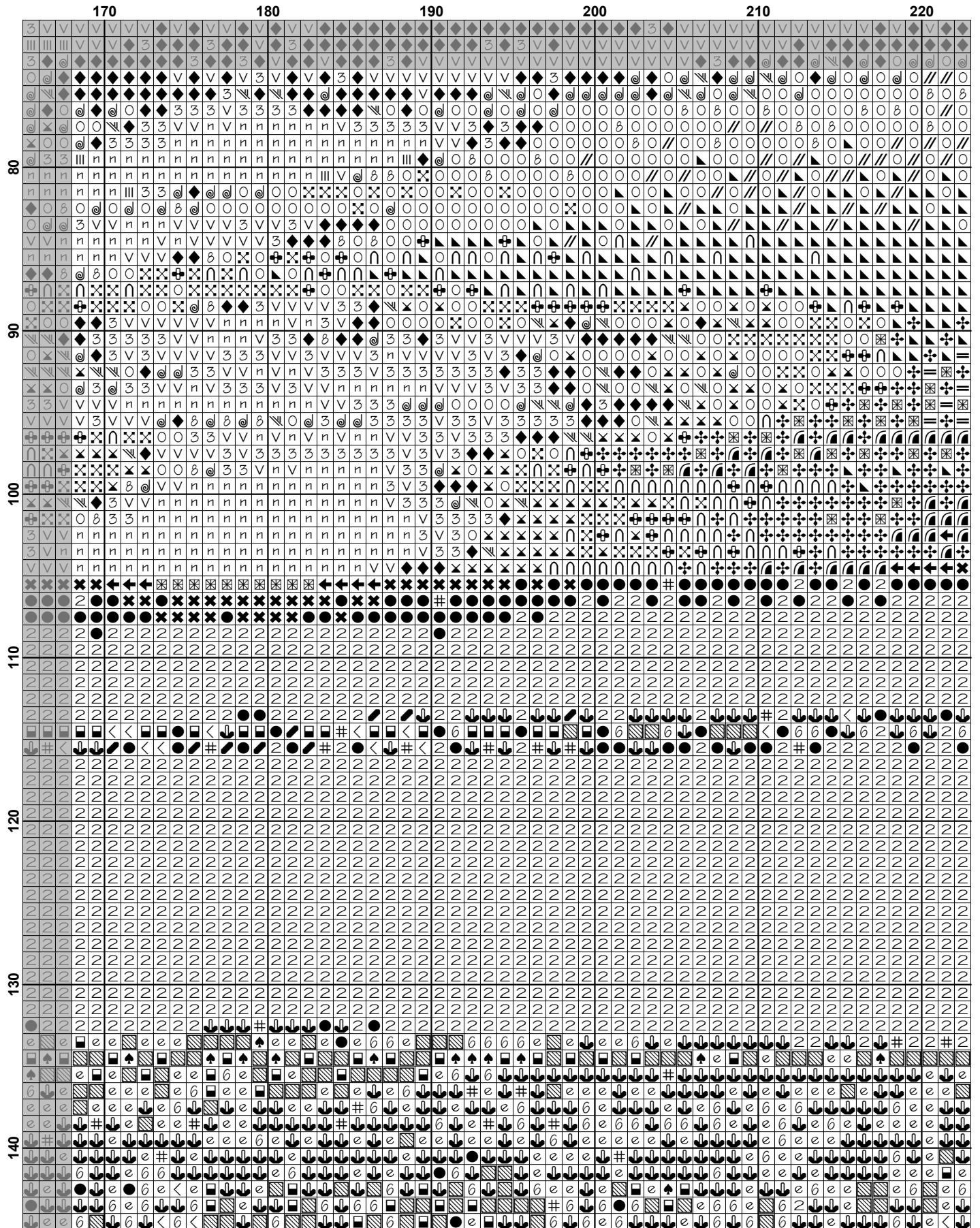


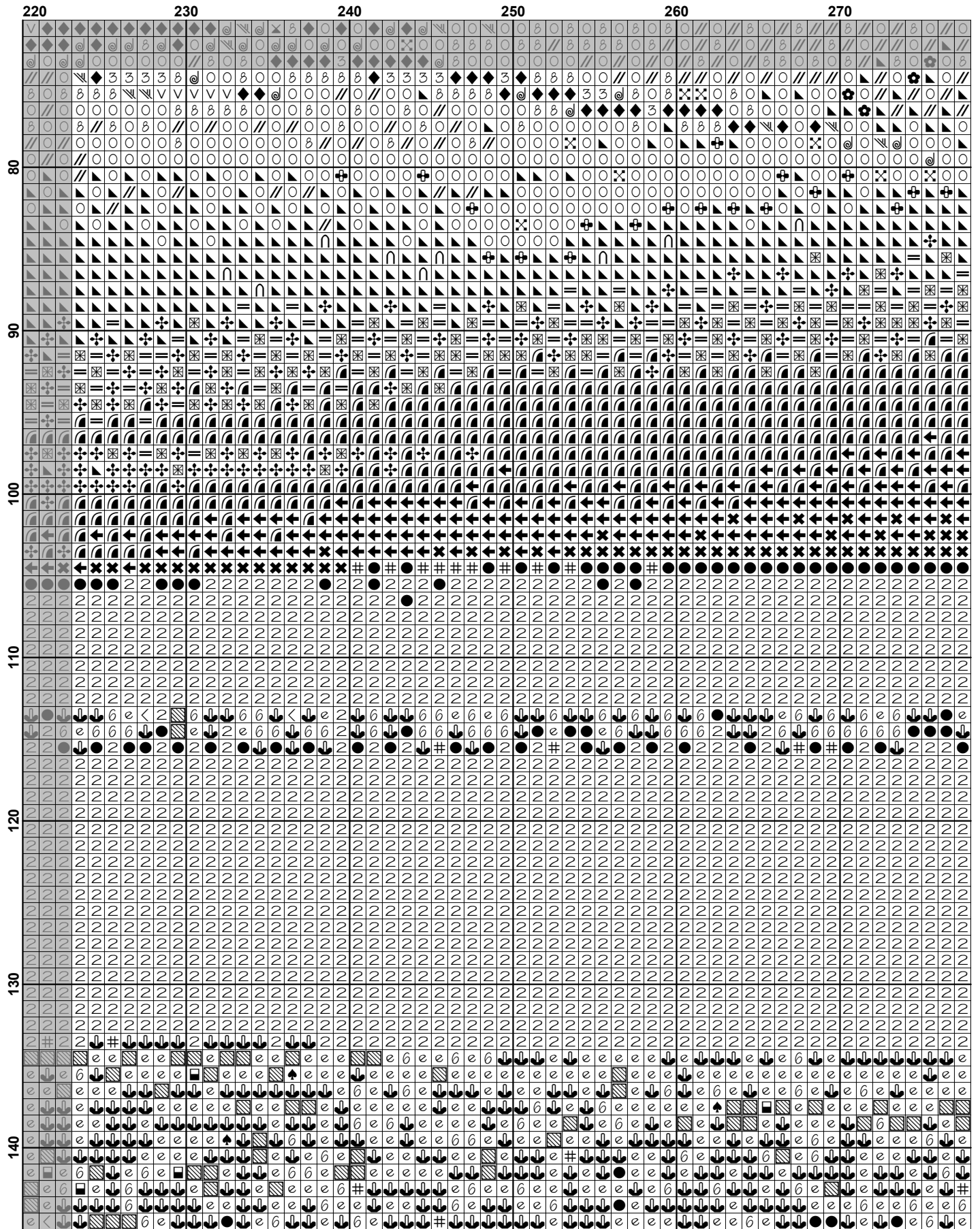


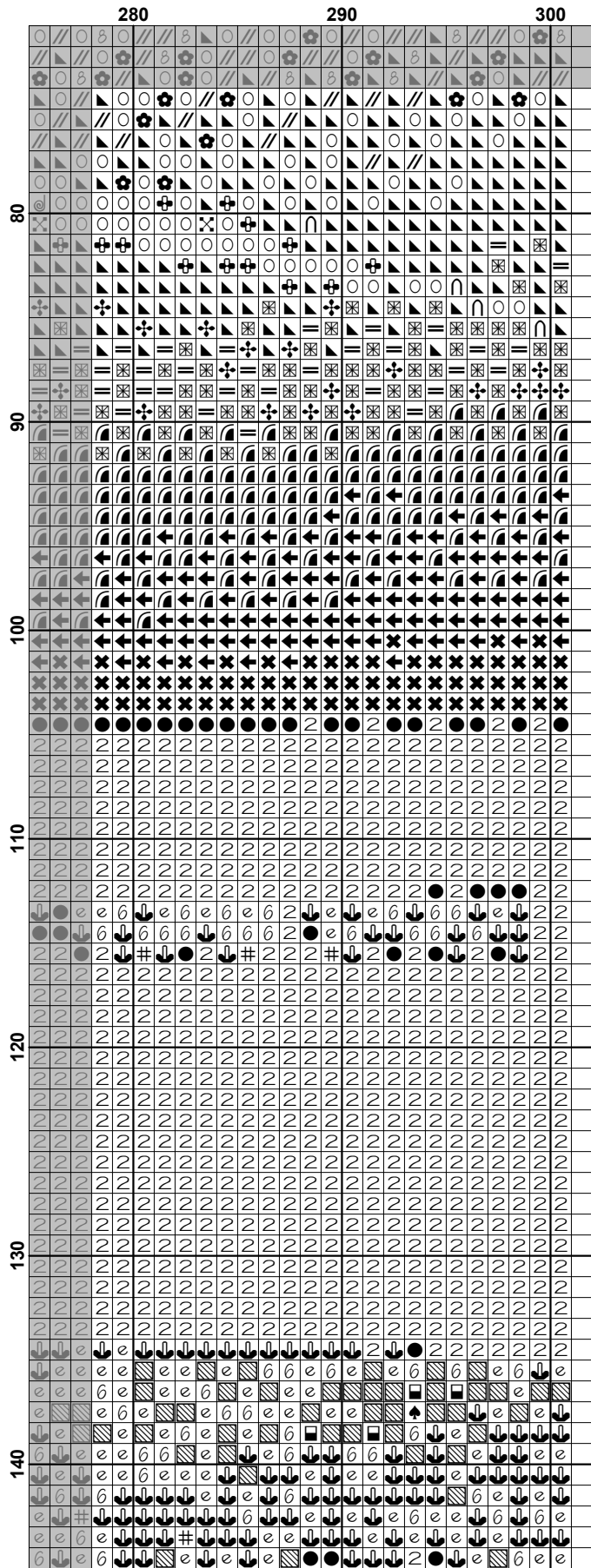


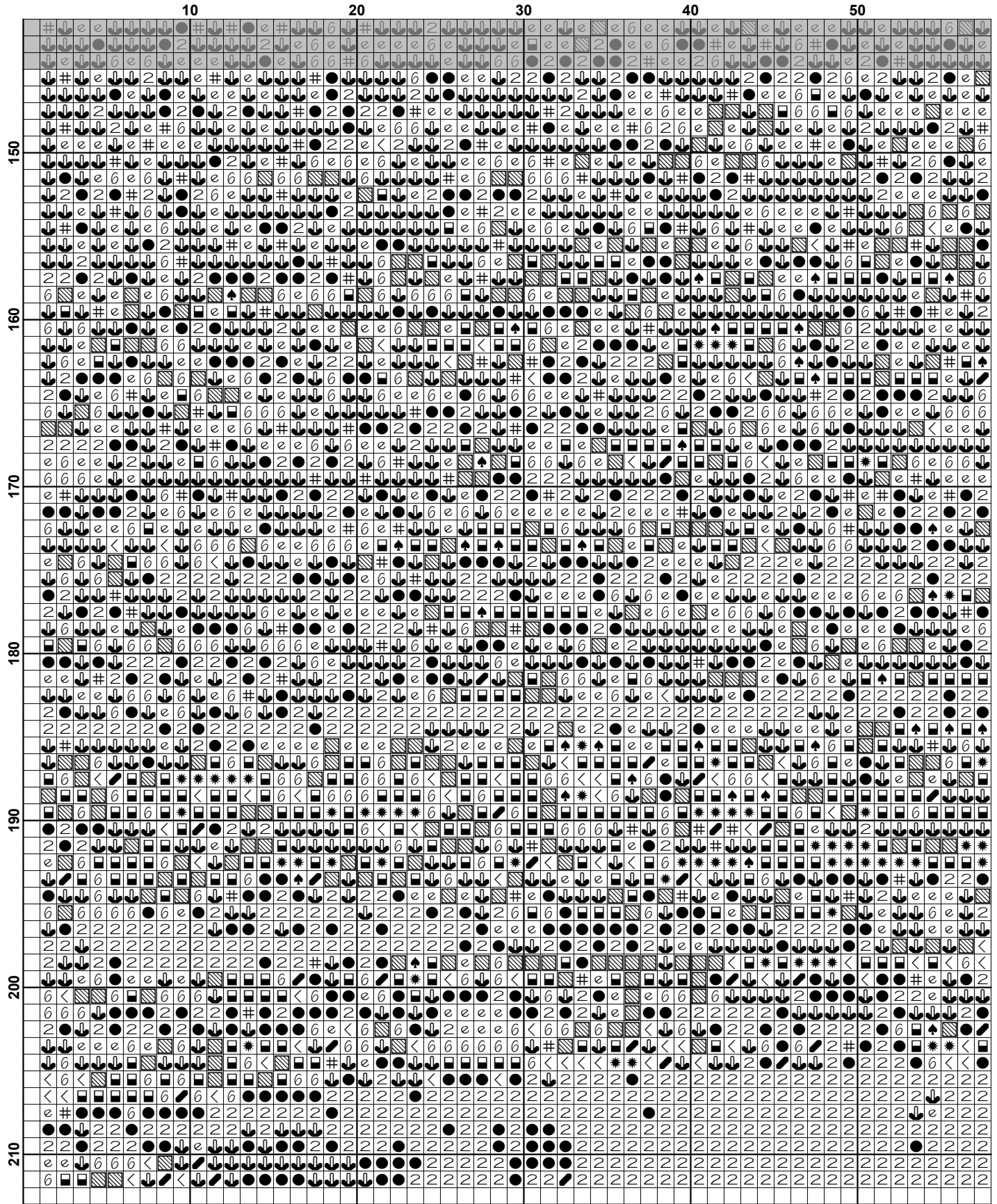


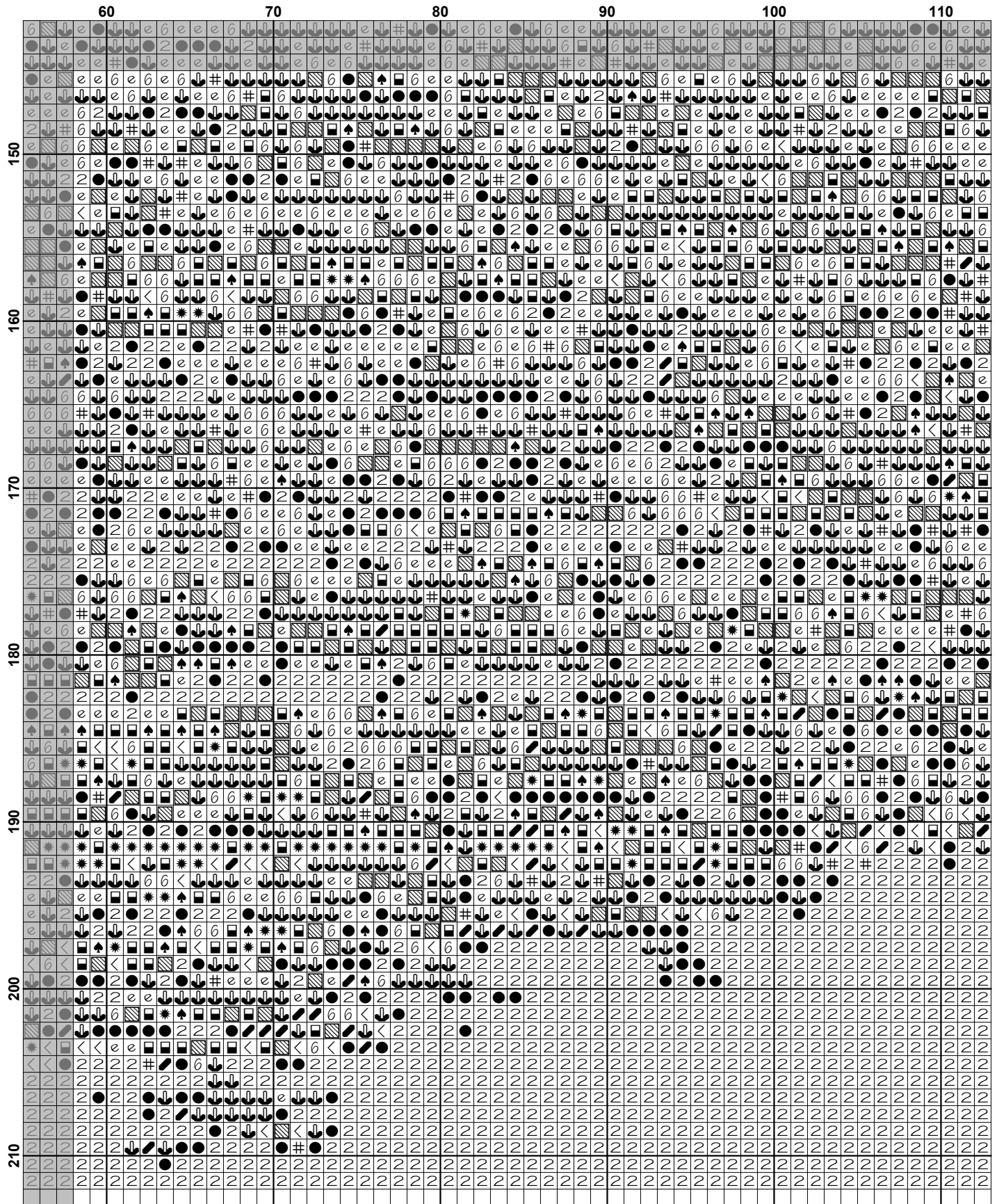


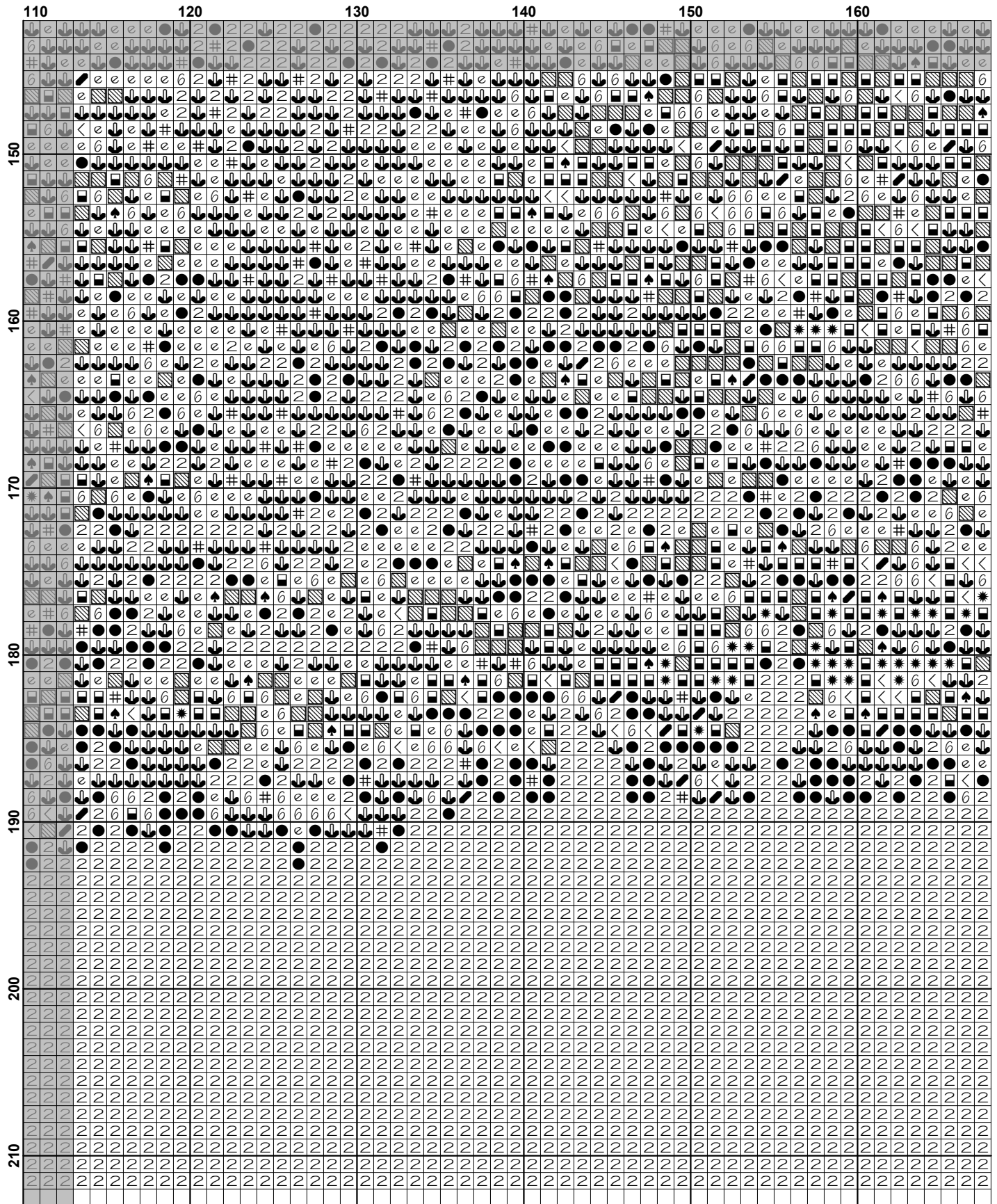


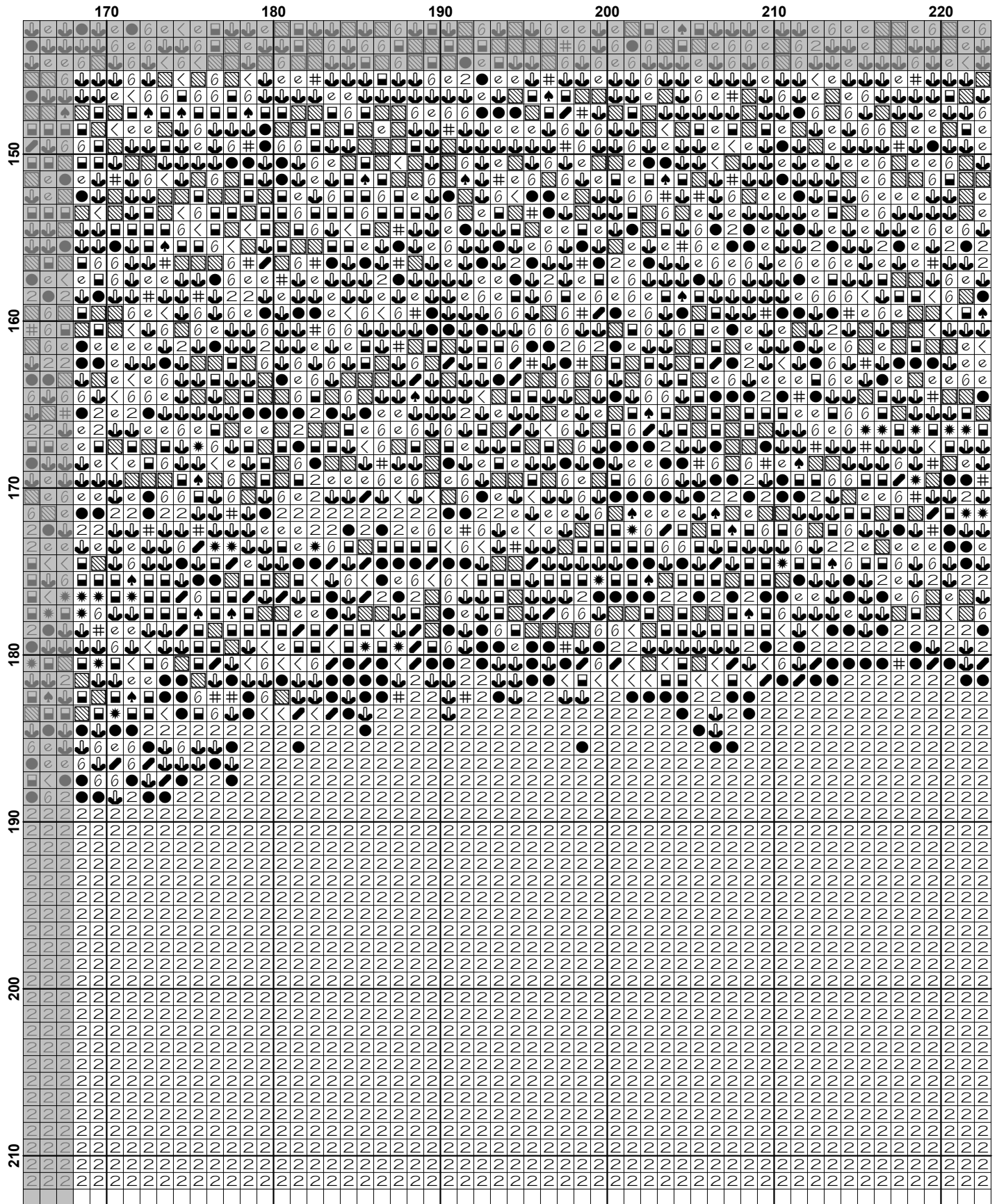


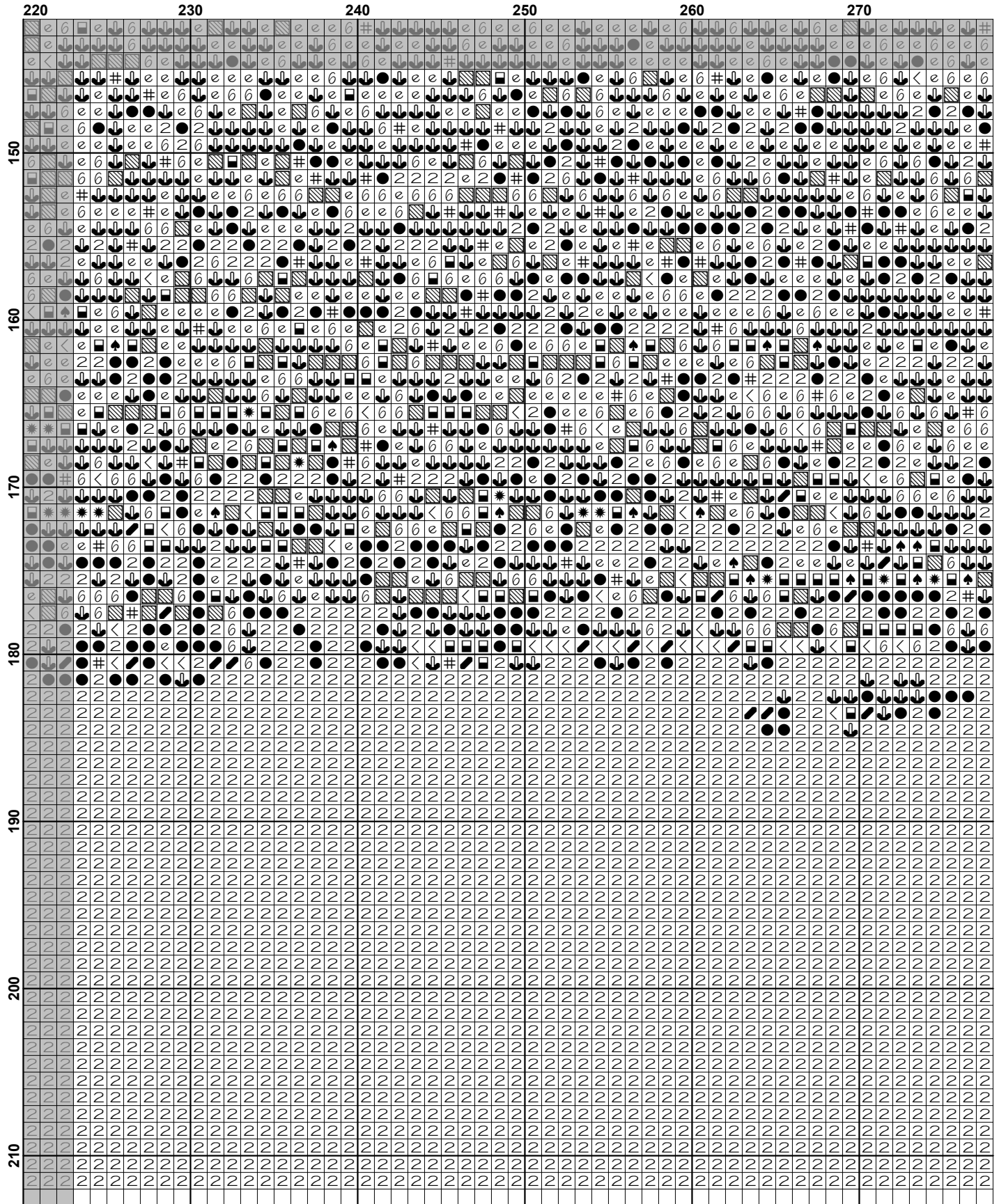


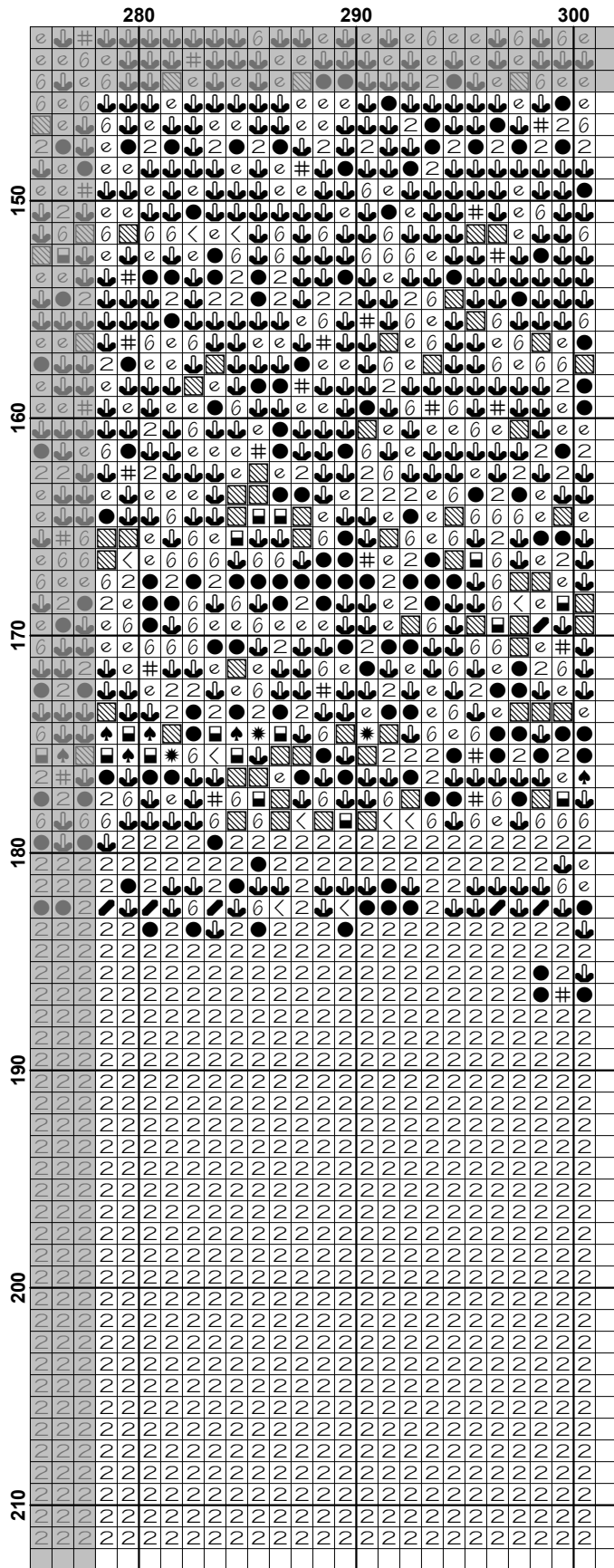













Pattern Name: Muskegon Lighthouse at Sunset
Designed By: Image by JosephJohn - Pixabay
Company: Artecy Cross Stitch
Copyright: Copyright Artecy Cross Stitch. All rights Reserved.
Fabric: Aida 14, White
 300w X 211h Stitches
Size(s): 14 Count, 21-3/8w X 15h in
 16 Count, 18-3/4w X 13-1/8h in
 18 Count, 16-5/8w X 11-5/8h in

Floss Used for Full Stitches:

Symbol	Strands	Type	Number	Color
	2	DMC	310	Black
	2	DMC	317	Pewter Gray
	2	DMC	347	Salmon-VY DK
	2	DMC	350	Coral-MD
	2	DMC	355	Terra Cotta-DK
	2	DMC	356	Terra Cotta-MD
	2	DMC	402	Mahogany-VY LT
	2	DMC	413	Pewter Gray-DK
	2	DMC	436	Tan
	2	DMC	437	Tan-LT
	2	DMC	535	Ash Gray-VY LT
	2	DMC	720	Orange Spice-DK
	2	DMC	721	Orange Spice-MD
	2	DMC	722	Orange Spice-LT
	2	DMC	725	Topaz
	2	DMC	726	Topaz-LT
	2	DMC	728	Topaz
	2	DMC	741	Tangerine-MD
	2	DMC	743	Yellow-MD
	2	DMC	815	Garnet-MD
	2	DMC	816	Garnet
	2	DMC	839	Beige Brown-DK
	2	DMC	844	Beaver Brown-UL DK
	2	DMC	920	Copper-MD
	2	DMC	921	Copper
	2	DMC	922	Copper-LT
	2	DMC	938	Coffee Brown-UL DK
	2	DMC	970	Pumpkin-LT
	2	DMC	977	Golden Brown-LT
	2	DMC	3031	Mocha Brown-VY DK
	2	DMC	3340	Apricot-MD
	2	DMC	3371	Black Brown
	2	DMC	3776	Mahogany-LT
	2	DMC	3778	Terra Cotta-LT
	2	DMC	3787	Brown Gray-DK
	2	DMC	3799	Pewter Gray-VY DK
	2	DMC	3827	Golden Brown-Pale
	2	DMC	3830	Terra Cotta-MD
	2	DMC	3853	Autumn Gold-DK
	2	DMC	3854	Autumn Gold-MD
	2	DMC	3859	Rosewood-LT
	2	DMC	3860	Cocoa

Notes:

The middle of this pattern can be found on page 9 and is 151 stitches across and 107 stitches down. Pattern layout using page numbers in top left.

1 2 3 4 5 6
 7 8 9 10 11 12
 13 14 15 16 17 18

Usage Summary

Strands Per Skein: 6

Skein Length: 313.0 in

Type	Number	Full	Half	Quarter	Petite	Back(in)	Str(in)	Spec(in)	French	Bead	Skein Est.
DMC 310	14858	0	0	0	0	0.0	0.0	0.0	0	0	7.000
DMC 317	235	0	0	0	0	0.0	0.0	0.0	0	0	1.000
DMC 347	799	0	0	0	0	0.0	0.0	0.0	0	0	1.000
DMC 350	386	0	0	0	0	0.0	0.0	0.0	0	0	1.000
DMC 355	1089	0	0	0	0	0.0	0.0	0.0	0	0	1.000
DMC 356	563	0	0	0	0	0.0	0.0	0.0	0	0	1.000
DMC 402	514	0	0	0	0	0.0	0.0	0.0	0	0	1.000
DMC 413	3135	0	0	0	0	0.0	0.0	0.0	0	0	2.000
DMC 436	3369	0	0	0	0	0.0	0.0	0.0	0	0	2.000
DMC 437	1555	0	0	0	0	0.0	0.0	0.0	0	0	1.000
DMC 535	1810	0	0	0	0	0.0	0.0	0.0	0	0	1.000
DMC 720	138	0	0	0	0	0.0	0.0	0.0	0	0	1.000
DMC 721	3098	0	0	0	0	0.0	0.0	0.0	0	0	2.000
DMC 722	2199	0	0	0	0	0.0	0.0	0.0	0	0	1.000
DMC 725	739	0	0	0	0	0.0	0.0	0.0	0	0	1.000
DMC 726	331	0	0	0	0	0.0	0.0	0.0	0	0	1.000
DMC 728	256	0	0	0	0	0.0	0.0	0.0	0	0	1.000
DMC 741	610	0	0	0	0	0.0	0.0	0.0	0	0	1.000
DMC 743	430	0	0	0	0	0.0	0.0	0.0	0	0	1.000
DMC 815	371	0	0	0	0	0.0	0.0	0.0	0	0	1.000
DMC 816	601	0	0	0	0	0.0	0.0	0.0	0	0	1.000
DMC 839	347	0	0	0	0	0.0	0.0	0.0	0	0	1.000
DMC 844	1758	0	0	0	0	0.0	0.0	0.0	0	0	1.000
DMC 920	367	0	0	0	0	0.0	0.0	0.0	0	0	1.000
DMC 921	1639	0	0	0	0	0.0	0.0	0.0	0	0	1.000
DMC 922	2360	0	0	0	0	0.0	0.0	0.0	0	0	2.000
DMC 938	600	0	0	0	0	0.0	0.0	0.0	0	0	1.000
DMC 970	171	0	0	0	0	0.0	0.0	0.0	0	0	1.000
DMC 977	1350	0	0	0	0	0.0	0.0	0.0	0	0	1.000
DMC 3031	166	0	0	0	0	0.0	0.0	0.0	0	0	1.000
DMC 3340	284	0	0	0	0	0.0	0.0	0.0	0	0	1.000
DMC 3371	2284	0	0	0	0	0.0	0.0	0.0	0	0	1.000
DMC 3776	908	0	0	0	0	0.0	0.0	0.0	0	0	1.000
DMC 3778	752	0	0	0	0	0.0	0.0	0.0	0	0	1.000
DMC 3787	1418	0	0	0	0	0.0	0.0	0.0	0	0	1.000
DMC 3799	6106	0	0	0	0	0.0	0.0	0.0	0	0	3.000
DMC 3827	171	0	0	0	0	0.0	0.0	0.0	0	0	1.000
DMC 3830	261	0	0	0	0	0.0	0.0	0.0	0	0	1.000
DMC 3853	653	0	0	0	0	0.0	0.0	0.0	0	0	1.000
DMC 3854	4131	0	0	0	0	0.0	0.0	0.0	0	0	2.000
DMC 3859	303	0	0	0	0	0.0	0.0	0.0	0	0	1.000
DMC 3860	185	0	0	0	0	0.0	0.0	0.0	0	0	1.000