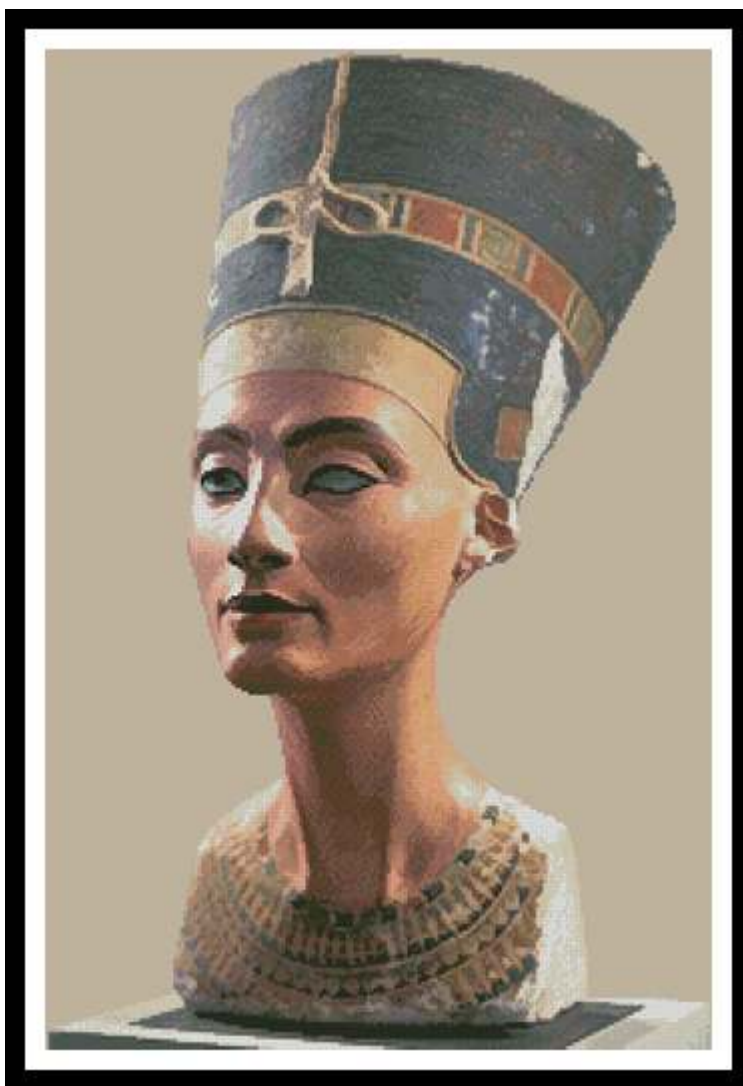


Nefertiti Bust



* Original image© Angelo Atzei. Cross Stitch Design by Tereena Clarke.

Completed Size = 195w x 295h Stitches

14 Count, 14w x 21.5h inches (36cm x 55cm)

16 Count, 12.5w x 18.5h inches (32cm x 47cm)

18 Count, 11w x 16.5h inches (28cm x 42cm)

Uses 66 DMC cotton colours. Only full cross stitches are used in this pattern. To be stitched on a fabric colour of your choice, Dirty aida is the colour displayed.

Pattern Instructions

* This pattern can be worked on any fabric type, colour or count you prefer. To work out the size of the finished article, take the number of stitches wide and high and divide it by the count of your fabric (e.g. 14,16,18 count aida etc) to get the size in inches. Times it by 2.54 to get centimetres. We have the sizes in inches shown on the previous page. Also leave at least a few inches of fabric around each side of the design to assist in framing. The higher the fabric count the smaller the completed project will be.

* To put the pattern together look in the top and bottom corners. The page numbers in brackets show which page number it joins up to. Page 1 always starts at the top left hand side of the pattern. Our pages also have a shaded grey section. This indicates a 3 row overlap from adjoining pages to assist with reading the pattern. PLEASE DO NOT RESTITCH THIS AREA.

* You should begin at the centre of the pattern. To find the centre of the pattern it is just a matter of laying the pattern out and locating the arrows at the top and left hand side of the patterns, they are determined by dividing the stitch numbers wide and high in half. Where the two points meet in the middle, that is the centre.

* If you need more assistance to find the middle of your pattern or the page layout, please see the notes section on the colour symbol chart. The easiest way to stitch this pattern, as it has multiple pages, is to stitch one page at a time.

* We suggest using two strands of floss for each stitch and one strand for backstitching if the pattern calls for it.

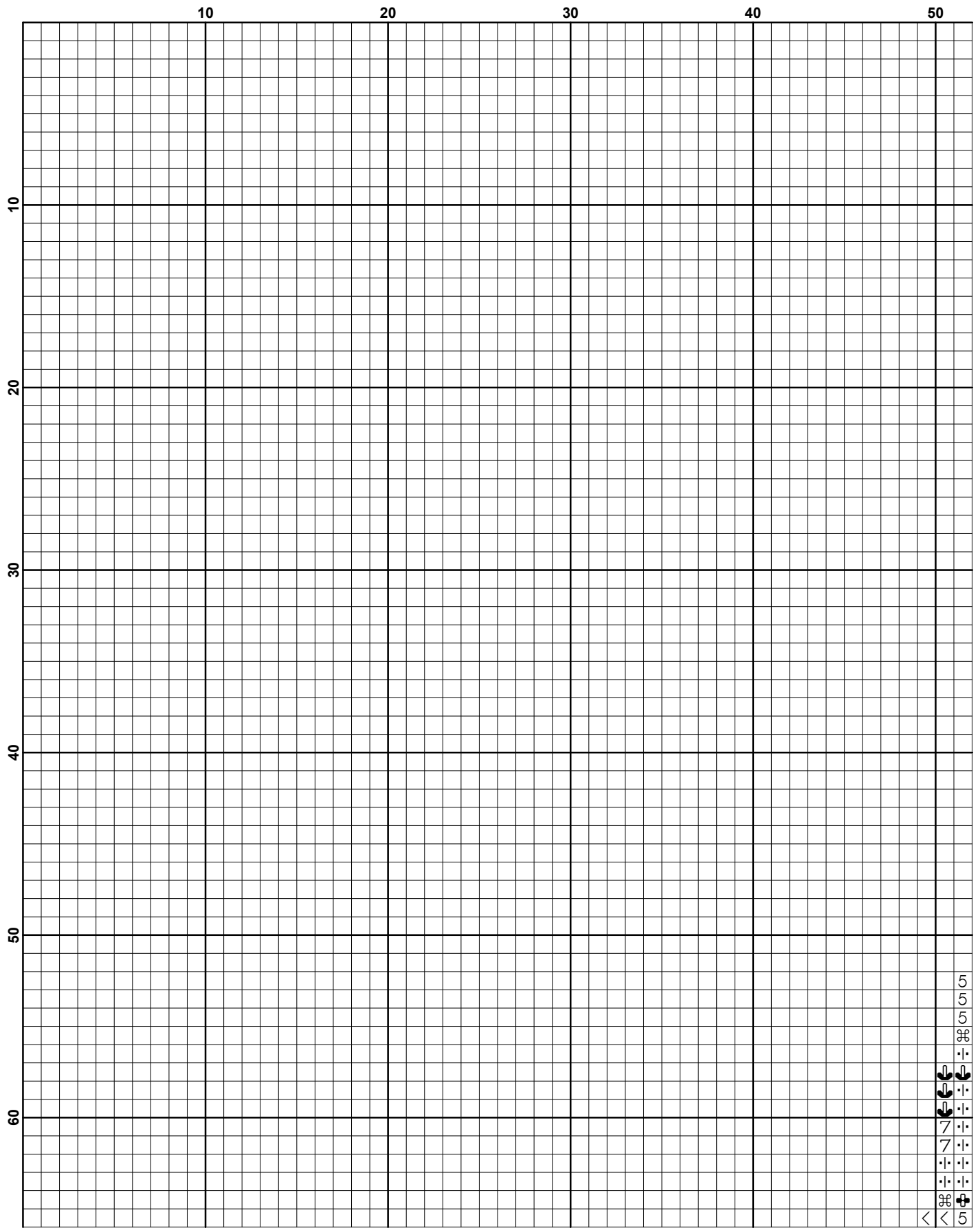
We hope you enjoy stitching our pattern.

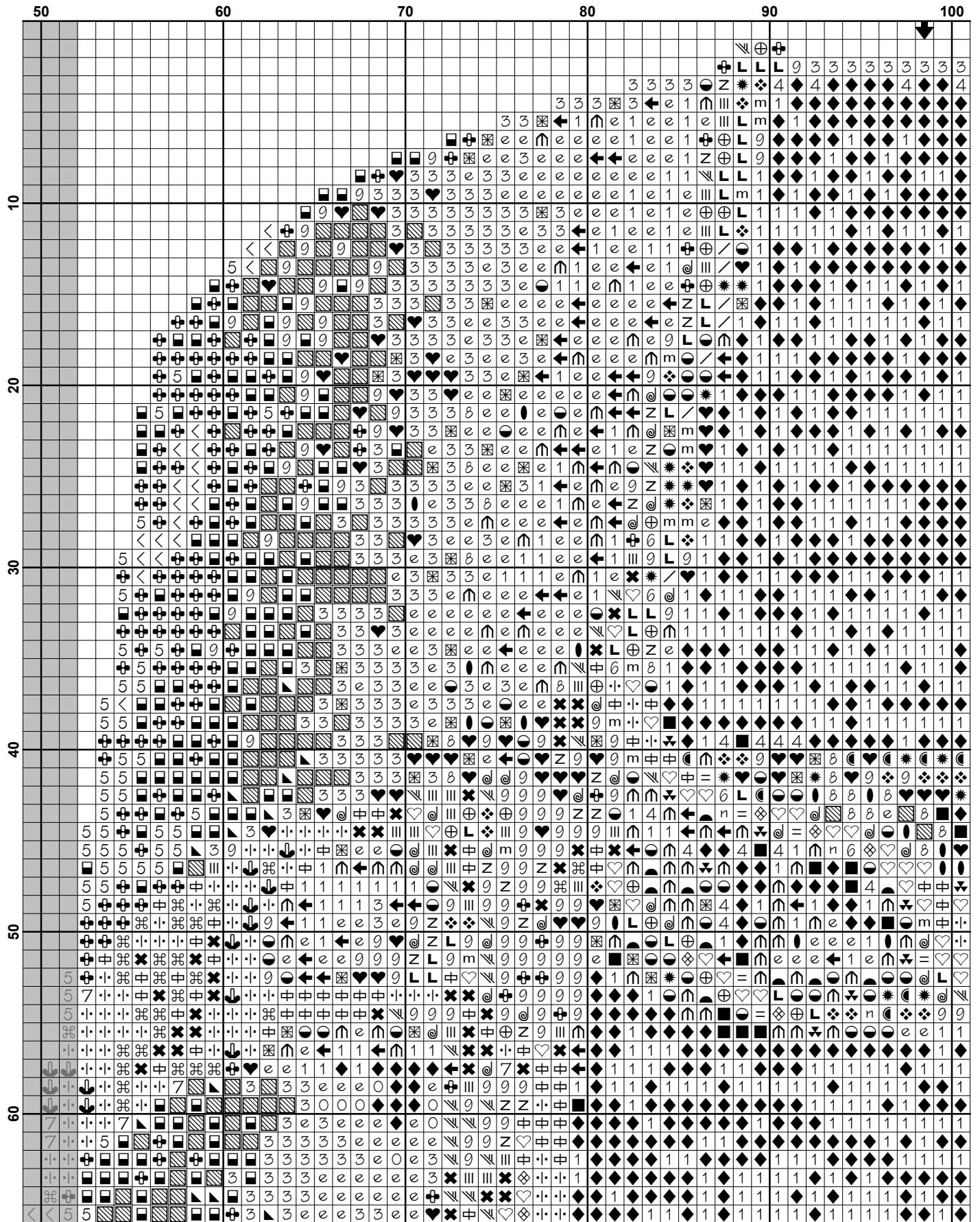
Thanks and Best Wishes
Tereena Clarke

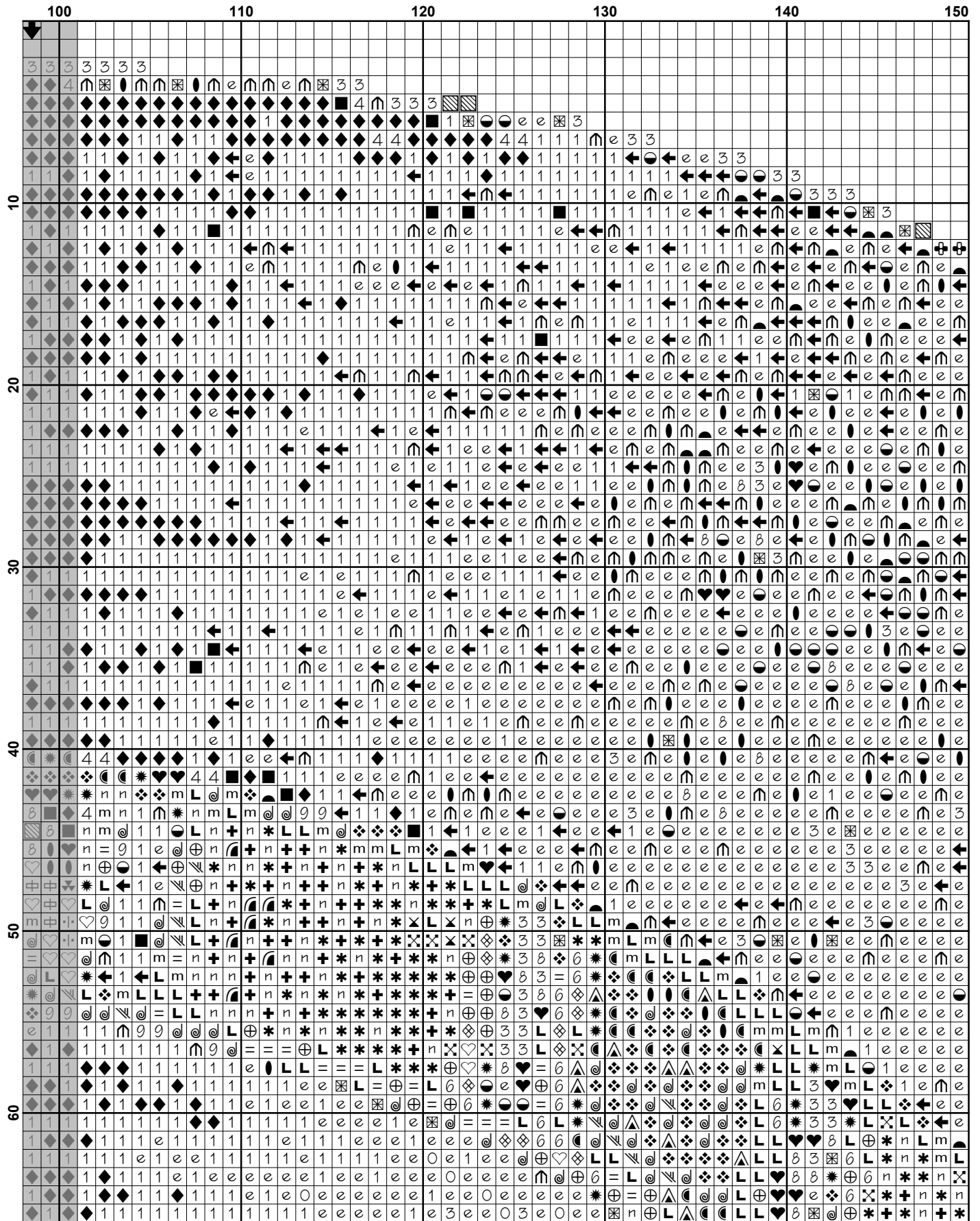
Artecy Cross Stitch
Po Box 3474
Tuggerah, NSW 2259
Australia

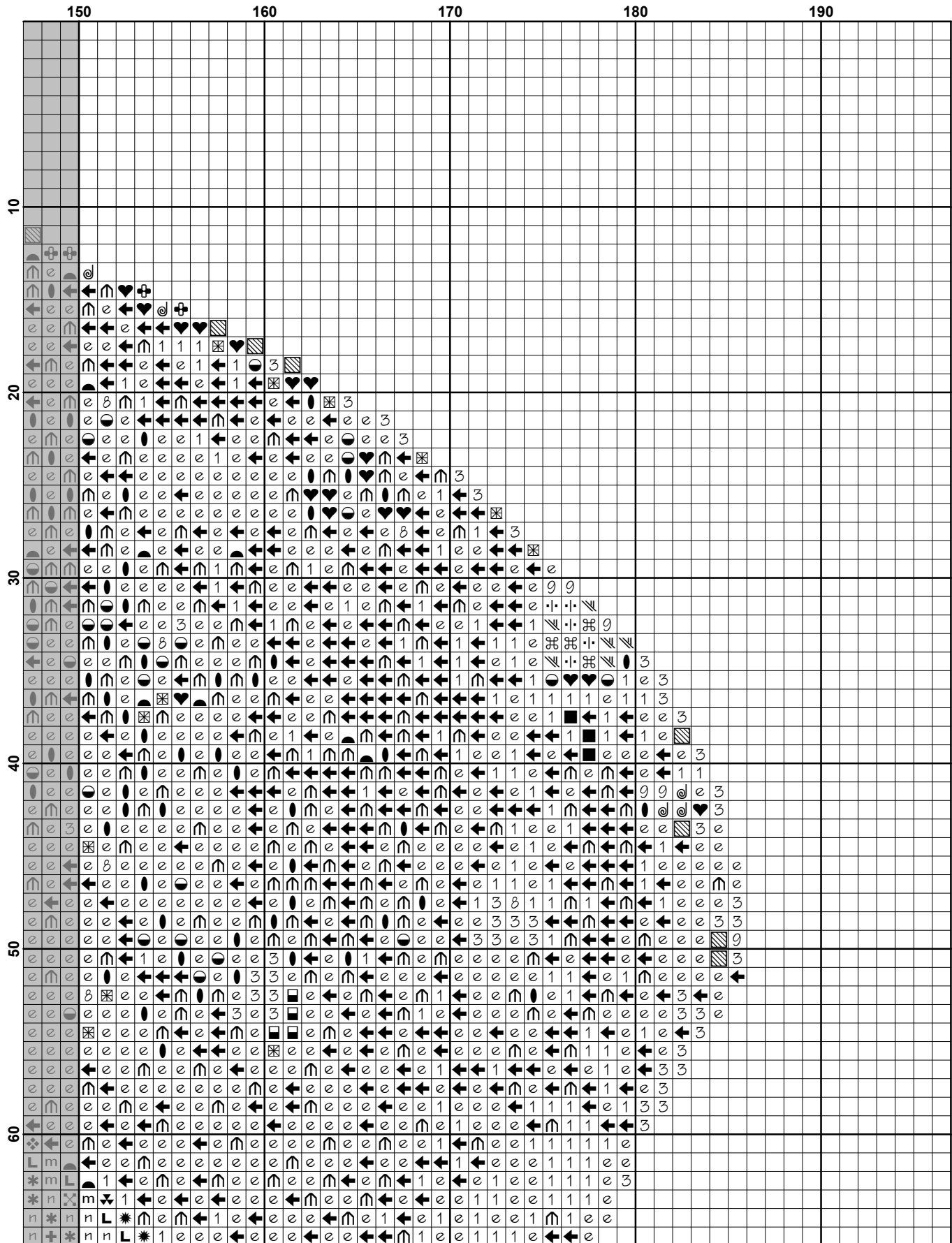
Websites: www.artecy.com and www.artecyshop.com
Email: artecy@artecy.com or stitch@artecyshop.com

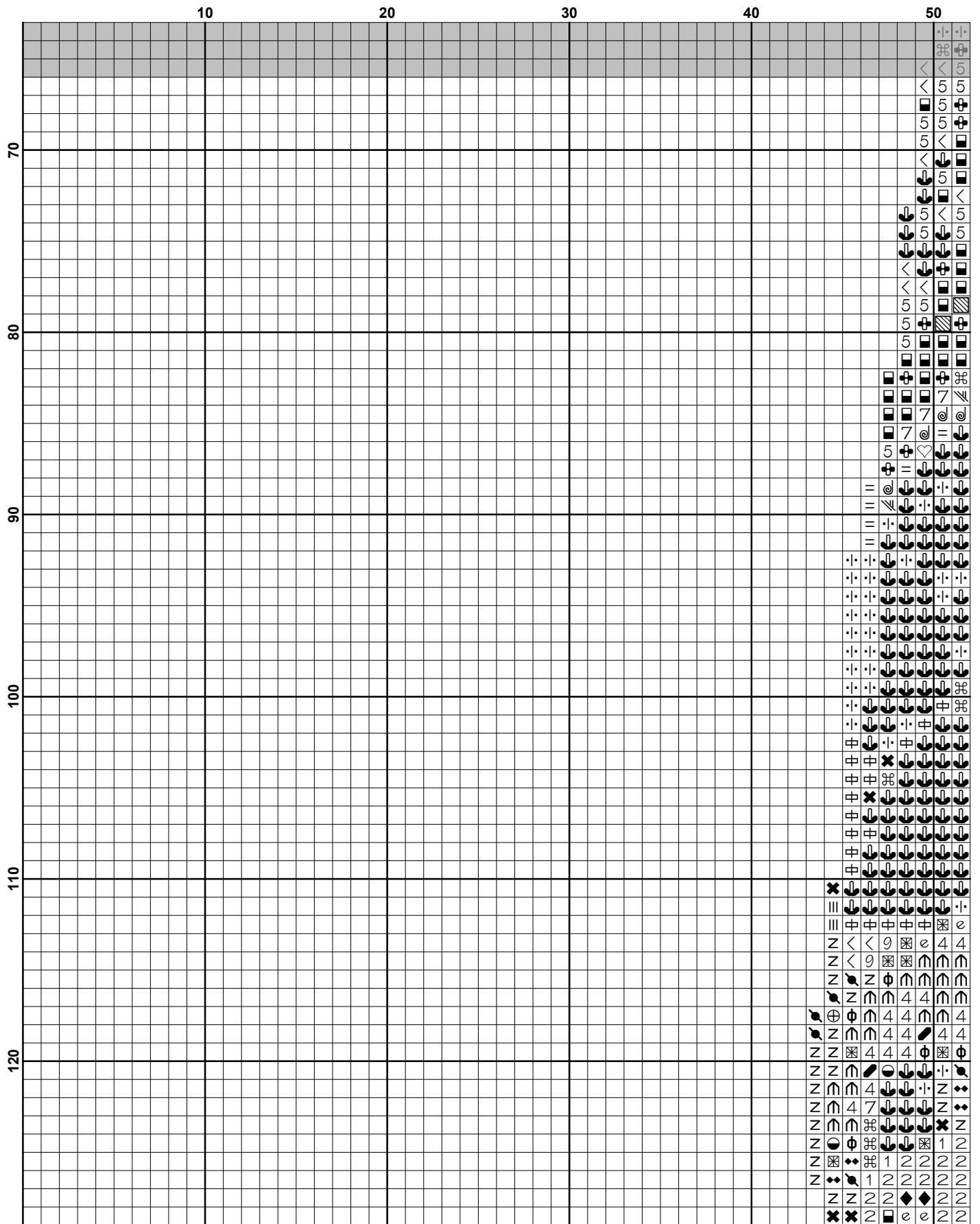
*Patterns are strictly for personal use only. It is against our copyright to make kits for sale from our designs or to sell, copy or redistribute this pattern in any form. You may not upload our patterns to any internet forums or groups or any other website. You may make 1 copy of this pattern for a working copy for your own personal use if needed.

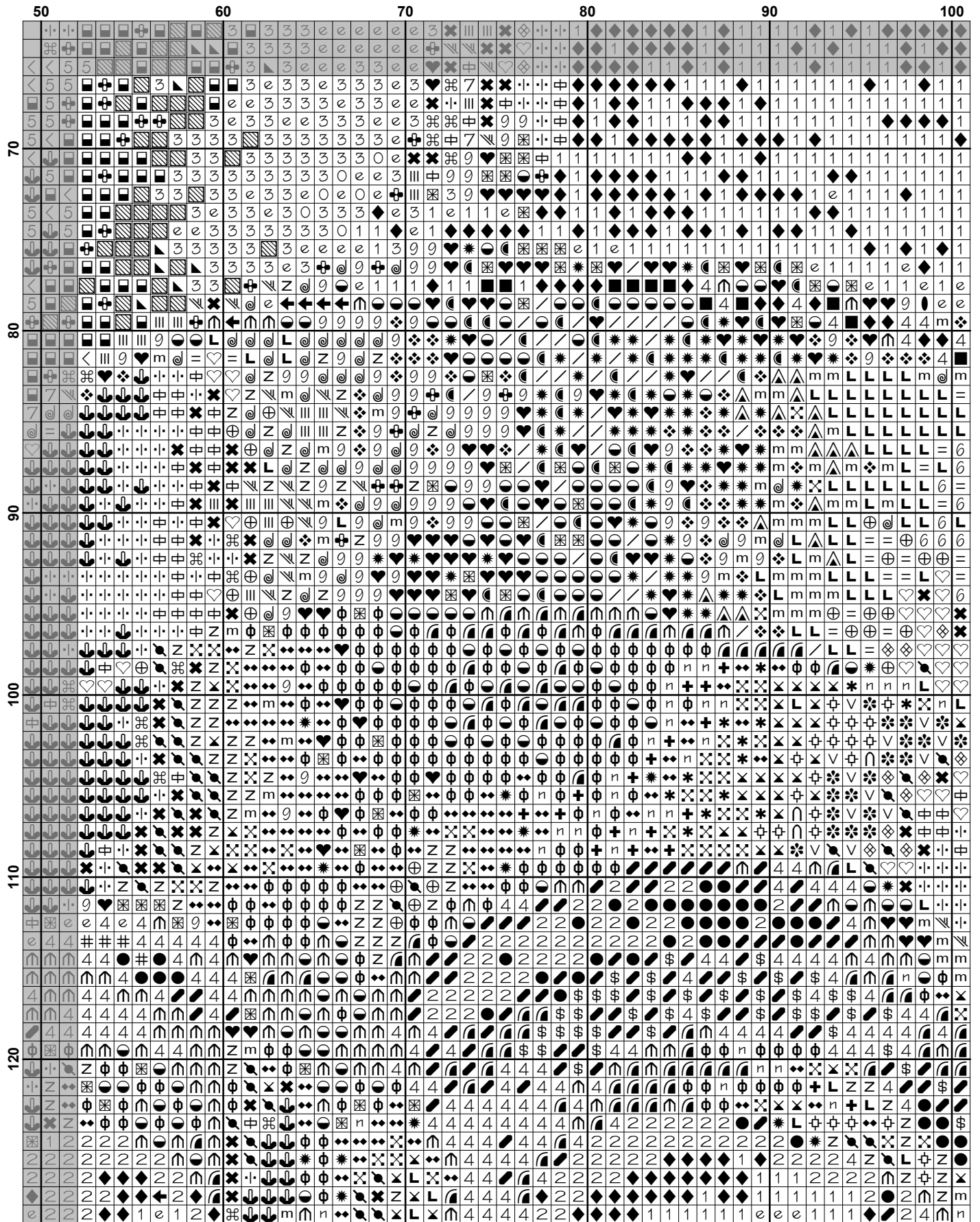


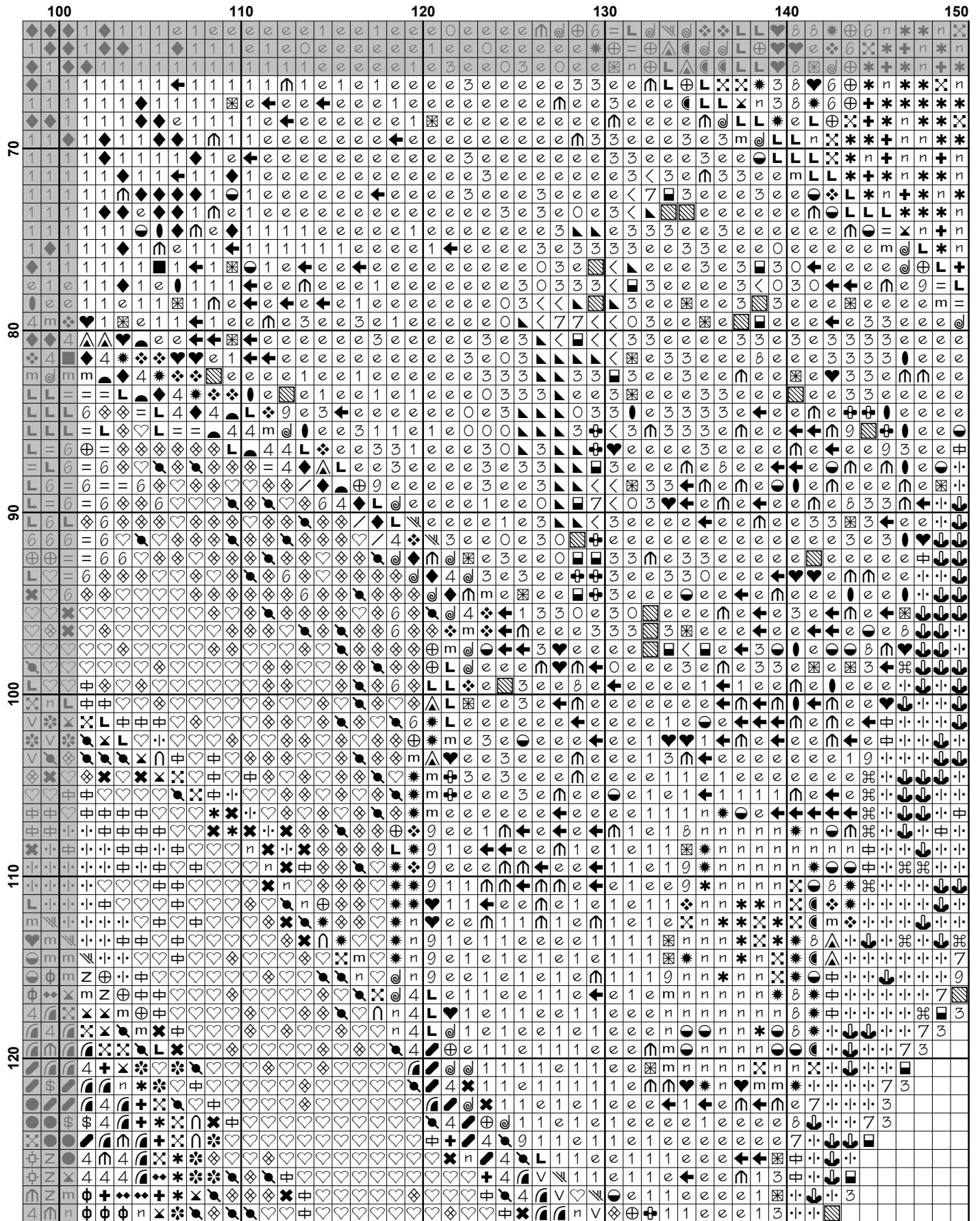


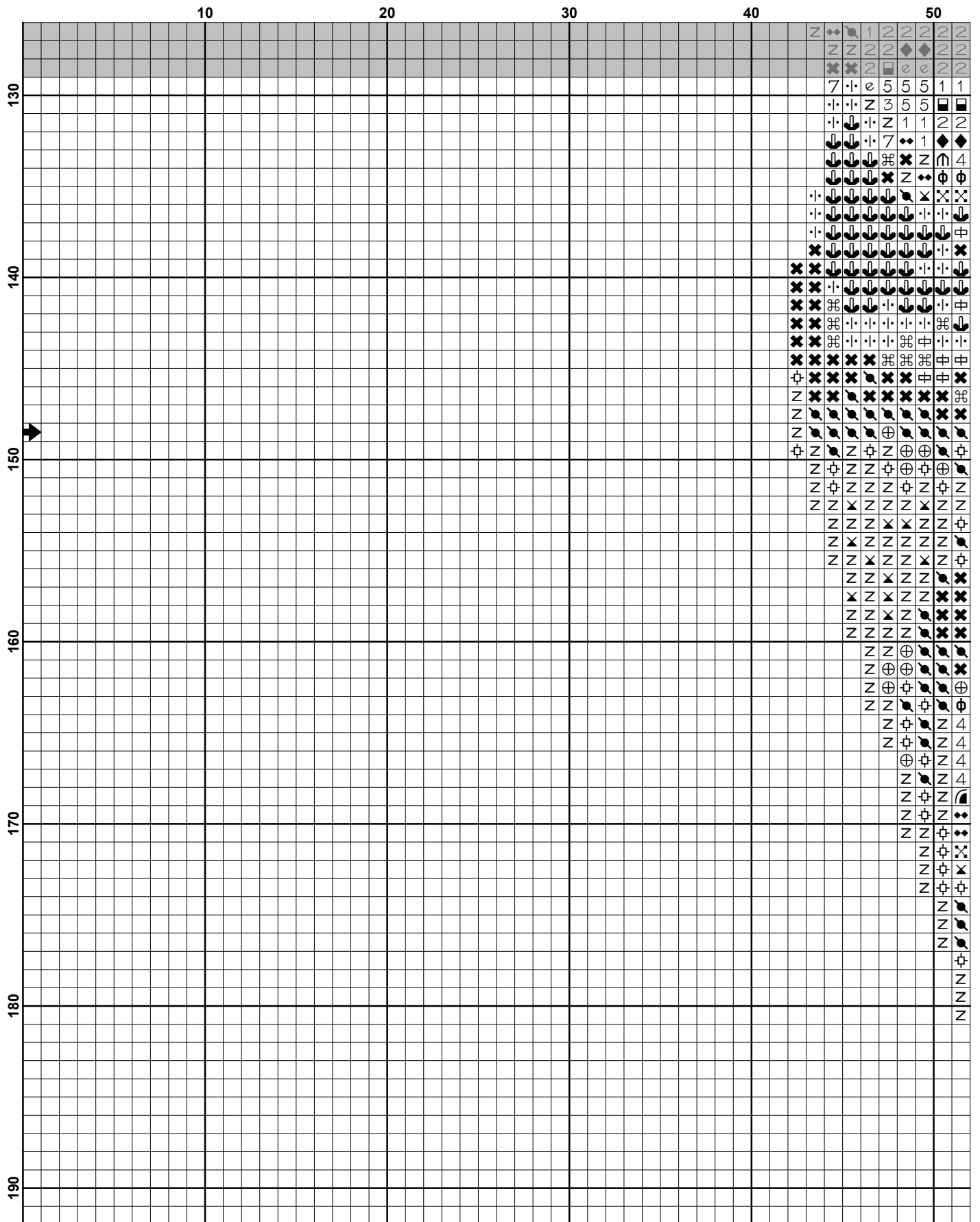


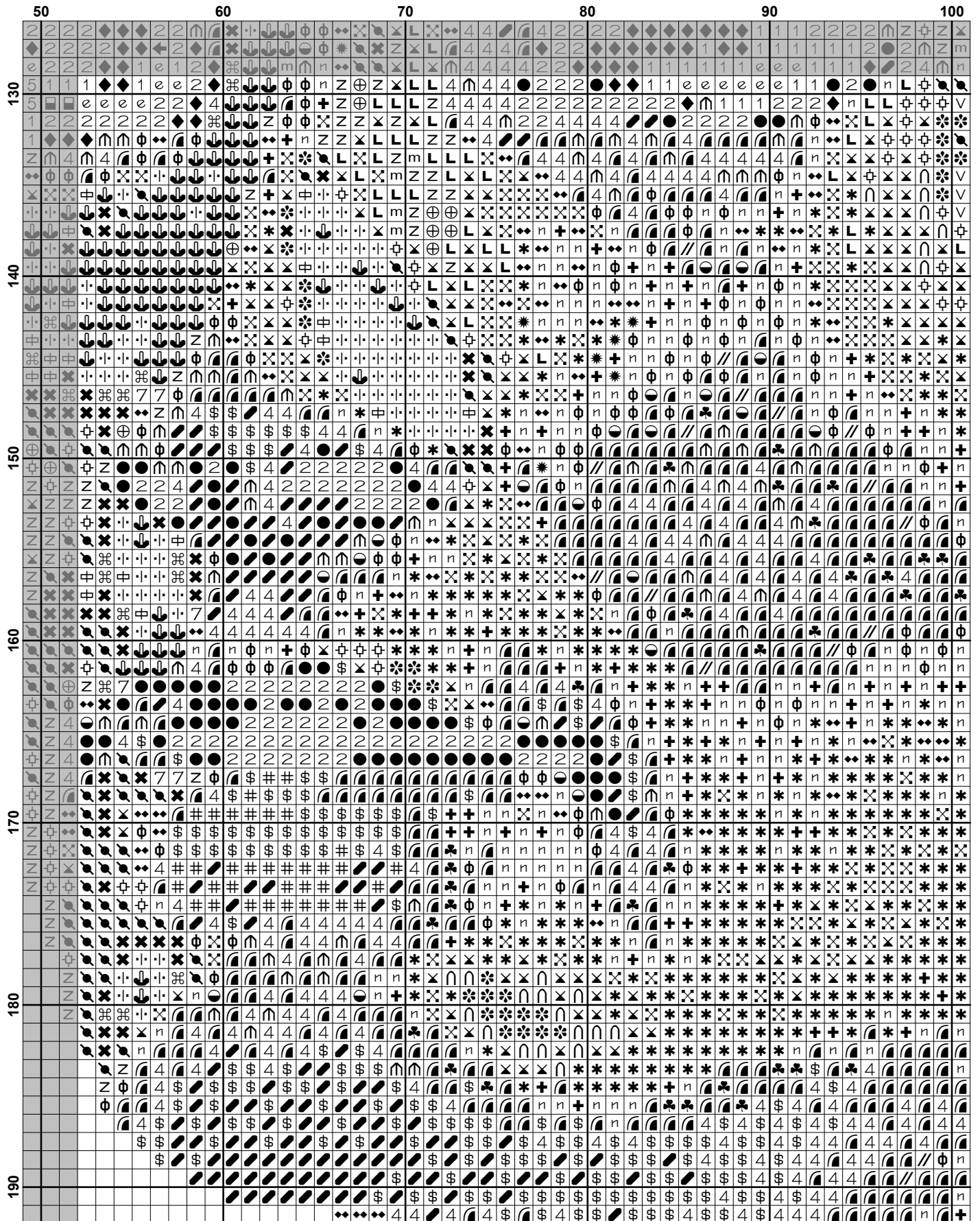


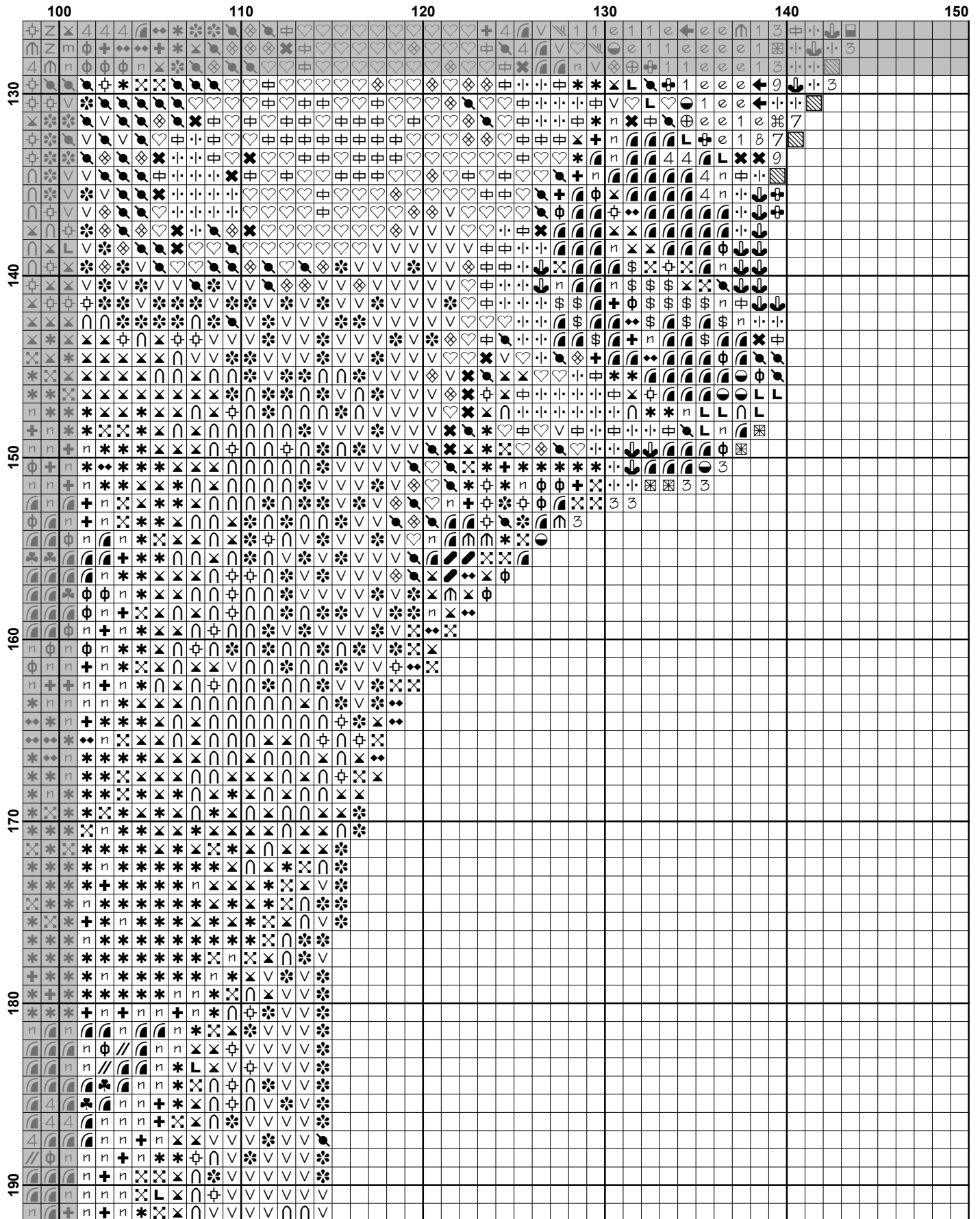


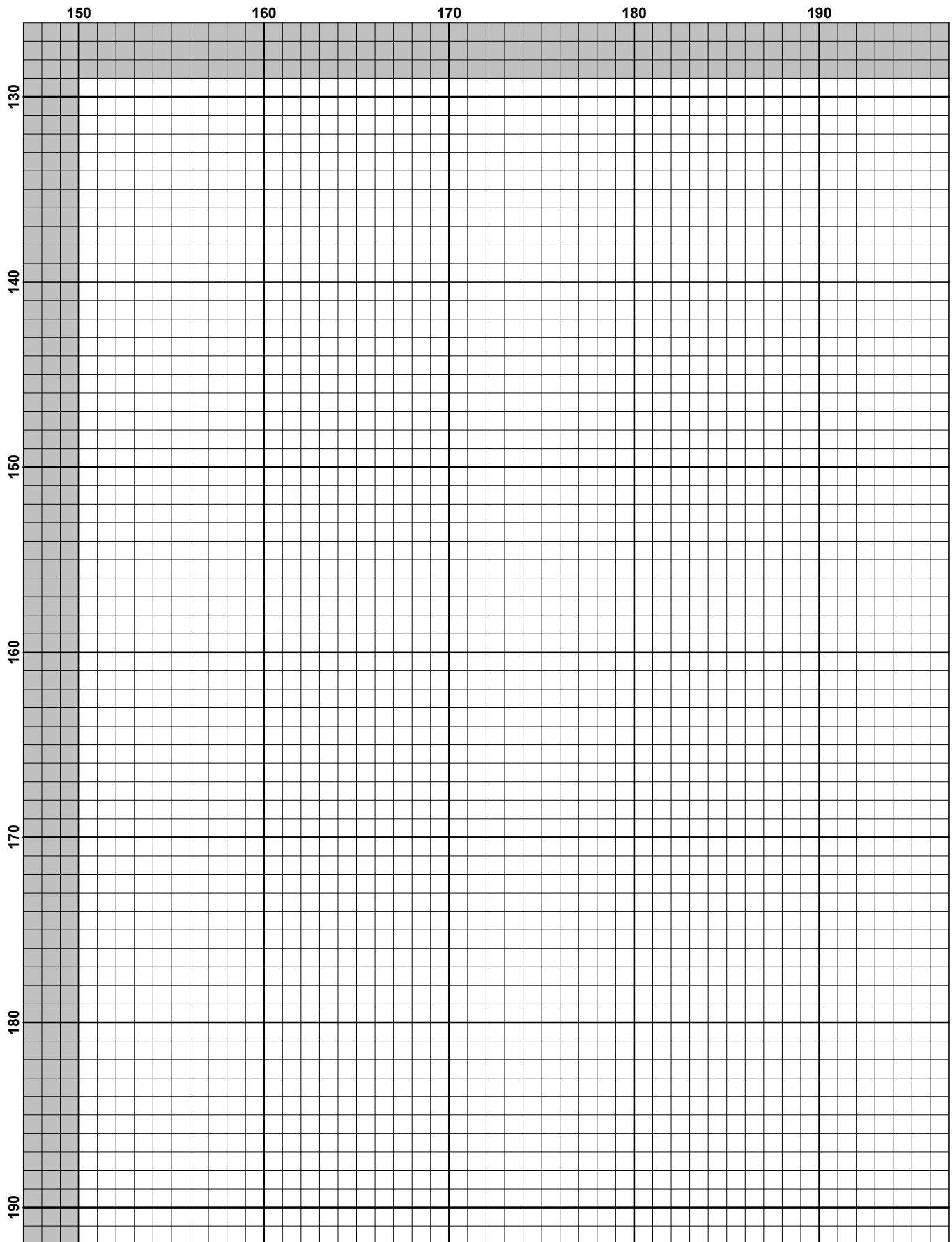


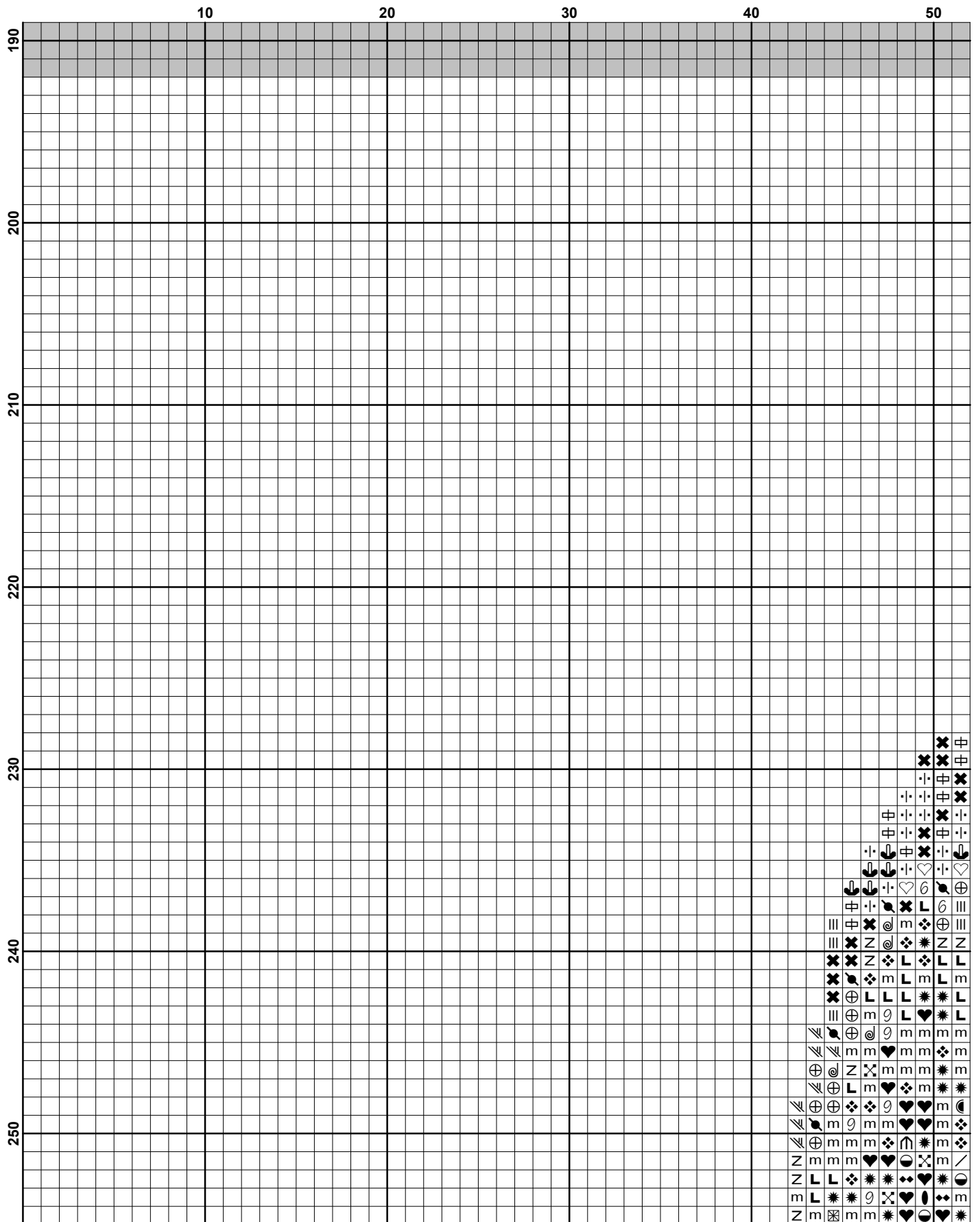


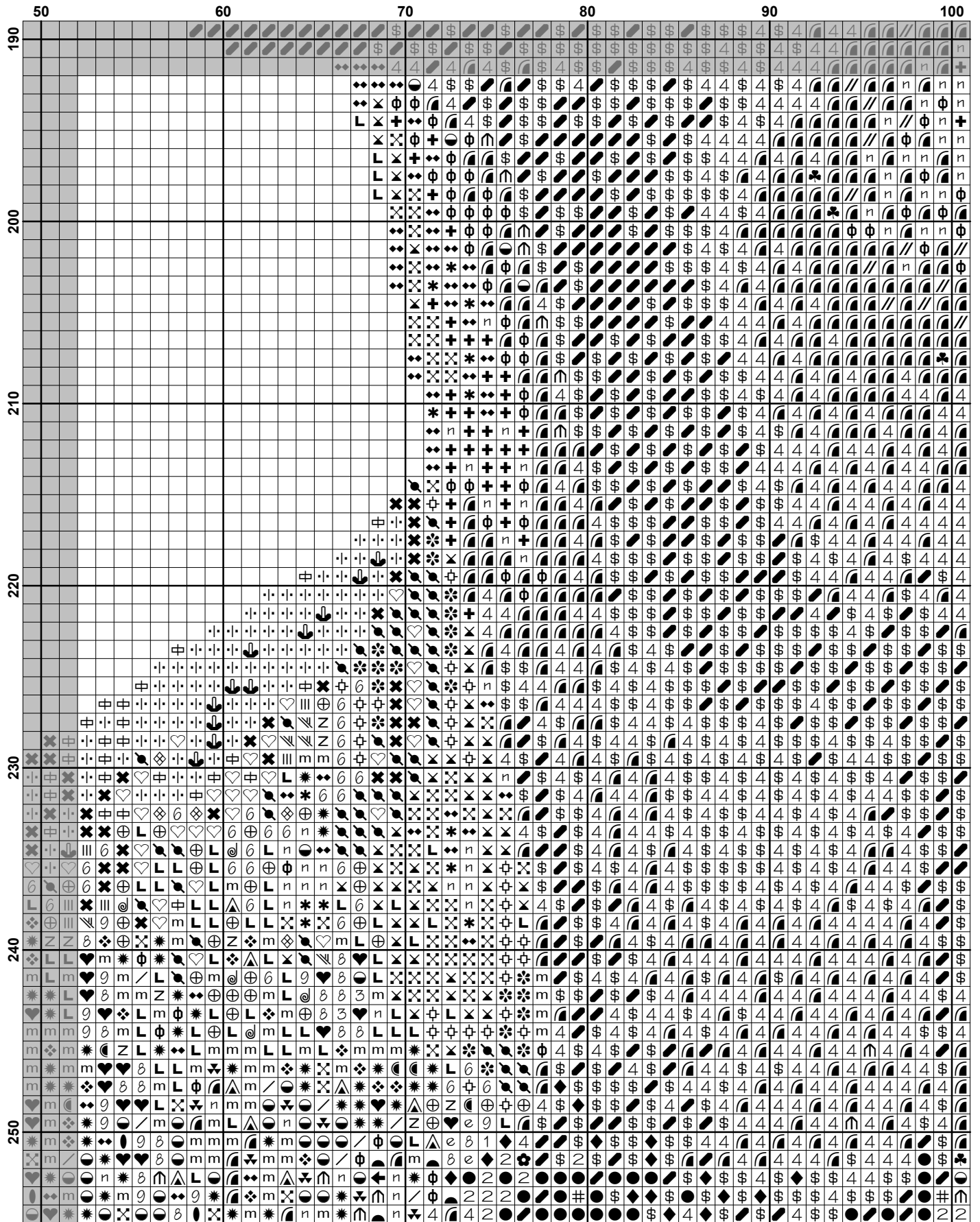


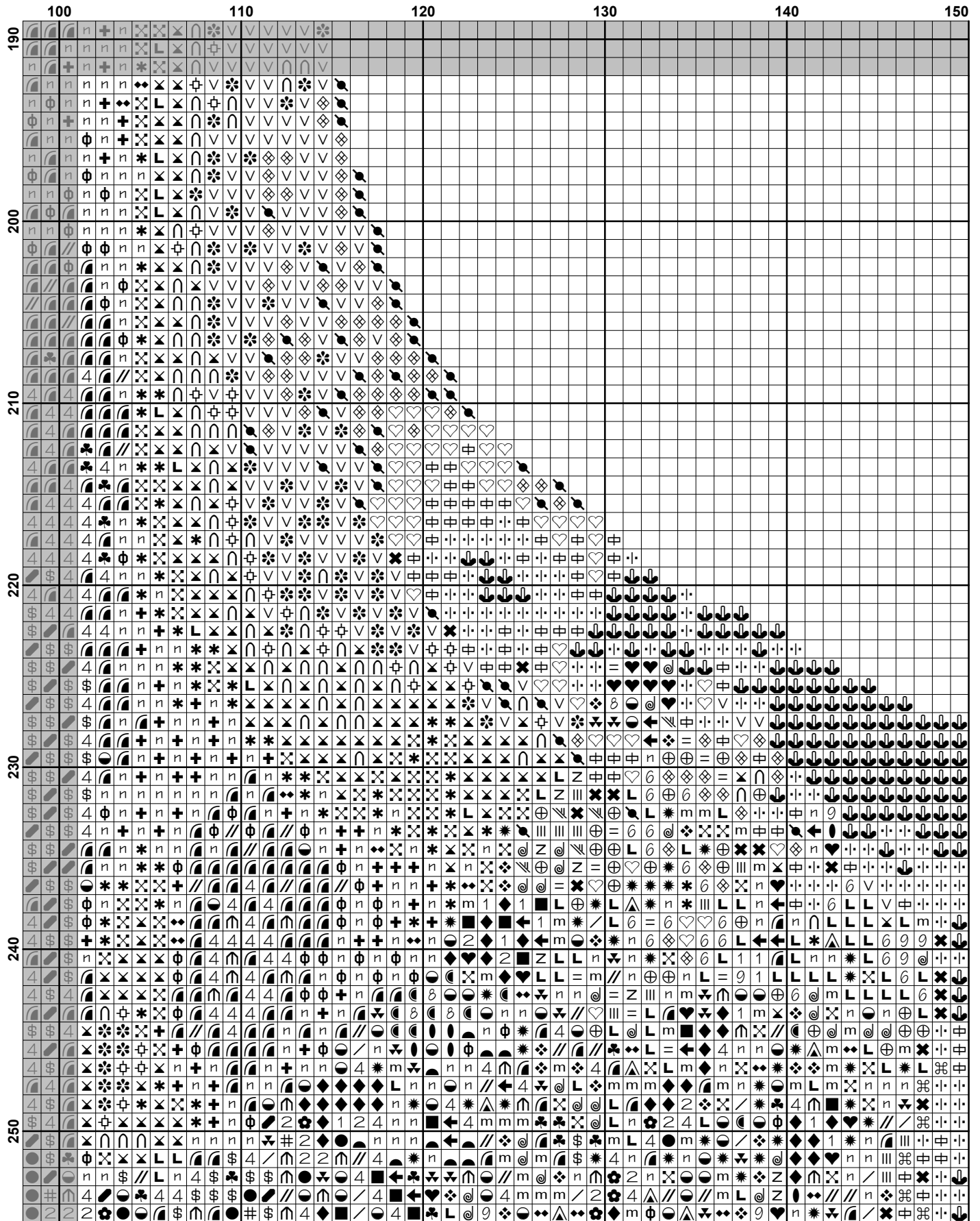


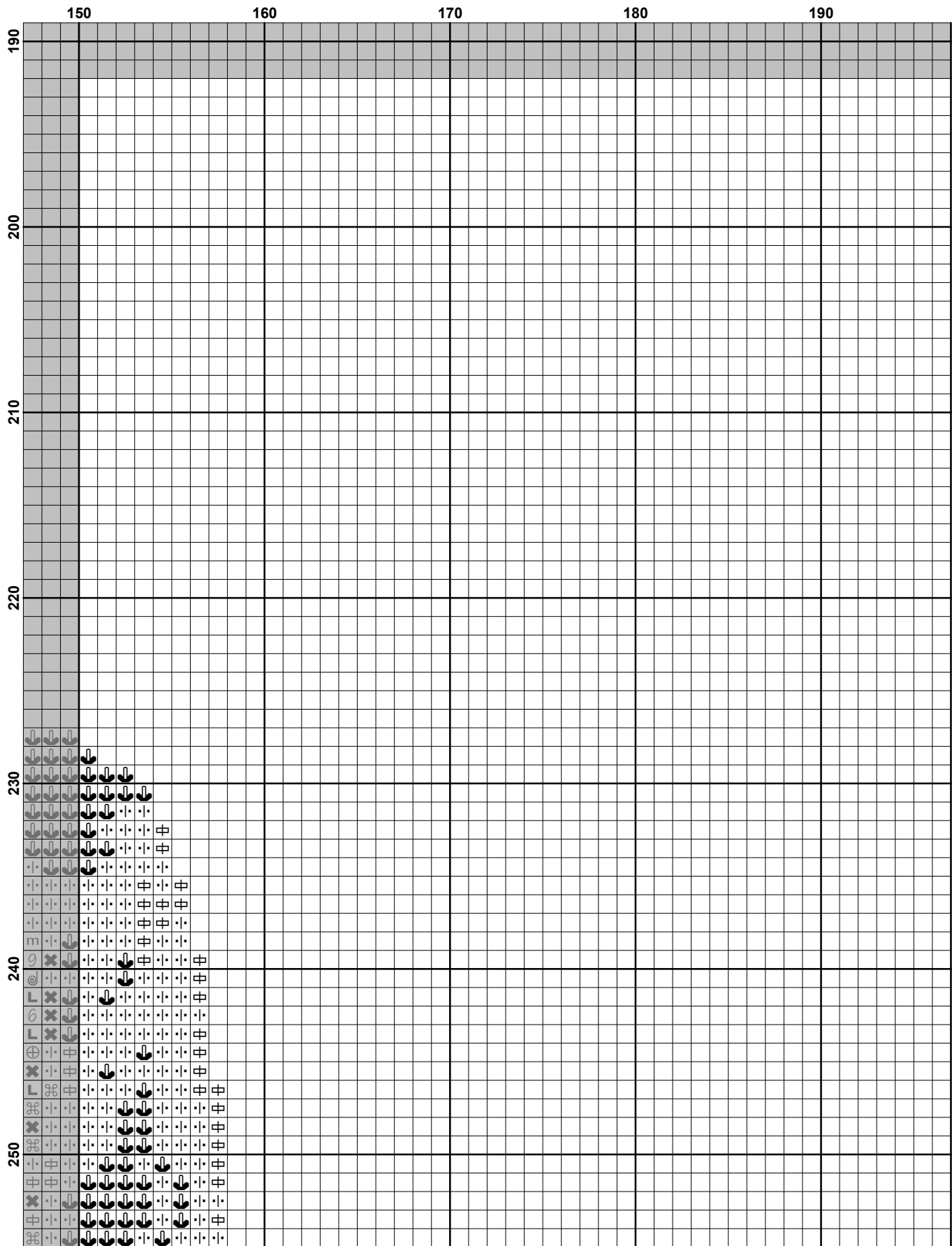


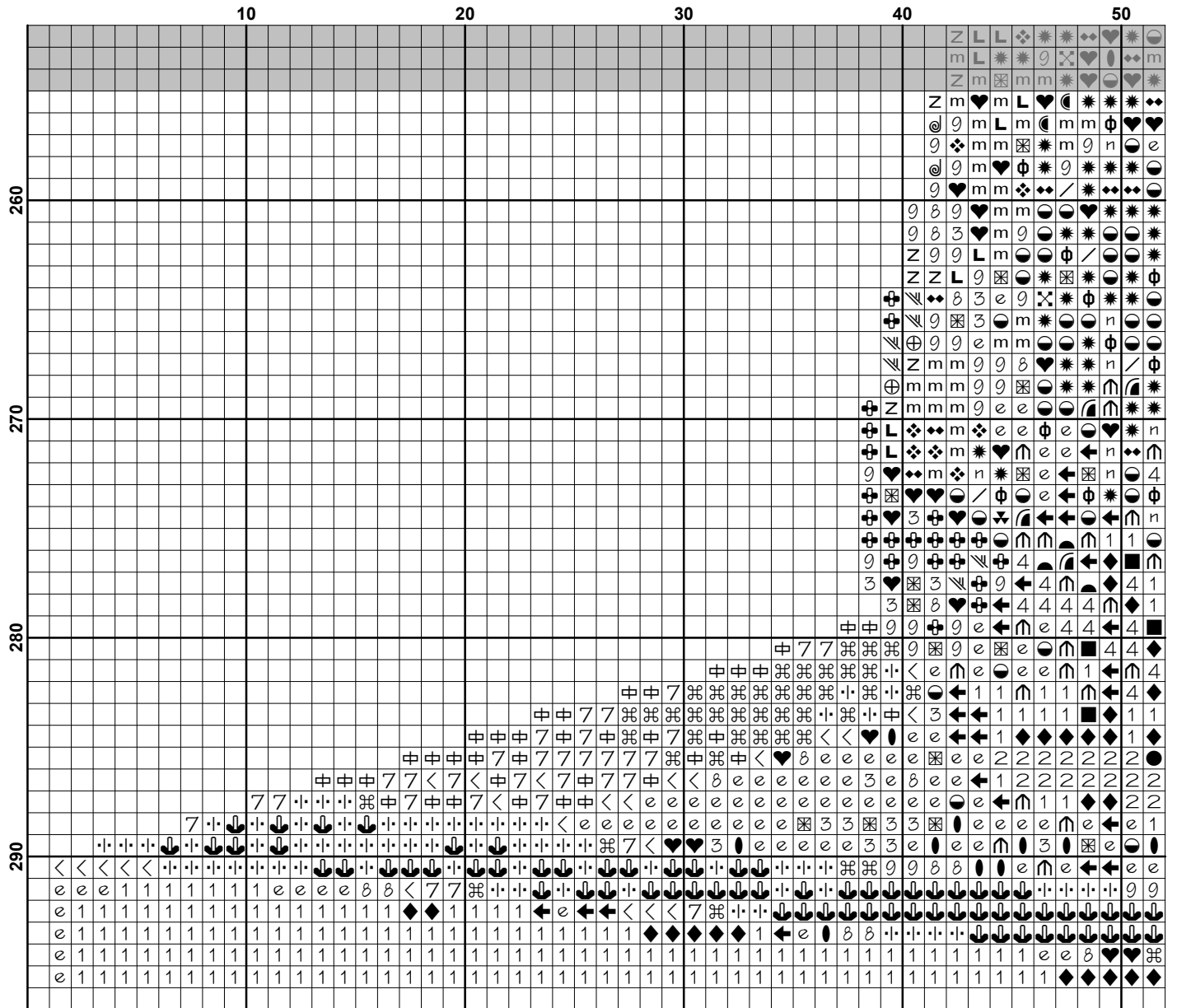


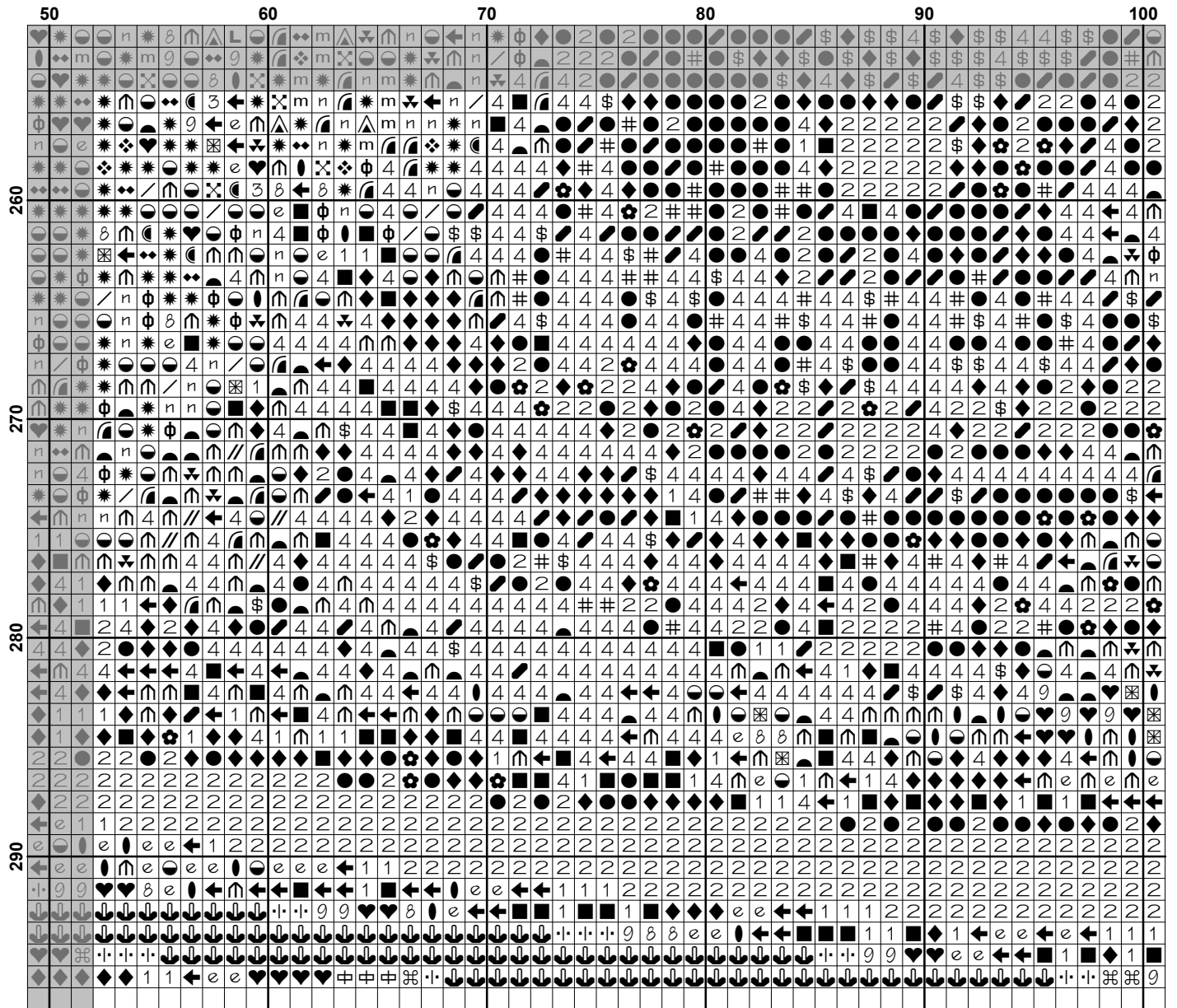


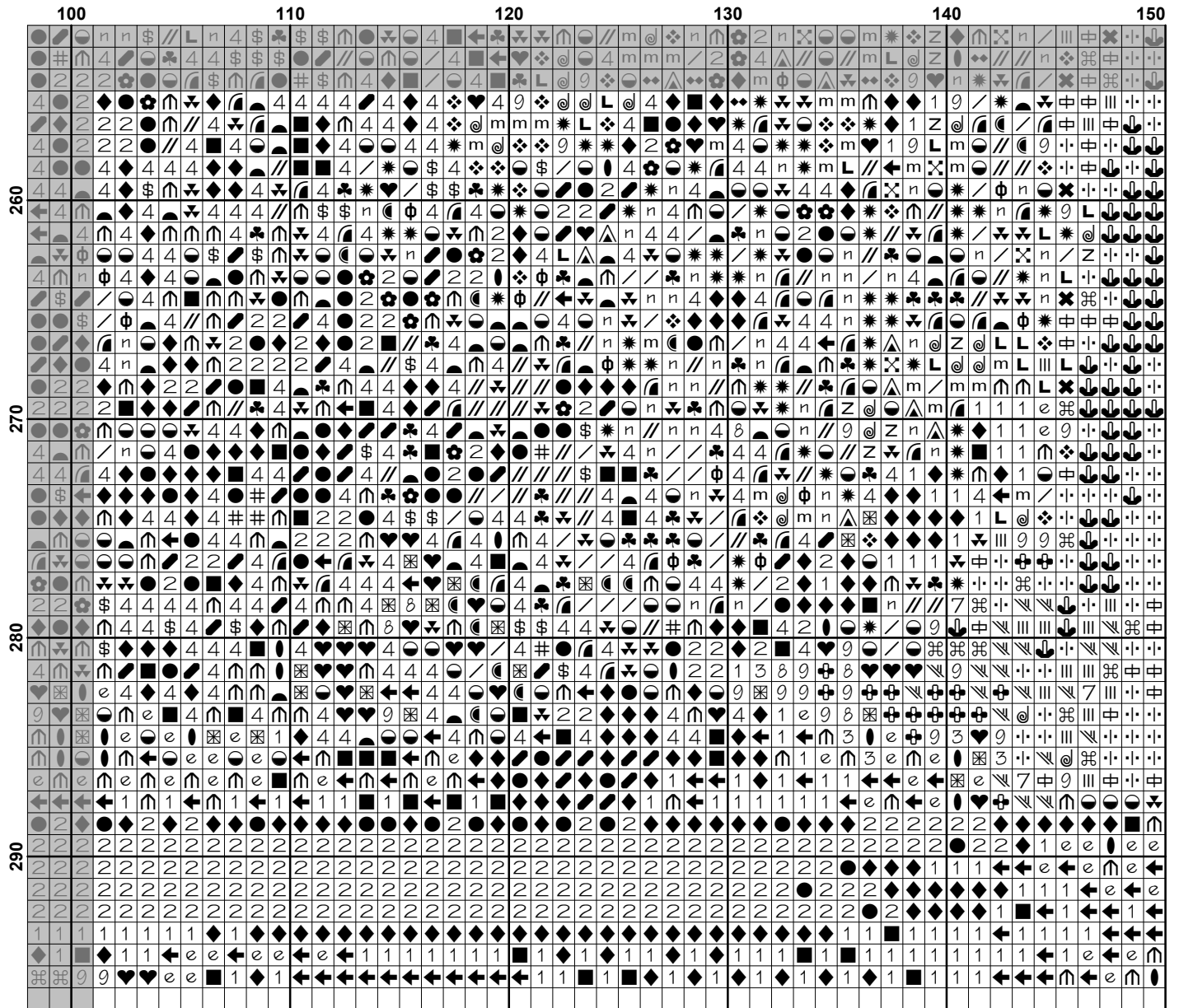









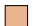

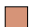



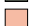
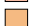




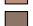




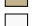





Pattern Name: Nefertiti Bust
Designed By: Image by Angelo Atzei Wikipedia
Company: Artecy Cross Stitch
Copyright: Copyright Artecy Cross Stitch. All rights Reserved.
Fabric: Aida 14, Dirty
 195w X 295h Stitches
Size(s): 14 Count, 13-7/8w X 21h in
 16 Count, 12-1/8w X 18-3/8h in
 18 Count, 10-3/4w X 16-3/8h in

Floss Used for Full Stitches:

Symbol	Strands	Type	Number	Color
	2	DMC	152	Shell Pink-MD LT
	2	DMC	160	Gray Blue-MD
	2	DMC	161	Gray Blue
	2	DMC	169	Pewter-LT
	2	DMC	223	Shell Pink-LT
	2	DMC	310	Black
	2	DMC	317	Pewter Gray
	2	DMC	318	Steel Gray-LT
	2	DMC	352	Coral-LT
	2	DMC	353	Peach
	2	DMC	356	Terra Cotta-MD
	2	DMC	402	Mahogany-VY LT
	2	DMC	407	Desert Sand-DK
	2	DMC	413	Pewter Gray-DK
	2	DMC	414	Steel Gray-DK
	2	DMC	415	Pearl Gray
	2	DMC	451	Shell Gray-DK
< symbol"/>	2	DMC	453	Shell Gray-LT
	2	DMC	535	Ash Gray-VY LT
	2	DMC	612	Drab Brown-LT
	2	DMC	632	Desert Sand-UL VY DK
	2	DMC	640	Beige Gray-VY DK
	2	DMC	645	Beaver Gray-VY DK
	2	DMC	646	Beaver Gray-DK
	2	DMC	738	Tan-VY LT
	2	DMC	758	Terra Cotta-VY LT
	2	DMC	779	Cocoa-DK
	2	DMC	840	Beige Brown-MD
	2	DMC	841	Beige Brown-LT
	2	DMC	842	Beige Brown-VY LT
	2	DMC	844	Beaver Brown-UL DK
	2	DMC	934	Black Avocado Green
	2	DMC	938	Coffee Brown-UL DK
	2	DMC	945	Tawny
	2	DMC	948	Peach-VY LT
	2	DMC	950	Desert Sand-LT
	2	DMC	951	Tawny-LT
	2	DMC	3031	Mocha Brown-VY DK
	2	DMC	3041	Antique Violet-MD
	2	DMC	3042	Antique Violet-LT
	2	DMC	3064	Desert Sand
	2	DMC	3341	Apricot
	2	DMC	3371	Black Brown
	2	DMC	3722	Shell Pink-MD
	2	DMC	3726	Antique Mauve-DK
	2	DMC	3740	Antique Violet-DK

Symbol	Strands	Type	Number	Color
	2	DMC	3770	Tawny-VY LT
	2	DMC	3771	Terra Cotta-UL VY LT
	2	DMC	3772	Desert Sand-VY DK
	2	DMC	3778	Terra Cotta-LT
	2	DMC	3787	Brown Gray-DK
	2	DMC	3790	Beige Gray-UL DK
	2	DMC	3799	Pewter Gray-VY DK
	2	DMC	3824	Apricot-LT
	2	DMC	3825	Pumpkin-Pale
	2	DMC	3856	Mahogany-UL VY LT
	2	DMC	3857	Rosewood-DK
	2	DMC	3858	Rosewood-MD
	2	DMC	3859	Rosewood-LT
	2	DMC	3860	Cocoa
	2	DMC	3861	Cocoa-LT
	2	DMC	3862	Mocha Beige-DK
	2	DMC	3863	Mocha Beige-MD
	2	DMC	3864	Mocha Beige-LT
	2	DMC	3865	Winter White
	2	DMC	3866	Mocha Brown-UL VY LT

Notes:

The middle of this pattern can be found on page 10 and is 99 stitches across and 149 stitches down.

Pattern layout using page numbers in top left.

```

1  2  3  4
5  6  7  8
9 10 11 12
13 14 15 16
17 18 19 20

```


Usage Summary

Strands Per Skein: 6

Skein Length: 313.0 in

Type	Number	Full	Half	Quarter	Petite	Back(in)	Str(in)	Spec(in)	French	Bead	Skein Est.
DMC 152	152	273	0	0	0	0.0	0.0	0.0	0	0	1.000
DMC 160	160	49	0	0	0	0.0	0.0	0.0	0	0	1.000
DMC 161	161	46	0	0	0	0.0	0.0	0.0	0	0	1.000
DMC 169	169	223	0	0	0	0.0	0.0	0.0	0	0	1.000
DMC 223	223	290	0	0	0	0.0	0.0	0.0	0	0	1.000
DMC 310	310	760	0	0	0	0.0	0.0	0.0	0	0	1.000
DMC 317	317	2808	0	0	0	0.0	0.0	0.0	0	0	2.000
DMC 318	318	237	0	0	0	0.0	0.0	0.0	0	0	1.000
DMC 352	352	185	0	0	0	0.0	0.0	0.0	0	0	1.000
DMC 353	353	295	0	0	0	0.0	0.0	0.0	0	0	1.000
DMC 356	356	684	0	0	0	0.0	0.0	0.0	0	0	1.000
DMC 402	402	253	0	0	0	0.0	0.0	0.0	0	0	1.000
DMC 407	407	327	0	0	0	0.0	0.0	0.0	0	0	1.000
DMC 413	413	2136	0	0	0	0.0	0.0	0.0	0	0	1.000
DMC 414	414	661	0	0	0	0.0	0.0	0.0	0	0	1.000
DMC 415	415	66	0	0	0	0.0	0.0	0.0	0	0	1.000
DMC 451	451	357	0	0	0	0.0	0.0	0.0	0	0	1.000
DMC 453	453	192	0	0	0	0.0	0.0	0.0	0	0	1.000
DMC 535	535	996	0	0	0	0.0	0.0	0.0	0	0	1.000
DMC 612	612	67	0	0	0	0.0	0.0	0.0	0	0	1.000
DMC 632	632	90	0	0	0	0.0	0.0	0.0	0	0	1.000
DMC 640	640	139	0	0	0	0.0	0.0	0.0	0	0	1.000
DMC 645	645	225	0	0	0	0.0	0.0	0.0	0	0	1.000
DMC 646	646	139	0	0	0	0.0	0.0	0.0	0	0	1.000
DMC 738	738	87	0	0	0	0.0	0.0	0.0	0	0	1.000
DMC 758	758	190	0	0	0	0.0	0.0	0.0	0	0	1.000
DMC 779	779	1458	0	0	0	0.0	0.0	0.0	0	0	1.000
DMC 840	840	131	0	0	0	0.0	0.0	0.0	0	0	1.000
DMC 841	841	245	0	0	0	0.0	0.0	0.0	0	0	1.000
DMC 842	842	113	0	0	0	0.0	0.0	0.0	0	0	1.000
DMC 844	844	180	0	0	0	0.0	0.0	0.0	0	0	1.000
DMC 934	934	47	0	0	0	0.0	0.0	0.0	0	0	1.000
DMC 938	938	93	0	0	0	0.0	0.0	0.0	0	0	1.000
DMC 945	945	597	0	0	0	0.0	0.0	0.0	0	0	1.000
DMC 948	948	199	0	0	0	0.0	0.0	0.0	0	0	1.000
DMC 950	950	89	0	0	0	0.0	0.0	0.0	0	0	1.000
DMC 951	951	505	0	0	0	0.0	0.0	0.0	0	0	1.000
DMC 3031	3031	641	0	0	0	0.0	0.0	0.0	0	0	1.000
DMC 3041	3041	223	0	0	0	0.0	0.0	0.0	0	0	1.000
DMC 3042	3042	231	0	0	0	0.0	0.0	0.0	0	0	1.000
DMC 3064	3064	492	0	0	0	0.0	0.0	0.0	0	0	1.000
DMC 3341	3341	269	0	0	0	0.0	0.0	0.0	0	0	1.000
DMC 3371	3371	427	0	0	0	0.0	0.0	0.0	0	0	1.000
DMC 3722	3722	306	0	0	0	0.0	0.0	0.0	0	0	1.000
DMC 3726	3726	488	0	0	0	0.0	0.0	0.0	0	0	1.000
DMC 3740	3740	1058	0	0	0	0.0	0.0	0.0	0	0	1.000
DMC 3770	3770	1199	0	0	0	0.0	0.0	0.0	0	0	1.000
DMC 3771	3771	112	0	0	0	0.0	0.0	0.0	0	0	1.000
DMC 3772	3772	889	0	0	0	0.0	0.0	0.0	0	0	1.000
DMC 3778	3778	588	0	0	0	0.0	0.0	0.0	0	0	1.000
DMC 3787	3787	161	0	0	0	0.0	0.0	0.0	0	0	1.000
DMC 3790	3790	120	0	0	0	0.0	0.0	0.0	0	0	1.000

Type	Number	Full	Half	Quarter	Petite	Back(in)	Str(in)	Spec(in)	French	Bead	Skein	Est.
■ DMC	3799	1307	0	0	0	0.0	0.0	0.0	0	0	1.000	
■ DMC	3824	385	0	0	0	0.0	0.0	0.0	0	0	1.000	
■ DMC	3825	365	0	0	0	0.0	0.0	0.0	0	0	1.000	
■ DMC	3856	340	0	0	0	0.0	0.0	0.0	0	0	1.000	
■ DMC	3857	791	0	0	0	0.0	0.0	0.0	0	0	1.000	
■ DMC	3858	1267	0	0	0	0.0	0.0	0.0	0	0	1.000	
■ DMC	3859	444	0	0	0	0.0	0.0	0.0	0	0	1.000	
■ DMC	3860	667	0	0	0	0.0	0.0	0.0	0	0	1.000	
■ DMC	3861	353	0	0	0	0.0	0.0	0.0	0	0	1.000	
■ DMC	3862	109	0	0	0	0.0	0.0	0.0	0	0	1.000	
■ DMC	3863	428	0	0	0	0.0	0.0	0.0	0	0	1.000	
■ DMC	3864	222	0	0	0	0.0	0.0	0.0	0	0	1.000	
□ DMC	3865	1067	0	0	0	0.0	0.0	0.0	0	0	1.000	
□ DMC	3866	203	0	0	0	0.0	0.0	0.0	0	0	1.000	