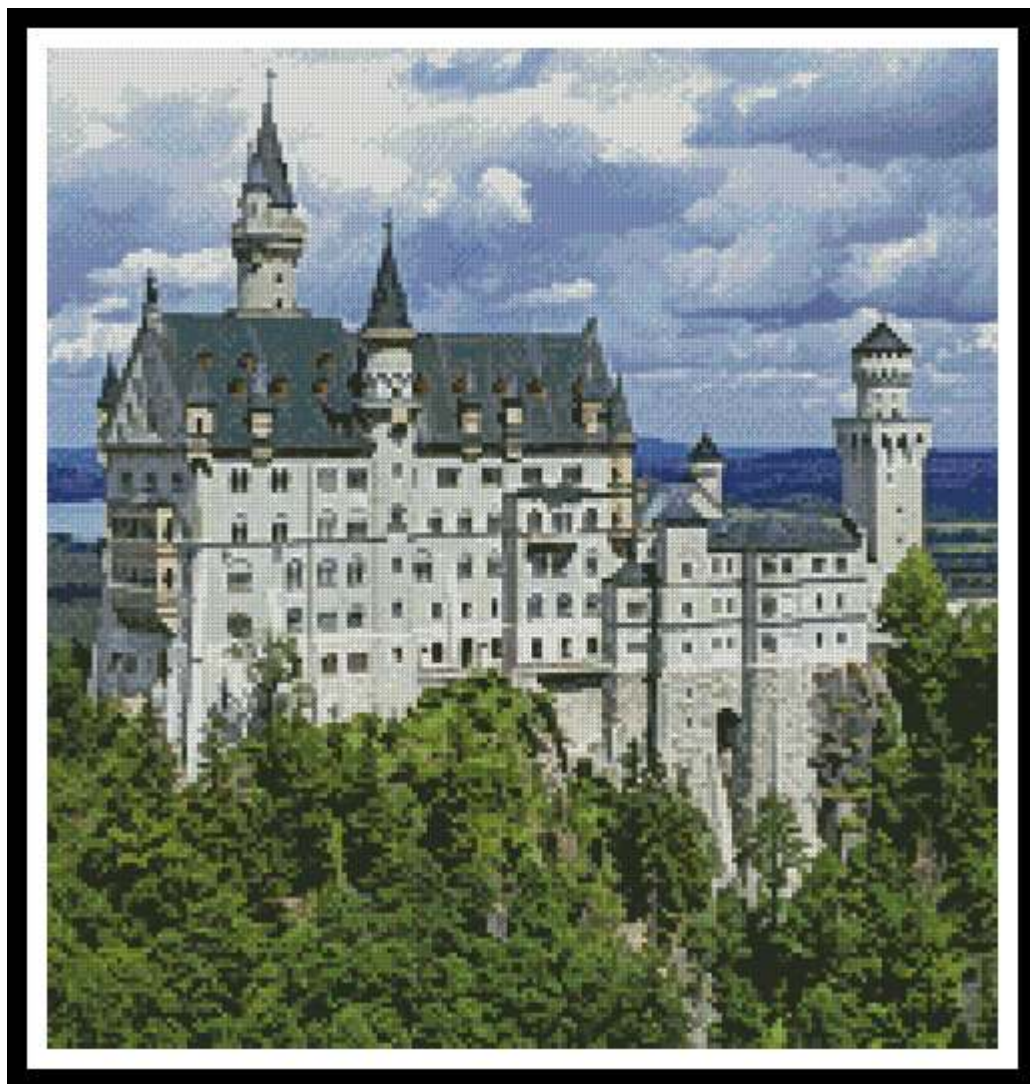


Artecy

CROSS STITCH

Neuschwanstein Castle 2 (Crop)



* Original image© jh146 - Pixabay. Cross Stitch Design by Tereena Clarke.

Completed Size = 190w x 200h Stitches

14 Count, 13.5w x 14.5h inches (34cm x 37cm)

16 Count, 12w x 12.5h inches (30cm x 32cm)

18 Count, 10.5w x 11.5h inches (27cm x 29cm)

Uses 72 DMC cotton colours. Only full cross stitches are used in this pattern.

Pattern Instructions

* This pattern can be worked on any fabric type, colour or count you prefer. To work out the size of the finished article, take the number of stitches wide and high and divide it by the count of your fabric (e.g. 14,16,18 count aida etc) to get the size in inches. Times it by 2.54 to get centimetres. We have the sizes in inches shown on the previous page. Also leave at least a few inches of fabric around each side of the design to assist in framing. The higher the fabric count the smaller the completed project will be.

* To put the pattern together look in the top and bottom corners. The page numbers in brackets show which page number it joins up to. Page 1 always starts at the top left hand side of the pattern. Our pages also have a shaded grey section. This indicates a 3 row overlap from adjoining pages to assist with reading the pattern. PLEASE DO NOT RESTITCH THIS AREA.

* You should begin at the centre of the pattern. To find the centre of the pattern it is just a matter of laying the pattern out and locating the arrows at the top and left hand side of the patterns, they are determined by dividing the stitch numbers wide and high in half. Where the two points meet in the middle, that is the centre.

* If you need more assistance to find the middle of your pattern or the page layout, please see the notes section on the colour symbol chart. The easiest way to stitch this pattern, as it has multiple pages, is to stitch one page at a time.

* We suggest using two strands of floss for each stitch and one strand for backstitching if the pattern calls for it.

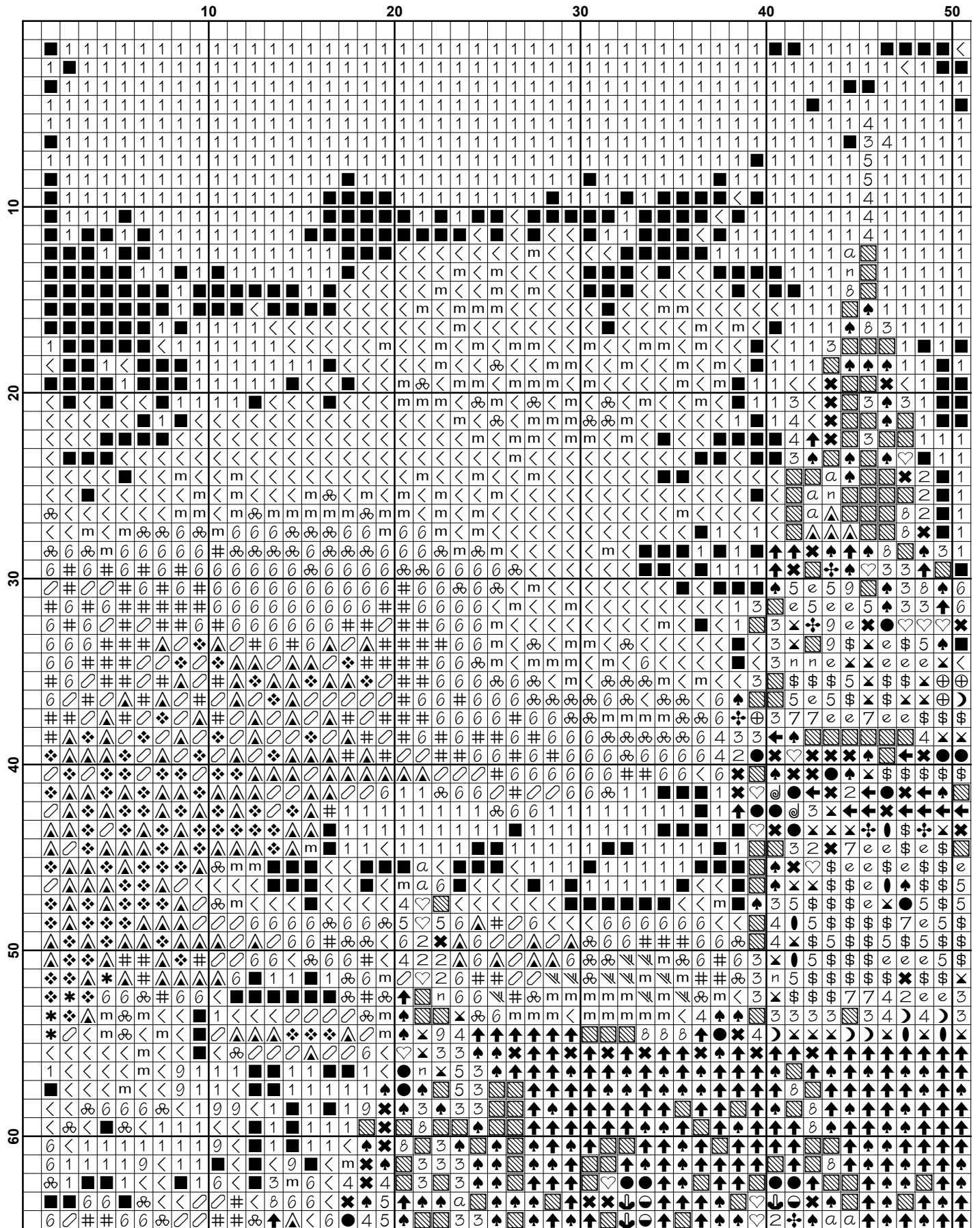
We hope you enjoy stitching our pattern.

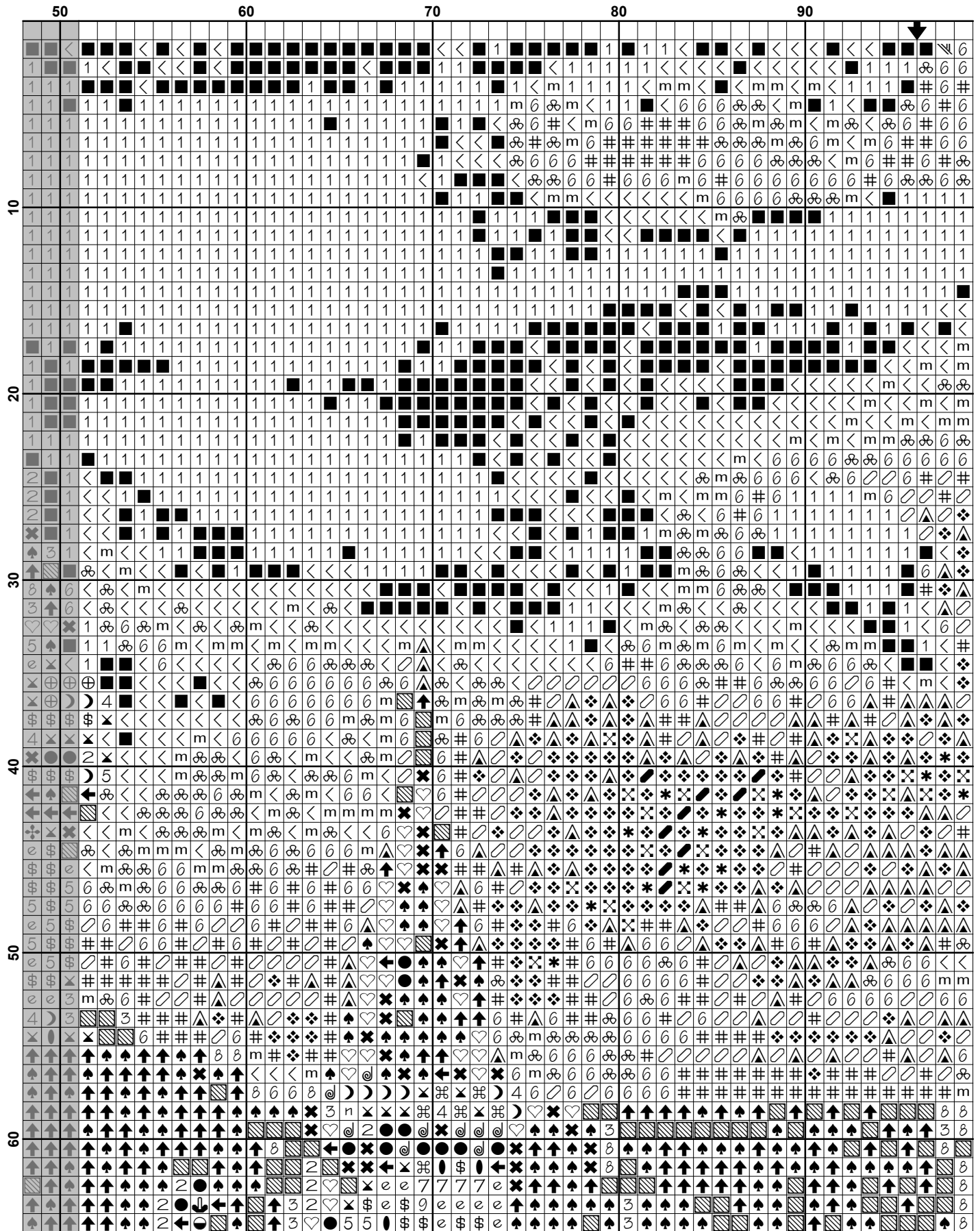
Thanks and Best Wishes
Tereena Clarke

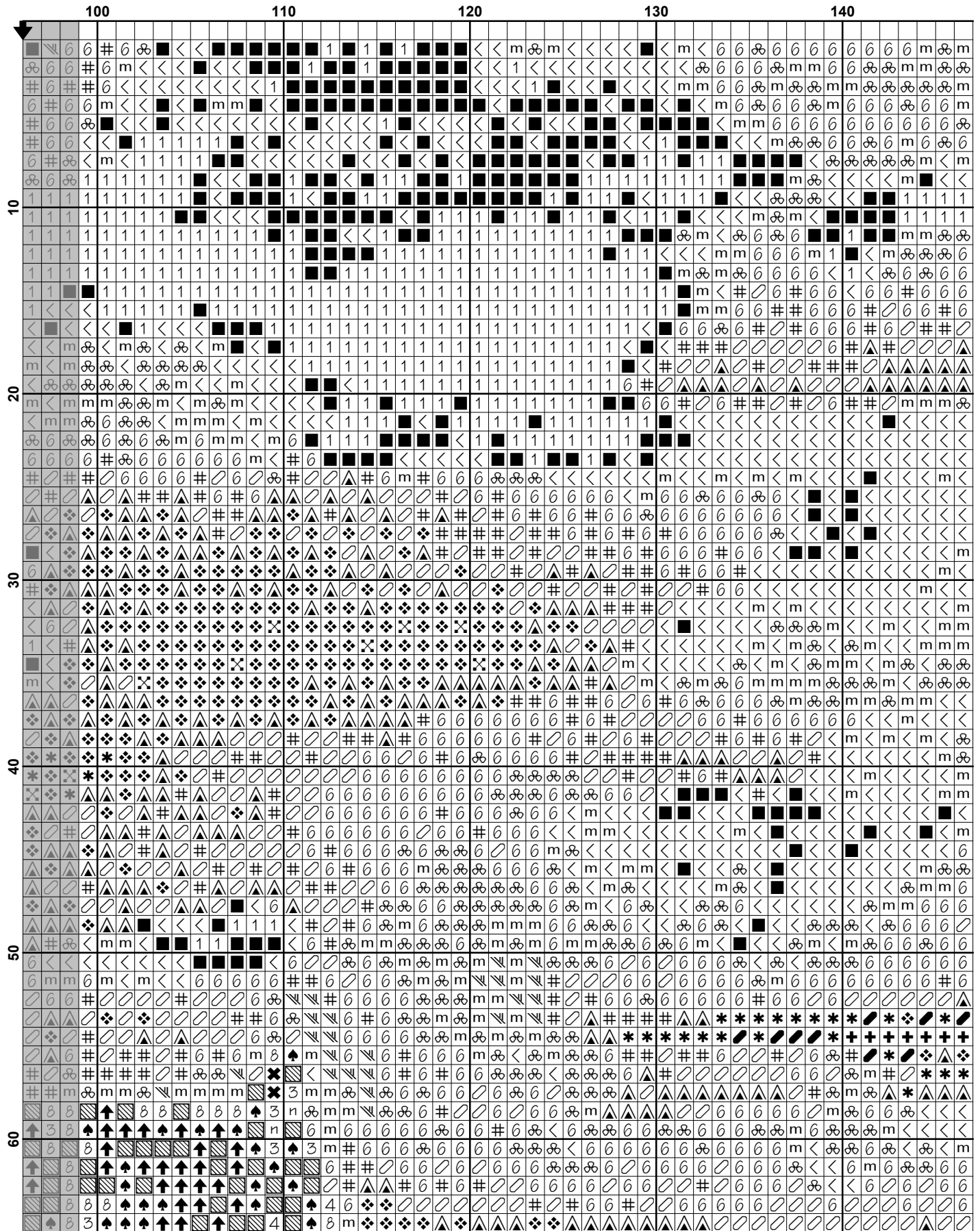
Artecy Cross Stitch
Po Box 3474
Tuggerah, NSW 2259
Australia

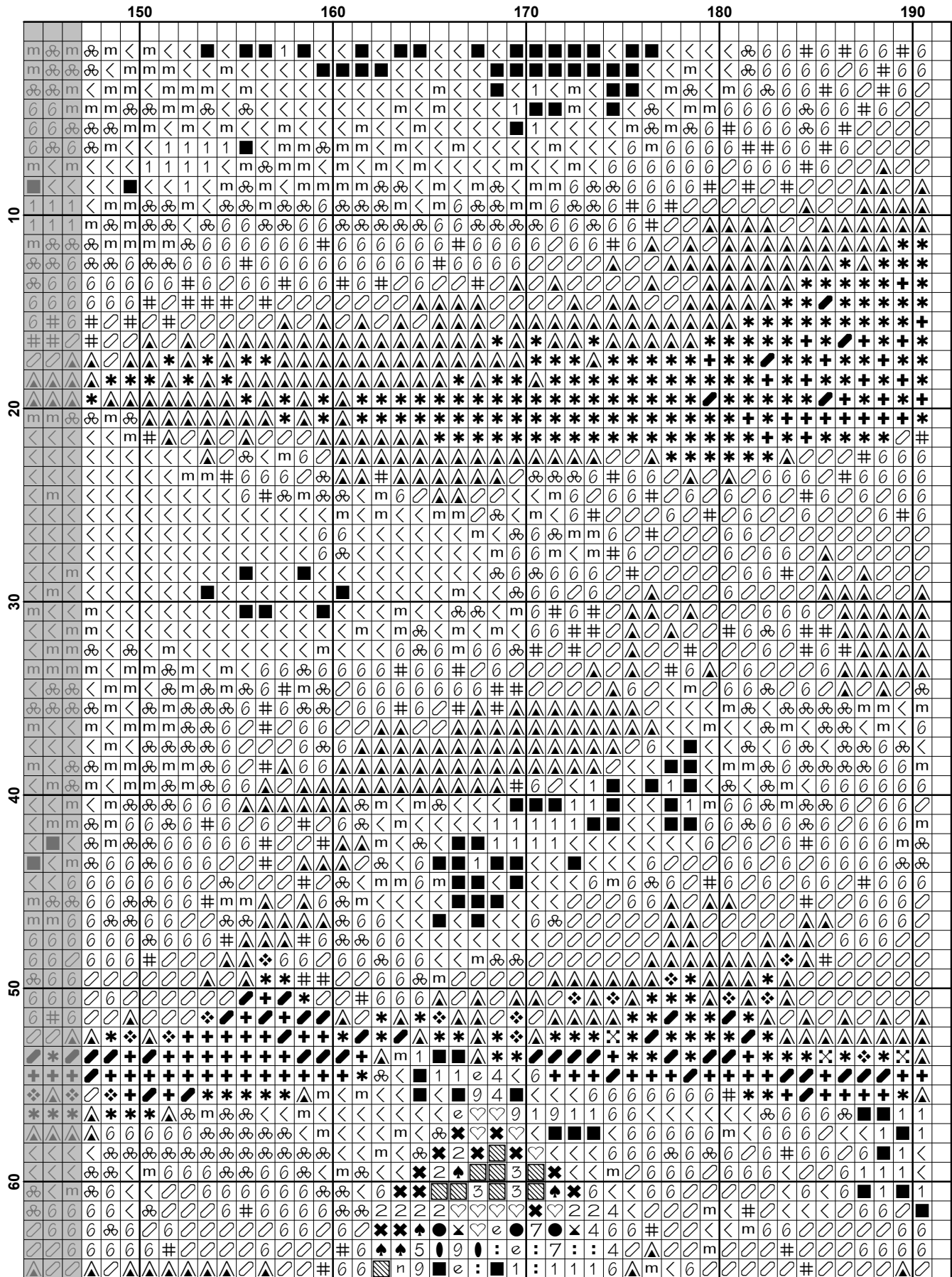
Websites: www.artecy.com and www.artecyshop.com
Email: artecy@artecy.com or stitch@artecyshop.com

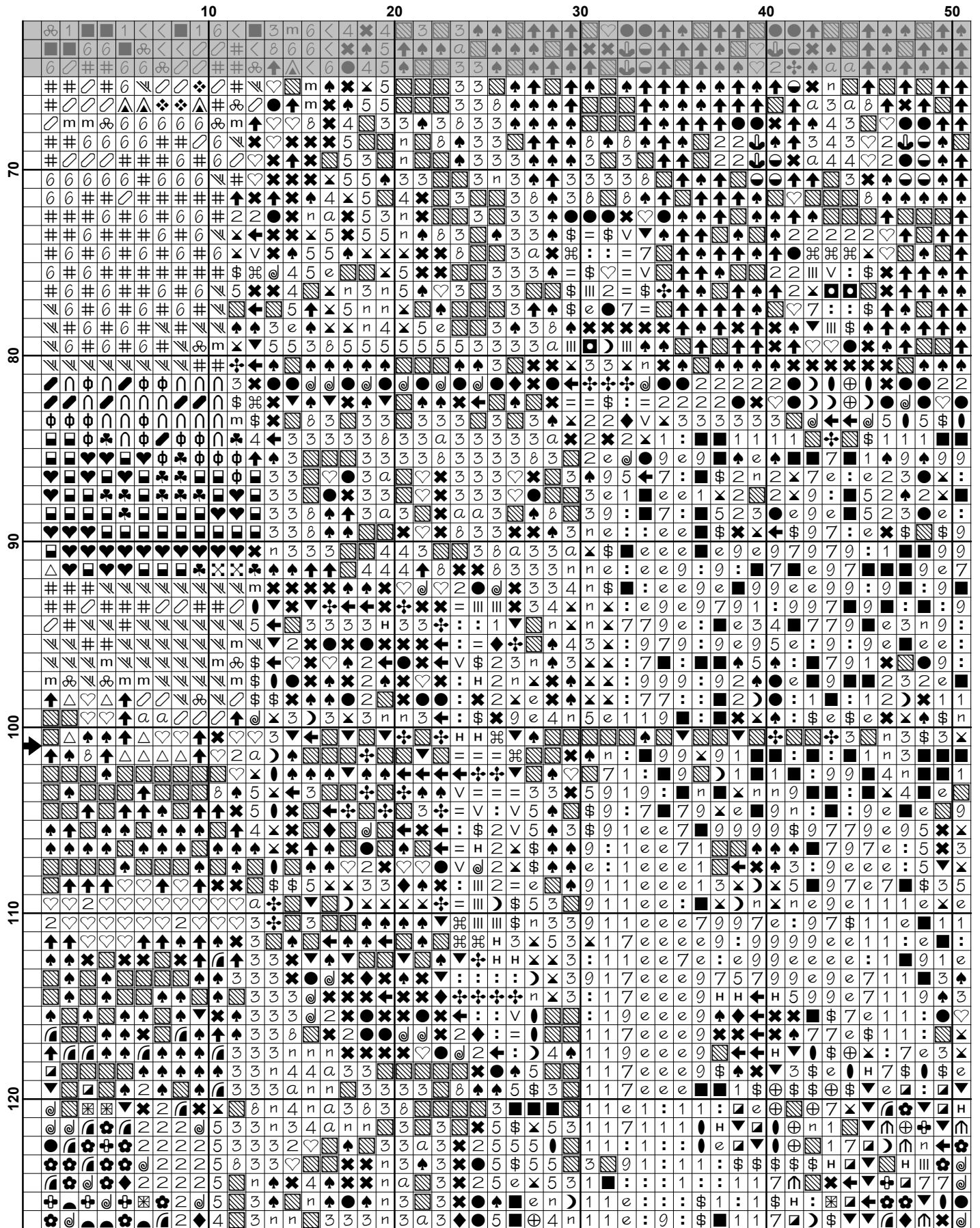
*Patterns are strictly for personal use only. It is against our copyright to make kits for sale from our designs or to sell, copy or redistribute this pattern in any form. You may not upload our patterns to any internet forums or groups or any other website. You may make 1 copy of this pattern for a working copy for your own personal use if needed.

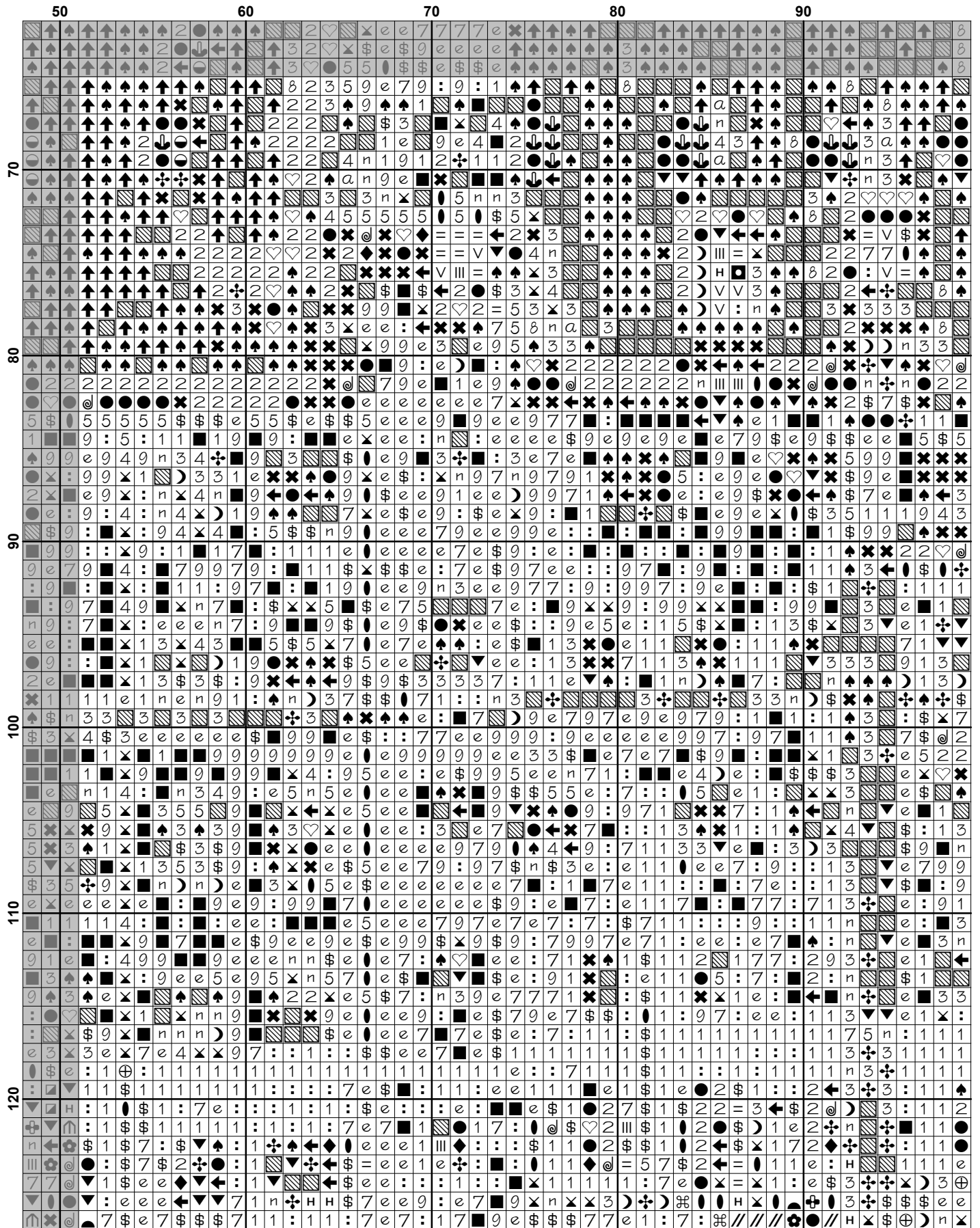


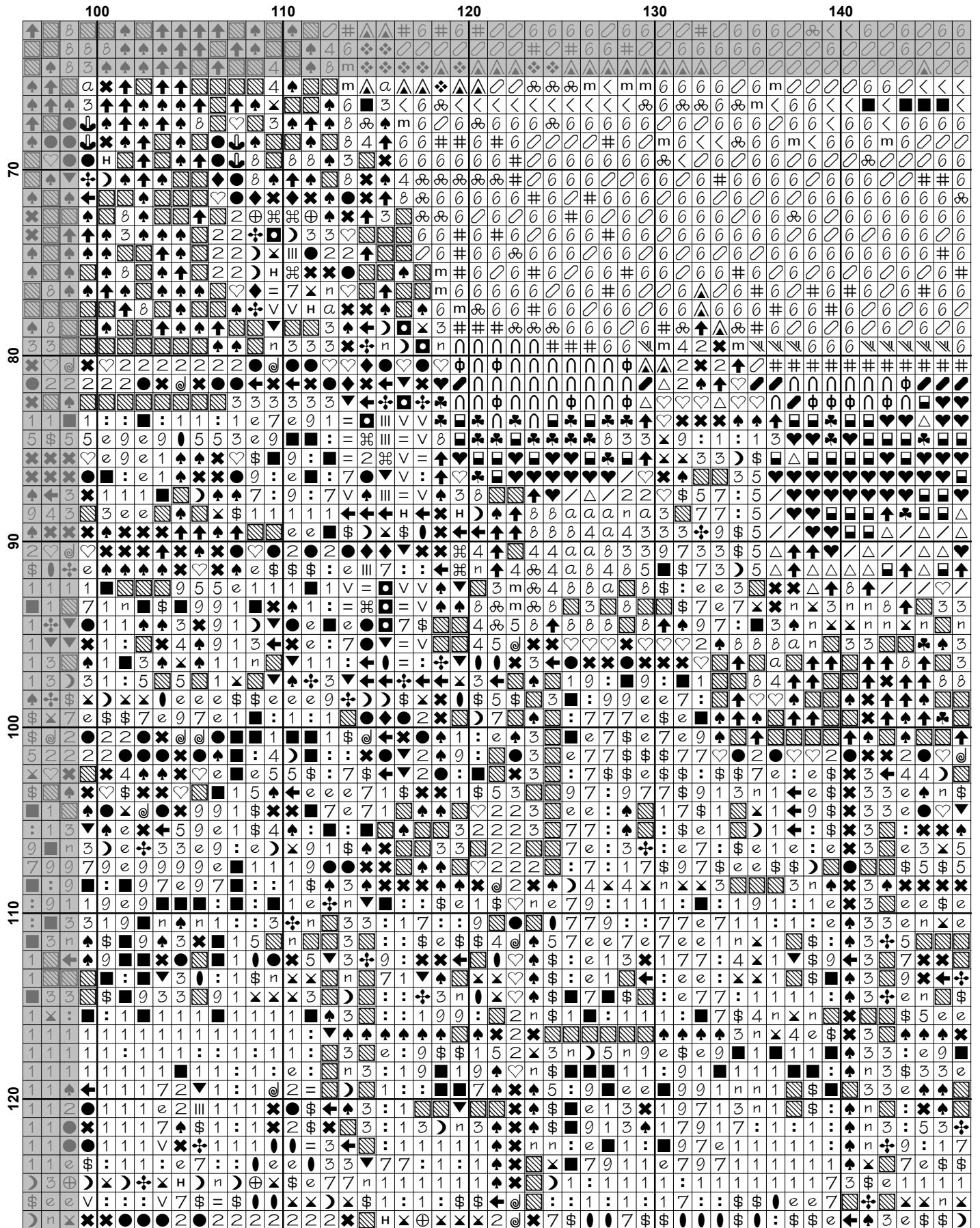


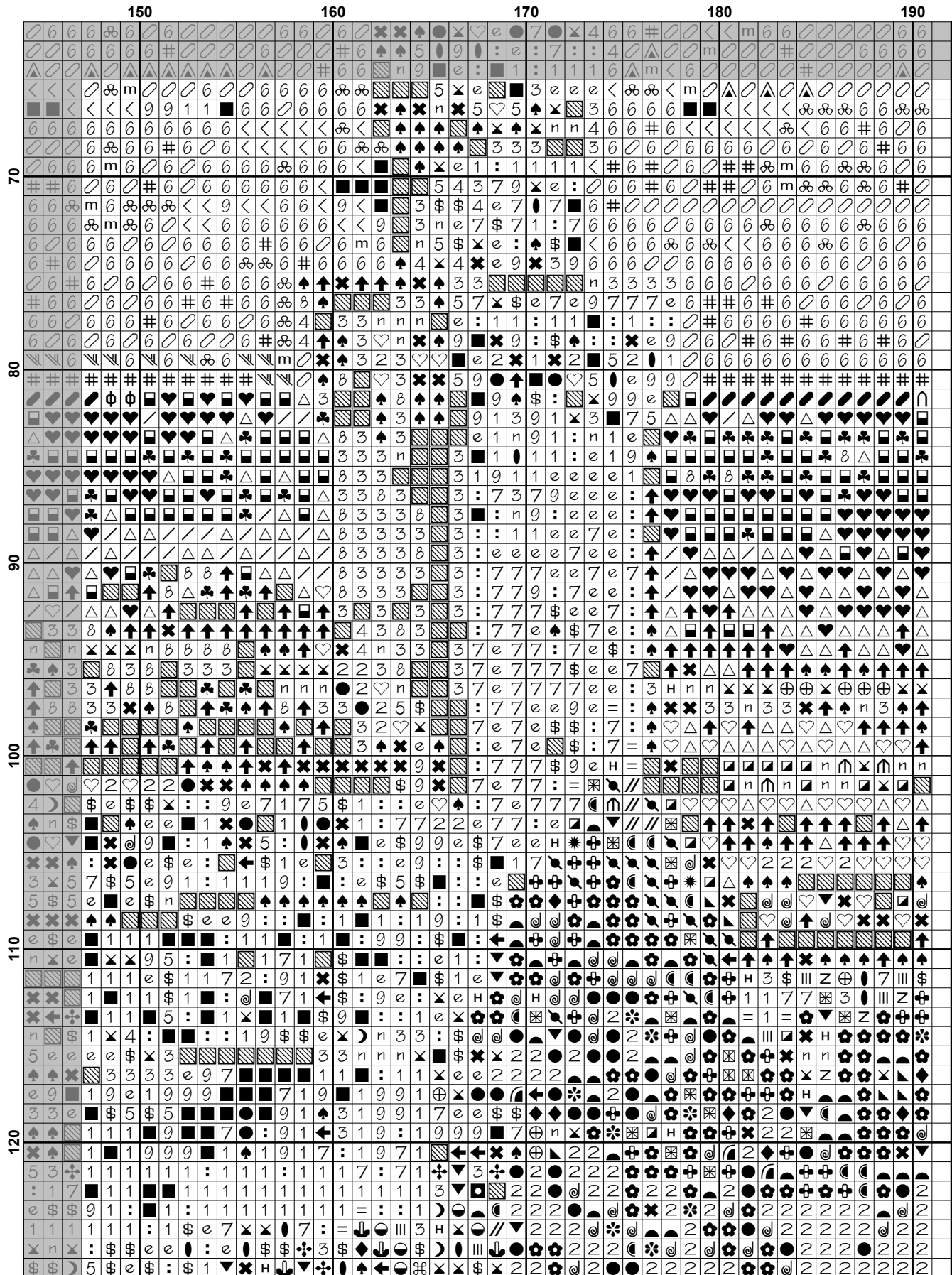


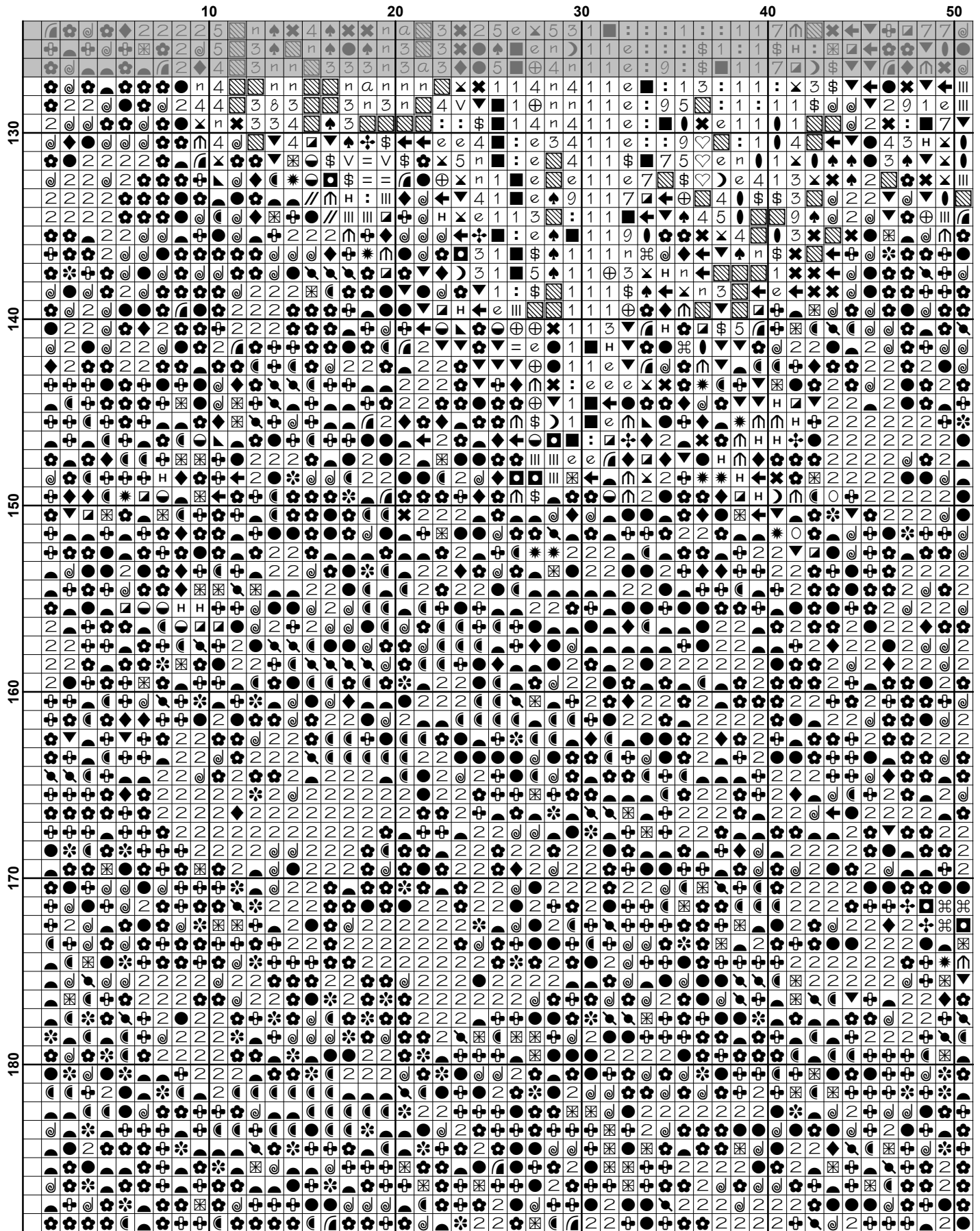


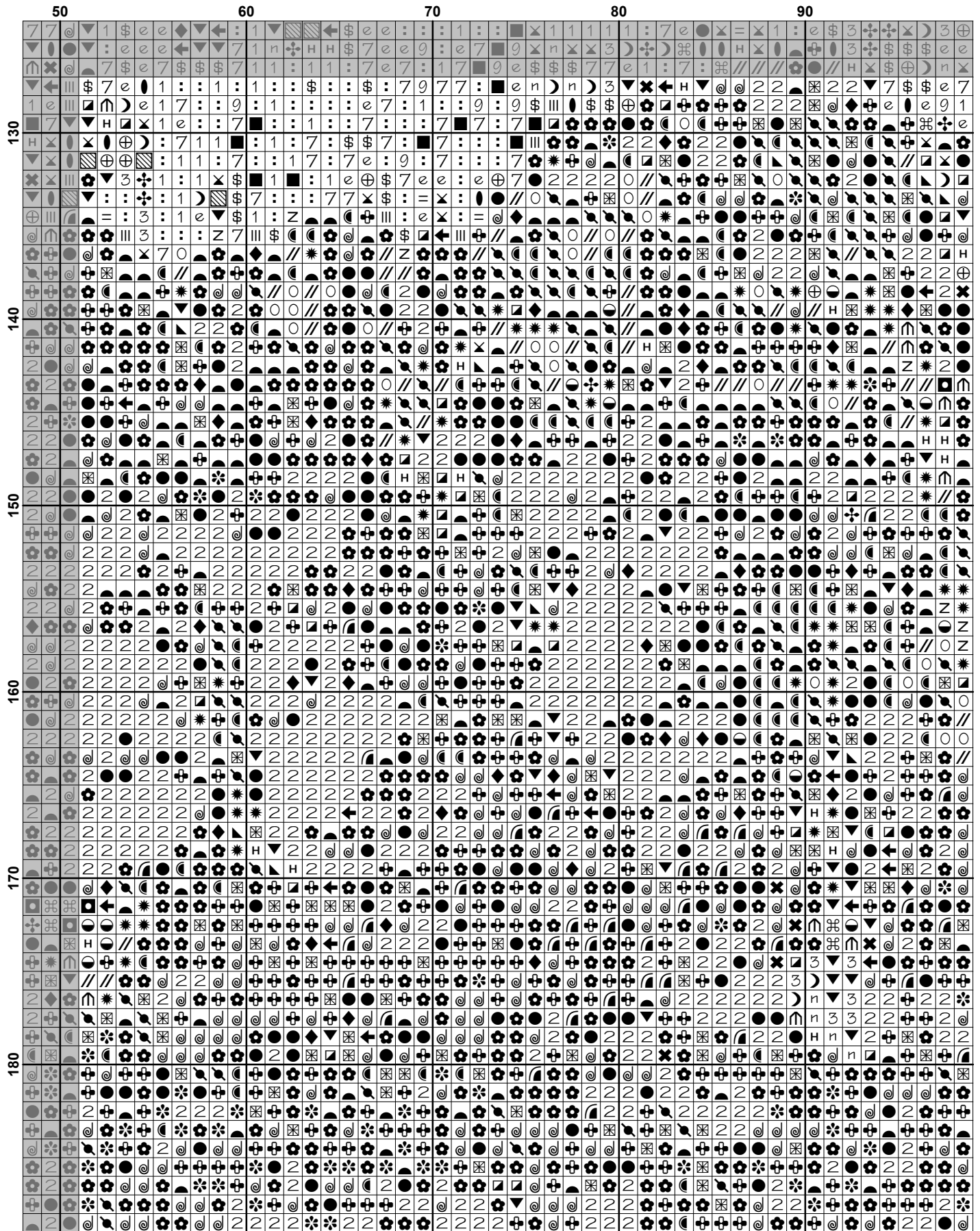


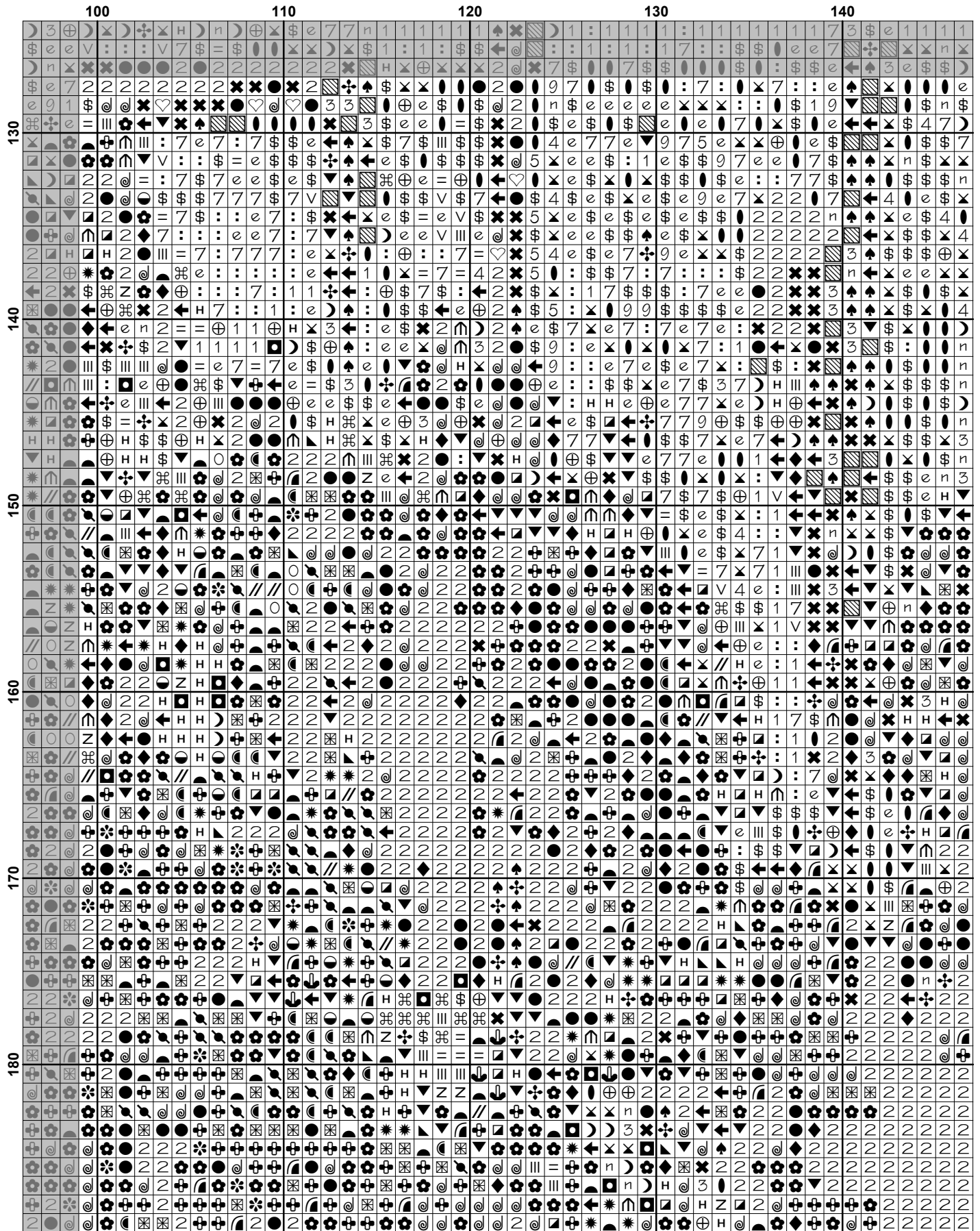


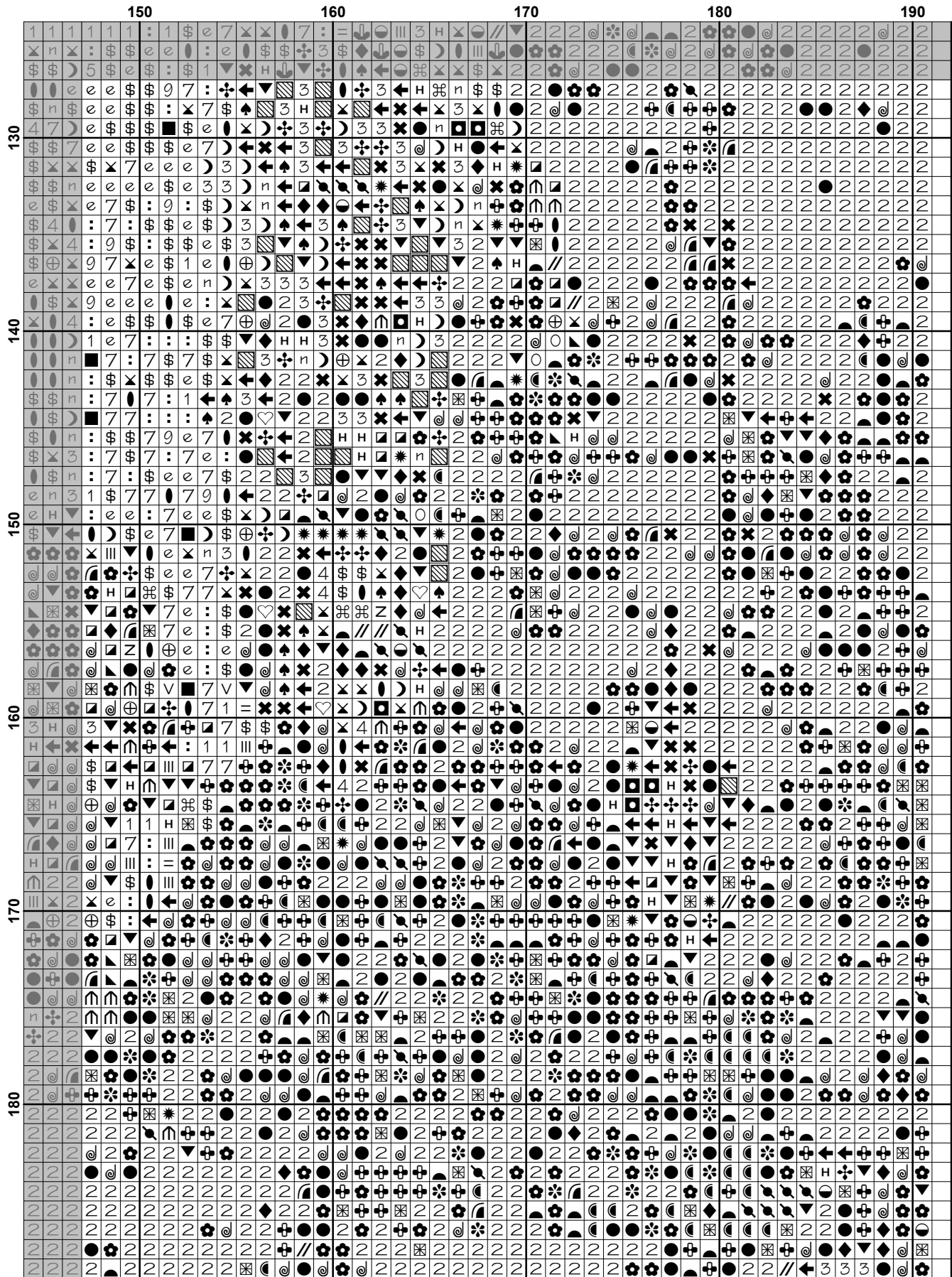


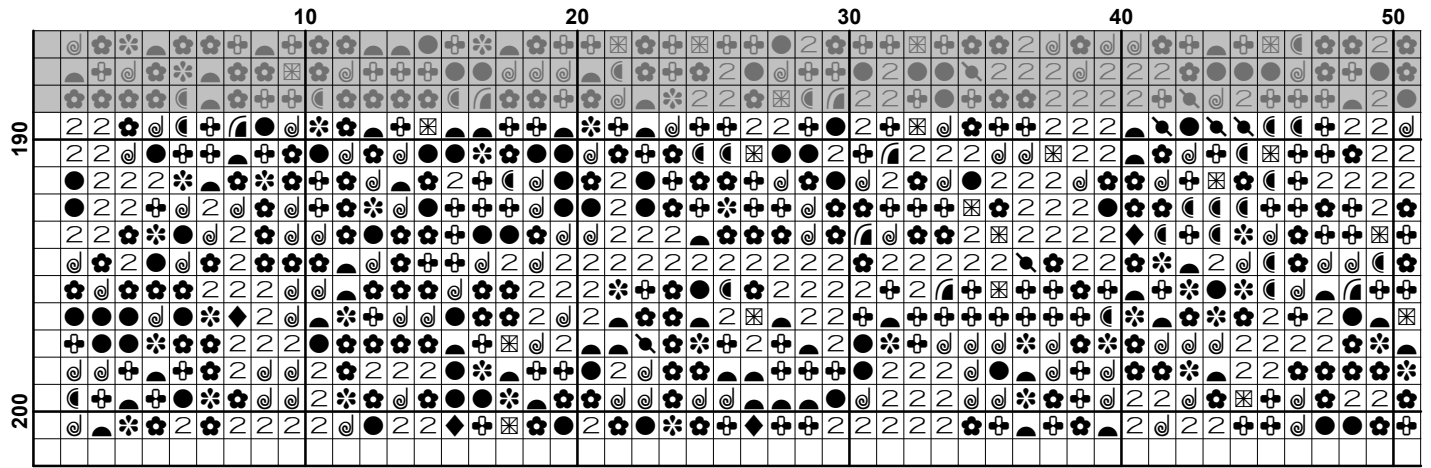


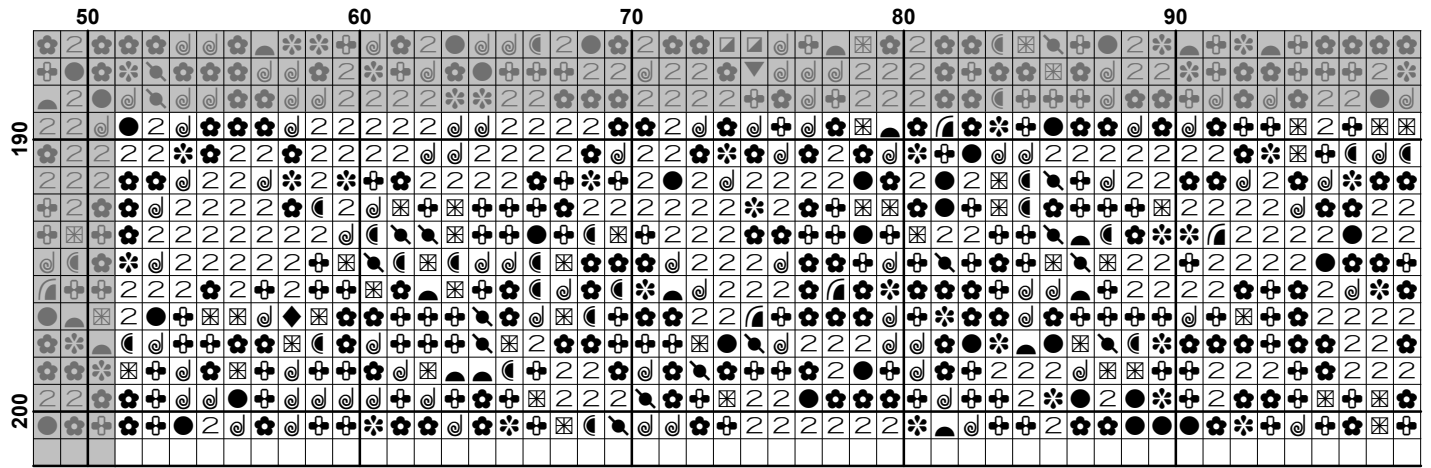


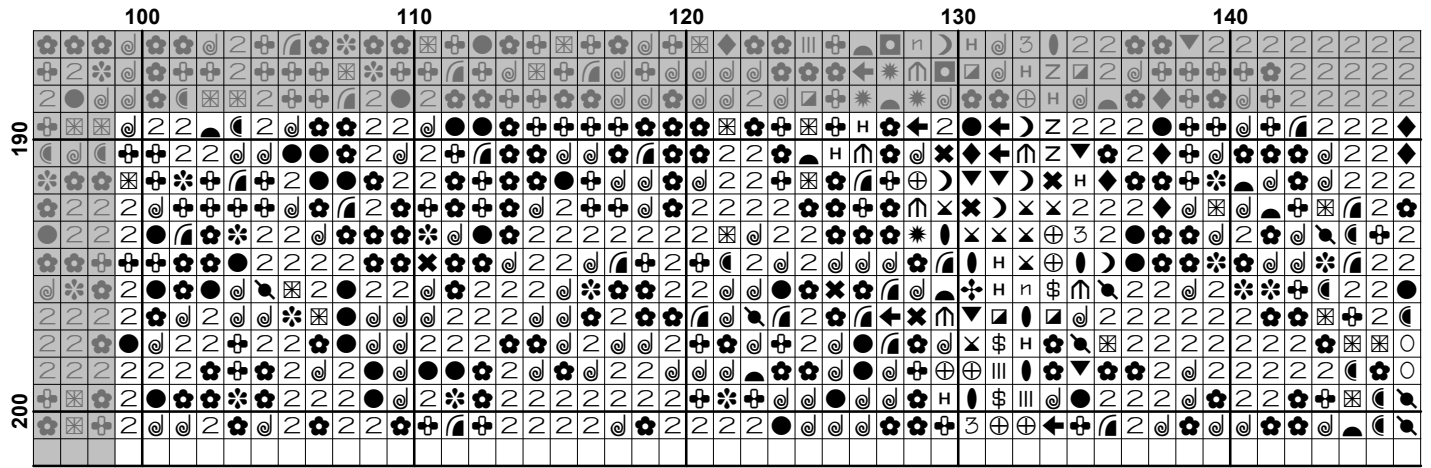


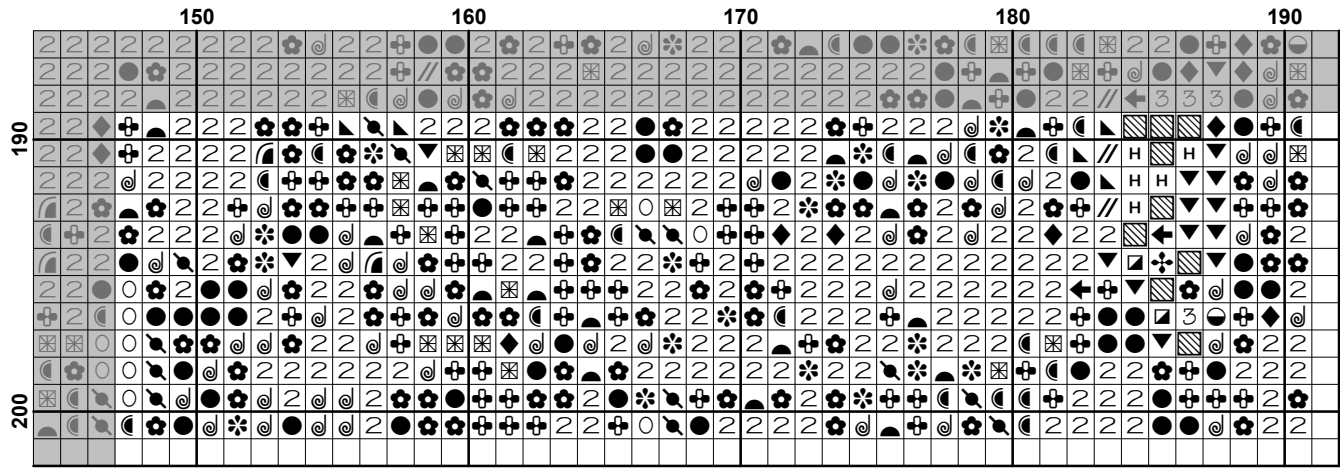






































Pattern Name: Neuschwanstein Castle 2 (Crop)
Designed By: Image by jh146 - Pixabay
Company: Artecy Cross Stitch
Copyright: Copyright Artecy Cross Stitch. All rights Reserved.
Fabric: Aida 14, White
 190w X 200h Stitches
Size(s): 14 Count, 13-1/2w X 14-1/4h in
 16 Count, 11-7/8w X 12-1/2h in
 18 Count, 10-1/2w X 11h in

Floss Used for Full Stitches:

Symbol	Strands	Type	Number	Color
	2	DMC	156	Blue Violet-MD LT
	2	DMC	157	Cornflower Blue-VY LT
	2	DMC	160	Gray Blue-MD
	2	DMC	161	Gray Blue
	2	DMC	169	Pewter-LT
	2	DMC	310	Black
	2	DMC	317	Pewter Gray
	2	DMC	318	Steel Gray-LT
	2	DMC	322	Baby Blue-DK
	2	DMC	341	Blue Violet-LT
	2	DMC	372	Mustard-LT
	2	DMC	413	Pewter Gray-DK
	2	DMC	414	Steel Gray-DK
	2	DMC	415	Pearl Gray
	2	DMC	453	Shell Gray-LT
	2	DMC	469	Avocado Green
	2	DMC	470	Avocado Green-LT
	2	DMC	471	Avocado Green-VY LT
	2	DMC	520	Fern Green-DK
	2	DMC	524	Fern Green-VY LT
	2	DMC	580	Moss Green-DK
	2	DMC	581	Moss Green
	2	DMC	613	Drab Brown-VY LT
	2	DMC	640	Beige Gray-VY DK
	2	DMC	647	Beaver Gray-MD
	2	DMC	648	Beaver Gray-LT
	2	DMC	704	Chartreuse-BRT
	2	DMC	712	Cream
	2	DMC	762	Pearl Gray-VY LT
	2	DMC	792	Cornflower Blue-DK
	2	DMC	793	Cornflower Blue-MD
	2	DMC	794	Cornflower Blue-LT
	2	DMC	796	Royal Blue-DK
	2	DMC	797	Royal Blue
	2	DMC	798	Delft Blue-DK
	2	DMC	799	Delft Blue-MD
	2	DMC	800	Delft Blue-Pale
	2	DMC	801	Coffee Brown-DK
	2	DMC	803	Baby Blue-UL VY DK
	2	DMC	809	Delft Blue
	2	DMC	820	Royal Blue-VY DK
	2	DMC	823	Navy Blue-DK
	2	DMC	841	Beige Brown-LT
	2	DMC	844	Beaver Brown-UL DK
	2	DMC	905	Parrot Green-DK
	2	DMC	930	Antique Blue-DK

Symbol	Strands	Type	Number	Color
	2	DMC	934	Black Avocado Green
	2	DMC	936	Avocado Green-VY DK
	2	DMC	951	Tawny-LT
	2	DMC	3012	Khaki Green-MD
	2	DMC	3031	Mocha Brown-VY DK
	2	DMC	3072	Beaver Gray-VY LT
	2	DMC	3325	Baby Blue-LT
	2	DMC	3346	Hunter Green
	2	DMC	3347	Yellow Green-MD
	2	DMC	3363	Pine Green-MD
	2	DMC	3364	Pine Green
	2	DMC	3371	Black Brown
	2	DMC	3747	Blue Violet-VY LT
	2	DMC	3756	Baby Blue-UL VY LT
	2	DMC	3774	Desert Sand-VY LT
	2	DMC	3782	Mocha Brown-LT
	2	DMC	3787	Brown Gray-DK
	2	DMC	3799	Pewter Gray-VY DK
	2	DMC	3807	Cornflower Blue
	2	DMC	3838	Lavender Blue-DK
	2	DMC	3839	Lavender Blue-MD
	2	DMC	3860	Cocoa
	2	DMC	3861	Cocoa-LT
	2	DMC	3862	Mocha Beige-DK
	2	DMC	3865	Winter White
	2	DMC	3866	Mocha Brown-UL VY LT

Notes:

The middle of this pattern can be found on page 6 and is 96 stitches across and 101 stitches down.

Pattern layout using page numbers in top left.

```





















1  2  3  4
5  6  7  8
9 10 11 12
13 14 15 16
    
```

Usage Summary

Strands Per Skein: 6

Skein Length: 313.0 in

Type	Number	Full	Half	Quarter	Petite	Back(in)	Str(in)	Spec(in)	French	Bead	Skein Est.
DMC 156	156	874	0	0	0	0.0	0.0	0.0	0	0	1.000
DMC 157	157	821	0	0	0	0.0	0.0	0.0	0	0	1.000
DMC 160	160	54	0	0	0	0.0	0.0	0.0	0	0	1.000
DMC 161	161	162	0	0	0	0.0	0.0	0.0	0	0	1.000
DMC 169	169	288	0	0	0	0.0	0.0	0.0	0	0	1.000
DMC 310	310	3195	0	0	0	0.0	0.0	0.0	0	0	2.000
DMC 317	317	1363	0	0	0	0.0	0.0	0.0	0	0	1.000
DMC 318	318	167	0	0	0	0.0	0.0	0.0	0	0	1.000
DMC 322	322	29	0	0	0	0.0	0.0	0.0	0	0	1.000
DMC 341	341	1856	0	0	0	0.0	0.0	0.0	0	0	1.000
DMC 372	372	24	0	0	0	0.0	0.0	0.0	0	0	1.000
DMC 413	413	1073	0	0	0	0.0	0.0	0.0	0	0	1.000
DMC 414	414	768	0	0	0	0.0	0.0	0.0	0	0	1.000
DMC 415	415	229	0	0	0	0.0	0.0	0.0	0	0	1.000
DMC 453	453	736	0	0	0	0.0	0.0	0.0	0	0	1.000
DMC 469	469	1377	0	0	0	0.0	0.0	0.0	0	0	1.000
DMC 470	470	299	0	0	0	0.0	0.0	0.0	0	0	1.000
DMC 471	471	83	0	0	0	0.0	0.0	0.0	0	0	1.000
DMC 520	520	157	0	0	0	0.0	0.0	0.0	0	0	1.000
DMC 524	524	111	0	0	0	0.0	0.0	0.0	0	0	1.000
DMC 580	580	770	0	0	0	0.0	0.0	0.0	0	0	1.000
DMC 581	581	435	0	0	0	0.0	0.0	0.0	0	0	1.000
DMC 613	613	84	0	0	0	0.0	0.0	0.0	0	0	1.000
DMC 640	640	173	0	0	0	0.0	0.0	0.0	0	0	1.000
DMC 647	647	497	0	0	0	0.0	0.0	0.0	0	0	1.000
DMC 648	648	249	0	0	0	0.0	0.0	0.0	0	0	1.000
DMC 704	704	49	0	0	0	0.0	0.0	0.0	0	0	1.000
DMC 712	712	818	0	0	0	0.0	0.0	0.0	0	0	1.000
DMC 762	762	494	0	0	0	0.0	0.0	0.0	0	0	1.000
DMC 792	792	71	0	0	0	0.0	0.0	0.0	0	0	1.000
DMC 793	793	260	0	0	0	0.0	0.0	0.0	0	0	1.000
DMC 794	794	1168	0	0	0	0.0	0.0	0.0	0	0	1.000
DMC 796	796	158	0	0	0	0.0	0.0	0.0	0	0	1.000
DMC 797	797	167	0	0	0	0.0	0.0	0.0	0	0	1.000
DMC 798	798	58	0	0	0	0.0	0.0	0.0	0	0	1.000
DMC 799	799	32	0	0	0	0.0	0.0	0.0	0	0	1.000
DMC 800	800	682	0	0	0	0.0	0.0	0.0	0	0	1.000
DMC 801	801	34	0	0	0	0.0	0.0	0.0	0	0	1.000
DMC 803	803	121	0	0	0	0.0	0.0	0.0	0	0	1.000
DMC 809	809	777	0	0	0	0.0	0.0	0.0	0	0	1.000
DMC 820	820	41	0	0	0	0.0	0.0	0.0	0	0	1.000
DMC 823	823	269	0	0	0	0.0	0.0	0.0	0	0	1.000
DMC 841	841	46	0	0	0	0.0	0.0	0.0	0	0	1.000
DMC 844	844	345	0	0	0	0.0	0.0	0.0	0	0	1.000
DMC 905	905	281	0	0	0	0.0	0.0	0.0	0	0	1.000
DMC 930	930	662	0	0	0	0.0	0.0	0.0	0	0	1.000
DMC 934	934	1242	0	0	0	0.0	0.0	0.0	0	0	1.000
DMC 936	936	2035	0	0	0	0.0	0.0	0.0	0	0	1.000
DMC 951	951	49	0	0	0	0.0	0.0	0.0	0	0	1.000
DMC 3012	3012	121	0	0	0	0.0	0.0	0.0	0	0	1.000
DMC 3031	3031	265	0	0	0	0.0	0.0	0.0	0	0	1.000
DMC 3072	3072	913	0	0	0	0.0	0.0	0.0	0	0	1.000

Type	Number	Full	Half	Quarter	Petite	Back(in)	Str(in)	Spec(in)	French	Bead	Skein	Est.
 DMC	3325	114	0	0	0	0.0	0.0	0.0	0	0	1.000	
 DMC	3346	474	0	0	0	0.0	0.0	0.0	0	0	1.000	
 DMC	3347	40	0	0	0	0.0	0.0	0.0	0	0	1.000	
 DMC	3363	156	0	0	0	0.0	0.0	0.0	0	0	1.000	
 DMC	3364	82	0	0	0	0.0	0.0	0.0	0	0	1.000	
 DMC	3371	1195	0	0	0	0.0	0.0	0.0	0	0	1.000	
 DMC	3747	1916	0	0	0	0.0	0.0	0.0	0	0	1.000	
 DMC	3756	1480	0	0	0	0.0	0.0	0.0	0	0	1.000	
 DMC	3774	93	0	0	0	0.0	0.0	0.0	0	0	1.000	
 DMC	3782	64	0	0	0	0.0	0.0	0.0	0	0	1.000	
 DMC	3787	401	0	0	0	0.0	0.0	0.0	0	0	1.000	
 DMC	3799	726	0	0	0	0.0	0.0	0.0	0	0	1.000	
 DMC	3807	86	0	0	0	0.0	0.0	0.0	0	0	1.000	
 DMC	3838	88	0	0	0	0.0	0.0	0.0	0	0	1.000	
 DMC	3839	461	0	0	0	0.0	0.0	0.0	0	0	1.000	
 DMC	3860	180	0	0	0	0.0	0.0	0.0	0	0	1.000	
 DMC	3861	163	0	0	0	0.0	0.0	0.0	0	0	1.000	
 DMC	3862	64	0	0	0	0.0	0.0	0.0	0	0	1.000	
 DMC	3865	2654	0	0	0	0.0	0.0	0.0	0	0	2.000	
 DMC	3866	531	0	0	0	0.0	0.0	0.0	0	0	1.000	