

Artecy

CROSS STITCH

Pink Floral



* Original image Courtesy of Kaz - Pixabay.
Cross Stitch Design by Tereena Clarke.

Completed Size = 169w x 196h Stitches

14 Count, 12.5w x 14h inches (32cm x 36cm)

16 Count, 11w x 12.5h inches (28cm x 32cm)

18 Count, 9.5w x 11h inches (24cm x 28cm)

Uses 39 DMC cotton colours. Only full cross stitches are used in this pattern.

Pattern Instructions

* This pattern can be worked on any fabric type, colour or count you prefer. To work out the size of the finished article, take the number of stitches wide and high and divide it by the count of your fabric (e.g. 14,16,18 count aida etc) to get the size in inches. Times it by 2.54 to get centimetres. We have the sizes in inches shown on the previous page. Also leave at least a few inches of fabric around each side of the design to assist in framing. The higher the fabric count the smaller the completed project will be.

* To put the pattern together look in the top and bottom corners. The page numbers in brackets show which page number it joins up to. Page 1 always starts at the top left hand side of the pattern. Our pages also have a shaded grey section. This indicates a 3 row overlap from adjoining pages to assist with reading the pattern. PLEASE DO NOT RESTITCH THIS AREA.

* You should begin at the centre of the pattern. To find the centre of the pattern it is just a matter of laying the pattern out and locating the arrows at the top and left hand side of the patterns, they are determined by dividing the stitch numbers wide and high in half. Where the two points meet in the middle, that is the centre.

* If you need more assistance to find the middle of your pattern or the page layout, please see the notes section on the colour symbol chart. The easiest way to stitch this pattern, as it has multiple pages, is to stitch one page at a time.

* We suggest using two strands of floss for each stitch and one strand for backstitching if the pattern calls for it.

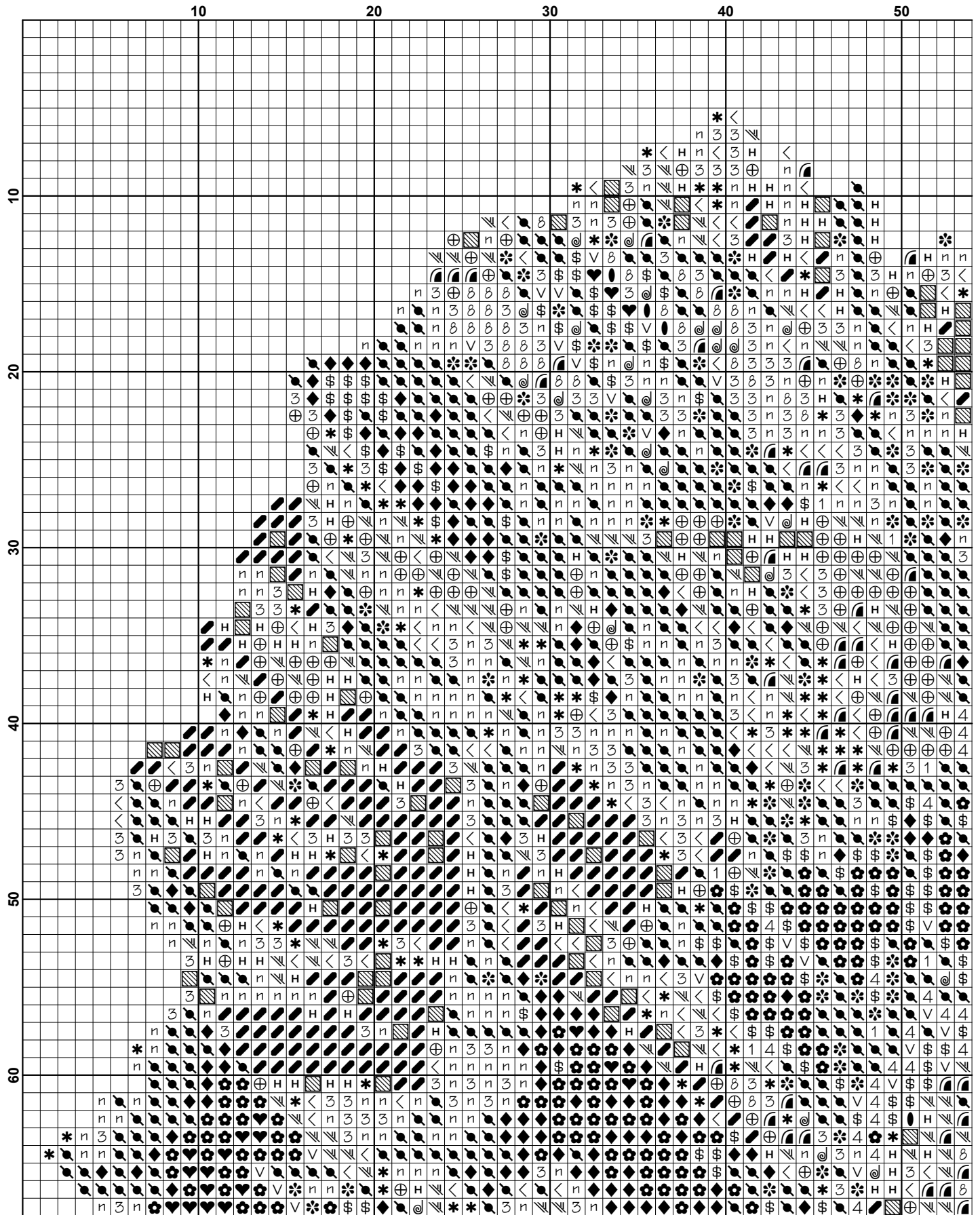
We hope you enjoy stitching our pattern.

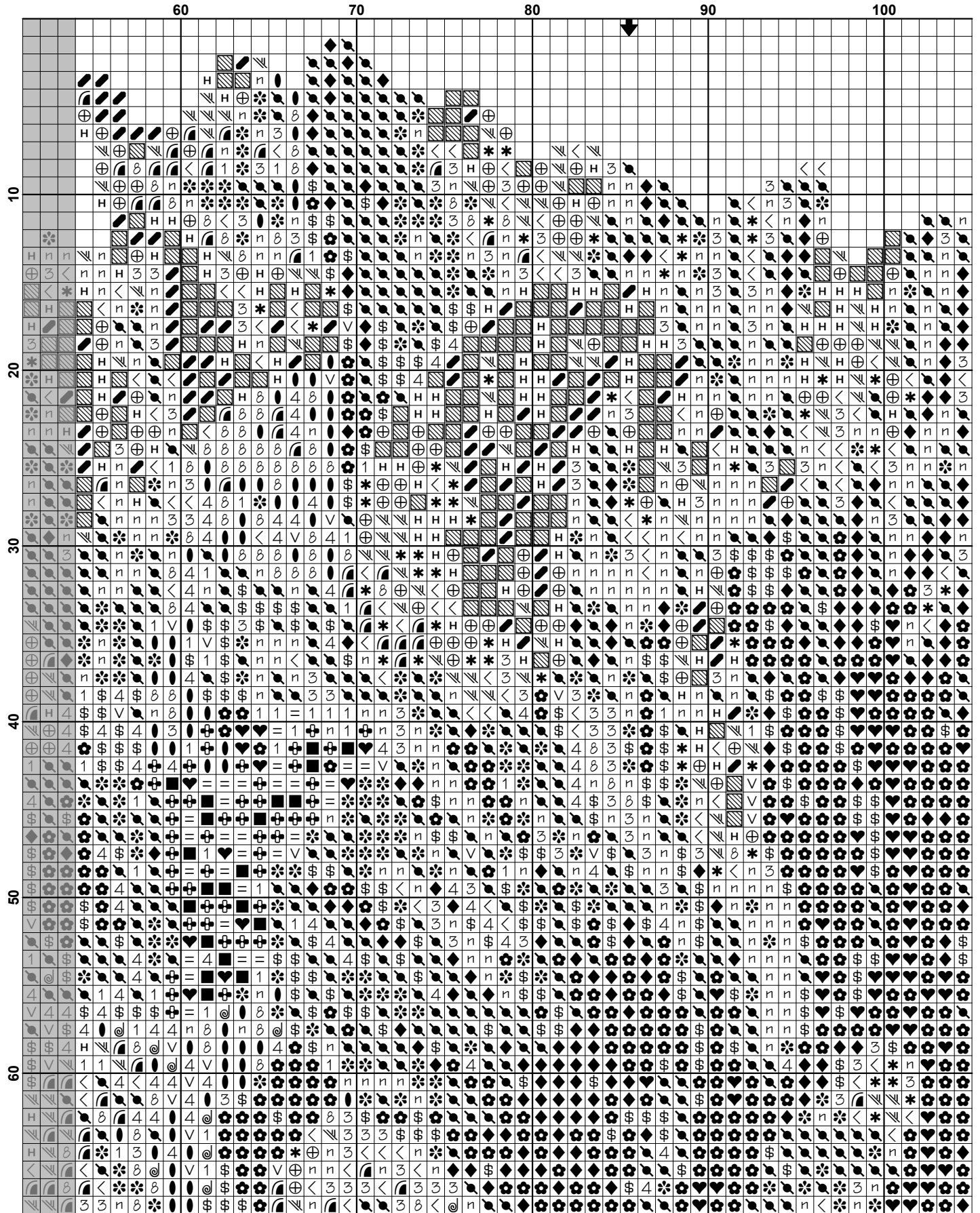
Thanks and Best Wishes
Tereena Clarke

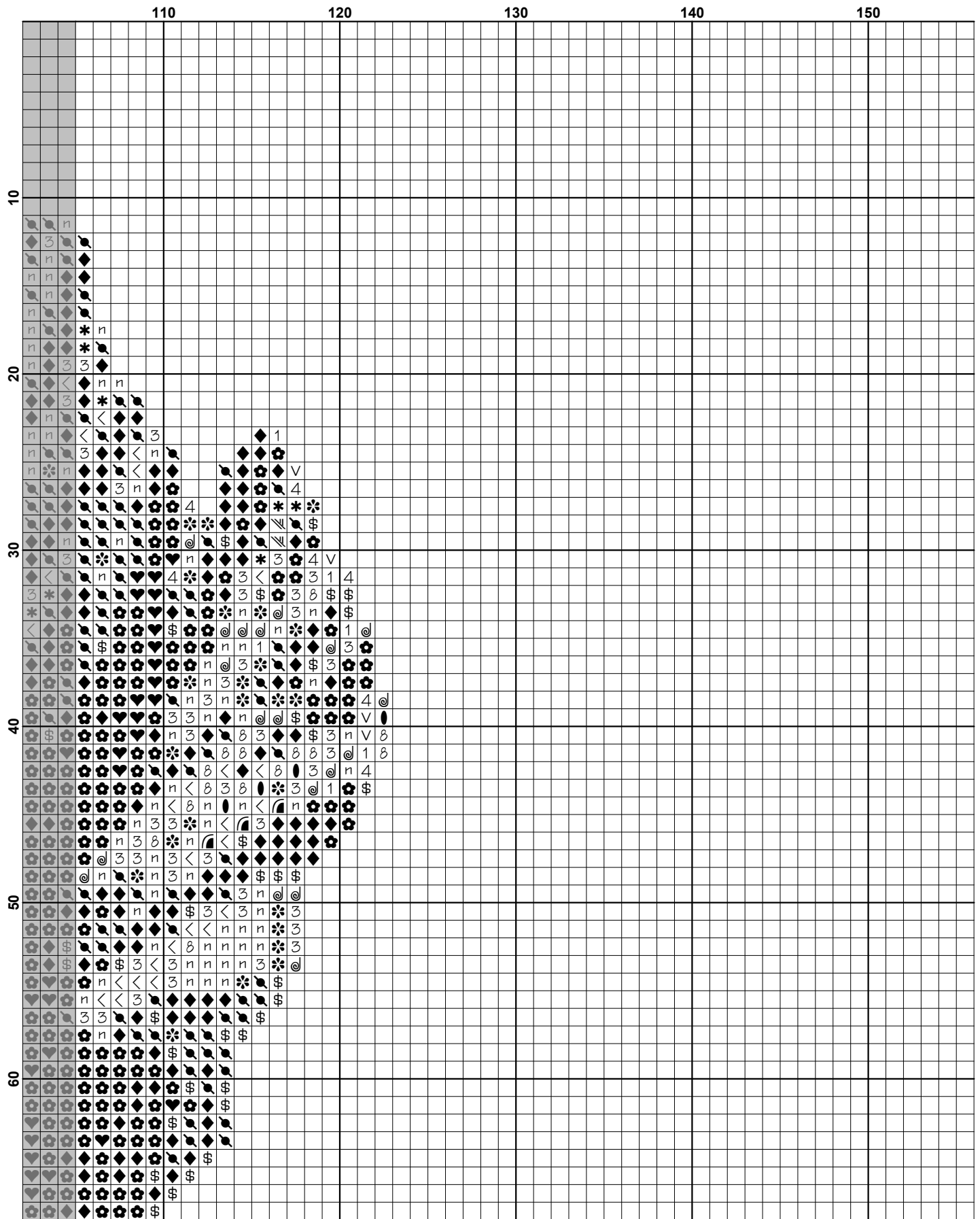
Artecy Cross Stitch
Po Box 3474
Tuggerah, NSW 2259
Australia

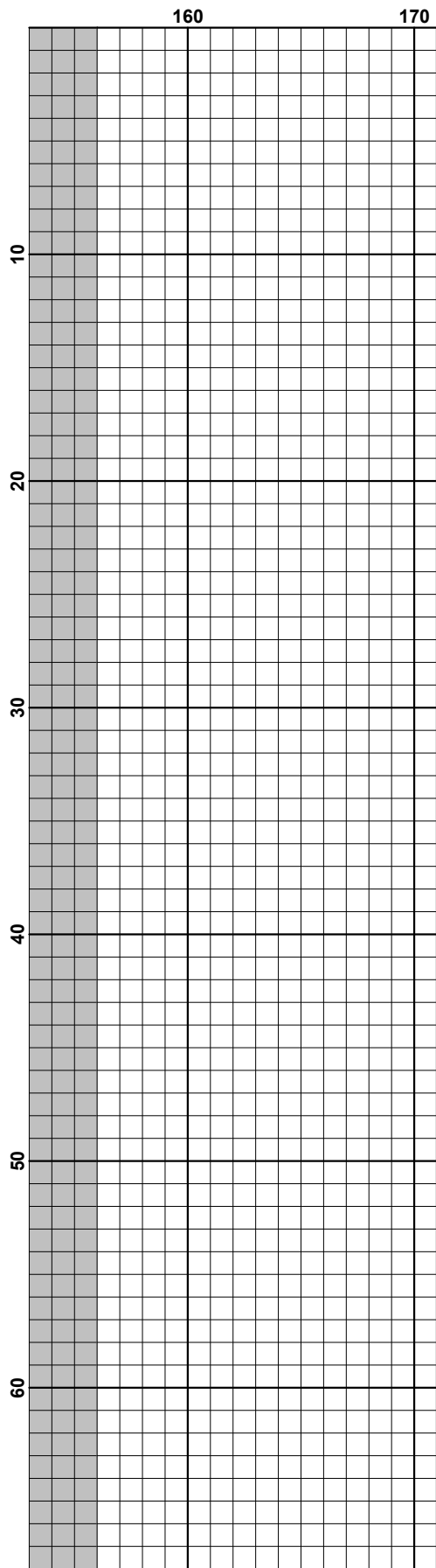
Websites: www.artecy.com and www.artecyshop.com
Email: artecy@artecy.com or stitch@artecyshop.com

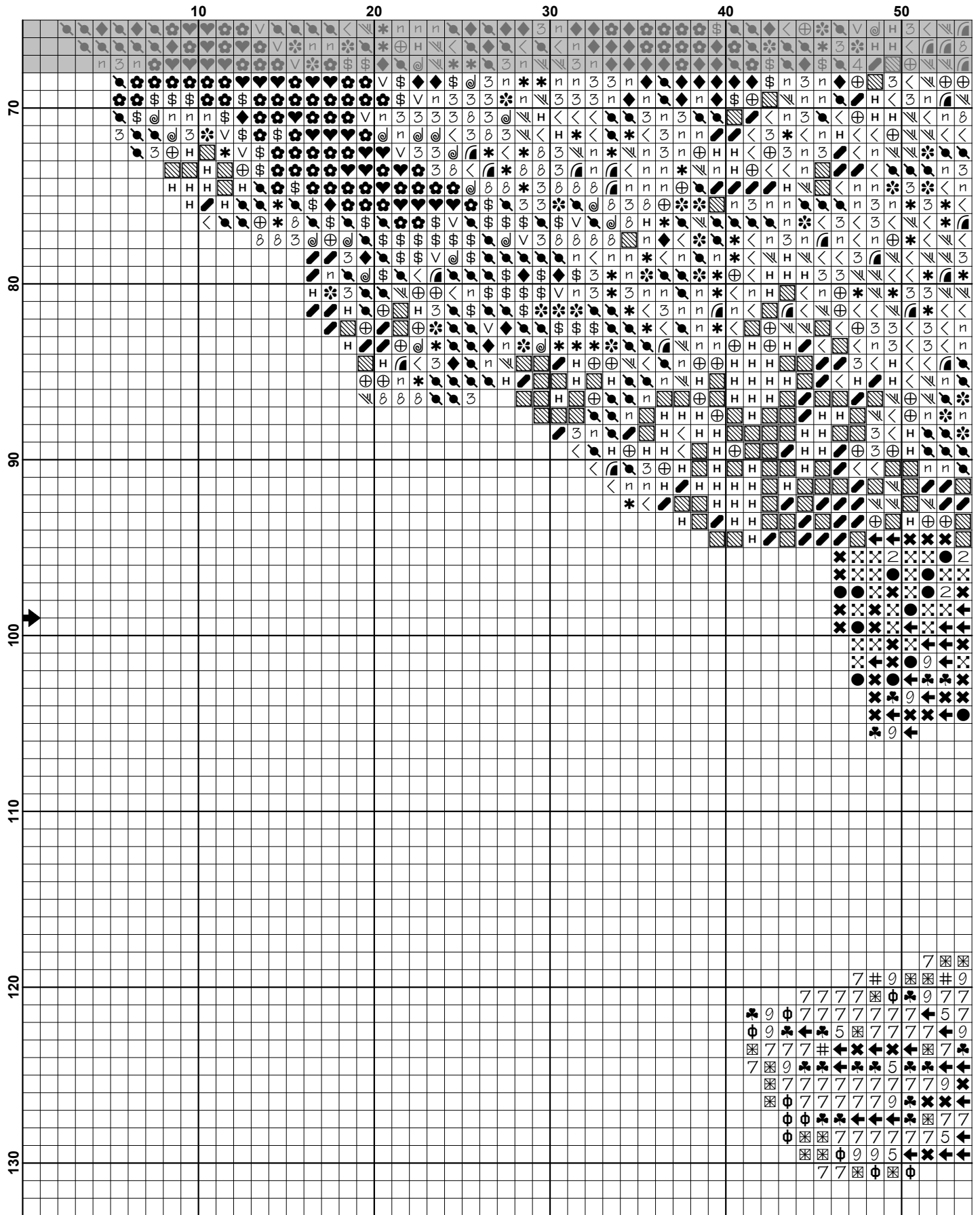
*Patterns are strictly for personal use only. It is against our copyright to make kits for sale from our designs or to sell, copy or redistribute this pattern in any form. You may not upload our patterns to any internet forums or groups or any other website. You may make 1 copy of this pattern for a working copy for your own personal use if needed.

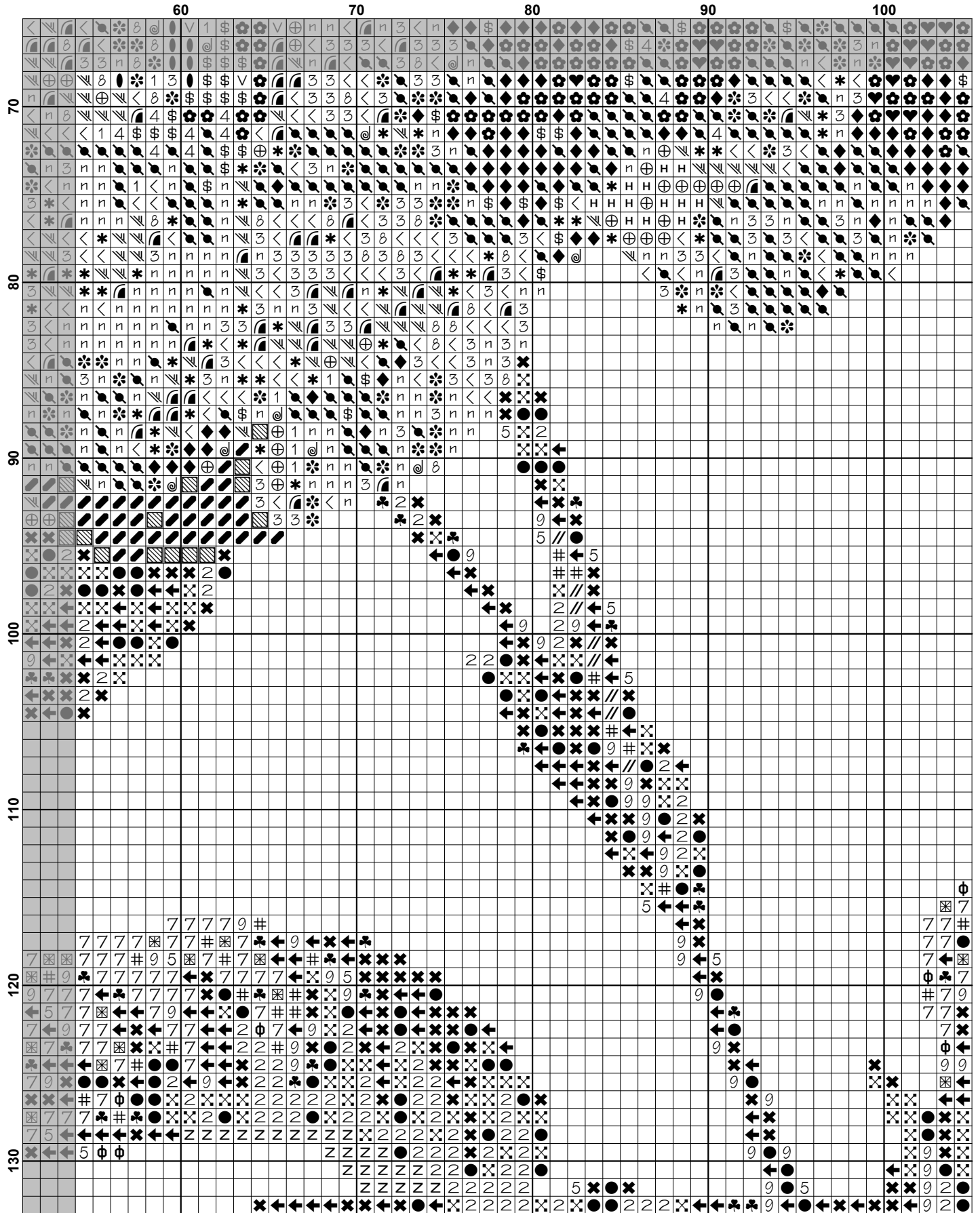


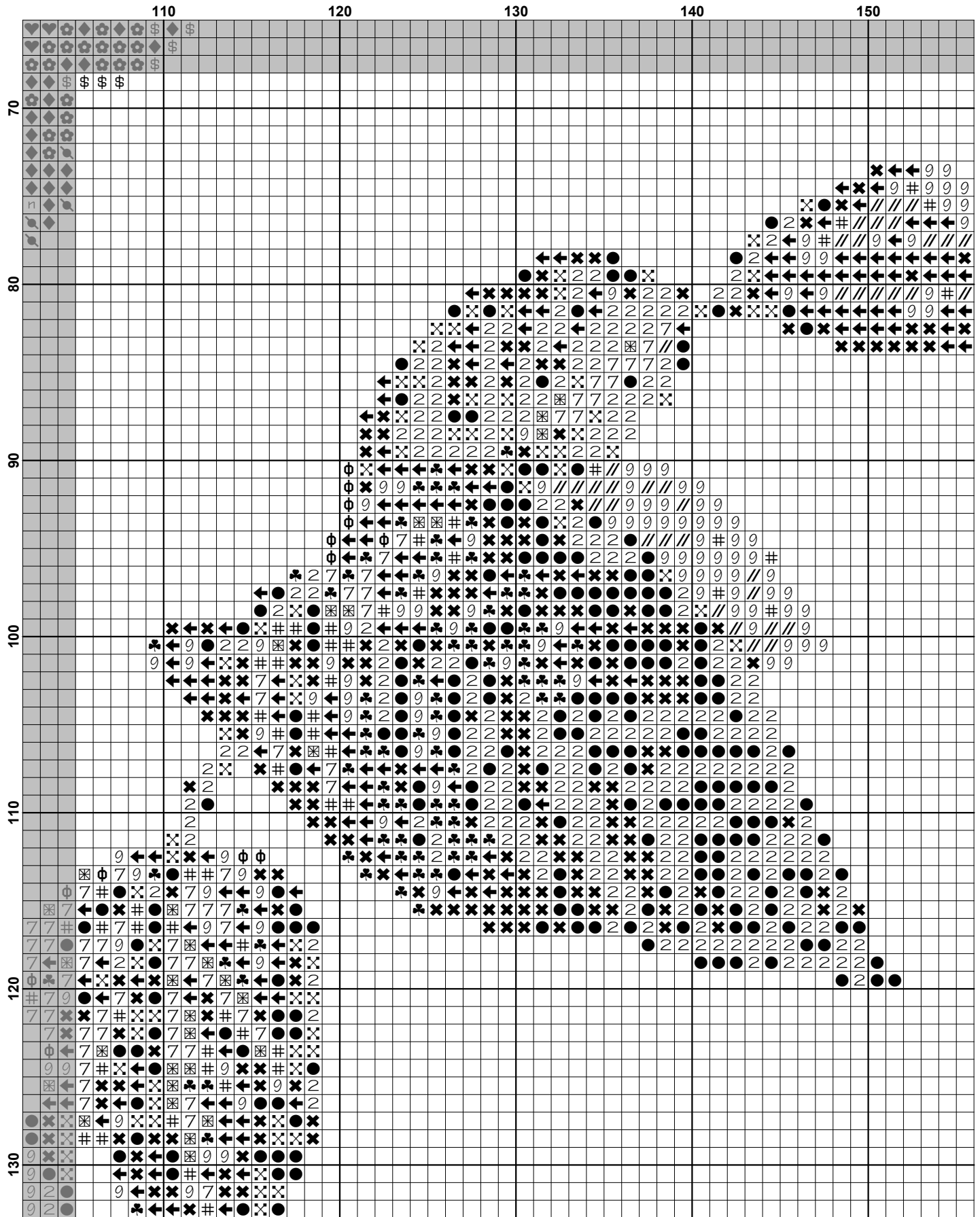


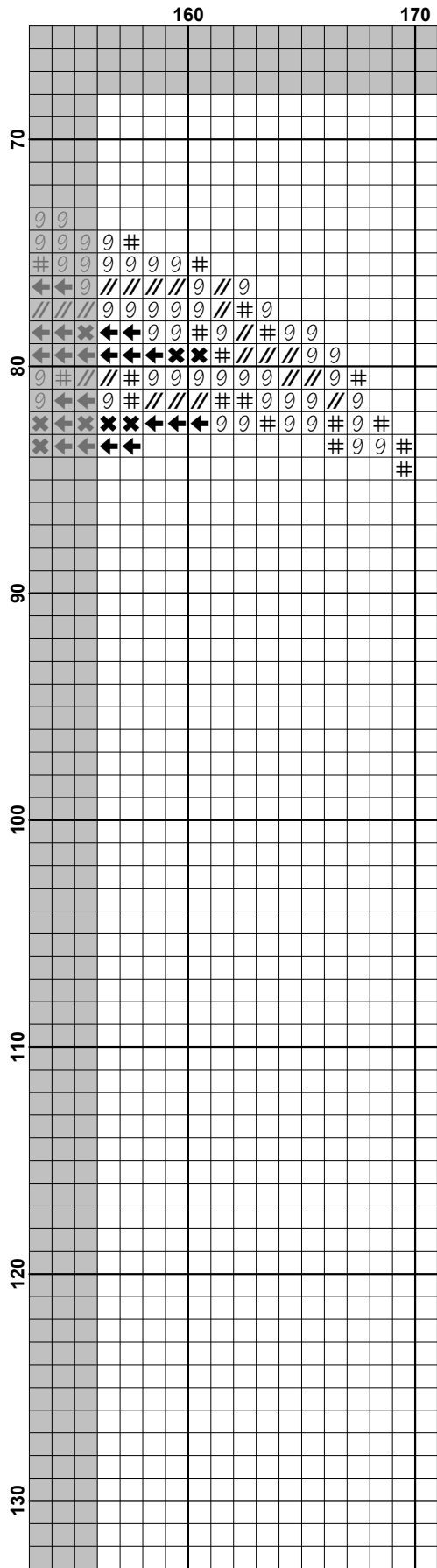


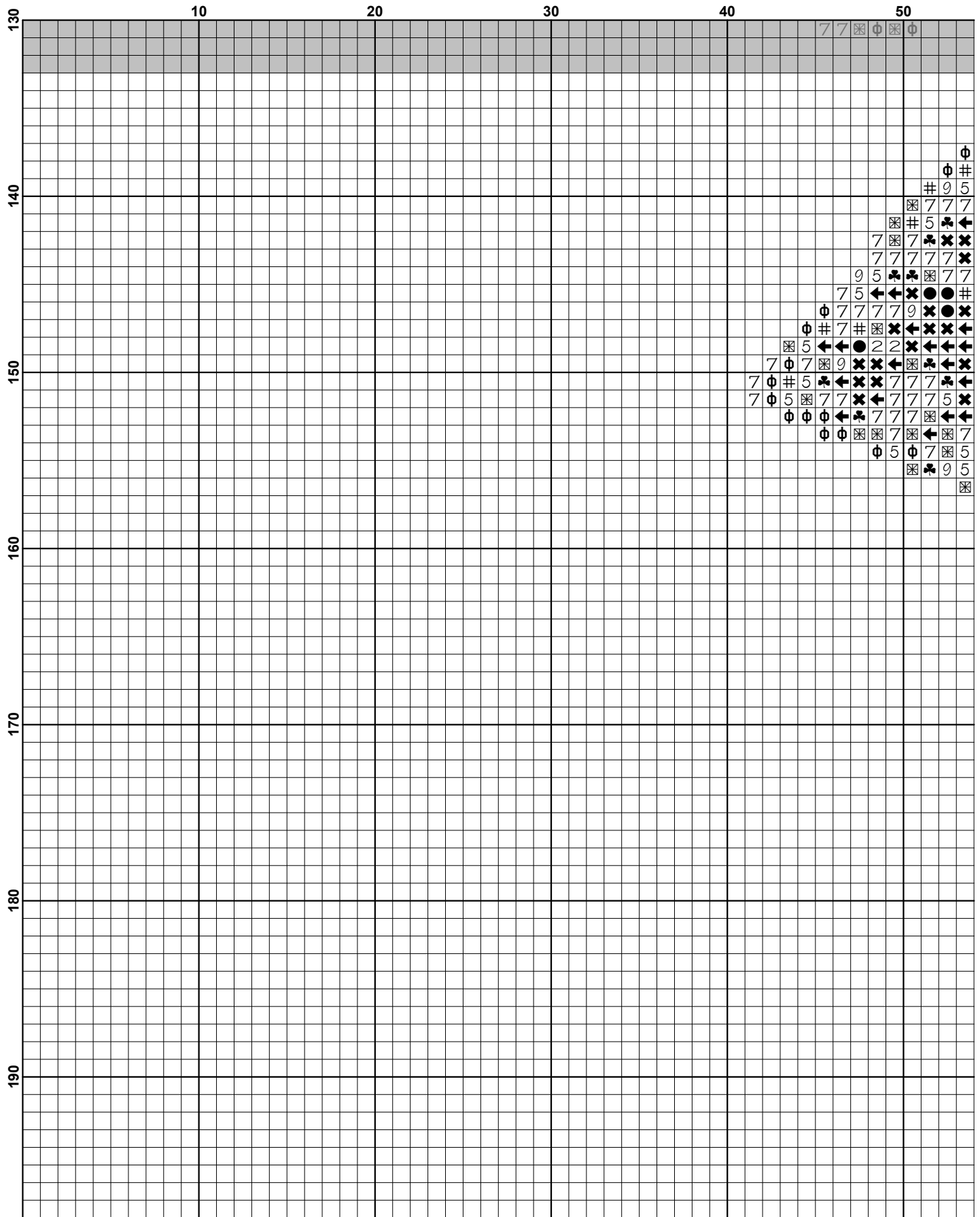


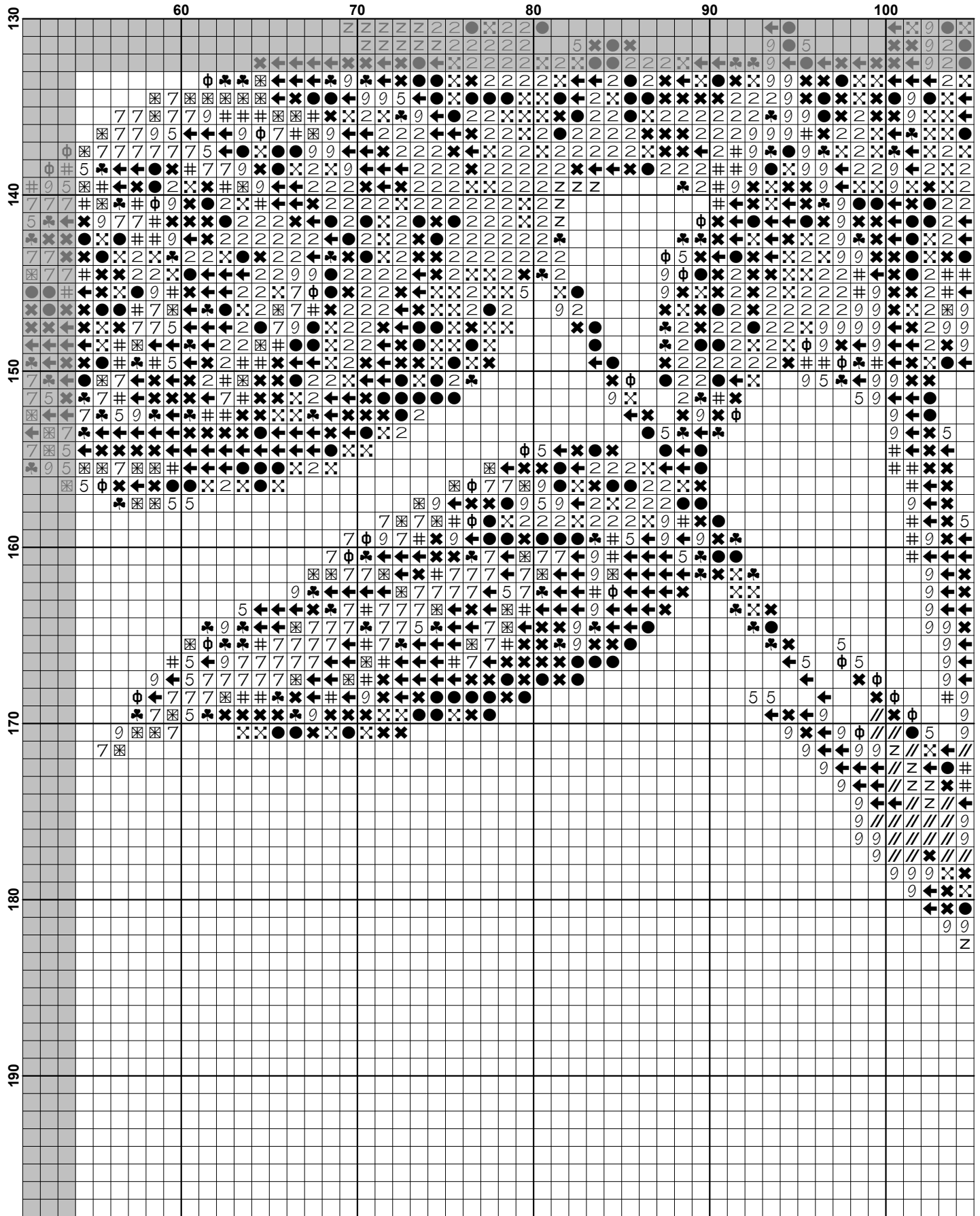


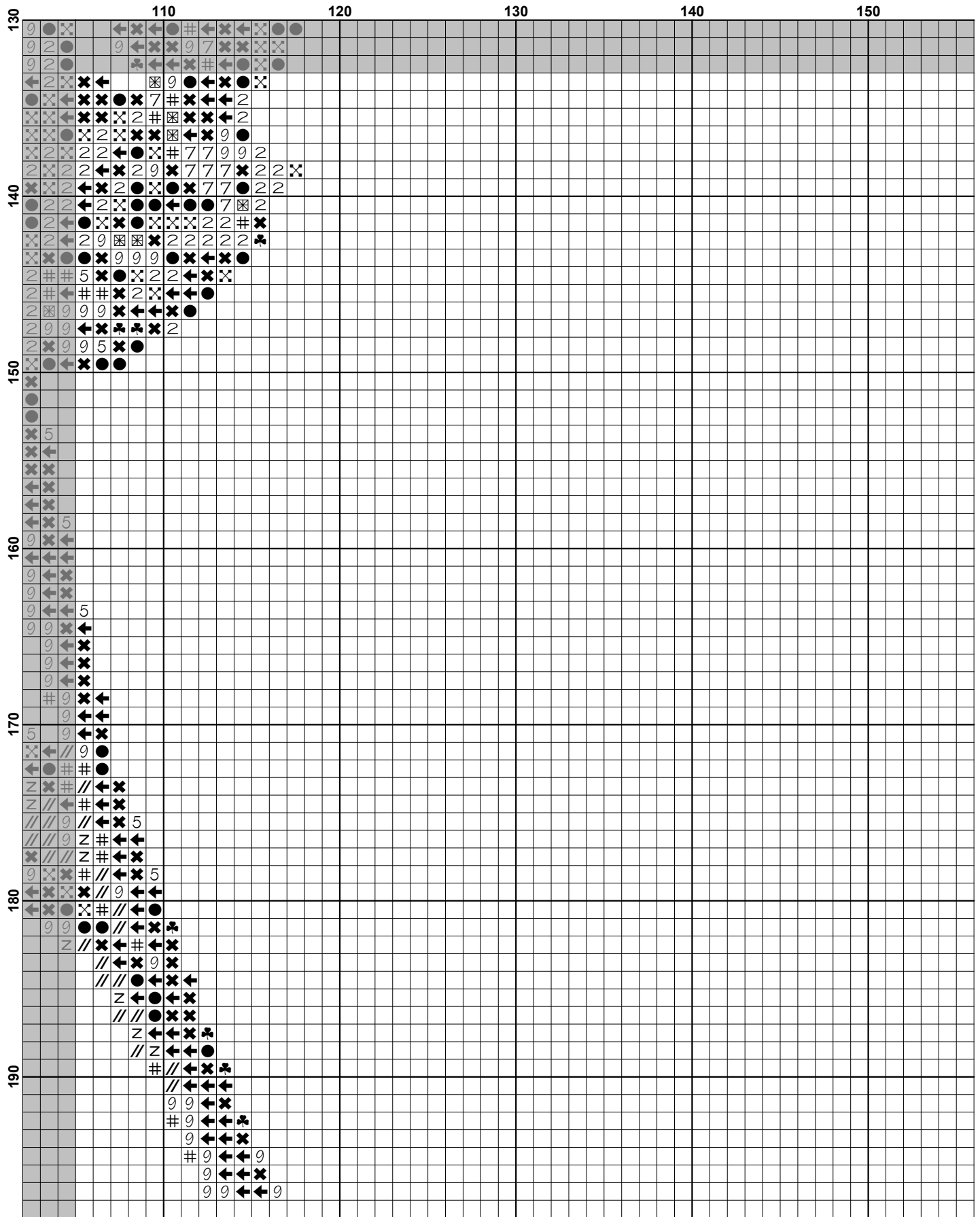


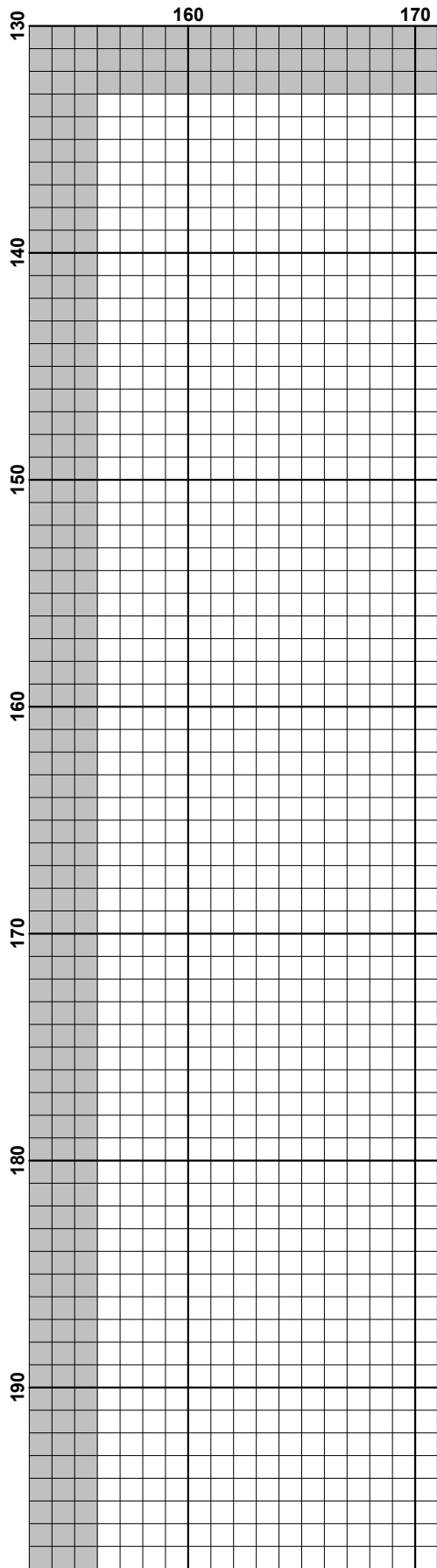












Pattern Name: Pink Floral
Designed By: Image by Kaz - Pixabay
Company: Artecy Cross Stitch
Copyright: Copyright Artecy Cross Stitch. All rights Reserved.
Fabric: Aida 14, White
 169w X 196h Stitches
Size(s): 14 Count, 12w X 14h in
 16 Count, 10-1/2w X 12-1/4h in
 18 Count, 9-3/8w X 10-7/8h in

Floss Used for Full Stitches:

Symbol	Strands	Type	Number	Color
	2	DMC	151	Dusty Rose-VY LT
	2	DMC	165	Moss Green-VY LT
	2	DMC	300	Mahogany-VY DK
	2	DMC	310	Black
	2	DMC	321	Christmas Red
	4	DMC	347	Salmon-VY DK
	2	DMC	349	Coral-DK
	1	DMC	350	Coral-MD
	2	DMC	469	Avocado Green
	9	DMC	470	Avocado Green-LT
	2	DMC	471	Avocado Green-VY LT
	2	DMC	498	Christmas Red-DK
	2	DMC	580	Moss Green-DK
	2	DMC	666	Christmas Red-BRT
	2	DMC	720	Orange Spice-DK
	2	DMC	760	Salmon
	2	DMC	819	Baby Pink-LT
	n	DMC	892	Carnation-MD
	3	DMC	893	Carnation-LT
	*	DMC	894	Carnation-VY LT
	=	DMC	919	Red Copper
	●	DMC	934	Black Avocado Green
	✕	DMC	936	Avocado Green-VY DK
	н	DMC	963	Dusty Rose-UL VY LT
	φ	DMC	3052	Green Gray-MD
	●	DMC	3328	Salmon-DK
	5	DMC	3346	Hunter Green
	7	DMC	3348	Yellow Green-LT
	⊗	DMC	3364	Pine Green
	✕	DMC	3371	Black Brown
	✿	DMC	3705	Melon-DK
	<	DMC	3706	Melon-MD
	≠	DMC	3708	Melon-LT
	☞	DMC	3801	Christmas Red-LT
	//	DMC	3819	Moss Green-LT
	v	DMC	3831	Raspberry-DK
	@	DMC	3832	Raspberry-MD
	β	DMC	3833	Raspberry-LT
	☛	DMC	3865	Winter White

Notes:

The middle of this pattern can be found on page 6 and is 86 stitches across and 99 stitches down. Pattern layout using page numbers in top left.

1 2 3 4
 5 6 7 8
 9 10 11 12

Usage Summary

Strands Per Skein: 6

Skein Length: 313.0 in

Type	Number	Full	Half	Quarter	Petite	Back(in)	Str(in)	Spec(in)	French	Bead	Skein Est.
DMC 151	294	0	0	0	0	0.0	0.0	0.0	0	0	1.000
DMC 165	40	0	0	0	0	0.0	0.0	0.0	0	0	1.000
DMC 300	21	0	0	0	0	0.0	0.0	0.0	0	0	1.000
DMC 310	603	0	0	0	0	0.0	0.0	0.0	0	0	1.000
DMC 321	767	0	0	0	0	0.0	0.0	0.0	0	0	1.000
DMC 347	103	0	0	0	0	0.0	0.0	0.0	0	0	1.000
DMC 349	425	0	0	0	0	0.0	0.0	0.0	0	0	1.000
DMC 350	64	0	0	0	0	0.0	0.0	0.0	0	0	1.000
DMC 469	203	0	0	0	0	0.0	0.0	0.0	0	0	1.000
DMC 470	366	0	0	0	0	0.0	0.0	0.0	0	0	1.000
DMC 471	193	0	0	0	0	0.0	0.0	0.0	0	0	1.000
DMC 498	140	0	0	0	0	0.0	0.0	0.0	0	0	1.000
DMC 580	682	0	0	0	0	0.0	0.0	0.0	0	0	1.000
DMC 666	544	0	0	0	0	0.0	0.0	0.0	0	0	1.000
DMC 720	47	0	0	0	0	0.0	0.0	0.0	0	0	1.000
DMC 760	150	0	0	0	0	0.0	0.0	0.0	0	0	1.000
DMC 819	359	0	0	0	0	0.0	0.0	0.0	0	0	1.000
DMC 892	837	0	0	0	0	0.0	0.0	0.0	0	0	1.000
DMC 893	466	0	0	0	0	0.0	0.0	0.0	0	0	1.000
DMC 894	246	0	0	0	0	0.0	0.0	0.0	0	0	1.000
DMC 919	29	0	0	0	0	0.0	0.0	0.0	0	0	1.000
DMC 934	514	0	0	0	0	0.0	0.0	0.0	0	0	1.000
DMC 936	680	0	0	0	0	0.0	0.0	0.0	0	0	1.000
DMC 963	303	0	0	0	0	0.0	0.0	0.0	0	0	1.000
DMC 3052	66	0	0	0	0	0.0	0.0	0.0	0	0	1.000
DMC 3328	86	0	0	0	0	0.0	0.0	0.0	0	0	1.000
DMC 3346	66	0	0	0	0	0.0	0.0	0.0	0	0	1.000
DMC 3348	291	0	0	0	0	0.0	0.0	0.0	0	0	1.000
DMC 3364	137	0	0	0	0	0.0	0.0	0.0	0	0	1.000
DMC 3371	341	0	0	0	0	0.0	0.0	0.0	0	0	1.000
DMC 3705	355	0	0	0	0	0.0	0.0	0.0	0	0	1.000
DMC 3706	435	0	0	0	0	0.0	0.0	0.0	0	0	1.000
DMC 3708	311	0	0	0	0	0.0	0.0	0.0	0	0	1.000
DMC 3801	1435	0	0	0	0	0.0	0.0	0.0	0	0	1.000
DMC 3819	101	0	0	0	0	0.0	0.0	0.0	0	0	1.000
DMC 3831	65	0	0	0	0	0.0	0.0	0.0	0	0	1.000
DMC 3832	78	0	0	0	0	0.0	0.0	0.0	0	0	1.000
DMC 3833	164	0	0	0	0	0.0	0.0	0.0	0	0	1.000
DMC 3865	420	0	0	0	0	0.0	0.0	0.0	0	0	1.000