

Portrait of an Unknown Woman

Adapted from Artwork by Ivan Kramskoi



Cross Stitch Design by Tereena Clarke.

Completed Size = 300w x 224h Stitches

14 Count, 21.5w x 16h inches (55cm x 41cm)

16 Count, 19w x 14h inches (48cm x 36cm)

18 Count, 17w x 12.5h inches (43cm x 32cm)

Uses 74 DMC cotton colours. Only full cross stitches are used in this pattern.

Pattern Instructions

* This pattern can be worked on any fabric type, colour or count you prefer. To work out the size of the finished article, take the number of stitches wide and high and divide it by the count of your fabric (e.g. 14,16,18 count aida etc) to get the size in inches. Times it by 2.54 to get centimetres. We have the sizes in inches shown on the previous page. Also leave at least a few inches of fabric around each side of the design to assist in framing. The higher the fabric count the smaller the completed project will be.

* To put the pattern together look in the top and bottom corners. The page numbers in brackets show which page number it joins up to. Page 1 always starts at the top left hand side of the pattern. Our pages also have a shaded grey section. This indicates a 3 row overlap from adjoining pages to assist with reading the pattern. PLEASE DO NOT RESTITCH THIS AREA.

* You should begin at the centre of the pattern. To find the centre of the pattern it is just a matter of laying the pattern out and locating the arrows at the top and left hand side of the patterns, they are determined by dividing the stitch numbers wide and high in half. Where the two points meet in the middle, that is the centre.

* If you need more assistance to find the middle of your pattern or the page layout, please see the notes section on the colour symbol chart. The easiest way to stitch this pattern, as it has multiple pages, is to stitch one page at a time.

* We suggest using two strands of floss for each stitch and one strand for backstitching if the pattern calls for it.

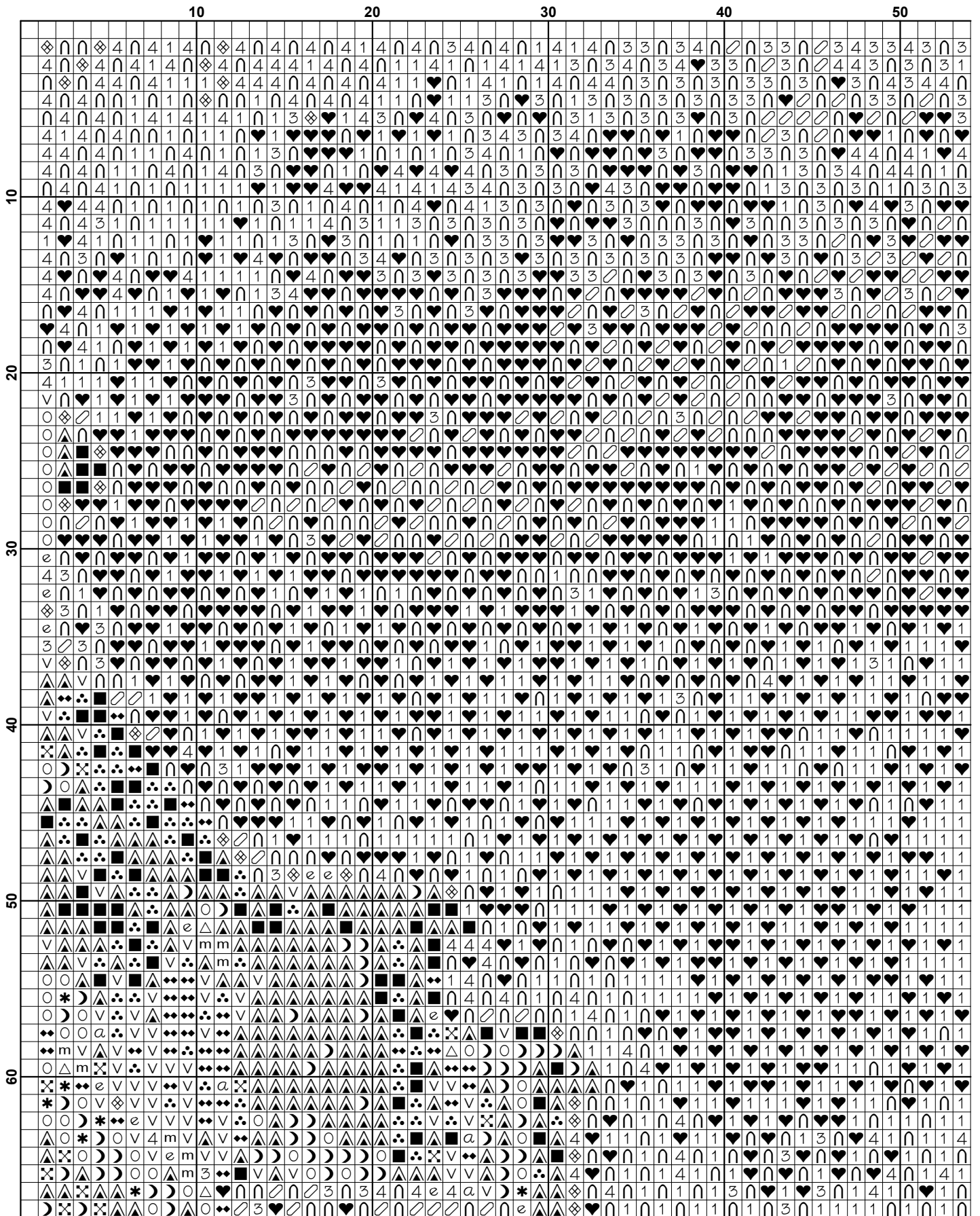
We hope you enjoy stitching our pattern.

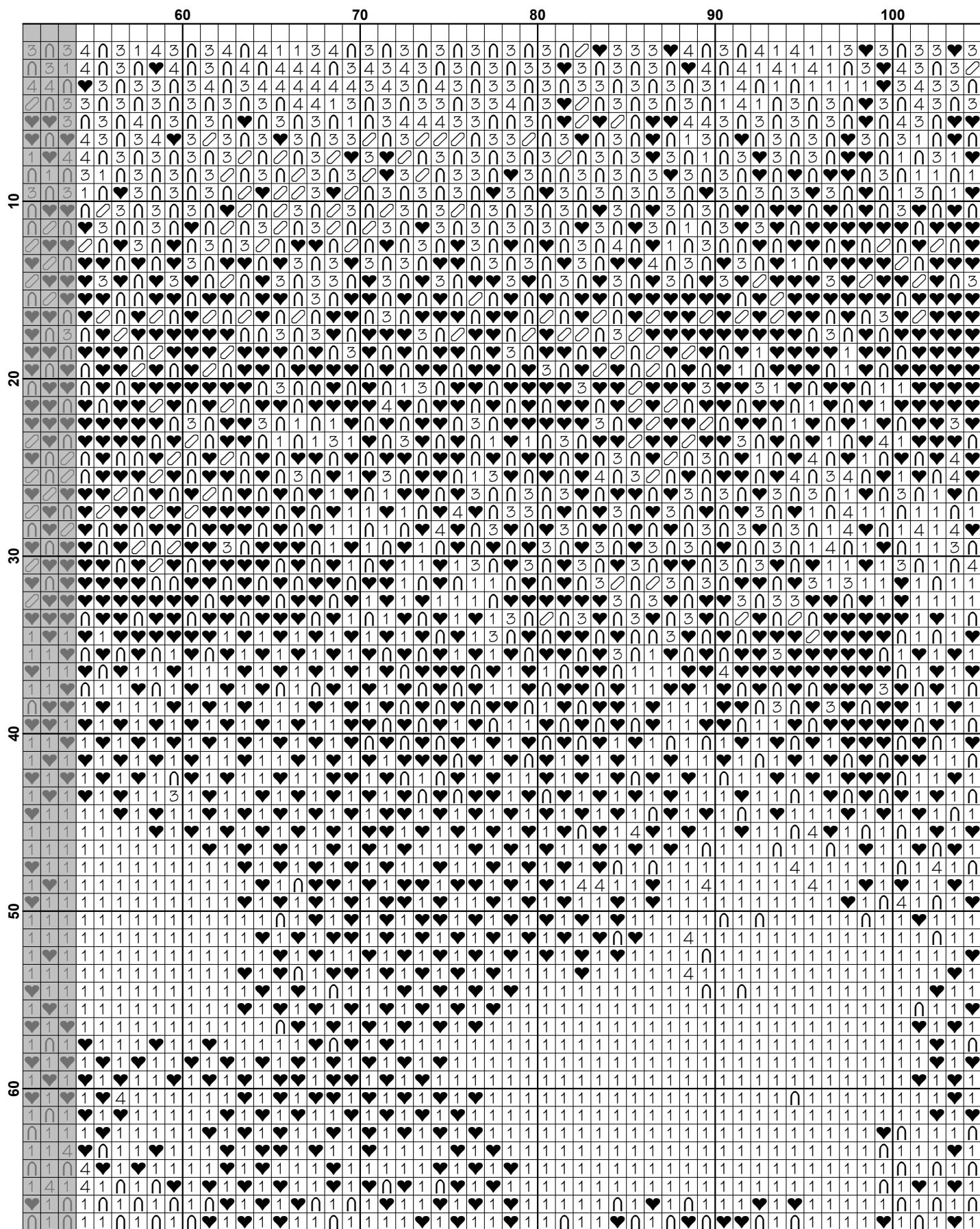
Thanks and Best Wishes
Tereena Clarke

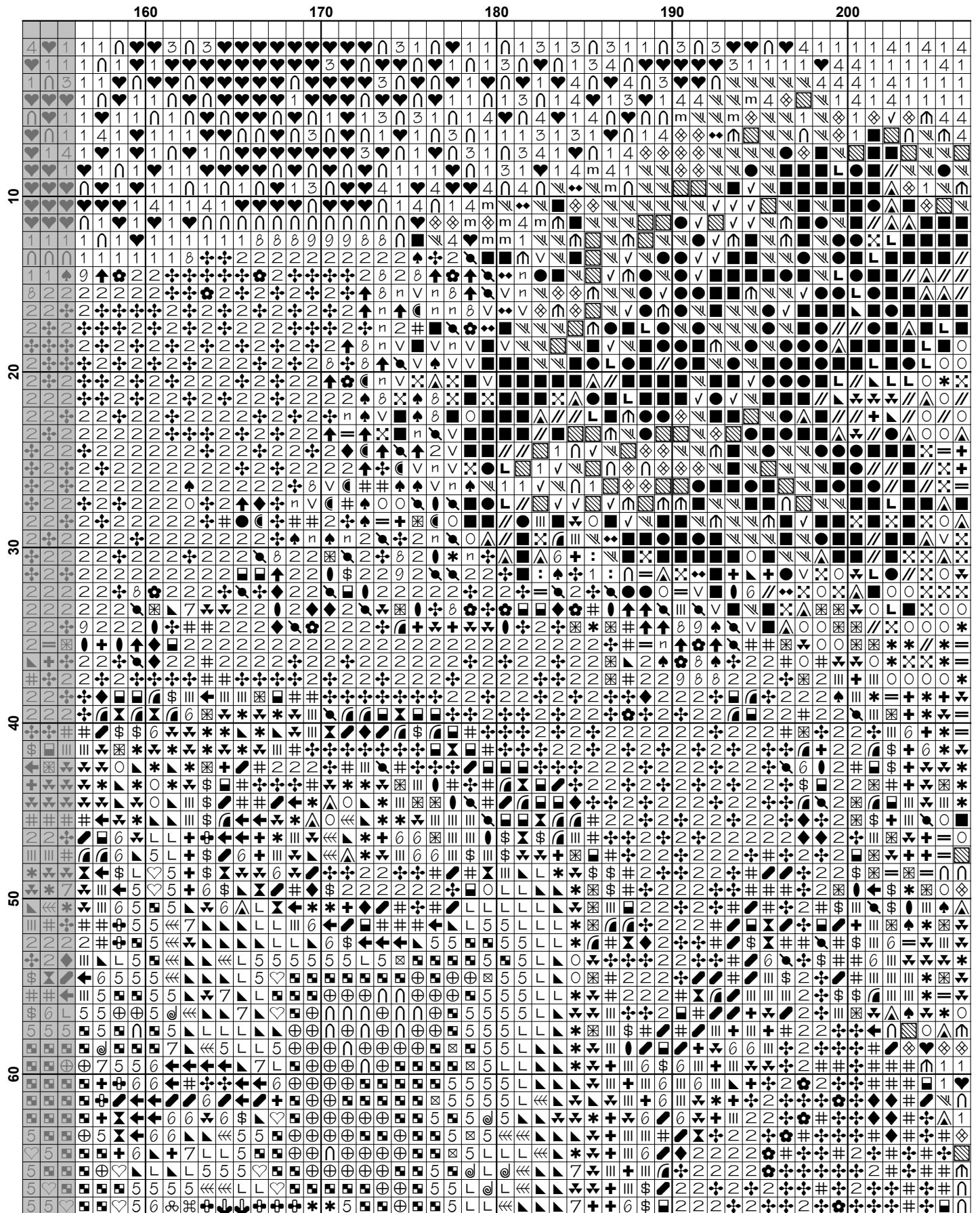
Artecy Cross Stitch
Po Box 3474
Tuggerah, NSW 2259
Australia

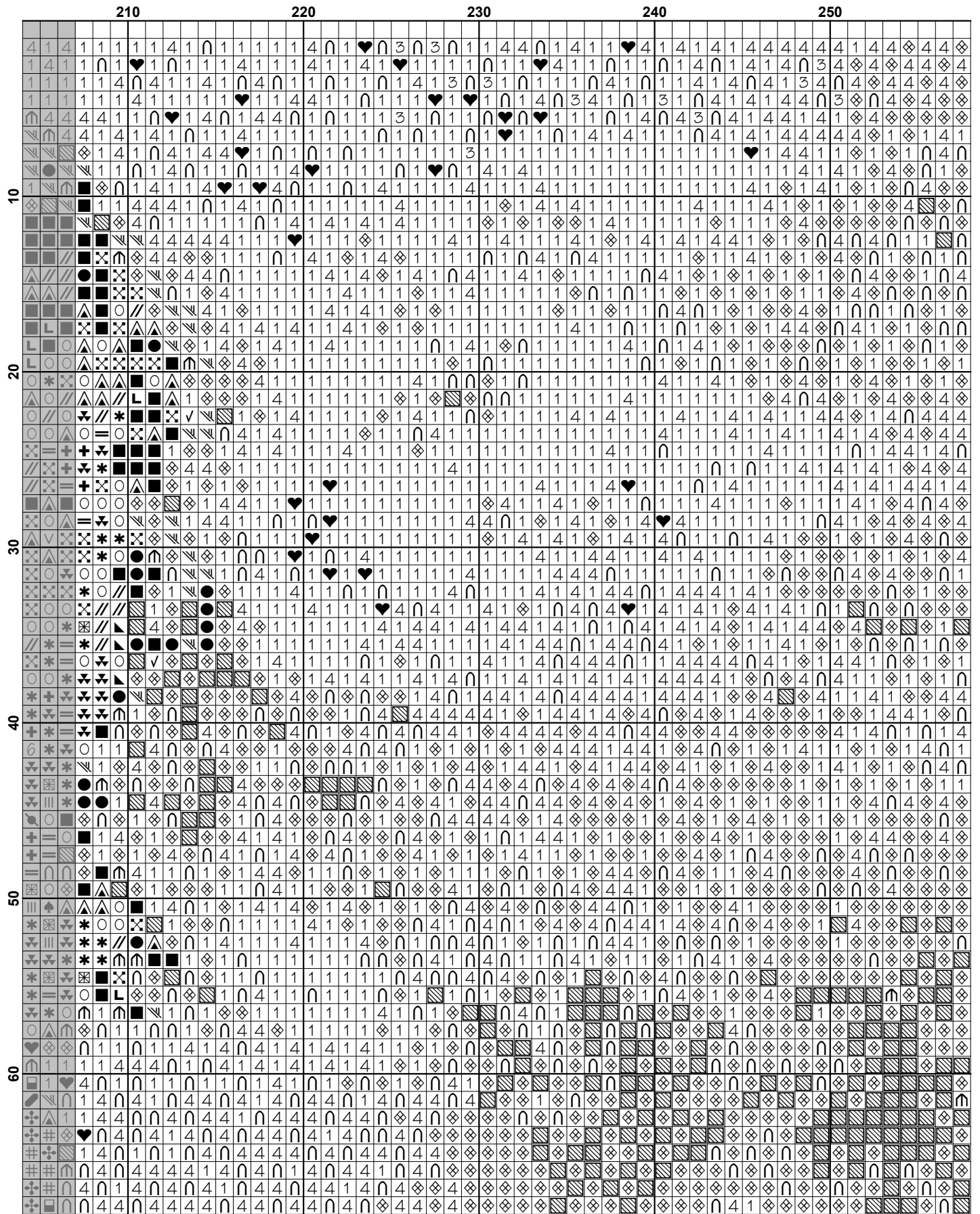
Websites: www.artecy.com and www.artecyshop.com
Email: artecy@artecy.com or stitch@artecyshop.com

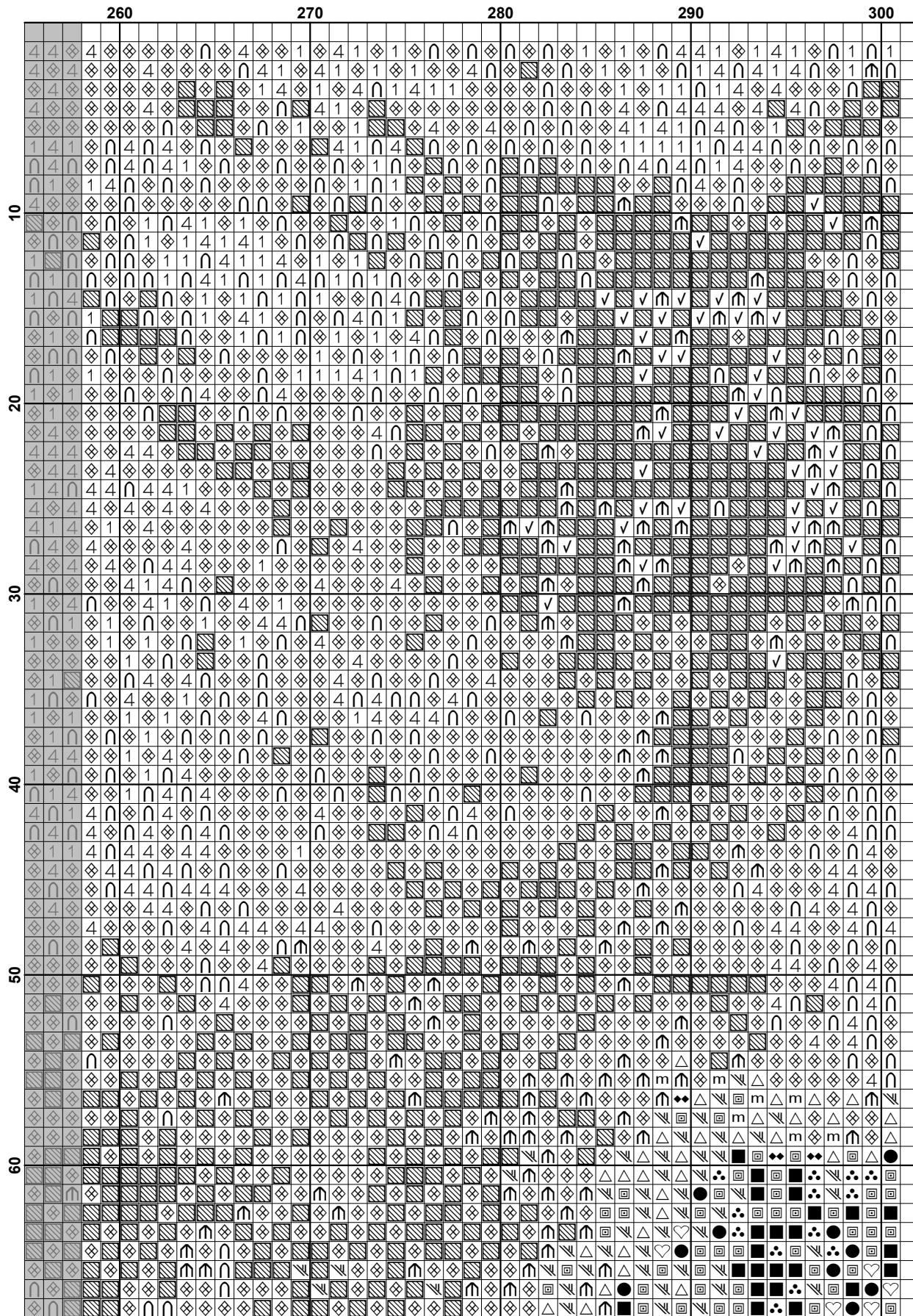
*Patterns are strictly for personal use only. It is against our copyright to make kits for sale from our designs or to sell, copy or redistribute this pattern in any form. You may not upload our patterns to any internet forums or groups or any other website. You may make 1 copy of this pattern for a working copy for your own personal use if needed.

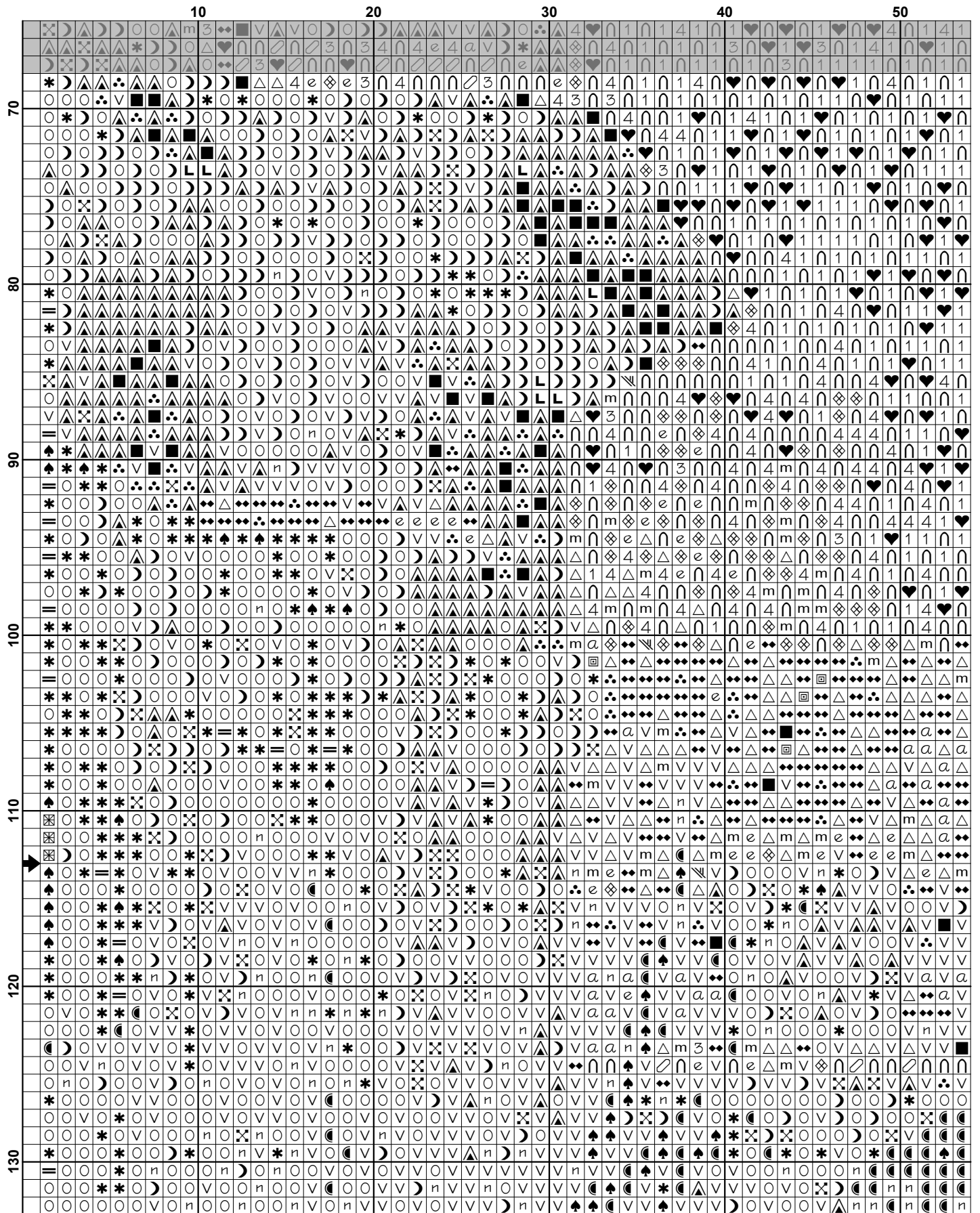


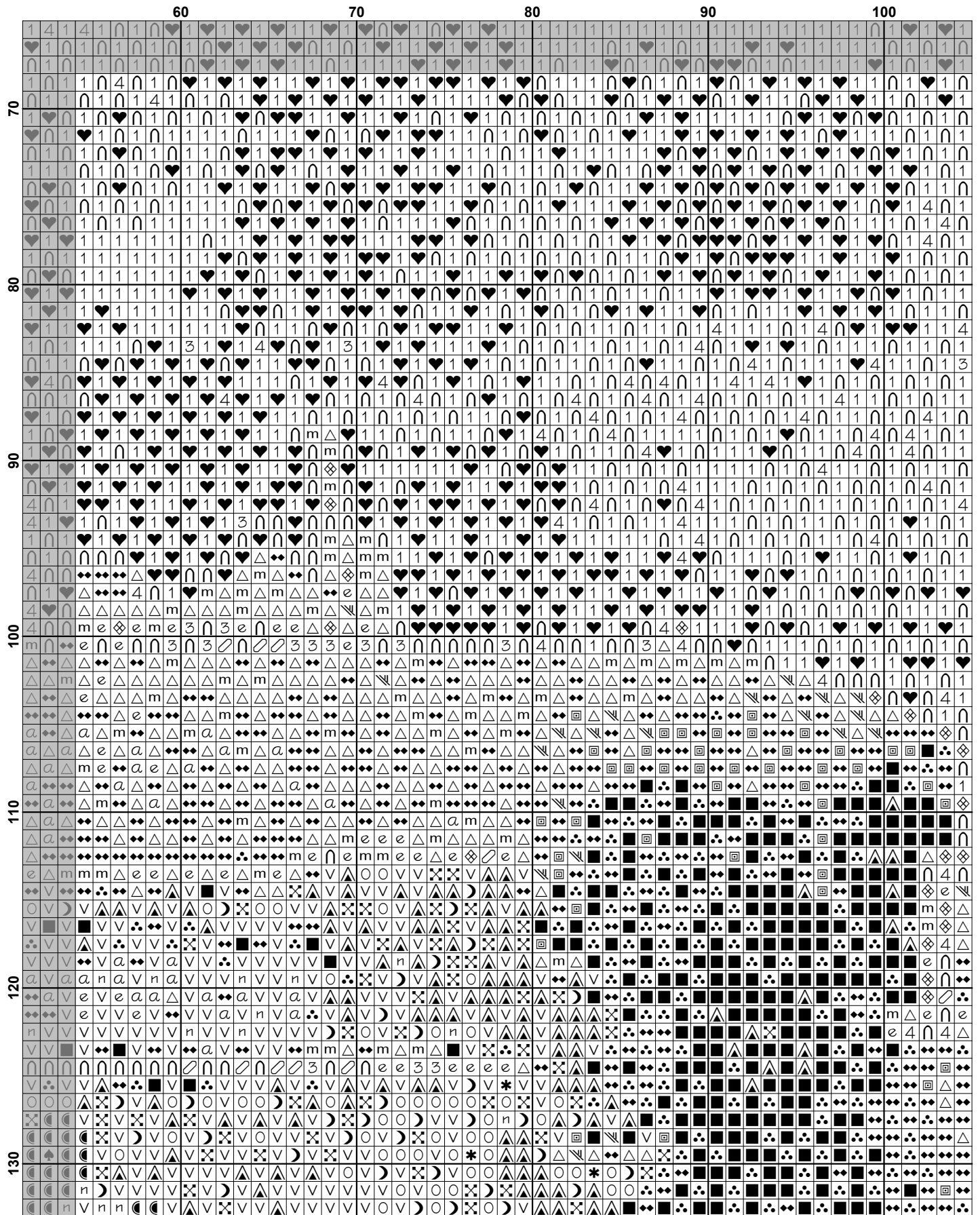


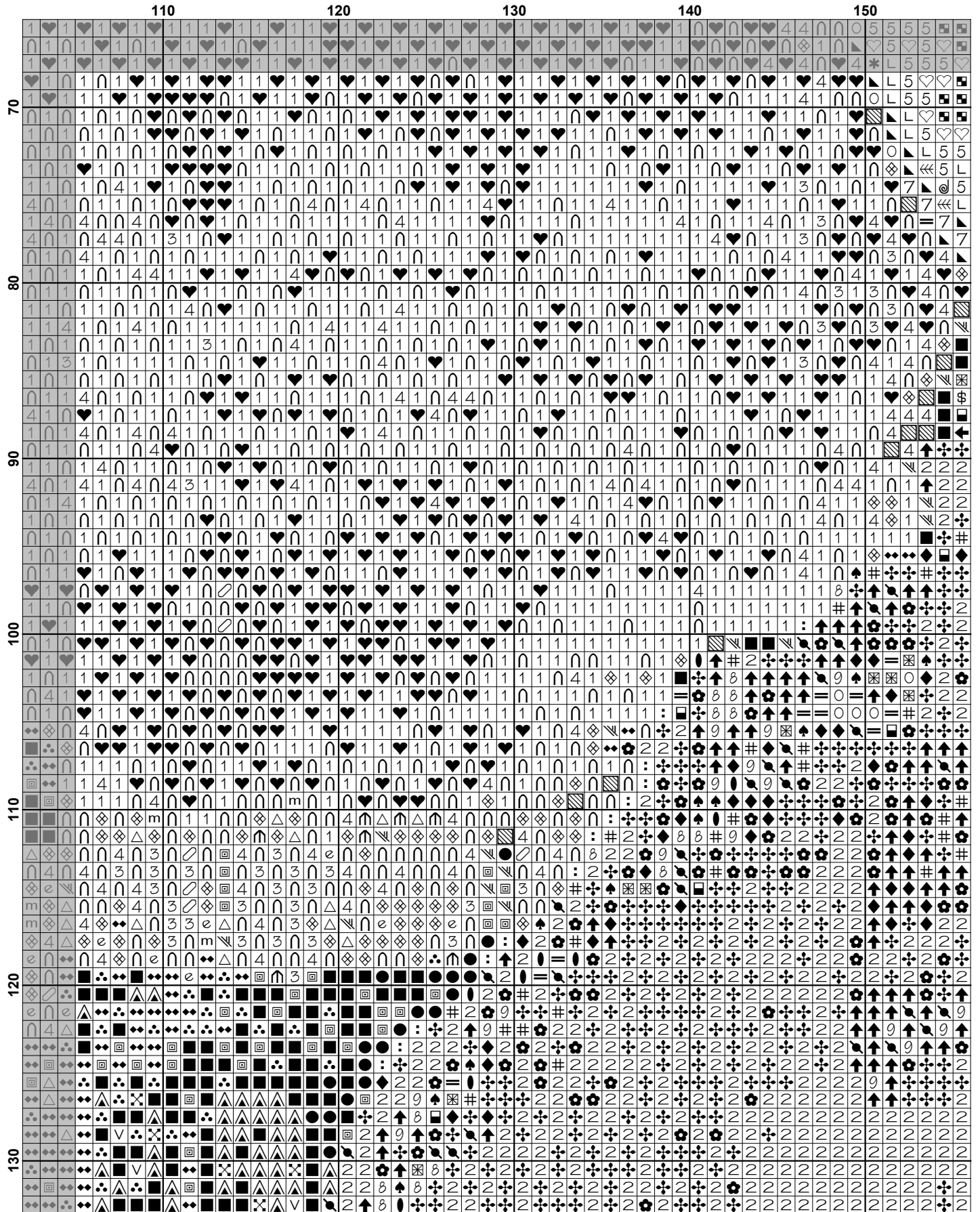


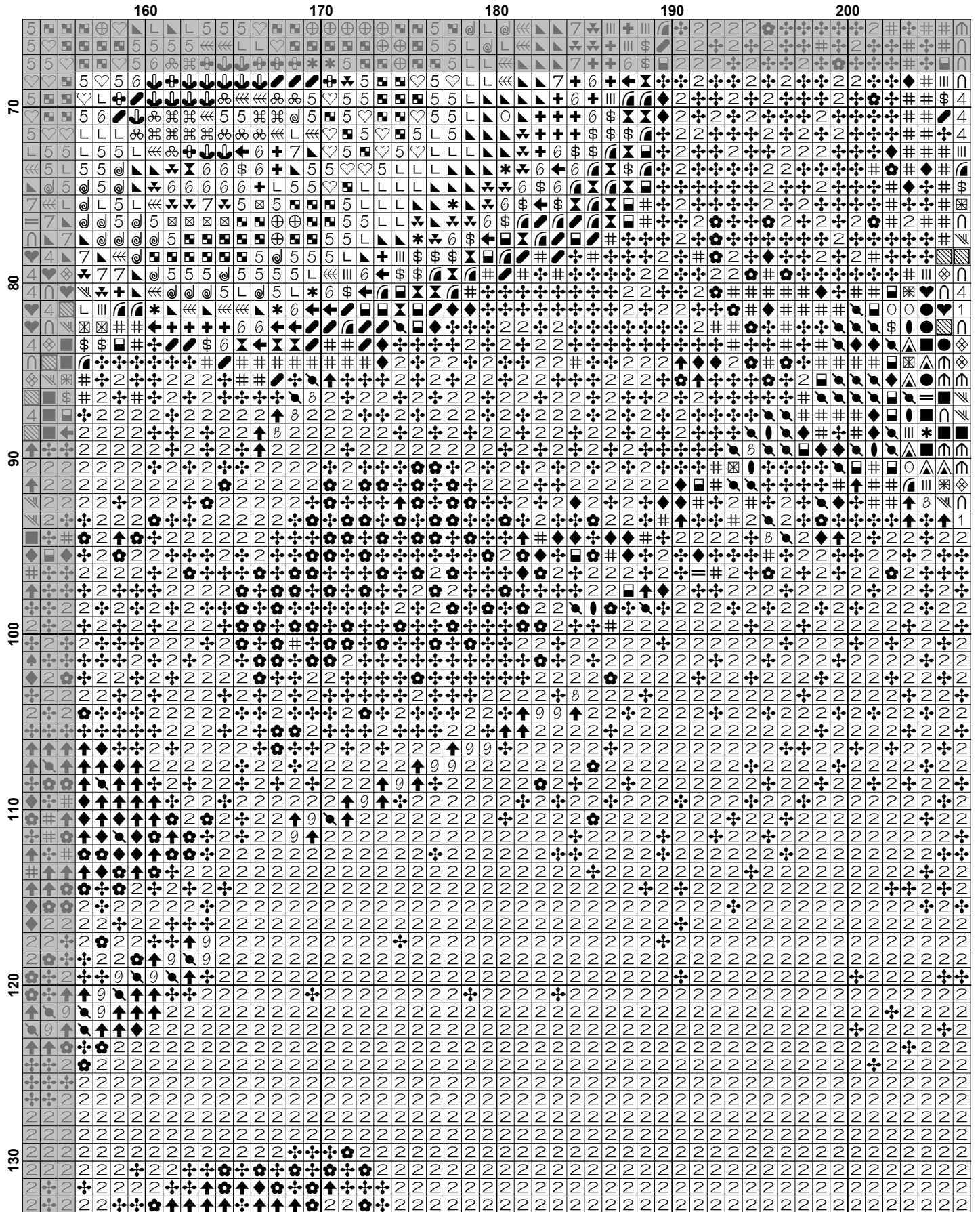


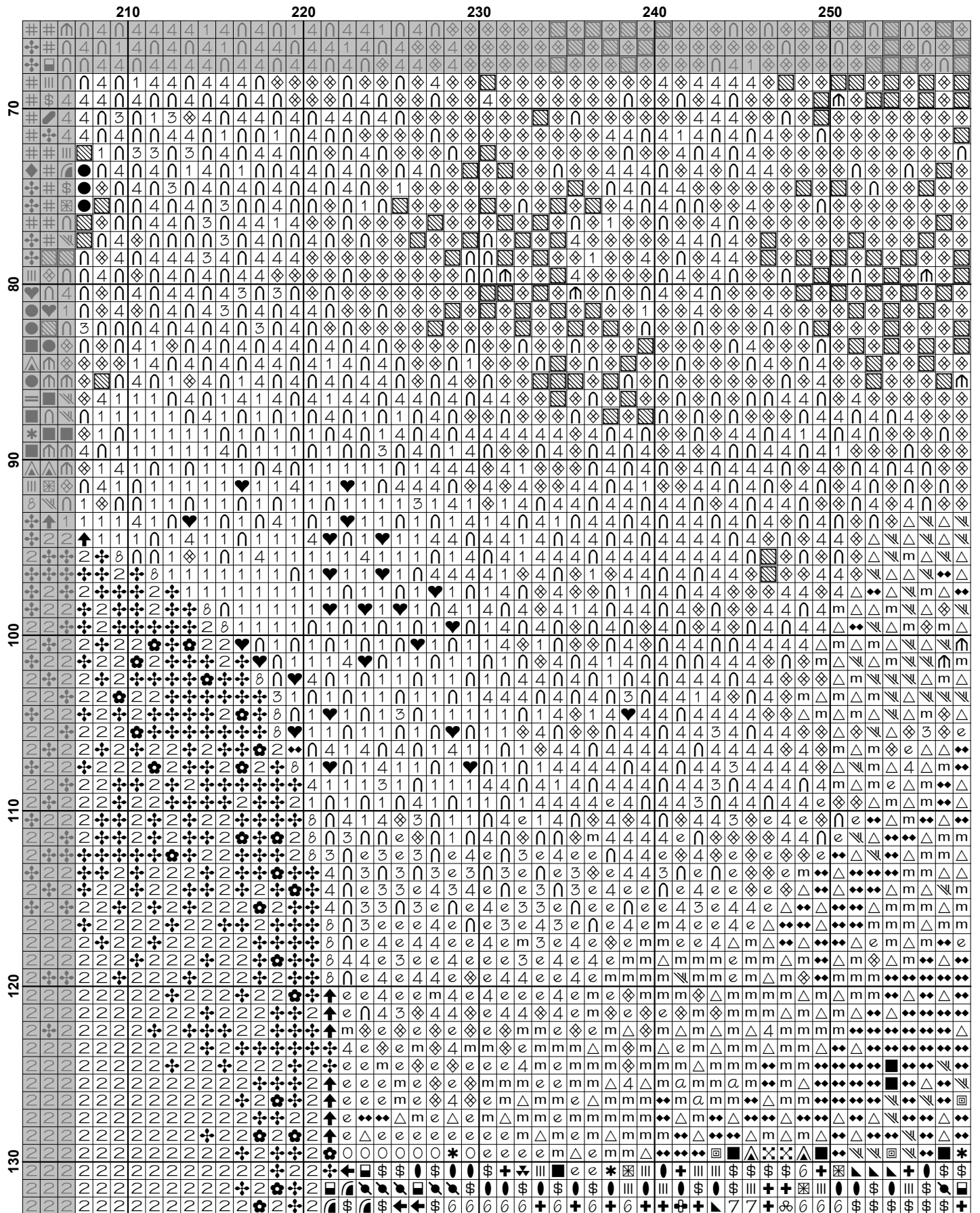


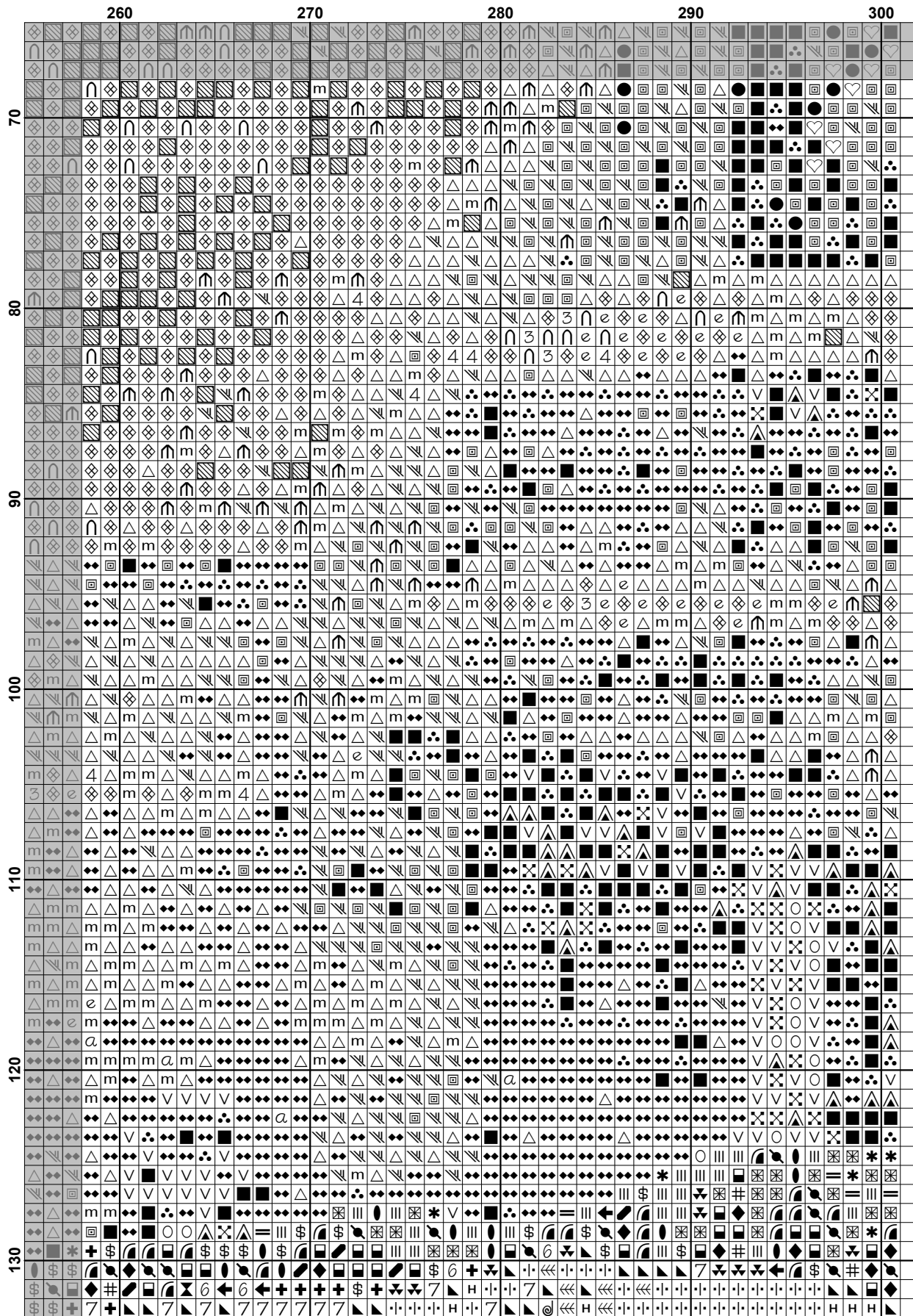


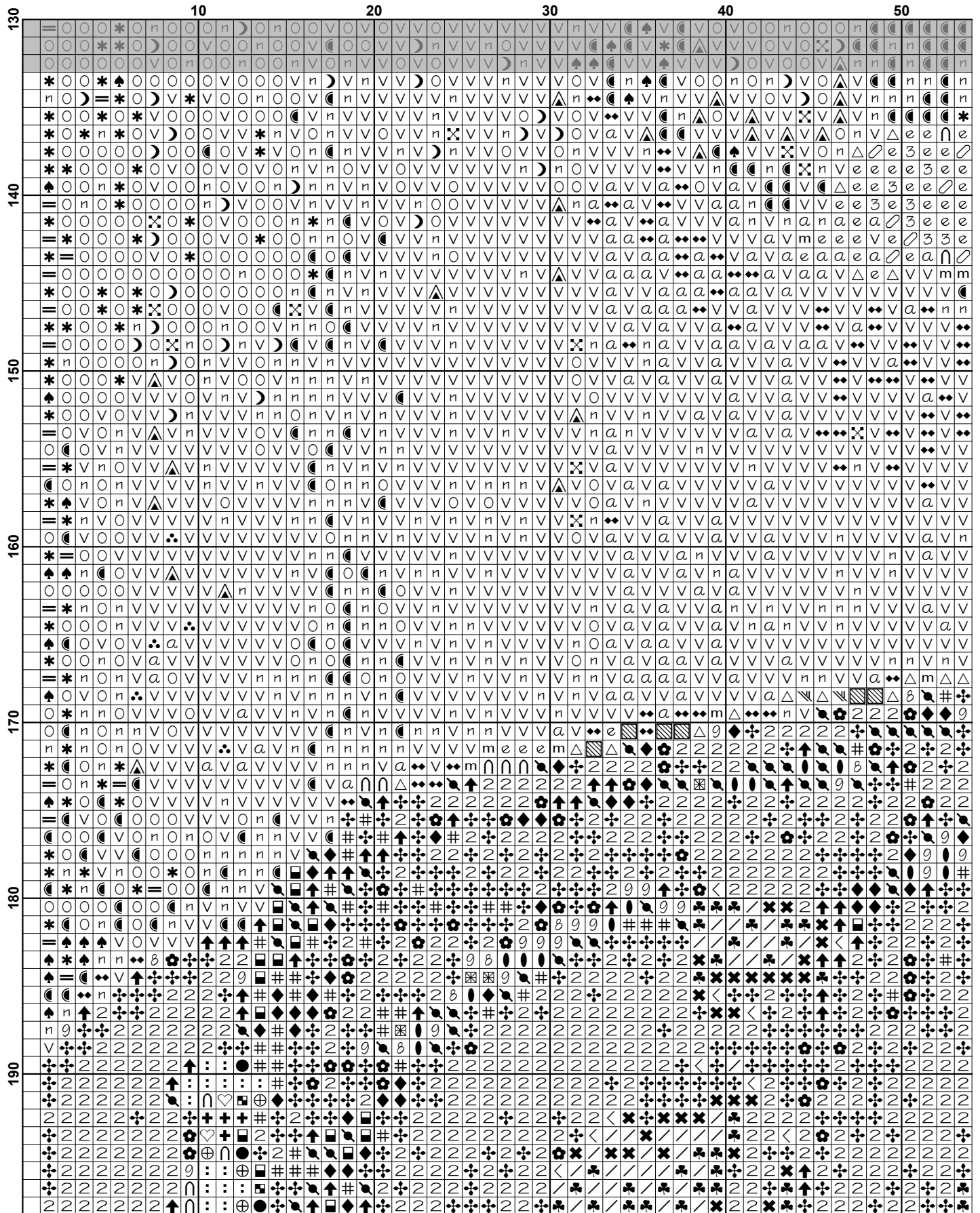


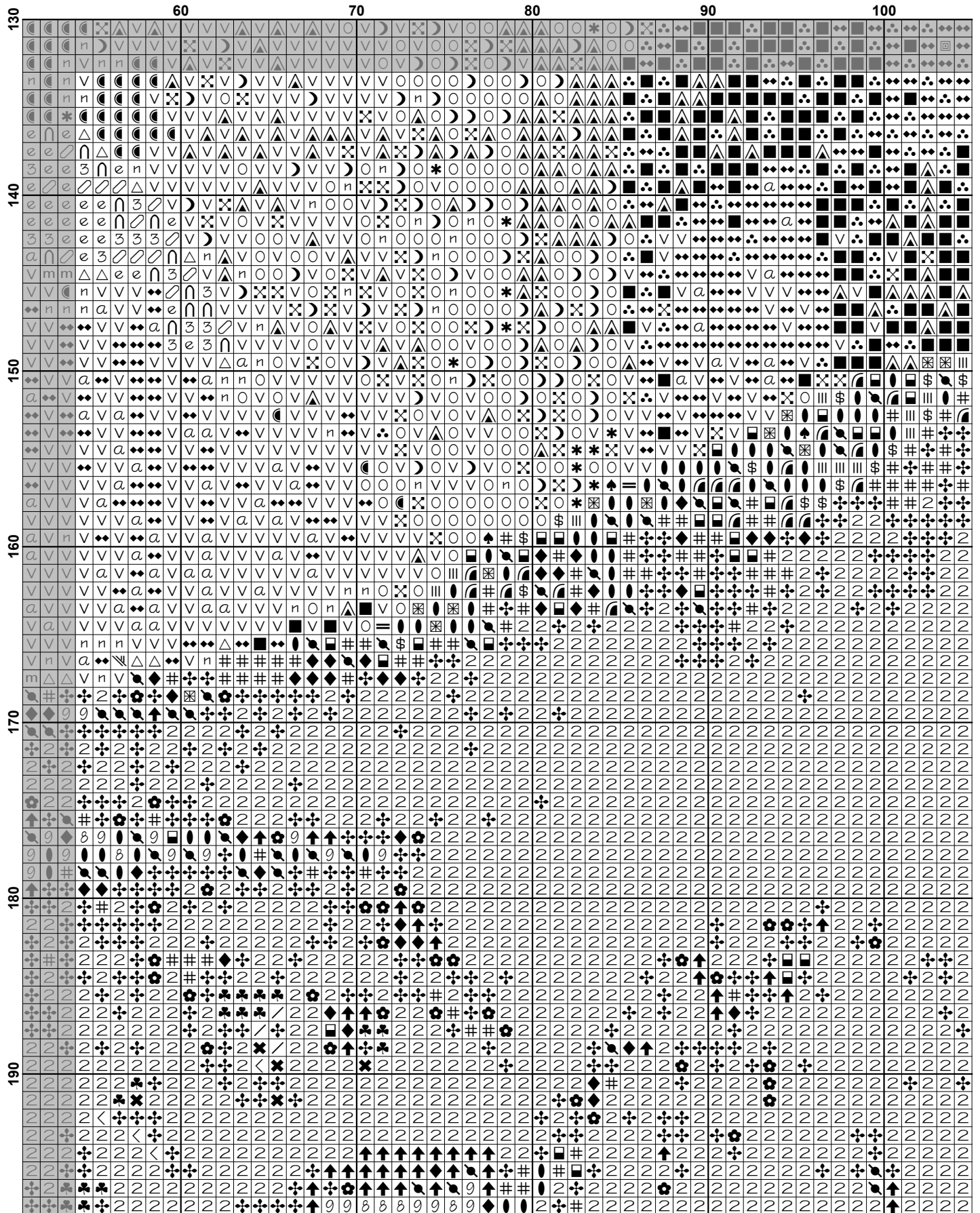


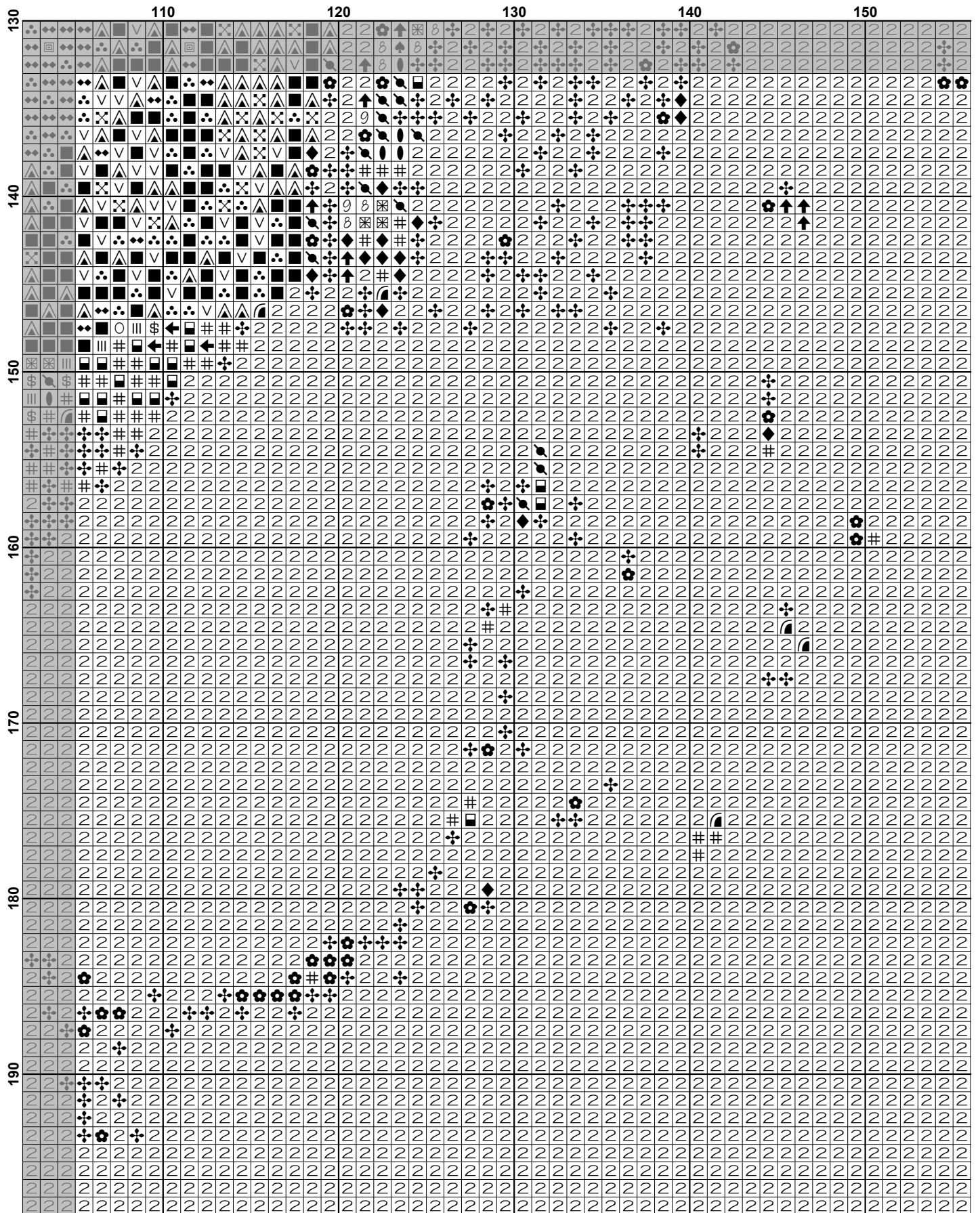


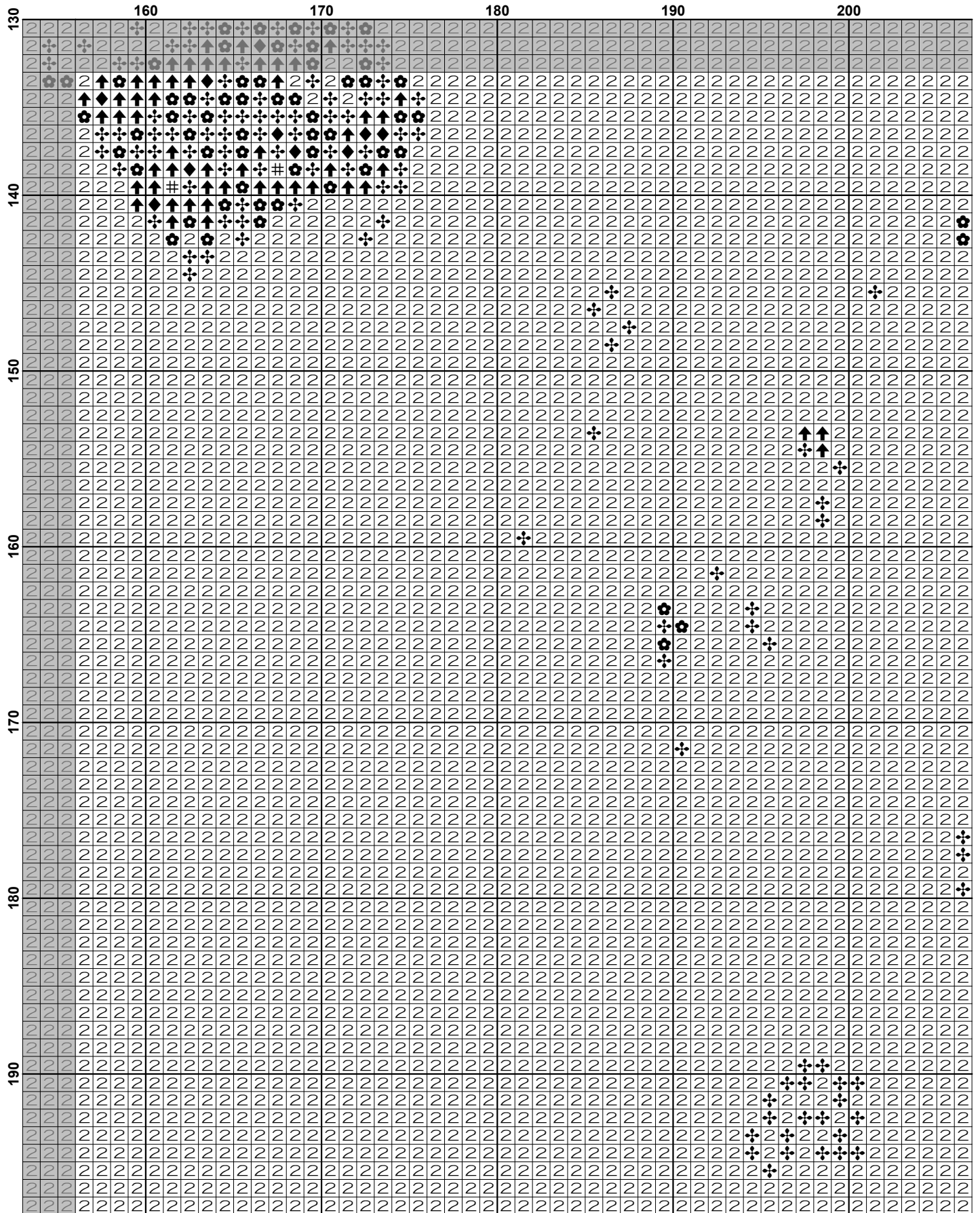


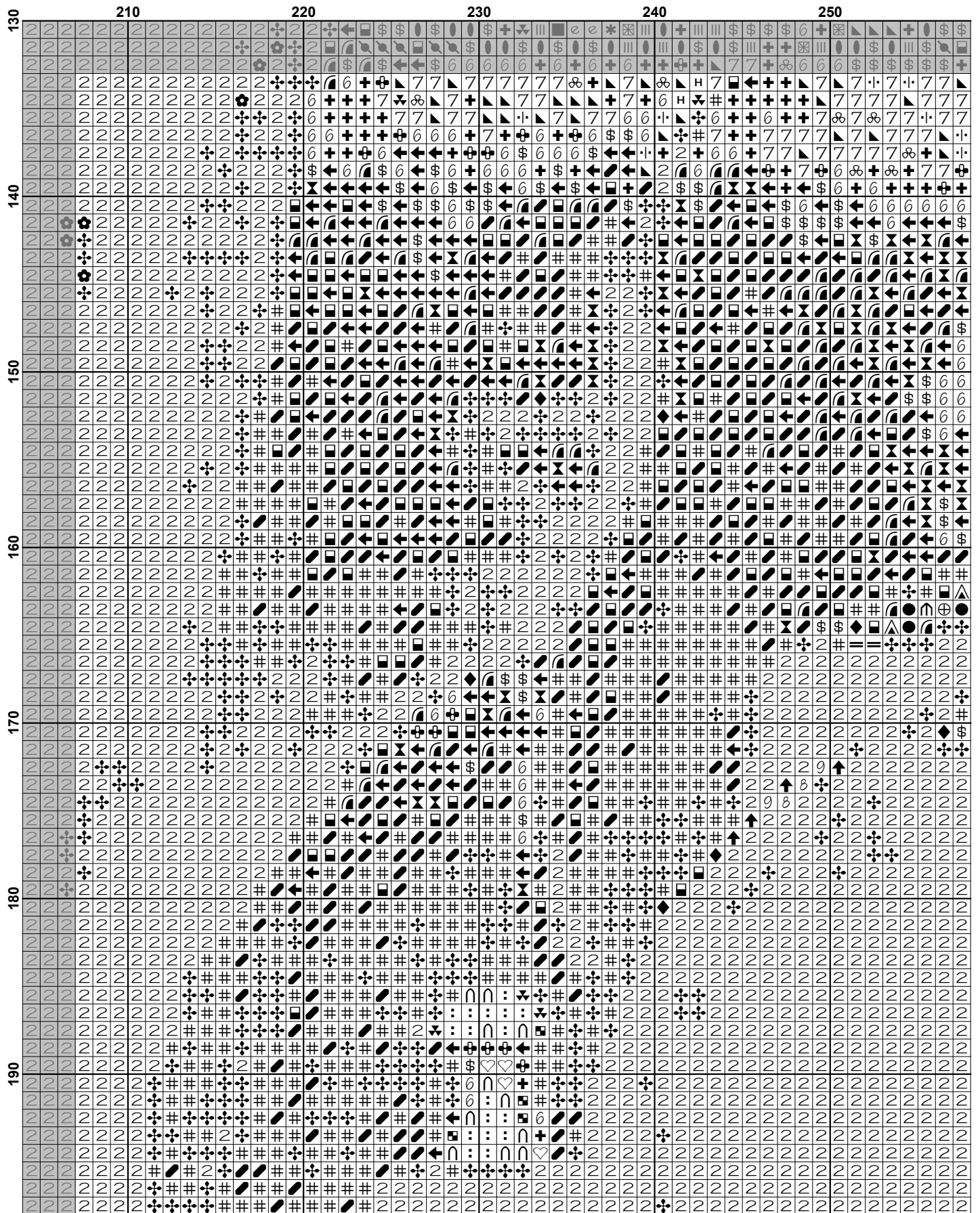


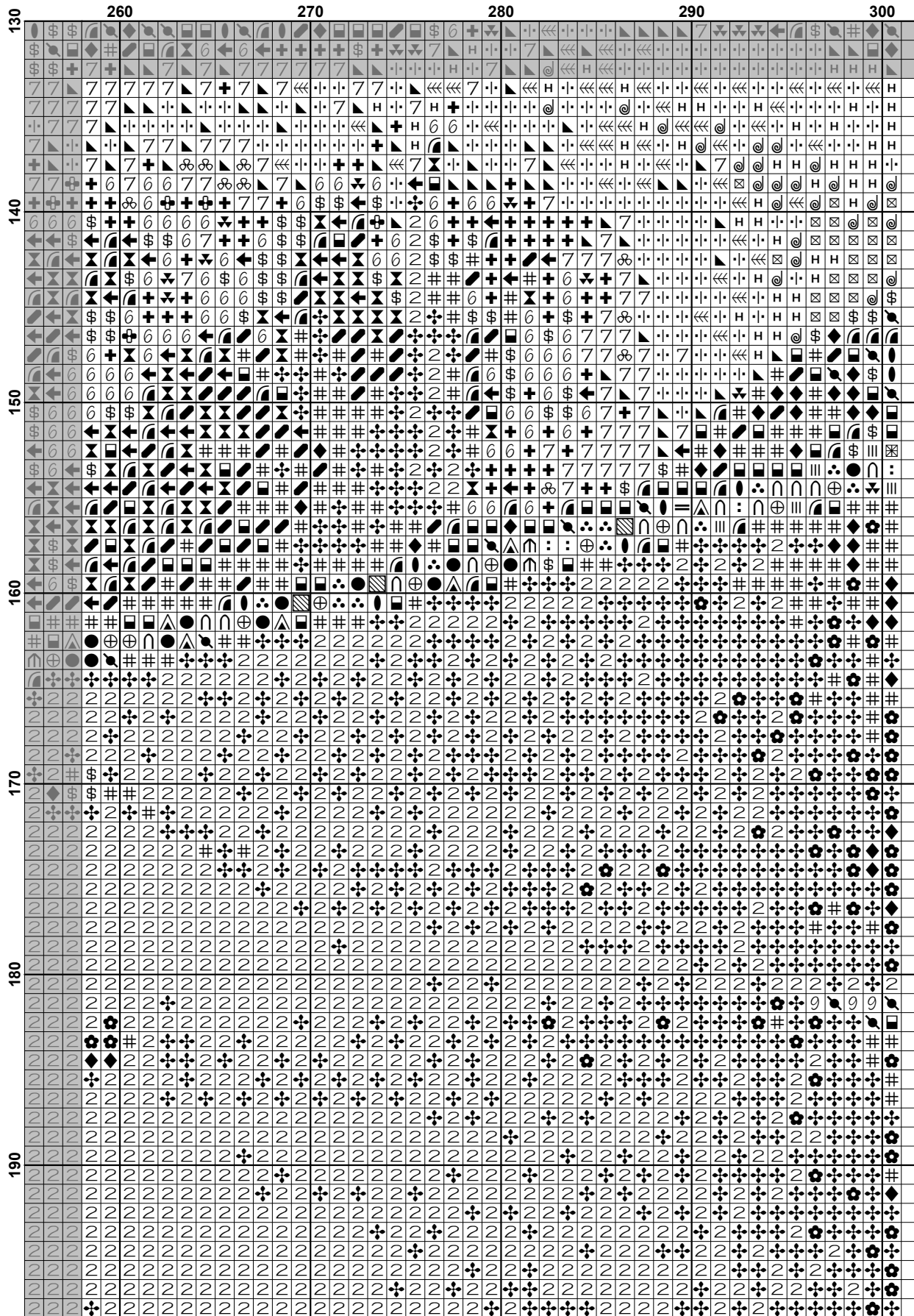


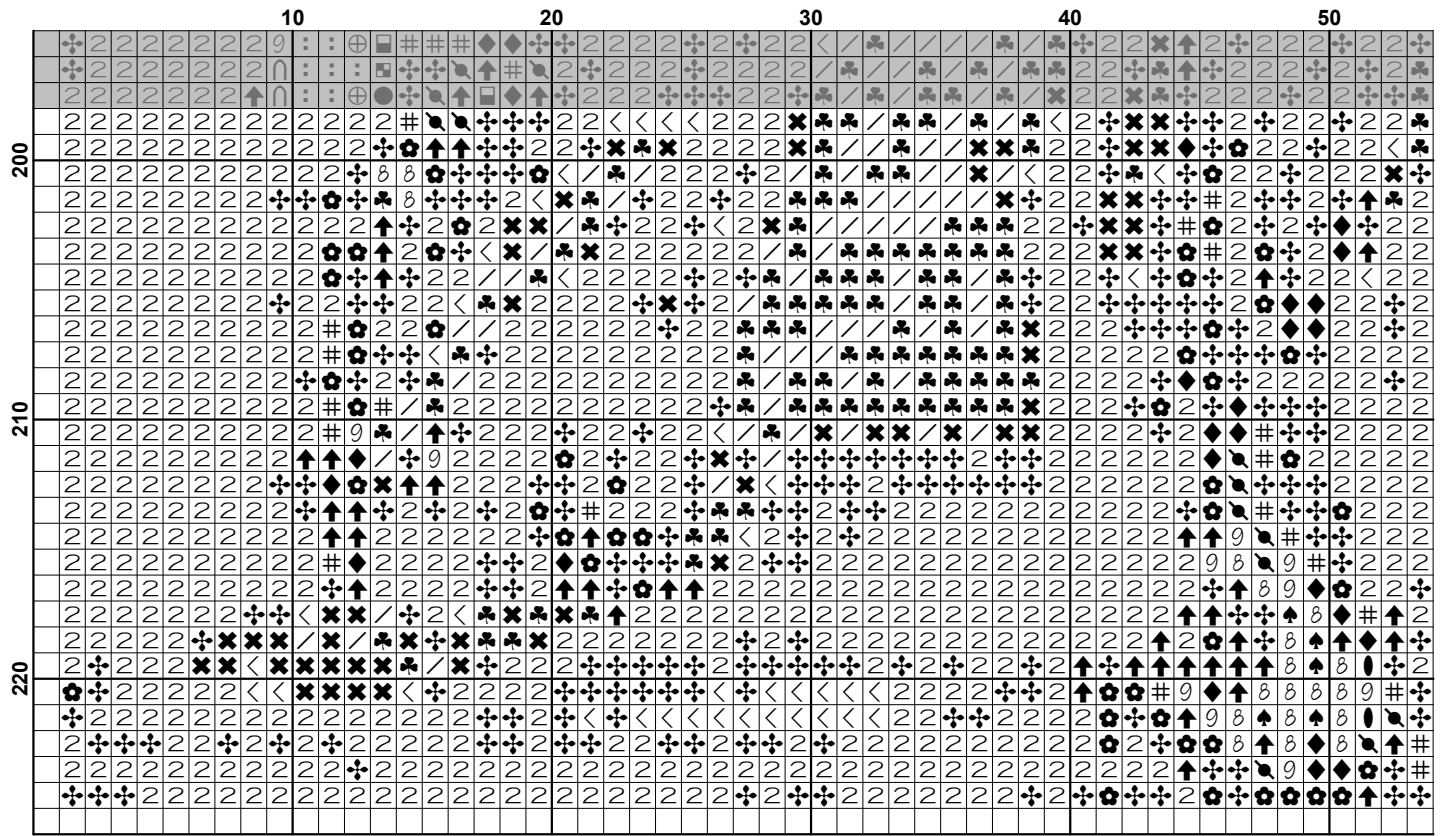


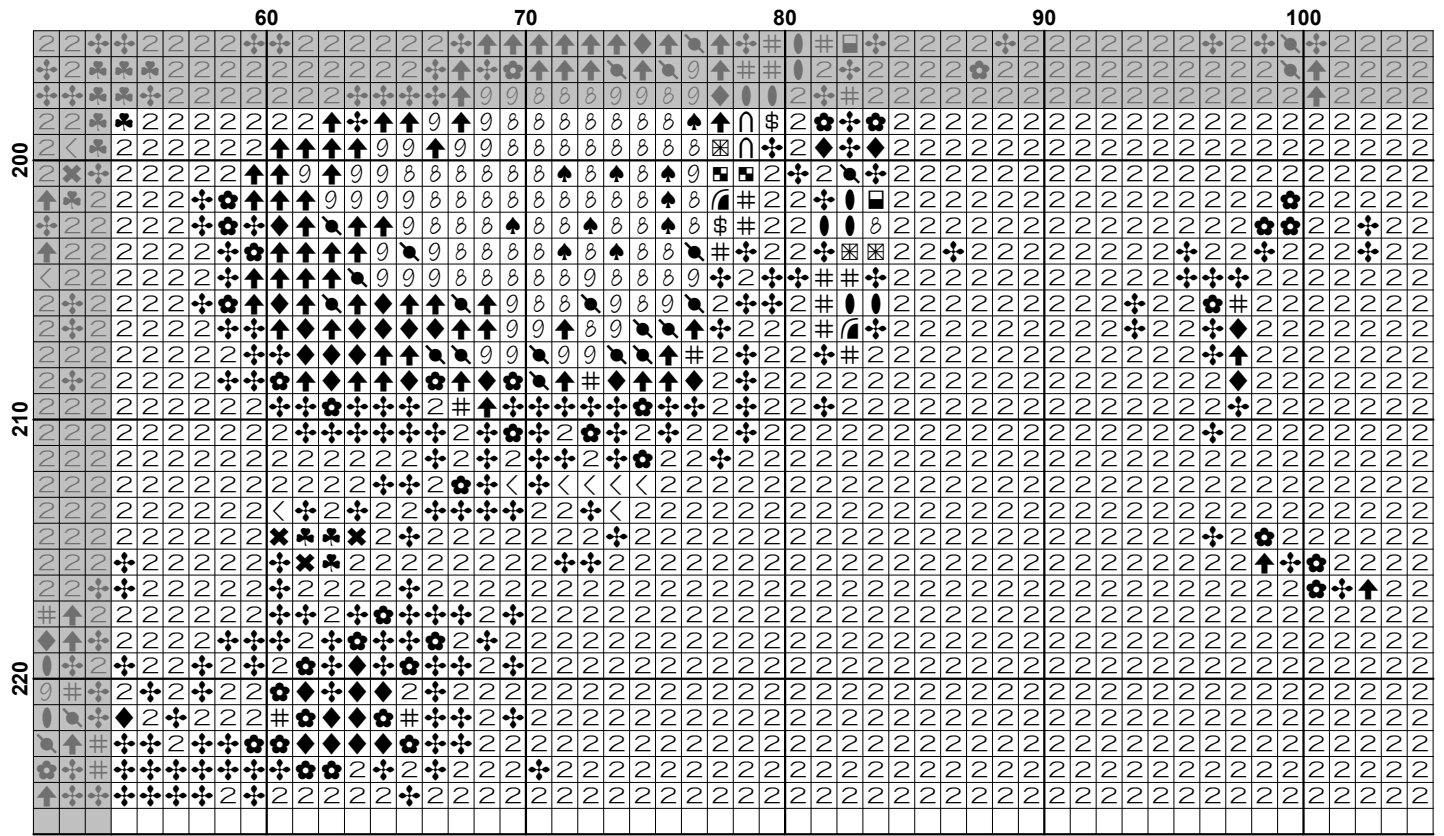


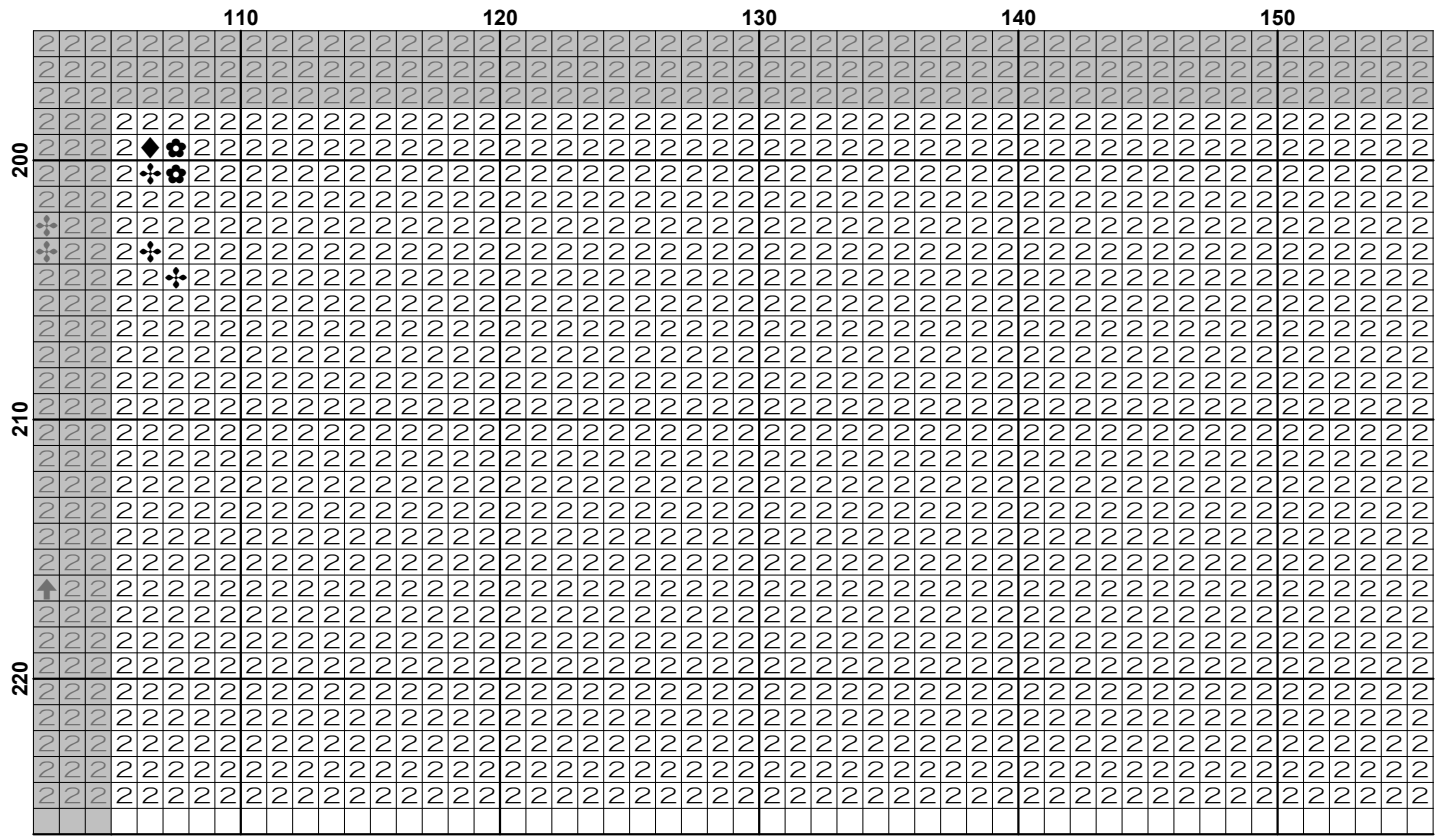


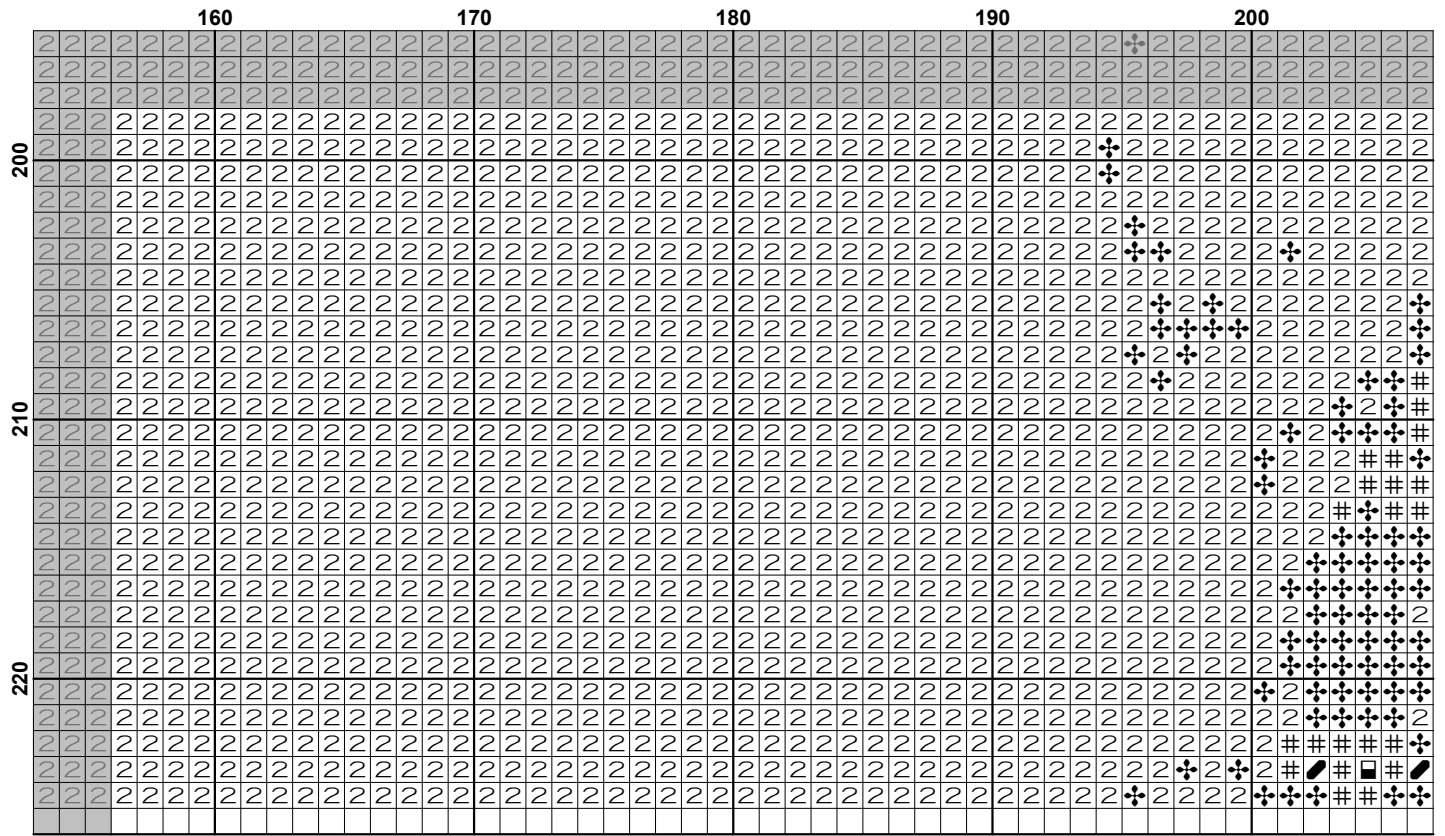


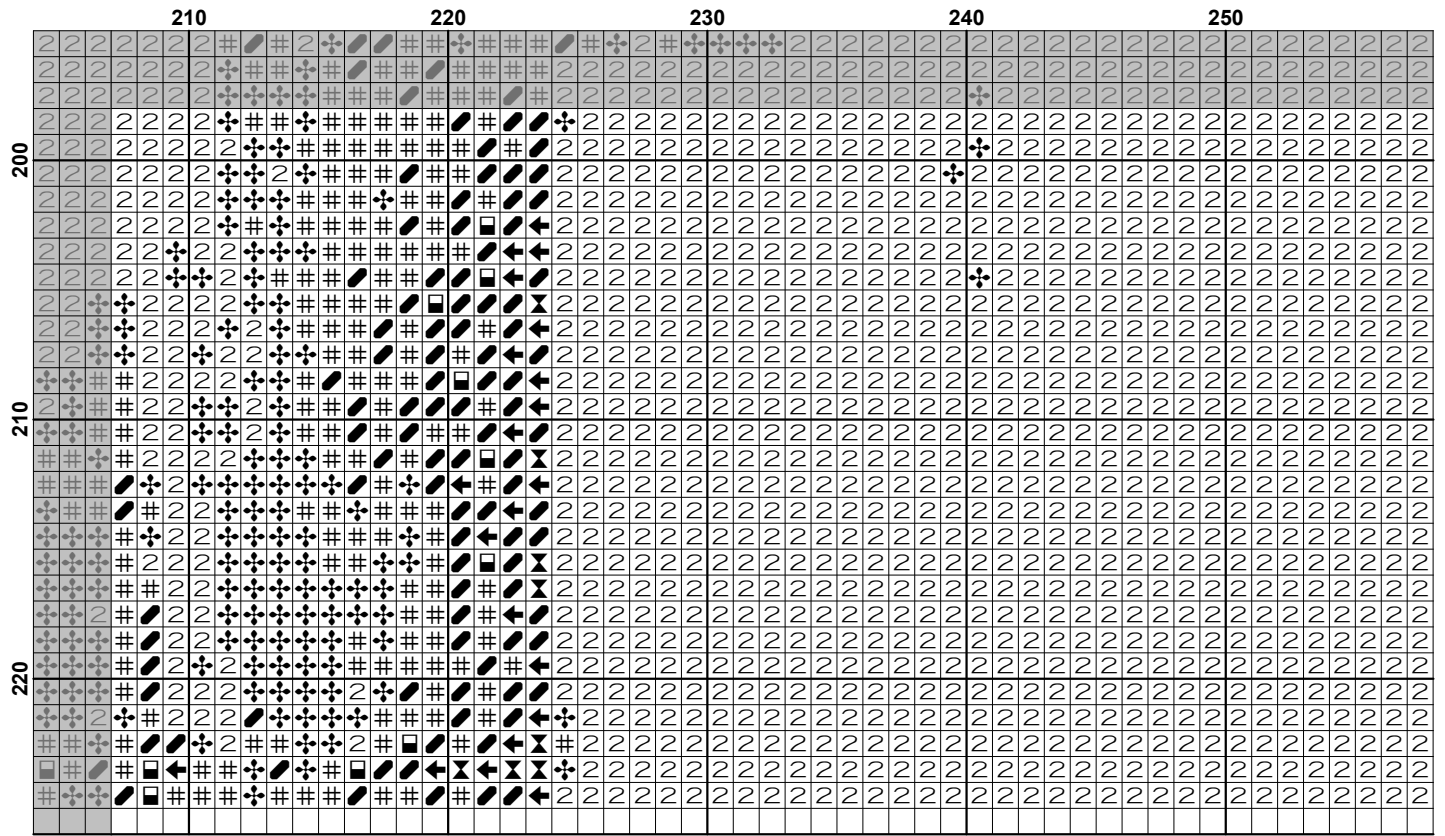


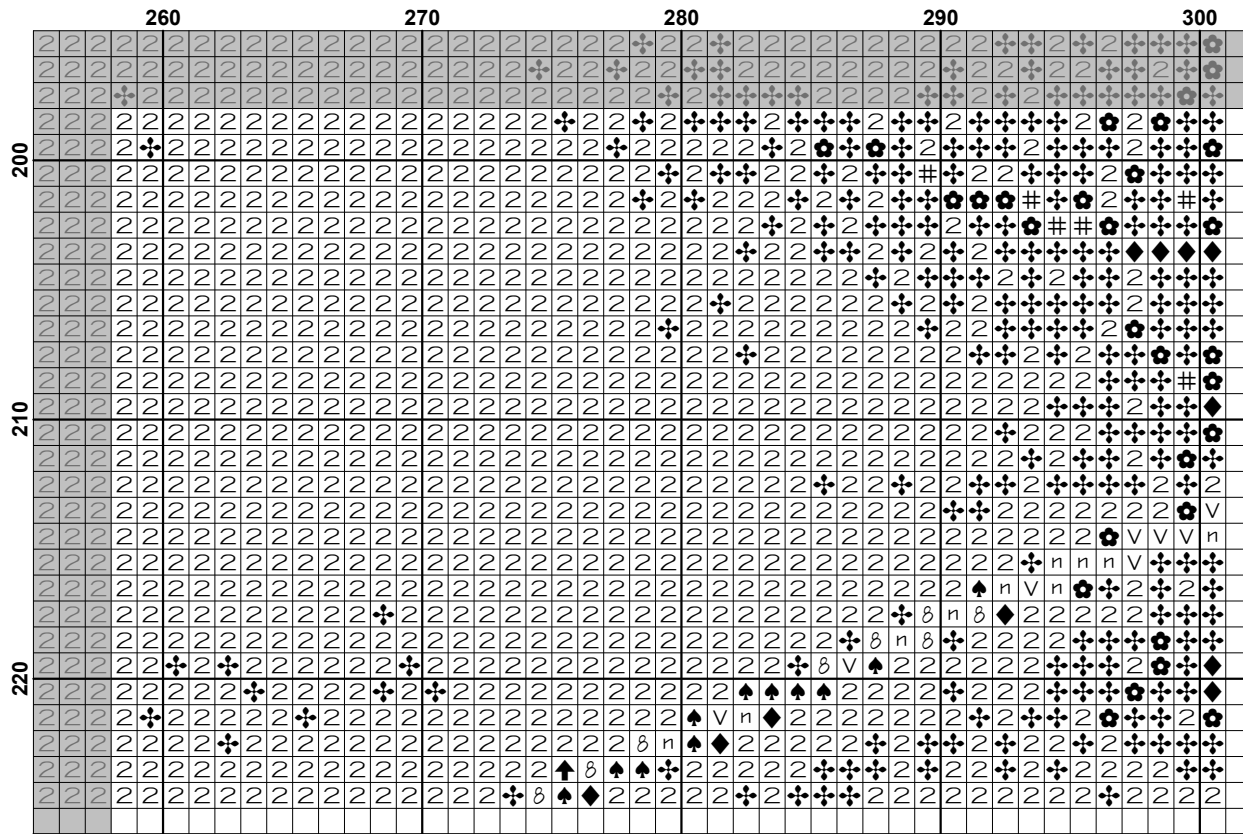








































Pattern Name: Portrait of an Unknown Woman
Designed By: Artwork by Ivan Kramskoi
Company: Artecy Cross Stitch
Copyright: Copyright Artecy Cross Stitch. All rights Reserved.
Fabric: Aida 14, White
 300w X 224h Stitches
Size(s): 14 Count, 21-3/8w X 16h in
 16 Count, 18-3/4w X 14h in
 18 Count, 16-5/8w X 12-3/8h in

Floss Used for Full Stitches:

Symbol	Strands	Type	Number	Color
	2	DMC	152	Shell Pink-MD LT
	2	DMC	224	Shell Pink-VY LT
	2	DMC	300	Mahogany-VY DK
	2	DMC	310	Black
	2	DMC	336	Navy Blue
	2	DMC	400	Mahogany-DK
	2	DMC	402	Mahogany-VY LT
	2	DMC	407	Desert Sand-DK
	2	DMC	420	Hazelnut Brown-DK
	2	DMC	433	Brown-MD
	2	DMC	434	Brown-LT
	2	DMC	435	Brown-VY LT
	2	DMC	436	Tan
	2	DMC	451	Shell Gray-DK
	2	DMC	452	Shell Gray-MD
	2	DMC	453	Shell Gray-LT
	2	DMC	535	Ash Gray-VY LT
	2	DMC	543	Beige Brown-UL VY LT
	2	DMC	610	Drab Brown-DK
	2	DMC	632	Desert Sand-UL VY DK
	2	DMC	738	Tan-VY LT
	2	DMC	758	Terra Cotta-VY LT
	2	DMC	762	Pearl Gray-VY LT
	2	DMC	778	Antique Mauve-VY LT
	2	DMC	779	Cocoa-DK
	2	DMC	801	Coffee Brown-DK
	2	DMC	803	Baby Blue-UL VY DK
	2	DMC	815	Garnet-MD
	2	DMC	820	Royal Blue-VY DK
	2	DMC	822	Beige Gray-LT
	2	DMC	840	Beige Brown-MD
	2	DMC	841	Beige Brown-LT
	2	DMC	842	Beige Brown-VY LT
	2	DMC	844	Beaver Brown-UL DK
	2	DMC	898	Coffee Brown-VY DK
	2	DMC	902	Garnet-VY DK
	2	DMC	920	Copper-MD
	2	DMC	921	Copper
	2	DMC	934	Black Avocado Green
	2	DMC	938	Coffee Brown-UL DK
	2	DMC	945	Tawny
	2	DMC	950	Desert Sand-LT
	2	DMC	951	Tawny-LT
	2	DMC	975	Golden Brown-DK
	2	DMC	976	Golden Brown-MD
	2	DMC	977	Golden Brown-LT

Symbol	Strands	Type	Number	Color
	2	DMC	3031	Mocha Brown-VY DK
	4	DMC	3033	Mocha Brown-VY LT
	2	DMC	3041	Antique Violet-MD
	2	DMC	3042	Antique Violet-LT
	2	DMC	3045	Yellow Beige-DK
	2	DMC	3047	Yellow Beige-LT
	2	DMC	3064	Desert Sand
	2	DMC	3072	Beaver Gray-VY LT
	2	DMC	3371	Black Brown
	2	DMC	3743	Antique Violet-VY LT
	2	DMC	3770	Tawny-VY LT
	2	DMC	3772	Desert Sand-VY DK
	2	DMC	3774	Desert Sand-VY LT
	2	DMC	3776	Mahogany-LT
	2	DMC	3799	Pewter Gray-VY DK
	2	DMC	3826	Golden Brown
	2	DMC	3842	Wedgewood-DK
	2	DMC	3853	Autumn Gold-DK
	2	DMC	3854	Autumn Gold-MD
	2	DMC	3856	Mahogany-UL VY LT
	2	DMC	3857	Rosewood-DK
	2	DMC	3859	Rosewood-LT
	2	DMC	3860	Cocoa
	2	DMC	3861	Cocoa-LT
	2	DMC	3862	Mocha Beige-DK
	2	DMC	3863	Mocha Beige-MD
	2	DMC	3864	Mocha Beige-LT
	2	DMC	3866	Mocha Brown-UL VY LT

Notes:

The middle of this pattern can be found on page 9 and is 151 stitches across and 113 stitches down.

Pattern layout using page numbers in top left.

```

1  2  3  4  5  6
7  8  9 10 11 12
13 14 15 16 17 18
19 20 21 22 23 24

```

Usage Summary

Strands Per Skein: 6

Skein Length: 313.0 in

Type	Number	Full	Half	Quarter	Petite	Back(in)	Str(in)	Spec(in)	French	Bead	Skein Est.
DMC 152	152	582	0	0	0	0.0	0.0	0.0	0	0	1.000
DMC 224	224	316	0	0	0	0.0	0.0	0.0	0	0	1.000
DMC 300	300	330	0	0	0	0.0	0.0	0.0	0	0	1.000
DMC 310	310	18758	0	0	0	0.0	0.0	0.0	0	0	8.000
DMC 336	336	64	0	0	0	0.0	0.0	0.0	0	0	1.000
DMC 400	400	36	0	0	0	0.0	0.0	0.0	0	0	1.000
DMC 402	402	181	0	0	0	0.0	0.0	0.0	0	0	1.000
DMC 407	407	1029	0	0	0	0.0	0.0	0.0	0	0	1.000
DMC 420	420	174	0	0	0	0.0	0.0	0.0	0	0	1.000
DMC 433	433	239	0	0	0	0.0	0.0	0.0	0	0	1.000
DMC 434	434	238	0	0	0	0.0	0.0	0.0	0	0	1.000
DMC 435	435	254	0	0	0	0.0	0.0	0.0	0	0	1.000
DMC 436	436	114	0	0	0	0.0	0.0	0.0	0	0	1.000
DMC 451	451	458	0	0	0	0.0	0.0	0.0	0	0	1.000
DMC 452	452	1444	0	0	0	0.0	0.0	0.0	0	0	1.000
DMC 453	453	432	0	0	0	0.0	0.0	0.0	0	0	1.000
DMC 535	535	171	0	0	0	0.0	0.0	0.0	0	0	1.000
DMC 543	543	3173	0	0	0	0.0	0.0	0.0	0	0	2.000
DMC 610	610	160	0	0	0	0.0	0.0	0.0	0	0	1.000
DMC 632	632	154	0	0	0	0.0	0.0	0.0	0	0	1.000
DMC 738	738	156	0	0	0	0.0	0.0	0.0	0	0	1.000
DMC 758	758	52	0	0	0	0.0	0.0	0.0	0	0	1.000
DMC 762	762	290	0	0	0	0.0	0.0	0.0	0	0	1.000
DMC 778	778	981	0	0	0	0.0	0.0	0.0	0	0	1.000
DMC 779	779	289	0	0	0	0.0	0.0	0.0	0	0	1.000
DMC 801	801	243	0	0	0	0.0	0.0	0.0	0	0	1.000
DMC 803	803	102	0	0	0	0.0	0.0	0.0	0	0	1.000
DMC 815	815	15	0	0	0	0.0	0.0	0.0	0	0	1.000
DMC 820	820	107	0	0	0	0.0	0.0	0.0	0	0	1.000
DMC 822	822	6432	0	0	0	0.0	0.0	0.0	0	0	3.000
DMC 840	840	82	0	0	0	0.0	0.0	0.0	0	0	1.000
DMC 841	841	339	0	0	0	0.0	0.0	0.0	0	0	1.000
DMC 842	842	547	0	0	0	0.0	0.0	0.0	0	0	1.000
DMC 844	844	129	0	0	0	0.0	0.0	0.0	0	0	1.000
DMC 898	898	423	0	0	0	0.0	0.0	0.0	0	0	1.000
DMC 902	902	551	0	0	0	0.0	0.0	0.0	0	0	1.000
DMC 920	920	29	0	0	0	0.0	0.0	0.0	0	0	1.000
DMC 921	921	9	0	0	0	0.0	0.0	0.0	0	0	1.000
DMC 934	934	636	0	0	0	0.0	0.0	0.0	0	0	1.000
DMC 938	938	1355	0	0	0	0.0	0.0	0.0	0	0	1.000
DMC 945	945	83	0	0	0	0.0	0.0	0.0	0	0	1.000
DMC 950	950	234	0	0	0	0.0	0.0	0.0	0	0	1.000
DMC 951	951	4434	0	0	0	0.0	0.0	0.0	0	0	2.000
DMC 975	975	233	0	0	0	0.0	0.0	0.0	0	0	1.000
DMC 976	976	180	0	0	0	0.0	0.0	0.0	0	0	1.000
DMC 977	977	55	0	0	0	0.0	0.0	0.0	0	0	1.000
DMC 3031	3031	341	0	0	0	0.0	0.0	0.0	0	0	1.000
DMC 3033	3033	1920	0	0	0	0.0	0.0	0.0	0	0	1.000
DMC 3041	3041	196	0	0	0	0.0	0.0	0.0	0	0	1.000
DMC 3042	3042	254	0	0	0	0.0	0.0	0.0	0	0	1.000
DMC 3045	3045	48	0	0	0	0.0	0.0	0.0	0	0	1.000
DMC 3047	3047	78	0	0	0	0.0	0.0	0.0	0	0	1.000

Type	Number	Full	Half	Quarter	Petite	Back(in)	Str(in)	Spec(in)	French	Bead	Skein Est.
DMC	3064	30	0	0	0	0.0	0.0	0.0	0	0	1.000
DMC	3072	741	0	0	0	0.0	0.0	0.0	0	0	1.000
DMC	3371	4302	0	0	0	0.0	0.0	0.0	0	0	2.000
DMC	3743	336	0	0	0	0.0	0.0	0.0	0	0	1.000
DMC	3770	52	0	0	0	0.0	0.0	0.0	0	0	1.000
DMC	3772	391	0	0	0	0.0	0.0	0.0	0	0	1.000
DMC	3774	1197	0	0	0	0.0	0.0	0.0	0	0	1.000
DMC	3776	85	0	0	0	0.0	0.0	0.0	0	0	1.000
DMC	3799	449	0	0	0	0.0	0.0	0.0	0	0	1.000
DMC	3826	171	0	0	0	0.0	0.0	0.0	0	0	1.000
DMC	3842	157	0	0	0	0.0	0.0	0.0	0	0	1.000
DMC	3853	54	0	0	0	0.0	0.0	0.0	0	0	1.000
DMC	3854	35	0	0	0	0.0	0.0	0.0	0	0	1.000
DMC	3856	159	0	0	0	0.0	0.0	0.0	0	0	1.000
DMC	3857	172	0	0	0	0.0	0.0	0.0	0	0	1.000
DMC	3859	529	0	0	0	0.0	0.0	0.0	0	0	1.000
DMC	3860	129	0	0	0	0.0	0.0	0.0	0	0	1.000
DMC	3861	2218	0	0	0	0.0	0.0	0.0	0	0	1.000
DMC	3862	128	0	0	0	0.0	0.0	0.0	0	0	1.000
DMC	3863	1390	0	0	0	0.0	0.0	0.0	0	0	1.000
DMC	3864	1140	0	0	0	0.0	0.0	0.0	0	0	1.000
DMC	3866	4205	0	0	0	0.0	0.0	0.0	0	0	2.000