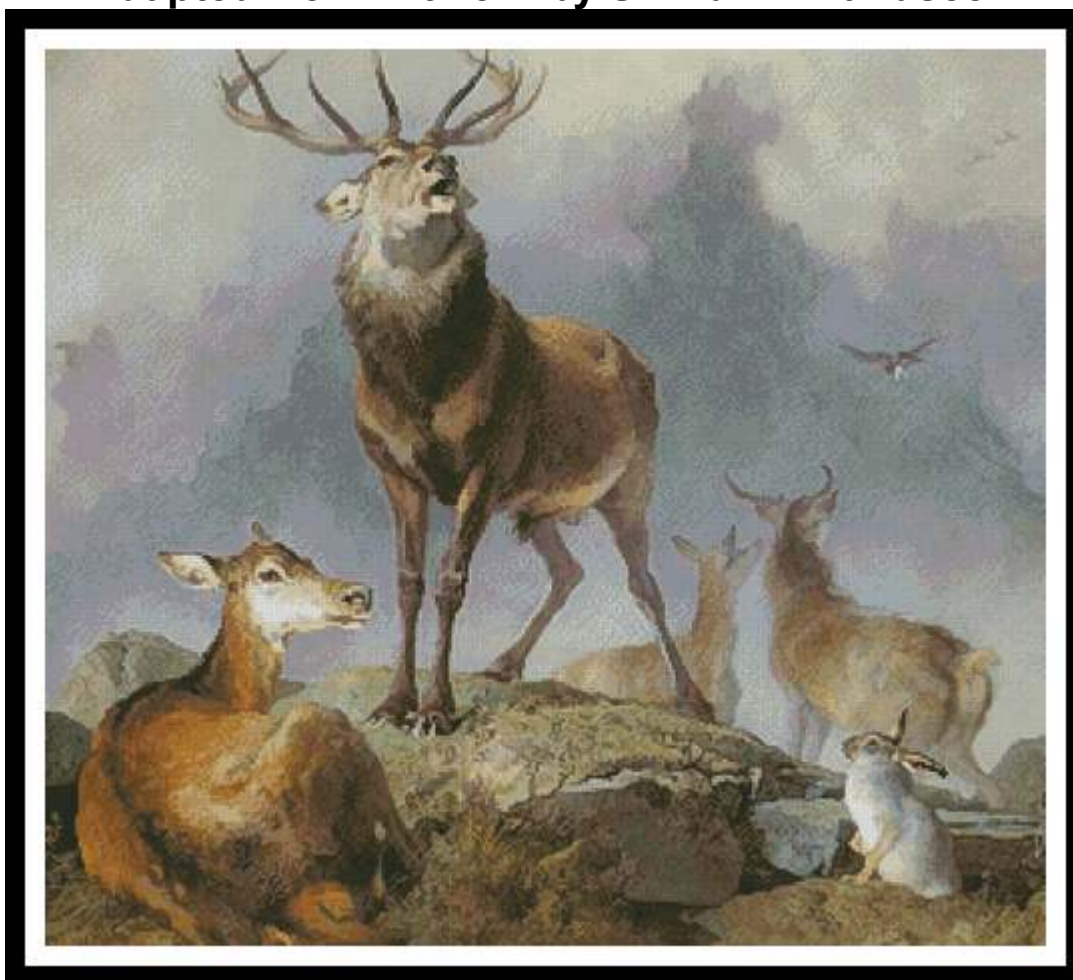


Scene in Braemar

Adapted from Artwork by Sir Edwin Landseer



Cross Stitch Design by Tereena Clarke.

Completed Size = 300w x 269h Stitches

14 Count, 21.5w x 19h inches (55cm x 48cm)

16 Count, 19w x 17h inches (48cm x 43cm)

18 Count, 17w x 15h inches (43cm x 38cm)

Uses 50 DMC cotton colours. Only full cross stitches are used in this pattern.

Pattern Instructions

* This pattern can be worked on any fabric type, colour or count you prefer. To work out the size of the finished article, take the number of stitches wide and high and divide it by the count of your fabric (e.g. 14,16,18 count aida etc) to get the size in inches. Times it by 2.54 to get centimetres. We have the sizes in inches shown on the previous page. Also leave at least a few inches of fabric around each side of the design to assist in framing. The higher the fabric count the smaller the completed project will be.

* To put the pattern together look in the top and bottom corners. The page numbers in brackets show which page number it joins up to. Page 1 always starts at the top left hand side of the pattern. Our pages also have a shaded grey section. This indicates a 3 row overlap from adjoining pages to assist with reading the pattern. PLEASE DO NOT RESTITCH THIS AREA.

* You should begin at the centre of the pattern. To find the centre of the pattern it is just a matter of laying the pattern out and locating the arrows at the top and left hand side of the patterns, they are determined by dividing the stitch numbers wide and high in half. Where the two points meet in the middle, that is the centre.

* If you need more assistance to find the middle of your pattern or the page layout, please see the notes section on the colour symbol chart. The easiest way to stitch this pattern, as it has multiple pages, is to stitch one page at a time.

* We suggest using two strands of floss for each stitch and one strand for backstitching if the pattern calls for it.

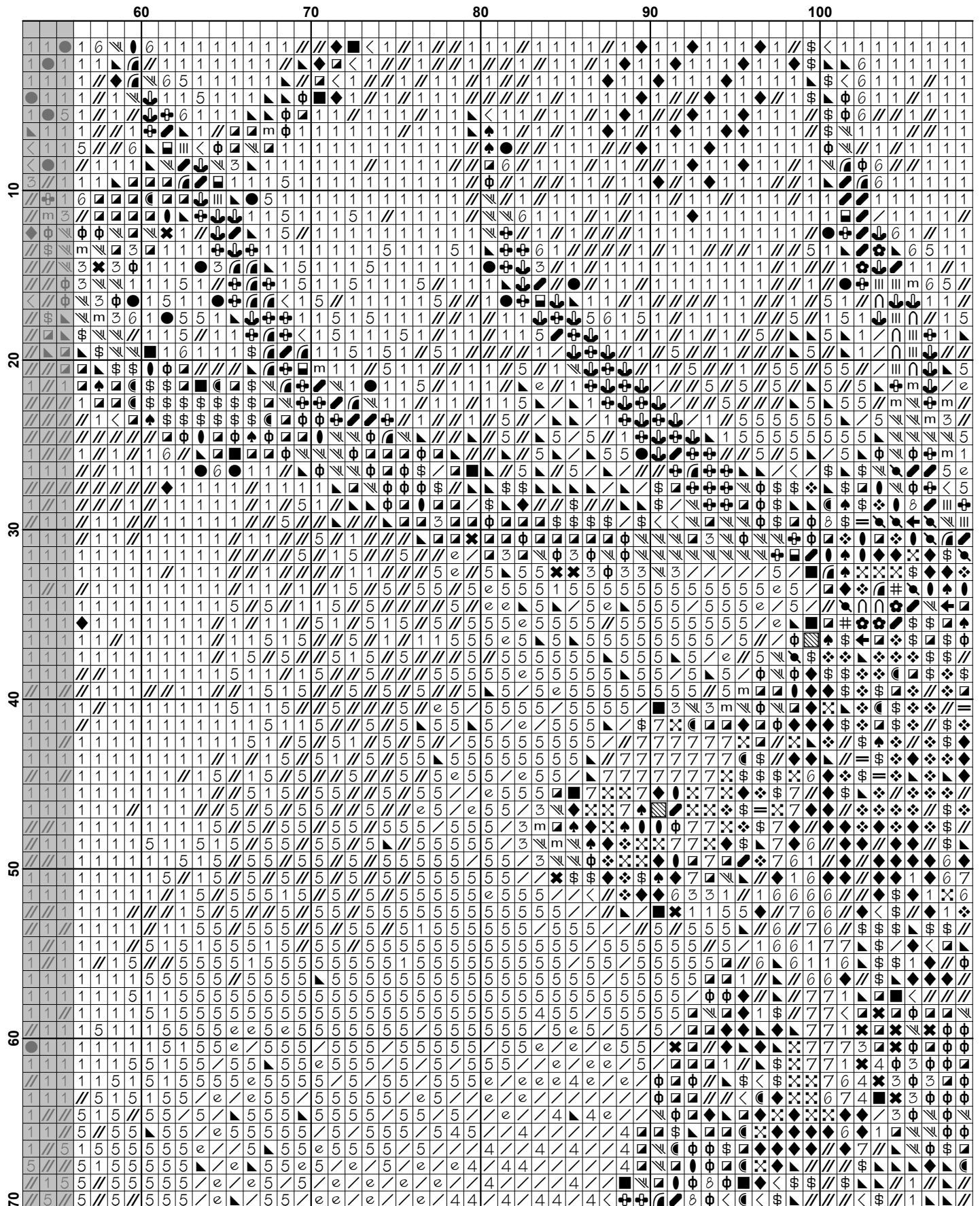
We hope you enjoy stitching our pattern.

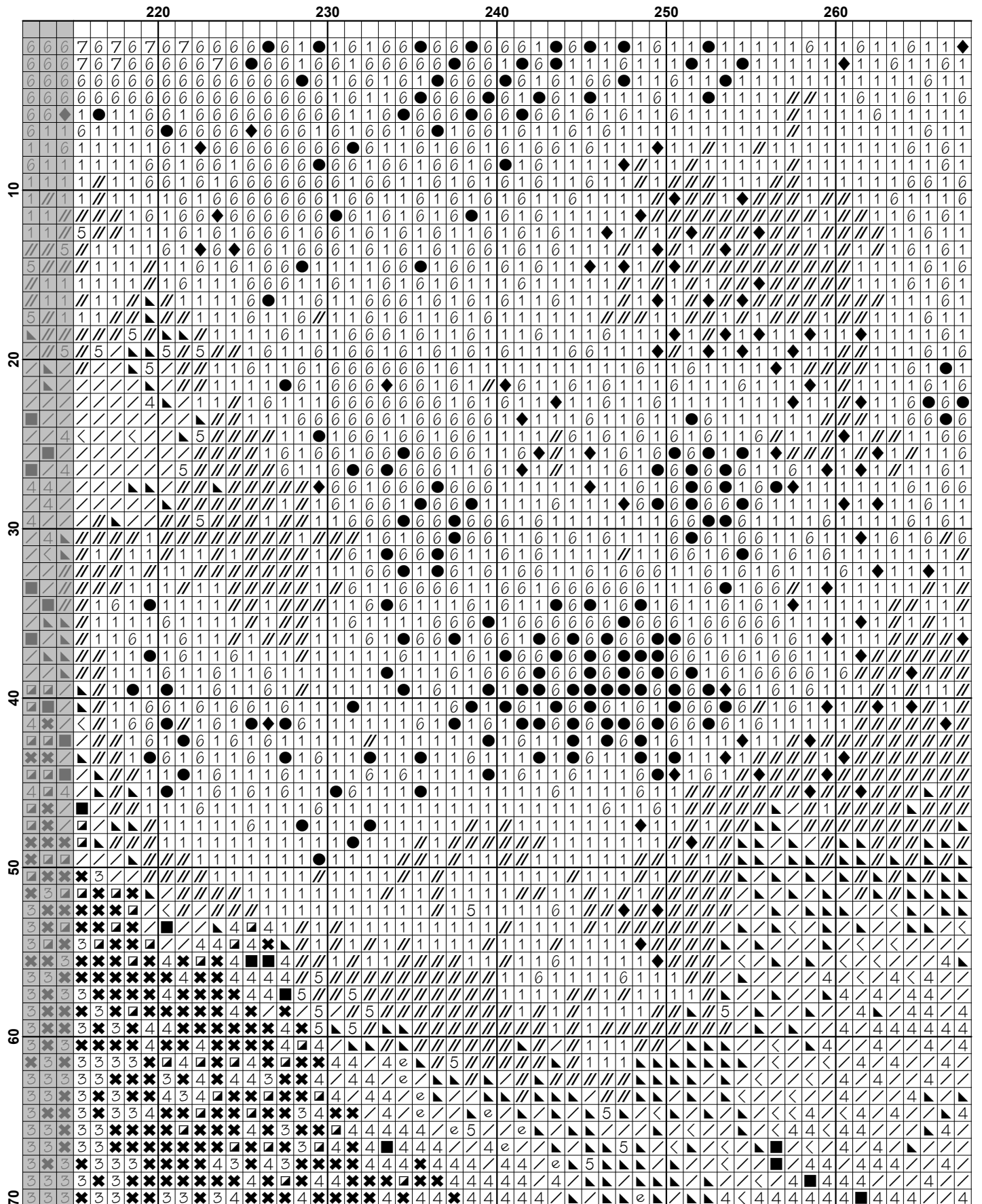
Thanks and Best Wishes
Tereena Clarke

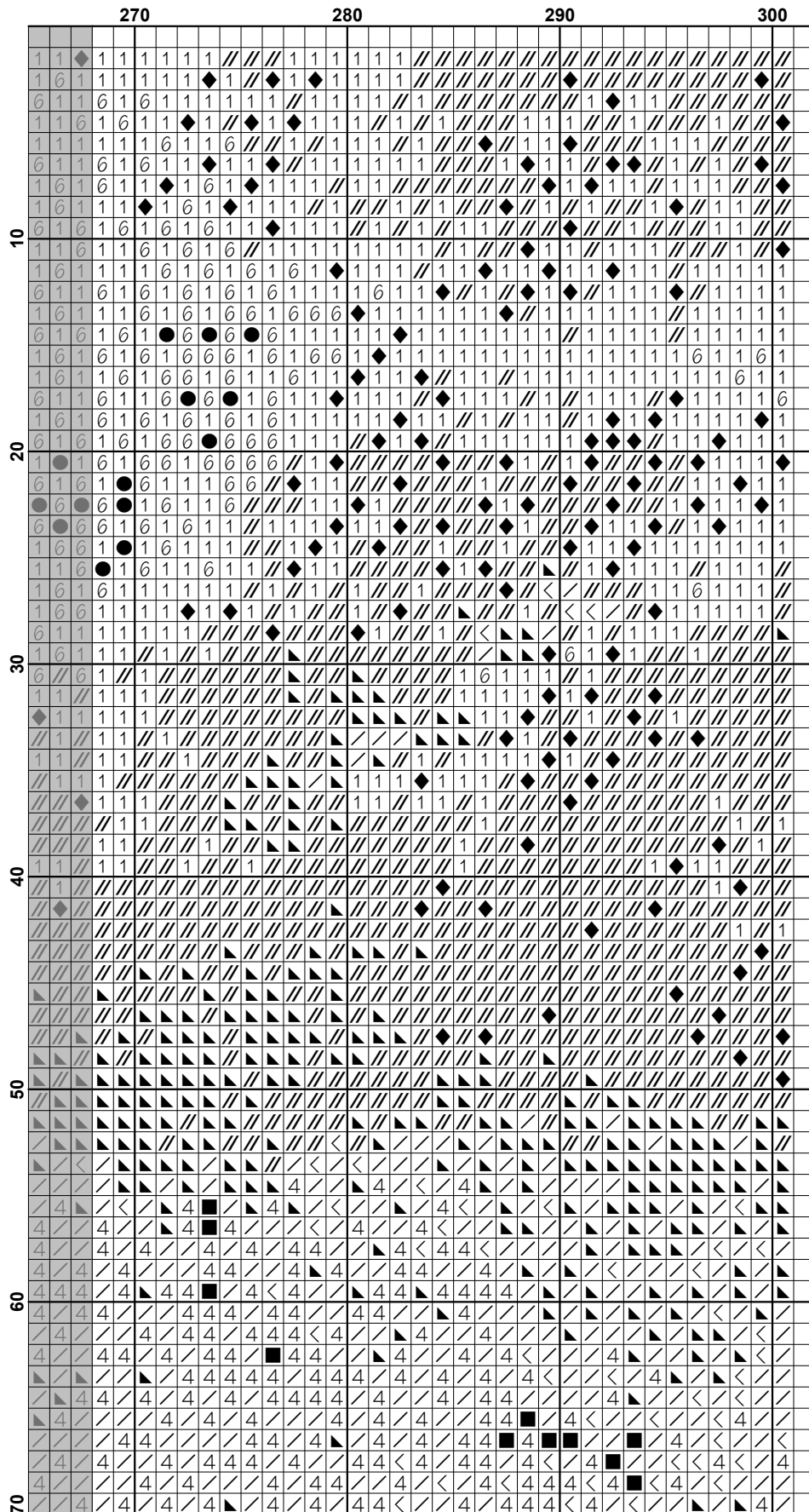
Artecy Cross Stitch
Po Box 3474
Tuggerah, NSW 2259
Australia

Websites: www.artecy.com and www.artecyshop.com
Email: artecy@artecy.com or stitch@artecyshop.com

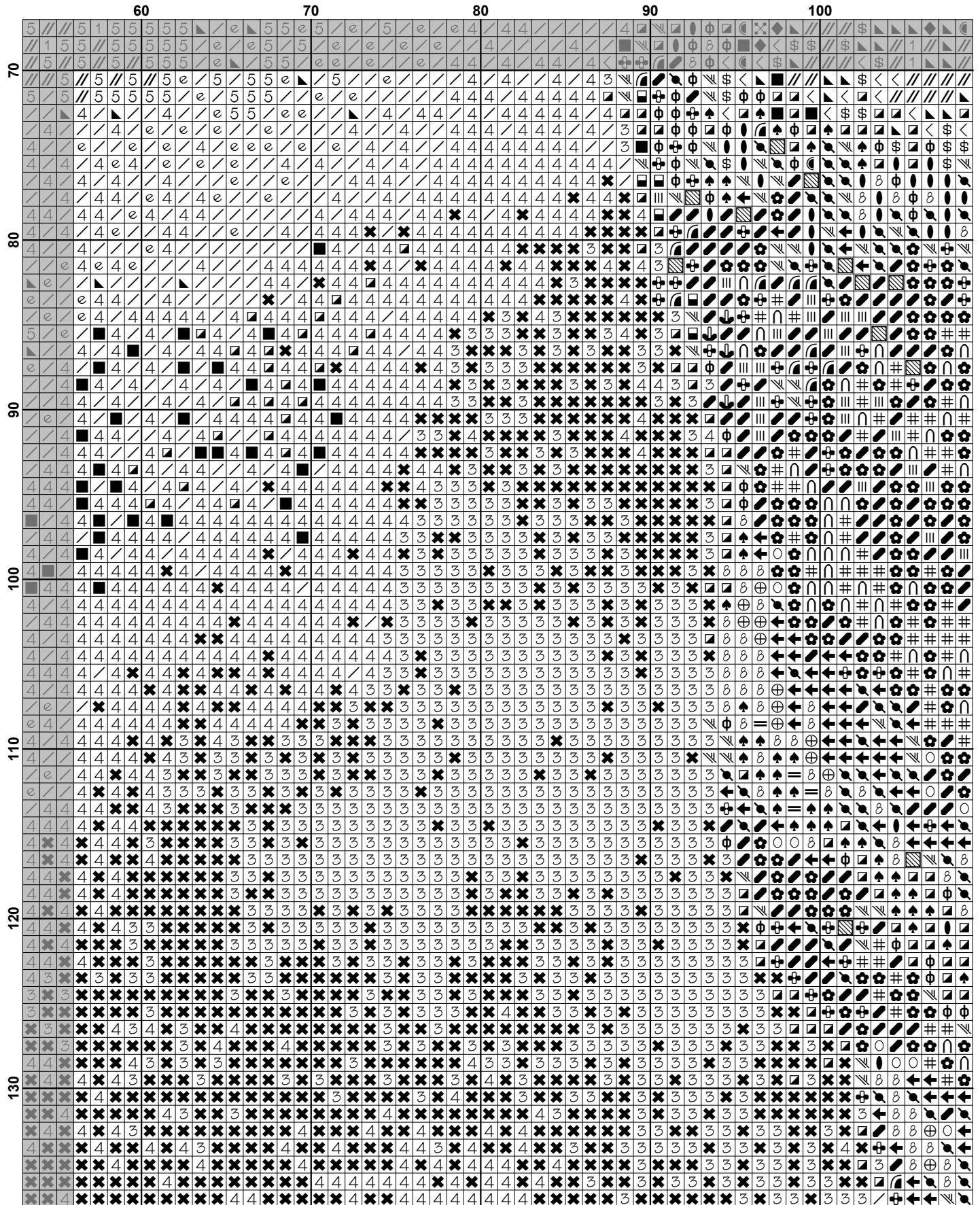
*Patterns are strictly for personal use only. It is against our copyright to make kits for sale from our designs or to sell, copy or redistribute this pattern in any form. You may not upload our patterns to any internet forums or groups or any other website. You may make 1 copy of this pattern for a working copy for your own personal use if needed.

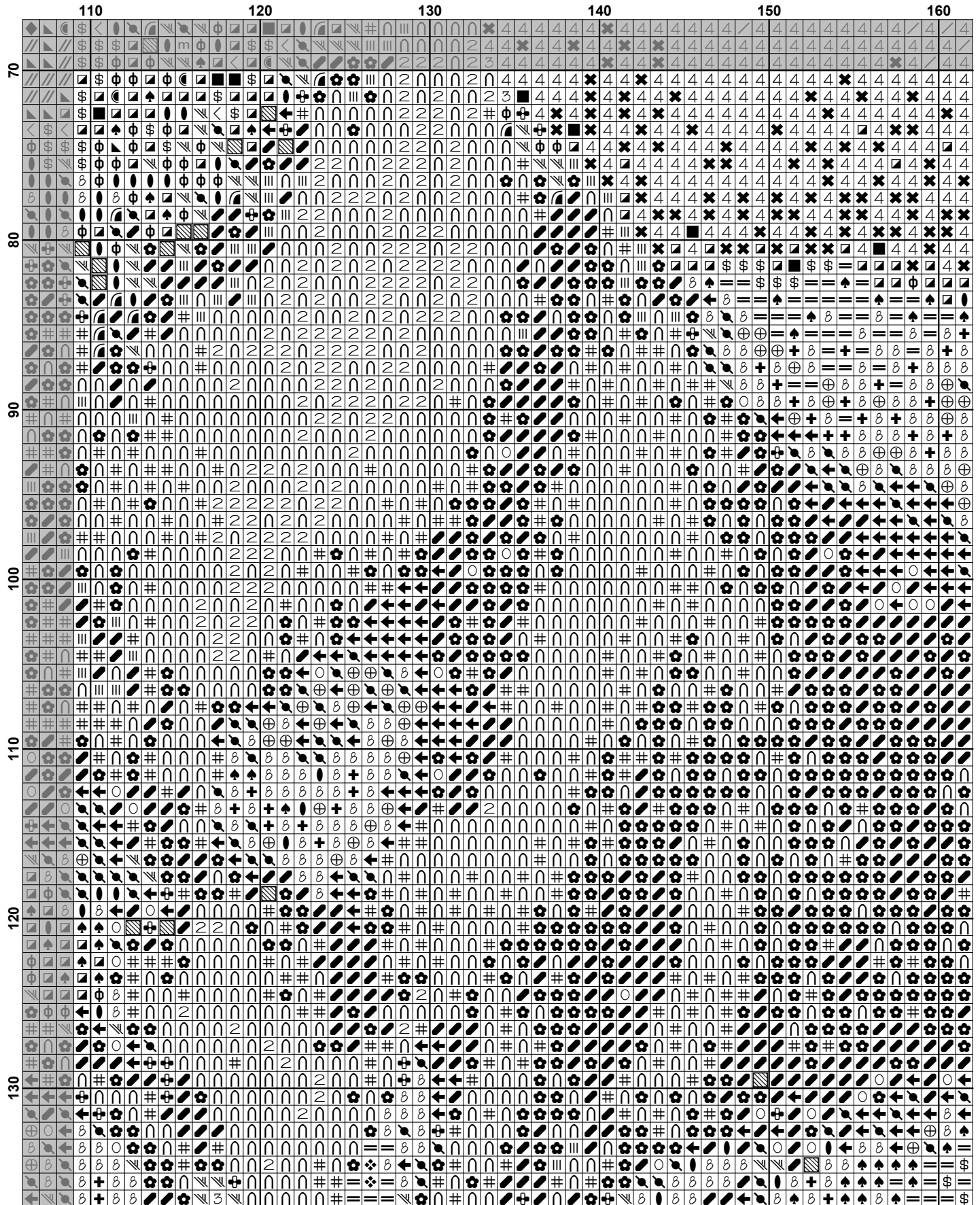


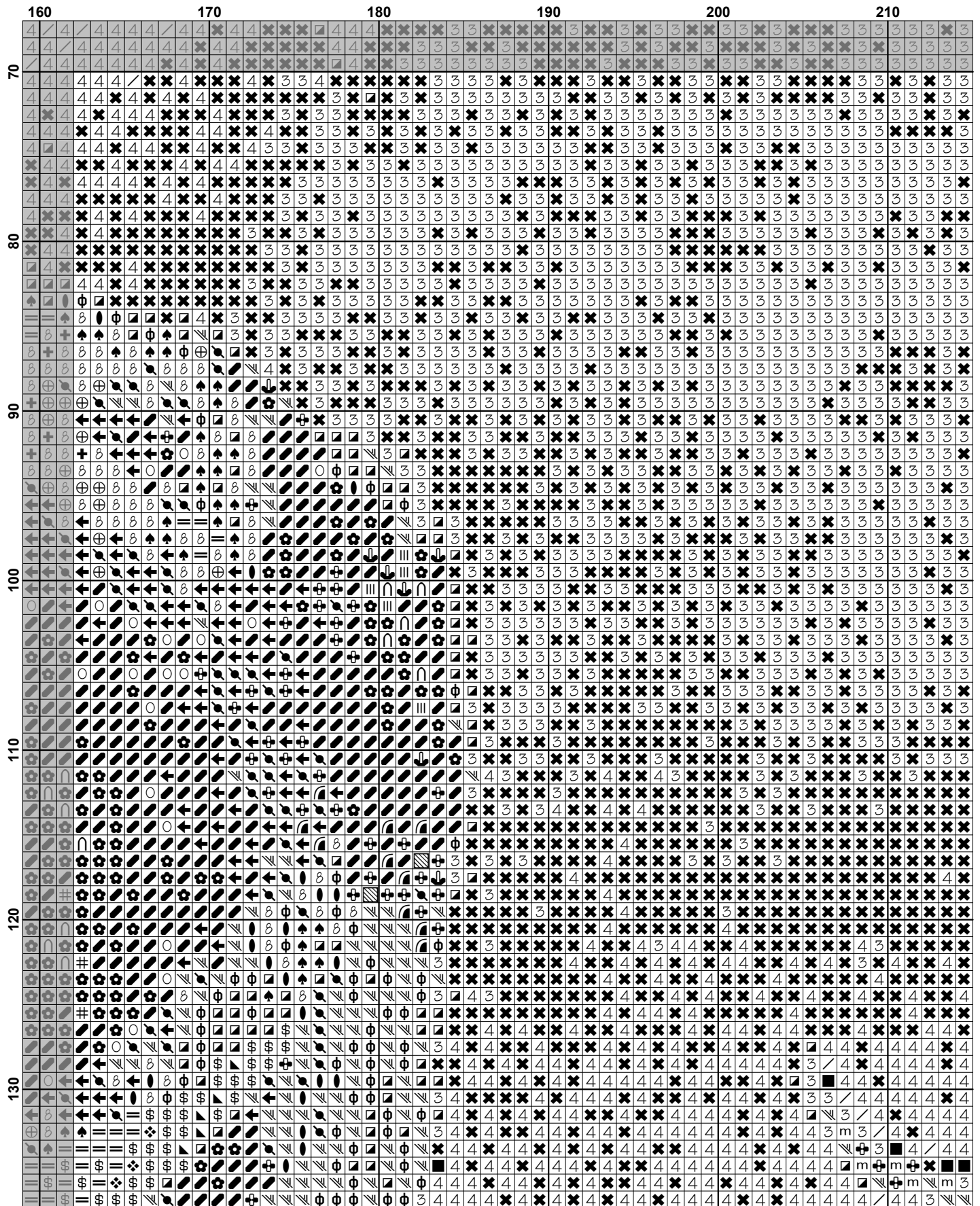


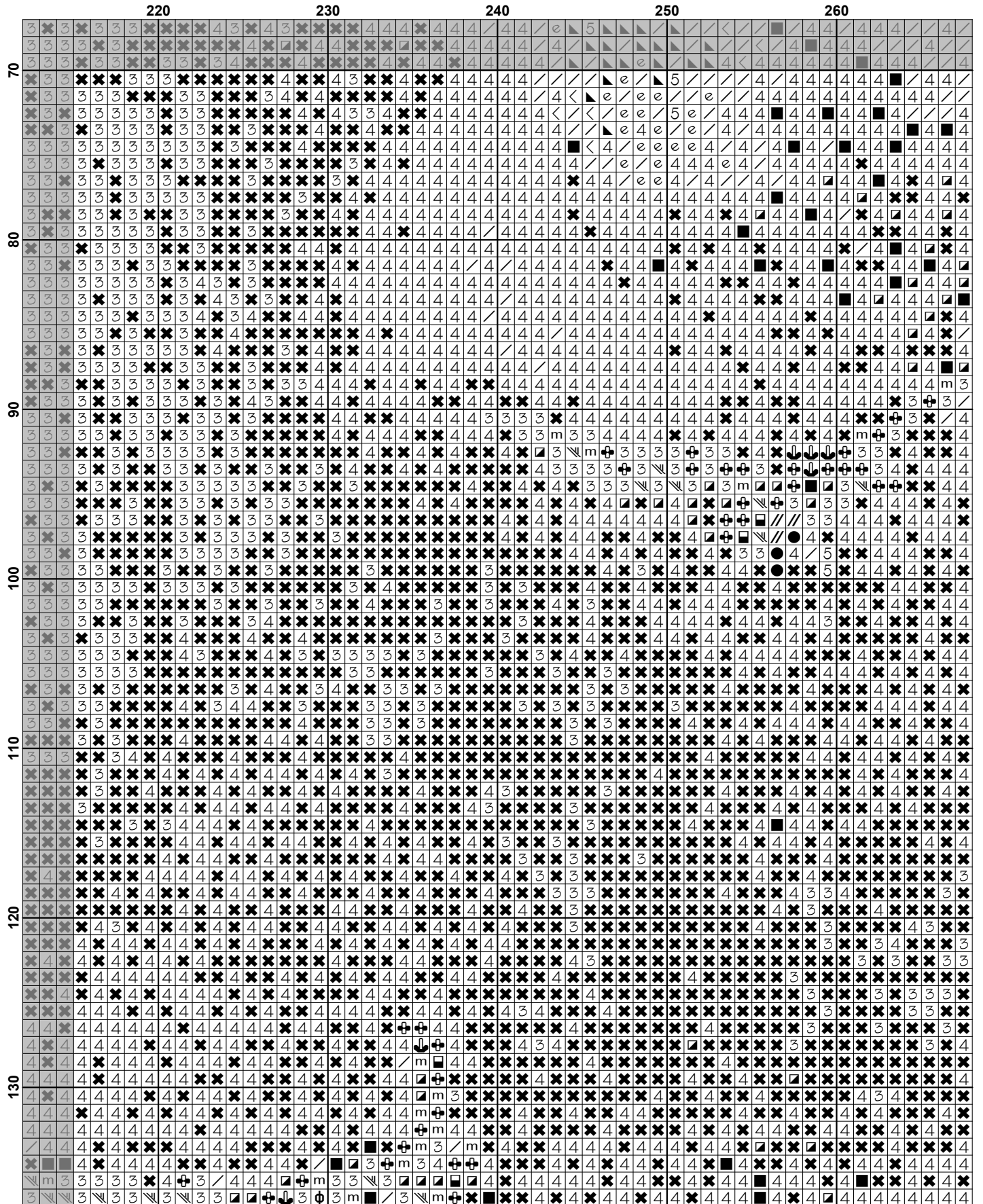


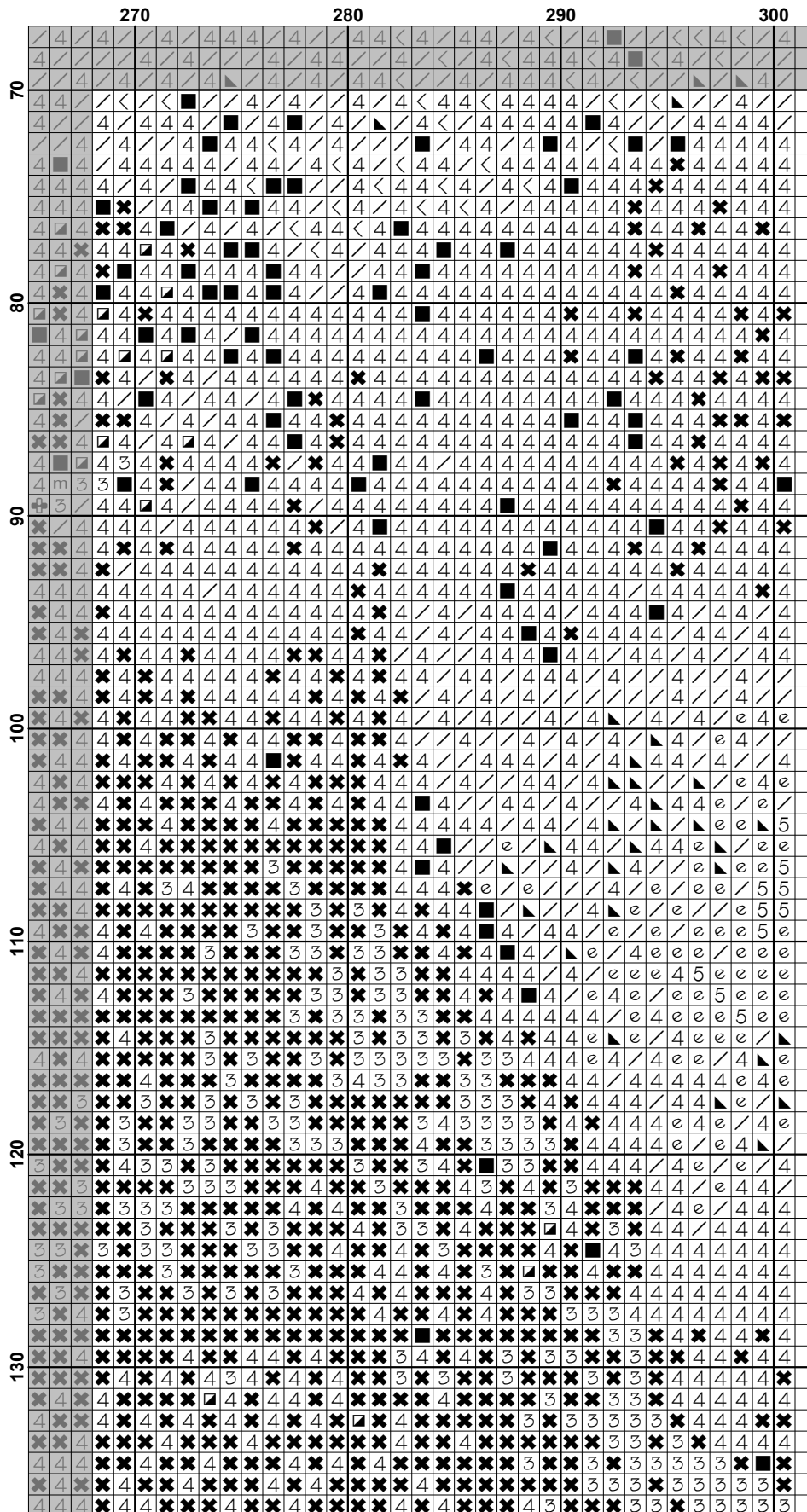
	10										20										30										40										50									
70	1	1	1	1	1	1	1	1	1	1	1	1	1	1	1	1	1	1	1	1	1	1	1	1	1	1	1	1	1	1	1	1	1	1	1	1	1	1	1	1	1	1	1	1	1	1	1	1	1	1
	1	1	1	1	1	1	1	1	1	1	1	1	1	1	1	1	1	1	1	1	1	1	1	1	1	1	1	1	1	1	1	1	1	1	1	1	1	1	1	1	1	1	1	1	1	1	1	1	1	1
80	1	1	1	1	1	1	1	1	1	1	1	1	1	1	1	1	1	1	1	1	1	1	1	1	1	1	1	1	1	1	1	1	1	1	1	1	1	1	1	1	1	1	1	1	1	1	1	1	1	
	1	1	1	1	1	1	1	1	1	1	1	1	1	1	1	1	1	1	1	1	1	1	1	1	1	1	1	1	1	1	1	1	1	1	1	1	1	1	1	1	1	1	1	1	1	1	1	1	1	
90	1	1	1	1	1	1	1	1	1	1	1	1	1	1	1	1	1	1	1	1	1	1	1	1	1	1	1	1	1	1	1	1	1	1	1	1	1	1	1	1	1	1	1	1	1	1	1	1	1	
	1	1	1	1	1	1	1	1	1	1	1	1	1	1	1	1	1	1	1	1	1	1	1	1	1	1	1	1	1	1	1	1	1	1	1	1	1	1	1	1	1	1	1	1	1	1	1	1	1	
100	1	1	1	1	1	1	1	1	1	1	1	1	1	1	1	1	1	1	1	1	1	1	1	1	1	1	1	1	1	1	1	1	1	1	1	1	1	1	1	1	1	1	1	1	1	1	1	1	1	
	1	1	1	1	1	1	1	1	1	1	1	1	1	1	1	1	1	1	1	1	1	1	1	1	1	1	1	1	1	1	1	1	1	1	1	1	1	1	1	1	1	1	1	1	1	1	1	1	1	
110	1	1	1	1	1	1	1	1	1	1	1	1	1	1	1	1	1	1	1	1	1	1	1	1	1	1	1	1	1	1	1	1	1	1	1	1	1	1	1	1	1	1	1	1	1	1	1	1	1	
	1	1	1	1	1	1	1	1	1	1	1	1	1	1	1	1	1	1	1	1	1	1	1	1	1	1	1	1	1	1	1	1	1	1	1	1	1	1	1	1	1	1	1	1	1	1	1	1	1	
120	1	1	1	1	1	1	1	1	1	1	1	1	1	1	1	1	1	1	1	1	1	1	1	1	1	1	1	1	1	1	1	1	1	1	1	1	1	1	1	1	1	1	1	1	1	1	1	1	1	
	1	1	1	1	1	1	1	1	1	1	1	1	1	1	1	1	1	1	1	1	1	1	1	1	1	1	1	1	1	1	1	1	1	1	1	1	1	1	1	1	1	1	1	1	1	1	1	1	1	
130	1	1	1	1	1	1	1	1	1	1	1	1	1	1	1	1	1	1	1	1	1	1	1	1	1	1	1	1	1	1	1	1	1	1	1	1	1	1	1	1	1	1	1	1	1	1	1	1	1	
	1	1	1	1	1	1	1	1	1	1	1	1	1	1	1	1	1	1	1	1	1	1	1	1	1	1	1	1	1	1	1	1	1	1	1	1	1	1	1	1	1	1	1	1	1	1	1	1	1	

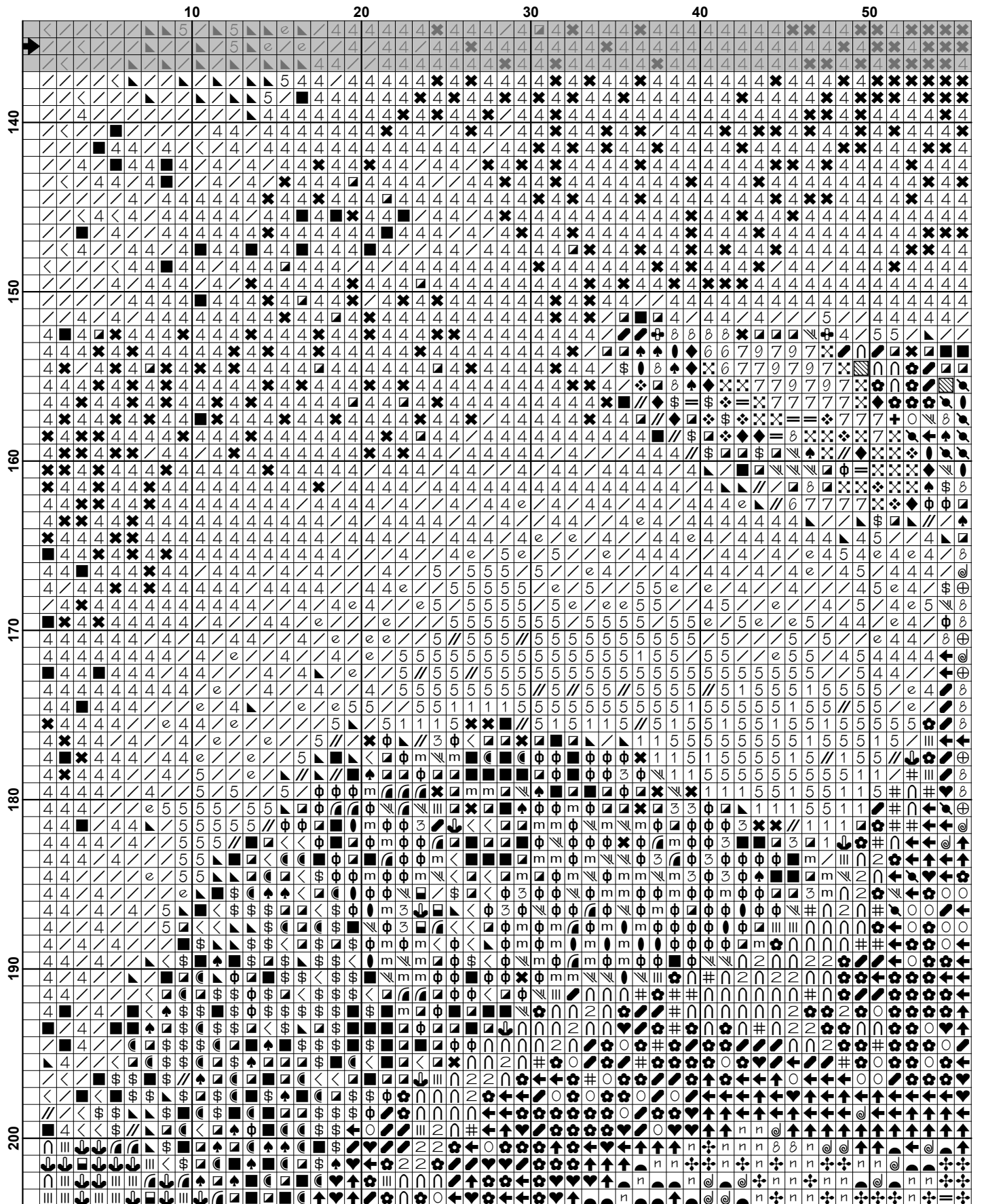


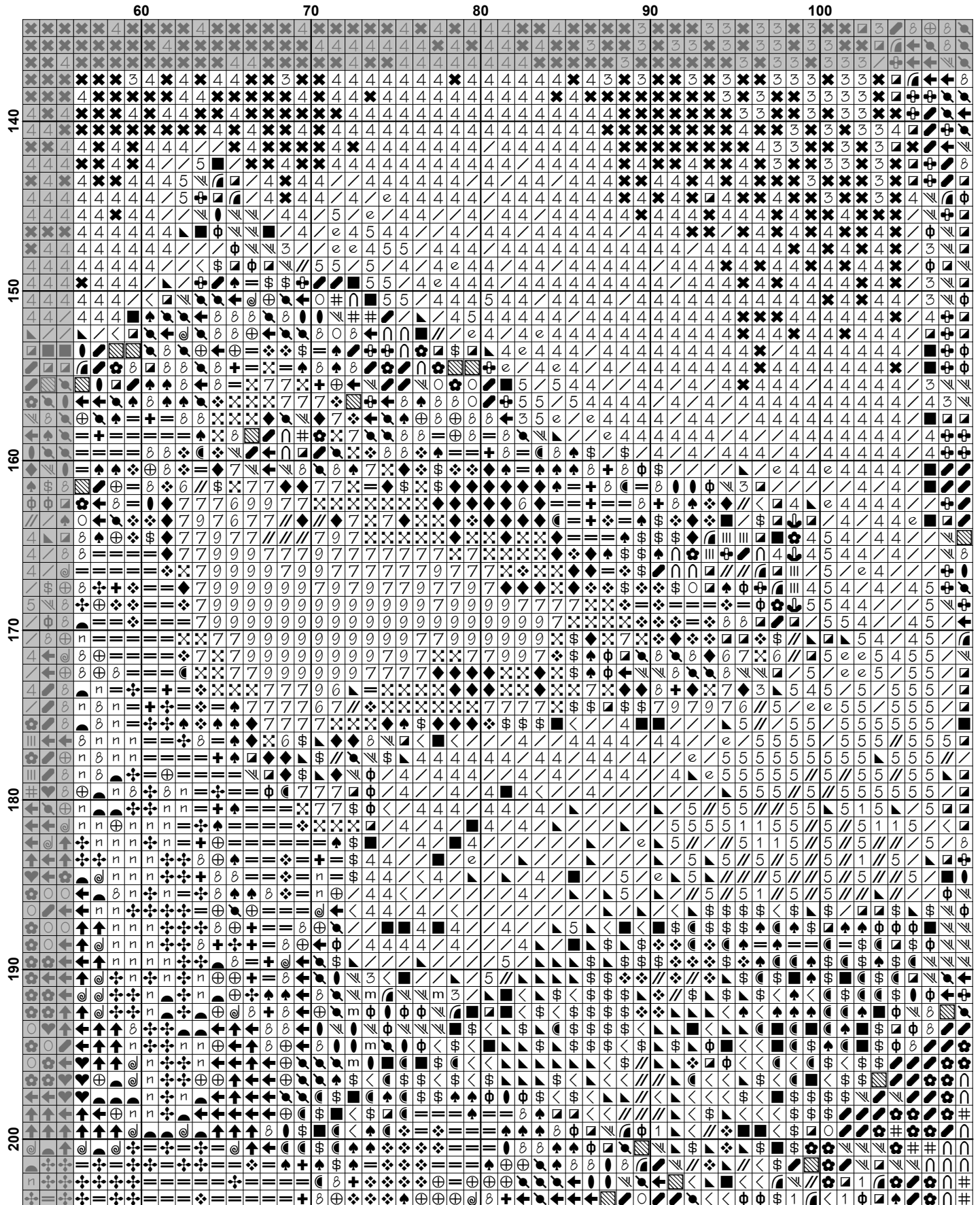


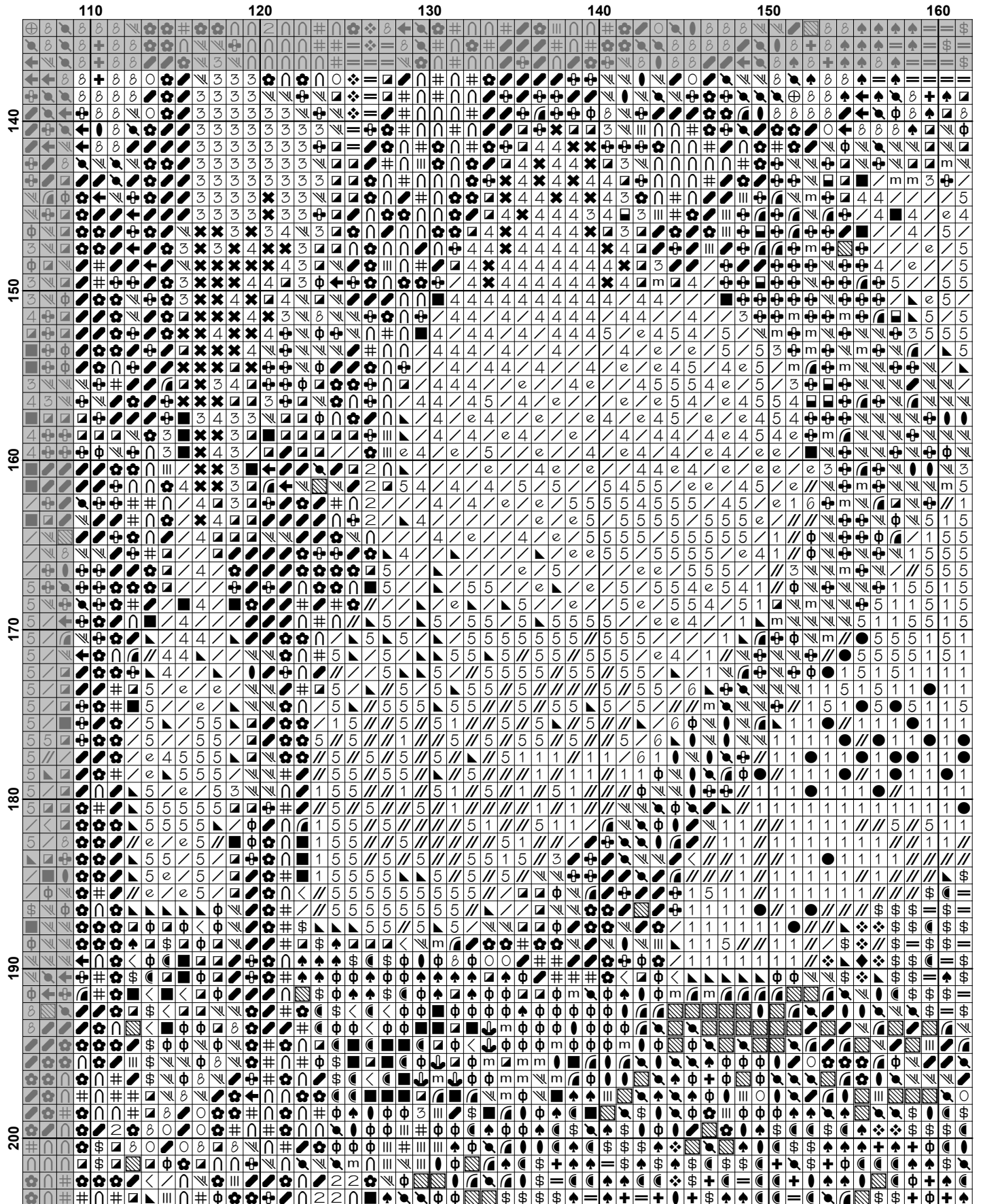


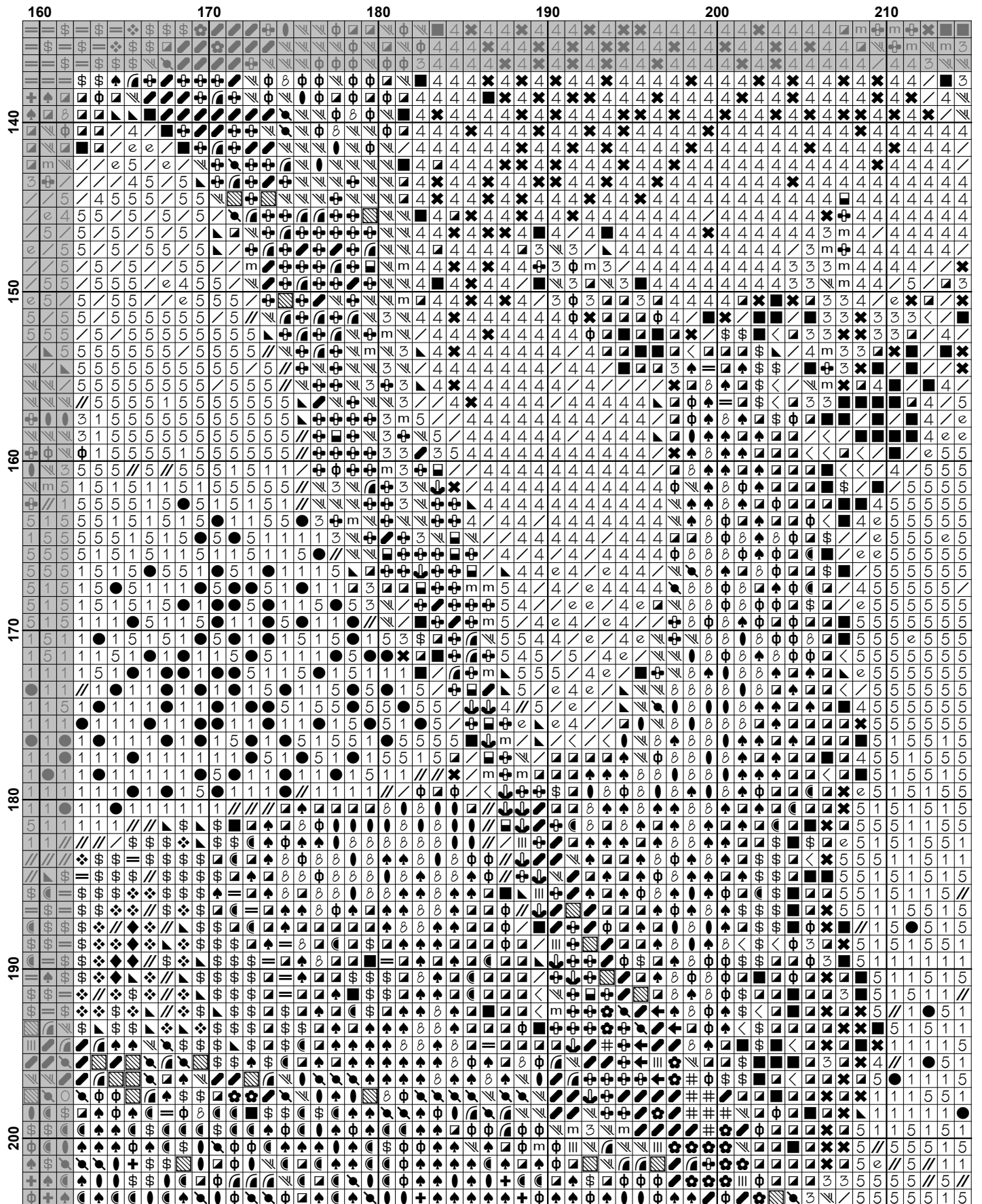


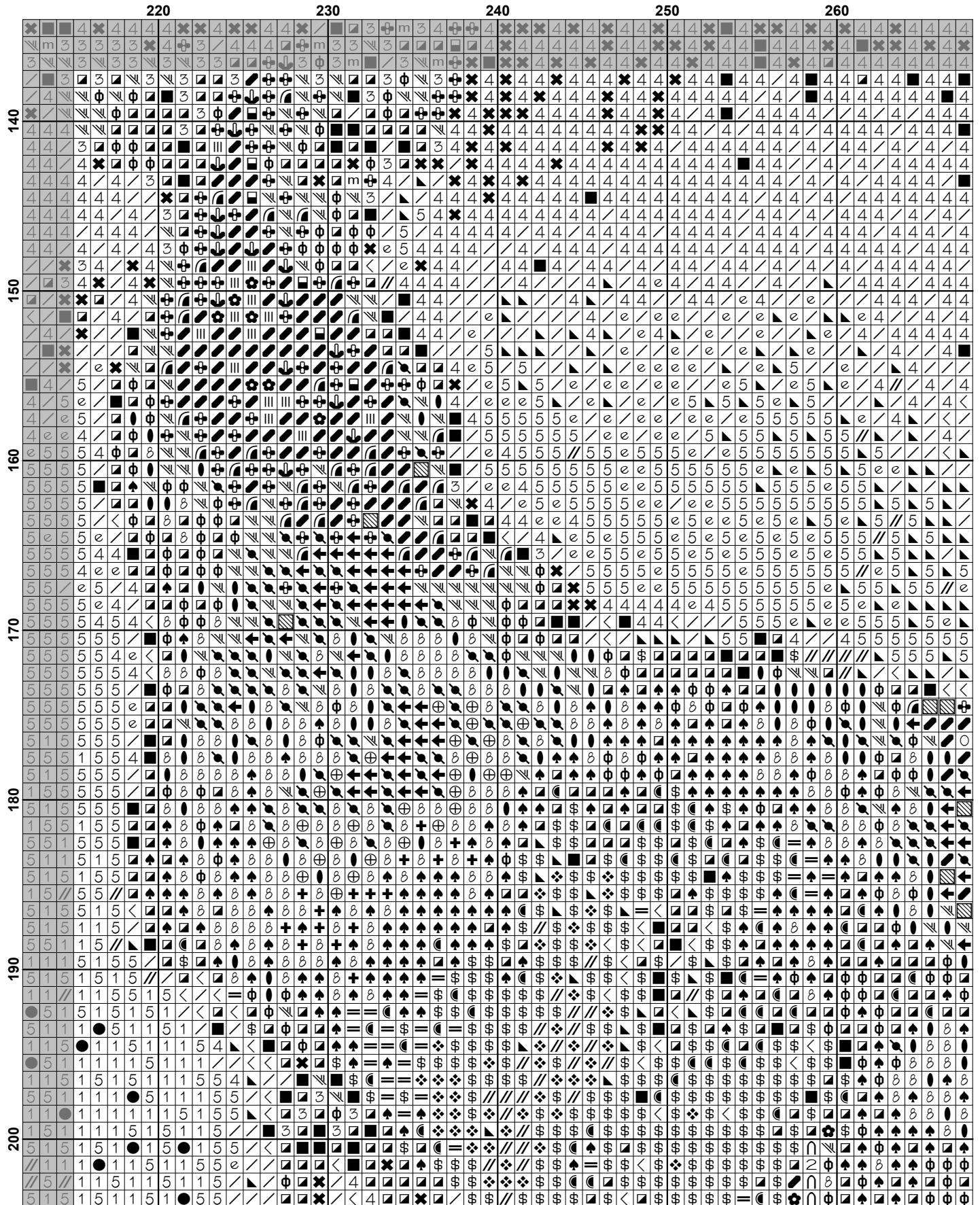


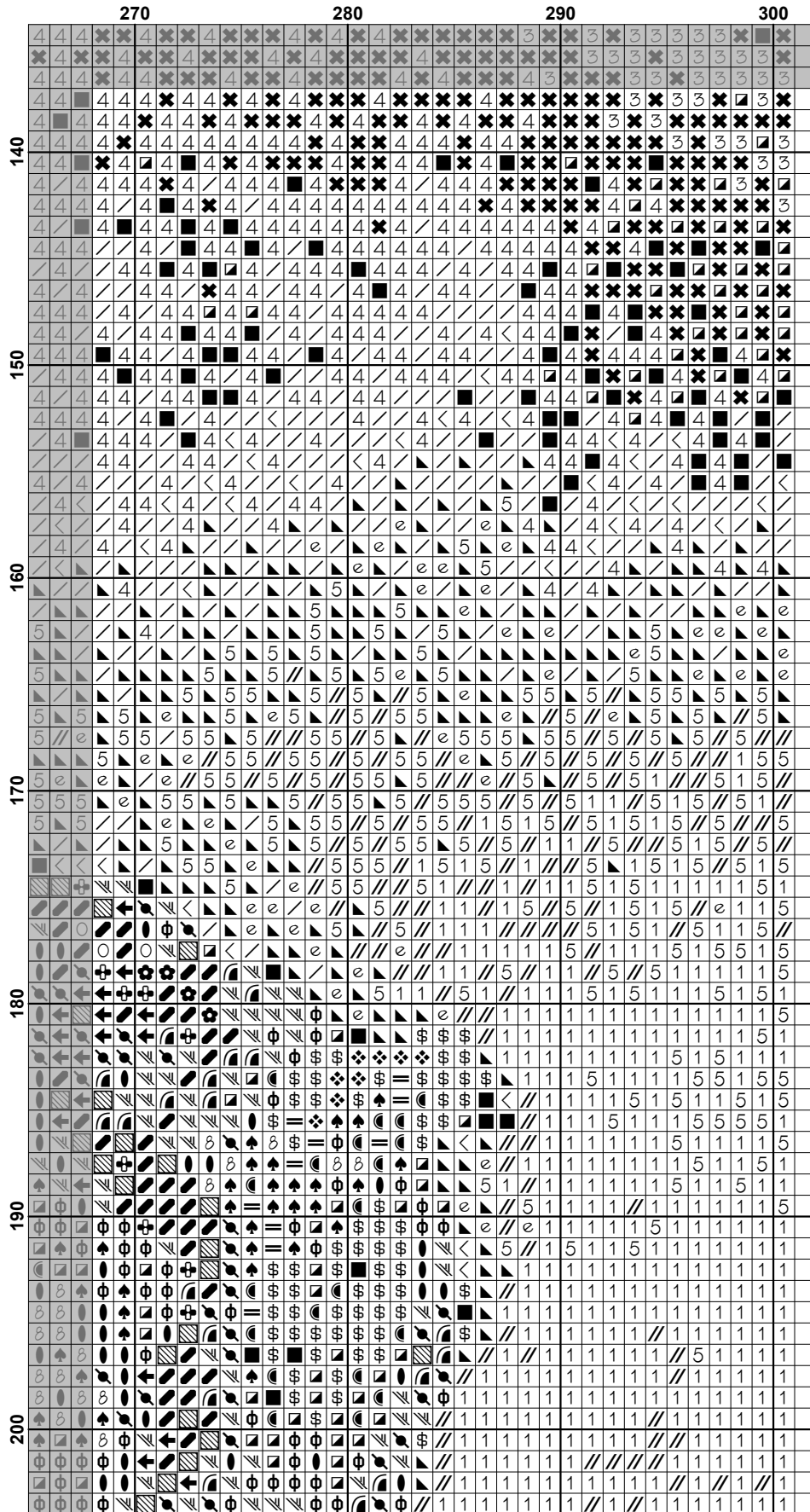


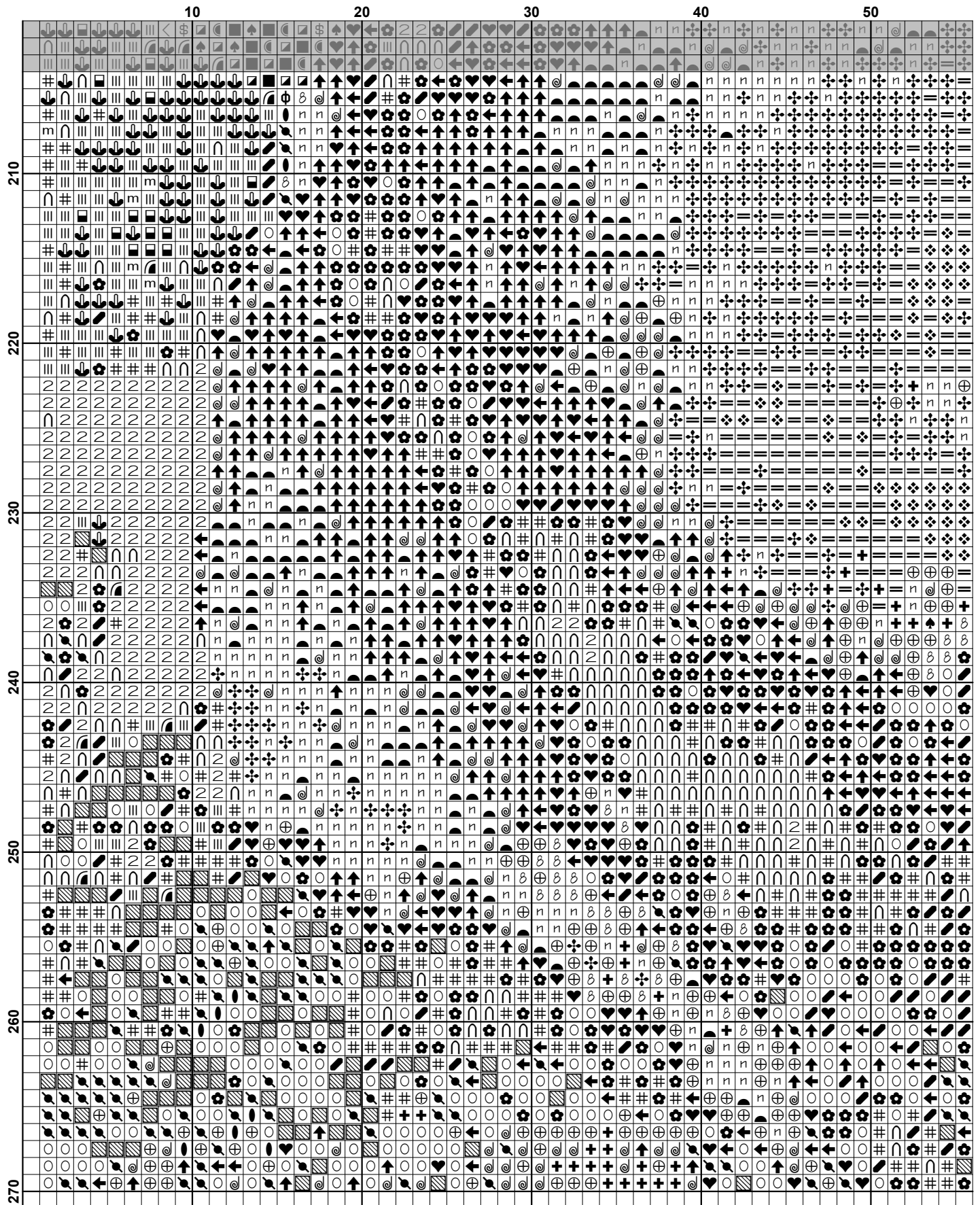


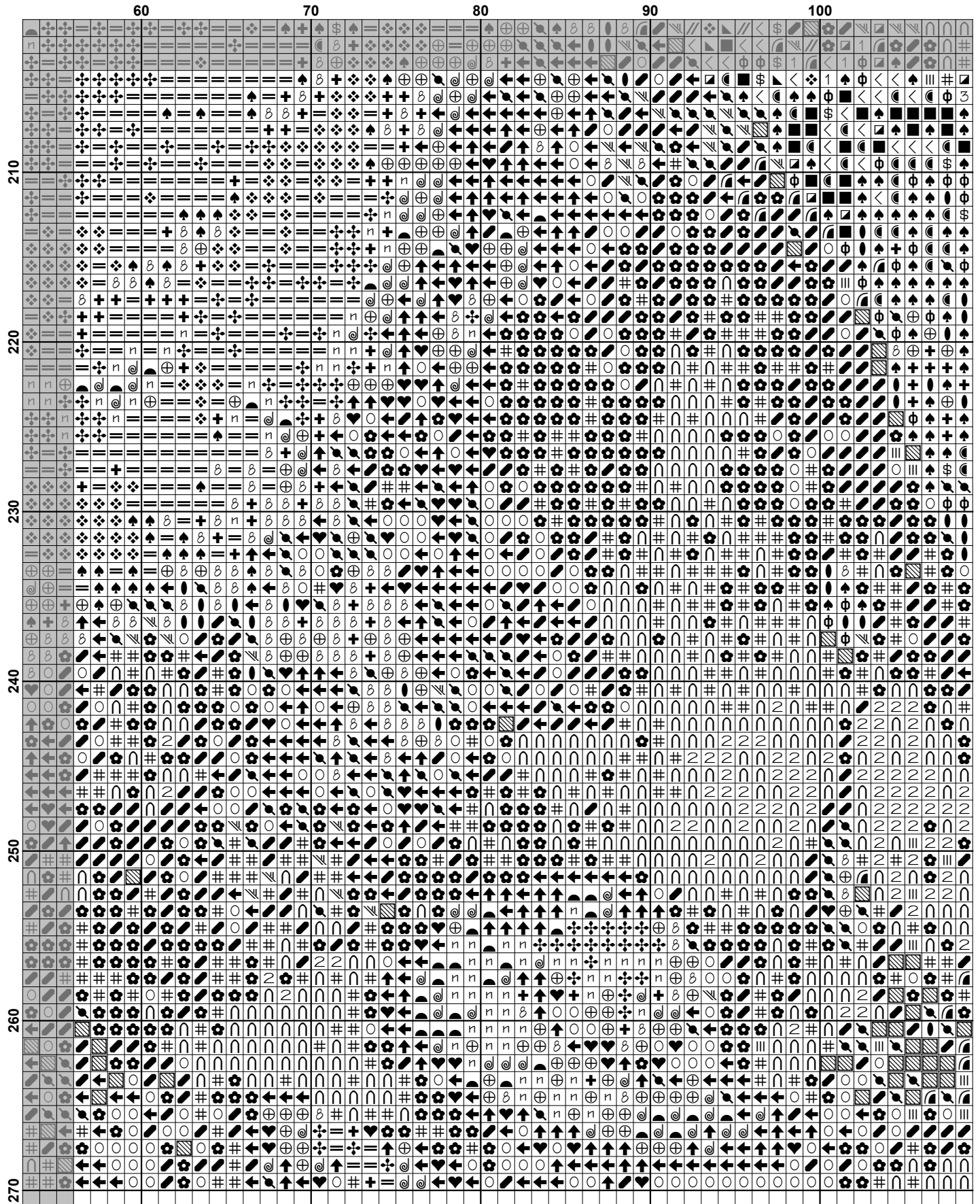


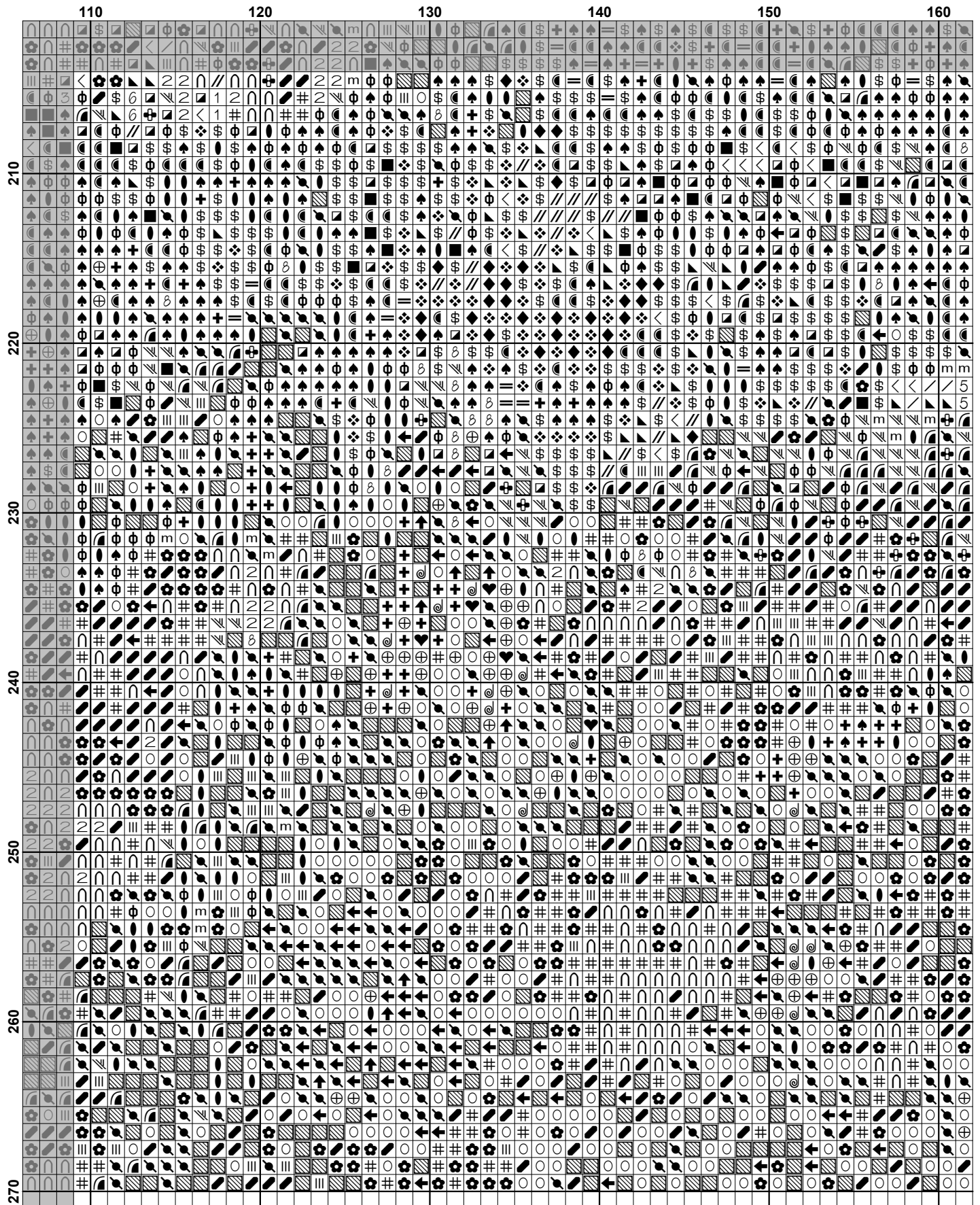


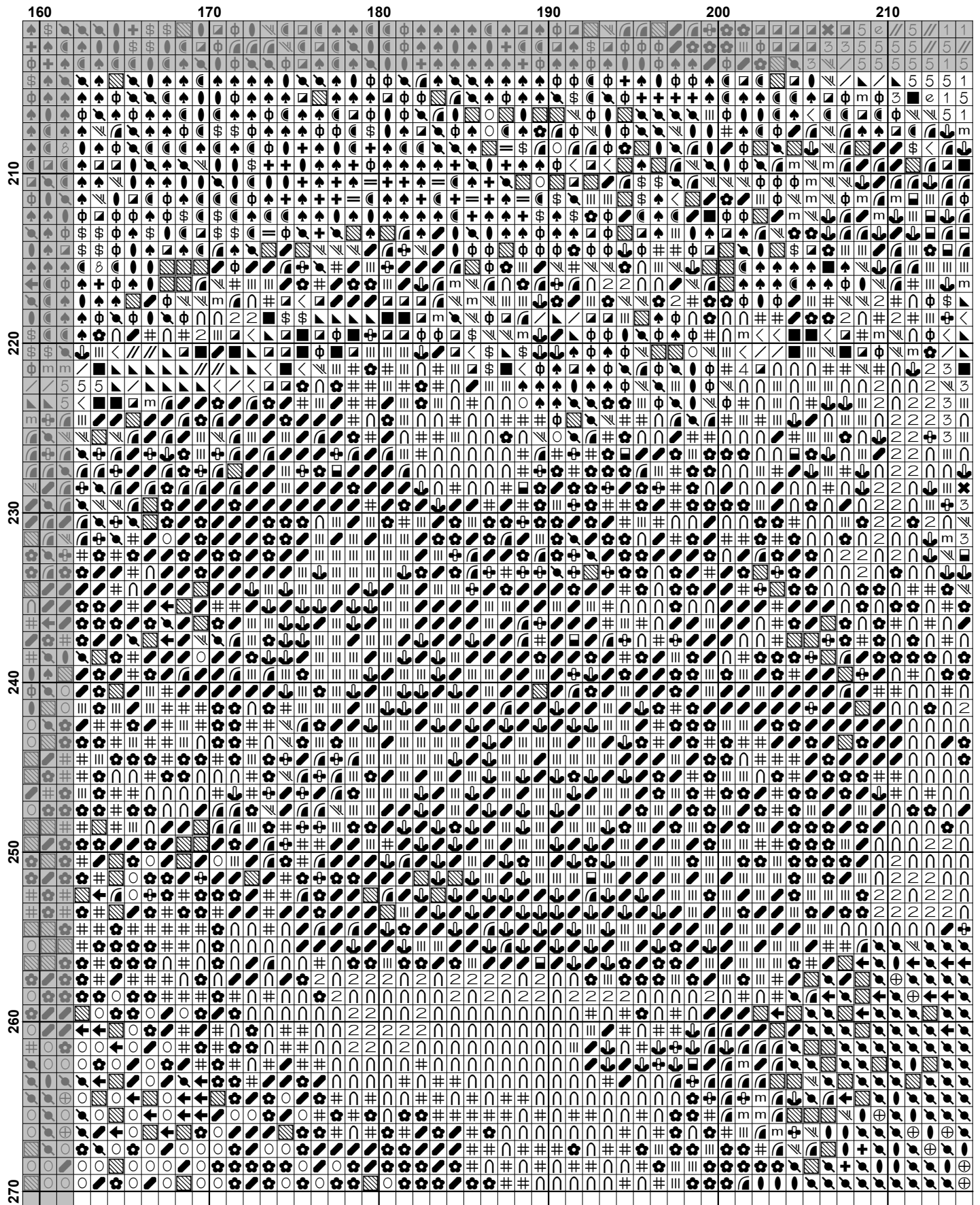


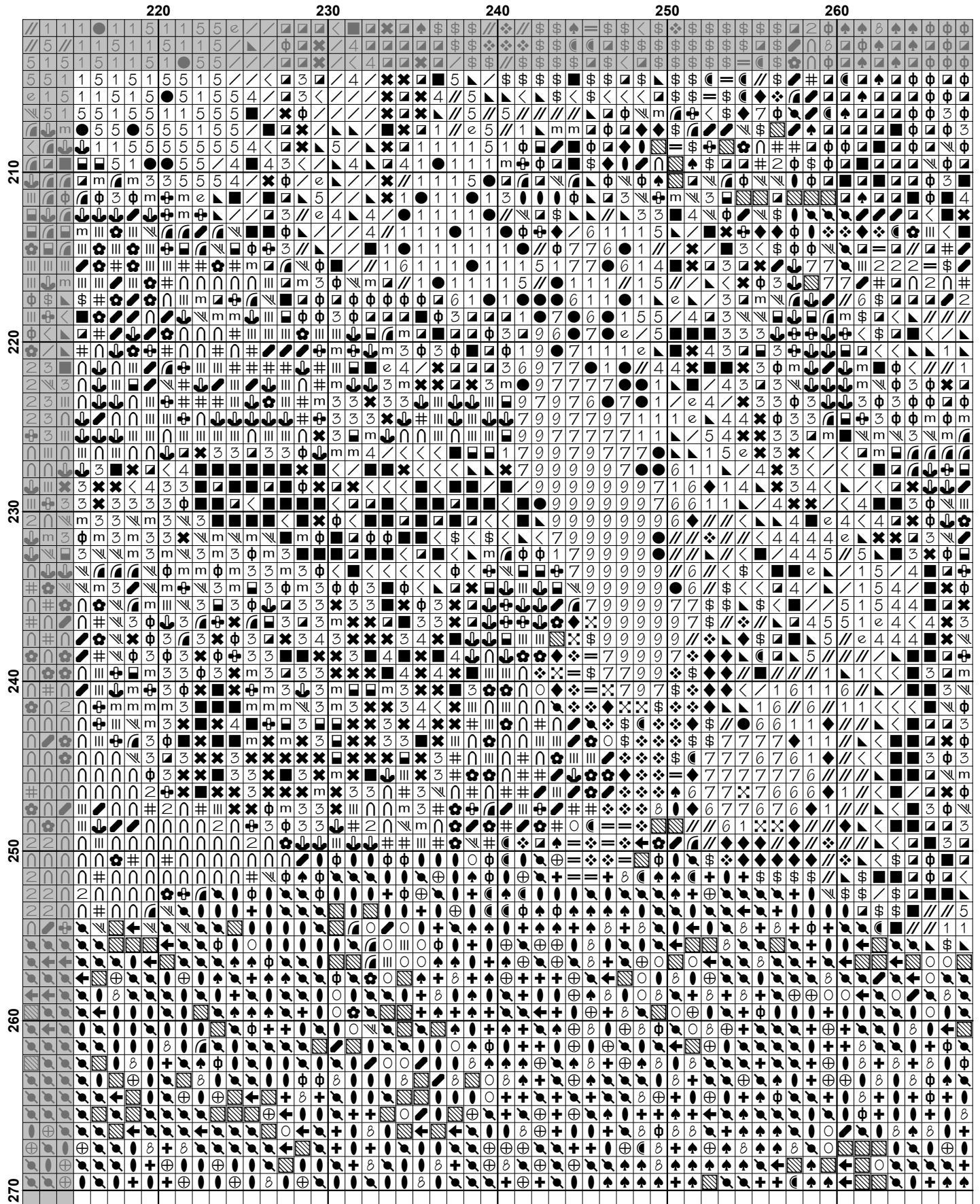


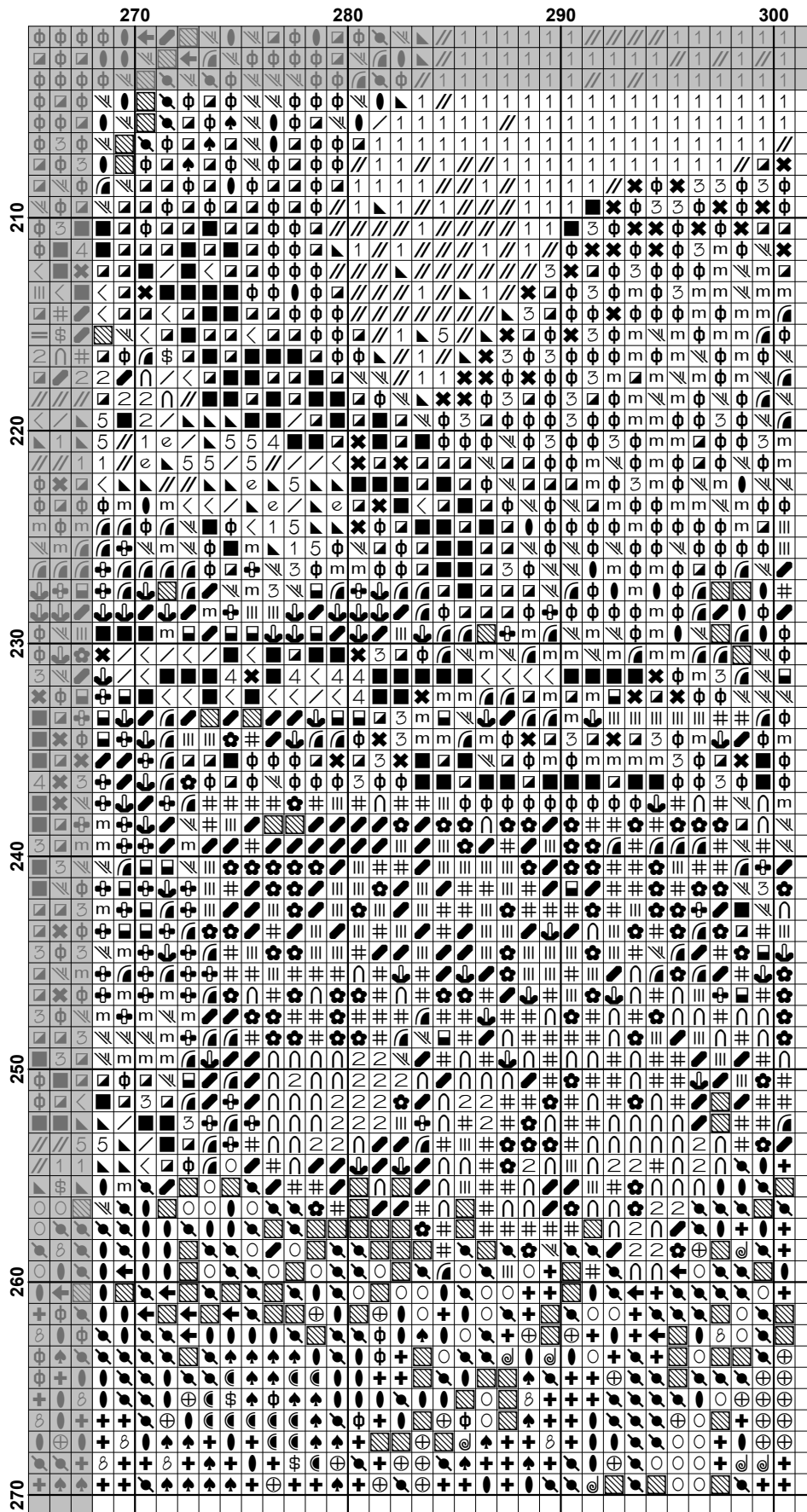



















Pattern Name: Scene in Braemar
Designed By: Artwork by Sir Edwin Landseer
Company: Artecy Cross Stitch
Copyright: Copyright Artecy Cross Stitch. All rights Reserved.
Fabric: Aida 14, White
 300w X 269h Stitches
Size(s): 14 Count, 21-3/8w X 19-1/8h in
 16 Count, 18-3/4w X 16-3/4h in
 18 Count, 16-5/8w X 14-7/8h in

Floss Used for Full Stitches:

Symbol	Strands	Type	Number	Color
	2	DMC	168	Pewter-VY LT
	2	DMC	169	Pewter-LT
	2	DMC	300	Mahogany-VY DK
	2	DMC	301	Mahogany-MD
	2	DMC	310	Black
	2	DMC	318	Steel Gray-LT
	2	DMC	370	Mustard-MD
	2	DMC	372	Mustard-LT
	2	DMC	414	Steel Gray-DK
	2	DMC	415	Pearl Gray
	2	DMC	420	Hazelnut Brown-DK
	2	DMC	436	Tan
	2	DMC	453	Shell Gray-LT
	2	DMC	524	Fern Green-VY LT
	2	DMC	535	Ash Gray-VY LT
	2	DMC	610	Drab Brown-DK
	2	DMC	612	Drab Brown-LT
	2	DMC	632	Desert Sand-UL VY DK
	2	DMC	640	Beige Gray-VY DK
	2	DMC	645	Beaver Gray-VY DK
	2	DMC	647	Beaver Gray-MD
	2	DMC	648	Beaver Gray-LT
	2	DMC	738	Tan-VY LT
	2	DMC	762	Pearl Gray-VY LT
	2	DMC	779	Cocoa-DK
	2	DMC	780	Topaz-UL VY DK
	2	DMC	801	Coffee Brown-DK
	2	DMC	822	Beige Gray-LT
	2	DMC	838	Beige Brown-VY DK
	2	DMC	840	Beige Brown-MD
	2	DMC	844	Beaver Brown-UL DK
	2	DMC	938	Coffee Brown-UL DK
	2	DMC	951	Tawny-LT
	2	DMC	975	Golden Brown-DK
	2	DMC	976	Golden Brown-MD
	2	DMC	3021	Brown Gray-VY DK
	2	DMC	3024	Brown Gray-VY LT
	2	DMC	3042	Antique Violet-LT
	2	DMC	3371	Black Brown
	2	DMC	3740	Antique Violet-DK
	2	DMC	3770	Tawny-VY LT
	2	DMC	3772	Desert Sand-VY DK
	2	DMC	3774	Desert Sand-VY LT
	2	DMC	3787	Brown Gray-DK
	2	DMC	3826	Golden Brown
	2	DMC	3860	Cocoa

Symbol	Strands	Type	Number	Color
		2	DMC 3861	Cocoa-LT
		2	DMC 3862	Mocha Beige-DK
		2	DMC 3864	Mocha Beige-LT
	0	2	DMC 3865	Winter White

Notes:

The middle of this pattern can be found on page 9 and is 151 stitches across and 136 stitches down.

Pattern layout using page numbers in top left.

1 2 3 4 5 6
7 8 9 10 11 12
13 14 15 16 17 18
19 20 21 22 23 24

Usage Summary

Strands Per Skein: 6

Skein Length: 313.0 in

Type	Number	Full	Half	Quarter	Petite	Back(in)	Str(in)	Spec(in)	French	Bead	Skein Est.
DMC 168	168	813	0	0	0	0.0	0.0	0.0	0	0	1.000
DMC 169	169	6229	0	0	0	0.0	0.0	0.0	0	0	3.000
DMC 300	300	269	0	0	0	0.0	0.0	0.0	0	0	1.000
DMC 301	301	275	0	0	0	0.0	0.0	0.0	0	0	1.000
DMC 310	310	610	0	0	0	0.0	0.0	0.0	0	0	1.000
DMC 318	318	7648	0	0	0	0.0	0.0	0.0	0	0	4.000
DMC 370	370	457	0	0	0	0.0	0.0	0.0	0	0	1.000
DMC 372	372	497	0	0	0	0.0	0.0	0.0	0	0	1.000
DMC 414	414	3428	0	0	0	0.0	0.0	0.0	0	0	2.000
DMC 415	415	3379	0	0	0	0.0	0.0	0.0	0	0	2.000
DMC 420	420	546	0	0	0	0.0	0.0	0.0	0	0	1.000
DMC 436	436	794	0	0	0	0.0	0.0	0.0	0	0	1.000
DMC 453	453	4186	0	0	0	0.0	0.0	0.0	0	0	2.000
DMC 524	524	637	0	0	0	0.0	0.0	0.0	0	0	1.000
DMC 535	535	168	0	0	0	0.0	0.0	0.0	0	0	1.000
DMC 610	610	1002	0	0	0	0.0	0.0	0.0	0	0	1.000
DMC 612	612	1374	0	0	0	0.0	0.0	0.0	0	0	1.000
DMC 632	632	1115	0	0	0	0.0	0.0	0.0	0	0	1.000
DMC 640	640	1527	0	0	0	0.0	0.0	0.0	0	0	1.000
DMC 645	645	414	0	0	0	0.0	0.0	0.0	0	0	1.000
DMC 647	647	1159	0	0	0	0.0	0.0	0.0	0	0	1.000
DMC 648	648	2153	0	0	0	0.0	0.0	0.0	0	0	1.000
DMC 738	738	531	0	0	0	0.0	0.0	0.0	0	0	1.000
DMC 762	762	935	0	0	0	0.0	0.0	0.0	0	0	1.000
DMC 779	779	2941	0	0	0	0.0	0.0	0.0	0	0	2.000
DMC 780	780	287	0	0	0	0.0	0.0	0.0	0	0	1.000
DMC 801	801	1053	0	0	0	0.0	0.0	0.0	0	0	1.000
DMC 822	822	1985	0	0	0	0.0	0.0	0.0	0	0	1.000
DMC 838	838	2854	0	0	0	0.0	0.0	0.0	0	0	2.000
DMC 840	840	982	0	0	0	0.0	0.0	0.0	0	0	1.000
DMC 844	844	504	0	0	0	0.0	0.0	0.0	0	0	1.000
DMC 938	938	1754	0	0	0	0.0	0.0	0.0	0	0	1.000
DMC 951	951	183	0	0	0	0.0	0.0	0.0	0	0	1.000
DMC 975	975	529	0	0	0	0.0	0.0	0.0	0	0	1.000
DMC 976	976	435	0	0	0	0.0	0.0	0.0	0	0	1.000
DMC 3021	3021	811	0	0	0	0.0	0.0	0.0	0	0	1.000
DMC 3024	3024	7062	0	0	0	0.0	0.0	0.0	0	0	4.000
DMC 3042	3042	5301	0	0	0	0.0	0.0	0.0	0	0	3.000
DMC 3371	3371	2551	0	0	0	0.0	0.0	0.0	0	0	2.000
DMC 3740	3740	913	0	0	0	0.0	0.0	0.0	0	0	1.000
DMC 3770	3770	505	0	0	0	0.0	0.0	0.0	0	0	1.000
DMC 3772	3772	1051	0	0	0	0.0	0.0	0.0	0	0	1.000
DMC 3774	3774	862	0	0	0	0.0	0.0	0.0	0	0	1.000
DMC 3787	3787	663	0	0	0	0.0	0.0	0.0	0	0	1.000
DMC 3826	3826	419	0	0	0	0.0	0.0	0.0	0	0	1.000
DMC 3860	3860	1436	0	0	0	0.0	0.0	0.0	0	0	1.000
DMC 3861	3861	2275	0	0	0	0.0	0.0	0.0	0	0	1.000
DMC 3862	3862	1653	0	0	0	0.0	0.0	0.0	0	0	1.000
DMC 3864	3864	1362	0	0	0	0.0	0.0	0.0	0	0	1.000
DMC 3865	3865	183	0	0	0	0.0	0.0	0.0	0	0	1.000