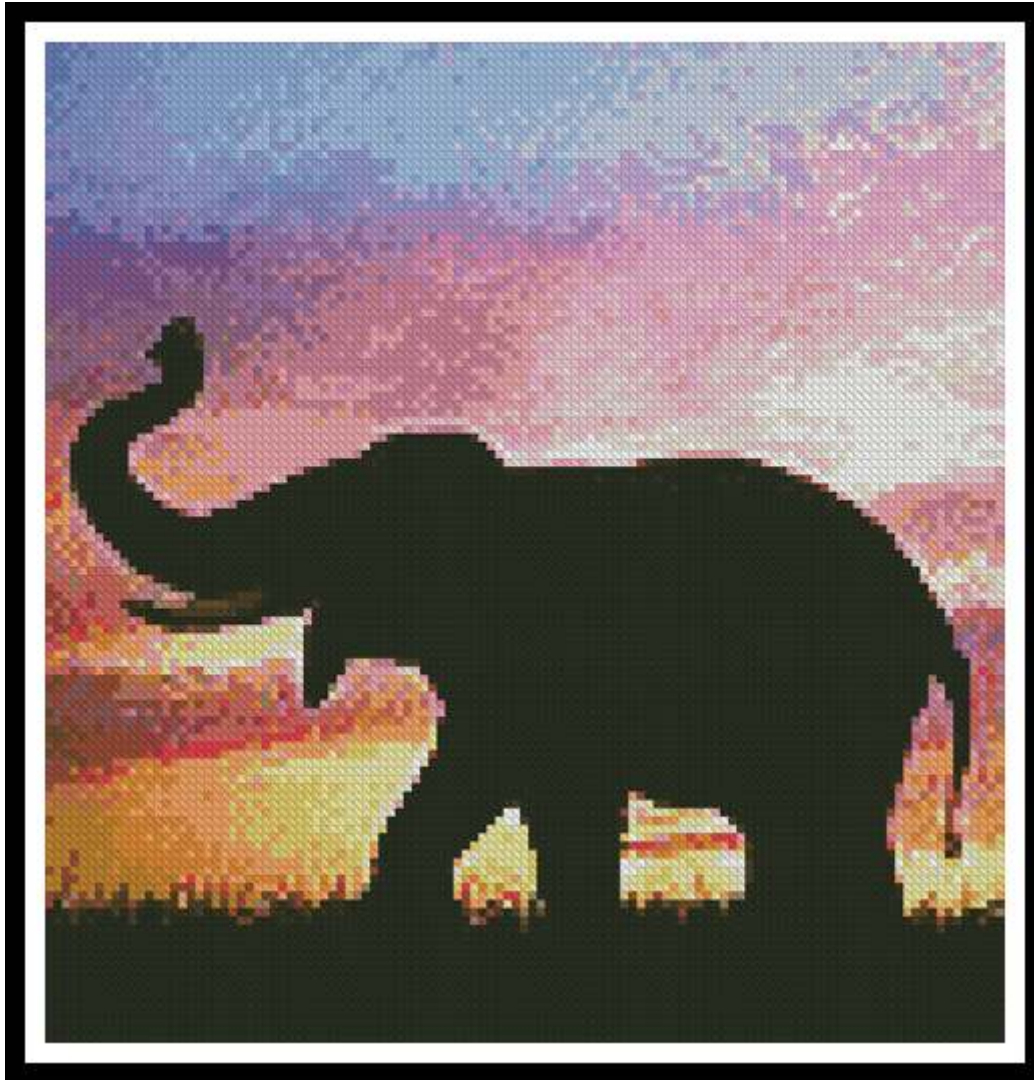


Artecy

CROSS STITCH

Silhouettes of Elephant - Crop



* Original image copyright of Matt Walford - Corbis.
Cross Stitch Design by S Clarke.

Completed Size = 115w x 120h Stitches

14 Count, 8.5w x 9h inches (22cm x 23cm)

16 Count, 7.5w x 7.5h inches (19cm x 19cm)

18 Count, 6.5w x 7h inches (17cm x 18cm)

Uses 38 DMC cotton colours. Only full cross stitches are used in this pattern.

Pattern Instructions

* This pattern can be worked on any fabric type, colour or count you prefer. To work out the size of the finished article, take the number of stitches wide and high and divide it by the count of your fabric (e.g. 14,16,18 count aida etc) to get the size in inches. Times it by 2.54 to get centimetres. We have the sizes in inches shown on the previous page. Also leave at least a few inches of fabric around each side of the design to assist in framing. The higher the fabric count the smaller the completed project will be.

* To put the pattern together look in the top and bottom corners. The page numbers in brackets show which page number it joins up to. Page 1 always starts at the top left hand side of the pattern. Our pages also have a shaded grey section. This indicates a 3 row overlap from adjoining pages to assist with reading the pattern. PLEASE DO NOT RESTITCH THIS AREA.

* You should begin at the centre of the pattern. To find the centre of the pattern it is just a matter of laying the pattern out and locating the arrows at the top and left hand side of the patterns, they are determined by dividing the stitch numbers wide and high in half. Where the two points meet in the middle, that is the centre.

* If you need more assistance to find the middle of your pattern or the page layout, please see the notes section on the colour symbol chart. The easiest way to stitch this pattern, as it has multiple pages, is to stitch one page at a time.

* We suggest using two strands of floss for each stitch and one strand for backstitching if the pattern calls for it.

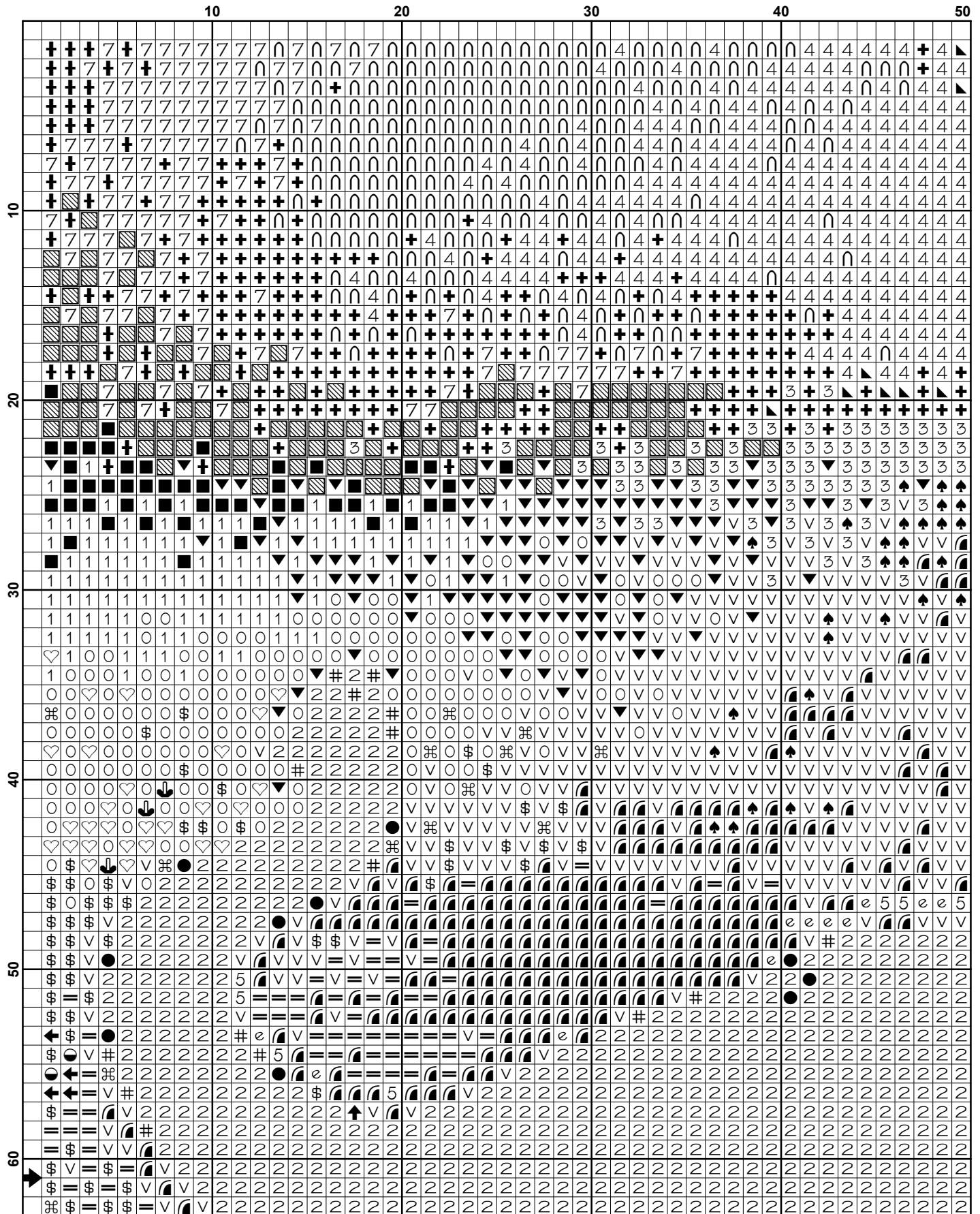
We hope you enjoy stitching our pattern.

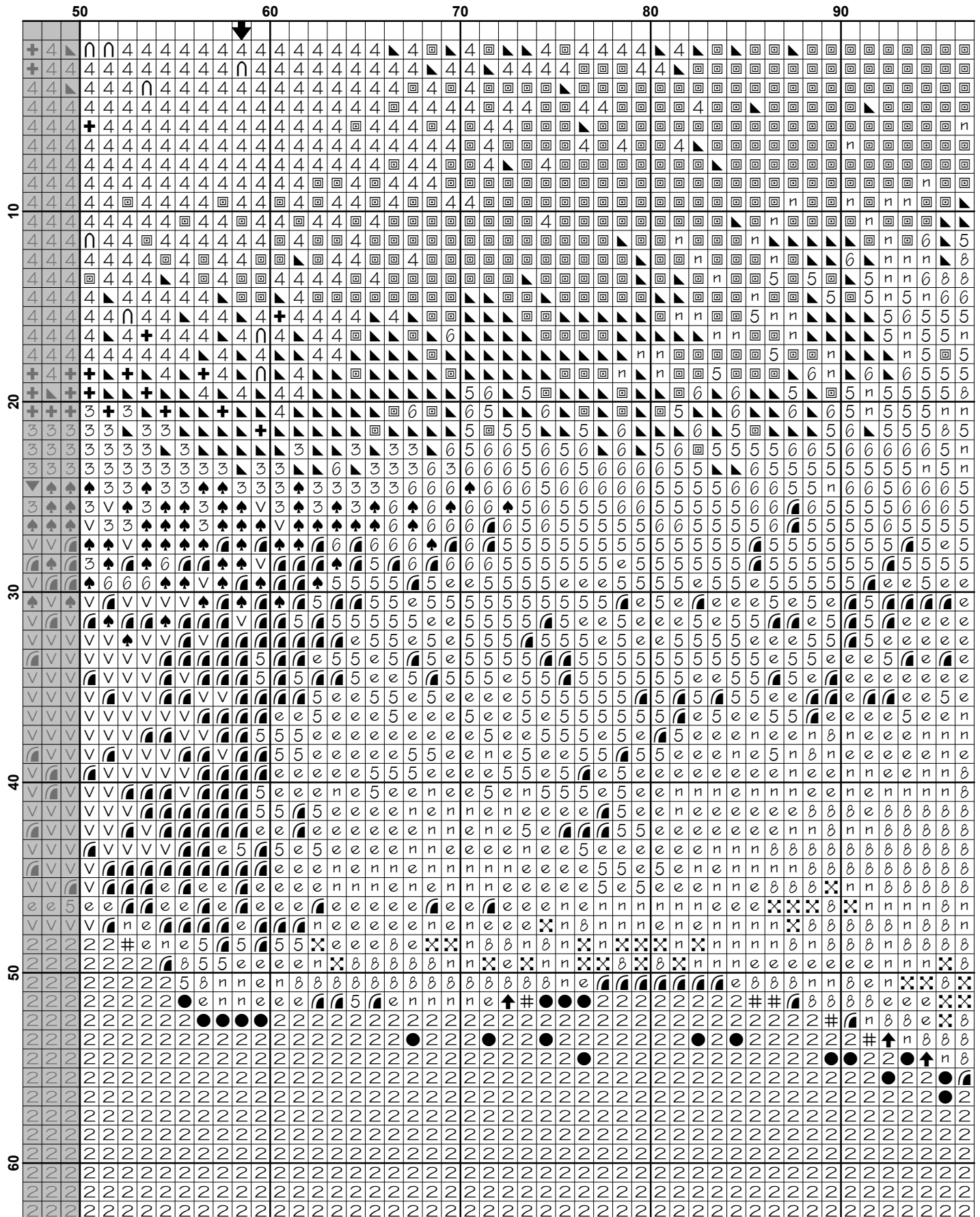
Thanks and Best Wishes
Tereena Clarke

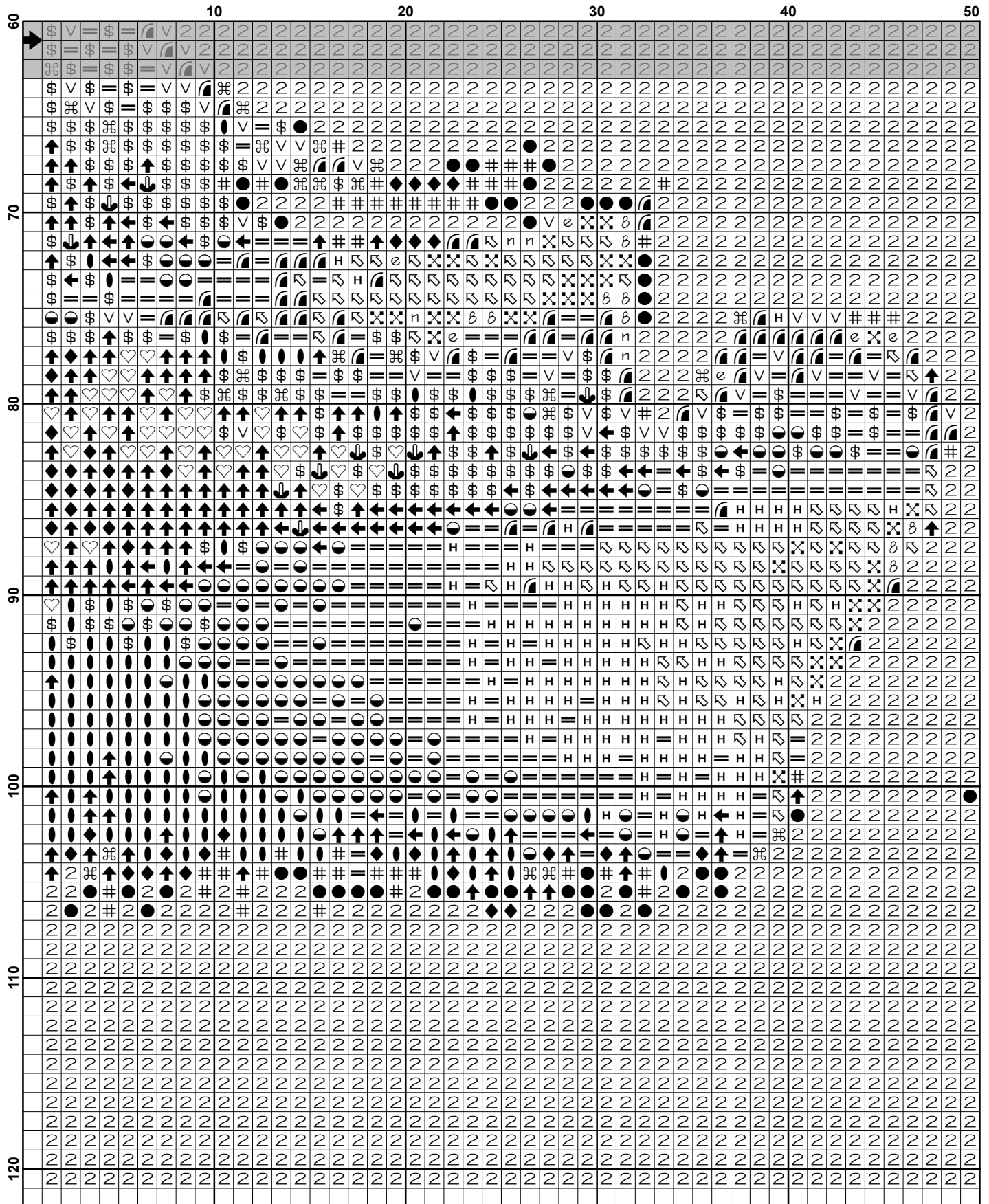
Artecy Cross Stitch
Po Box 3474
Tuggerah, NSW 2259
Australia

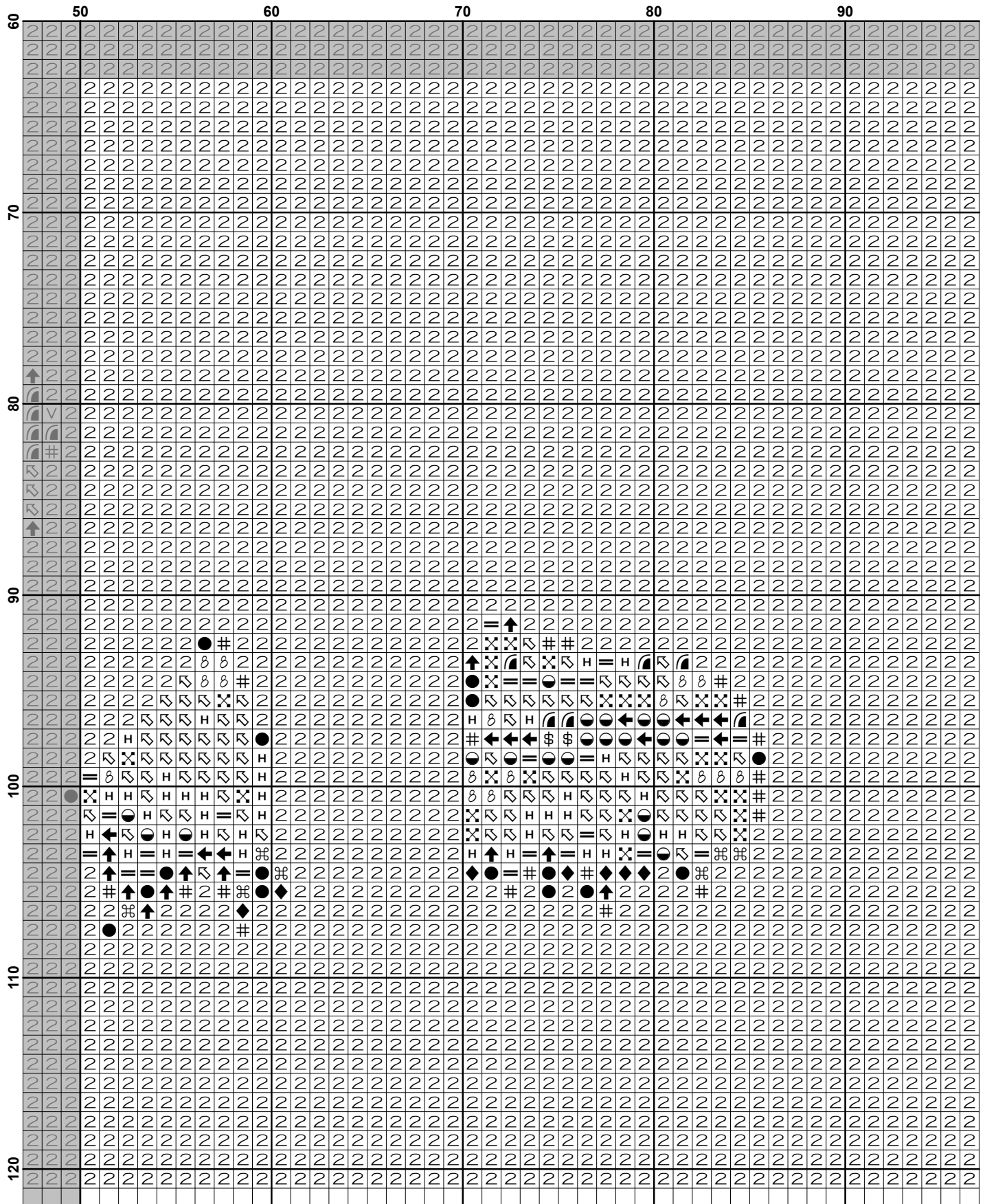
Websites: www.artecy.com and www.artecyshop.com
Email: artecy@artecy.com or stitch@artecyshop.com

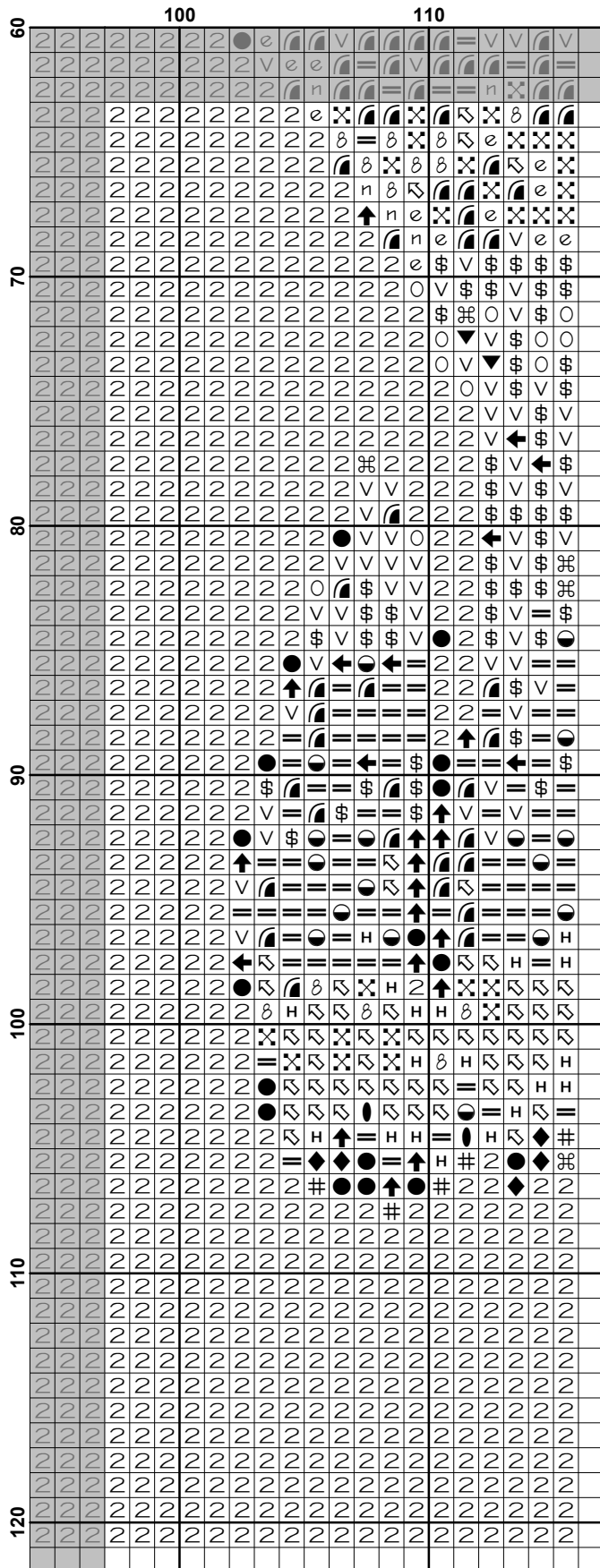
*Patterns are strictly for personal use only. It is against our copyright to make kits for sale from our designs or to sell, copy or redistribute this pattern in any form. You may not upload our patterns to any internet forums or groups or any other website. You may make 1 copy of this pattern for a working copy for your own personal use if needed.











Pattern Name: Silhouette of Elephant - Crop
Designed By: Artwork by Sara Moon
Company: Artecy Cross Stitch
Copyright: Copyright Artecy Cross Stitch. All rights Reserved.
Fabric: Aida 14, White
 115w X 120h Stitches
Size(s): 14 Count, 8-1/8w X 8-1/2h in
 16 Count, 7-1/8w X 7-1/2h in
 18 Count, 6-3/8w X 6-5/8h in

Floss Used for Full Stitches:

Symbol	Strands	Type	Number	Color
	2	DMC	155	Blue Violet-MD DK
	2	DMC	209	Lavender-DK
	2	DMC	210	Lavender-MD
	2	DMC	310	Black
	2	DMC	315	Antique Mauve-VY DK
	2	DMC	333	Blue Violet-VY DK
	2	DMC	340	Blue Violet-MD
	2	DMC	355	Terra Cotta-DK
	2	DMC	552	Violet-MD
	2	DMC	553	Violet
	2	DMC	600	Cranberry-VY DK
	2	DMC	605	Cranberry-VY LT
	2	DMC	722	Orange Spice-LT
	2	DMC	745	Yellow-LT Pale
	2	DMC	801	Coffee Brown-DK
	2	DMC	809	Delft Blue
	2	DMC	819	Baby Pink-LT
	2	DMC	938	Coffee Brown-UL DK
	2	DMC	963	Dusty Rose-UL VY LT
	2	DMC	976	Golden Brown-MD
	2	DMC	3326	Rose-LT
	2	DMC	3328	Salmon-DK
	2	DMC	3371	Black Brown
	2	DMC	3608	Plum-VY LT
	2	DMC	3609	Plum-UL LT
	2	DMC	3688	Mauve-MD
	2	DMC	3747	Blue Violet-VY LT
	2	DMC	3770	Tawny-VY LT
	2	DMC	3801	Christmas Red-LT
	2	DMC	3822	Straw-LT
	2	DMC	3835	Grape-MD
	2	DMC	3838	Lavender Blue-DK
	2	DMC	3839	Lavender Blue-MD
	2	DMC	3840	Lavender Blue-LT
	2	DMC	3853	Autumn Gold-DK
	2	DMC	3863	Mocha Beige-MD
	2	DMC	3865	Winter White

Notes:

The middle of this pattern can be found on page 2 and is 59 stitches across and 61 stitches down.

Pattern layout using page numbers in top left.

1 2 3
 4 5 6

Usage Summary

Strands Per Skein: 6

Skein Length: 313.0 in

Type	Number	Full	Half	Quarter	Petite	Back(in)	Str(in)	Spec(in)	French	Bead	Skein Est.
DMC 155	155	140	0	0	0	0.0	0.0	0.0	0	0	1.000
DMC 209	209	125	0	0	0	0.0	0.0	0.0	0	0	1.000
DMC 210	210	253	0	0	0	0.0	0.0	0.0	0	0	1.000
DMC 310	310	5419	0	0	0	0.0	0.0	0.0	0	0	3.000
DMC 315	315	69	0	0	0	0.0	0.0	0.0	0	0	1.000
DMC 333	333	51	0	0	0	0.0	0.0	0.0	0	0	1.000
DMC 340	340	236	0	0	0	0.0	0.0	0.0	0	0	1.000
DMC 355	355	175	0	0	0	0.0	0.0	0.0	0	0	1.000
DMC 552	552	119	0	0	0	0.0	0.0	0.0	0	0	1.000
DMC 553	553	137	0	0	0	0.0	0.0	0.0	0	0	1.000
DMC 600	600	14	0	0	0	0.0	0.0	0.0	0	0	1.000
DMC 605	605	566	0	0	0	0.0	0.0	0.0	0	0	1.000
DMC 722	722	460	0	0	0	0.0	0.0	0.0	0	0	1.000
DMC 745	745	293	0	0	0	0.0	0.0	0.0	0	0	1.000
DMC 801	801	52	0	0	0	0.0	0.0	0.0	0	0	1.000
DMC 809	809	259	0	0	0	0.0	0.0	0.0	0	0	1.000
DMC 819	819	388	0	0	0	0.0	0.0	0.0	0	0	1.000
DMC 938	938	96	0	0	0	0.0	0.0	0.0	0	0	1.000
DMC 963	963	520	0	0	0	0.0	0.0	0.0	0	0	1.000
DMC 976	976	131	0	0	0	0.0	0.0	0.0	0	0	1.000
DMC 3326	3326	626	0	0	0	0.0	0.0	0.0	0	0	1.000
DMC 3328	3328	300	0	0	0	0.0	0.0	0.0	0	0	1.000
DMC 3371	3371	113	0	0	0	0.0	0.0	0.0	0	0	1.000
DMC 3608	3608	86	0	0	0	0.0	0.0	0.0	0	0	1.000
DMC 3609	3609	190	0	0	0	0.0	0.0	0.0	0	0	1.000
DMC 3688	3688	551	0	0	0	0.0	0.0	0.0	0	0	1.000
DMC 3747	3747	464	0	0	0	0.0	0.0	0.0	0	0	1.000
DMC 3770	3770	139	0	0	0	0.0	0.0	0.0	0	0	1.000
DMC 3801	3801	77	0	0	0	0.0	0.0	0.0	0	0	1.000
DMC 3822	3822	193	0	0	0	0.0	0.0	0.0	0	0	1.000
DMC 3835	3835	209	0	0	0	0.0	0.0	0.0	0	0	1.000
DMC 3838	3838	43	0	0	0	0.0	0.0	0.0	0	0	1.000
DMC 3839	3839	141	0	0	0	0.0	0.0	0.0	0	0	1.000
DMC 3840	3840	533	0	0	0	0.0	0.0	0.0	0	0	1.000
DMC 3853	3853	184	0	0	0	0.0	0.0	0.0	0	0	1.000
DMC 3863	3863	52	0	0	0	0.0	0.0	0.0	0	0	1.000
DMC 3865	3865	396	0	0	0	0.0	0.0	0.0	0	0	1.000