

Artecy

CROSS STITCH

Silhouette of Woman



* Original image© Vadim Tissen - Vectorstock
Cross Stitch Design by Tereena Clarke.

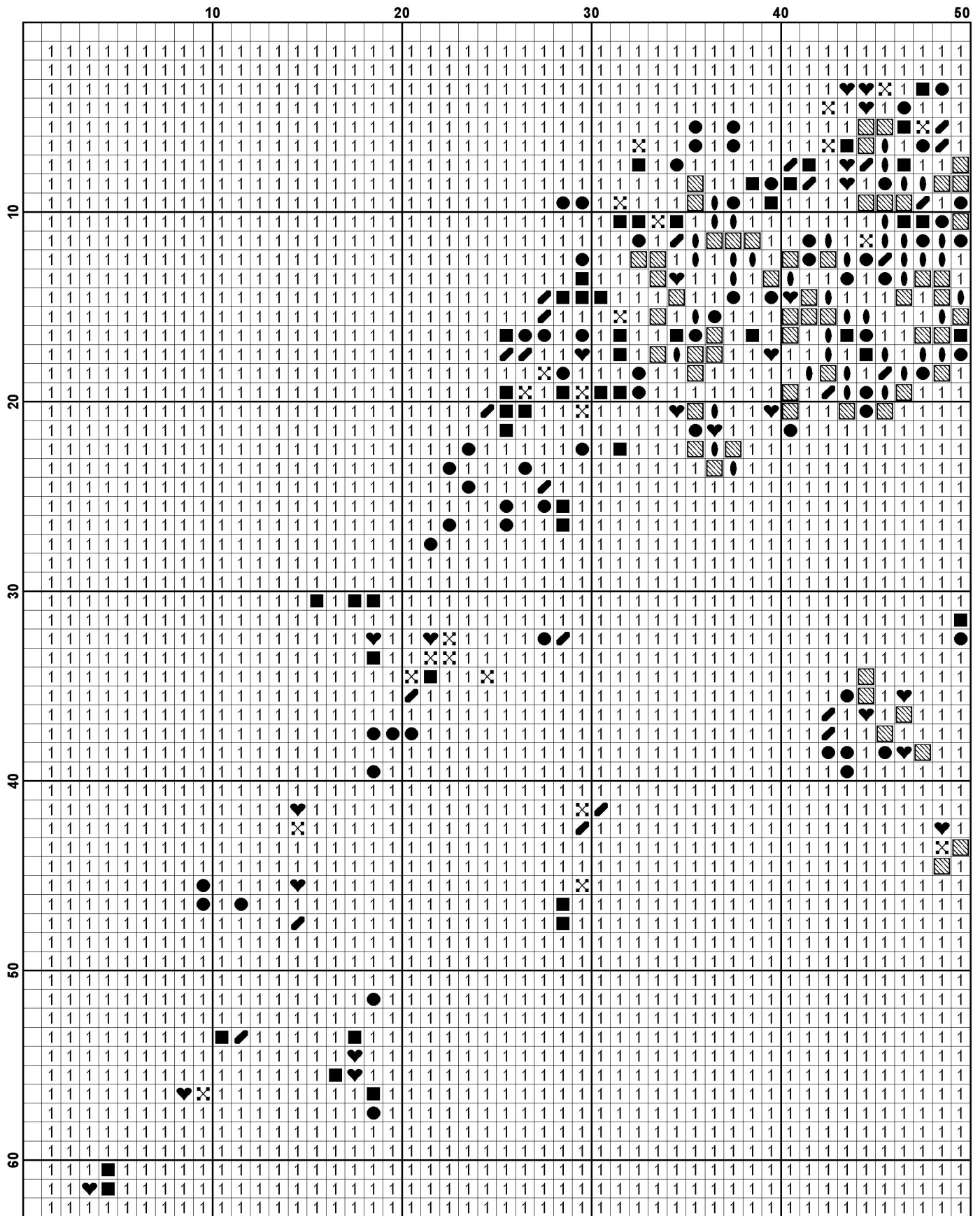
Completed Size = 163w x 299h Stitches

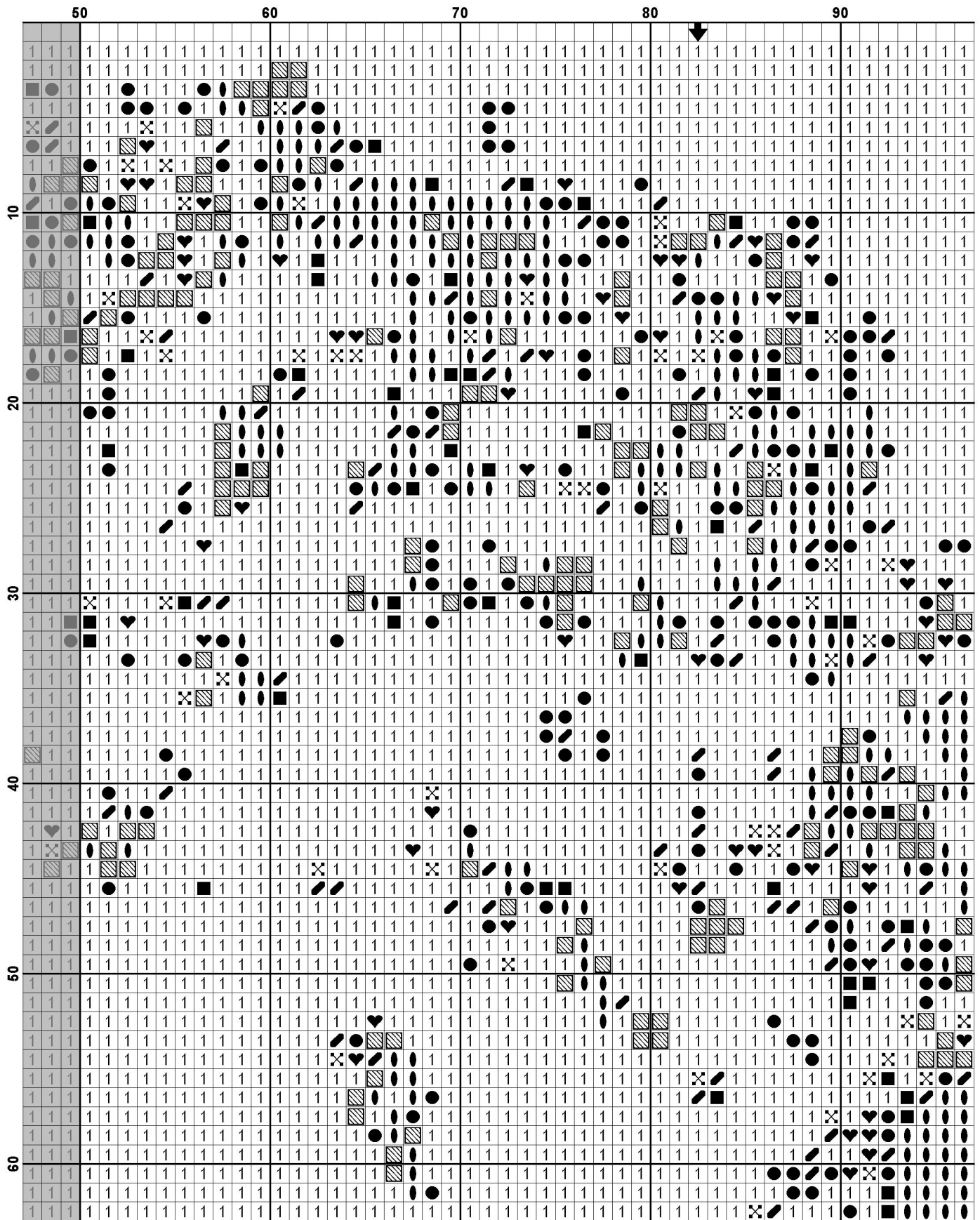
14 Count, 12w x 21.5h inches (30cm x 55cm)

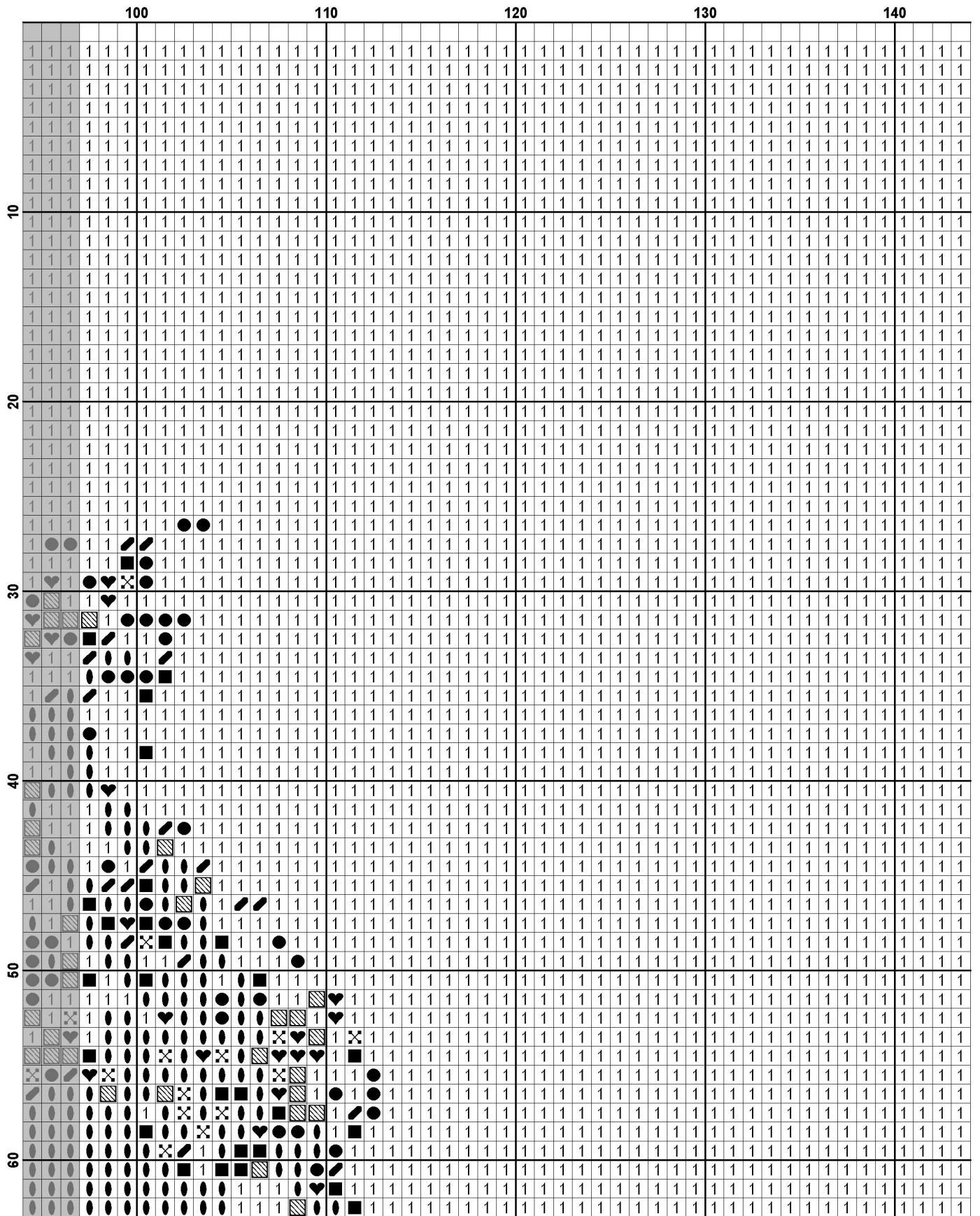
16 Count, 10.5w x 19h inches (27cm x 48cm)

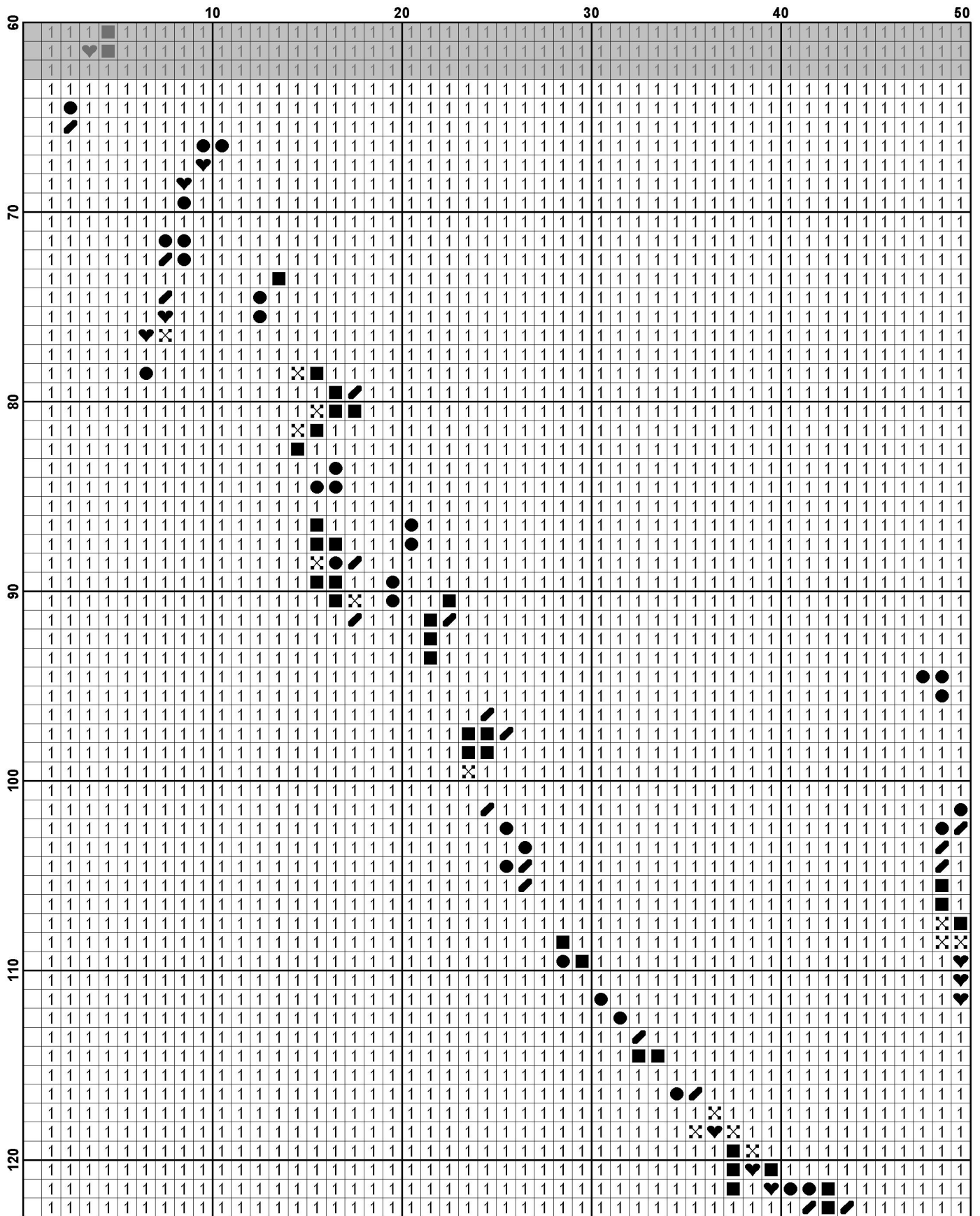
18 Count, 9w x 17h inches (23cm x 43cm)

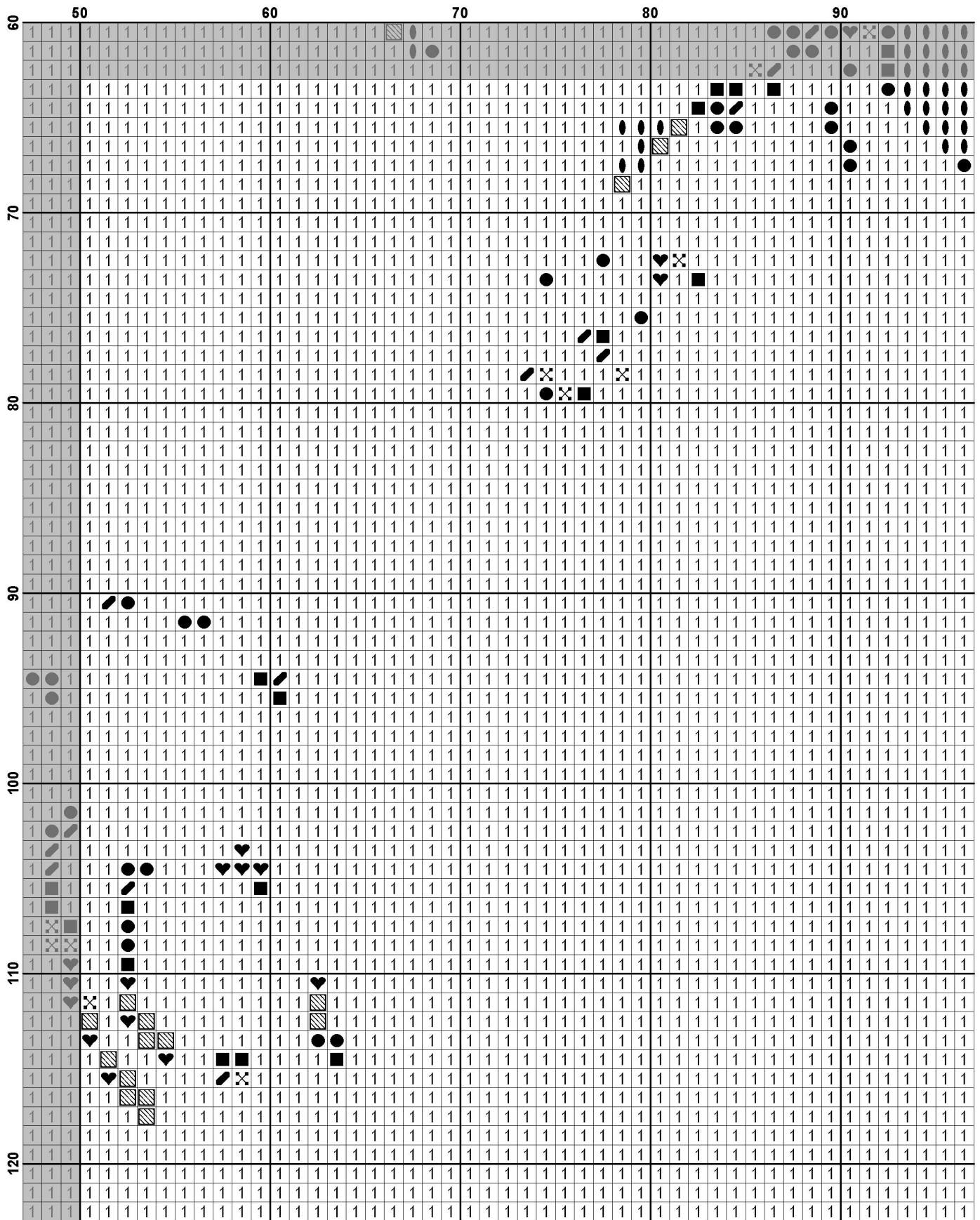
Uses 8 DMC cotton colours. Only full cross stitches are used in this pattern.

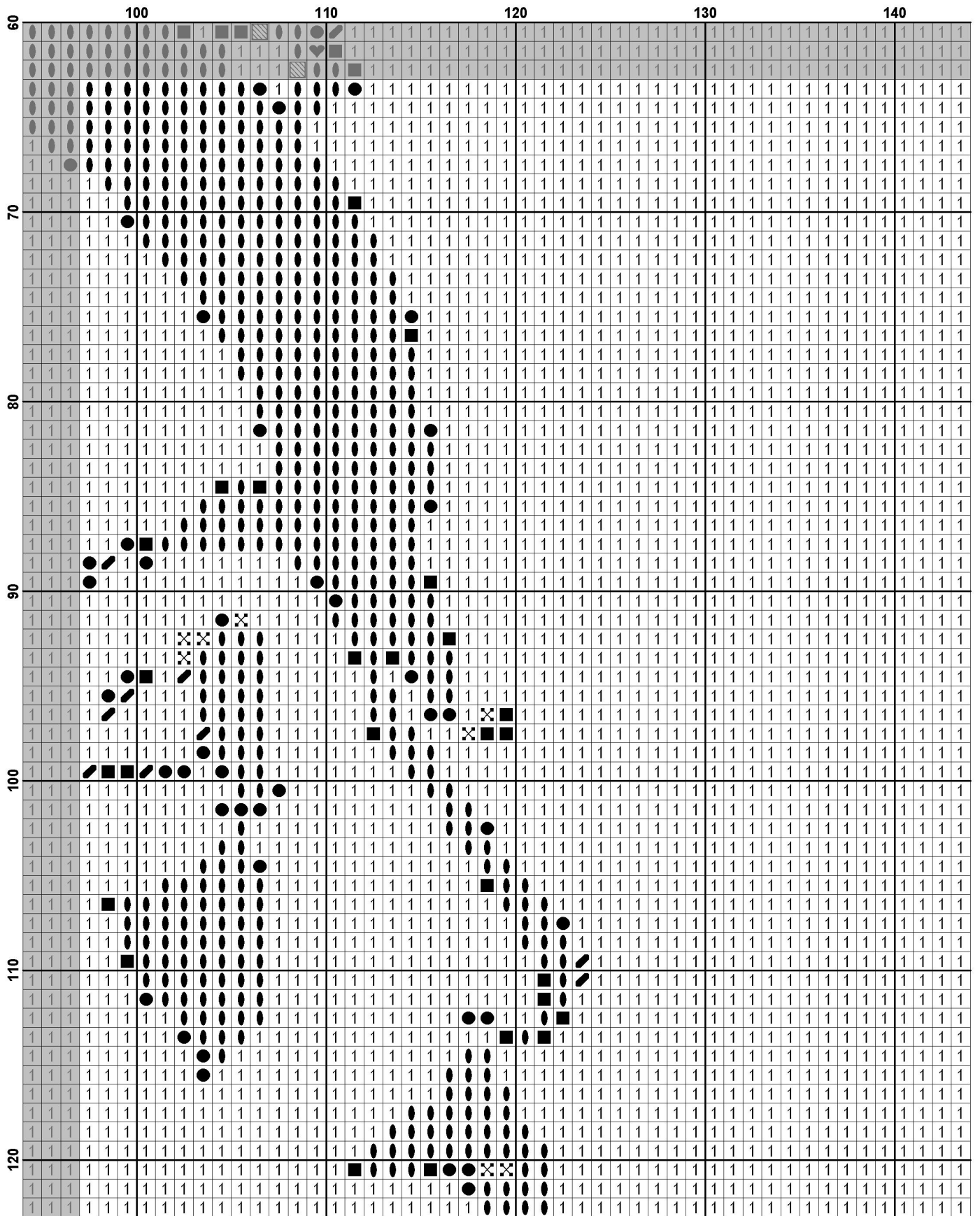


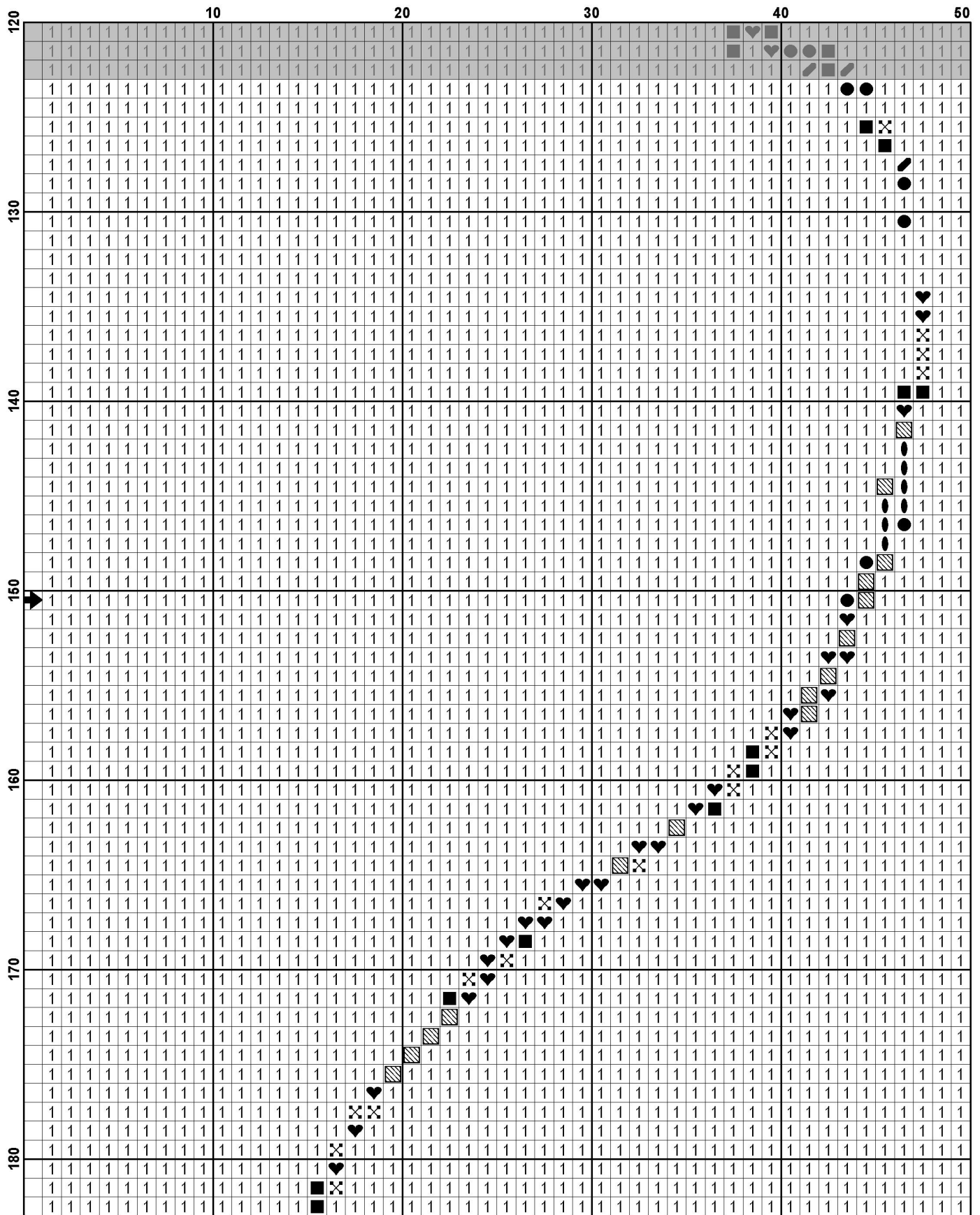


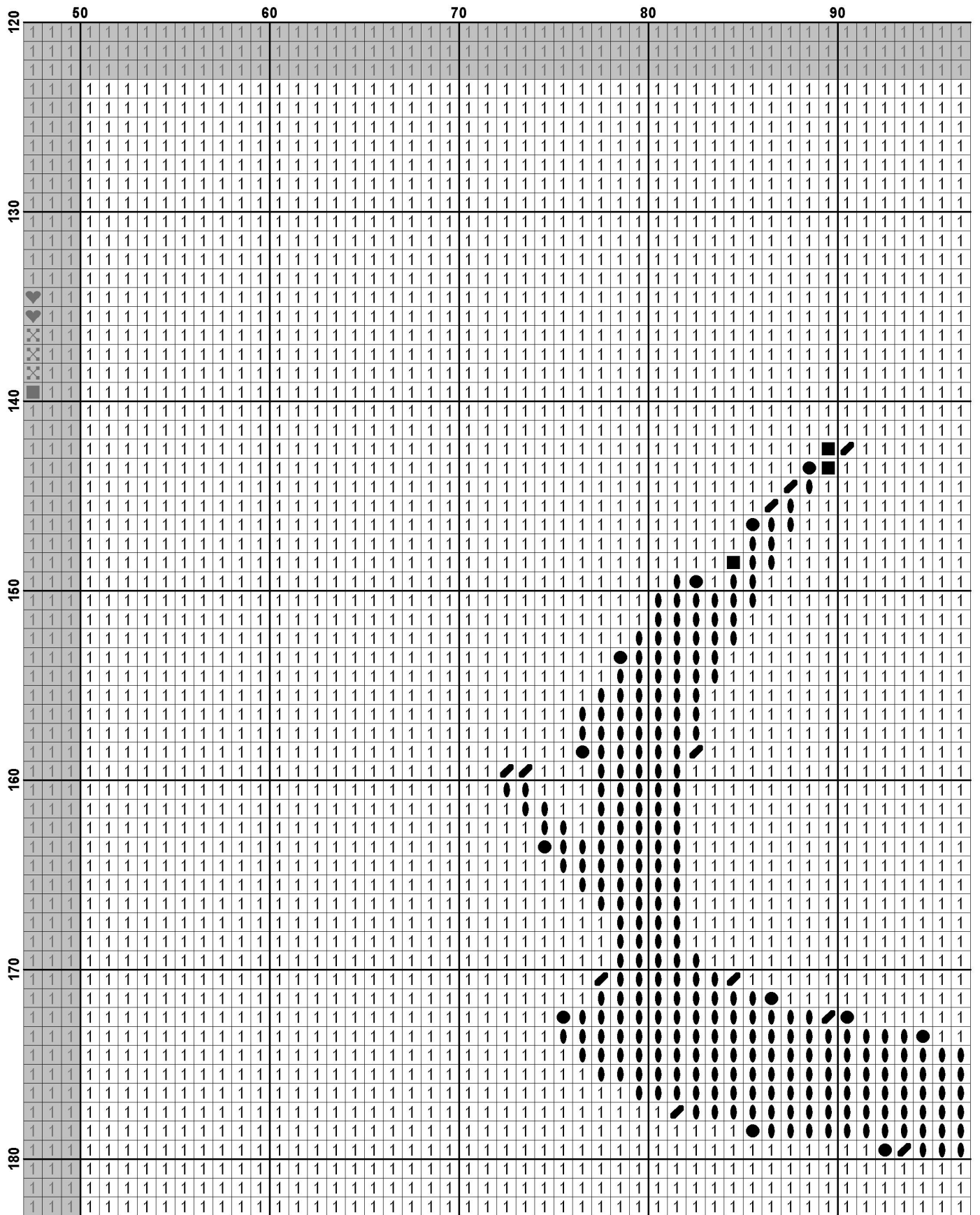


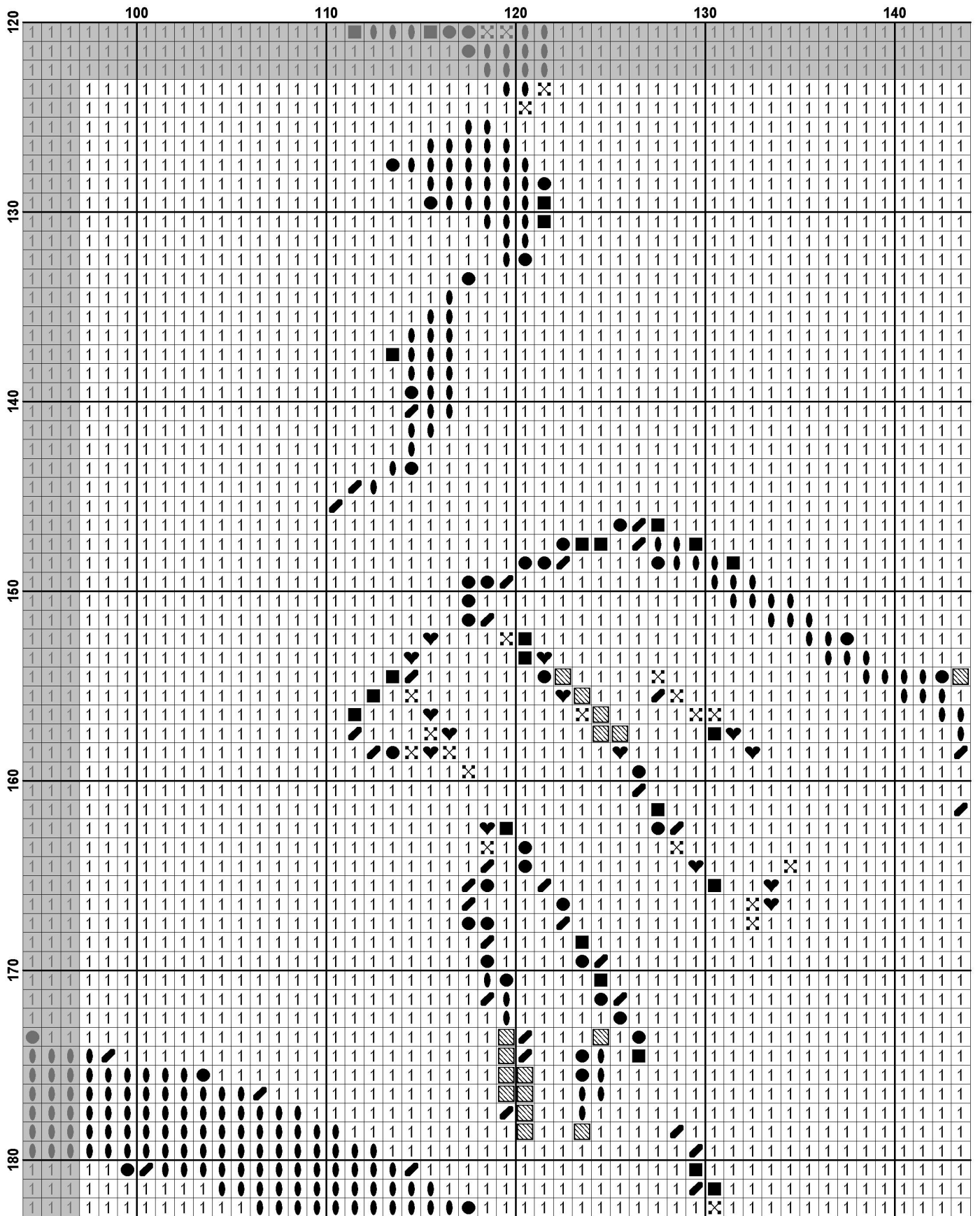


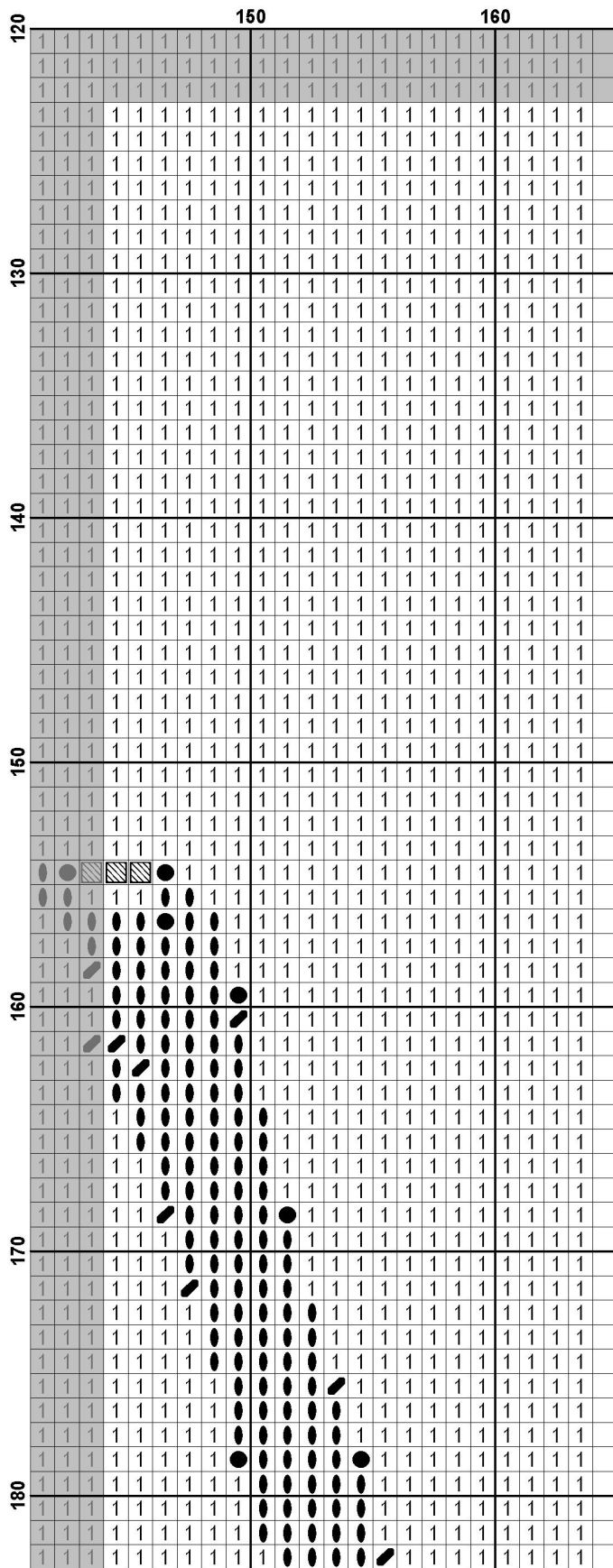


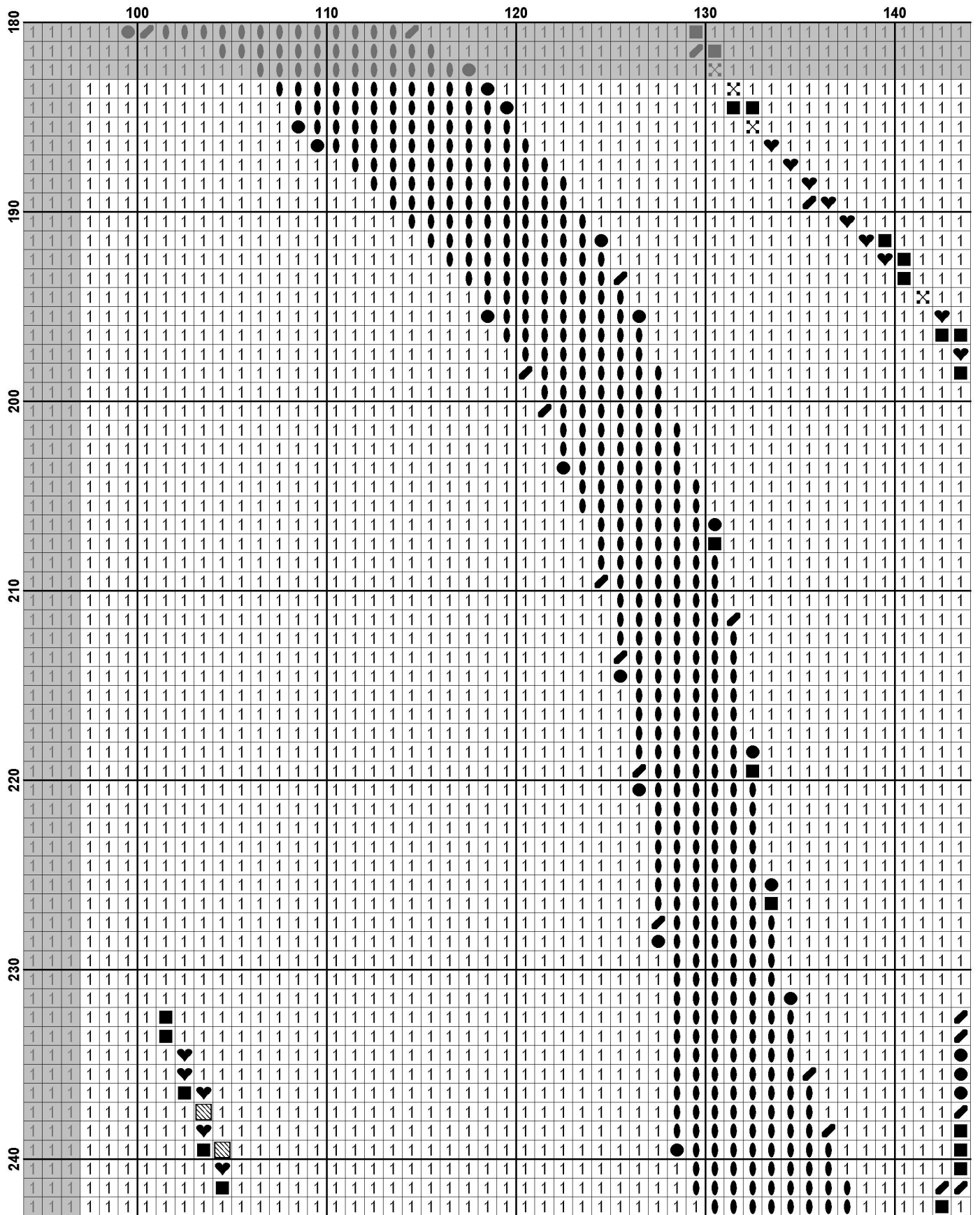


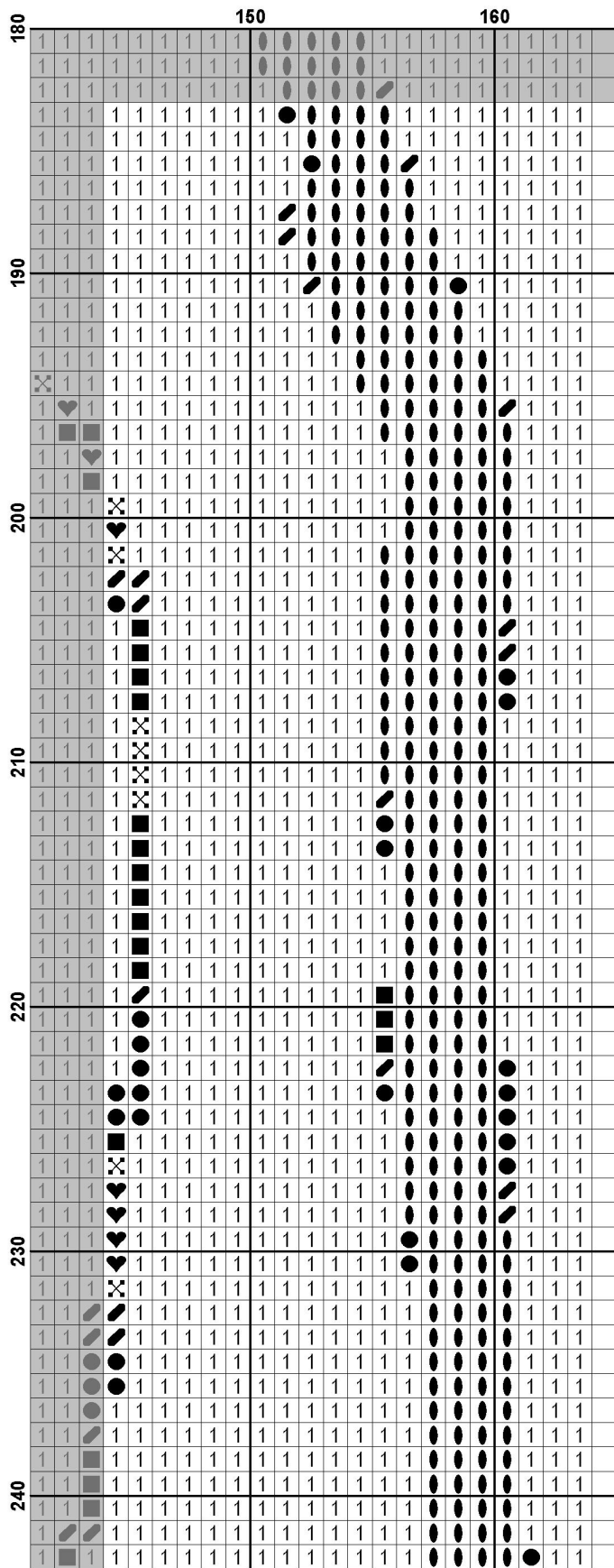


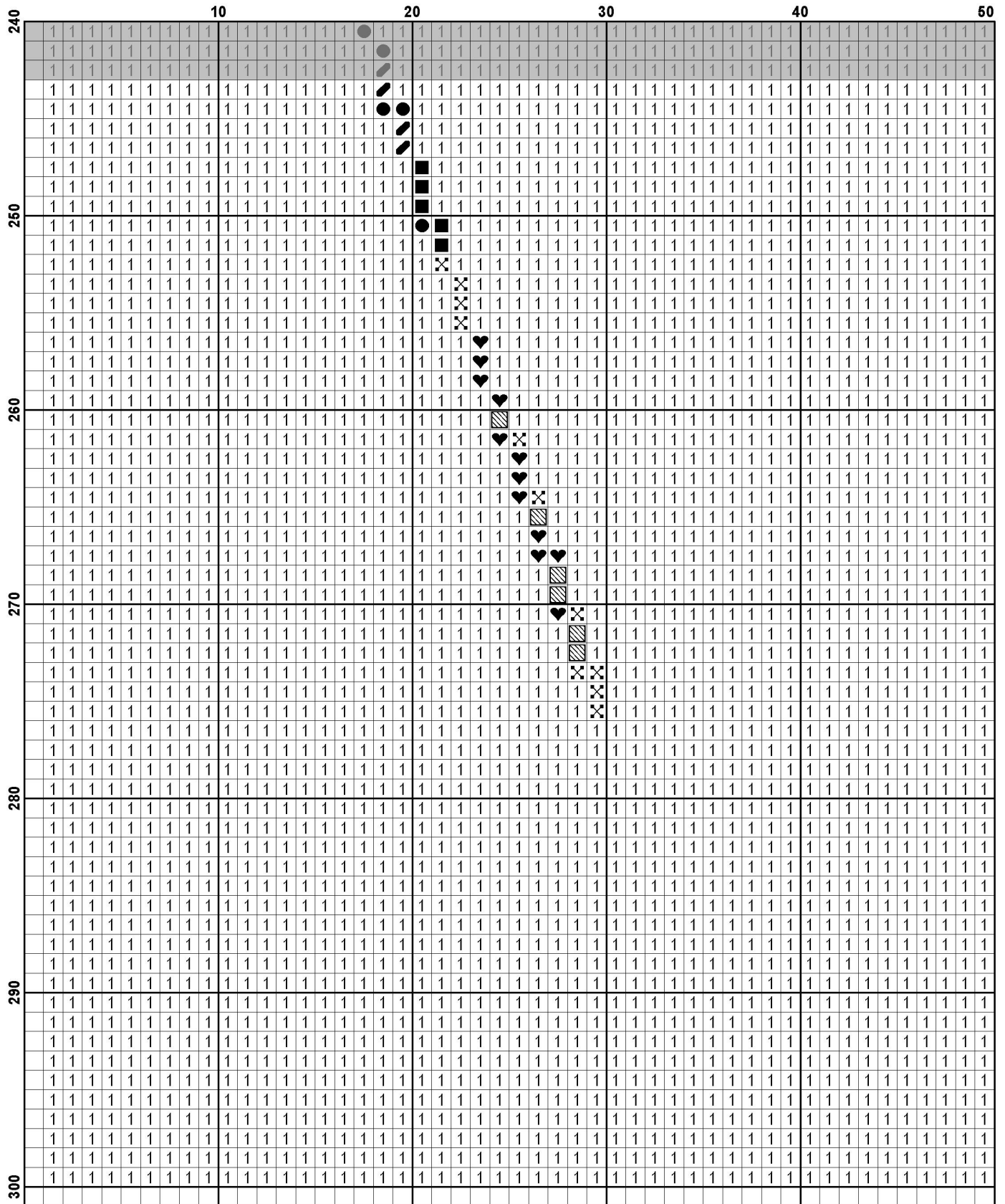


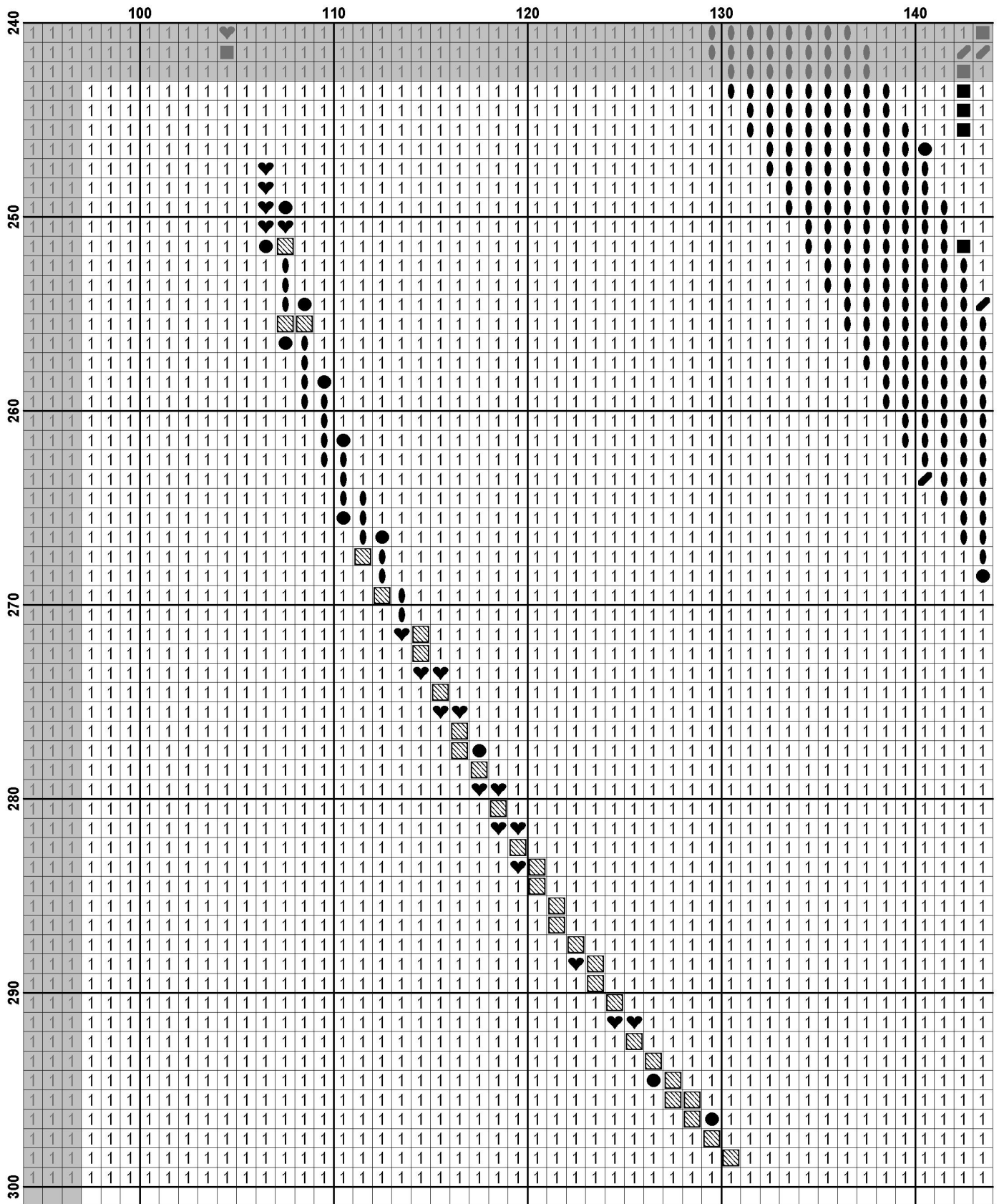


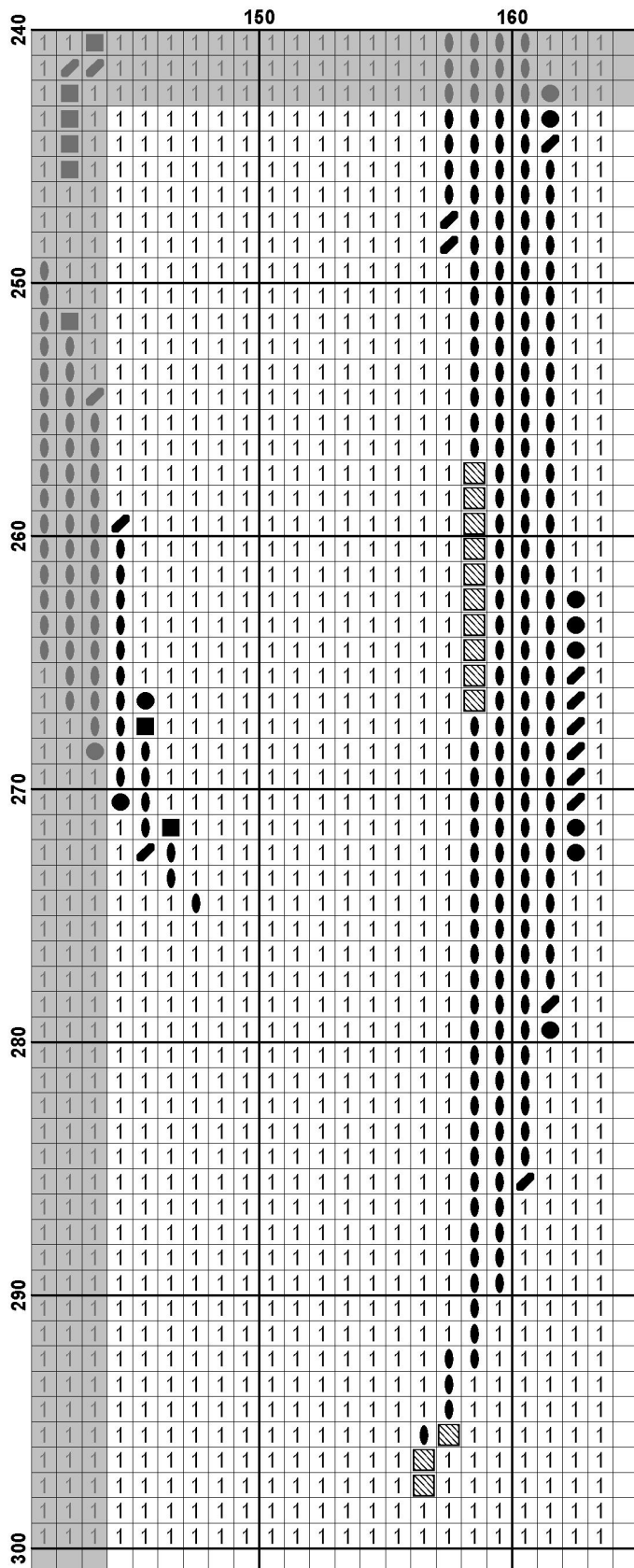



























Pattern Name: Silhouette of Woman
Designed By: Artwork by Vadim Tissen-Vectorstock
Company: Artecy Cross Stitch
Copyright: Copyright Artecy Cross Stitch. All rights Reserved.
Fabric: Aida 14, White
163w X 299h Stitches
Size(s) : 14 Count, 11-5/8w X 21-1/4h in
16 Count, 10-1/8w X 18-5/8h in
18 Count, 9w X 16-1/2h in

Floss Used for Full Stitches:

Symbol	Strands	Type	Number	Color
	1	2	DMC 310	Black
		2	DMC 317	Pewter Gray
		2	DMC 318	Steel Gray-LT
		2	DMC 413	Pewter Gray-DK
		2	DMC 414	Steel Gray-DK
		2	DMC 415	Pearl Gray
		2	DMC 762	Pearl Gray-VY LT
		2	DMC 3799	Pewter Gray-VY DK

Notes:

The middle of this pattern can be found on page 10 and is 83 stitches across and 151 stitches down.

Pattern layout using page numbers in top left.

1 2 3 4
5 6 7 8
9 10 11 12
13 14 15 16
17 18 19 20

Usage Summary

Strands Per Skein: 6

Skein Length: 313.0 in

Type	Number	Full	Half	Quarter	Petite	Back(in)	Str(in)	Spec(in)	French	Bead	Skein Est.
■ DMC	310	44292	0	0	0	0.0	0.0	0.0	0	0	25.000
■ DMC	317	291	0	0	0	0.0	0.0	0.0	0	0	1.000
■ DMC	318	207	0	0	0	0.0	0.0	0.0	0	0	1.000
■ DMC	413	270	0	0	0	0.0	0.0	0.0	0	0	1.000
■ DMC	414	173	0	0	0	0.0	0.0	0.0	0	0	1.000
■ DMC	415	347	0	0	0	0.0	0.0	0.0	0	0	1.000
■ DMC	762	2628	0	0	0	0.0	0.0	0.0	0	0	2.000
■ DMC	3799	529	0	0	0	0.0	0.0	0.0	0	0	1.000