

Artecy

CROSS STITCH

Sophie Nariskina

Adapted from Artwork by Moritz Michael Daffinger



Cross Stitch Design by Tereena Clarke.

Completed Size = 196w x 244h Stitches

14 Count, 14w x 17.5h inches (36cm x 44cm)

16 Count, 12.5w x 15.5h inches (32cm x 39cm)

18 Count, 11w x 13.5h inches (28cm x 34cm)

Uses 39 DMC cotton colours. Only full cross stitches are used in this pattern.

Pattern Instructions

* This pattern can be worked on any fabric type, colour or count you prefer. To work out the size of the finished article, take the number of stitches wide and high and divide it by the count of your fabric (e.g. 14,16,18 count aida etc) to get the size in inches. Times it by 2.54 to get centimetres. We have the sizes in inches shown on the previous page. Also leave at least a few inches of fabric around each side of the design to assist in framing. The higher the fabric count the smaller the completed project will be.

* To put the pattern together look in the top and bottom corners. The page numbers in brackets show which page number it joins up to. Page 1 always starts at the top left hand side of the pattern. Our pages also have a shaded grey section. This indicates a 3 row overlap from adjoining pages to assist with reading the pattern. PLEASE DO NOT RESTITCH THIS AREA.

* You should begin at the centre of the pattern. To find the centre of the pattern it is just a matter of laying the pattern out and locating the arrows at the top and left hand side of the patterns, they are determined by dividing the stitch numbers wide and high in half. Where the two points meet in the middle, that is the centre.

* If you need more assistance to find the middle of your pattern or the page layout, please see the notes section on the colour symbol chart. The easiest way to stitch this pattern, as it has multiple pages, is to stitch one page at a time.

* We suggest using two strands of floss for each stitch and one strand for backstitching if the pattern calls for it.

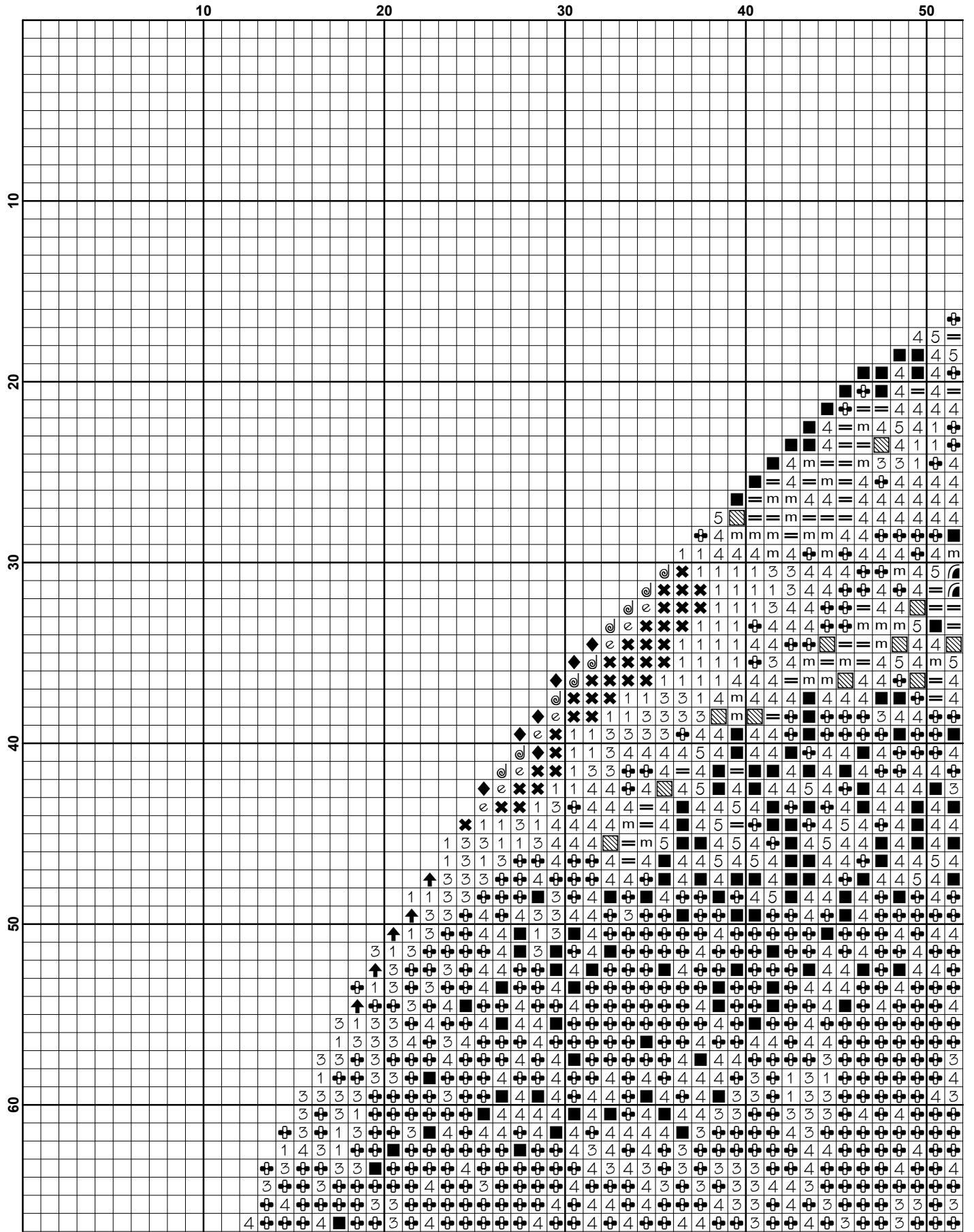
We hope you enjoy stitching our pattern.

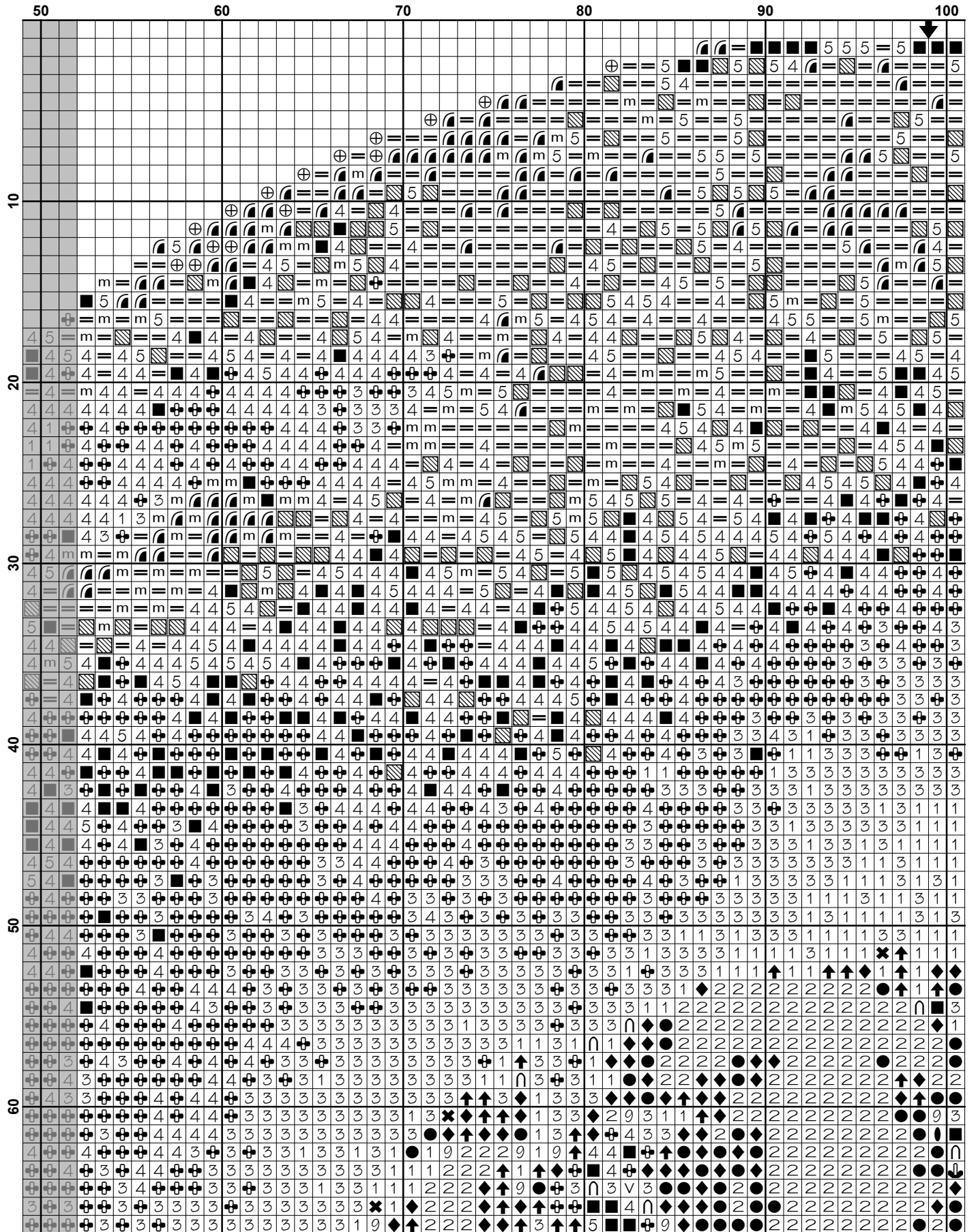
Thanks and Best Wishes
Tereena Clarke

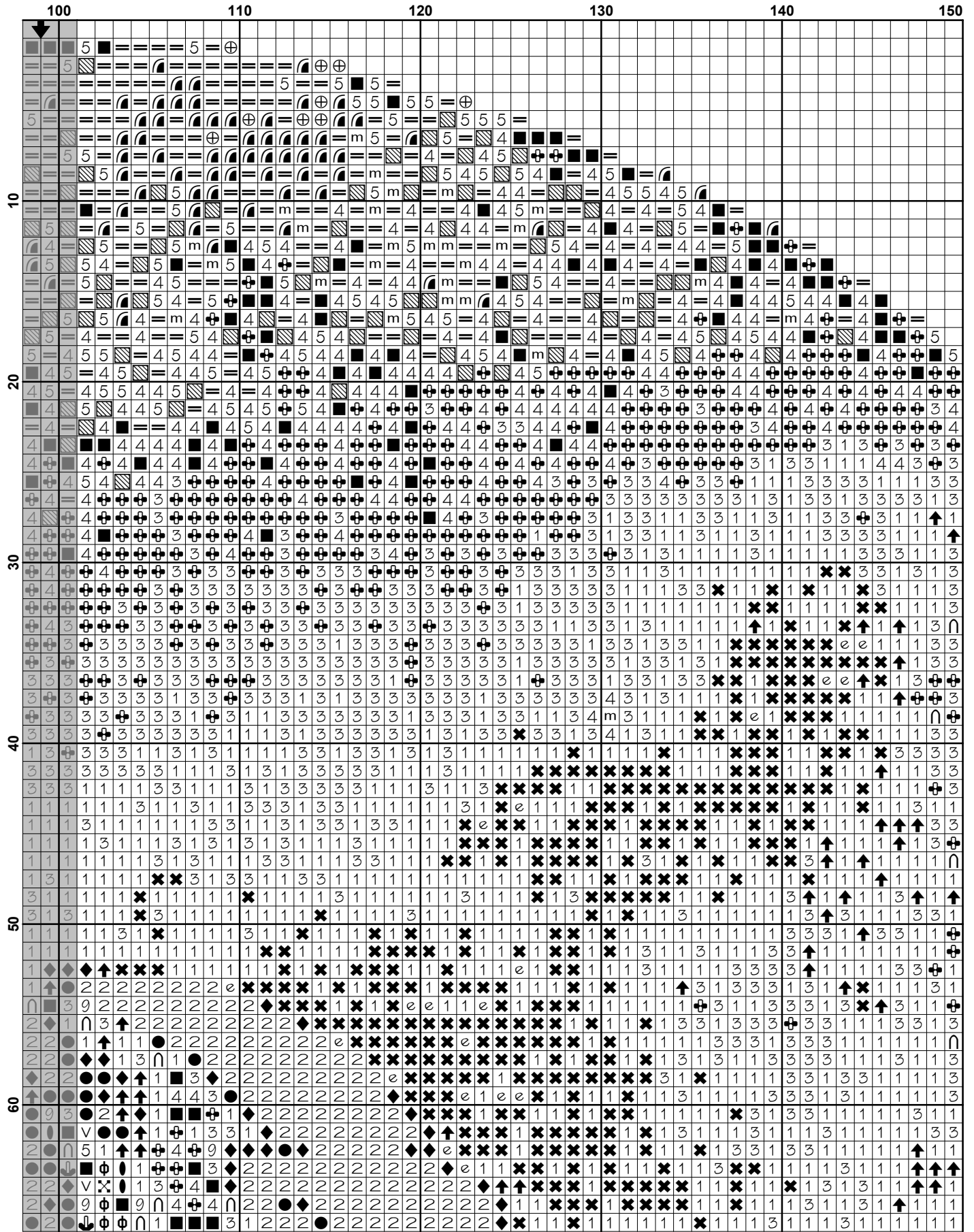
Artecy Cross Stitch
Po Box 3474
Tuggerah, NSW 2259
Australia

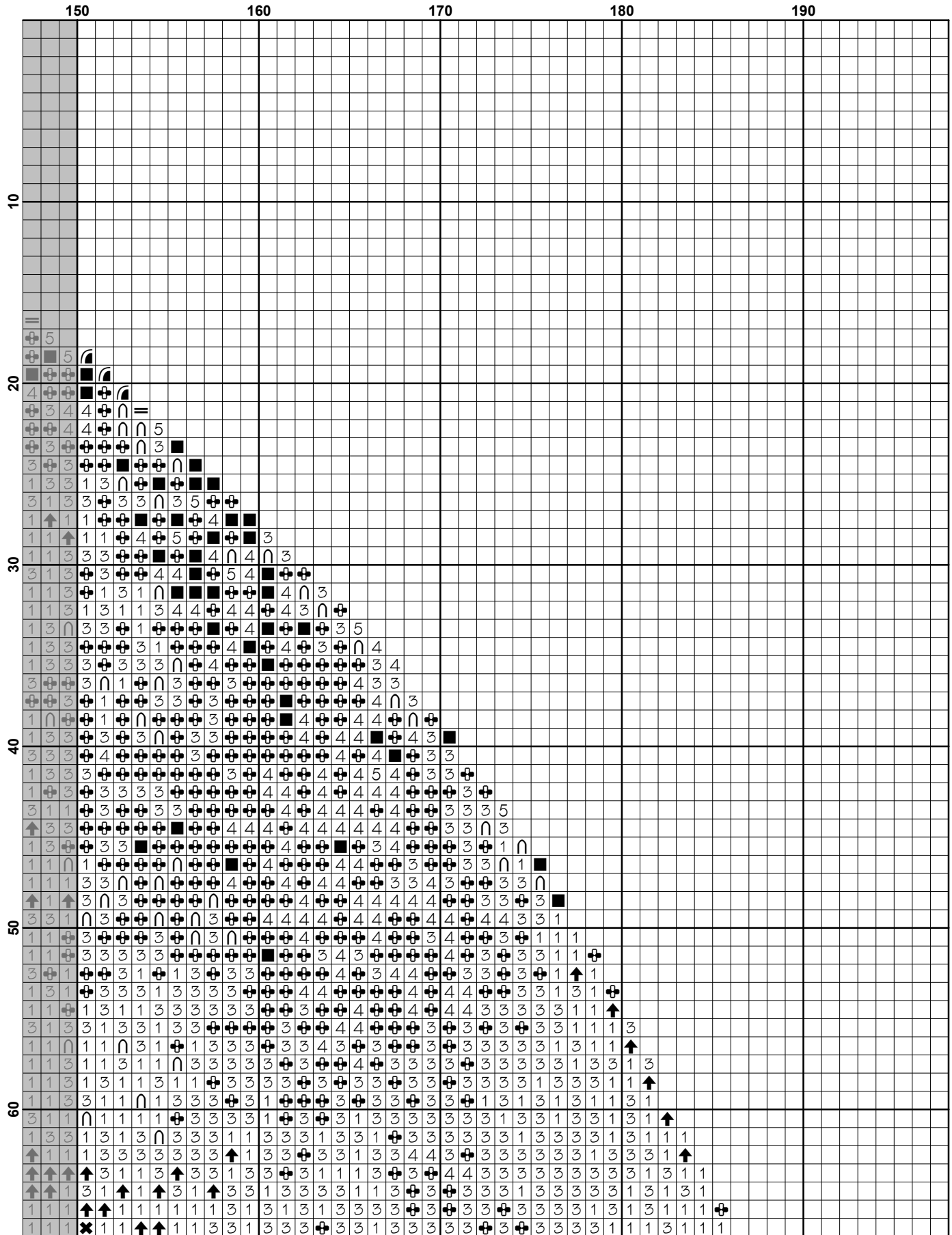
Websites: www.artecy.com and www.artecyshop.com
Email: artecy@artecy.com or stitch@artecyshop.com

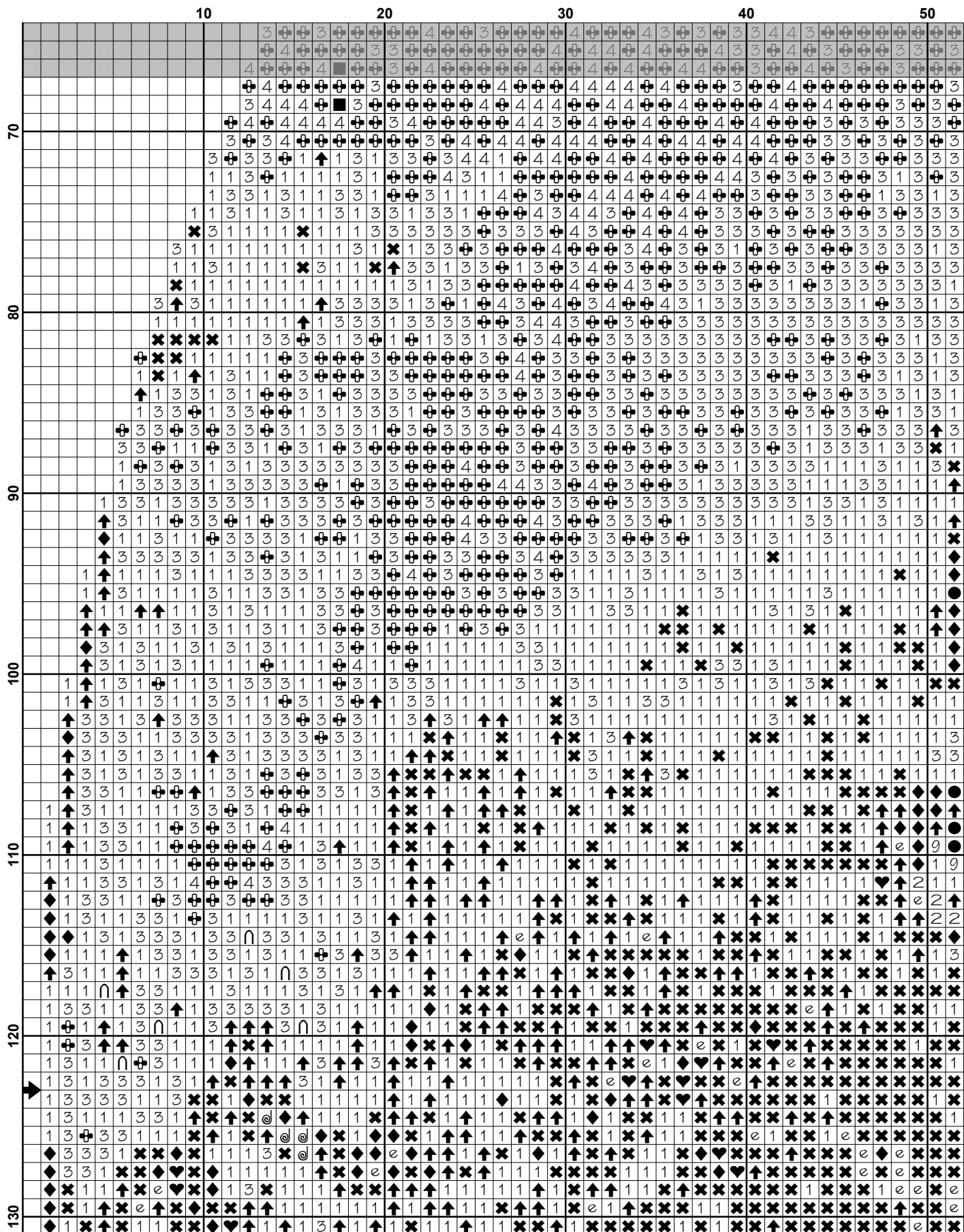
*Patterns are strictly for personal use only. It is against our copyright to make kits for sale from our designs or to sell, copy or redistribute this pattern in any form. You may not upload our patterns to any internet forums or groups or any other website. You may make 1 copy of this pattern for a working copy for your own personal use if needed.





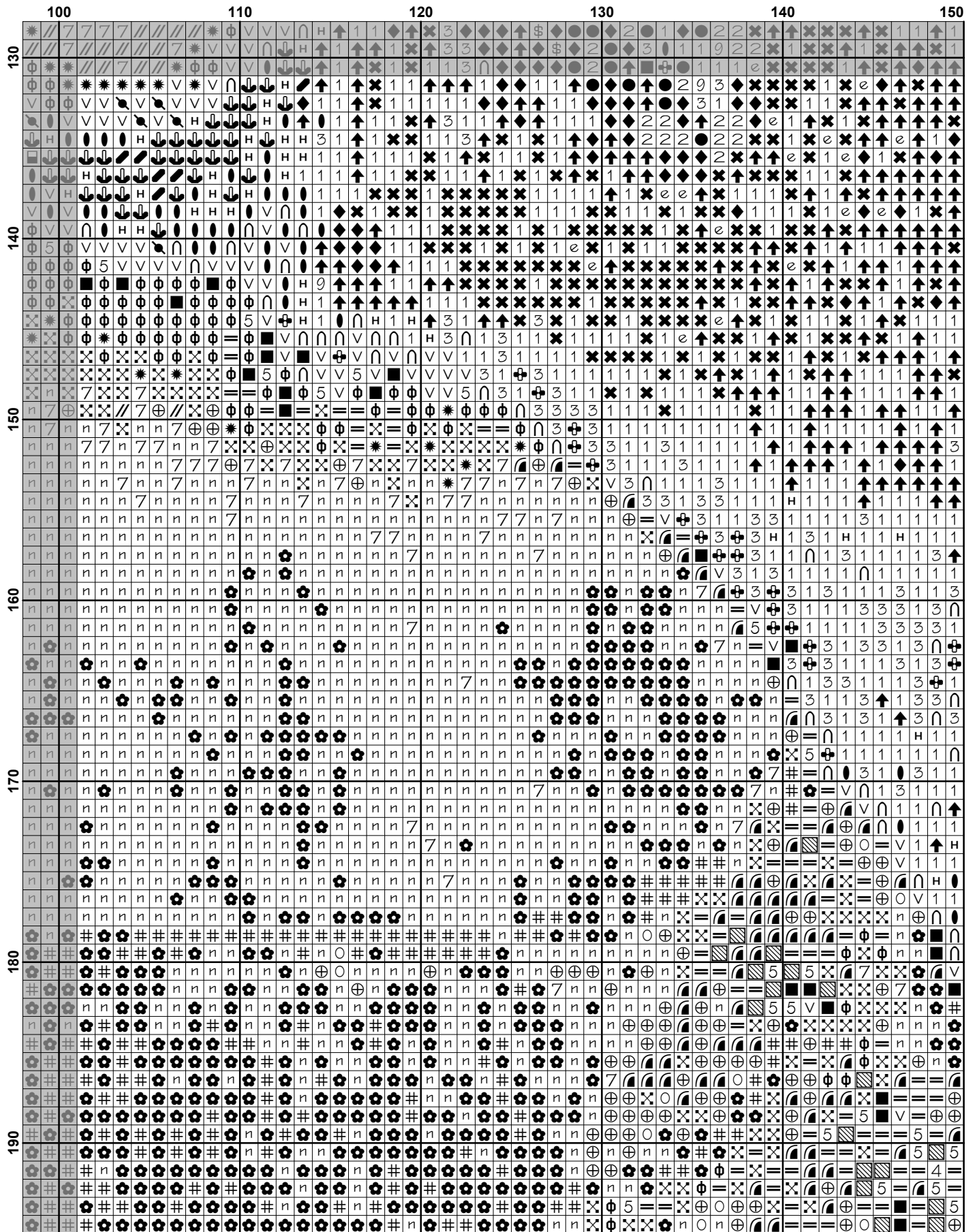


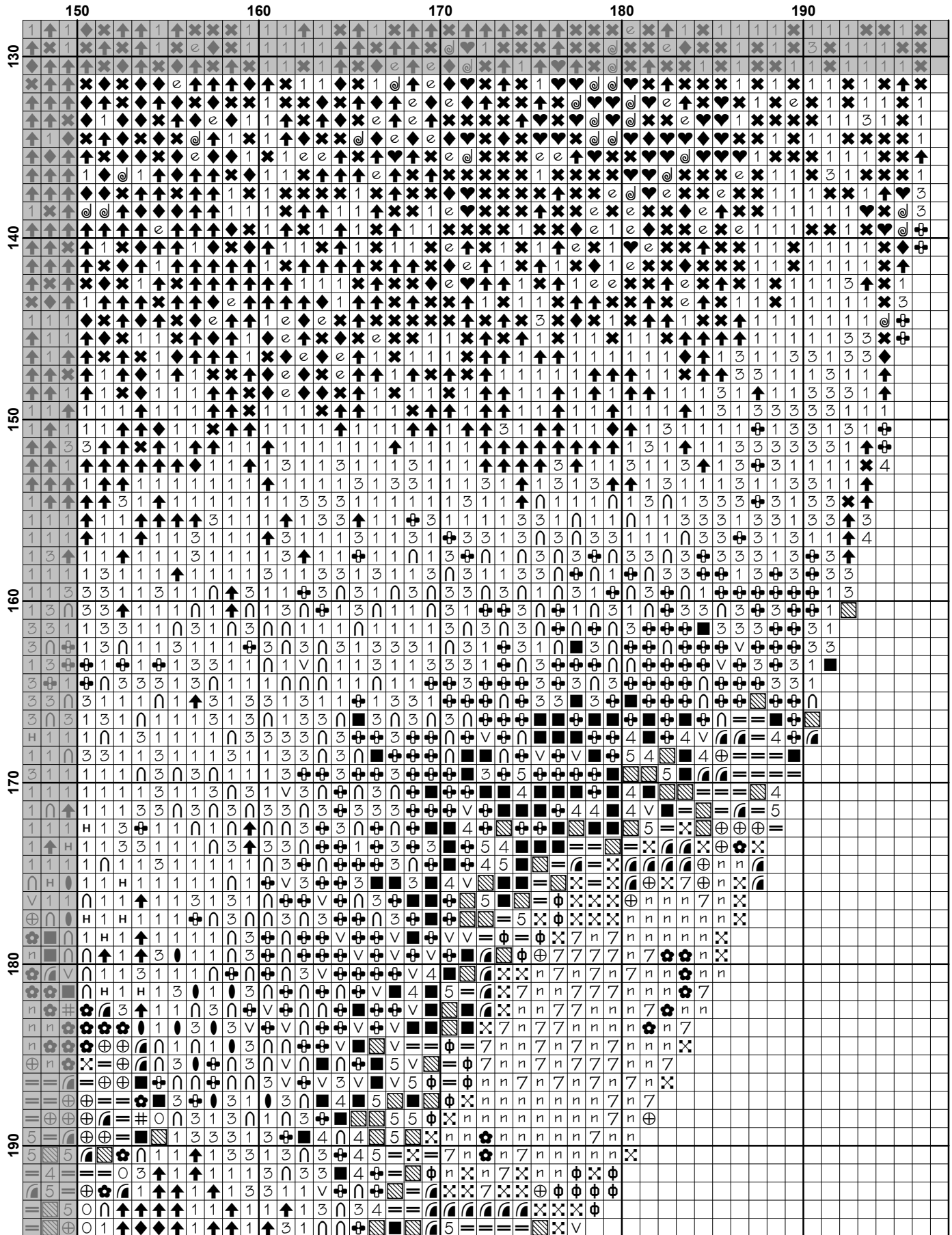


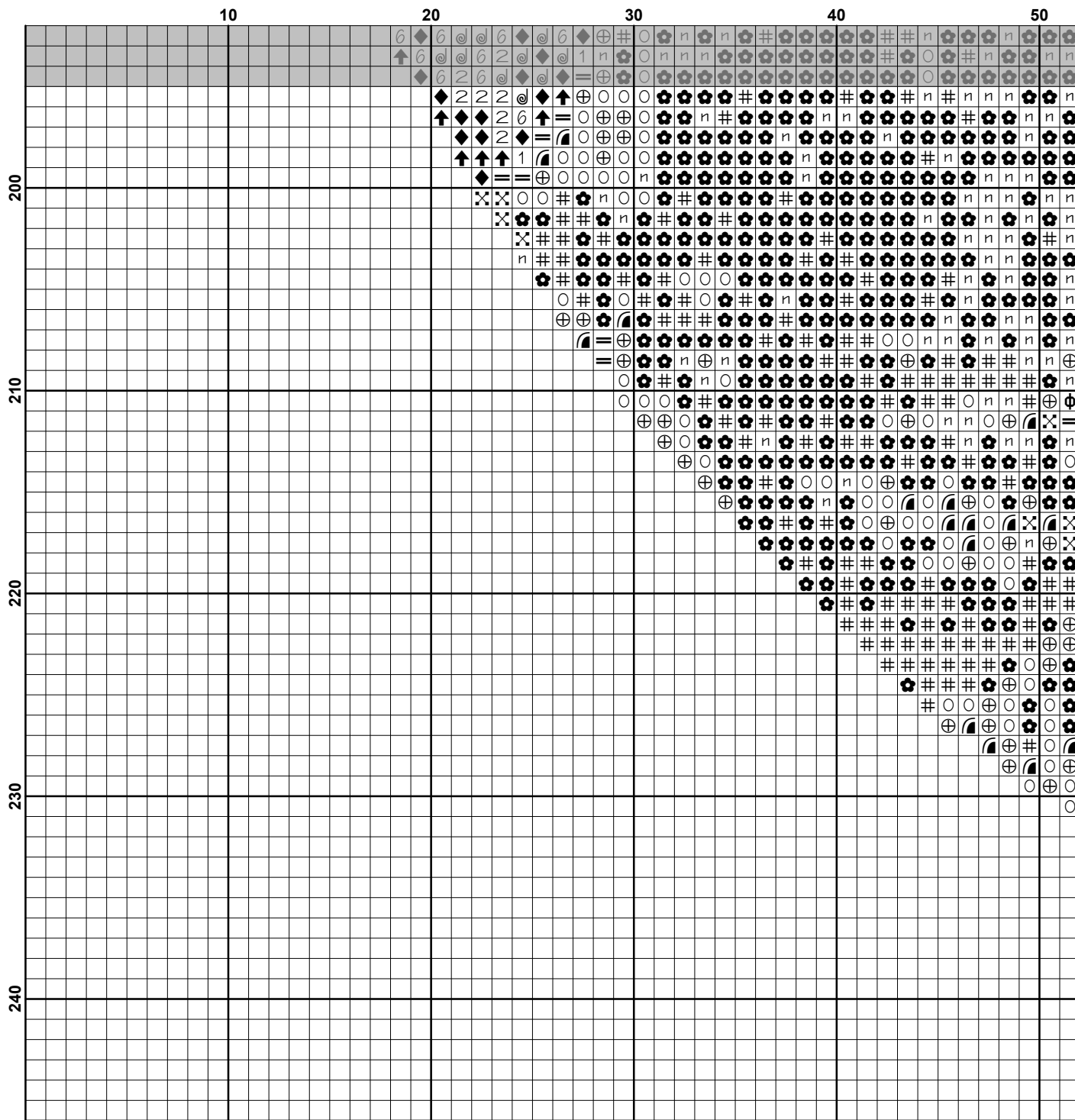


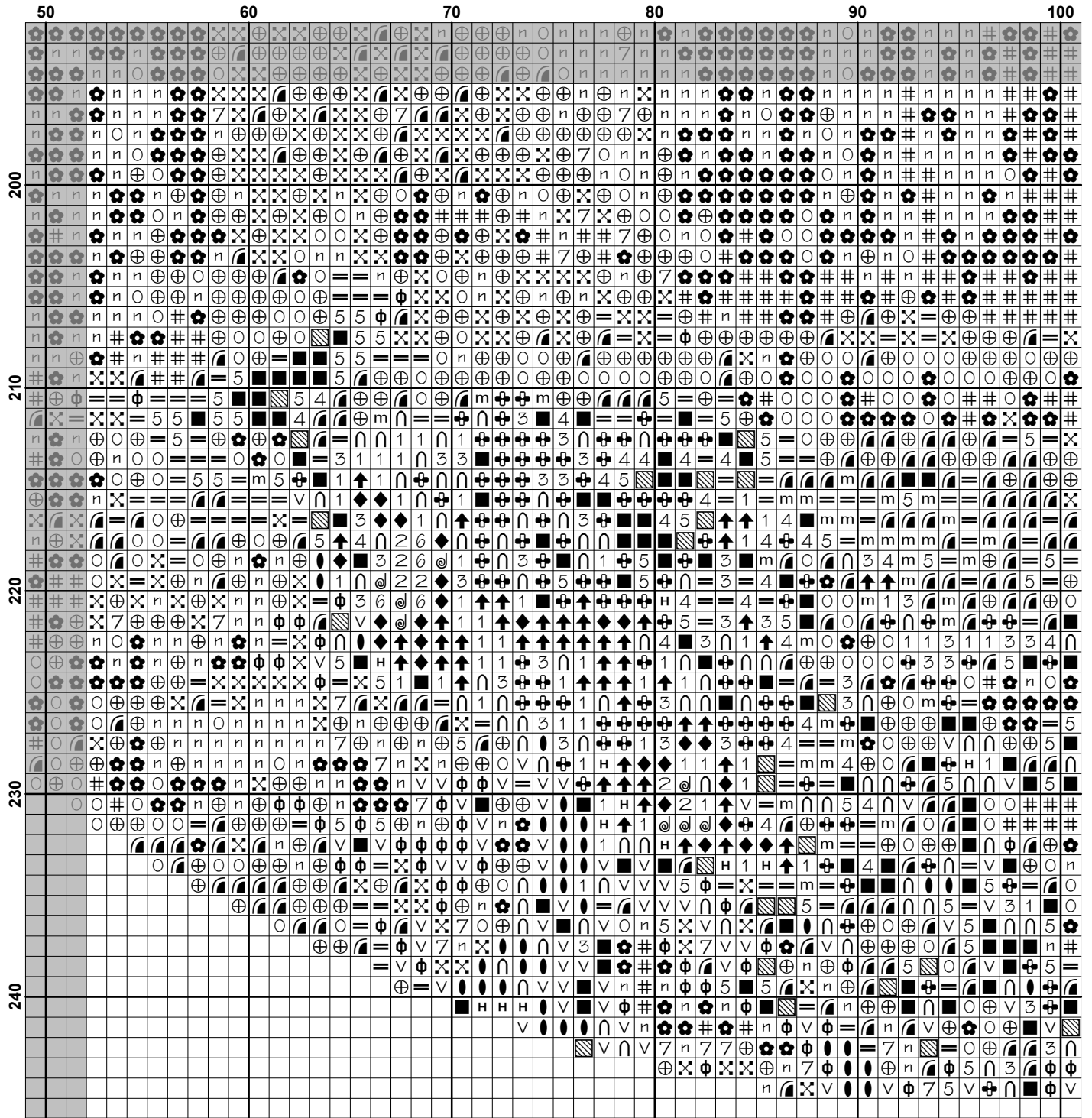
	50	60	70	80	90	100
70	+	+	+	+	+	+
71	3	3	3	3	3	3
72	+	+	3	+	3	+
73	+	3	3	3	3	3
74	3	3	3	3	3	3
75	3	3	3	3	3	3
76	3	3	3	3	3	3
77	3	3	3	3	3	3
78	3	3	3	3	3	3
79	3	3	3	3	3	3
80	3	3	3	3	3	3
81	3	3	3	3	3	3
82	3	3	3	3	3	3
83	3	3	3	3	3	3
84	3	3	3	3	3	3
85	3	3	3	3	3	3
86	3	3	3	3	3	3
87	3	3	3	3	3	3
88	3	3	3	3	3	3
89	3	3	3	3	3	3
90	3	3	3	3	3	3
91	3	3	3	3	3	3
92	3	3	3	3	3	3
93	3	3	3	3	3	3
94	3	3	3	3	3	3
95	3	3	3	3	3	3
96	3	3	3	3	3	3
97	3	3	3	3	3	3
98	3	3	3	3	3	3
99	3	3	3	3	3	3
100	3	3	3	3	3	3
101	3	3	3	3	3	3
102	3	3	3	3	3	3
103	3	3	3	3	3	3
104	3	3	3	3	3	3
105	3	3	3	3	3	3
106	3	3	3	3	3	3
107	3	3	3	3	3	3
108	3	3	3	3	3	3
109	3	3	3	3	3	3
110	3	3	3	3	3	3
111	3	3	3	3	3	3
112	3	3	3	3	3	3
113	3	3	3	3	3	3
114	3	3	3	3	3	3
115	3	3	3	3	3	3
116	3	3	3	3	3	3
117	3	3	3	3	3	3
118	3	3	3	3	3	3
119	3	3	3	3	3	3
120	3	3	3	3	3	3
121	3	3	3	3	3	3
122	3	3	3	3	3	3
123	3	3	3	3	3	3
124	3	3	3	3	3	3
125	3	3	3	3	3	3
126	3	3	3	3	3	3
127	3	3	3	3	3	3
128	3	3	3	3	3	3
129	3	3	3	3	3	3
130	3	3	3	3	3	3
131	3	3	3	3	3	3
132	3	3	3	3	3	3
133	3	3	3	3	3	3
134	3	3	3	3	3	3
135	3	3	3	3	3	3
136	3	3	3	3	3	3
137	3	3	3	3	3	3
138	3	3	3	3	3	3
139	3	3	3	3	3	3
140	3	3	3	3	3	3

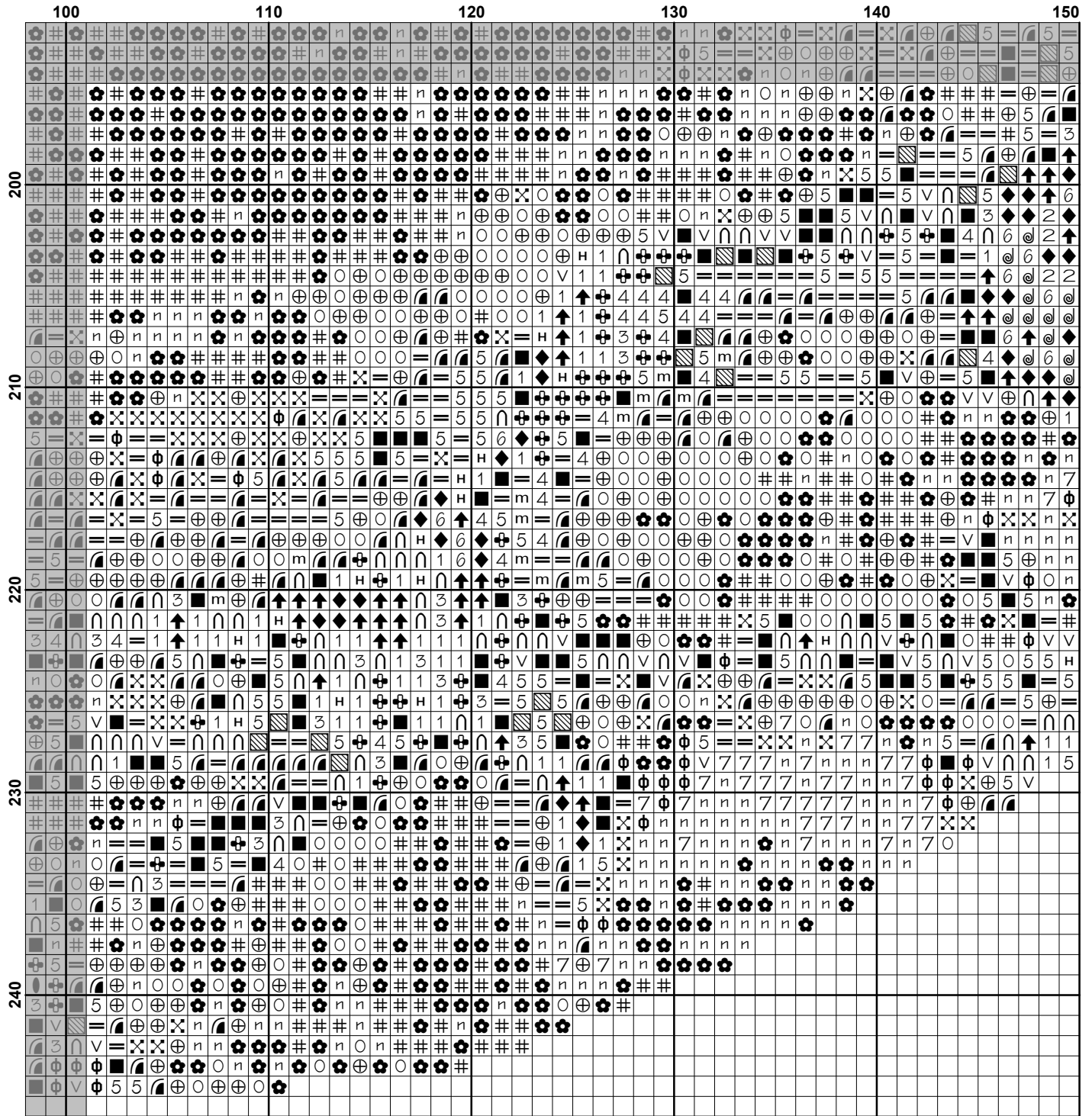
	100	110	120	130	140	150
70	2	2	2	2	2	2
71	2	2	2	2	2	2
72	2	2	2	2	2	2
73	2	2	2	2	2	2
74	2	2	2	2	2	2
75	2	2	2	2	2	2
76	2	2	2	2	2	2
77	2	2	2	2	2	2
78	2	2	2	2	2	2
79	2	2	2	2	2	2
80	2	2	2	2	2	2
81	2	2	2	2	2	2
82	2	2	2	2	2	2
83	2	2	2	2	2	2
84	2	2	2	2	2	2
85	2	2	2	2	2	2
86	2	2	2	2	2	2
87	2	2	2	2	2	2
88	2	2	2	2	2	2
89	2	2	2	2	2	2
90	2	2	2	2	2	2
91	2	2	2	2	2	2
92	2	2	2	2	2	2
93	2	2	2	2	2	2
94	2	2	2	2	2	2
95	2	2	2	2	2	2
96	2	2	2	2	2	2
97	2	2	2	2	2	2
98	2	2	2	2	2	2
99	2	2	2	2	2	2
100	2	2	2	2	2	2
101	2	2	2	2	2	2
102	2	2	2	2	2	2
103	2	2	2	2	2	2
104	2	2	2	2	2	2
105	2	2	2	2	2	2
106	2	2	2	2	2	2
107	2	2	2	2	2	2
108	2	2	2	2	2	2
109	2	2	2	2	2	2
110	2	2	2	2	2	2
111	2	2	2	2	2	2
112	2	2	2	2	2	2
113	2	2	2	2	2	2
114	2	2	2	2	2	2
115	2	2	2	2	2	2
116	2	2	2	2	2	2
117	2	2	2	2	2	2
118	2	2	2	2	2	2
119	2	2	2	2	2	2
120	2	2	2	2	2	2
121	2	2	2	2	2	2
122	2	2	2	2	2	2
123	2	2	2	2	2	2
124	2	2	2	2	2	2
125	2	2	2	2	2	2
126	2	2	2	2	2	2
127	2	2	2	2	2	2
128	2	2	2	2	2	2
129	2	2	2	2	2	2
130	2	2	2	2	2	2

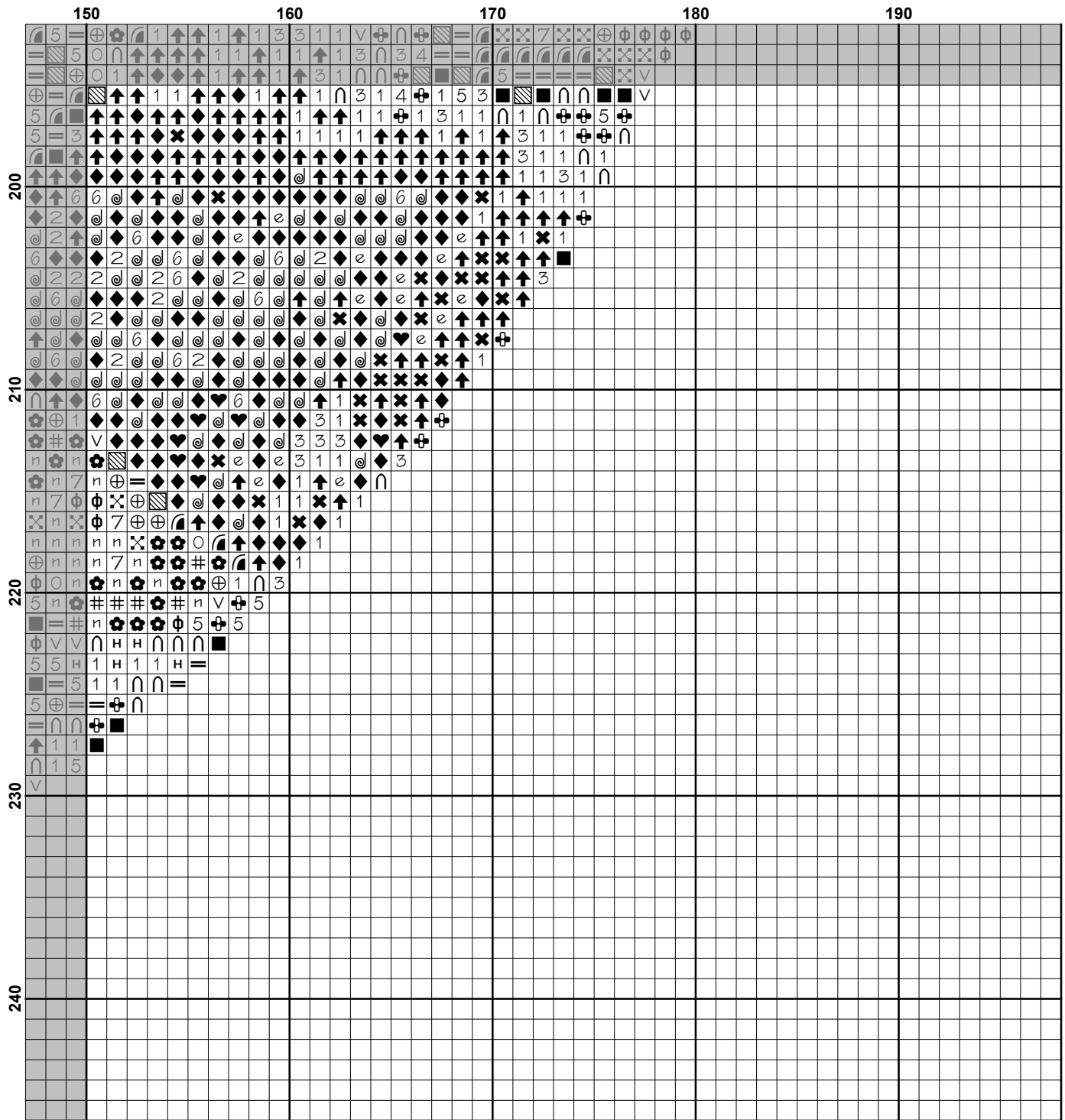












Pattern Name: Sophie Nariskina
Designed By: Artwork by Moritz Michael Daffinger
Company: Artecy Cross Stitch
Copyright: Copyright Artecy Cross Stitch. All rights Reserved.
Fabric: Aida 14, White
 196w X 244h Stitches
Size(s): 14 Count, 14w X 17-3/8h in
 16 Count, 12-1/4w X 15-1/4h in
 18 Count, 10-7/8w X 13-1/2h in

Floss Used for Full Stitches:

Symbol	Strands	Type	Number	Color
	2	DMC	168	Pewter-VY LT
	2	DMC	169	Pewter-LT
	2	DMC	224	Shell Pink-VY LT
	2	DMC	310	Black
	2	DMC	317	Pewter Gray
	2	DMC	318	Steel Gray-LT
	2	DMC	336	Navy Blue
	2	DMC	413	Pewter Gray-DK
	2	DMC	414	Steel Gray-DK
	2	DMC	453	Shell Gray-LT
	2	DMC	524	Fern Green-VY LT
	2	DMC	535	Ash Gray-VY LT
	2	DMC	646	Beaver Gray-DK
	2	DMC	647	Beaver Gray-MD
	2	DMC	648	Beaver Gray-LT
	2	DMC	754	Peach-LT
	2	DMC	779	Cocoa-DK
	2	DMC	822	Beige Gray-LT
	2	DMC	823	Navy Blue-DK
	2	DMC	838	Beige Brown-VY DK
	2	DMC	842	Beige Brown-VY LT
	2	DMC	930	Antique Blue-DK
	2	DMC	934	Black Avocado Green
	2	DMC	951	Tawny-LT
	2	DMC	3031	Mocha Brown-VY DK
	2	DMC	3033	Mocha Brown-VY LT
	2	DMC	3042	Antique Violet-LT
	2	DMC	3371	Black Brown
	2	DMC	3750	Antique Blue-VY DK
	2	DMC	3770	Tawny-VY LT
	2	DMC	3772	Desert Sand-VY DK
	2	DMC	3779	Terra Cotta-UL VY LT
	2	DMC	3787	Brown Gray-DK
	2	DMC	3799	Pewter Gray-VY DK
	2	DMC	3858	Rosewood-MD
	2	DMC	3860	Cocoa
	2	DMC	3861	Cocoa-LT
	2	DMC	3864	Mocha Beige-LT
	2	DMC	3865	Winter White

Notes:

The middle of this pattern can be found on page 6 and is 99 stitches across and 123 stitches down. Pattern layout using page numbers in top left.

1 2 3 4
 5 6 7 8
 9 10 11 12
 13 14 15 16

Usage Summary

Strands Per Skein: 6

Skein Length: 313.0 in

Type	Number	Full	Half	Quarter	Petite	Back(in)	Str(in)	Spec(in)	French	Bead	Skein Est.
DMC	168	179	0	0	0	0.0	0.0	0.0	0	0	1.000
DMC	169	2675	0	0	0	0.0	0.0	0.0	0	0	2.000
DMC	224	388	0	0	0	0.0	0.0	0.0	0	0	1.000
DMC	310	2347	0	0	0	0.0	0.0	0.0	0	0	1.000
DMC	317	5078	0	0	0	0.0	0.0	0.0	0	0	3.000
DMC	318	1350	0	0	0	0.0	0.0	0.0	0	0	1.000
DMC	336	393	0	0	0	0.0	0.0	0.0	0	0	1.000
DMC	413	1919	0	0	0	0.0	0.0	0.0	0	0	1.000
DMC	414	3152	0	0	0	0.0	0.0	0.0	0	0	2.000
DMC	453	627	0	0	0	0.0	0.0	0.0	0	0	1.000
DMC	524	461	0	0	0	0.0	0.0	0.0	0	0	1.000
DMC	535	98	0	0	0	0.0	0.0	0.0	0	0	1.000
DMC	646	568	0	0	0	0.0	0.0	0.0	0	0	1.000
DMC	647	748	0	0	0	0.0	0.0	0.0	0	0	1.000
DMC	648	1185	0	0	0	0.0	0.0	0.0	0	0	1.000
DMC	754	569	0	0	0	0.0	0.0	0.0	0	0	1.000
DMC	779	169	0	0	0	0.0	0.0	0.0	0	0	1.000
DMC	822	464	0	0	0	0.0	0.0	0.0	0	0	1.000
DMC	823	451	0	0	0	0.0	0.0	0.0	0	0	1.000
DMC	838	31	0	0	0	0.0	0.0	0.0	0	0	1.000
DMC	842	536	0	0	0	0.0	0.0	0.0	0	0	1.000
DMC	930	2804	0	0	0	0.0	0.0	0.0	0	0	2.000
DMC	934	91	0	0	0	0.0	0.0	0.0	0	0	1.000
DMC	951	2493	0	0	0	0.0	0.0	0.0	0	0	2.000
DMC	3031	35	0	0	0	0.0	0.0	0.0	0	0	1.000
DMC	3033	745	0	0	0	0.0	0.0	0.0	0	0	1.000
DMC	3042	356	0	0	0	0.0	0.0	0.0	0	0	1.000
DMC	3371	563	0	0	0	0.0	0.0	0.0	0	0	1.000
DMC	3750	271	0	0	0	0.0	0.0	0.0	0	0	1.000
DMC	3770	3053	0	0	0	0.0	0.0	0.0	0	0	2.000
DMC	3772	63	0	0	0	0.0	0.0	0.0	0	0	1.000
DMC	3779	251	0	0	0	0.0	0.0	0.0	0	0	1.000
DMC	3787	147	0	0	0	0.0	0.0	0.0	0	0	1.000
DMC	3799	1309	0	0	0	0.0	0.0	0.0	0	0	1.000
DMC	3858	25	0	0	0	0.0	0.0	0.0	0	0	1.000
DMC	3860	314	0	0	0	0.0	0.0	0.0	0	0	1.000
DMC	3861	542	0	0	0	0.0	0.0	0.0	0	0	1.000
DMC	3864	513	0	0	0	0.0	0.0	0.0	0	0	1.000
DMC	3865	896	0	0	0	0.0	0.0	0.0	0	0	1.000