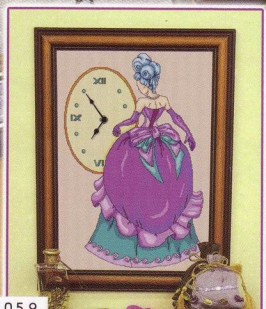
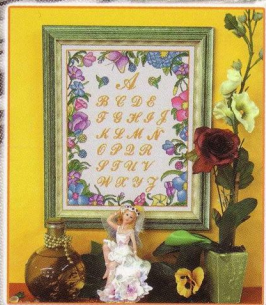
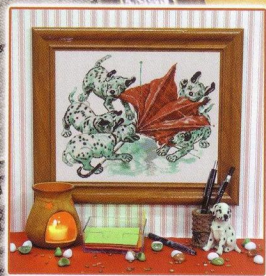


Ambientes en  
**Punto  
de  
Cruz**

Publicación mensual - Nº 59 - 3,90 €  
Portugal 3,90 €

**ESPECIAL**  
Julio/Agosto

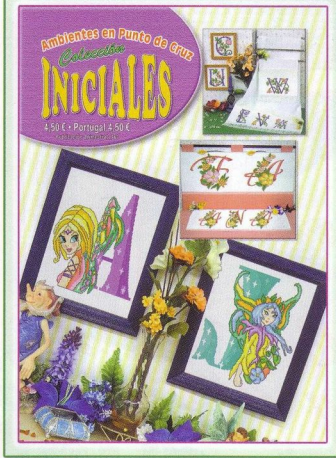
**I  
N  
I  
C  
I  
A  
L  
E  
S  
Y  
M  
Á  
S**



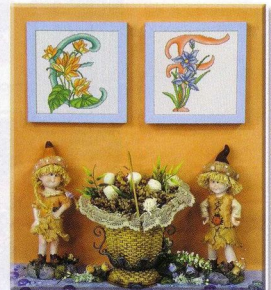
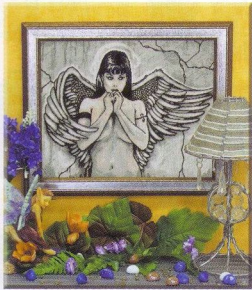
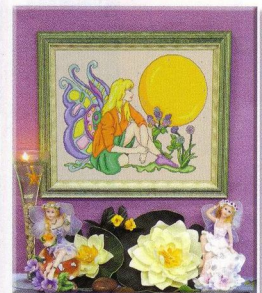
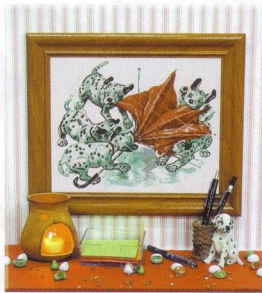
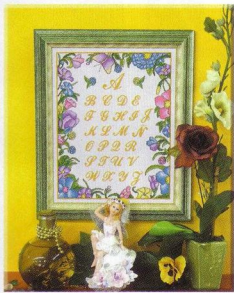
# Ya en tu kiosco

# Ambientes en Punto de Cruz nº 59

# Sumario



Abecedario vegetal de verano .....	4
Traviesos dálmatas haciendo diabluras .....	6
El Abecedario de los Pequemón .....	12
Un momento mágico en la floresta .....	18
Fantástico mundo de ilusiones .....	20
Inocencia colonial entre letras .....	22
La dama de la corte llega tarde .....	28
Mucho más que unas iniciales .....	30



**Editado por:**  
EDICIONES  
FUENTE DE LA SALUD, S.L.

**Director:**  
A. Fernández

**Coordinación y Diseño:**  
Juan Manuel Lisedas

**Redacción:**  
Marian Márquez y Raquel Simón

**Diseño, ilustraciones,  
esquemas y estilismo:**  
Beatriz Rodríguez, Marta Soto  
y Concepción Martín

**Redacción y Administración:**  
Telf.: 647 856 327  
Apartado de correos nº 53  
28600 NAVALCARNERO (Madrid)  
fuentesalud@telefonica.net

**Distribución España:**  
DISPAÑA  
General Perón, 27 - 7ª  
Telf.: 91 417 95 30 • MADRID

**Distribución Portugal:**  
JOHNSONS INT. NEWS

**Depósito legal:** M-15832-2001  
IMPRESO EN ESPAÑA  
PRINTED IN SPAIN  
30/09/06

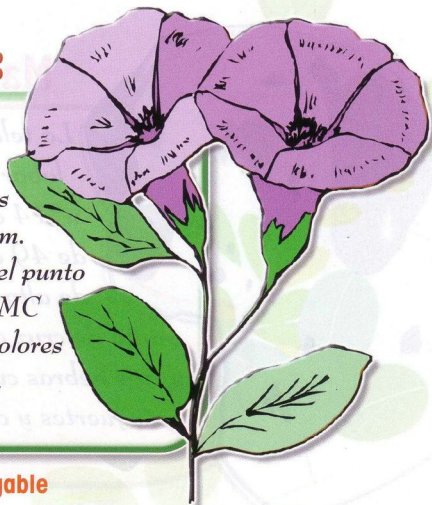
Todos los modelos, labores,  
fotografías, dibujos y textos son  
propiedad de Ediciones Fuente de  
la Salud, S.L. y queda prohibida  
su reproducción total o parcial por  
cualquier procedimiento mecánico,  
informático u otro similar,  
requiriendo para ello la autorización  
expresa de la editorial



# Abececionario vegetal de verano

## Materiales:

La tela elegida para esta labor ha sido Aida blanca nº 14 con unas dimensiones de 38 cm. de ancho x 50 cm. de alto aprox. Borda todo el punto de cruz con hilo mouliné DMC en tres hebras cuando los colores sean más fuertes y con dos, cuando sean más claros.



Esquema en el desplegable

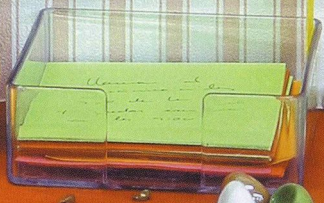
# Traviesos dálmatas haciendo diabluras



## **Materiales:**

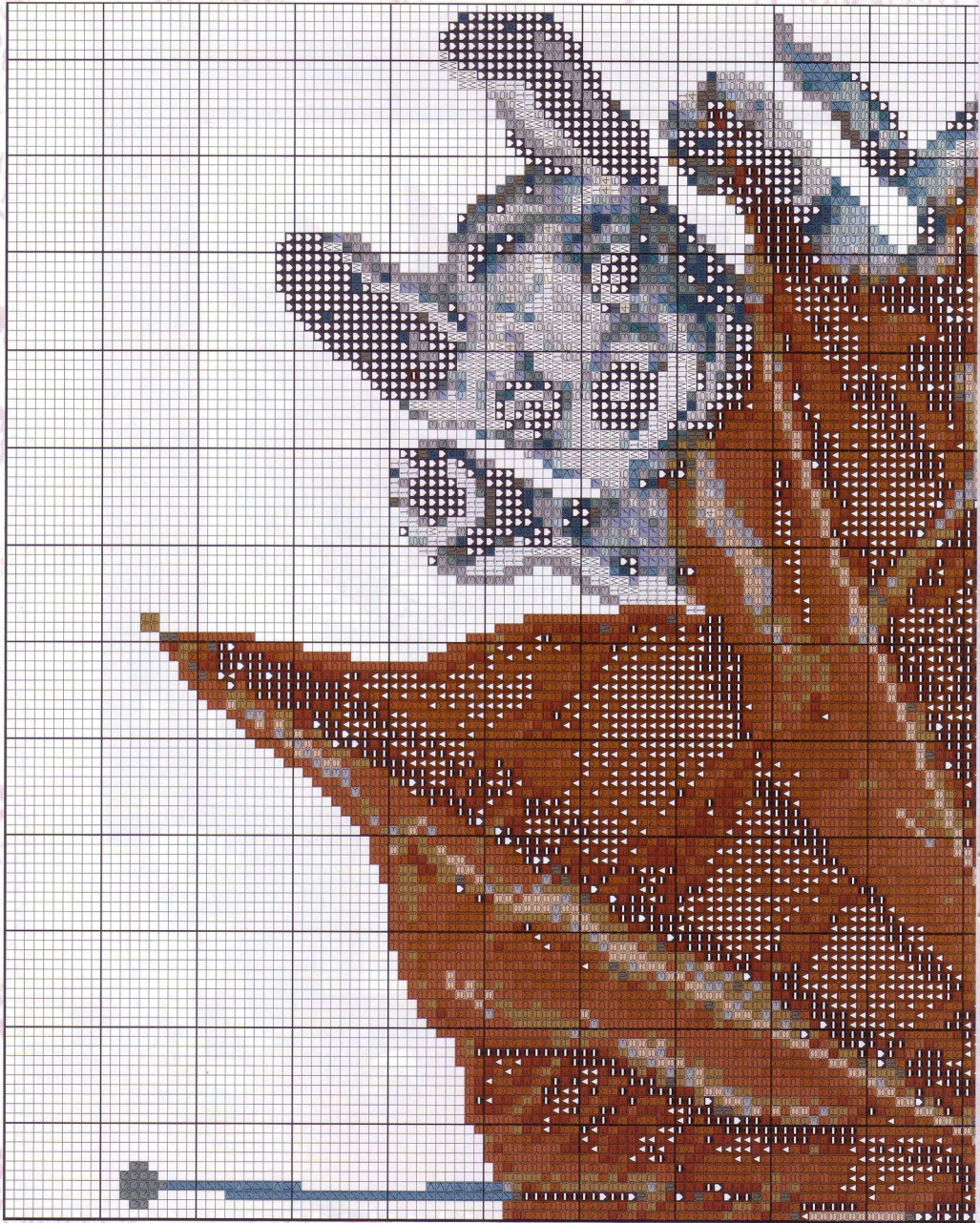
*La tela elegida para esta labor ha sido Aida blanca nº14 con unas dimensiones de 49 cm. de ancho x 39 cm. de alto aprox. Borda todo el punto de cruz con hilo mouliné DMC en tres hebras cuando los colores sean más fuertes y con dos, cuando sean más claros.*





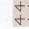

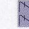

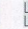






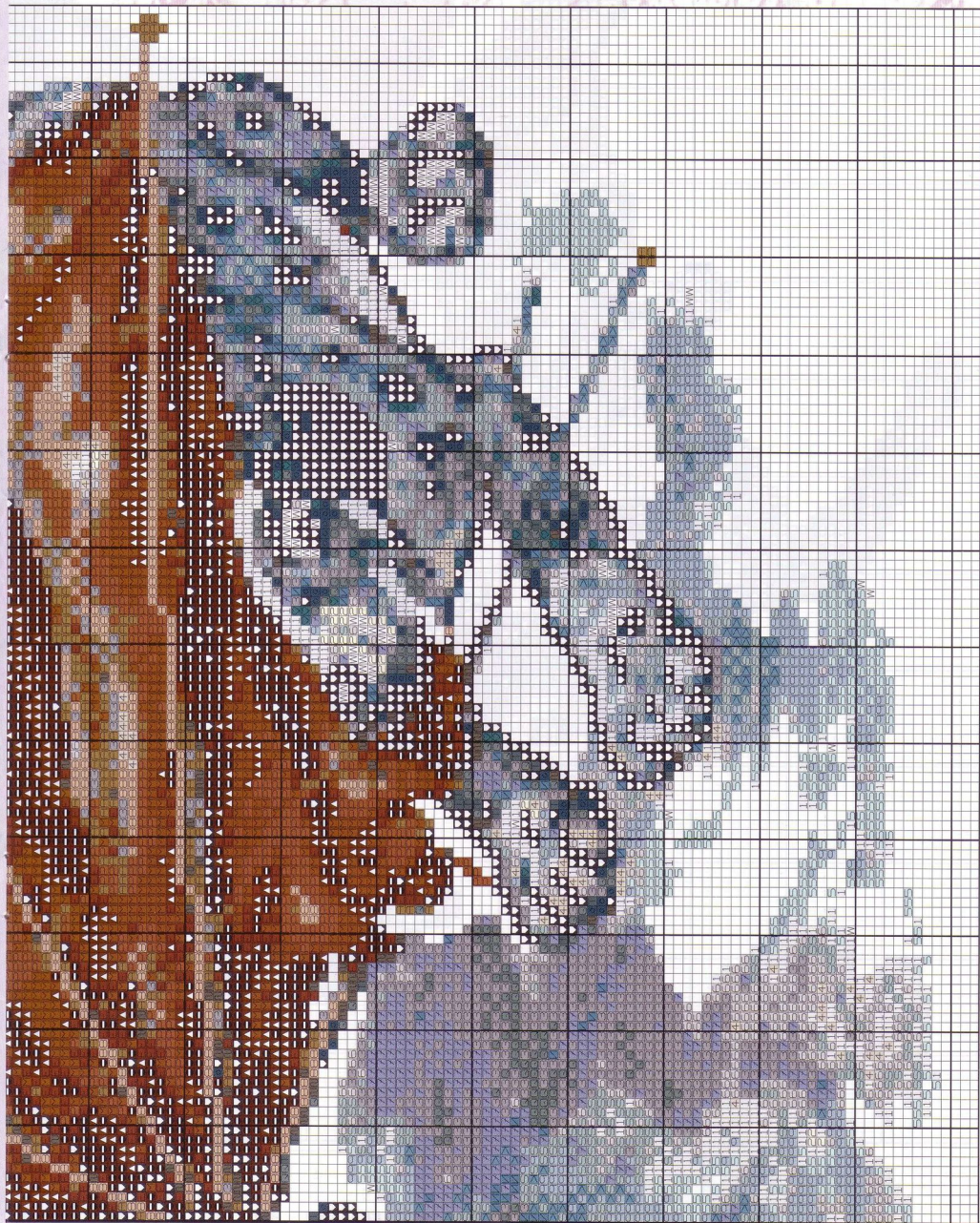


Colores  
DMC:

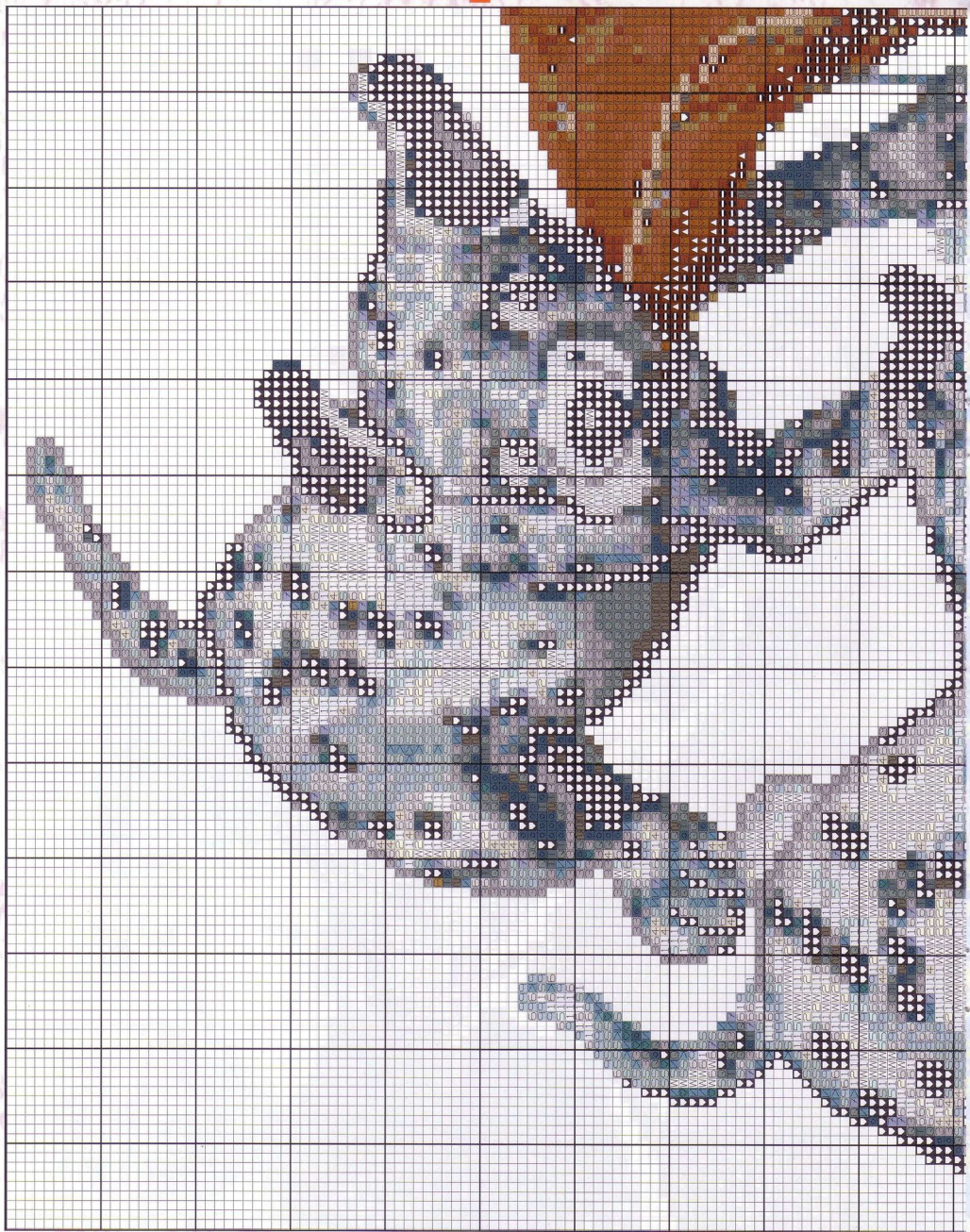
- |  |       |  |       |  |       |  |       |  |       |  |        |  |        |  |       |  |       |  |       |  |       |
|--|-------|--|-------|--|-------|--|-------|--|-------|--|--------|--|--------|--|-------|--|-------|--|-------|--|-------|
|  | 169 D |  | 844 D |  | 902 D |  | 598 D |  | 632 D |  | 3766 D |  | 3768 D |  | 224 D |  | 315 D |  | 926 D |  | 928 D |
|--|-------|--|-------|--|-------|--|-------|--|-------|--|--------|--|--------|--|-------|--|-------|--|-------|--|-------|



- 646 D  

- 712 D  

- 3808 D  

- 3848 D  

- 543 D  

- 597 D  

- 932 D  

- 3726 D  

- 747 D  

- 762 D  

- 3849 D  

- 3888 D  

- 3861 D  








**Colores  
DMC:**

Blanco D

169 D

844 D

902 D

598 D

632 D

3766 D

3768 D

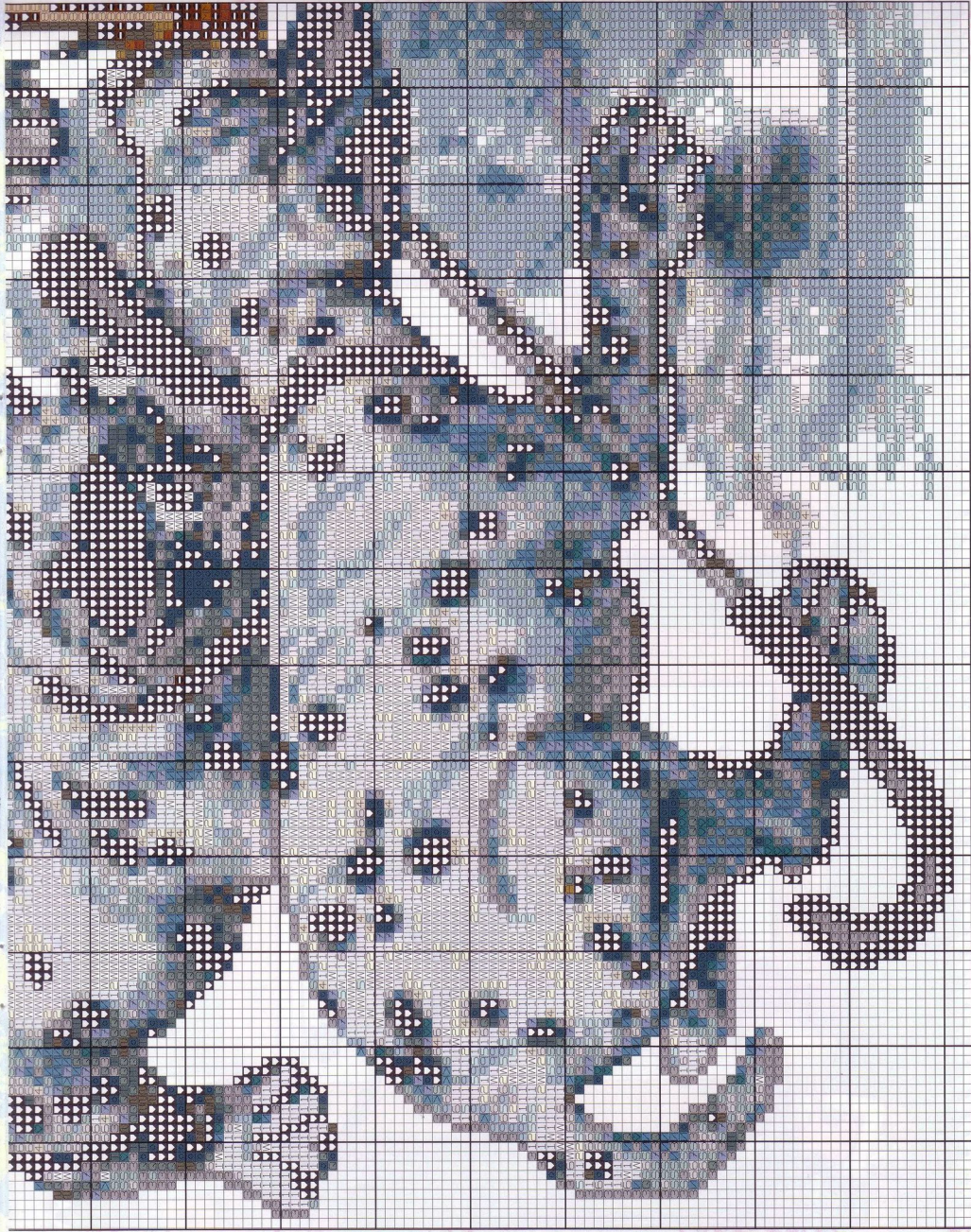
224 D

315 D

926 D

928 D





666 D  


712 D  


3808 D  


3846 D  


444 D  


397 D  


932 D  


3726 D  


747 D  


762 D  


3849 D  


3858 D  


3861 D  




# El Abecedario de los Pequeñón

## Materiales:

*Realiza estos cuadros tan originales a partir de 32 cm. de ancho x 28 cm. de alto de tela Aida nº 14 blanca. Borda todo el punto de cruz con hilo mouliné DMC en tres hebras cuando los colores sean más fuertes y con dos, cuando sean más claros.*



**Colores  
DMC y  
Madeira:**

4 4 Blanco D  
4 4 2401 M

3 10 D  
2 400 M

9 06 D  
1 412 M

9 07 D  
1 410 M

7 28 D  
2 509 M

7 41 D  
2 01 M

3 608 D  
3 709 M

3 609 D  
3 710 M

7 97 D  
3 912 M

7 98 D  
3 911 M

4 44 D  
1 04 M

4 45 D  
1 03 M

9 57 D  
4 14 M

3 607 D  
3 708 M

7 82 D  
2 213 M

7 83 D  
2 212 M

3 845 D  
1 106 M

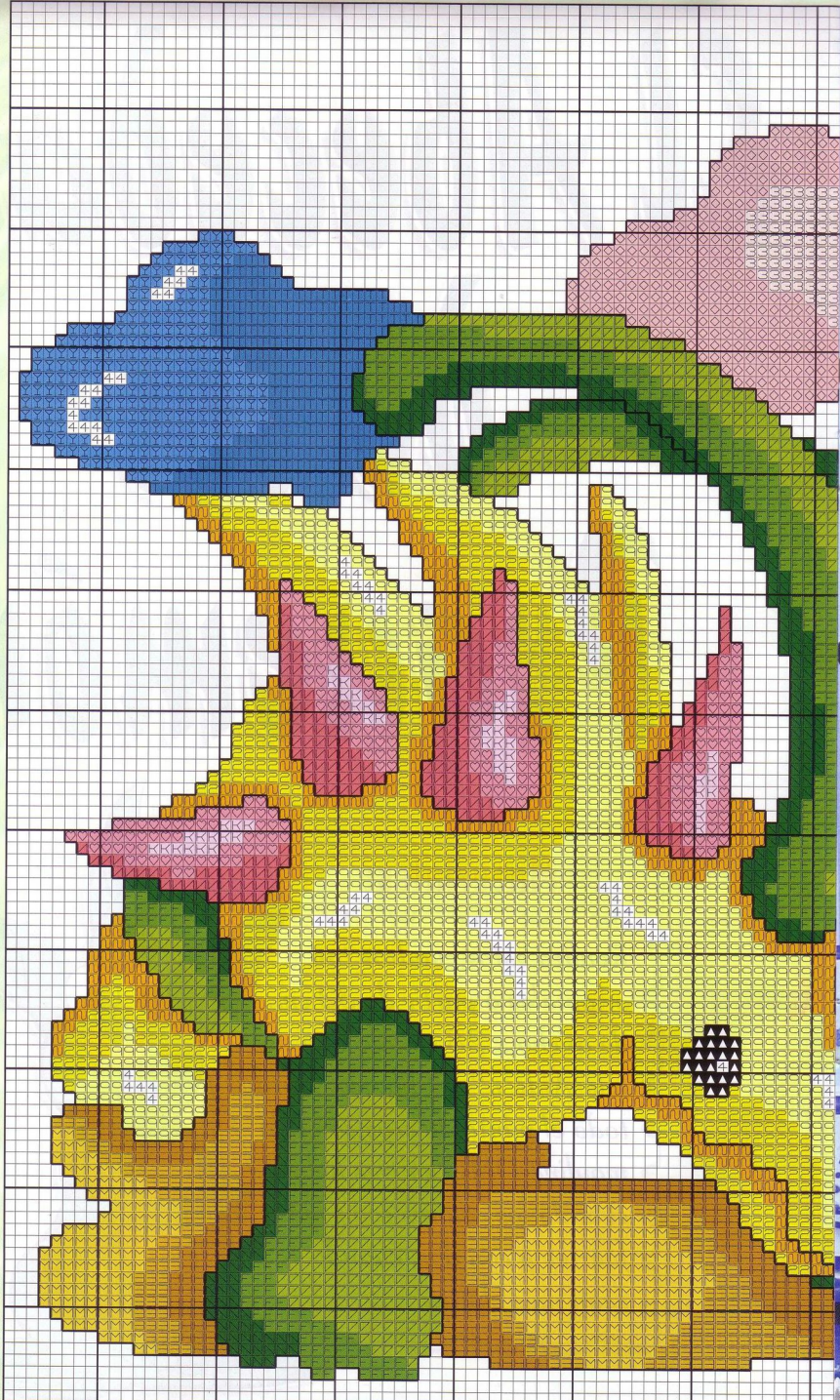
3 846 D  
1 105 M

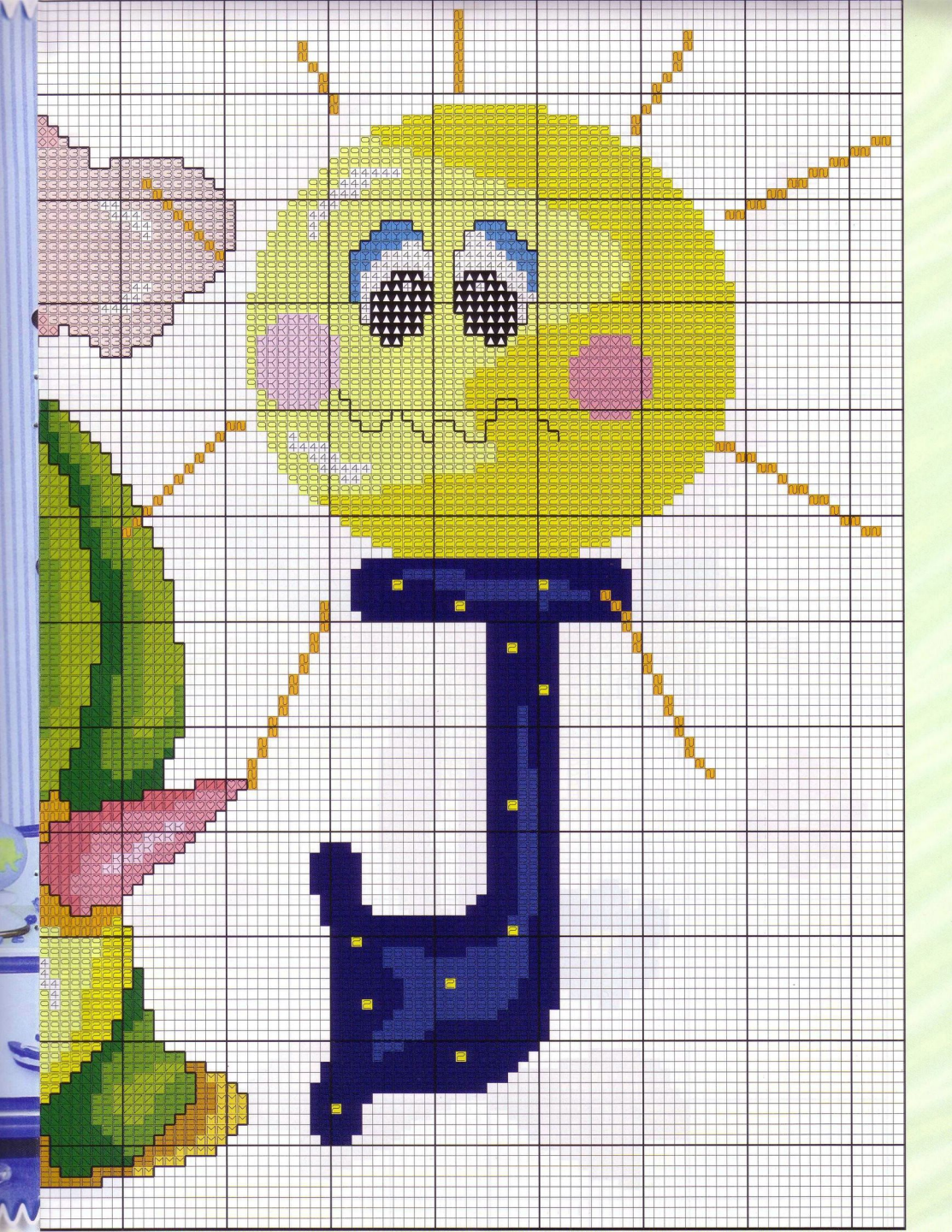
8 18 D  
8 14 M

9 05 D  
1 413 M

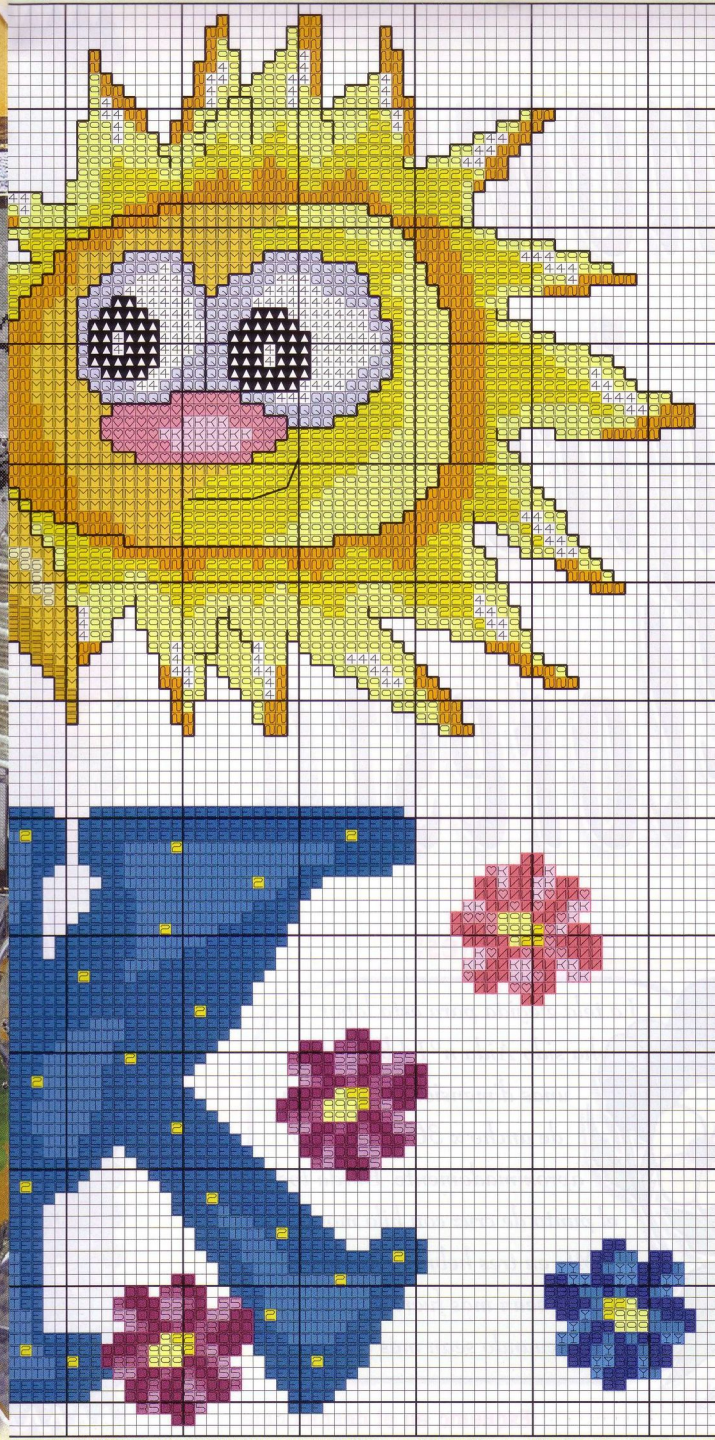
**Pespunte:**

3 10 D  
2 400 M









## Colores DMC y Madeira:

4.4. Blanco D 444 D  
2401 M 22 104 M

310 D 99 445 D  
2400 M 99 103 M

800 D 906 D  
908 M 908 M

809 D 907 D  
909 M 1410 M

552 D 554 D  
712 M 710 M

553 D 728 D  
711 M 2509 M

917 D 3608 D  
704 M 709 M

741 D 780 D  
201 M 2214 M

745 D 782 D  
111 M 2213 M

3844 D 3846 D  
1107 M 1105 M

783 D 798 D  
2212 M 911 M

797 D 799 D  
912 M 910 M

886 D 3845 D  
2101 M 1106 M

3609 D 3607 D  
710 M 708 M

### Pespunte:

310 D 552 D  
2400 M 712 M

798 D 3607 D  
911 M 708 M



# Un momento mágico en la floresta



## **Materiales:**

La tela elegida para esta labor ha sido Aida n° 14 beige con unas dimensiones de 45 cm. de ancho x 36 cm. de alto aproximadamente. Borda todo el punto de cruz con hilo mouliné DMC en tres hebras cuando los colores sean más fuertes y con dos, cuando sean más claros.

Esquema en el desplegable



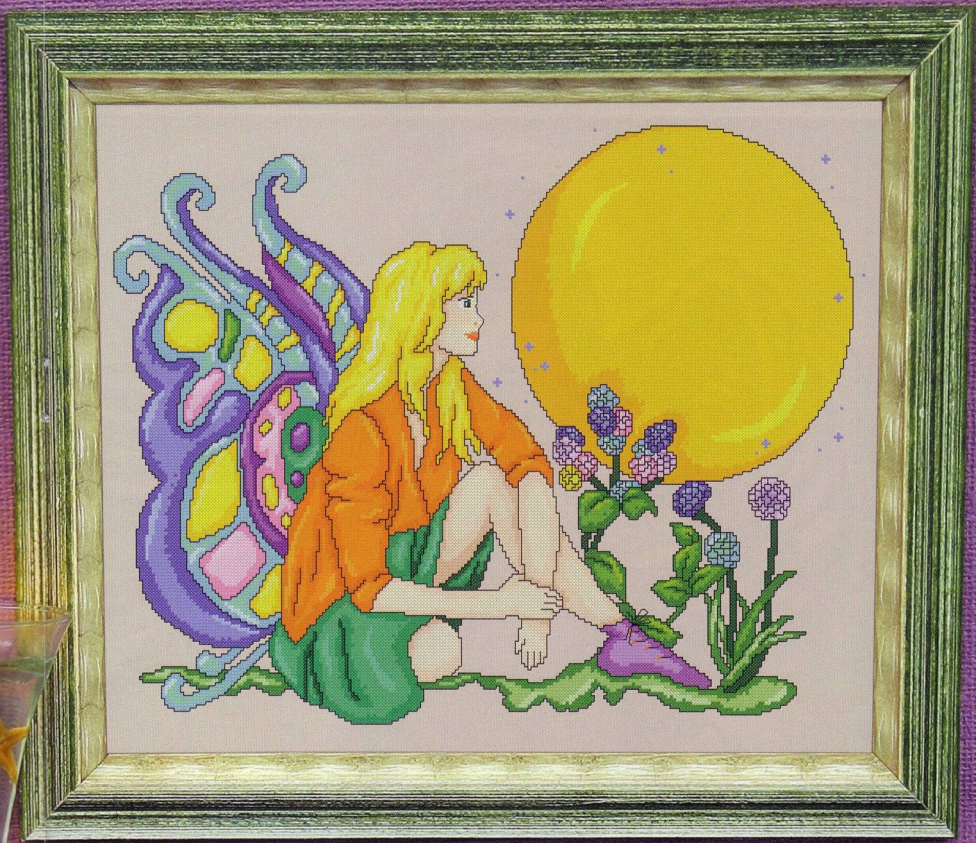




Ilustración cedida  
por **CARL GOOKINS**  
[www.carlgookins.com](http://www.carlgookins.com)

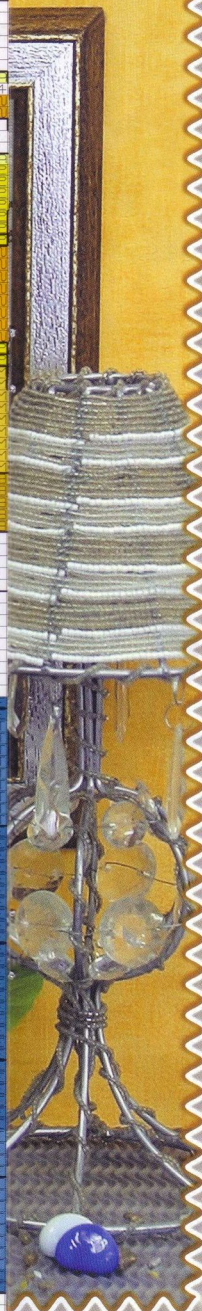
# Fantástico mundo de ilusiones

## **Materiales:**

*Para esta labor se ha empleado 52 cm. de ancho x 40 cm. de largo aprox. de tela Aida ecológica. Borda los colores oscuros con tres hebras y los más claros con dos, siguiendo el gráfico.*



**Esquema en el desplegable**



# Inocencia colonial entre letras



## **Materiales:**

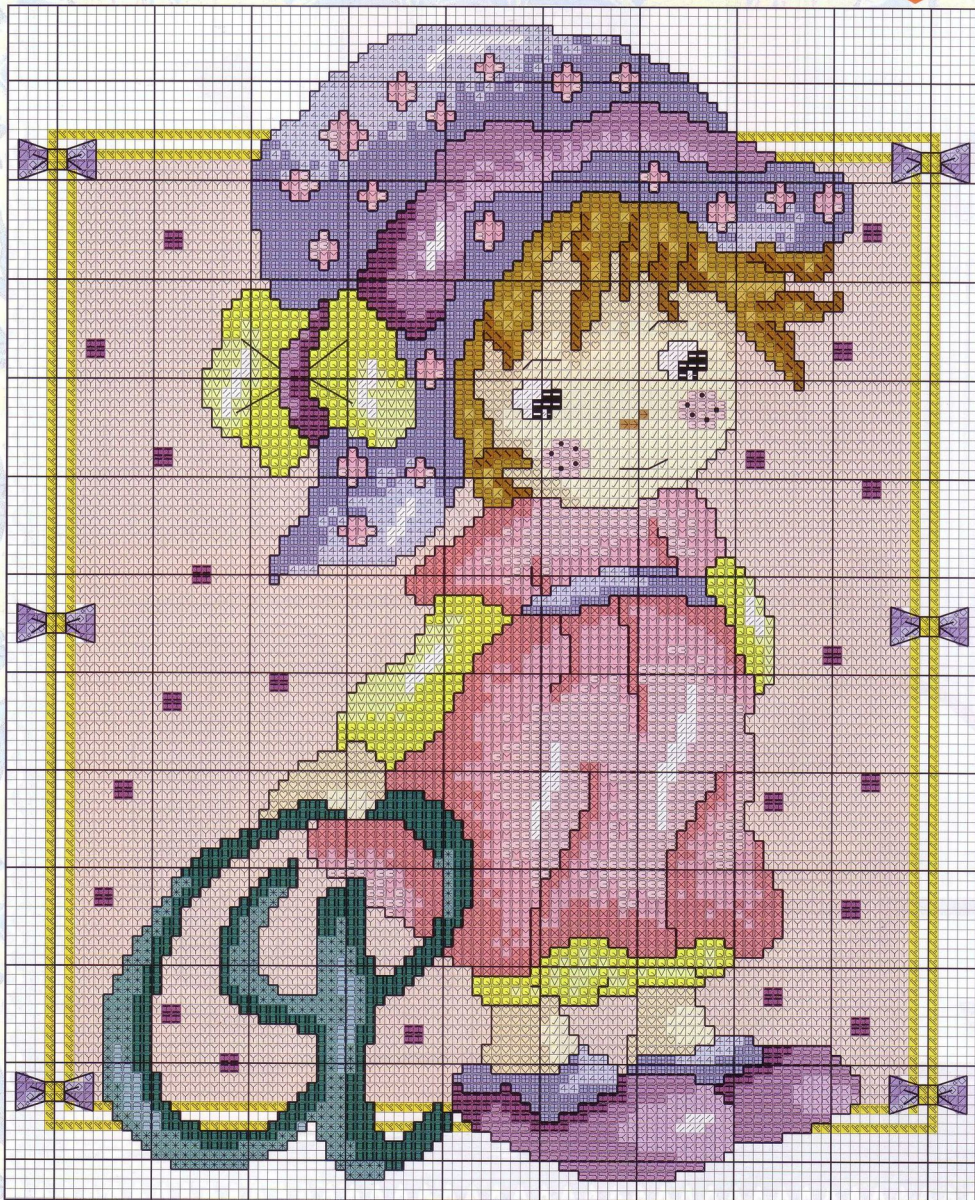
Realiza estos cuadros de iniciales a partir de 19 cm. de ancho x 27 cm. de alto de tela Aida n°14 blanca. Utiliza tres hebras para el punto de cruz cuando vaya bordado en colores oscuros y dos cuando sean claros.

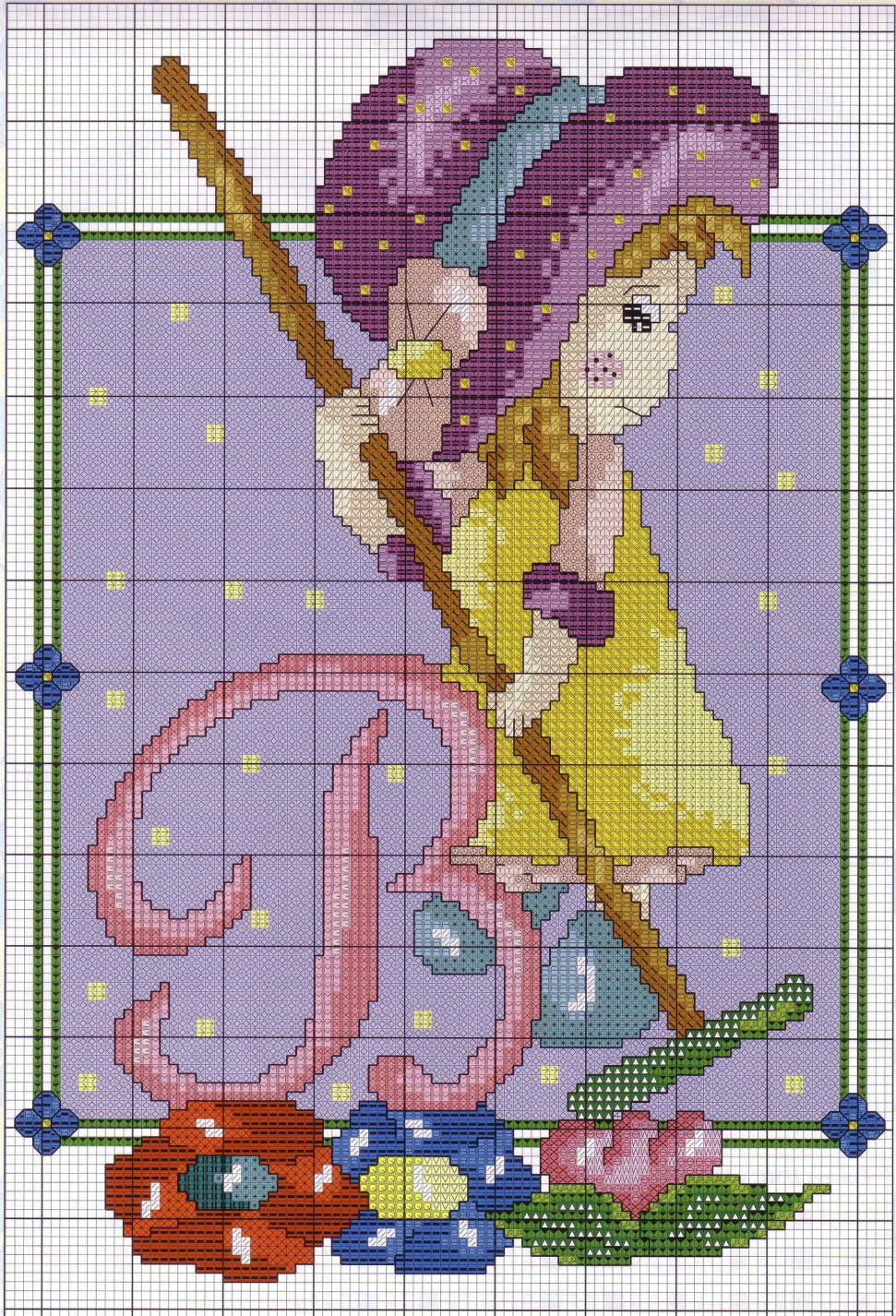
(Esquemas de la A a la D)



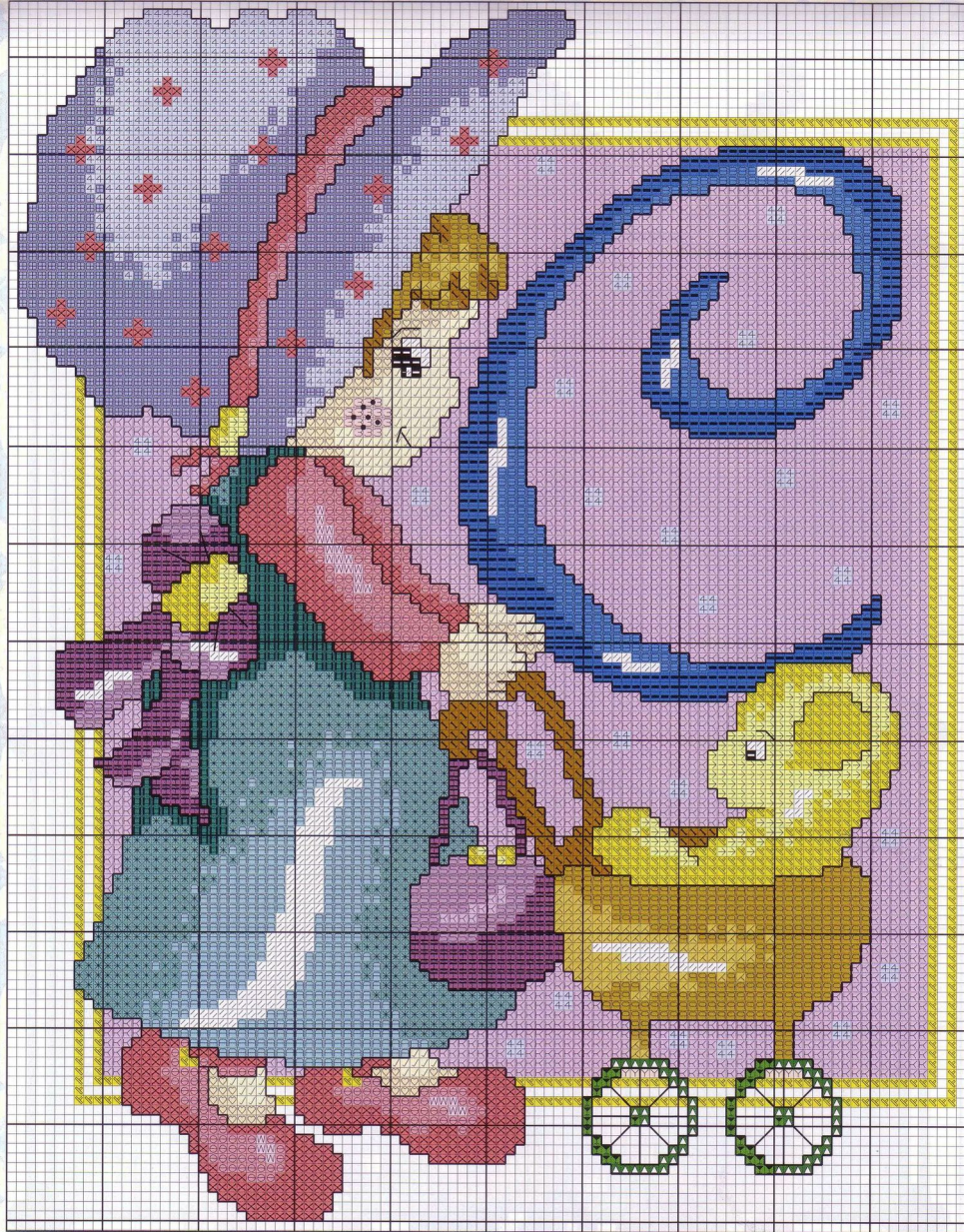
# Colores DMC y Madeira :

Blanco D 2401 M	210 D 802 M	341 D 901 M	436 D 2011 M	604 D 613 M	702 D 1306 M	726 D 109 M	761 D 405 M	958 D 1114 M	996 D 1103 M	3608 D 708 M	3770 D 2314 M	3843 D 1102 M	3713 D 404 M
208 D 804 M	310 D 2400 M	407 D 2312 M	437 D 2012 M	605 D 607 M	703 D 1307 M	743 D 113 M	800 D 908 M	959 D 1113 M	3078 D 102 M	3609 D 709 M	3774 D 2308 M	3801 D 213 M	3607 D 707 M
209 D 803 M	340 D 902 M	435 D 2010 M	603 D 612 M	666 D 212 M	704 D 1308 M	744 D 112 M	809 D 909 M	964 D 1112 M	<b>Pesunte:</b>		310 D 2400 M	436 D 2011 M	



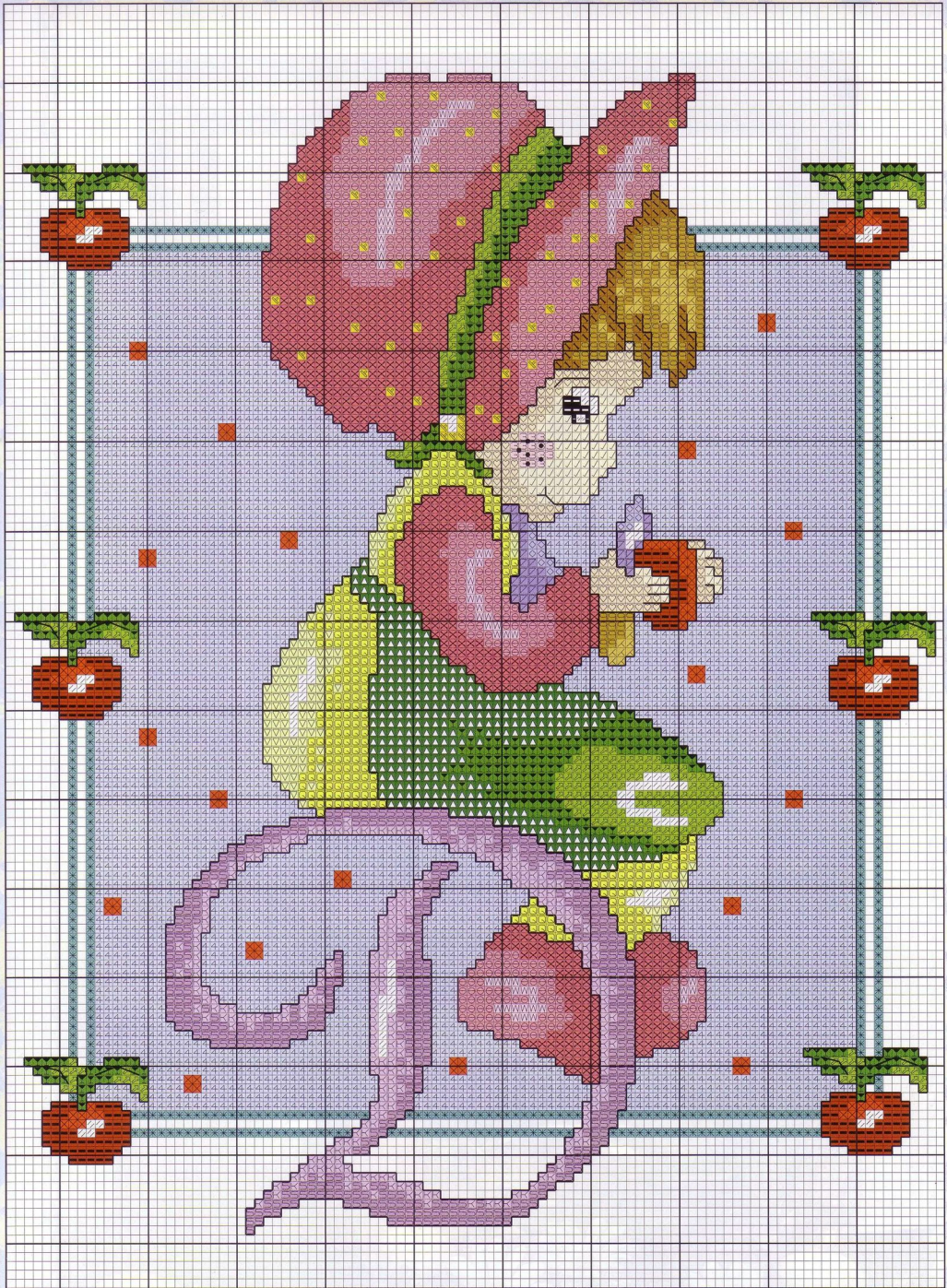






### Colores DMC y Madeira :

	Blanco D	2401 M		210 D	802 M		341 D	901 M		436 D	2011 M		694 D	613 M		702 D	1306 M		726 D	109 M		761 D	405 M		958 D	1114 M		996 D	1103 M		3608 D	708 M		3770 D	2314 M		3843 D	1102 M		3713 D	404 M
	208 D	804 M		310 D	2400 M		407 D	2312 M		437 D	2012 M		605 D	607 M		703 D	1307 M		743 D	113 M		800 D	800 M		959 D	1113 M		3078 D	102 M		3609 D	709 M		3774 D	2308 M		3801 D	213 M		3607 D	707 M
	209 D	803 M		340 D	902 M		435 D	2010 M		603 D	612 M		666 D	212 M		704 D	1308 M		744 D	112 M		809 D	909 M		964 D	1112 M	<i>Pesunte:</i>			310 D	2400 M		456 D	2011 M							





# La dama de la corte llega tarde

## **Materiales:**

*Para esta labor se ha empleado 34 cm. de ancho x 53 cm. de largo aprox. de tela Aida beige. Borda los colores oscuros con tres hebras y los más claros con dos, siguiendo el gráfico.*



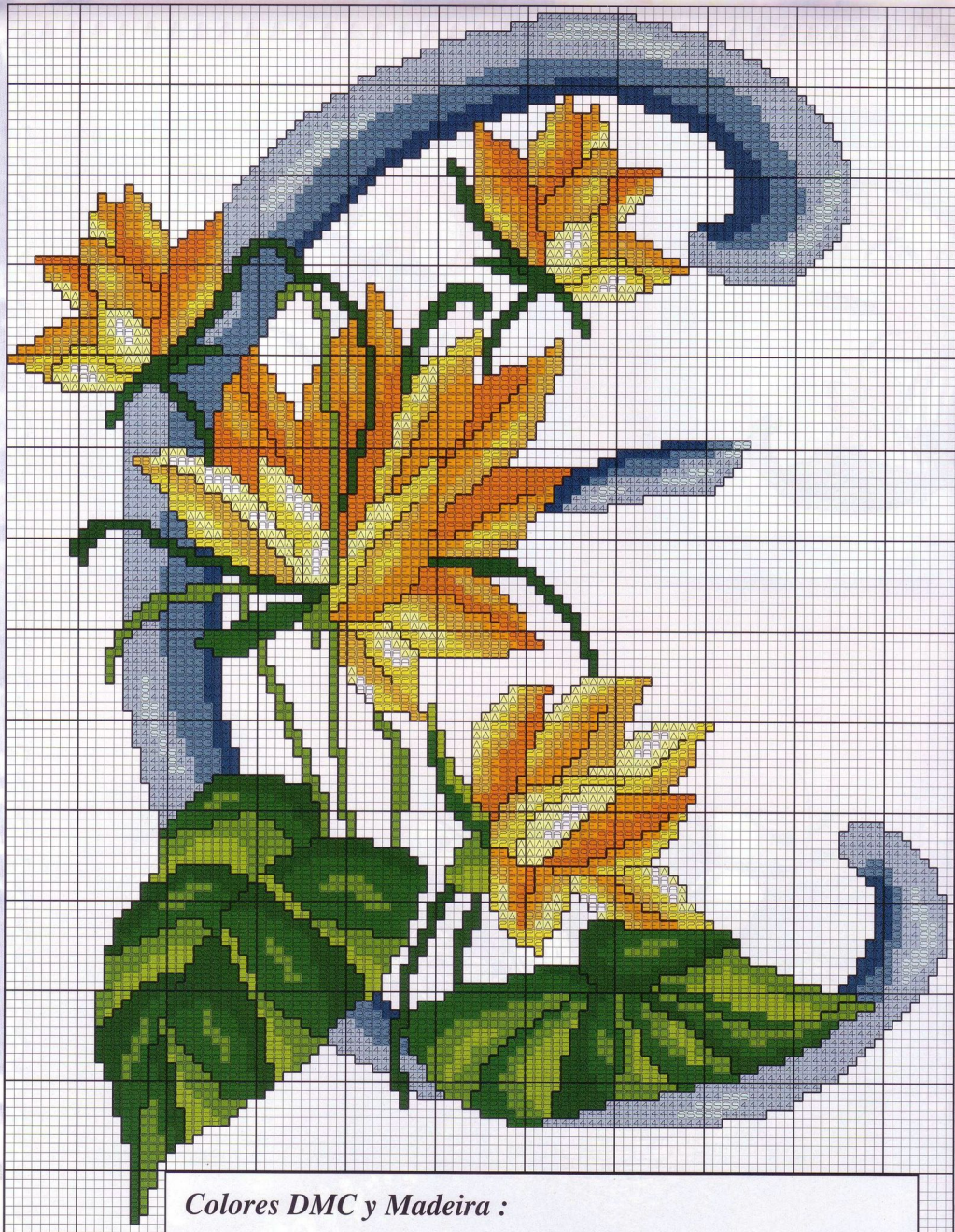
# Mucho más que unas iniciales

## **Materiales:**

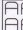
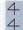

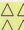




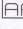
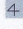

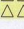














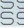


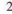
Realiza  
estos cuadros de  
iniciales a partir de  
22 x 22 cm. de tela Aida nº 14 blanca  
Utiliza tres hebras para el punto de cruz  
cuando vaya bordado en colores  
oscuros y dos cuando sean  
claros.

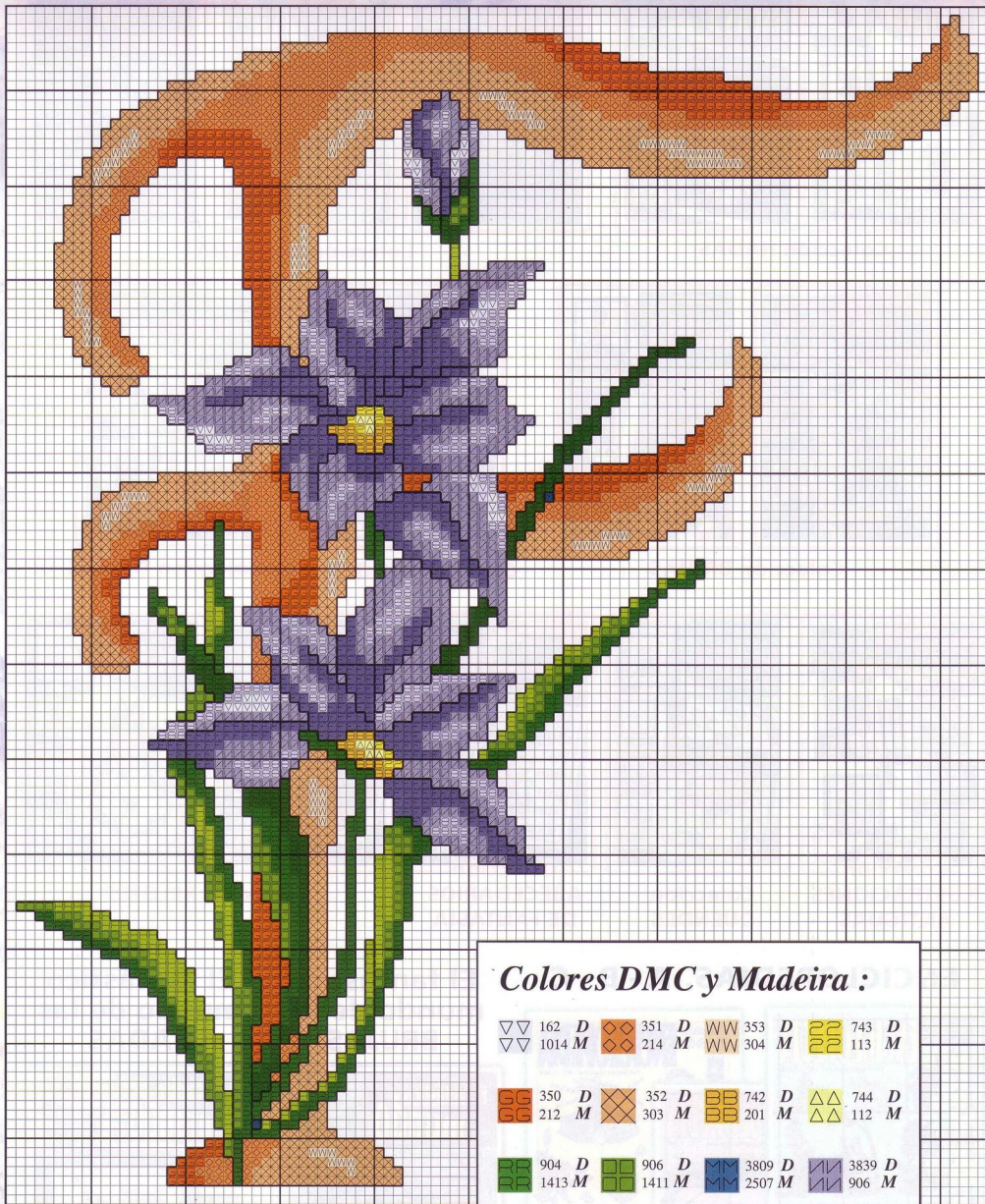






### Colores DMC y Madeira :

	Blanco <i>D</i>		4.4	598 <i>D</i>		742 <i>D</i>		744 <i>D</i>		904 <i>D</i>		906 <i>D</i>		947 <i>D</i>		3809 <i>D</i>
	2401 <i>M</i>		4.4	1111 <i>M</i>		201 <i>M</i>		112 <i>M</i>		1413 <i>M</i>		1411 <i>M</i>		205 <i>M</i>		2507 <i>M</i>
	597 <i>D</i>		740 <i>D</i>		743 <i>D</i>		747 <i>D</i>		905 <i>D</i>		907 <i>D</i>	<i>Pespunte:</i>			310 <i>D</i>	
	1110 <i>M</i>		204 <i>M</i>		113 <i>M</i>		1101 <i>M</i>		1412 <i>M</i>		1410 <i>M</i>				2400 <i>M</i>	



### Colores DMC y Madeira :

▽▽ 162 D	◇◇ 351 D	WW 353 D	22 743 D
▽▽ 1014 M	◇◇ 214 M	WW 304 M	22 113 M
GG 350 D	XX 352 D	BB 742 D	△△ 744 D
GG 212 M	XX 303 M	BB 201 M	△△ 112 M
FF 904 D	GG 906 D	MM 3809 D	PP 3839 D
FF 1413 M	GG 1411 M	MM 2507 M	PP 906 M
FF 905 D	HH 907 D	FF 3838 D	BB 3840 D
FF 1412 M	HH 1410 M	FF 905 M	BB 907 M
Pespunte: — 310 D			
		2400 M	



# Colores DMC y Madeira:

1 1  
Blanco D 210  
1 1 M 2401

209 D 803  
211 M 801

801 D 2007  
900 M 209

828 D 1014  
905 M 1413

407 D 2312  
522 M 713

519 D 1105  
533 M 712

991 D 1204  
3716 M 504

993 D 3746  
1201 M 903

310 D 2400  
340 M 902

320 D 1310  
341 M 901

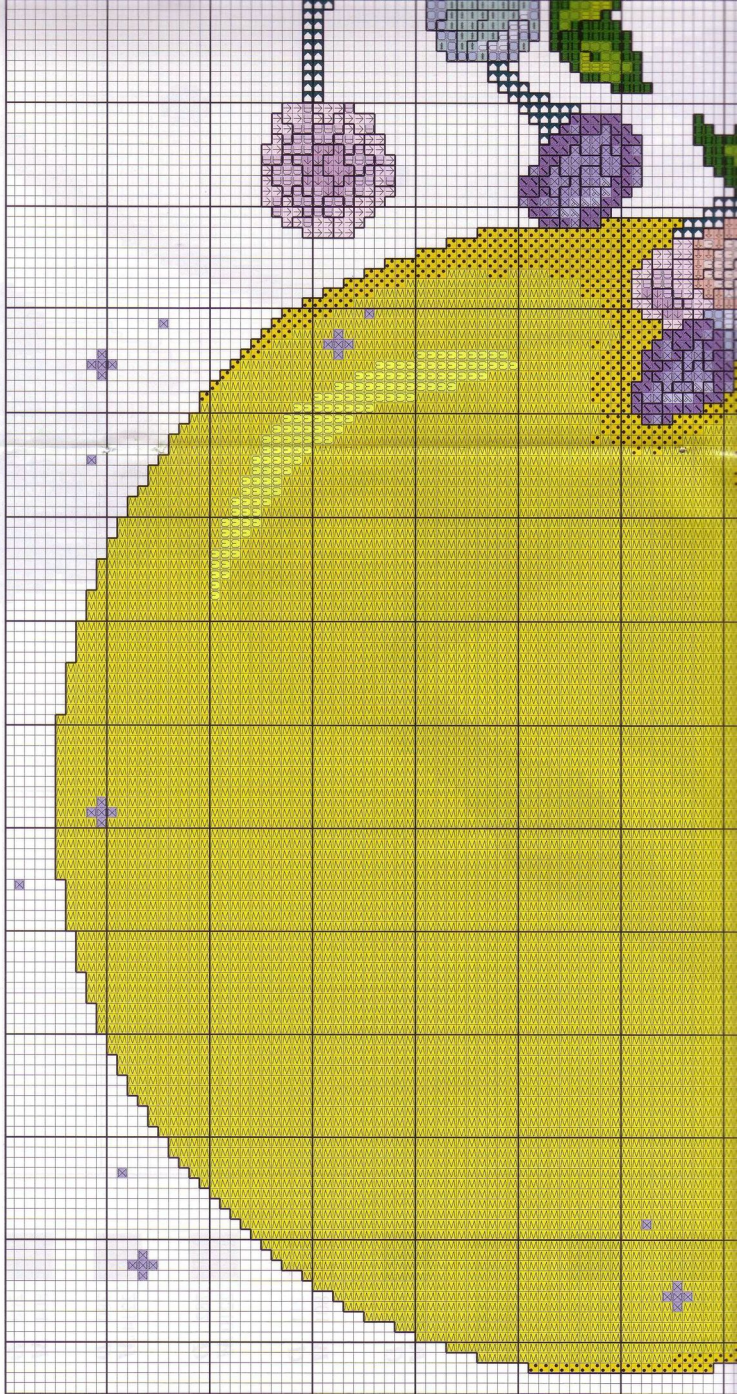
906 D 1411  
947 M 205

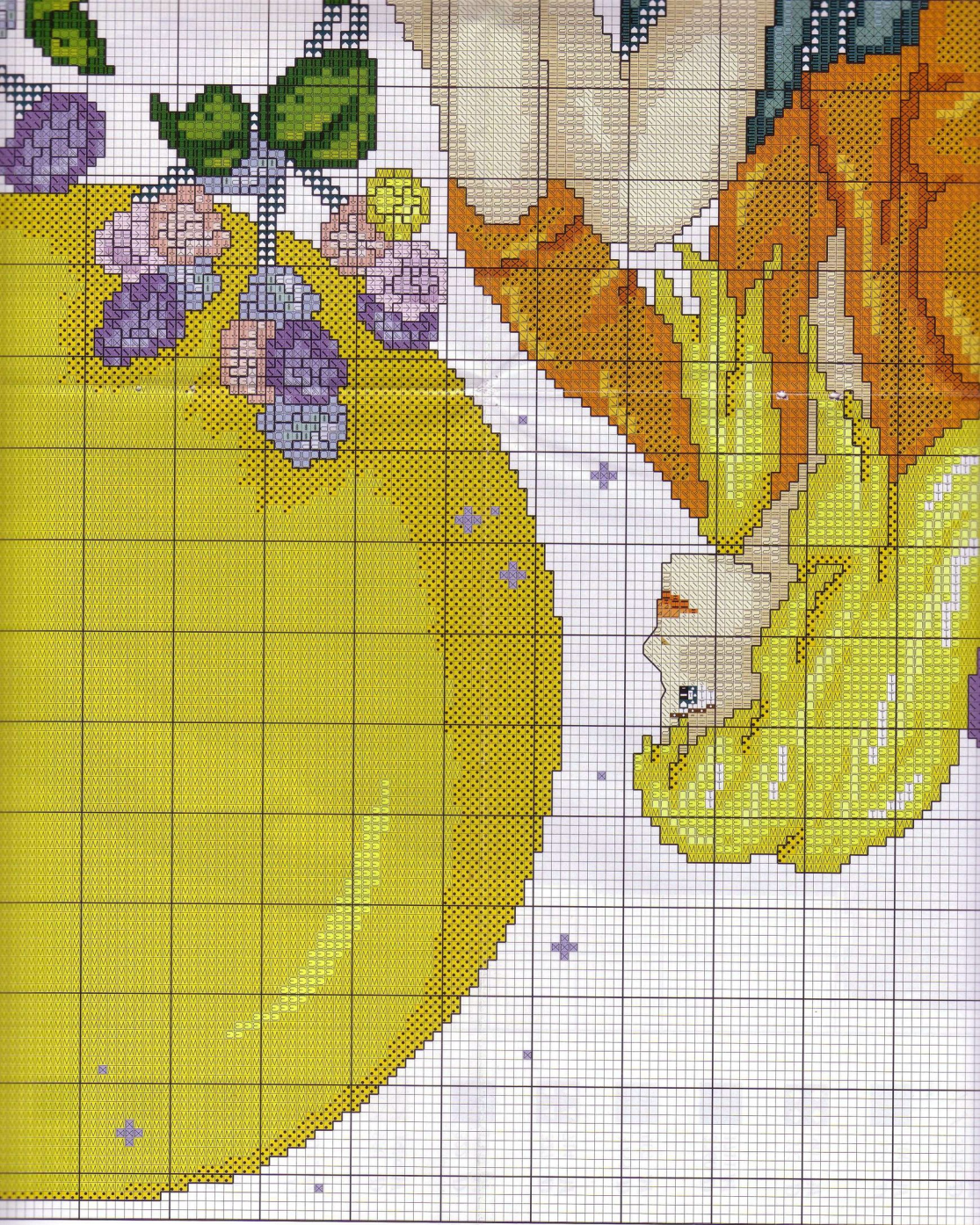
907 D 1410  
950 M 1909

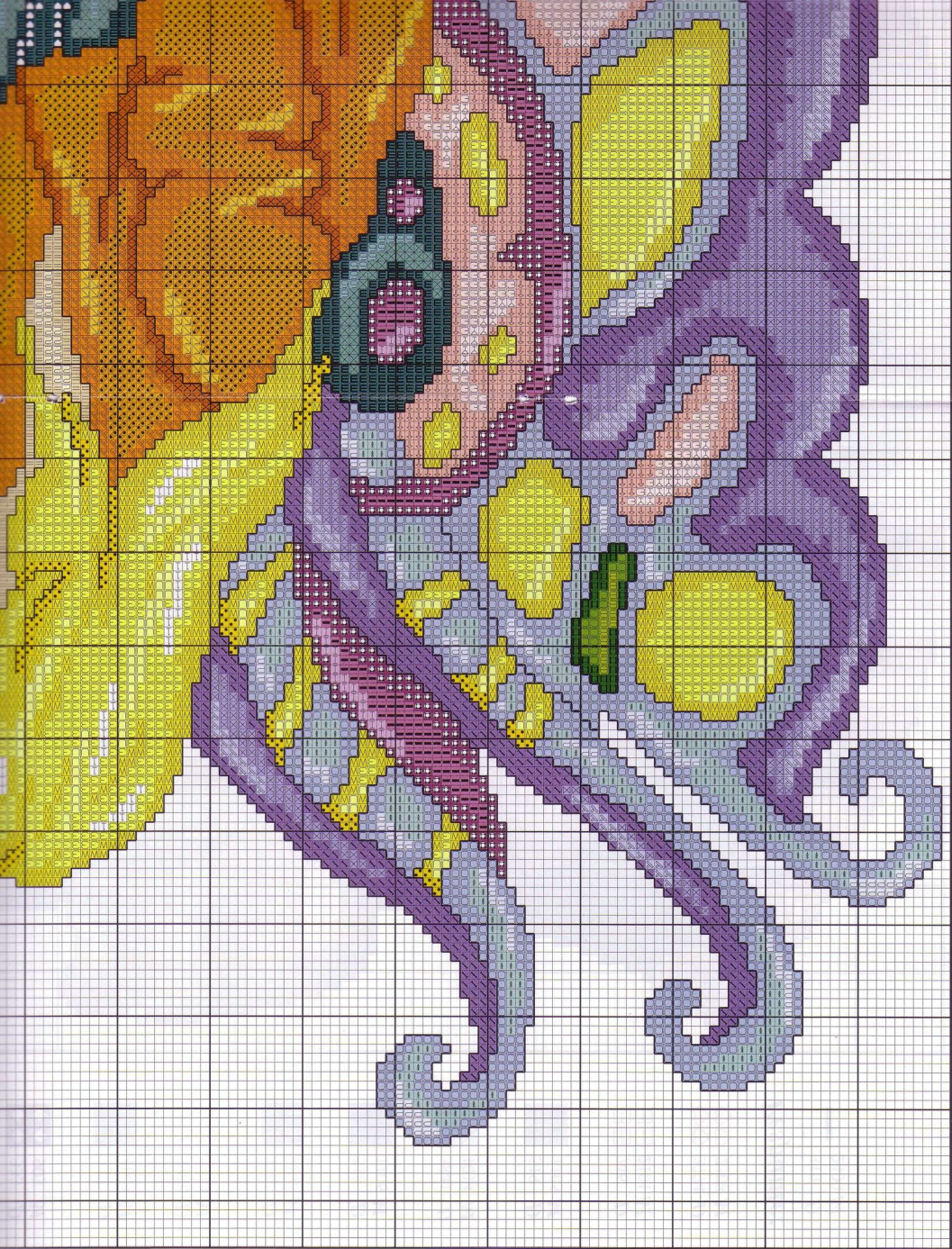
554 D 726  
711 M 112

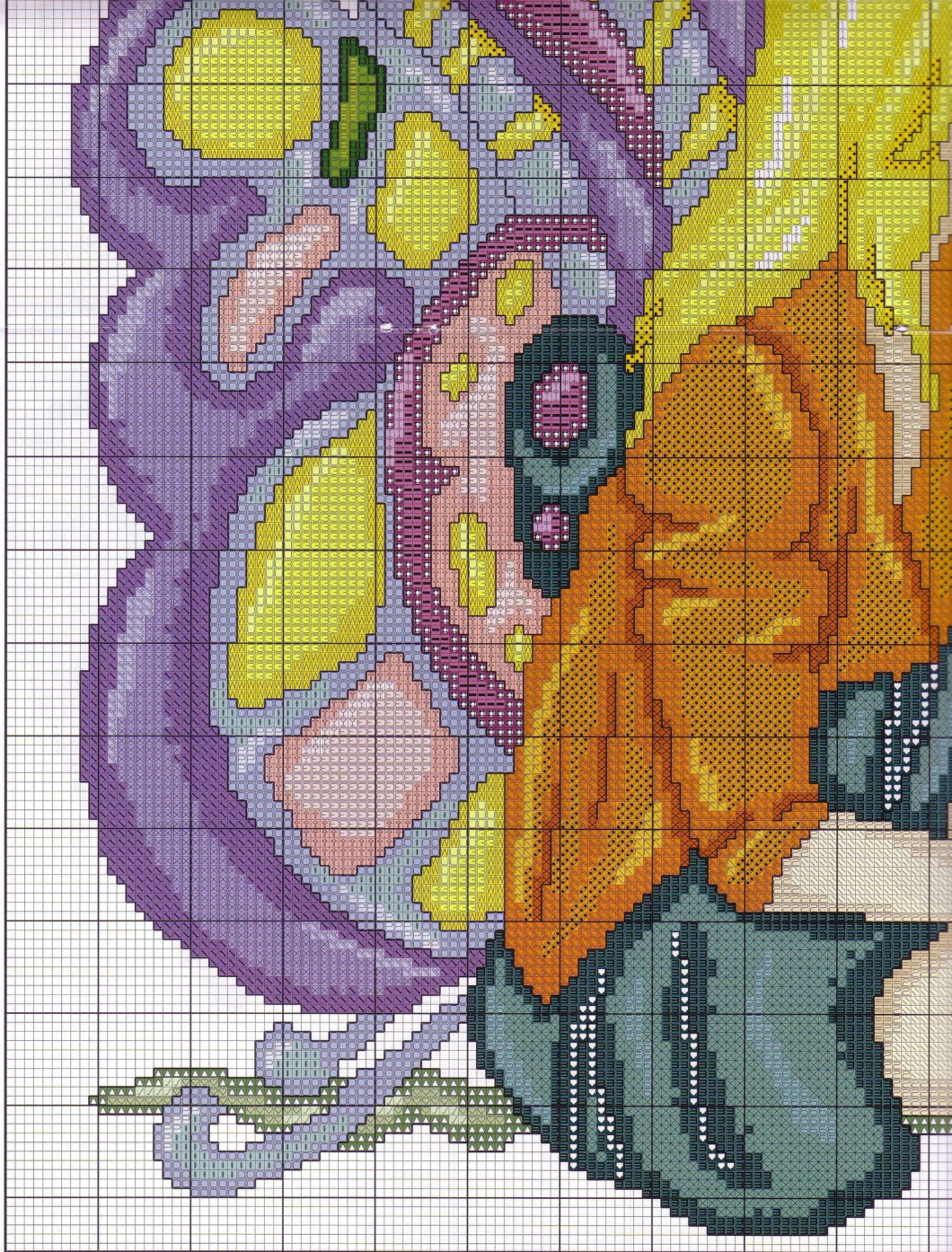
725 D 113  
727 M 111

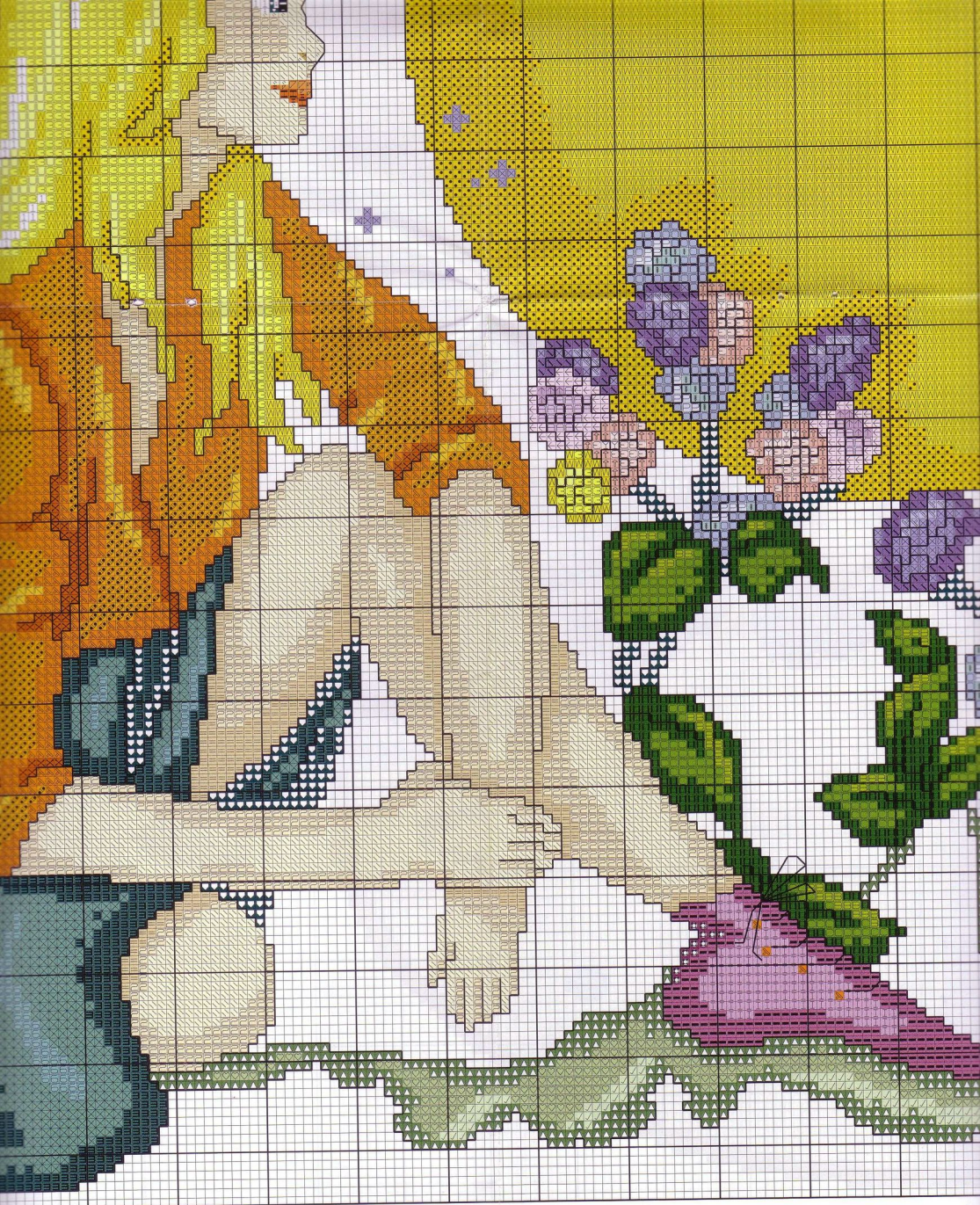
3770 D 2314  
3811 M 1111

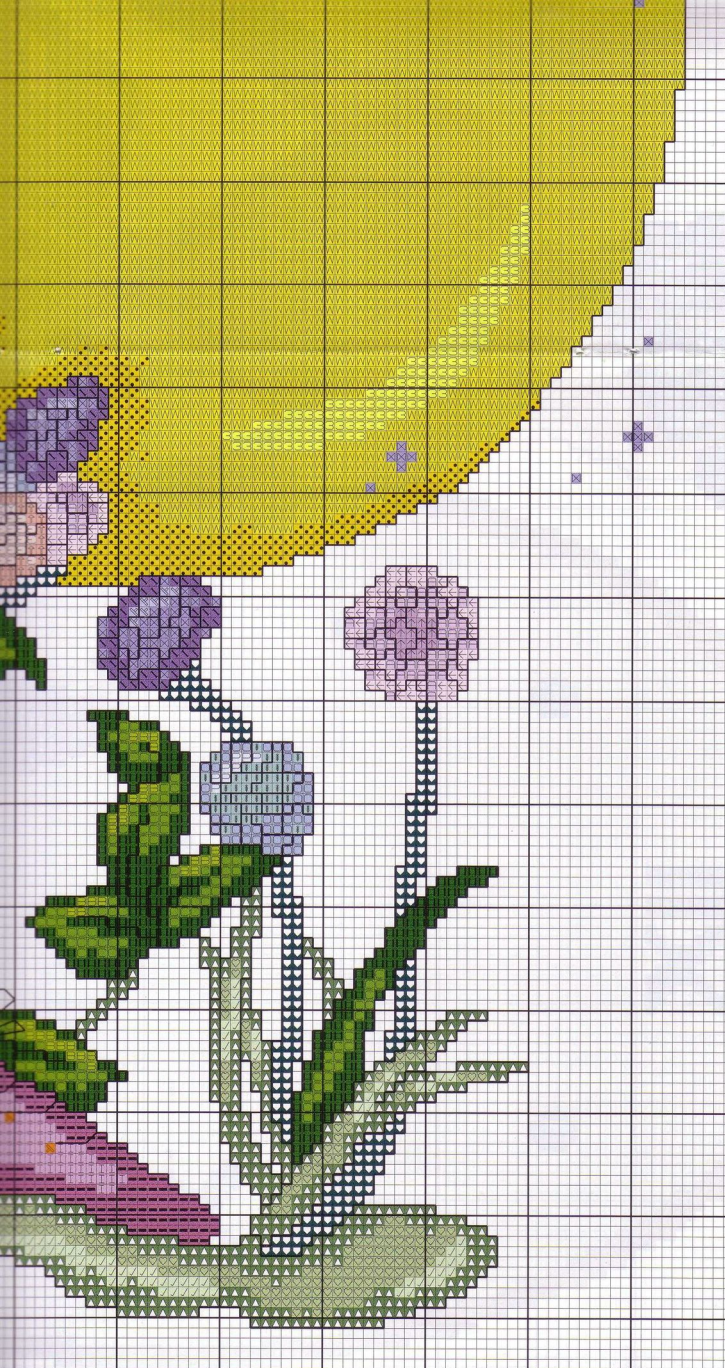




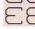







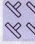
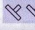






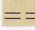
 991 *D*    3716 *D*  
 1204 *M*    504 *M*

 993 *D*    3746 *D*  
 1201 *M*    903 *M*




 310 *D*    340 *D*  
 2400 *M*    902 *M*

 320 *D*    341 *D*  
 1310 *M*    901 *M*

 906 *D*    947 *D*  
 1411 *M*    205 *M*


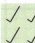
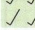
 907 *D*    950 *D*  
 1410 *M*    1909 *M*

 554 *D*    726 *D*  
 711 *M*    112 *M*

 725 *D*    727 *D*  
 113 *M*    111 *M*

 3770 *D*    3811 *D*  
 2314 *M*    1111 *M*

 350 *D*    368 *D*  
 212 *M*    1401 *M*


 351 *D*    369 *D*  
 214 *M*    1309 *M*

 959 *D*    963 *D*  
 1113 *M*    503 *M*

 962 *D*    972 *D*  
 505 *M*    107 *M*

 740 *D*    3814 *D*  
 204 *M*    1203 *M*

 742 *D*    3774 *D*  
 201 *M*    2308 *M*

*Pespunte:*  310 *D*  
 2400 *M*



- |        |  |        |  |
|--------|--|--------|--|
| 567 D  |  | 470 D  |  |
| 1313 M |  | 1502 M |  |
| 768 D  |  | 471 D  |  |
| 1603 M |  | 1501 M |  |
|        |  | 602 M  |  |
|        |  | 701 M  |  |
|        |  | 603 D  |  |
|        |  | 612 M  |  |
|        |  | 604 M  |  |
|        |  | 613 M  |  |
|        |  | 605 D  |  |
|        |  | 607 M  |  |
|        |  | 728 D  |  |
|        |  | 2301 M |  |
|        |  | 743 D  |  |
|        |  | 113 M  |  |
|        |  | 745 D  |  |
|        |  | 111 M  |  |
|        |  | 3346 D |  |
|        |  | 1407 M |  |
|        |  | 3348 D |  |
|        |  | 1408 M |  |
|        |  | 3755 D |  |
|        |  | 1002 M |  |
|        |  | 3852 D |  |
|        |  | 2514 M |  |
|        |  | 3822 D |  |
|        |  | 2512 M |  |
|        |  | 310 D  |  |
|        |  | 2400 M |  |

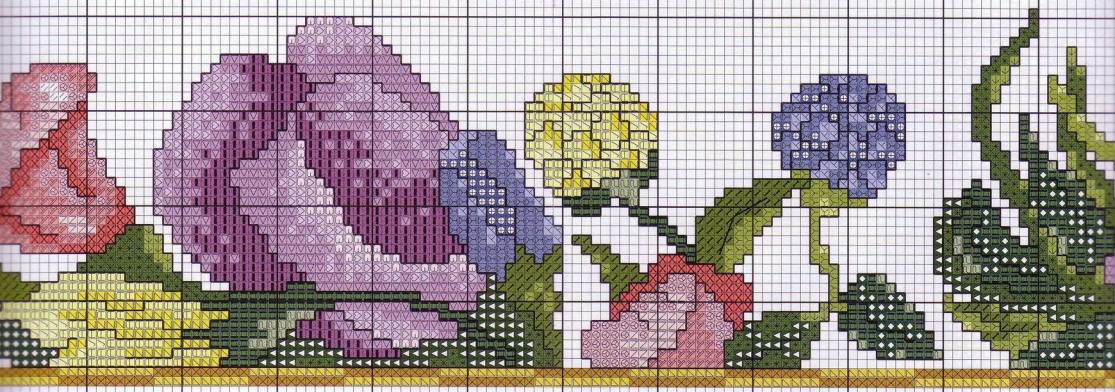
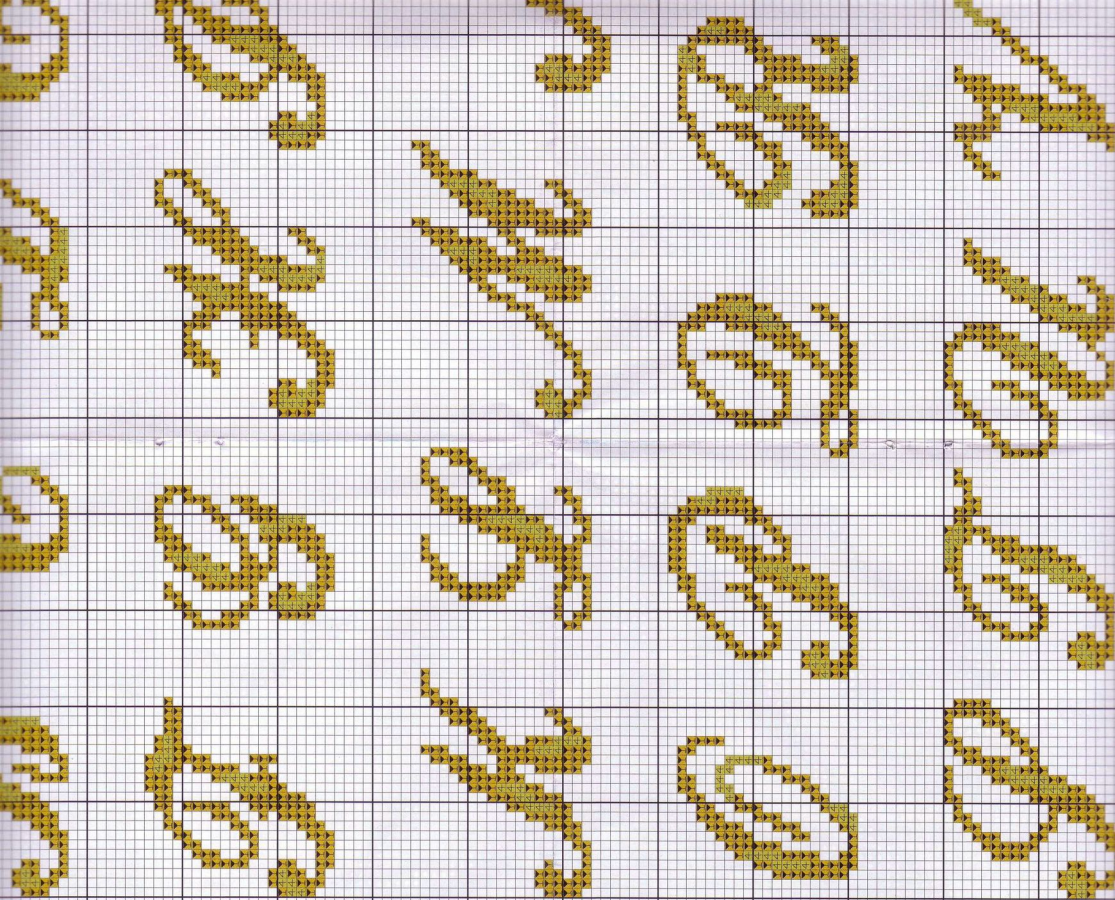
**Respunite:**













# Colores DMC:



169 *D*



310 *D*



543 *D*



647 *D*



415 *D*



453 *D*



928 *D*



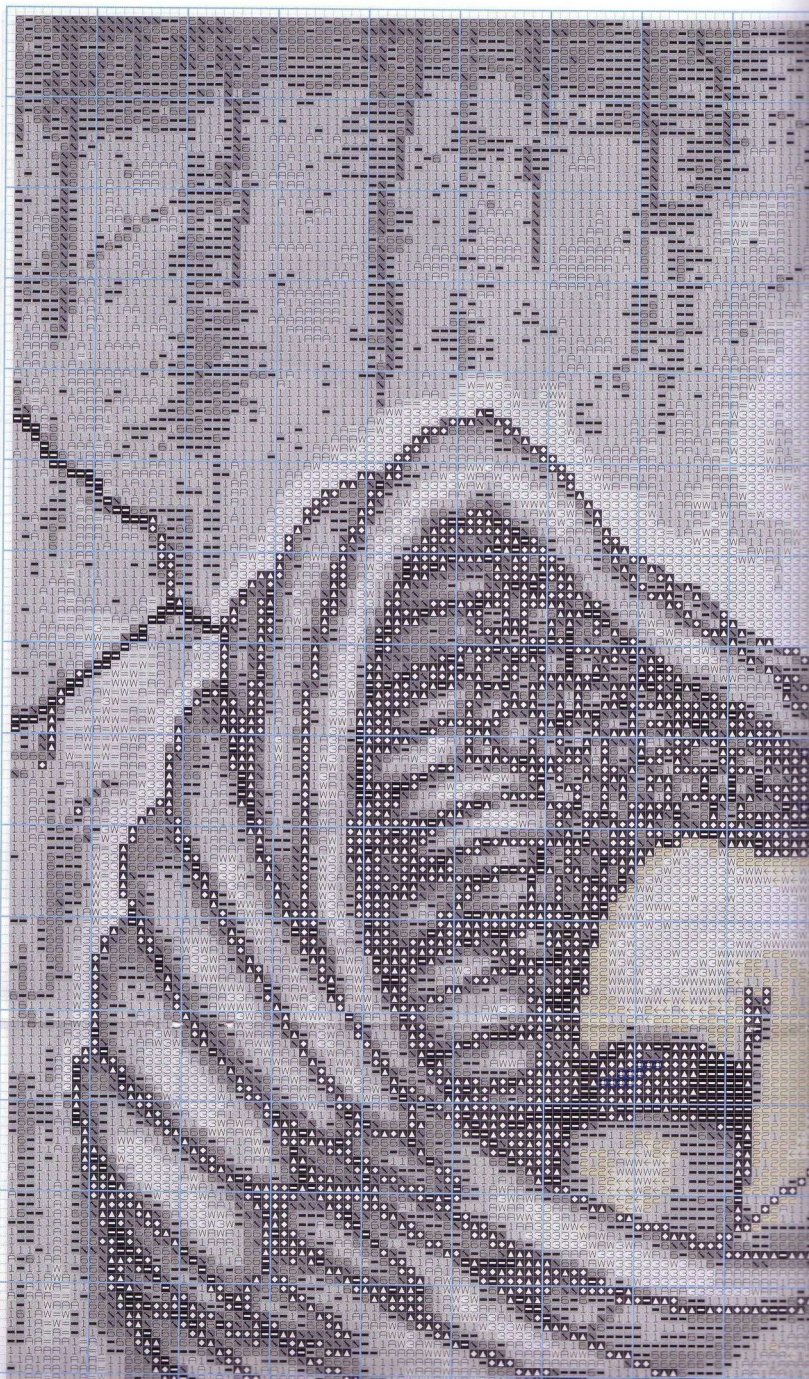
3024 *D*

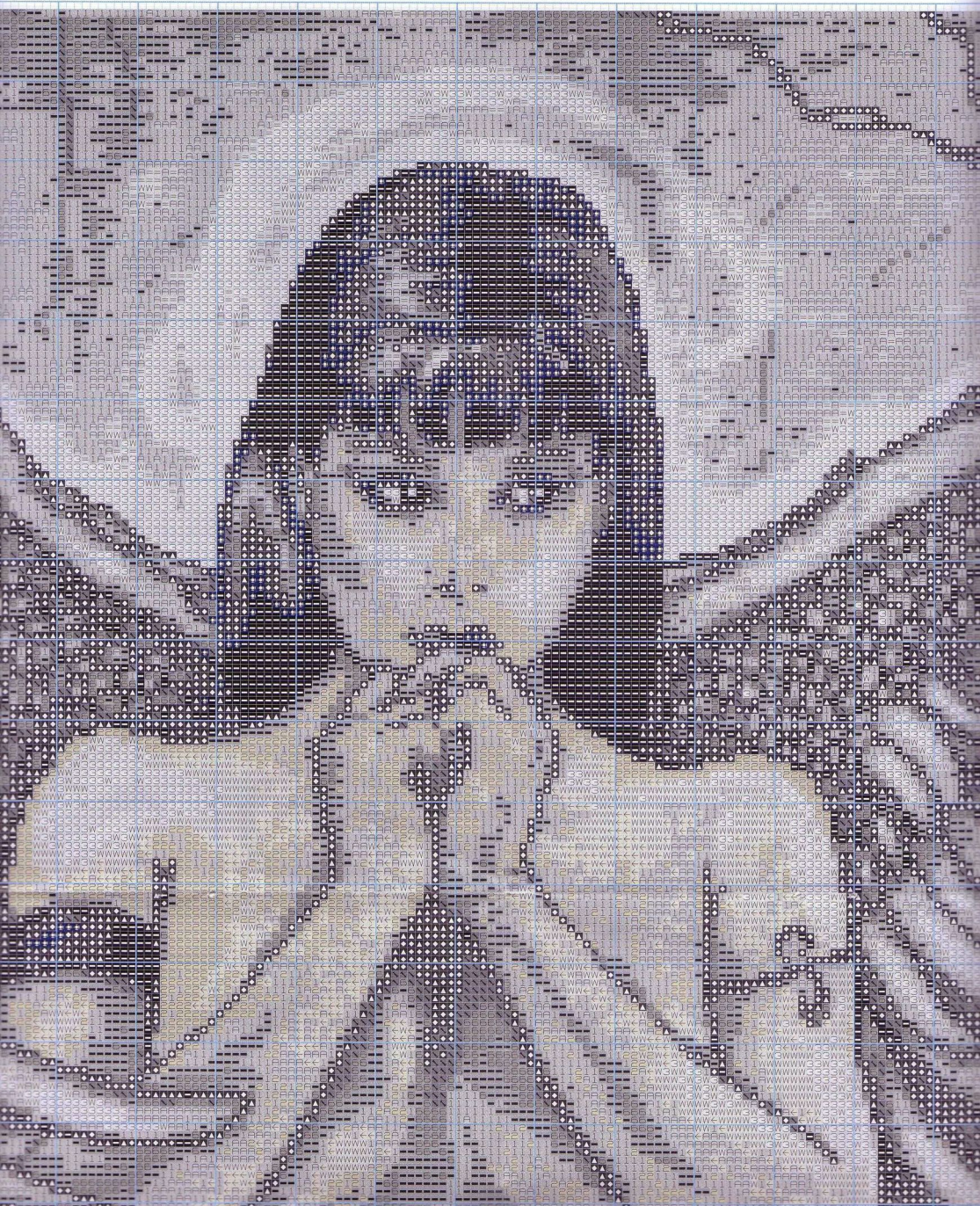


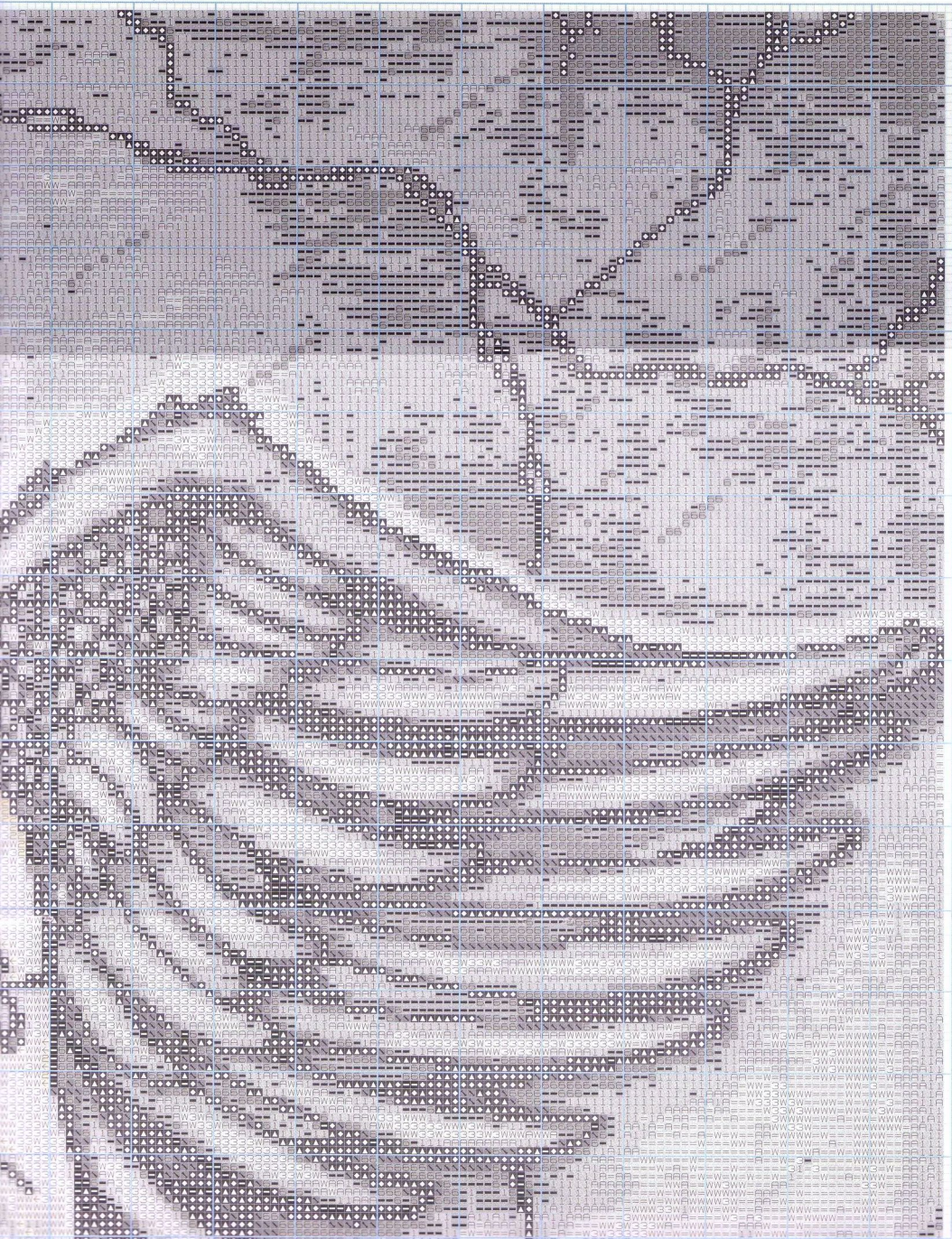
413 *D*



414 *D*







543 *D*

647 *D*

415 *D*

453 *D*

928 *D*

3024 *D*

413 *D*

414 *D*

648 *D*

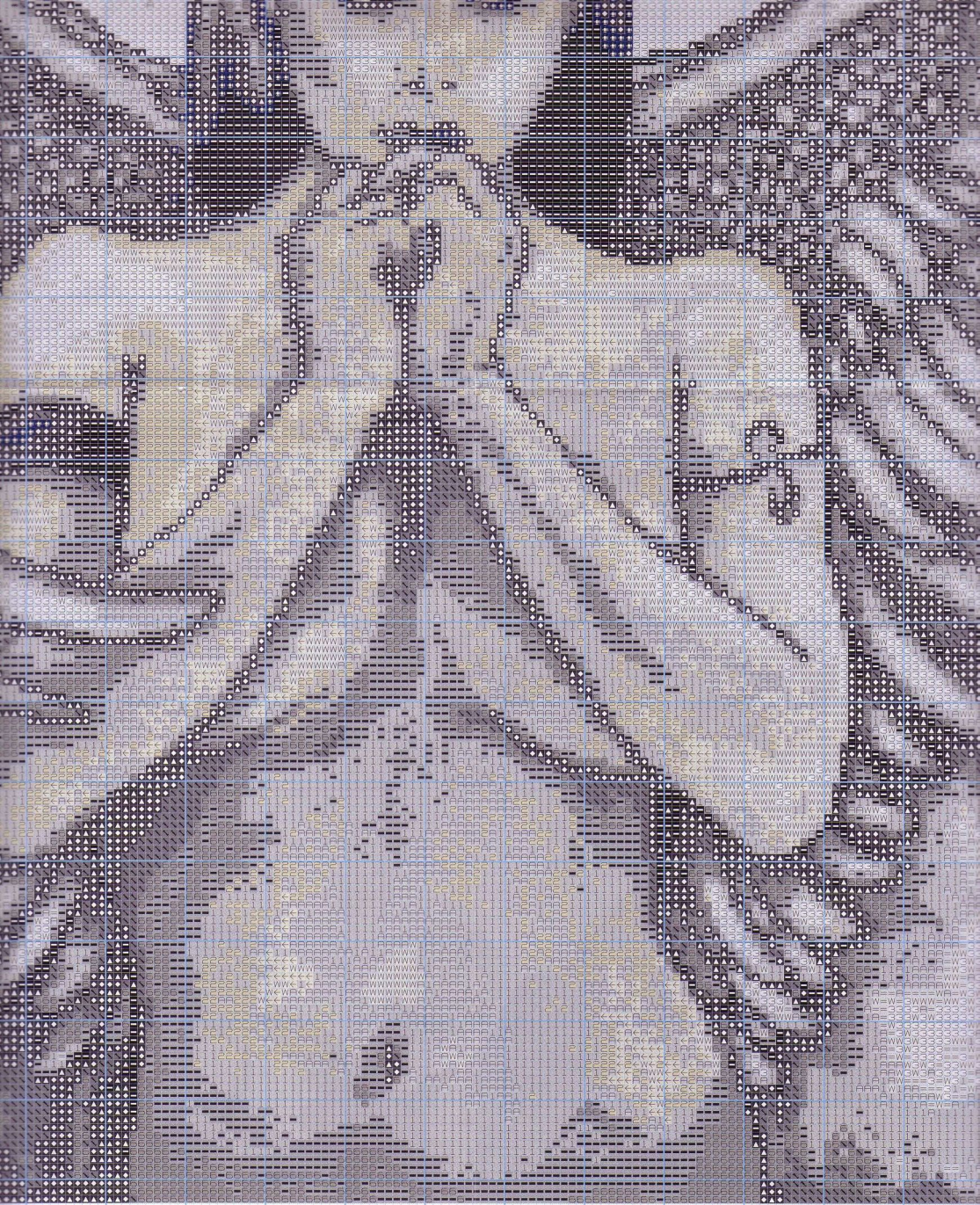
803 *D*

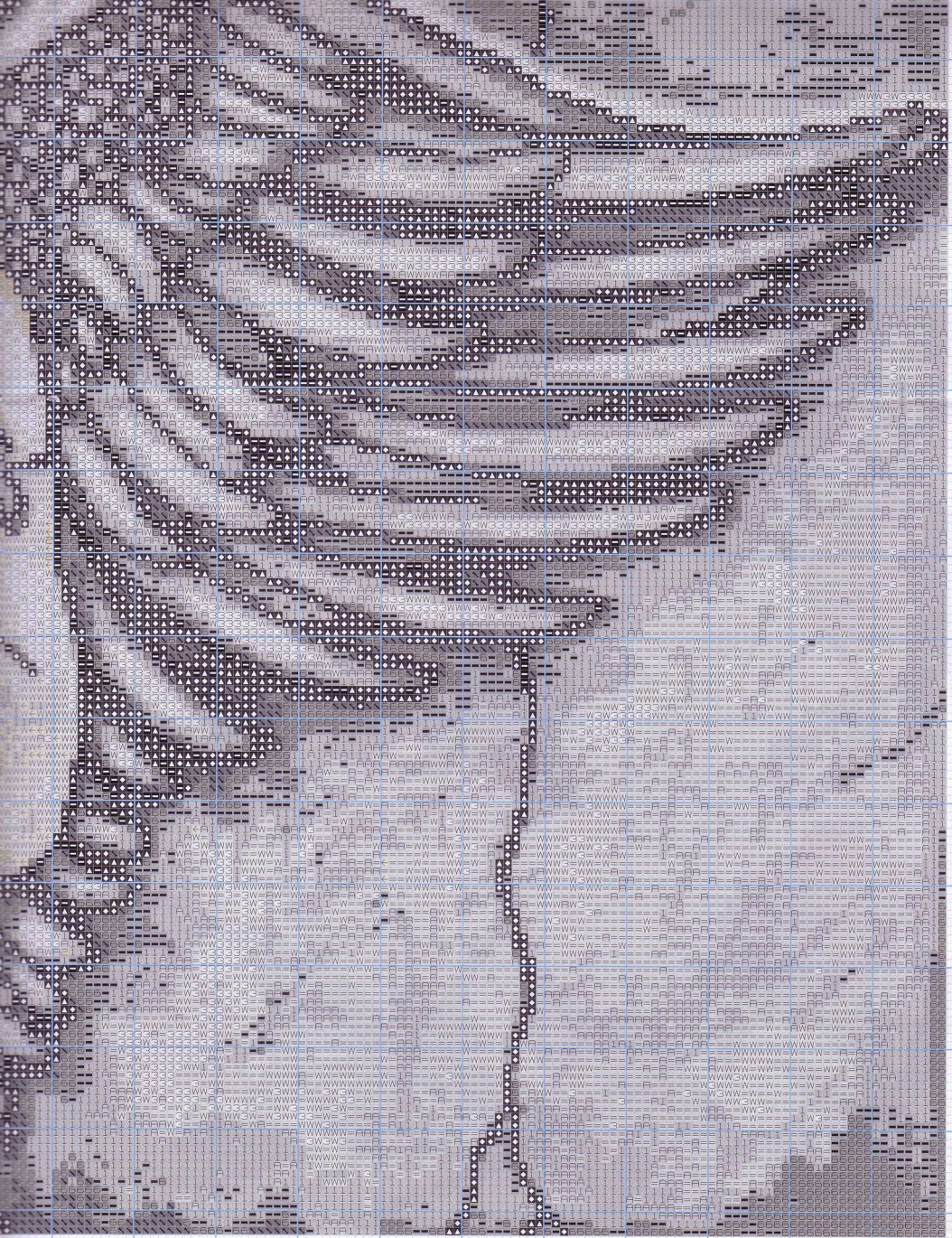
3072 *D*

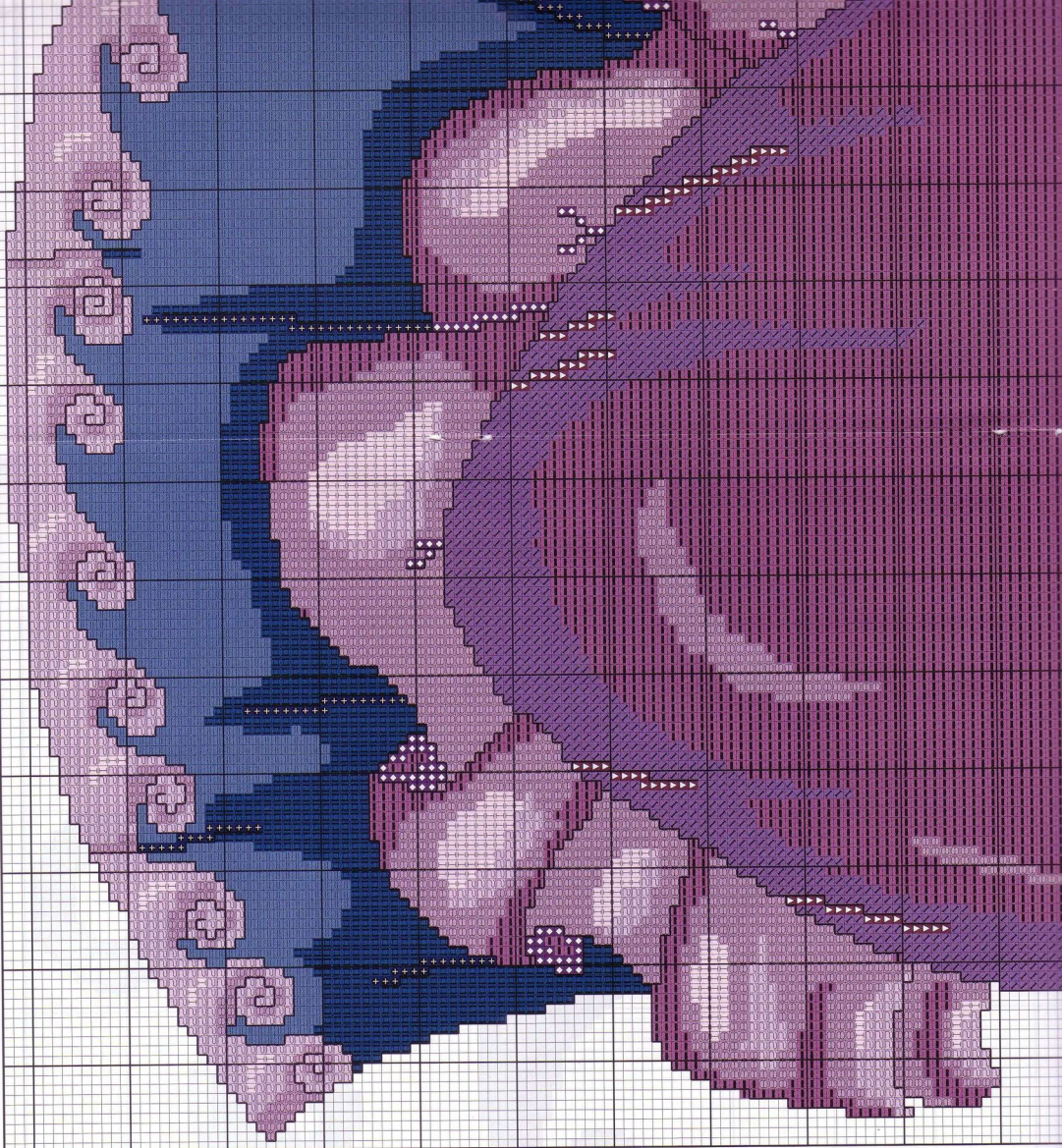
3799 *D*











333 D  
903 M

334 D  
1003 M

3770 D  
2314 M

514 D  
1107 M

518 D  
1106 M

3841 D  
1014 M

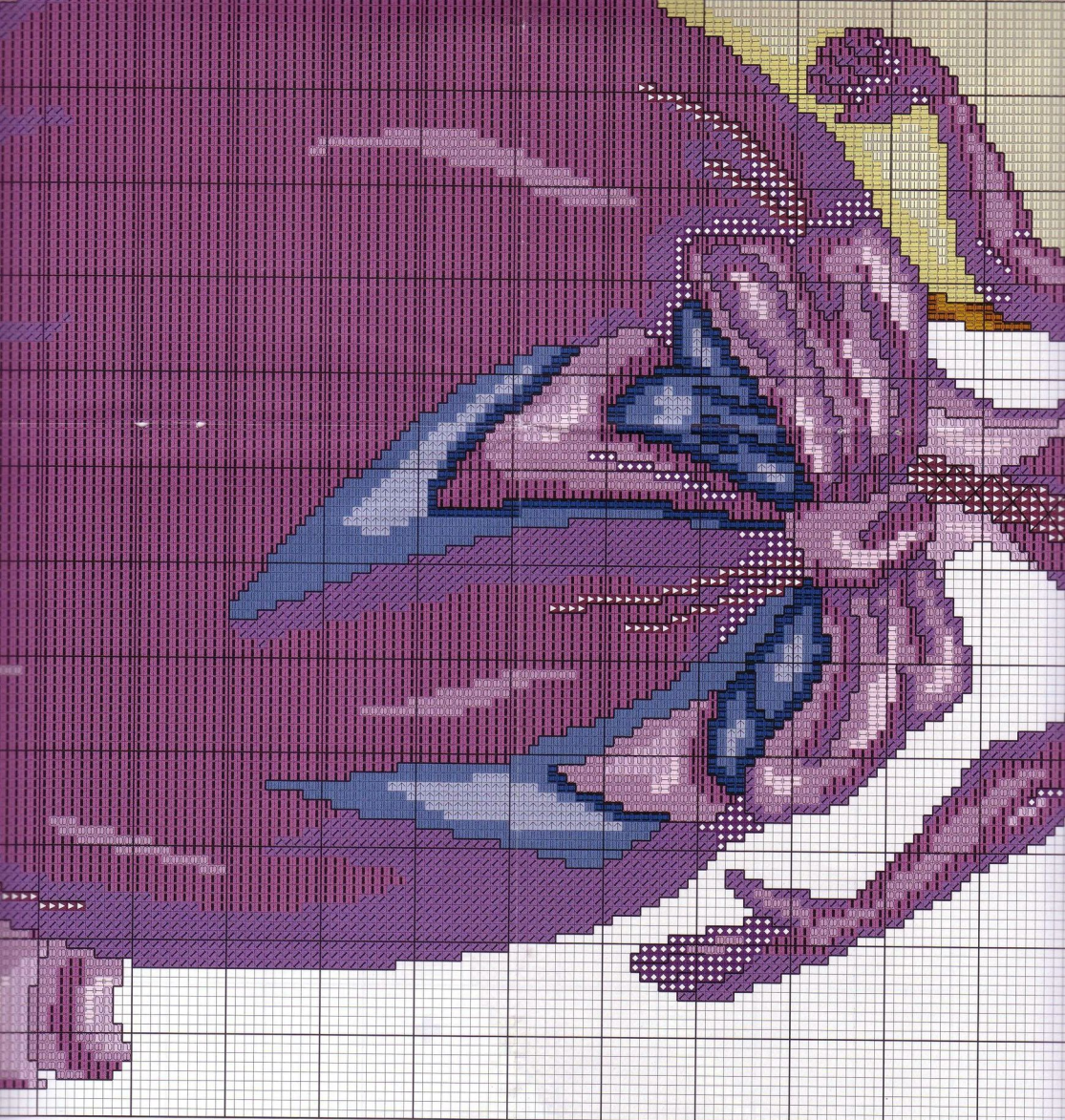
519 D  
1105 M

746 D  
2101 M

3774 D  
2308 M

310 D  
2400 M

**Respunte:**



2205 M

3746 D  
902 M

209 D  
803 M

210 D  
802 M

783 D  
2212 M

950 D  
1909 M

322 D  
1004 M

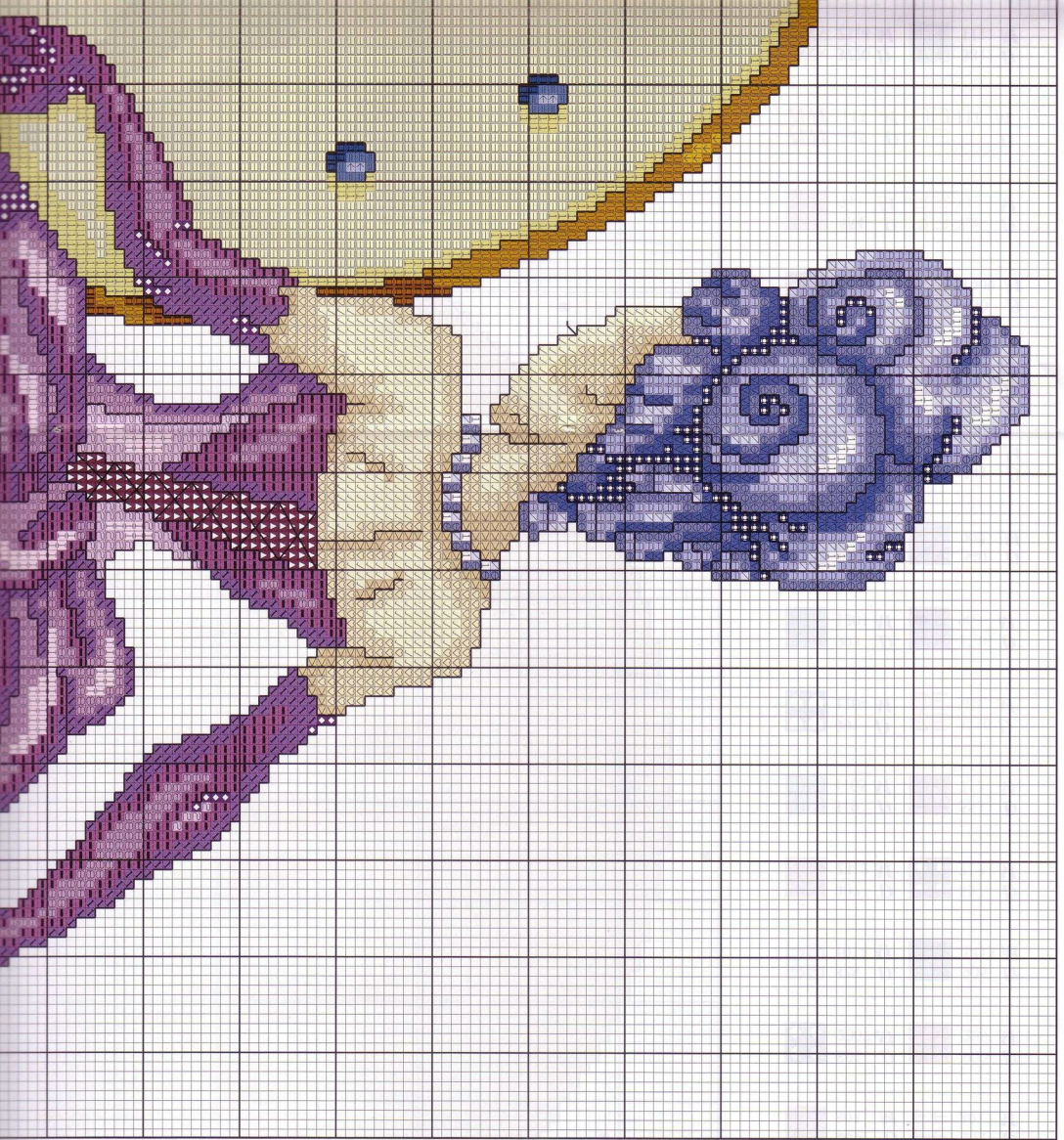
327 D  
714 M

3755 D  
907 M

3760 D  
1711 M

333 D  
903 M

334 D  
1003 M



**Colores**  
**DMC y**  
**Madeira:**

11 Blanco D  
 11 2401 M

208 D  
 804 M

780 D  
 2214 M

782 D  
 2210 M

211 D  
 801 M

312 D  
 1006 M

3047 D  
 2205 M

3746 D  
 902 M

209 D  
 803 M

